

List of pages in this Trip Kit

Trip Kit Index

Airport Information For RJAH

Terminal Charts For RJAH

Revision Letter For Cycle 16-2023

Change Notices

Notebook

General Information

Location: HYAKURI JPN
ICAO/IATA: RJAH / IBR
Lat/Long: N36° 10.90', E140° 24.88'
Elevation: 107 ft

Airport Use: Joint-Use
Daylight Savings: Not Observed
UTC Conversion: -9:00 = UTC
Magnetic Variation: 7.0° W

Fuel Types: Jet A-1, Jet 4
Customs: No
Airport Type: IFR
Landing Fee: No
Control Tower: Yes
Jet Start Unit: No
LLWS Alert: Yes
Beacon: Yes

Sunrise: 2113 Z
Sunset: 0732 Z

Runway Information

Runway: 03L
Length x Width: 8858 ft x 148 ft
Surface Type: asphalt
TDZ-Elev: 107 ft
Lighting: Edge, ALS, Centerline

Runway: 03R
Length x Width: 8858 ft x 148 ft
Surface Type: concrete
TDZ-Elev: 107 ft
Lighting: Edge, ALS
Stopway: 980 ft

Runway: 21L
Length x Width: 8858 ft x 148 ft
Surface Type: concrete
TDZ-Elev: 108 ft
Lighting: Edge, ALS
Stopway: 980 ft

Runway: 21R
Length x Width: 8858 ft x 148 ft
Surface Type: asphalt
TDZ-Elev: 107 ft

Lighting: Edge, Centerline, REIL

Communication Information

Hyakuri Tower: 138.050

Hyakuri Tower: 126.200

Hyakuri Tower: 123.100

Hyakuri Tower: 23.680 Military

Hyakuri Tower: 24.700 Military

Hyakuri Tower: 32.380 Military

Hyakuri Tower: 118.025

Hyakuri Ground: 126.200

Hyakuri Ground: 119.500

Hyakuri Ground: 27.580 Military

Hyakuri Ground: 24.780 Military

Hyakuri Approach: 36.230 Military

Hyakuri Approach: 30.570 Military

Hyakuri Approach: 120.100

Hyakuri Approach: 26.120 Military

Hyakuri Approach: 123.875

Hyakuri Terminal Control Area: 124.800

Hyakuri Departure: 120.100

Hyakuri Departure: 36.230 Military

Hyakuri Radar: 125.300

Hyakuri Radar: 123.875

Hyakuri Radar: 127.975

Hyakuri Radar: 120.100

Hyakuri Radar: 36.230 Military

Hyakuri Radar: 33.560 Military

Hyakuri Radar: 32.120 Military

Hyakuri Radar: 31.080 Military

Hyakuri Radar: 30.620 Military

Hyakuri Radar: 30.570 Military

Hyakuri Radar: 30.040 Military

Hyakuri Radar: 28.990 Military

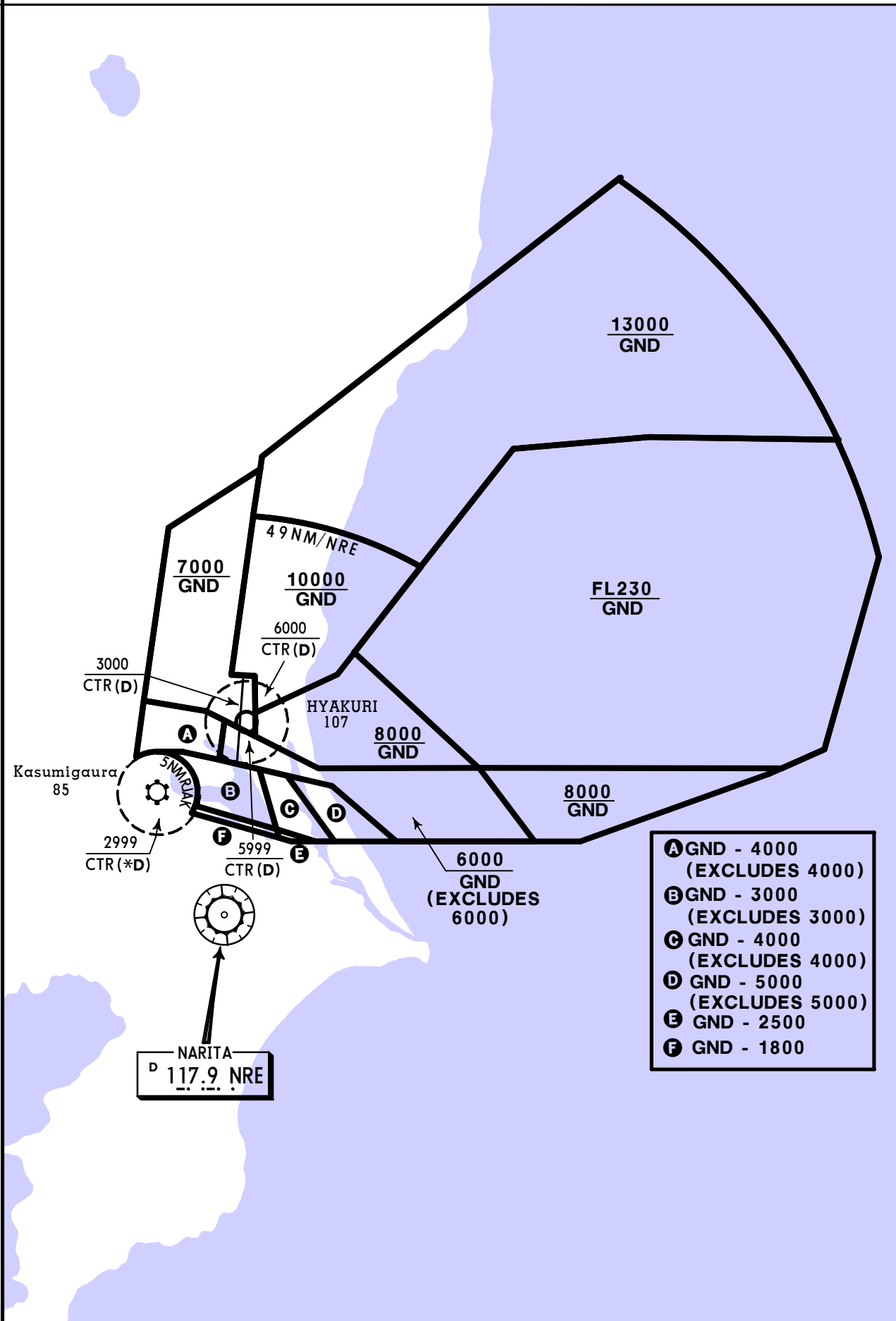
Hyakuri Radar: 27.080 Military

Hyakuri Radar: 26.120 Military

Hyakuri Radar: 134.100

HYAKURI APPROACH CONTROL AREA (E)

Transponder (Mode A/3 & Mode C) required in
Approach Control Area and Control Zones.



RJAH
HYAKURI

 **JEPPESEN**
10 JUL 20 (10-1P)

HYAKURI, JAPAN
AIRPORT BRIEFING

GENERAL

1. FLIGHT PROCEDURES

1.1 Lost communication procedures for arrival aircraft under radar navigational guidance

If radio communications with HYAKURI Radar are lost for 1 minute in the pattern or 5 seconds (PAR)/15 seconds (ASR) on final approach, squawk Mode A/3 Code 7600 and:

- (I) 1) Contact HYAKURI Radar/Tower.
 - 2) If unable, proceed in accordance with visual flight rules.
 - 3) If unable, proceed to TACAN IAF or NAKAH IAF at last assigned altitude or 4000' whichever higher, and execute instrument approach.
- (II) Procedures other than above will be issued when situation required.

1.2 Automated Radar Terminal System (ARTS)

When instructed by ATC, aircraft flying in and out of Hyakuri Approach control area in principle will reply on 4096 Code (Mode A/3) with automatic altitude reporting capability (Mode C); Aircraft not equipped with the said transponder shall report ATC to that effect.

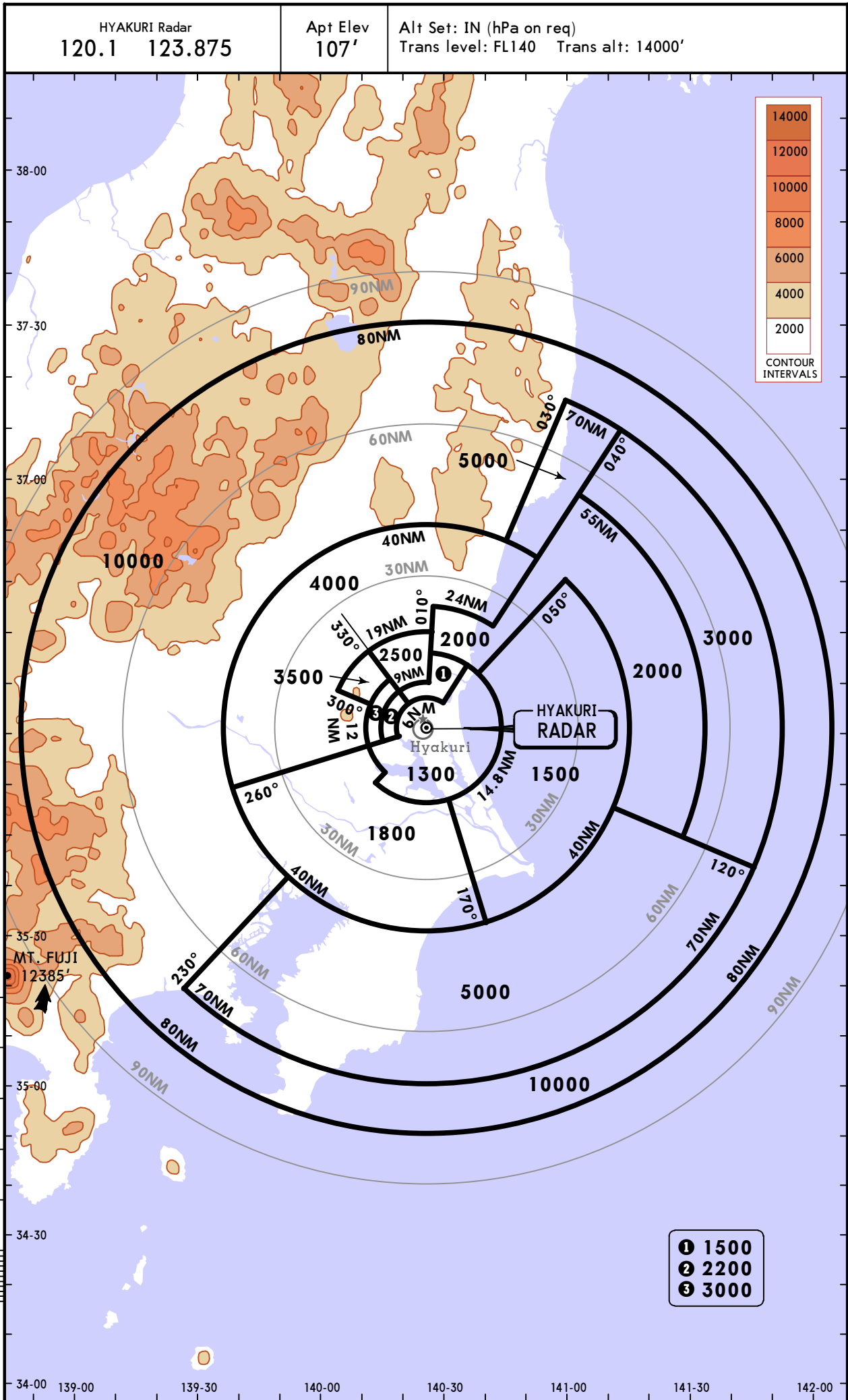
RJAH/IBR
HYAKURI

JEPPESSEN

HYAKURI, JAPAN

30 JUN 17 (10-1R)

RADAR MINIMUM ALTITUDES



RJAH/IBR
HYAKURI

JEPPESSEN

HYAKURI, JAPAN

18 MAR 22

10-2

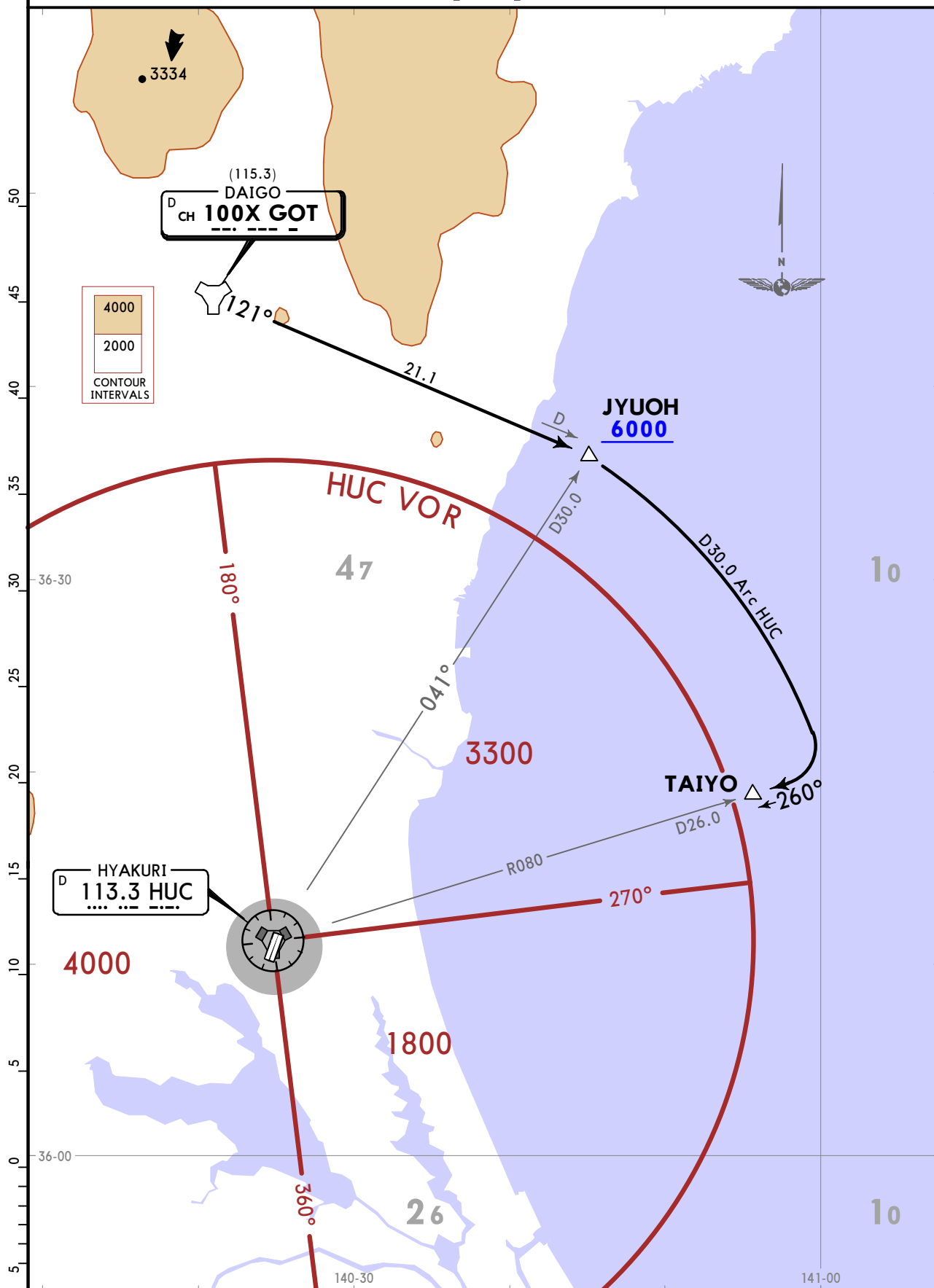
Eff 23 Mar 1500Z

STAR

Apt Elev
107

Alt Set: IN (hPa on req) Trans level: FL140
TACAN Azimuth Required.

DAIGO ARRIVAL [GOT]



ROUTING

From over GOT TACAN, proceed via GOT R121 to JYUOH, turn RIGHT via D30.0 Arc HUC clockwise to intercept and proceed via HUC R080 to TAIYO. Cross JYUOH at or above 6000.

CHANGES: Bearing & distance from GOT TACAN to JYUOH.

© JEPPESEN, 2018, 2022. ALL RIGHTS RESERVED.

RJAH/IBR
HYAKURI

JEPPESEN

HYAKURI, JAPAN

18 MAR 22

10-2A

Eff 23 Mar 1500Z

RNAV STAR

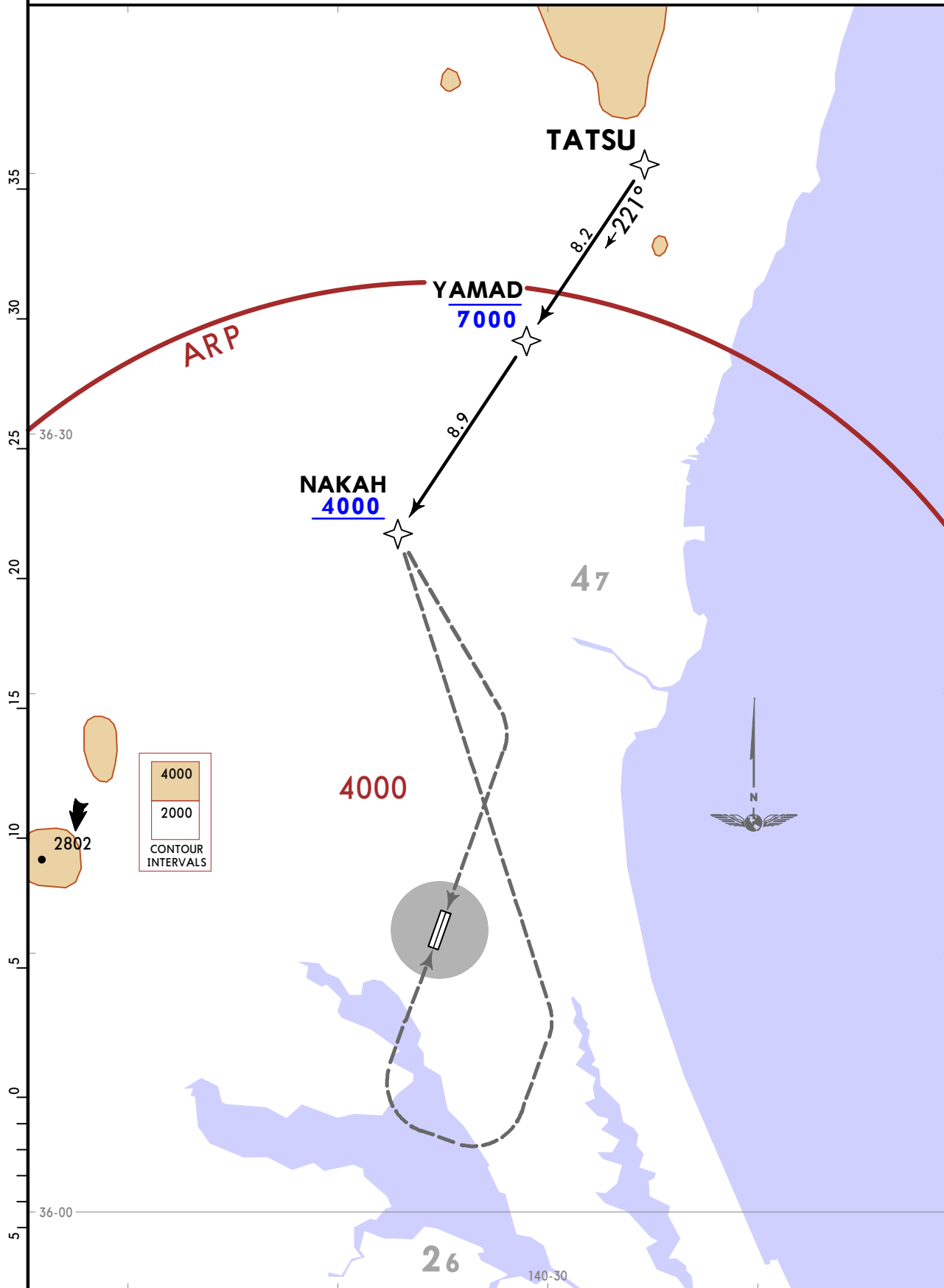
Apt Elev
107

Alt Set: IN (hPa on req) Trans level: FL140

RNAV1 DME/DME/IRU or GNSS required

RADAR service required.

TATSU ARRIVAL [TATSU]



ROUTING

From TATSU, to YAMAD at or below 7000, to NAKAH at or above 4000.

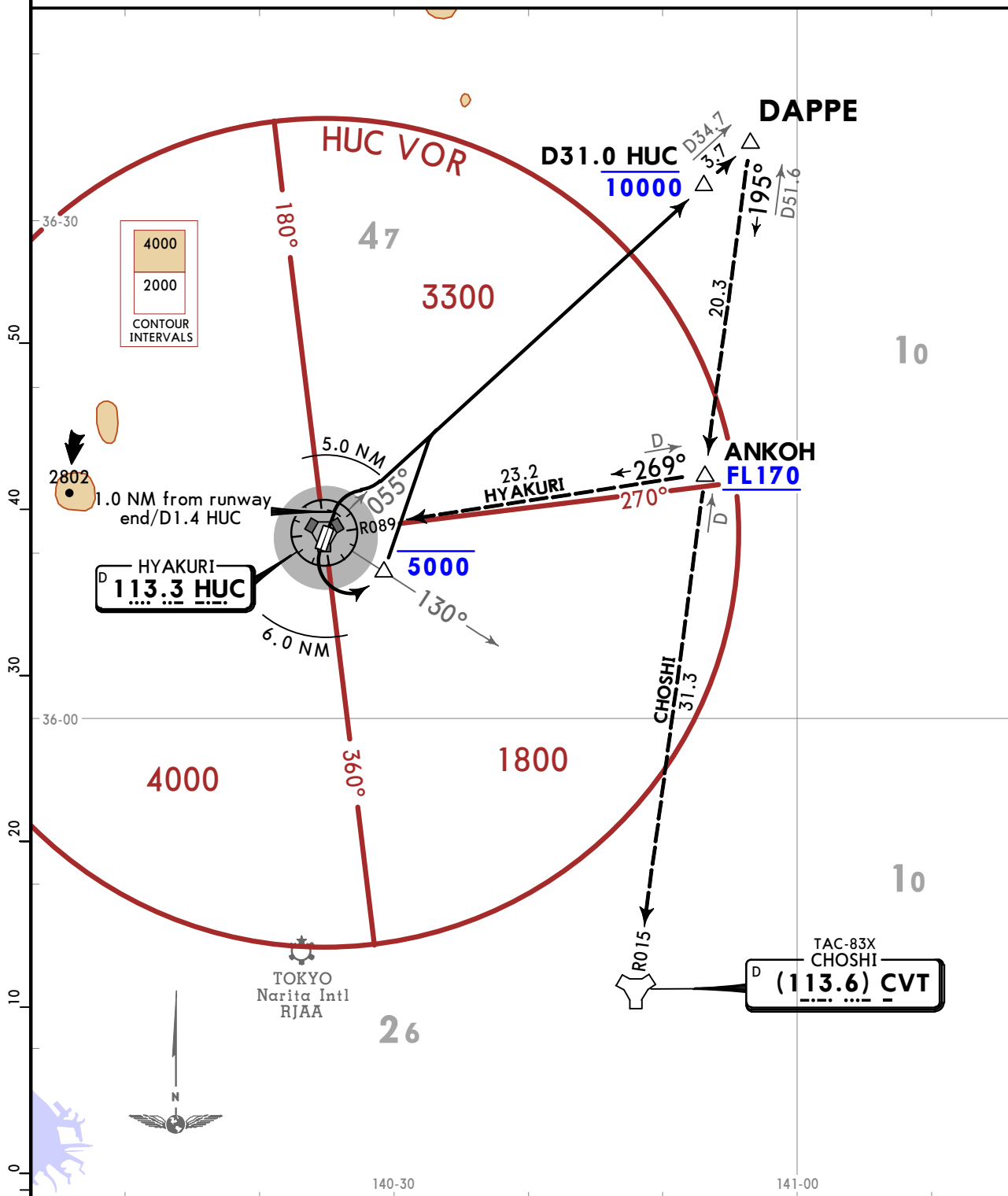
RJAH/IBR
HYAKURI

JEPPESEN
26 NOV 21 **10-3** **Eff 1 Dec 1500Z**

HYAKURI, JAPAN
SID

HYAKURI Departure (R) 120.1	Apt Elev 107	Trans alt: 14000 For TACAN equipped aircraft only.
---------------------------------------	------------------------	---

DAPPE 1 DEPARTURE [DAPPE1]
(ALL RWYS)



RWY	INITIAL CLIMB
03L/R	Climb via runway heading until 1.0 NM from runway end/D1.4 HUC, turn RIGHT within 5.0 NM.
21L/R	Turn LEFT within 6.0 NM. Cross HUC R130 at or below 5000.
ROUTING	
Climb via HUC R055 to DAPPE. Cross D31.0 HUC at or below 10000.	
TRANSITIONS	
CHOSHI	From over DAPPE, via CVT R015 to CVT TACAN via ANKOH. Cross ANKOH at or above FL170.
HYAKURI	From over DAPPE, via CVT R015 to ANKOH, via HUC R089 to HUC VOR. Cross ANKOH at or above FL170.

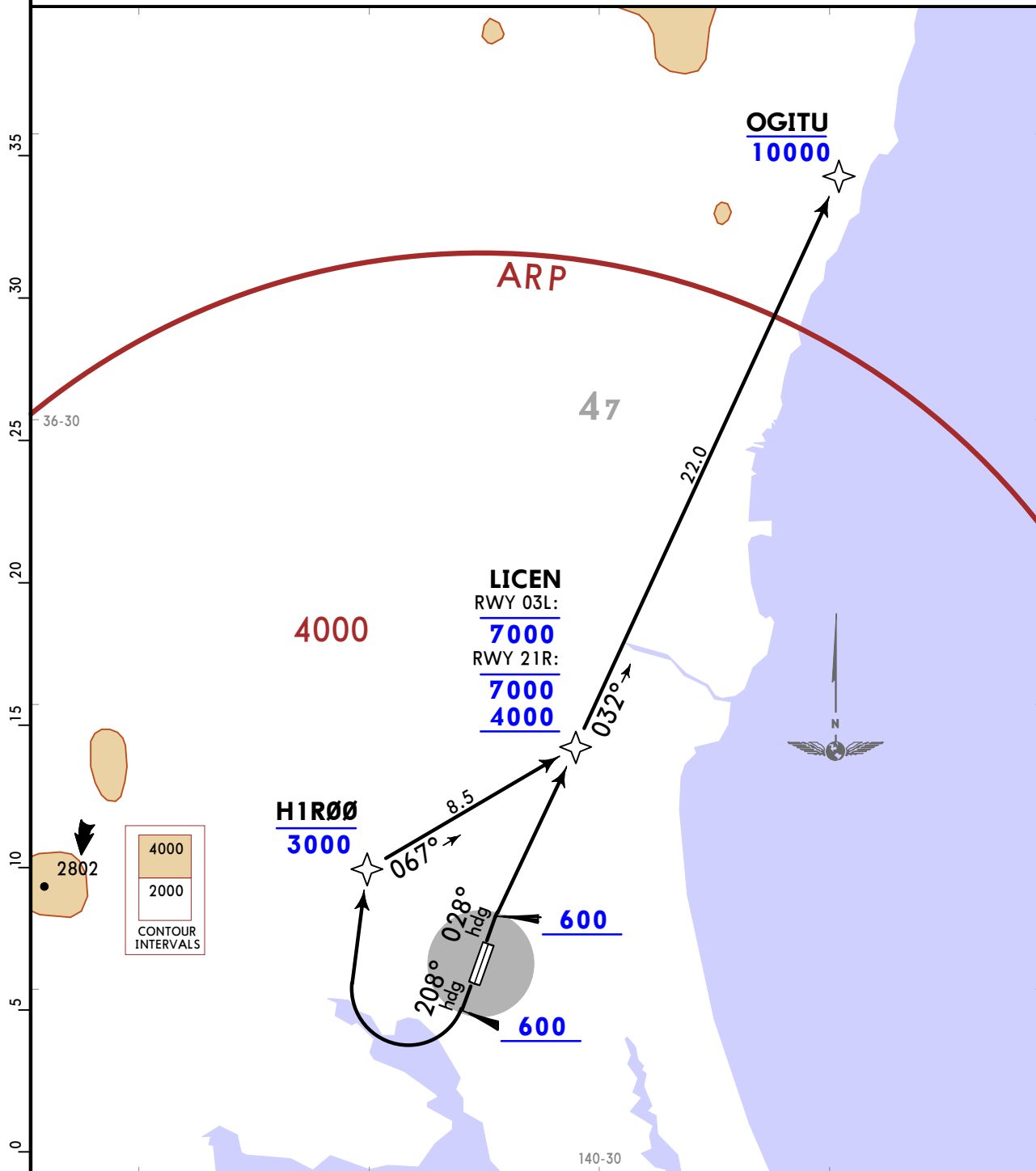
RJAH/IBR
HYAKURI

JEPPESEN
26 NOV 21 **(10-3A)** **Eff 1 Dec 1500Z**

HYAKURI, JAPAN
RNAV SID

HYAKURI Departure (R) 120.1	Apt Elev 107	Trans alt: 14000
		RNAV1 DME/DME/IRU or GNSS required
1. RADAR service required. 2. Aircraft equipped with only DME/DME/IRU must be able to update its position without delay at the starting point of take-off roll.		

HITAKA 1 DEPARTURE
[HITAK1]
(RWYS 03L, 21R)



Rwy 03L: 4.1% climb gradient required up to 600.

Gnd speed-KT	75	100	150	200	250	300
4.1% V/V (fpm)	311	415	623	830	1038	1246

OBSTACLE

Rwy 03L: 141 located at 0.1 NM 338° from end of Rwy 03L.

RWY	INITIAL CLIMB
03L	Climb on heading 028° at or above 600, direct to LICEN at or below 7000, to OGITU at or below 10000.
21R	Climb on heading 208° at or above 600, turn RIGHT direct to H1R00 at or below 3000, to LICEN at 4000 minimum, 7000 maximum, to OGITU at or below 10000.

CHANGES: New procedure at this airport.

© JEPPESEN, 2021. ALL RIGHTS RESERVED.

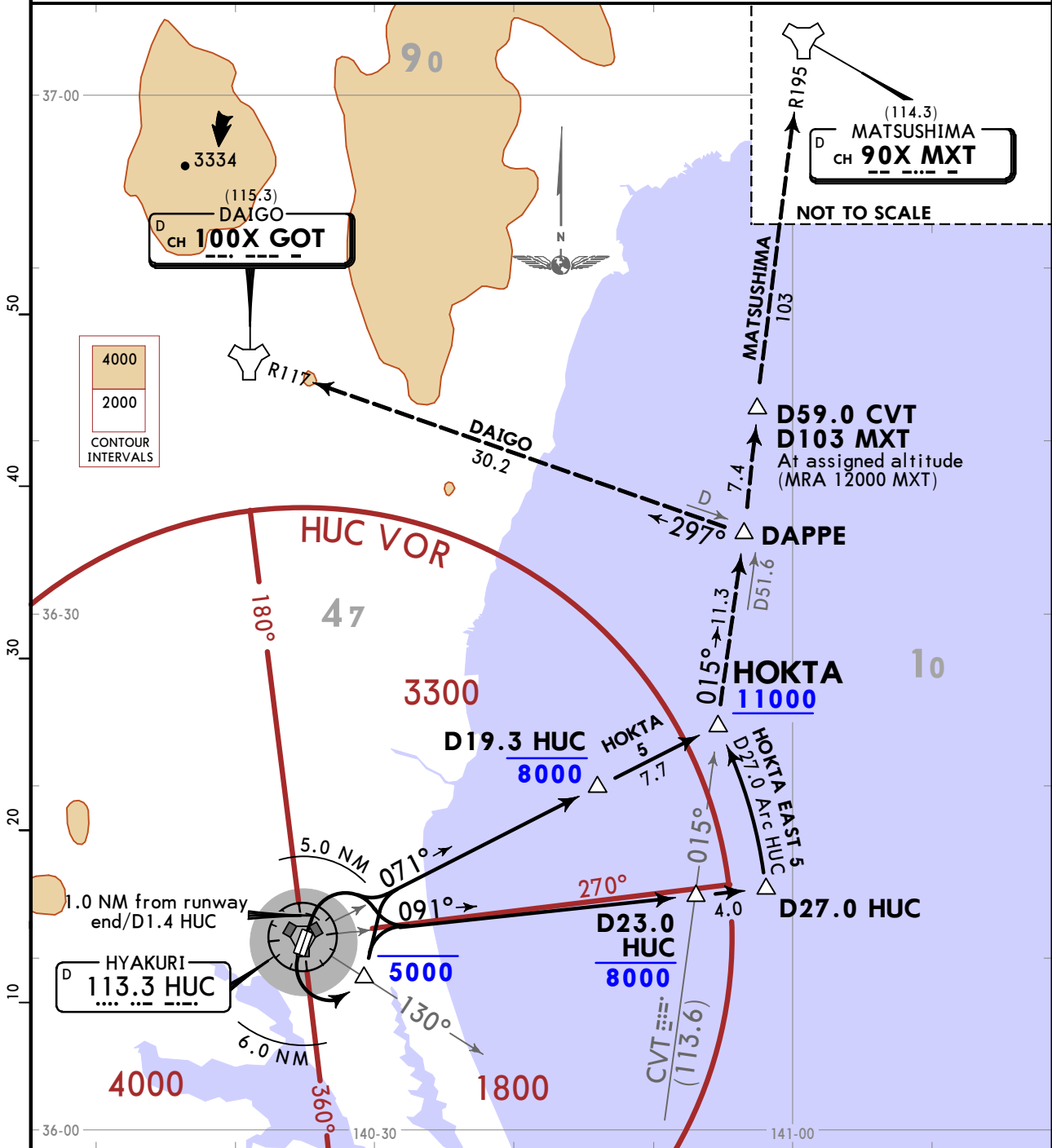
RJAH/IBR
HYAKURI

JEPPESSEN
20 JAN 23 **(10-3B)** Eff 25 Jan 1500Z

HYAKURI, JAPAN
SID

HYAKURI Departure (R) 120.1	Apt Elev 107	Trans alt: 14000 For TACAN equipped aircraft only.
---------------------------------------	------------------------	---

**HOKTA 5 [HOKTA5], HOKTA EAST 5 [HOKT5E]
DEPARTURES
(ALL RWYS)**



RWY	INITIAL CLIMB
03L/R	Climb via runway heading until 1.0 NM from runway end/D1.4 HUC, turn RIGHT within 5.0 NM.
21L/R	Turn LEFT within 6.0 NM. Cross HUC R130 at or below 5000.
SID	ROUTING
HOKTA 5	Climb via HUC R071 to HOKTA. Cross D19.3 HUC at or below 8000, cross HOKTA at or above 11000.
HOKTA EAST 5	Climb via HUC R091 to D27.0 HUC, turn LEFT via D27.0 Arc HUC counterclockwise to HOKTA. Cross D23.0 HUC at or below 8000, cross HOKTA at or above 11000.
TRANSITIONS	
DAIGO	From over HOKTA, via CVT R015 to DAPPE, via GOT R117 to GOT TACAN.
MATSUSHIMA	From over HOKTA, via CVT R015 to D59.0 CVT, MXT R195 to MXT TACAN. Cross D59.0 CVT (D103 MXT) at assigned altitude.

CHANGES: None.

© JEPPESSEN, 2018, 2022. ALL RIGHTS RESERVED.

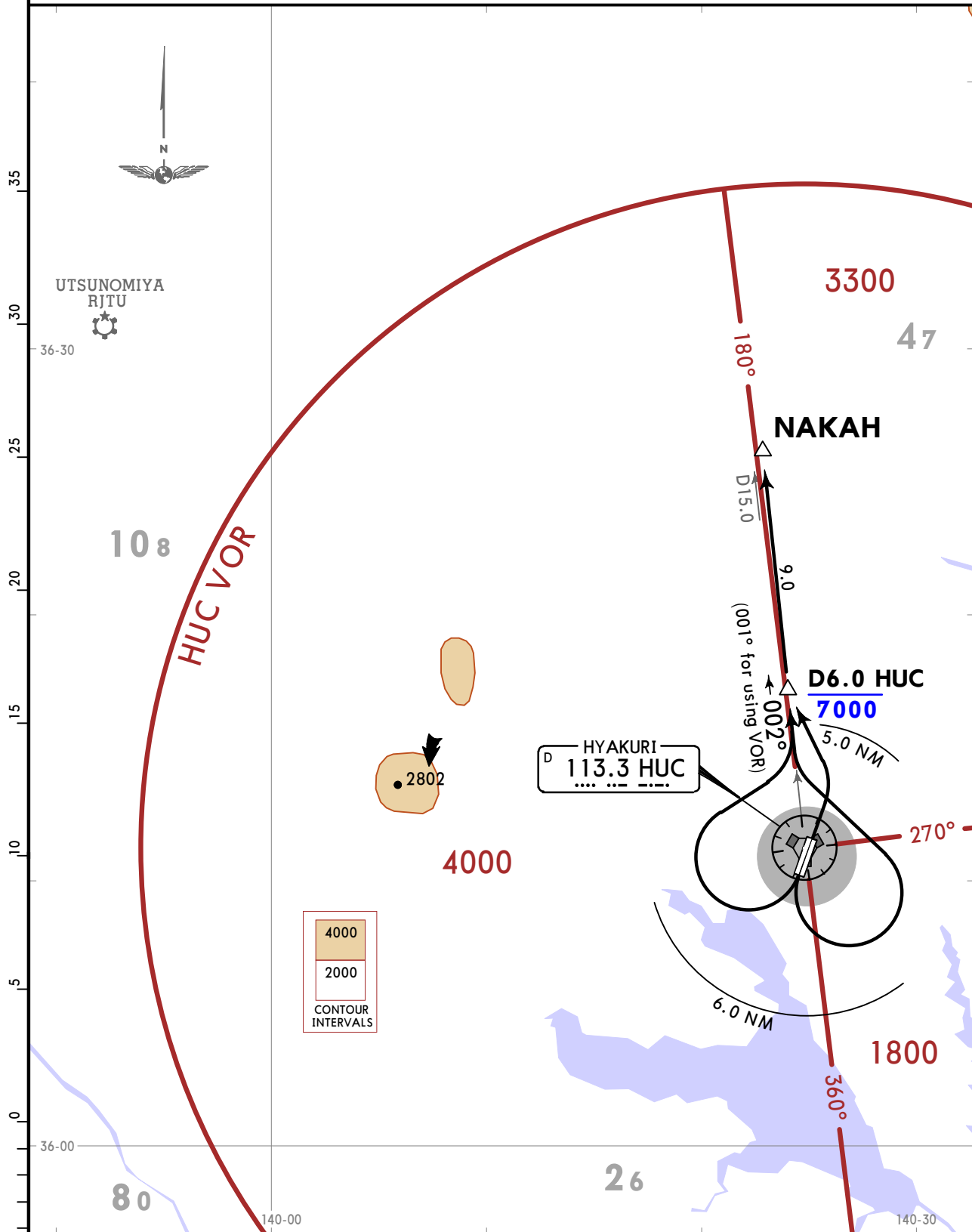
RJAH/IBR
HYAKURI

JEPPESEN
20 JAN 23 (10-3C) Eff 25 Jan 1500Z

HYAKURI, JAPAN
SID

HYAKURI Departure (R) 120.1	Apt Elev 107	Trans alt: 14000
--------------------------------	-----------------	------------------

NAKAH 4 DEPARTURE
[NAKAH4]
(ALL RWYS)



RWY	INITIAL CLIMB
03L/R	Turn LEFT within 5.0 NM.
21L/R	Turn RIGHT or LEFT within 6.0 NM.

ROUTING
Climb via HUC R002 (R001 for using VOR) to NAKAH. Cross D6.0 HUC at or below 7000.

RJAH/IBR
HYAKURI

JEPPESEN

HYAKURI, JAPAN

10 DEC 21 (10-3D)

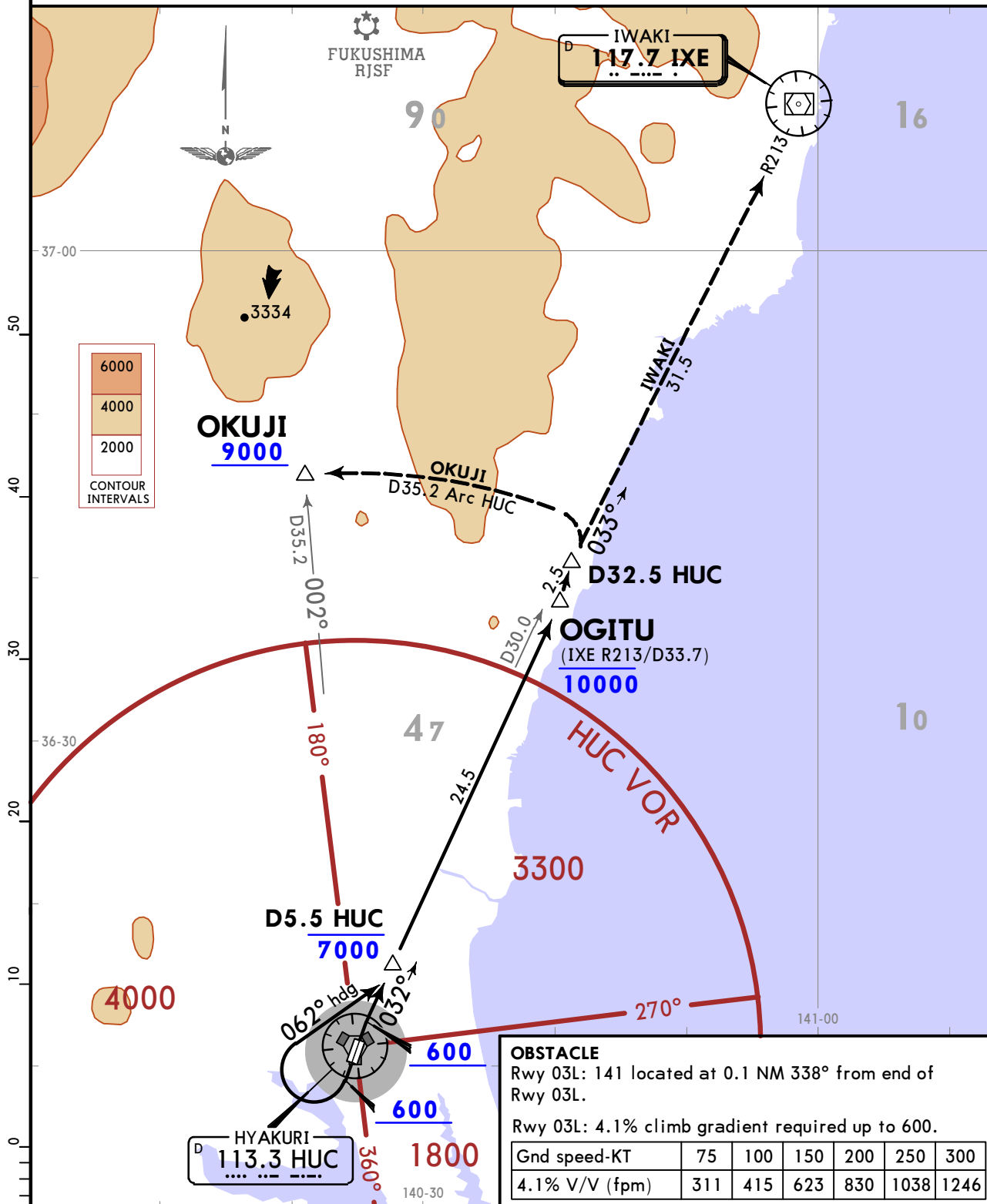
SID

HYAKURI Departure (R)
120.1

Apt Elev
107

Trans alt: 14000
For VOR equipped aircraft only.

OGITU 2 DEPARTURE [OGITU2]
(ALL RWYS)



OBSTACLE
Rwy 03L: 141 located at 0.1 NM 338° from end of Rwy 03L.
Rwy 03L: 4.1% climb gradient required up to 600.

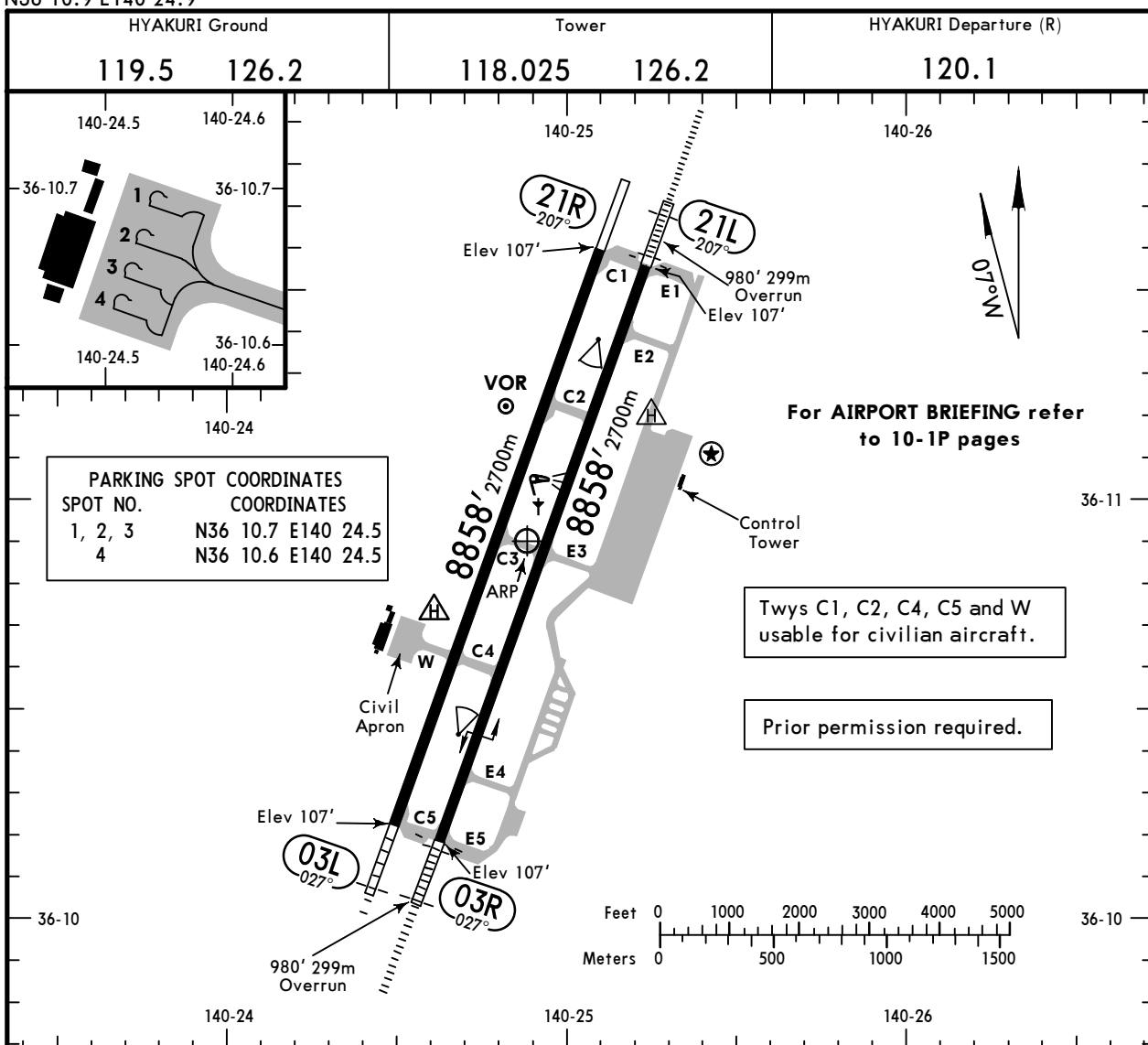
Gnd speed-KT	75	100	150	200	250	300
4.1% V/V (fpm)	311	415	623	830	1038	1246

RWY	INITIAL CLIMB
03L/R	Climb runway heading to 600, via HUC R032 to OGITU. Cross D5.5 HUC at or below 7000, cross OGITU at or below 10000.
21L/R	Climb runway heading to 600, turn RIGHT heading 062° to intercept and proceed via HUC R032 to OGITU. Cross D5.5 HUC at or below 7000, cross OGITU at or below 10000.
TRANSITIONS	
IWAKI	From over OGITU, proceed via IXE R213 to IXE VOR.
OKUJI	From over OGITU, via HUC R032 to D32.5 HUC, turn LEFT to intercept and proceed via D35.2 Arc HUC counterclockwise to OKUJI. Cross OKUJI at or above 9000.

RJAH/IBR
 Apt Elev **107'**
 N36 10.9 E140 24.9

JEPPESSEN
 4 FEB 22 **(11-1)**

HYAKURI, JAPAN
HYAKURI



ADDITIONAL RUNWAY INFORMATION

RWY	SURF	SIDEWALKS	PAPI	ANGLE	CONSTRUCTION	USABLE LENGTHS			WIDTH
						Threshold	Glide Slope	TAKE-OFF	
03L	HIRL	CL	SALS	PAPI-L (angle 2.75°)	Grooved	RVR			148'
21R	HIRL	CL	PAPI-L (angle 2.75°)		Grooved	RVR			45m
03R	HIRL	ALSF-I	PAPI-L (angle 2.75°)			RVR	7682'	2341m	148'
21L									45m

TAKE-OFF

	All Rws	
	Take-Off Alternate Apt Filed	Other
1 & 2 Eng	200' -800m	Available Landing Minimums
3 & 4 Eng		

TAKE-OFF FOR OGITU DEPARTURE AND HITAKA DEPARTURE only

	Rwys 03L, 21R				2 Rwys 03R, 21L				
	Multi Engine Acft				Multi Engine Acft				
	Take-Off Altn Apt. Filed			Without Take-off Altn Apt Filed	Single Eng Acft	Take-Off Altn Apt. Filed		Without Take-off Altn Apt Filed	Single Eng Acft
	1 HIRL & CL	1 HIRL or CL or RCLM	NIL (DAY ONLY)			1 HIRL or CL or RCLM	NIL (DAY ONLY)		
A	400m	VIS 500m	Available Landing Minimums	Available Landing Minimums	400m	VIS 500m	Available Landing Minimums	Available Landing Minimums	
B									
C									
D									

SIDs are designed in accordance with provisional standards for FLIGHT PROCEDURE DESIGN

1 HIRL and Runway Threshold Lights (which indicates DER) required for night operations.

2 RCLL not installed.

RJAH/IBR

JEPPESSEN

HYAKURI, JAPAN

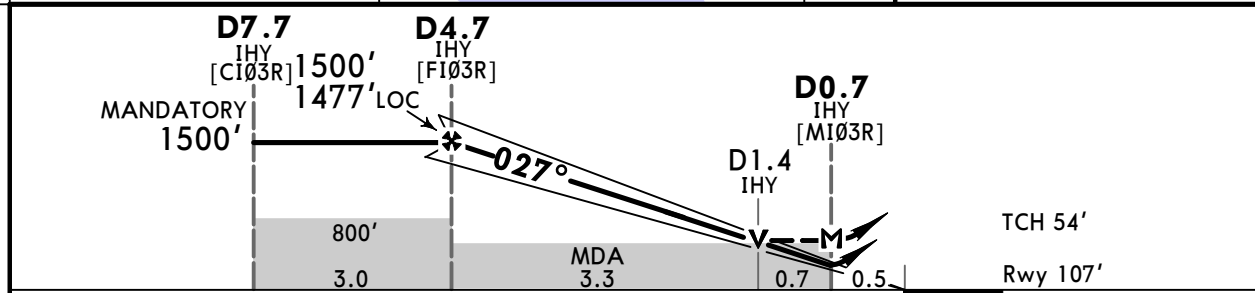
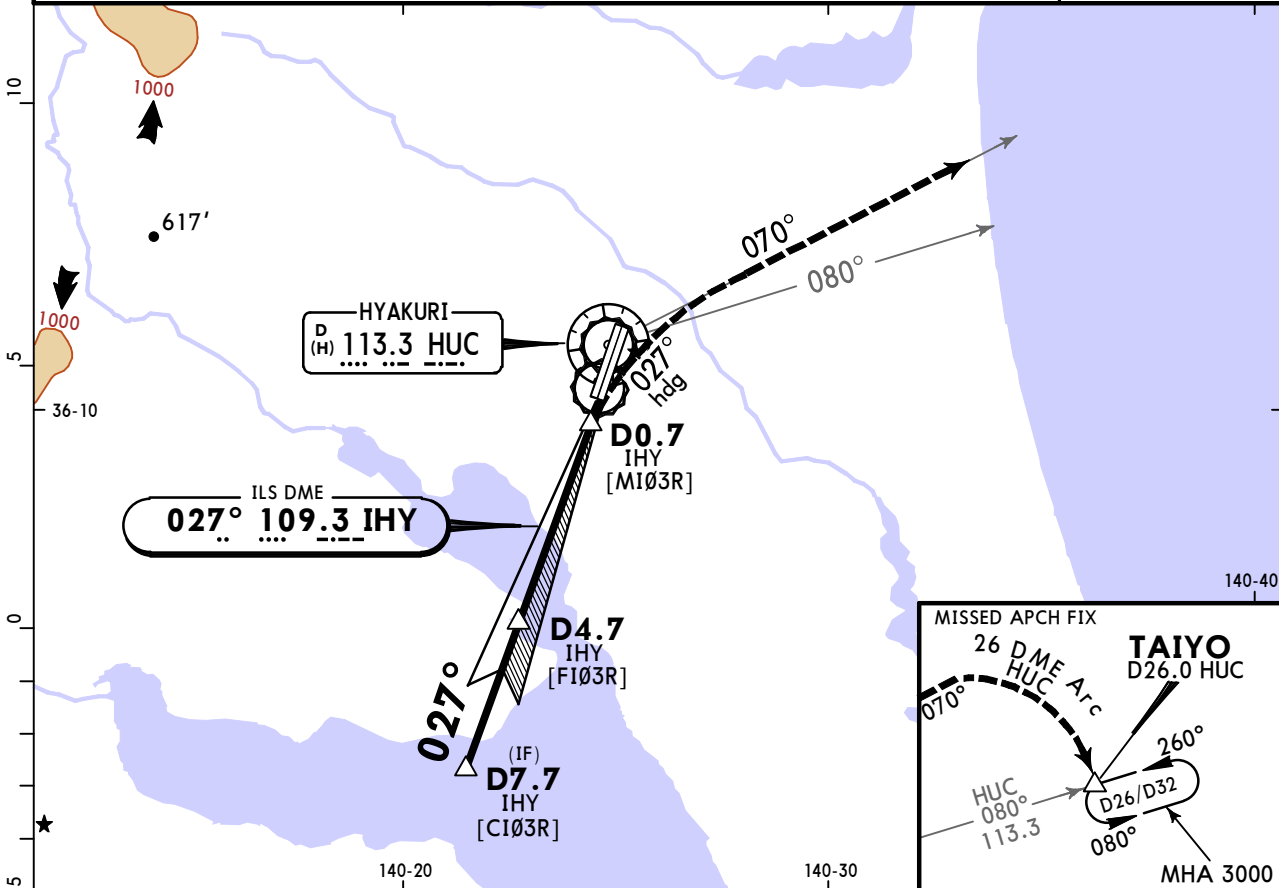
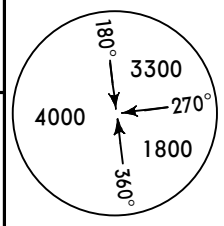
HYAKURI

4 FEB 22

(11-1)

ILS W or LOC W Rwy 03R

HYAKURI Approach (R) 120.1 123.875		HYAKURI Tower 118.025 126.2		Ground 119.5 126.2	
LOC IHY 109.3	Final Apch Crs 027°	Minimum Alt Refer to Profile	ILS DA(H) 307' (200')	Apt Elev 107' Rwy 107'	
<p>MISSED APCH: Climb on heading 027° to 600', turn RIGHT climb to 3000' outbound via HUC VOR R-070, via D26.0 HUC VOR clockwise Arc to TAIYO and hold. Contact HYAKURI APP.</p>					
Alt Set: IN (hPa on req)		Trans level: FL140		Trans alt: 14000'	
TACAN required.					



Gnd speed-Kts	70	90	100	120	140	160	ALSF-I PAPI	600' on ↑	027° hdg	3000' via RT	HUC 113.3 R-070
GS	2.75°	340	438	486	584	681					
MAP at D0.7 IHY							Timing not authorized for defining the MAP.				

STRAIGHT-IN LANDING RWY 03R				CIRCLE-TO-LAND	
ILS		LOC (GS out)		Max Kts	MDA(H)
DA(H) 307' (200')		MDA(H) 460' (353')			
FULL	ALS out	ALS out	ALS out		
A		RVR 900m	RVR 1500m	90	580' (473') -1600m
B		RVR 1000m	RVR 1800m	120	
C	RVR 750m	RVR 1000m	RVR 1800m	140	660' (553') -2400m
D		RVR 1400m	CMV 2000m	165	660' (553') -3200m

RJAH

JEPPESSEN

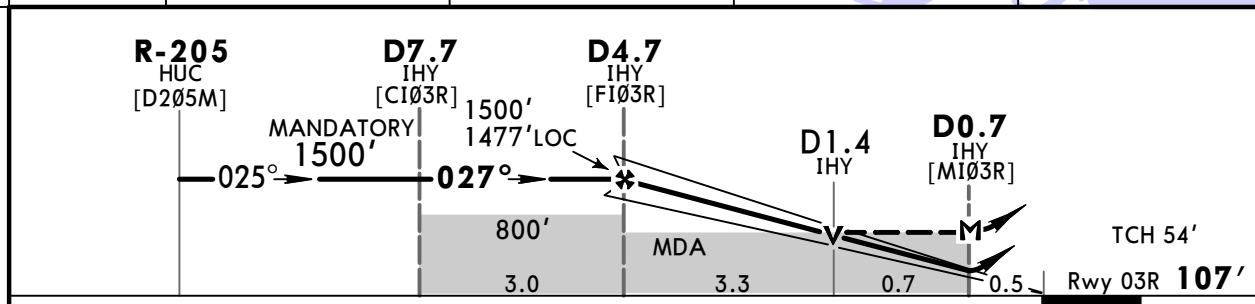
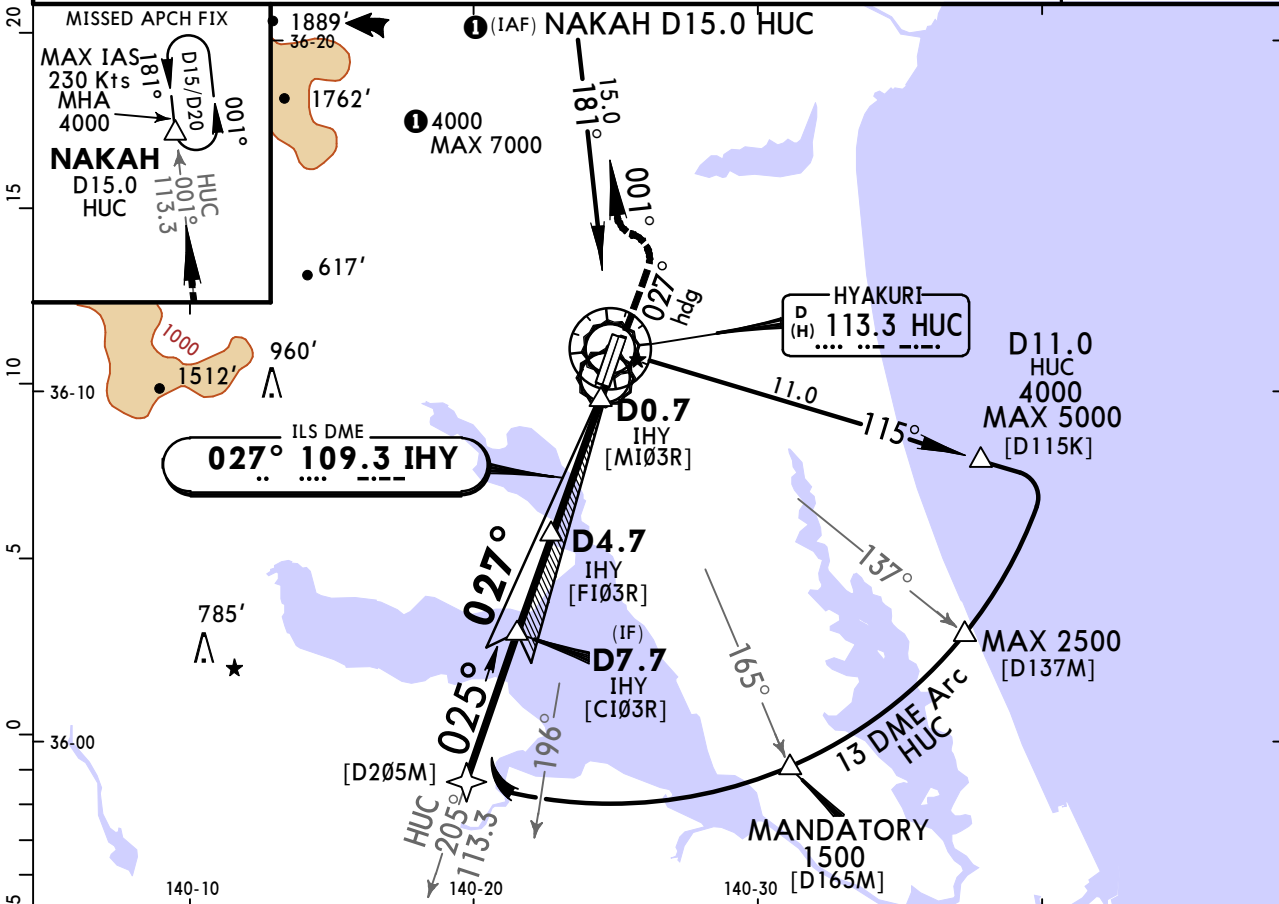
HYAKURI, JAPAN

HYAKURI

18 MAY 18
Eff 23 May 1500Z (11-2)

ILS X or LOC X Rwy 03R

HYAKURI Approach (R)		HYAKURI Tower		Ground	
120.1	123.87	118.02	126.2	119.5	126.2
LOC IHY 109.3	Final Apch Crs 027°	Minimum Alt Refer to Profile	ILS DA(H) 307' (200')	Apt Elev 107'	Rwy 03R 107'
MISSED APCH: Climb on heading 027° to 600', turn LEFT climb to 4000' outbound via HUC VOR R-001 to NAKAH and hold. Contact HYAKURI APP.					<p>MSA HUC VOR</p>
Alt Set: IN (hPa on req)		Trans level: FL 140		Trans alt: 14000'	
1. VOR DME required. 2. Timing not authorized for defining the MAP.					



Gnd speed-Kts	70	90	100	120	140	160	ALSF-I PAPI	600' on 027° hdg 4000' via LT	HUC 113.3 R-001
GS	2.75°	340	438	486	584	681			
MAP at D0.7 IHY									

STRAIGHT-IN LANDING RWY 03R				CIRCLE-TO-LAND					
ILS		LOC (GS out)		Max Kts	MDA(H)				
FULL	ALS out	ALS out	ALS out						
A	RVR 750m	RVR 1000m	RVR 900m	RVR 1500m	90	580' (473') -1600m			
			RVR 1000m	RVR 1800m					
			B	RVR 750m	RVR 1000m	RVR 1400m	CMV 2000m	140	580' (473') -2400m
						RVR 1400m	CMV 2000m		

CHANGES: Topography.

© JEPPESSEN, 2008, 2018. ALL RIGHTS RESERVED.

RJAH

JEPPESSEN

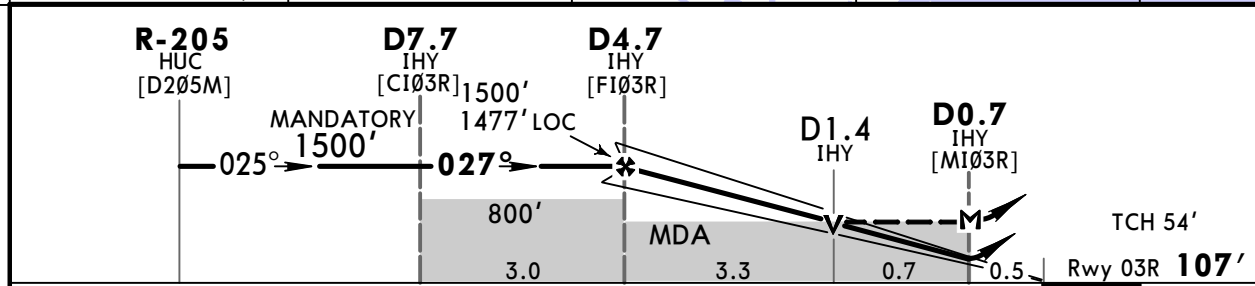
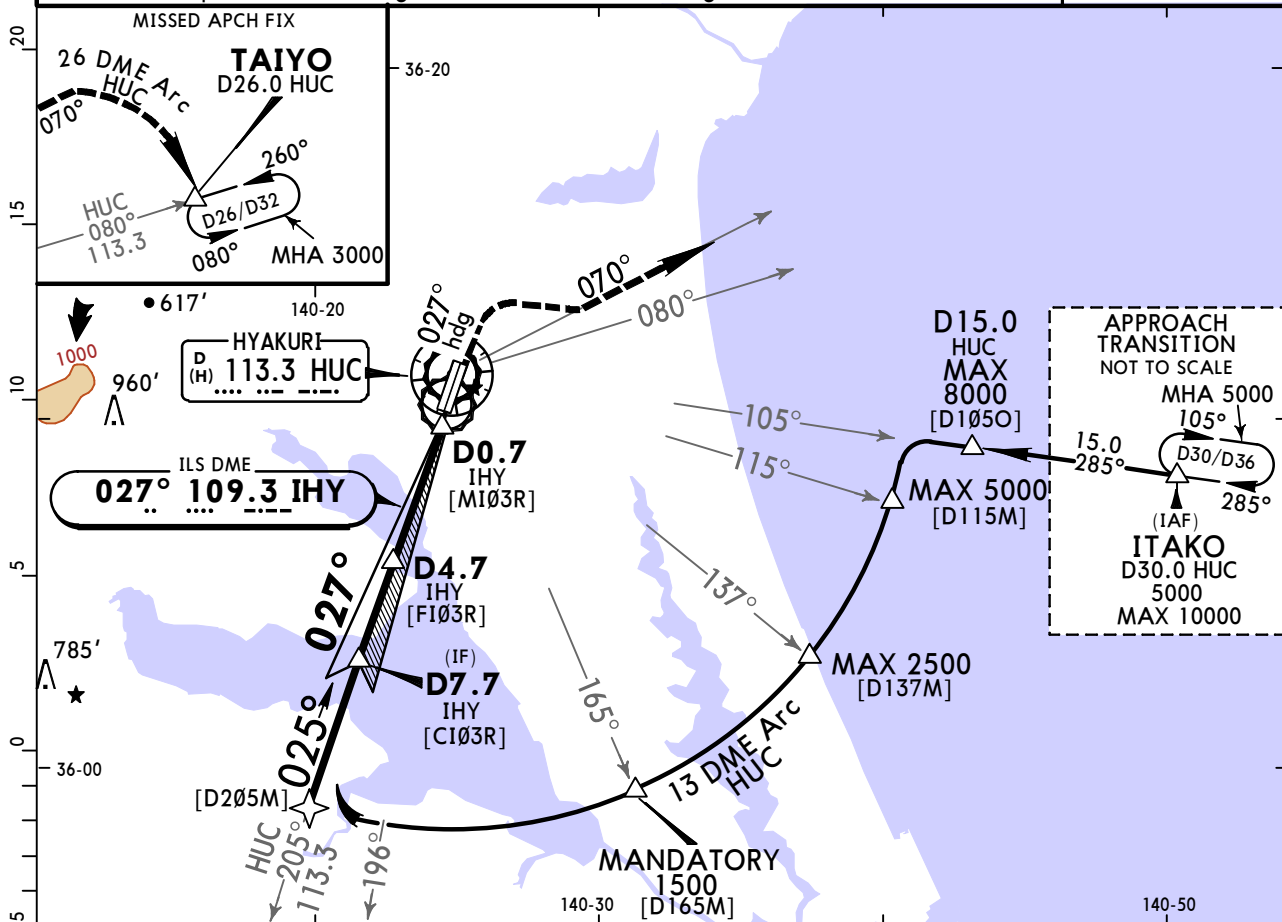
HYAKURI, JAPAN

HYAKURI

18 MAY 18
Eff 23 May 1500Z (11-3)

ILS Y or LOC Y Rwy 03R

HYAKURI Approach (R) 120.1 123.87		HYAKURI Tower 118.02 126.2		Ground 119.5 126.2	
LOC IHY 109.3	Final Apch Crs 027°	Minimum Alt Refer to Profile	ILS DA(H) 307' (200')	Apt Elev 107'	Rwy 03R 107'
<p>MISSED APCH: Climb on heading 027° to 600', turn RIGHT climb to 3000' outbound via HUC VOR R-070, via HUC VOR D26.0 clockwise Arc to TAIYO and hold. Contact HYAKURI APP.</p>					
<p>Alt Set: IN (hPa on req) Trans level: FL 140 Trans alt: 14000'</p> <p>1. TACAN required. 2. Timing not authorized for defining the MAP.</p>					



Gnd speed-Kts	70	90	100	120	140	160		<p>600' on 027° hdg</p>	<p>3000' via HUC 113.3 R-070</p>
GS	2.75°	340	438	486	584	681			
MAP at D0.7 IHY									

STRAIGHT-IN LANDING RWY 03R				CIRCLE-TO-LAND	
ILS		LOC (GS out)		Max Kts	MDA(H)
DA(H) 307'(200')		MDA(H) 460'(353')			
FULL	ALS out	ALS out	ALS out		
A		RVR 900m	RVR 1500m	90	580' (473') -1600m
B		RVR 1000m	RVR 1800m	120	
C	RVR 750m	RVR 1000m	RVR 1800m	140	660' (553') -2400m
D		RVR 1400m	CMV 2000m	165	660' (553') -3200m

CHANGES: LOC minimums.

© JEPPESSEN, 2008, 2018. ALL RIGHTS RESERVED.

RJAH

JEPPESSEN

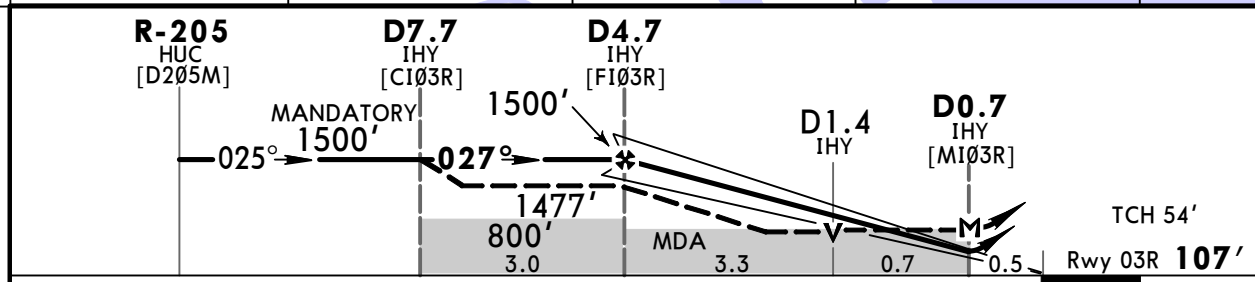
HYAKURI, JAPAN

HYAKURI

18 MAY 18
Eff 23 May 1500Z (11-4)

ILS Z or LOC Z Rwy 03R

HYAKURI Approach (R) 120.1 123.87		HYAKURI Tower 118.02 126.2		Ground 119.5 126.2	
LOC IHY 109.3	Final Apch Crs 027°	Minimum Alt Refer to Profile	ILS DA(H) 307' (200')	Apt Elev 107'	Rwy 03R 107'
MISSED APCH: Climb on heading 027° to 600', turn RIGHT climb to 3000' outbound via HUC VOR R-070, via HUC VOR D26.0 clockwise Arc to TAIYO and hold. Contact HYAKURI APP.					
Alt Set: IN (hPa on req) Trans level: FL 140 Trans alt: 14000' 1. TACAN required. 2. Timing not authorized for defining the MAP.					



Gnd speed-Kts	70	90	100	120	140	160	ALSF-I PAPI	600' on 027° hdg ↑	3000' via RT 113.3 R-070
GS	2.75°	340	438	486	584	681			
MAP at D0.7 IHY									

STRAIGHT-IN LANDING RWY 03R				CIRCLE-TO-LAND	
ILS		LOC (GS out)		Max Kts	MDA(H)
FULL	ALS out	FULL	ALS out		
A			RVR 900m	90	580' (473') -1600m
B			RVR 1000m	120	
C	RVR 750m	RVR 1000m	RVR 1800m	140	660' (553') -2400m
D			RVR 1400m	165	660' (553') -3200m

RJAH/IBR

JEPPESSEN

HYAKURI, JAPAN

HYAKURI

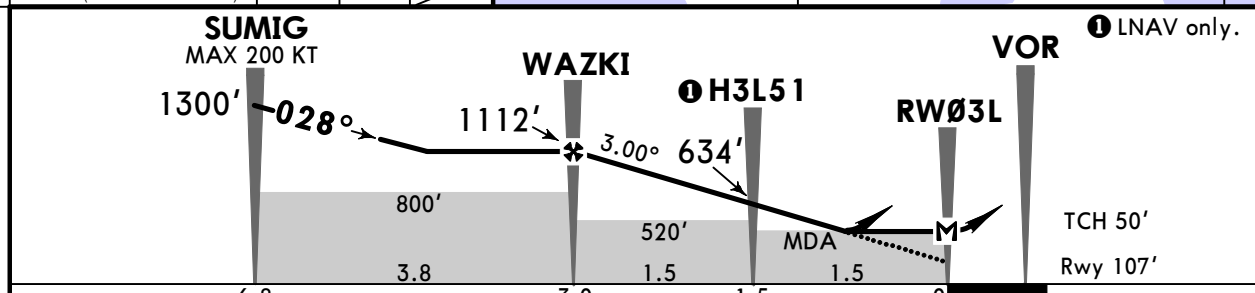
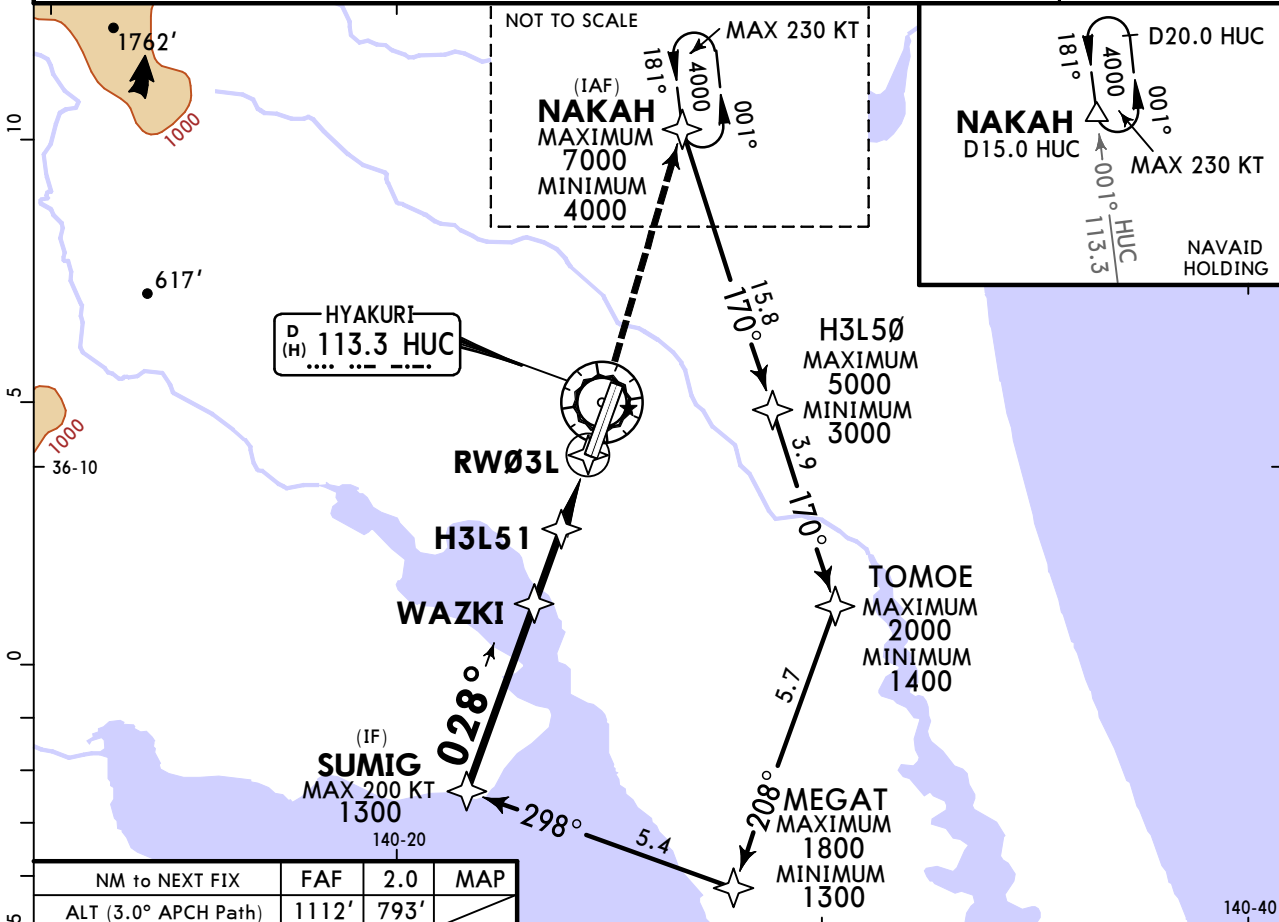
30 SEP 22

12-1

Eff 5 Oct 1500Z

RNP Rwy 03L

HYAKURI Approach (R)		HYAKURI Tower		Ground		
120.1	123.875	118.025	126.2	119.5	126.2	
RNAV	Final Apch Crs 028°	Refer to Profile	LNAV/VNAV DA(H) 490' (383')	Apt Elev 107' Rwy 107'		
MISSED APCH: Turn LEFT direct to NAKAH and hold at 4000'. Contact HYAKURI APP. Using VORTAC: Turn LEFT, climb to 4000' via HUC VOR R-001 to NAKAH and hold. Contact HYAKURI APP.						
RNP Apch	Alt Set: IN (hPa on req)	Trans level: FL140		Trans alt: 14000'		
1. Baro-VNAV not authorized below -10°C. 2. PAPI and descent angles not coincident.						



Gnd speed-Kts	70	90	100	120	140	160	SALS	PAPI	LT	NAKAH
Glide Path Angle 3.00°	372	478	531	637	743	849				
MAP at RW03L										

STRAIGHT-IN LANDING RWY 03L				CIRCLE-TO-LAND	
LNAV/VNAV DA(H) 490' (383')		LNAV MDA(H) 490' (383')		Max Kts	MDA(H)
ALS out	ALS out	ALS out	ALS out		
A	RVR 1200m	RVR 1500m	RVR 1200m	90	580' (473') -1600m
B	RVR 1300m	RVR 1500m	RVR 1300m	120	
C	RVR 1400m	RVR 1800m	RVR 1400m	140	580' (473') -2400m
D	RVR 1600m	CMV 2000m	RVR 1600m	165	660' (553') -3200m

RJAH/IBR

JEPPESSEN

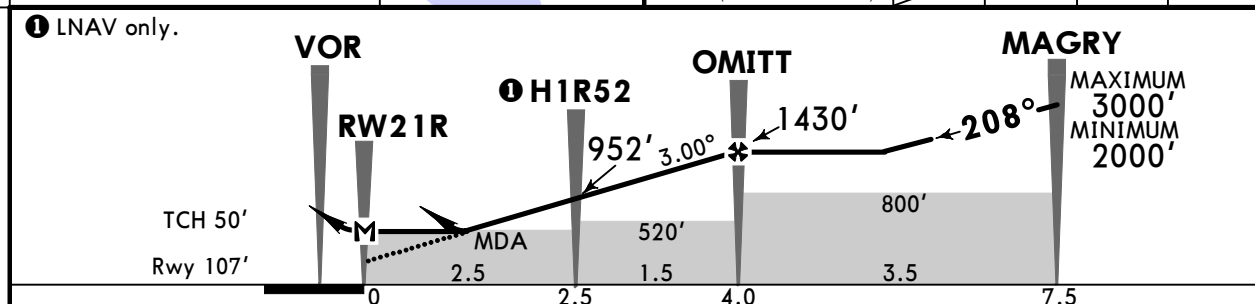
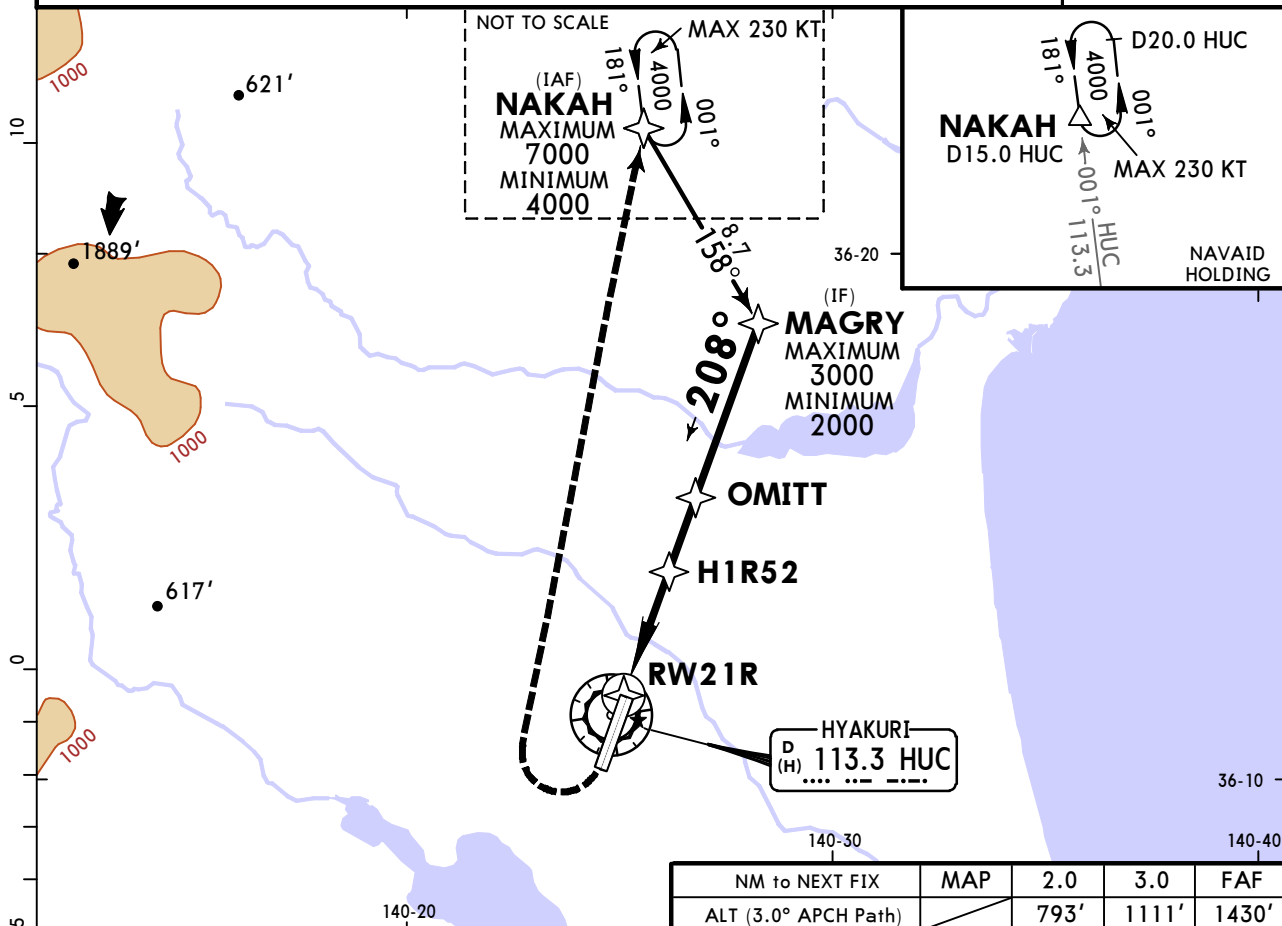
HYAKURI, JAPAN

HYAKURI

30 SEP 22
Eff 5 Oct 1500Z (12-2)

RNP Rwy 21R

HYAKURI Approach (R) 120.1 123.875		HYAKURI Tower 118.025 126.2		Ground 119.5 126.2		
RNAV	Final Apch Crs 208°	Refer to Profile	LNAV/VNAV DA(H) Refer to Minimums	Apt Elev 107' Rwy 107'		
MISSED APCH: Turn RIGHT direct to NAKAH and hold at 4000'. Contact HYAKURI APP. Using VORTAC: Turn RIGHT heading 046° to intercept and proceed via HUC VOR R-001 to NAKAH and hold at 4000'. Contact HYAKURI APP.						
RNP Apch	Alt Set: IN (hPa on req)	Trans level: FL140	Trans alt: 14000'			
1. Baro-VNAV not authorized below -10°C. 2. PAPI and descent angles not coincident.						



Gnd speed-Kts	70	90	100	120	140	160	PAPI-L	
Glide Path Angle	3.00°	372	478	531	637	849		
MAP at RW21R								

STRAIGHT-IN LANDING RWY 21R				CIRCLE-TO-LAND	
LNAV/VNAV		LNAV		Max Kts	MDA(H)
DA(H)	A, B, C: 500' (393') D: 520' (413')	MDA(H)	A, B, C: 500' (393') D: 520' (413')		
A	RVR 1500m	RVR 1500m		90	580' (473') -1600m
B	RVR 1800m	RVR 1800m		120	
C	RVR 1800m	RVR 1800m		140	580' (473') -2400m
D	CMV 2000m	CMV 2000m		165	
					660' (553') -3200m

RJAH

JEPPESEN

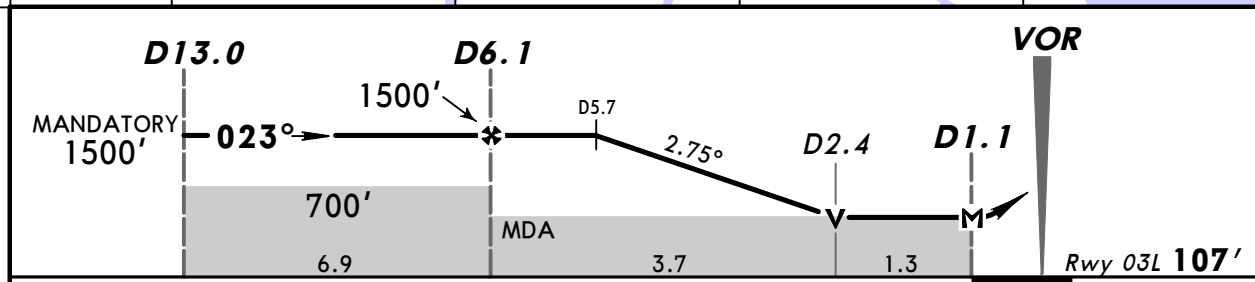
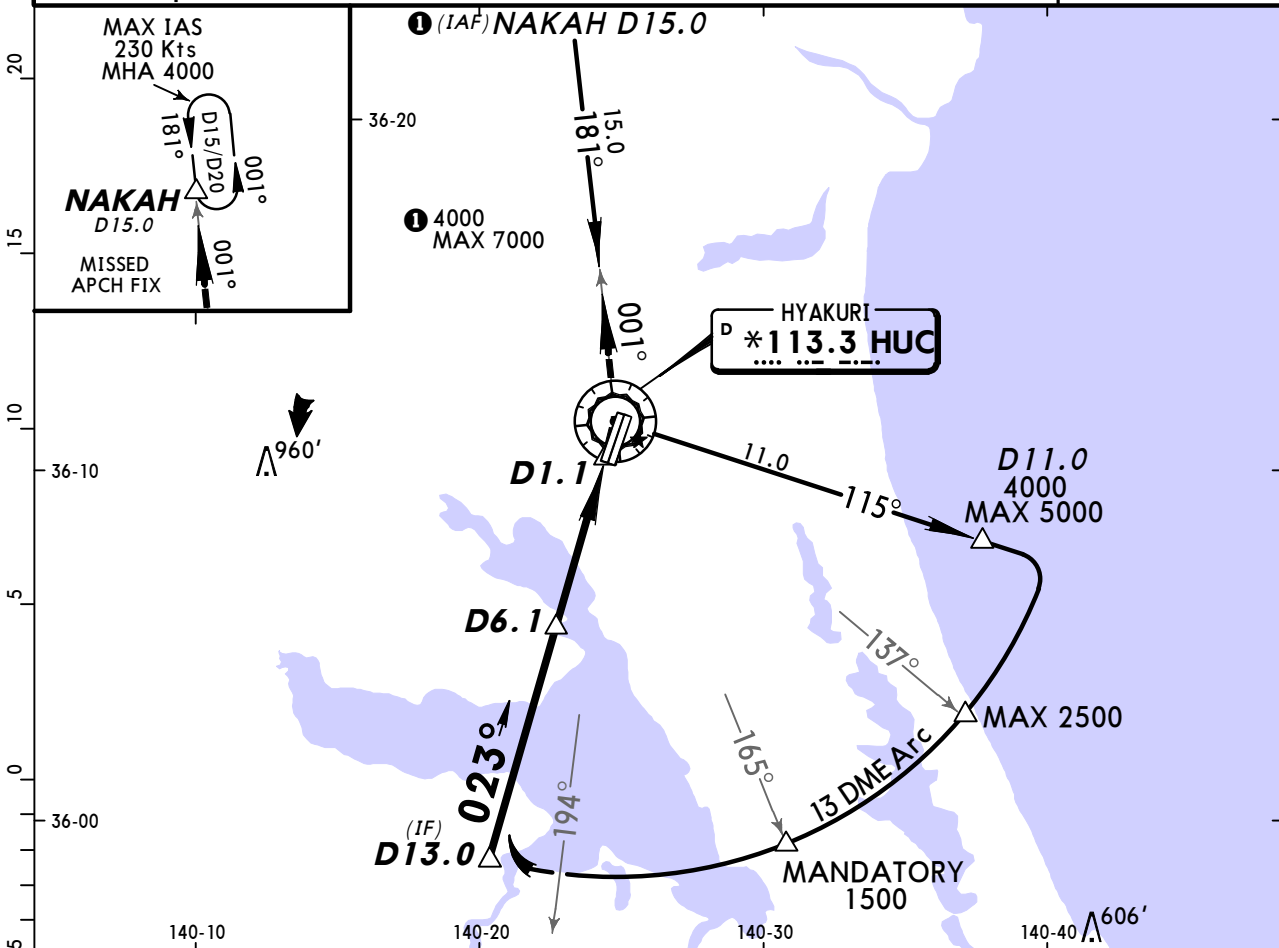
HYAKURI, JAPAN

HYAKURI

13 MAY 11 (13-1)

VOR Rwy 03L

HYAKURI Approach (R) 120.1 123.87		HYAKURI Tower 118.02 126.2		Ground 119.5 126.2	
VOR HUC *113.3	Final Apch Crs 023°	Minimum Alt Refer to Profile	MDA(H) 520' (413')	Apt Elev 107'	Rwy 03L 107'
MISSED APCH: Turn LEFT, climb to 4000' outbound via HUC VOR R-001 to NAKAH and hold. Contact HYAKURI APP. Timing not authorized for defining the MAP.					
Alt Set: IN (hPa on req)		Trans level: FL 140		Trans alt: 14000'	
1. DME required.					



Gnd speed-Kts	70	90	100	120	140	160	SSALS PAPI	LT	4000' via *113.3 HUC NAKAH R-001
Descent angle 2.75°	340	438	486	584	681	778			
MAP at D1.1									

STRAIGHT-IN LANDING RWY 03L				CIRCLE-TO-LAND	
MDA(H) 520' (413')				MDA(H)	
	RVR	ALS out	Max Kts		
A	RVR 1200m	RVR 1500m	90	580' (473') - 1600m	
B	RVR 1300m	RVR 1800m	120	580' (473') - 2400m	
C	RVR 1400m	CMV 2000m	140	660' (553') - 3200m	
D	RVR 1600m		165		

CHANGES: Procedure altitudes.

© JEPPESEN, 2010, 2011. ALL RIGHTS RESERVED.

RJAH

JEPPESEN

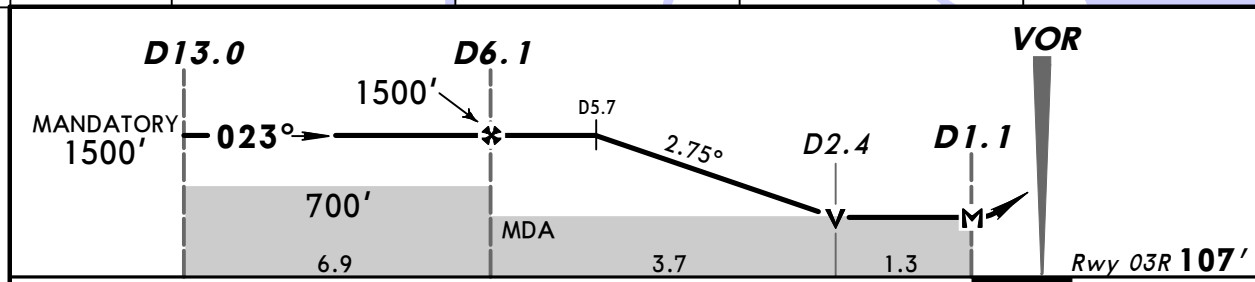
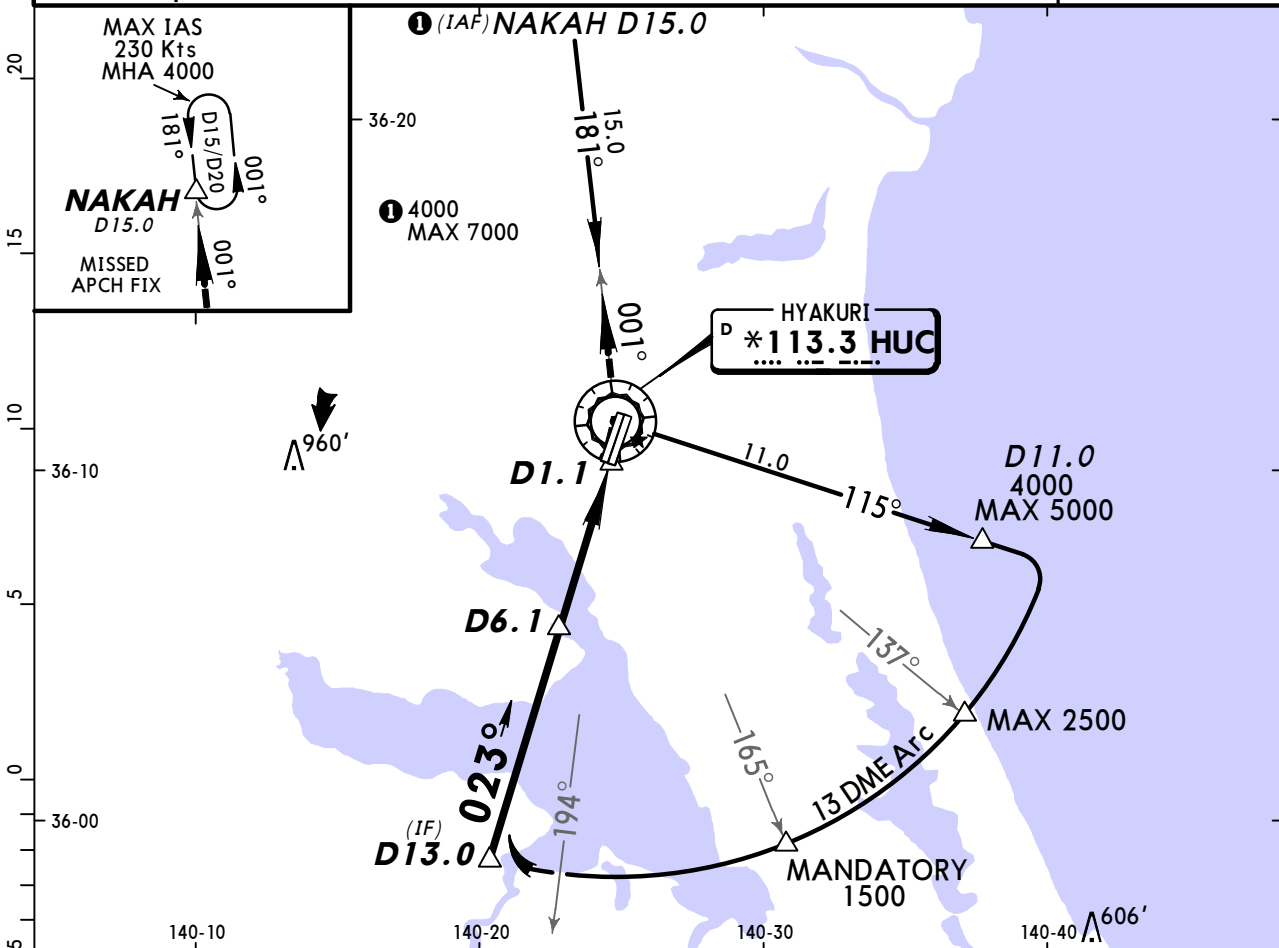
HYAKURI, JAPAN

HYAKURI

13 MAY 11 **(13-2)**

VOR Rwy 03R

HYAKURI Approach (R) 120.1 123.87		HYAKURI Tower 118.02 126.2		Ground 119.5 126.2	
VOR HUC * 113.3	Final Apch Crs 023°	Minimum Alt Refer to Profile	MDA(H) 520' (413')	Apt Elev 107'	Rwy 03R 107'
MISSED APCH: Turn LEFT, climb to 4000' outbound via HUC VOR R-001 to NAKAH and hold. Contact HYAKURI APP. Timing not authorized for defining the MAP.					<p>MSA HUC VOR</p>
Alt Set: IN (hPa on req)		Trans level: FL 140		Trans alt: 14000'	



Gnd speed-Kts	70	90	100	120	140	160	ALSIF-I PAPI	LT	4000' via *113.3 R-001	HUC NAKAH
Descent angle 2.75°	340	438	486	584	681	778				
MAP at D1.1										

STRAIGHT-IN LANDING RWY 03R				CIRCLE-TO-LAND	
MDA(H) 520' (413')				MDA(H)	
		ALS out	Max Kts		
A	RVR 900m	RVR 1500m	90	580' (473')-1600m	
B	RVR 1000m	RVR 1800m	120	580' (473')-2400m	
C	RVR 1400m	CMV 2000m	140	660' (553')-3200m	

CHANGES: Procedure altitudes.

© JEPPESEN, 2010, 2011. ALL RIGHTS RESERVED.

RJAH

JEPESEN

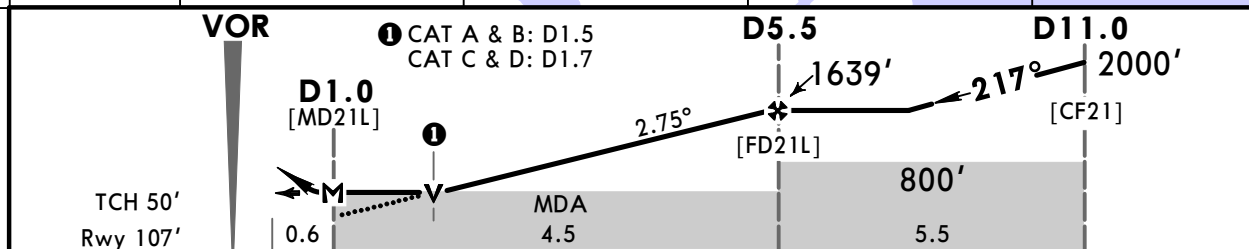
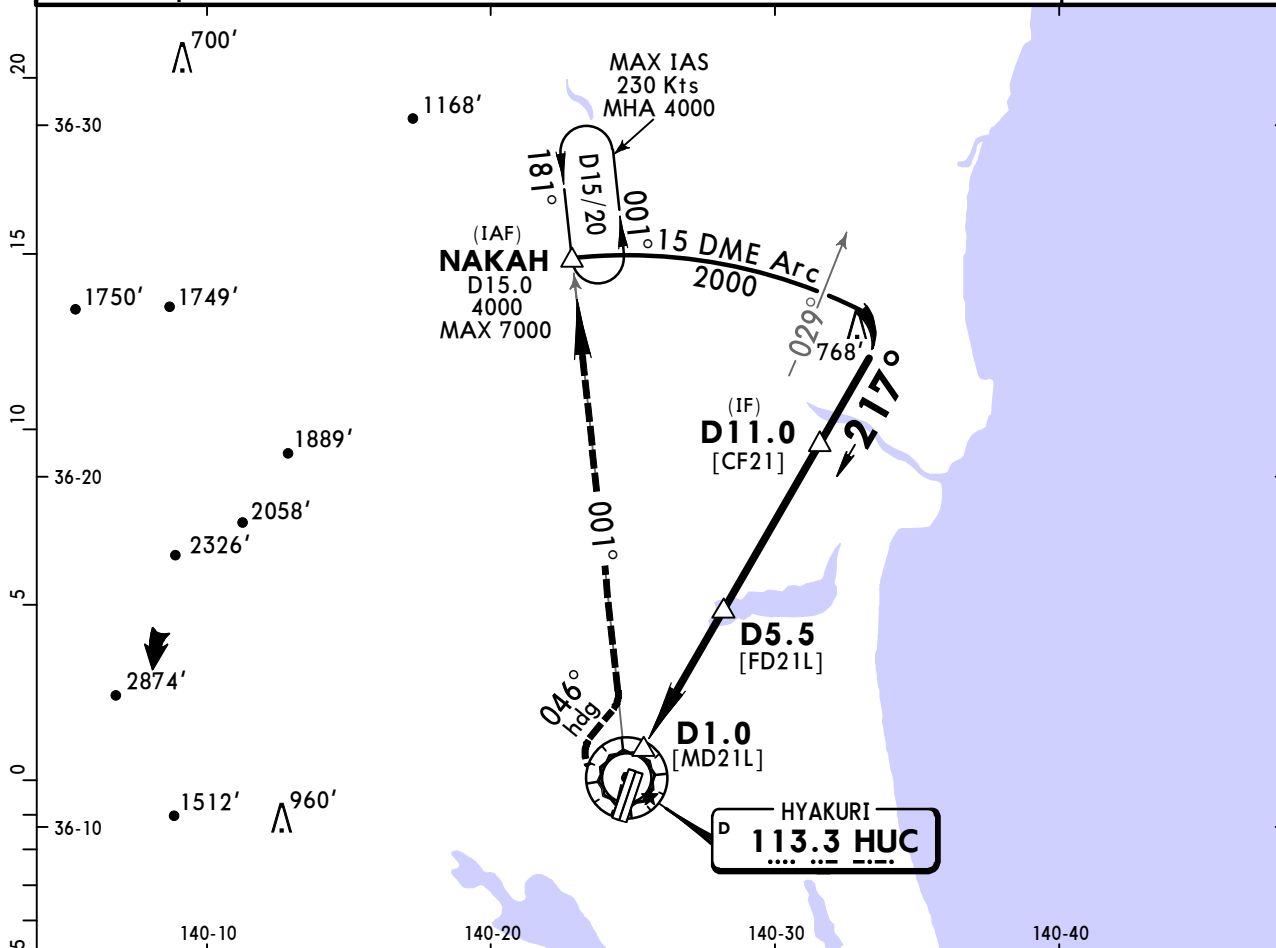
HYAKURI, JAPAN

HYAKURI

1 JUN 18 (13-3)

VOR Rwy 21L

HYAKURI Approach (R) 120.1 123.87		HYAKURI Tower 118.02 126.2		Ground 119.5 126.2	
VOR HUC 113.3	Final Apch Crs 217°	Minimum Alt Refer to Profile	MDA(H) Refer to Minimums	Apt Elev 107'	
MISSED APCH: Turn RIGHT, climb on heading 046° to intercept and proceed outbound via HUC VOR R-001 to NAKAH and hold at 4000'. Contact HYAKURI APP. Timing not authorized for defining the MAP.					
Alt Set: IN (hPa on req) 1. DME required.		Trans level: FL 140		Trans alt: 14000'	



Gnd speed-Kts	70	90	100	120	140	160	ALSF-I PAPI RT ↑ on 046° via 113.3 hdg R-001
Descent Angle	2.75°	340	438	486	584	778	
MAP at D1.0							

STRAIGHT-IN LANDING RWY 21L			CIRCLE-TO-LAND		
	ALS out	Max Kts	MDA(H)		
A	RVR 900m	90	580' (473') -1600m		
B	RVR 1000m	120	580' (473') -2400m		
C	RVR 1400m	140	660' (553') -3200m		
D	CMV 2000m	165			

RJAH

JEPESEN

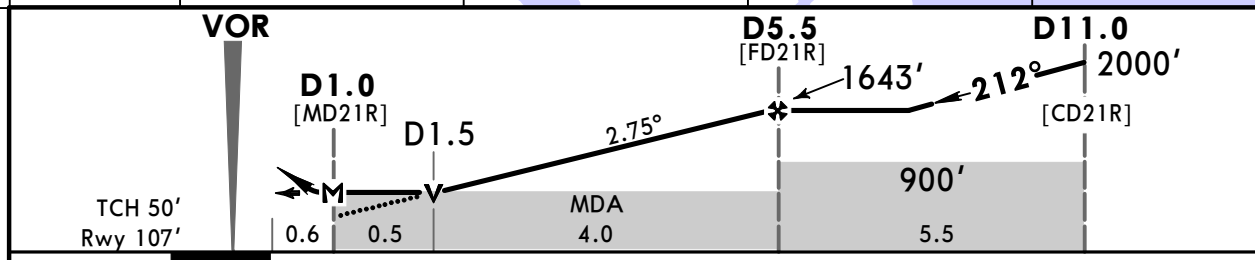
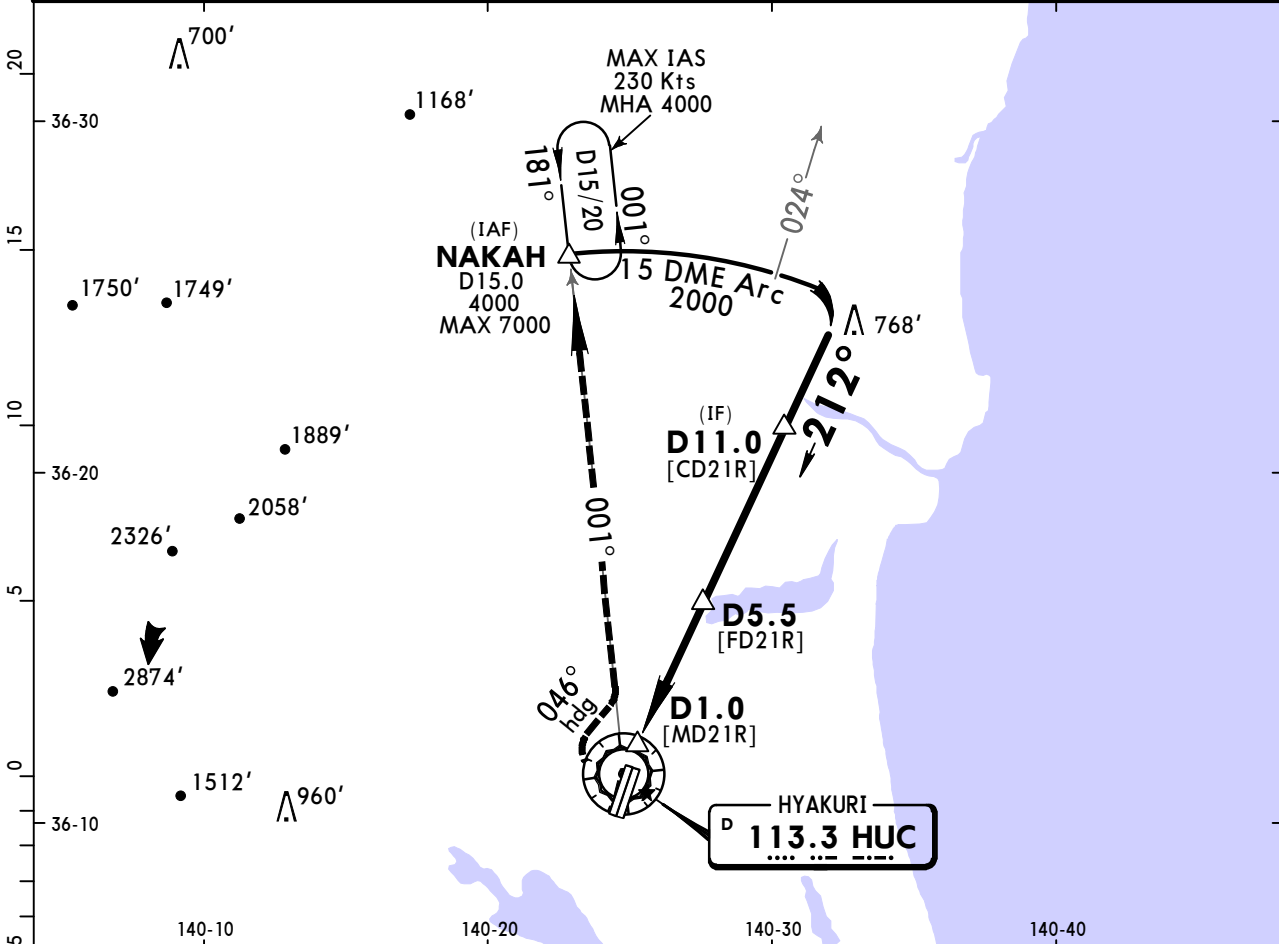
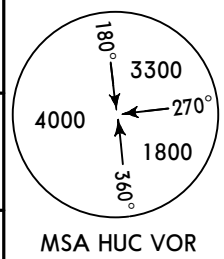
HYAKURI, JAPAN

HYAKURI

1 JUN 18 (13-4)

VOR Rwy 21R

HYAKURI Approach (R) 120.1 123.87		HYAKURI Tower 118.02 126.2		Ground 119.5 126.2	
VOR HUC 113.3	Final Apch Crs 212°	Minimum Alt Refer to Profile	MDA(H) 470' (363')	Apt Elev 107' Rwy 107'	
MISSED APCH: Turn RIGHT , climb on heading 046° to intercept and proceed outbound via HUC VOR R-001 to NAKAH and hold at 4000' . Contact HYAKURI APP . Timing not authorized for defining the MAP.					
Alt Set: IN (hPa on req) 1. DME required.		Trans level: FL 140		Trans alt: 14000'	



Gnd speed-Kts	70	90	100	120	140	160	PAPI-L	RT	↑ on 046° hdg via HUC R-001
Descent Angle 2.75°	340	438	486	584	681	778			
MAP at D1.0									

STRAIGHT-IN LANDING RWY 21R		CIRCLE-TO-LAND	
MDA(H) 470' (363')		Max Kts	MDA(H)
A	RVR 1500m	90	580' (473') -1600m
B	RVR 1800m	120	580' (473') -2400m
C	CMV 2000m	140	660' (553') -3200m
D		165	

RJAH

JEPPESEN

HYAKURI, JAPAN

HYAKURI AERO

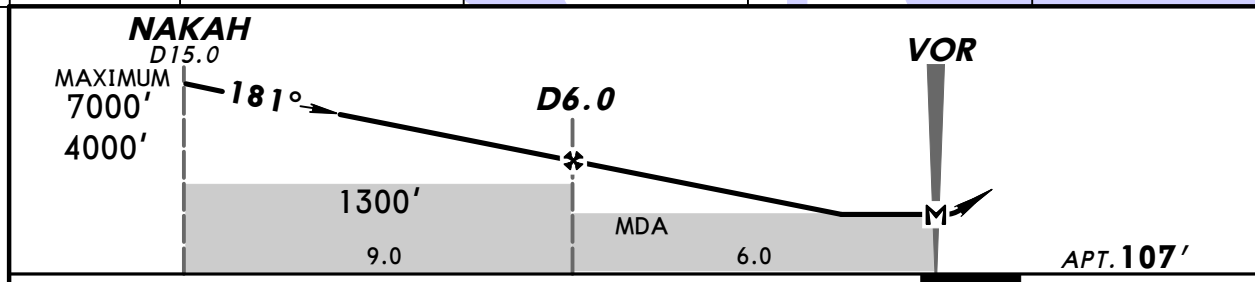
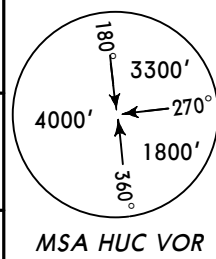
5 MAR 10

13-5

VOR-B

Eff 10 Mar 1500Z

HYAKURI Approach (R) 120.1 123.87		HYAKURI Tower 118.02 126.2		Ground 119.5 126.2	
VOR HUC * 113.3	Final Apch Crs 181°	Minimum Alt Refer to Profile	MDA(H) Refer to Minimums	Apt Elev 107'	
MISSED APCH: Turn RIGHT, climb heading 046° to intercept and proceed outbound via HUC VOR R-001 to NAKAH and hold at 4000'. Contact HYAKURI APP. Timing not authorized for defining the MAP.					
Alt Set: IN (hPa on req) 1. DME required.		Trans level: FL 140		Trans alt: 14000'	



Lighting - Refer to Airport Chart	RT	↑	046° hdg via *113.3 HUC R-001
MAP at VOR			

CIRCLE-TO-LAND	
Max Kts	MDA(H)
A 90	580' (473') - 1600m
B 120	580' (473') - 2400m
C 140	580' (473') - 2400m
D 165	660' (553') - 3200m

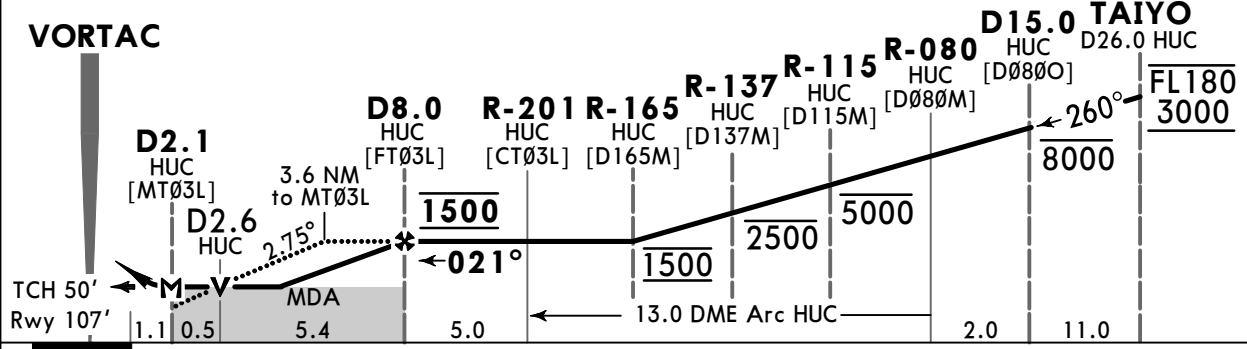
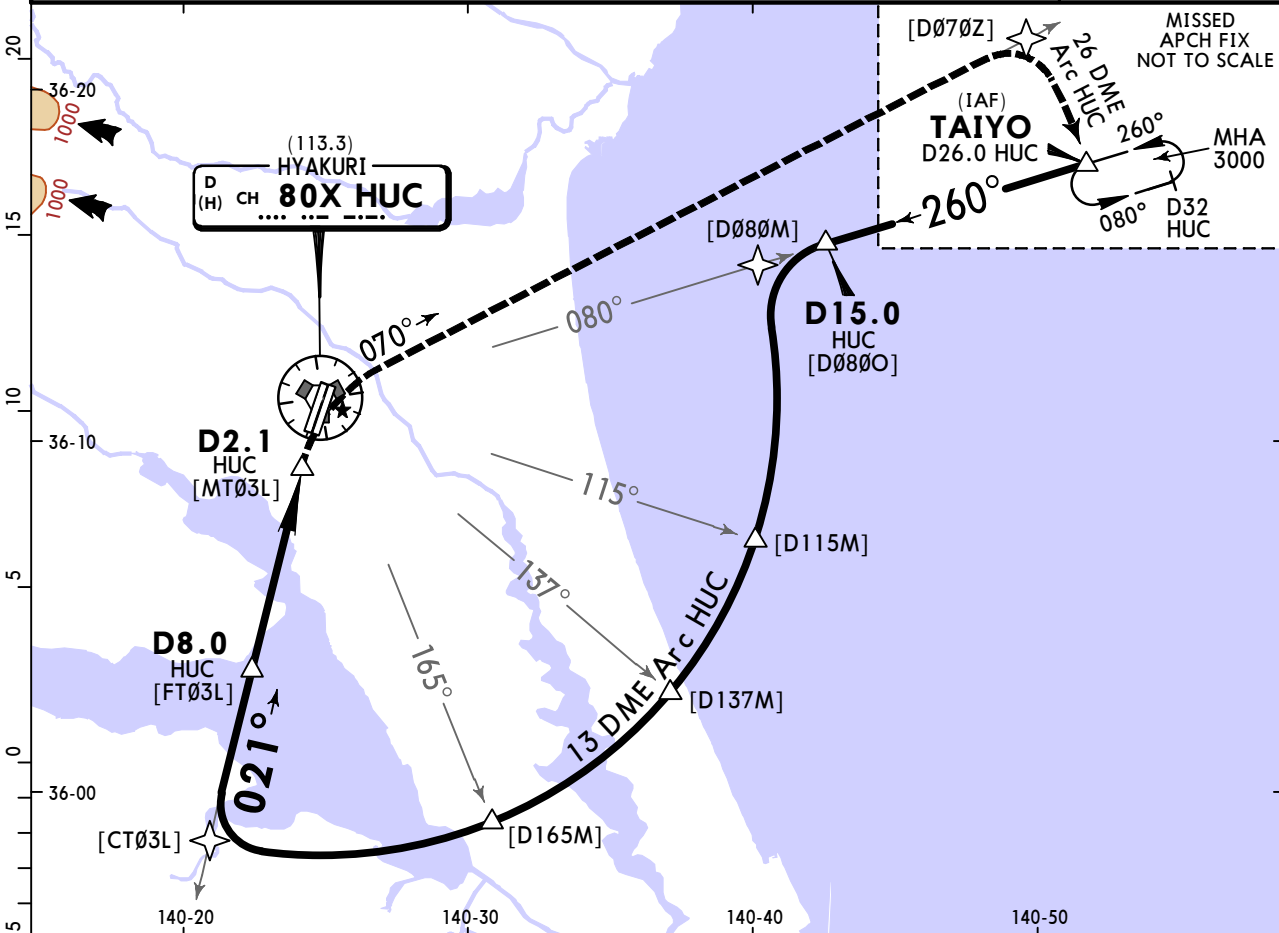
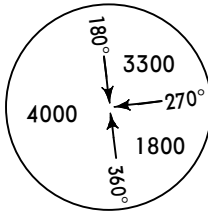
RJAH
HYAKURI



4 FEB 22 (14-1)

HYAKURI, JAPAN
TACAN Z Rwy 03L

		HYAKURI Approach (R)					
		120.1	123.875	261.2	305.7	362.3	
		HYAKURI Tower			Ground		
		118.025	126.2	236.8	323.8	119.5	126.2 247.8 275.8
BRIEFING STRIP™	TACAN HUC CH 80X (113.3)	Final Apch Crs 021°	D8.0 HUC 1500 (1393')	MDA(H) 540' (433')	Apt Elev 107' Rwy 107'		
	MISSED APCH: D2.1 HUC prior to HUC TACAN, RIGHT climbing turn to 3000' via HUC TACAN R-070, via D26.0 HUC clockwise ARC to TAIYO and hold. Contact Hyakuri APP.						
Alt Set: IN (hPa on req)		Trans level: FL140			Trans alt: 14000'		
EMERG SAFE ALT 100NM 14400'.							MSA HUC VORTAC



Gnd speed-Kts	70	90	100	120	140	160
Descent Angle 2.75°	340	438	486	584	681	778
MAP at D2.1 HUC						

SSALS **3000'** HUC via CH **80X** (113.3) **R-070**

PAPI **RT**

State	STRAIGHT-IN LANDING			CIRCLE-TO-LAND		
	MDA(H) 540' (433')					
NATL	ALS out			Max Kts	MDA(H)	
	A	R1400m	R1500m	90	580' (473')	V1600m
	B	R1500m	R1800m	120	660' (553')	V2400m
	C	R1600m	C2000m	140	660' (553')	V3200m
D	R1800m		165			

CHANGES: New procedure.

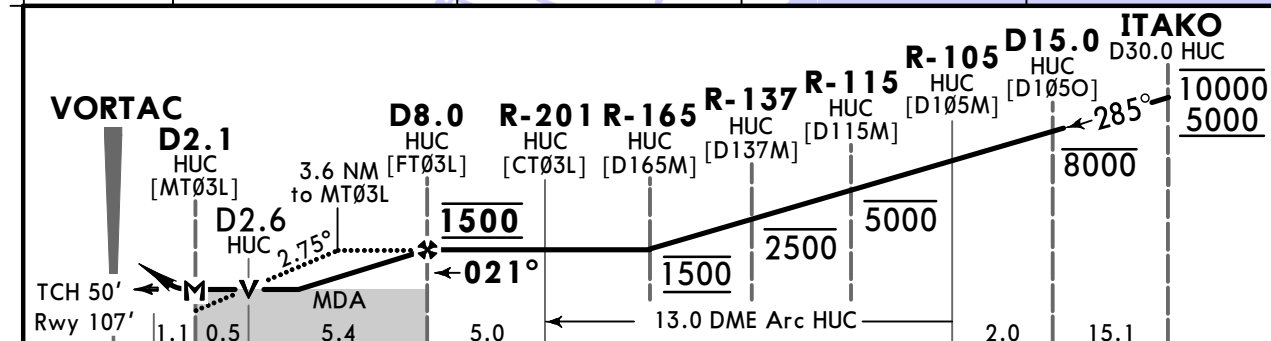
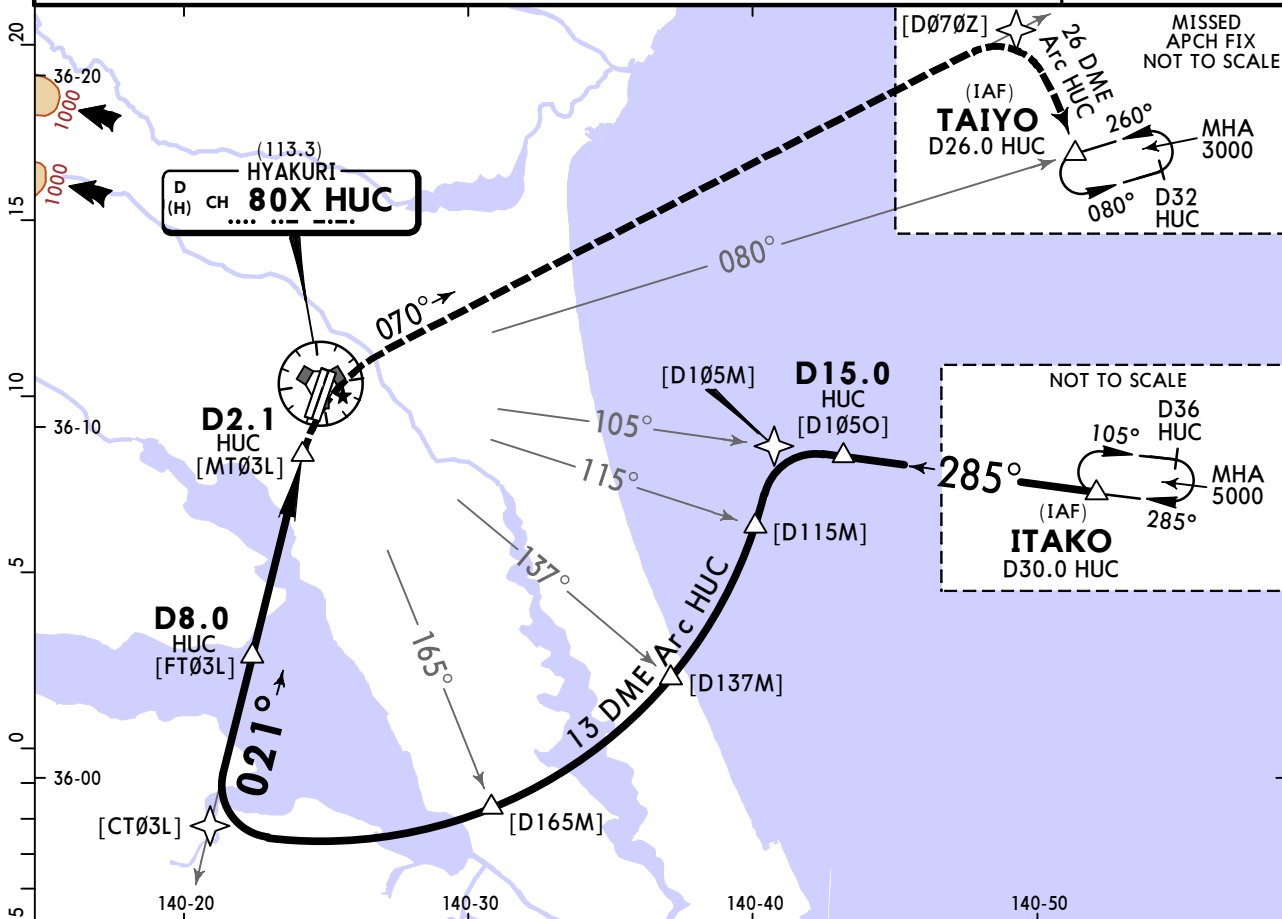
RJAH
HYAKURI



4 FEB 22 (14-2)

HYAKURI, JAPAN
TACAN Y Rwy 03L

		HYAKURI Approach (R)					
		120.1	123.875	261.2	305.7	362.3	
		HYAKURI Tower			Ground		
		118.025	126.2	236.8	323.8	119.5	126.2 247.8 275.8
BRIEFING STRIP™	TACAN HUC CH 80X (113.3)	Final Apch Crs 021°	D8.0 HUC 1500 (1393')		MDA(H) 540' (433')	Apt Elev 107' Rwy 107'	
	MISSED APCH: D2.1 HUC prior to HUC TACAN, RIGHT climbing turn to 3000' via HUC TACAN R-070, via D26.0 HUC clockwise ARC to TAIYO and hold. Contact Hyakuri APP.						
Alt Set: IN (hPa on req)		Trans level: FL140			Trans alt: 14000'		
EMERG SAFE ALT 100NM 14400'.						MSA HUC VORTAC	



Gnd speed-Kts	70	90	100	120	140	160	SSALS PAPI	RT	3000' via CH 80X (113.3) R-070
Descent Angle 2.75°	340	438	486	584	681	778			
MAP at D2.1 HUC									

State STRAIGHT-IN LANDING			CIRCLE-TO-LAND		
MDA(H) 540' (433')					
		ALS out	Max Kts	MDA(H)	
A	R1400m	R1500m	90	580' (473')	V1600m
B	R1500m	R1800m	120	660' (553')	V2400m
C	R1600m	C2000m	140	660' (553')	V3200m
D	R1800m		165		

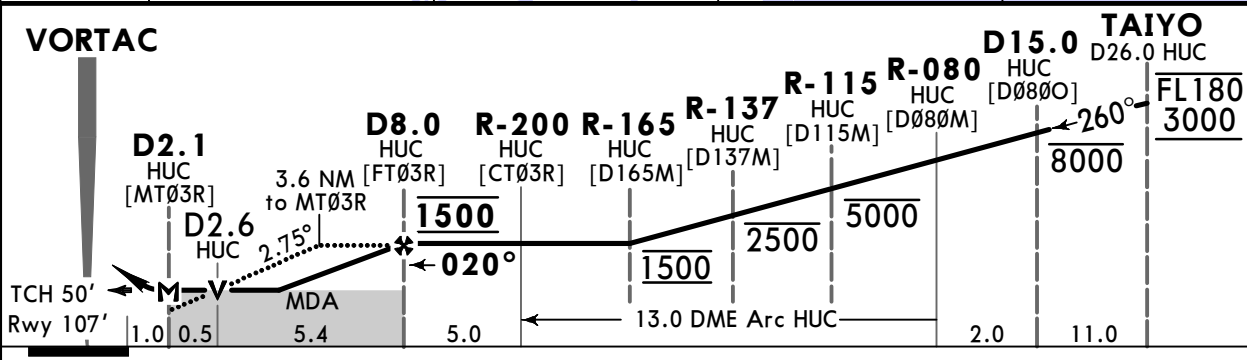
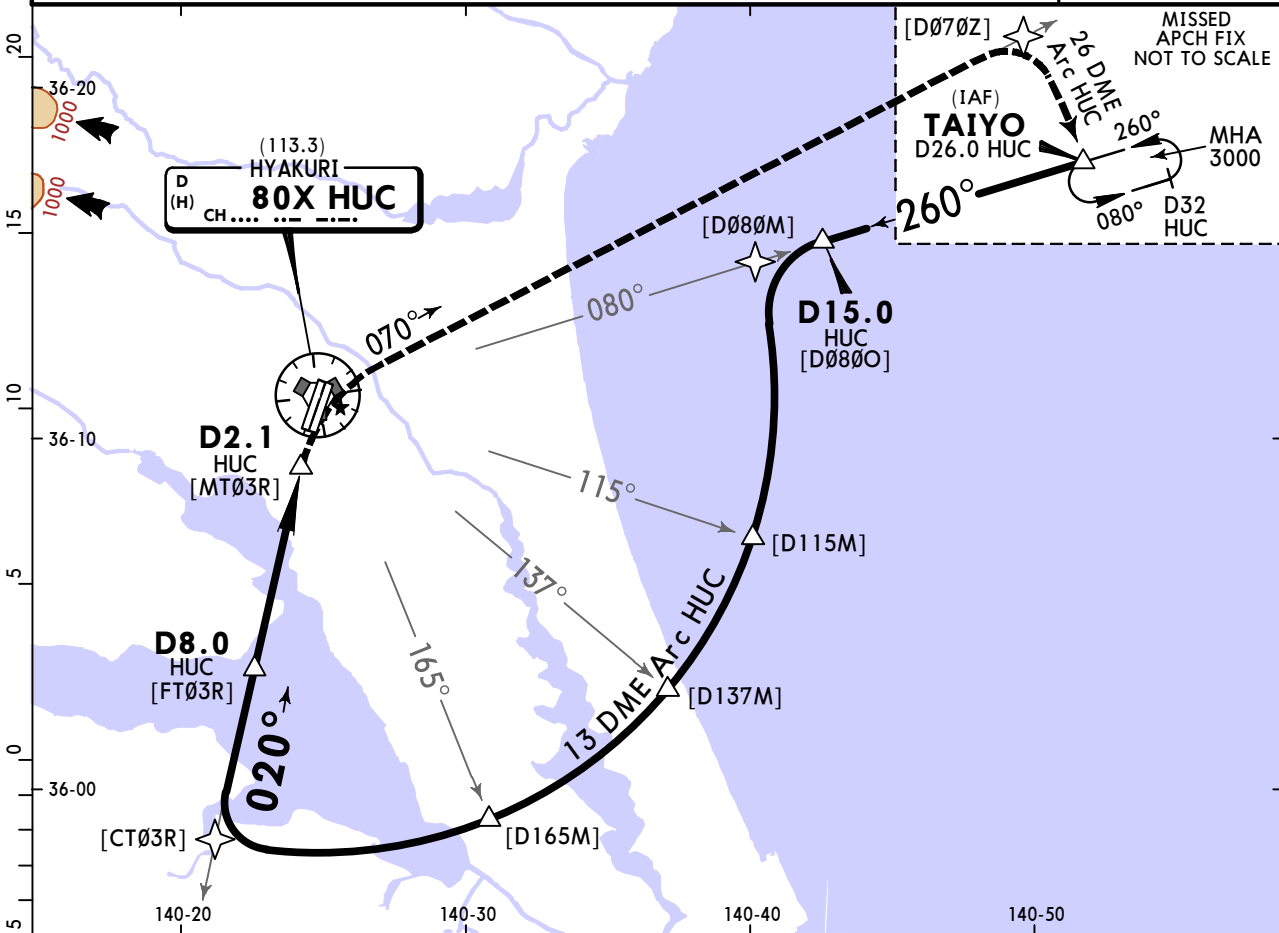
RJAH
HYAKURI



4 FEB 22 (14-3)

HYAKURI, JAPAN
TACAN Z Rwy 03R

		HYAKURI Approach (R)					
		120.1	123.875	261.2	305.7	362.3	
HYAKURI Tower				Ground			
		118.025	126.2	236.8	323.8	119.5	126.2 247.8 275.8
TACAN HUC CH 80X (113.3)	Final Apch Crs 020°	D8.0 HUC 1500 (1393')		MDA(H) 540' (433')	Apt Elev 107' Rwy 107'		
MISSED APCH: D2.1 HUC prior to HUC TACAN, RIGHT climbing turn to 3000' via HUC TACAN R-070, via D26.0 HUC clockwise ARC to TAIYO and hold. Contact Hyakuri APP.							
Alt Set: IN (hPa on req)		Trans level: FL140			Trans alt: 14000'		
EMERG SAFE ALT 100NM 14400'.							
							MSA HUC VORTAC



Gnd speed-Kts	70	90	100	120	140	160
Descent Angle 2.75°	340	438	486	584	681	778
MAP at D2.1 HUC						

ALSIF-I
PAPI
RT
3000' HUC CH 80X (113.3) R-070

State		STRAIGHT-IN LANDING	
		MDA(H) 540' (433')	
		ALS out	
A	R1000m	R1500m	Max Kts 90
B	R1200m	R1800m	120
C	R1600m	C2000m	140
D	R1600m	C2000m	165

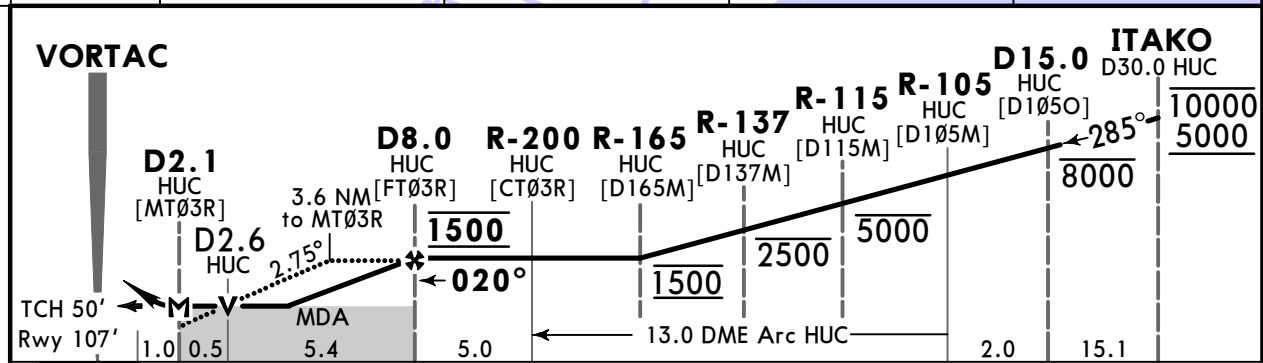
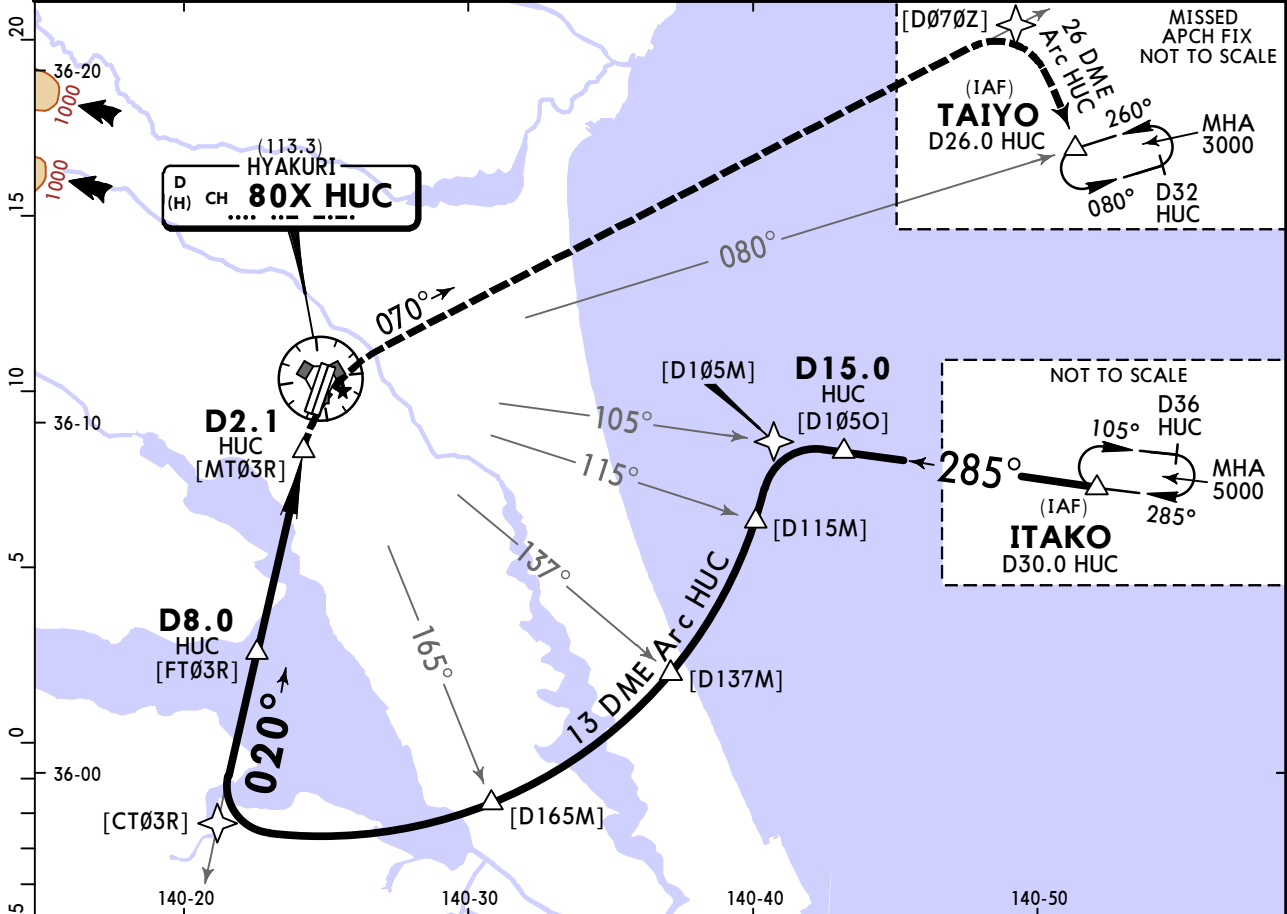
CIRCLE-TO-LAND	
MDA(H)	
580' (473')	V1600m
660' (553')	V2400m
660' (553')	V3200m

RJAH
HYAKURI

JEPPESEN
4 FEB 22 **(14-4)**

HYAKURI, JAPAN
TACAN Y Rwy 03R

HYAKURI Approach (R)															
120.1		123.875		261.2		305.7		362.3							
HYAKURI Tower					Ground										
118.025		126.2		236.8		323.8		119.5		126.2		247.8		275.8	
TACAN HUC CH 80X (113.3)		Final Apch Crs 020°		D8.0 HUC 1500 (1393')		MDA(H) 540' (433')		Apt Elev 107'		Rwy 107'					
MISSED APCH: D2.1 HUC prior to HUC TACAN, RIGHT climbing turn to 3000' via HUC TACAN R-070, via D26.0 HUC clockwise ARC to TAIYO and hold. Contact Hyakuri APP.															
Alt Set: IN (hPa on req)				Trans level: FL140				Trans alt: 14000'							
EMERG SAFE ALT 100NM 14400'.										MSA HUC VORTAC					



Gnd speed-Kts	70	90	100	120	140	160	ALSIF-I	PAPI	RT	3000'	via CH 80X (113.3)	R-070
Descent Angle	2.75°	340	438	486	584	778						
MAP at D2.1 HUC												

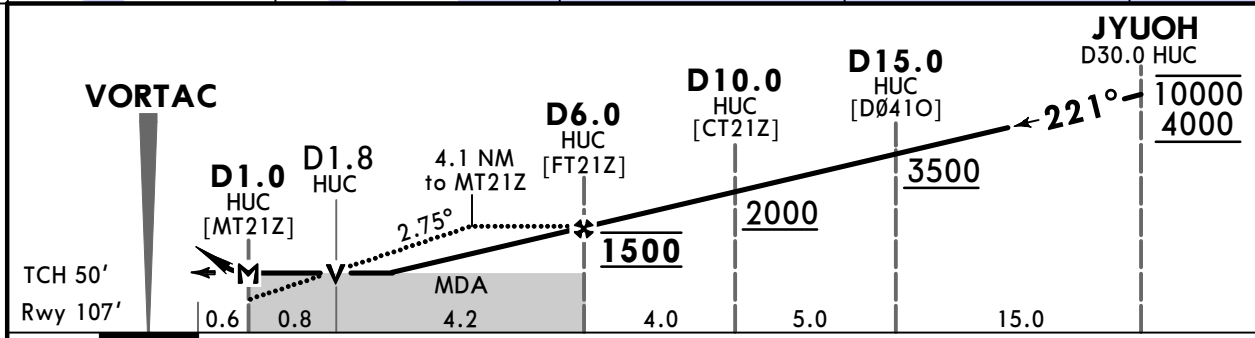
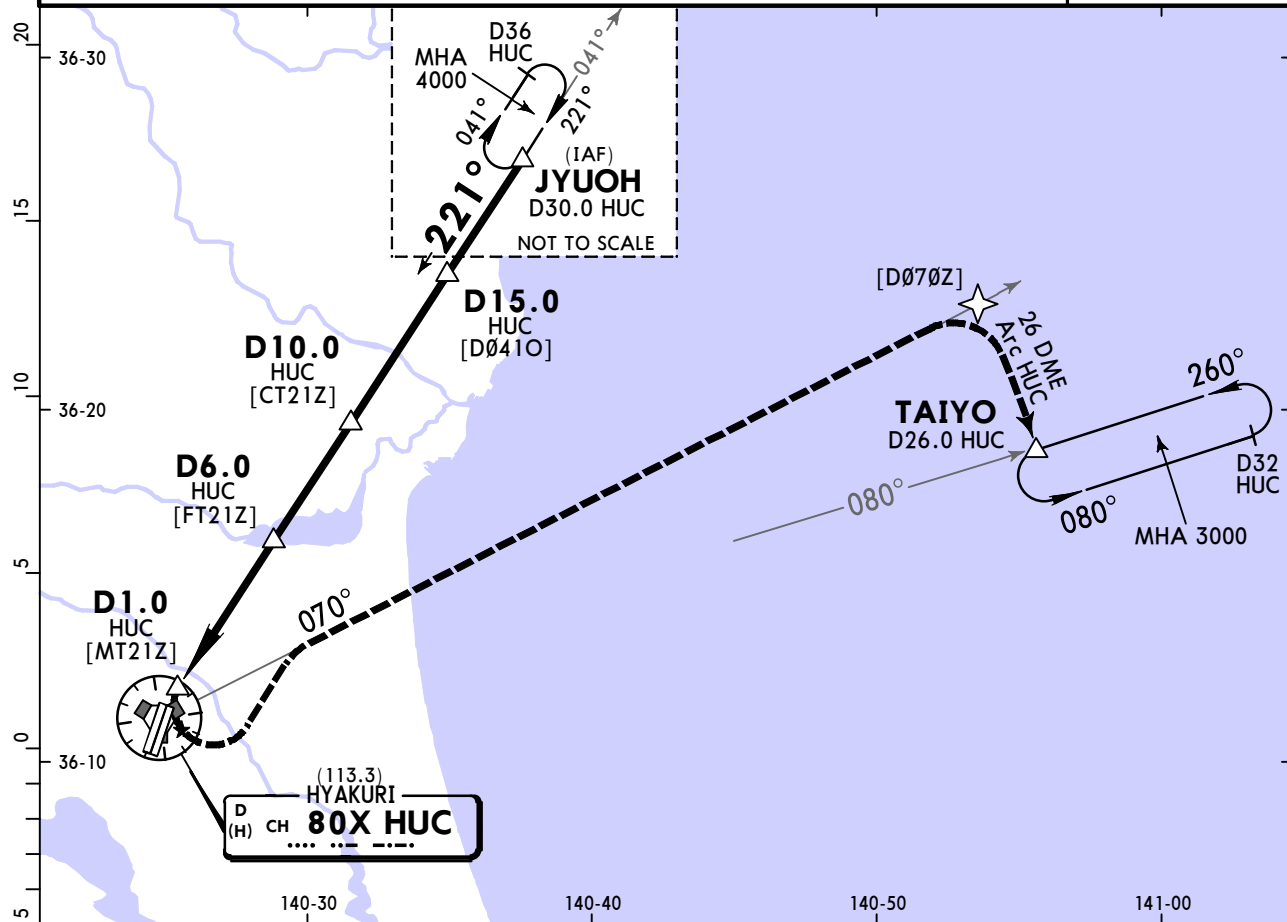
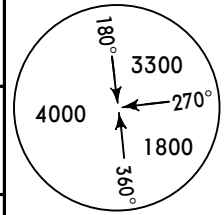
State	STRAIGHT-IN LANDING				CIRCLE-TO-LAND			
	MDA(H) 540' (433')							
NATL	ALS out			Max Kts	MDA(H)			
	A	R1000m	R1500m	90	580'	(473')	V1600m	
	B	R1200m	R1800m	120	660'	(553')	V2400m	
	C	R1600m	C2000m	140	660'	(553')	V3200m	
	D	R1600m		165	660'	(553')	V3200m	

RJAH
HYAKURI

JEPPESSEN
4 FEB 22 (14-5)

HYAKURI, JAPAN
TACAN Z Rwy 21L

		HYAKURI Approach (R)					
		120.1	123.875	261.2	305.7	362.3	
		HYAKURI Tower			Ground		
		118.025	126.2	236.8	323.8	119.5	126.2 247.8 275.8
BRIEFING STRIP™	TACAN HUC CH 80X (113.3)	Final Apch Crs 221°	D6.0 HUC 1500 (1393')	MDA(H) 500' (393')	Apt Elev 107' Rwy 107'		
	MISSED APCH: D1.0 HUC prior to HUC TACAN, LEFT climbing turn to 3000' via HUC TACAN R-070, via D26.0 HUC clockwise ARC to TAIYO and hold. Contact Hyakuri APP.						
Alt Set: IN (hPa on req)		Trans level: FL140		Trans alt: 14000'			
EMERG SAFE ALT 100NM 14400'.							MSA HUC VORTAC



Gnd speed-Kts	70	90	100	120	140	160
Descent Angle 2.75°	340	438	486	584	681	778
MAP at D1.0 HUC						

ALSIF-I
PAPI
LT
3000' HUC CH 80X (113.3) R-070

State	STRAIGHT-IN LANDING		CIRCLE-TO-LAND	
	MDA(H) 500' (393')			
NATL		ALS out	Max Kts	MDA(H)
	A	R900m	90	580' (473') V1600m
	B	R1000m	120	660' (553') V2400m
	C	R1400m	140	660' (553') V3200m
	D	C2000m	165	

CHANGES: New procedure.

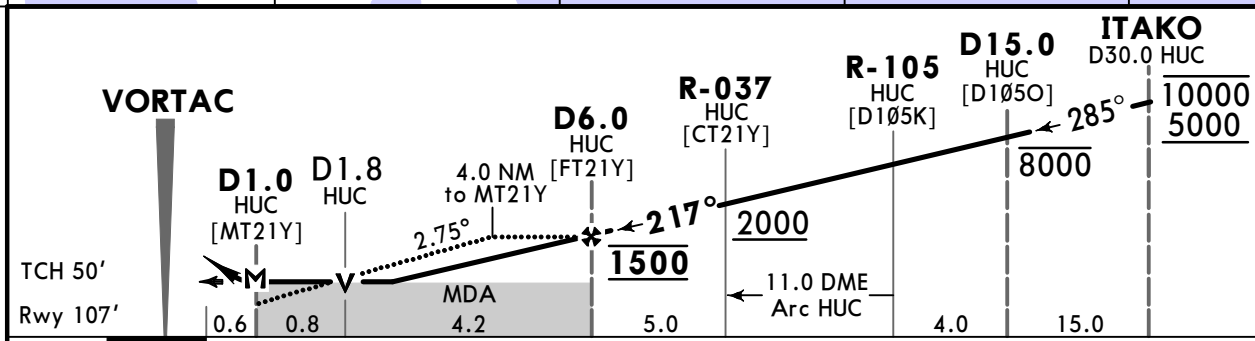
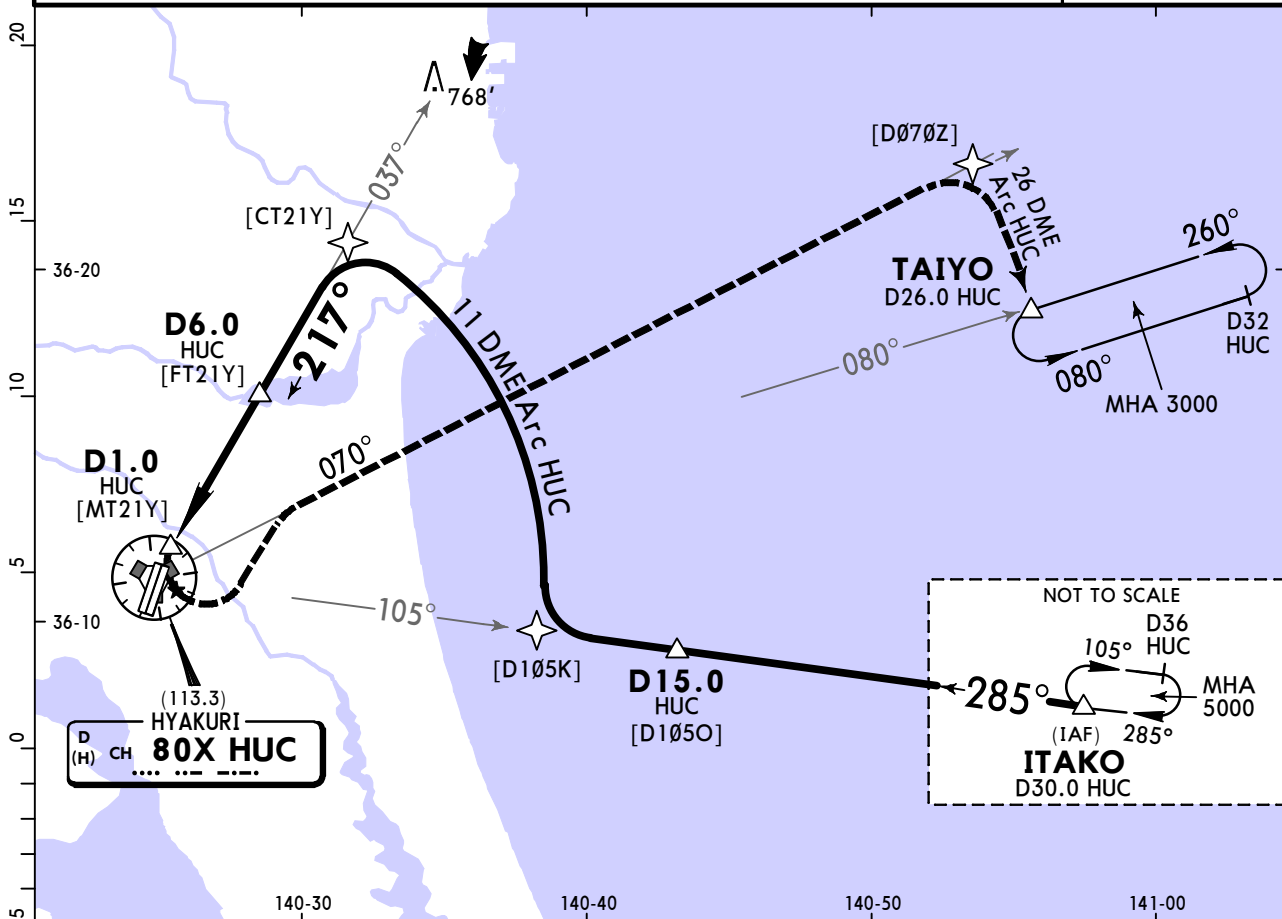
RJAH
HYAKURI

JEPPESSEN

4 FEB 22 (14-6)

HYAKURI, JAPAN
TACAN Y Rwy 21L

HYAKURI Approach (R)																	
120.1				123.875		261.2		305.7		362.3							
HYAKURI Tower						Ground											
118.025				126.2		236.8		323.8		119.5		126.2		247.8		275.8	
TACAN HUC CH 80X (113.3)		Final Apch Crs 217°		D6.0 HUC 1500 (1393')		MDA(H) 500' (393')		Apt Elev 107' Rwy 107'									
MISSED APCH: D1.0 HUC prior to HUC TACAN, LEFT climbing turn to 3000' via HUC TACAN R-070, via D26.0 HUC clockwise ARC to TAIYO and hold. Contact Hyakuri APP.																	
Alt Set: IN (hPa on req)				Trans level: FL140				Trans alt: 14000'									
EMERG SAFE ALT 100NM 14400'.												MSA HUC VORTAC					



Gnd speed-Kts	70	90	100	120	140	160			3000' via R-070	HUC CH 80X (113.3)
Descent Angle	2.75°	340	438	486	584	681				
MAP at D1.0 HUC										

NATL	State			STRAIGHT-IN LANDING			CIRCLE-TO-LAND			
	MDA(H) 500' (393')									
				ALS out			Max Kts			
	A	R900m		R1500m			90	580' (473') V1600m		
	B	R1000m		R1800m			120	660' (553') V2400m		
C	R1400m		C2000m			140	660' (553') V3200m			
D	R1400m		C2000m			165	660' (553') V3200m			

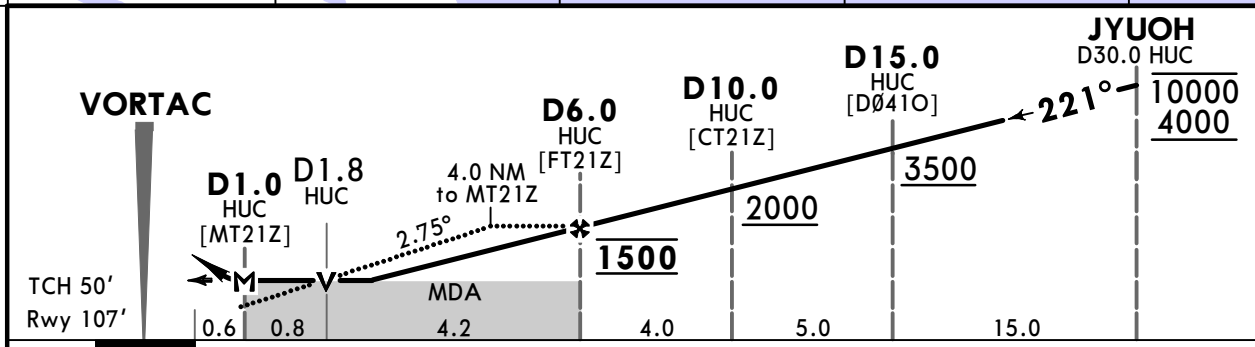
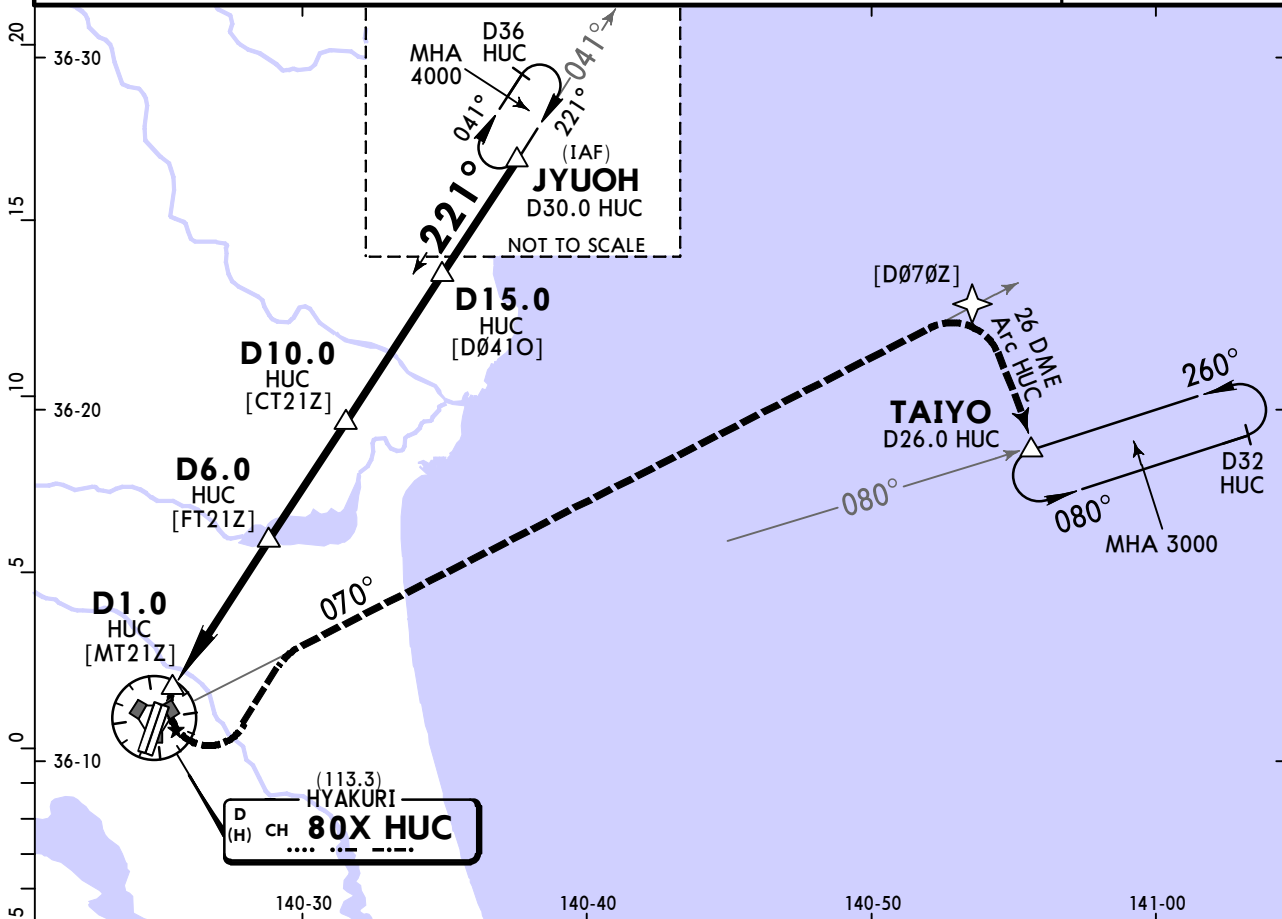
RJAH
HYAKURI



4 FEB 22 (14-7)

HYAKURI, JAPAN
TACAN Z Rwy 21R

		HYAKURI Approach (R)					
		120.1	123.875	261.2	305.7	362.3	
HYAKURI Tower				Ground			
		118.025	126.2	236.8	323.8	119.5	126.2 247.8 275.8
TACAN HUC CH 80X (113.3)	Final Apch Crs 221°	D6.0 HUC 1500 (1393')		MDA(H) 500' (393')	Apt Elev 107' Rwy 107'		
MISSED APCH: D1.0 HUC prior to HUC TACAN, LEFT climbing turn to 3000' via HUC TACAN R-070, via D26.0 HUC clockwise ARC to TAIYO and hold. Contact Hyakuri APP.							
Alt Set: IN (hPa on req)		Trans level: FL140			Trans alt: 14000'		
EMERG SAFE ALT 100NM 14400'.							
							MSA HUC VORTAC



Gnd speed-Kts	70	90	100	120	140	160			
Descent Angle	2.75°	340	438	486	584	681	778		
MAP at D1.0 HUC									

State		STRAIGHT-IN LANDING		CIRCLE-TO-LAND	
		MDA(H) 500' (393')		Max Kts. MDA(H)	
A		R1500m		90	580' (473') V1600m
B		R1800m		120	660' (553') V2400m
C		C2000m		140	660' (553') V3200m
D				165	

CHANGES: New procedure.

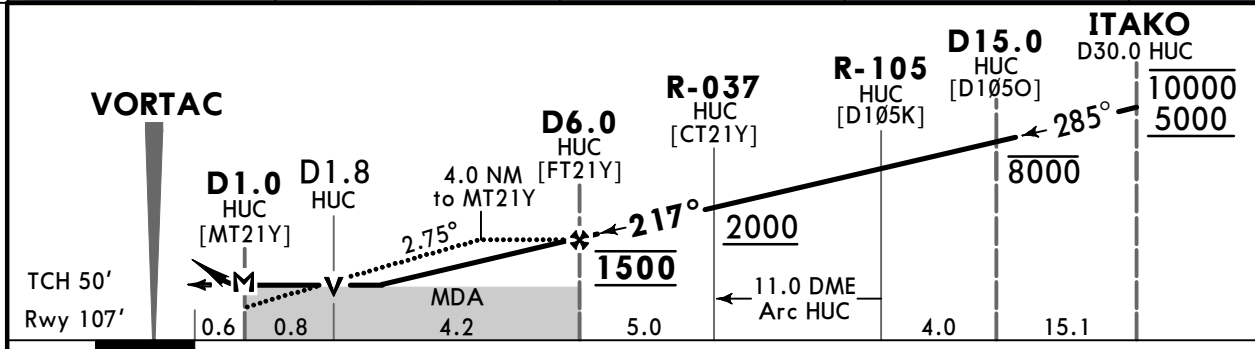
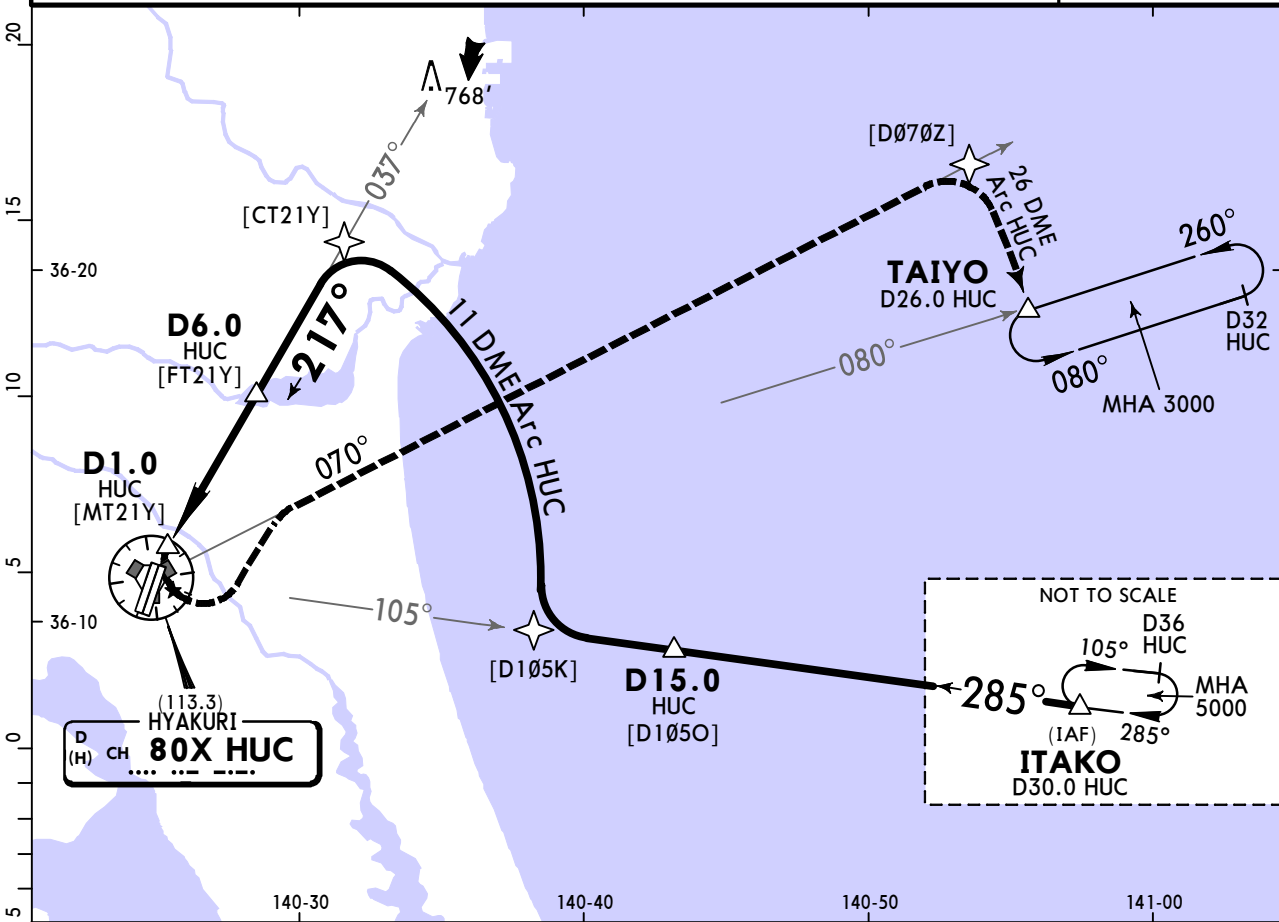
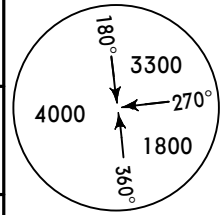
RJAH
HYAKURI



4 FEB 22 (14-8)

HYAKURI, JAPAN
TACAN Y Rwy 21R

		HYAKURI Approach (R)					
		120.1	123.875	261.2	305.7	362.3	
		HYAKURI Tower			Ground		
		118.025	126.2	236.8	323.8	119.5	126.2 247.8 275.8
BRIEFING STRIP™	TACAN HUC CH 80X (113.3)	Final Apch Crs 217°		D6.0 HUC 1500 (1393')	MDA(H) 500' (393')	Apt Elev 107' Rwy 107'	
	MISSED APCH: D1.0 HUC prior to HUC TACAN, LEFT climbing turn to 3000' via HUC TACAN R-070, via D26.0 HUC clockwise ARC to TAIYO and hold. Contact Hyakuri APP.						
Alt Set: IN (hPa on req)		Trans level: FL140			Trans alt: 14000'		
EMERG SAFE ALT 100NM 14400'.							MSA HUC VORTAC



Gnd speed-Kts	70	90	100	120	140	160			
Descent Angle	2.75°	340	438	486	584	681	778		
MAP at D1.0 HUC									

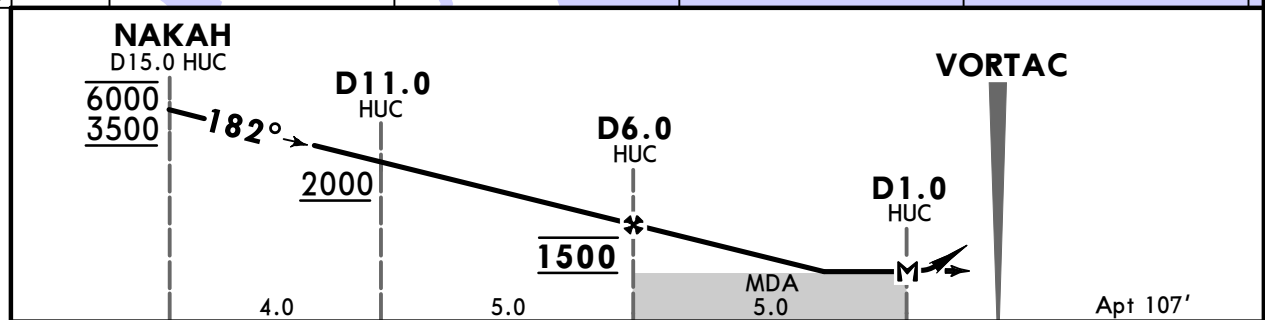
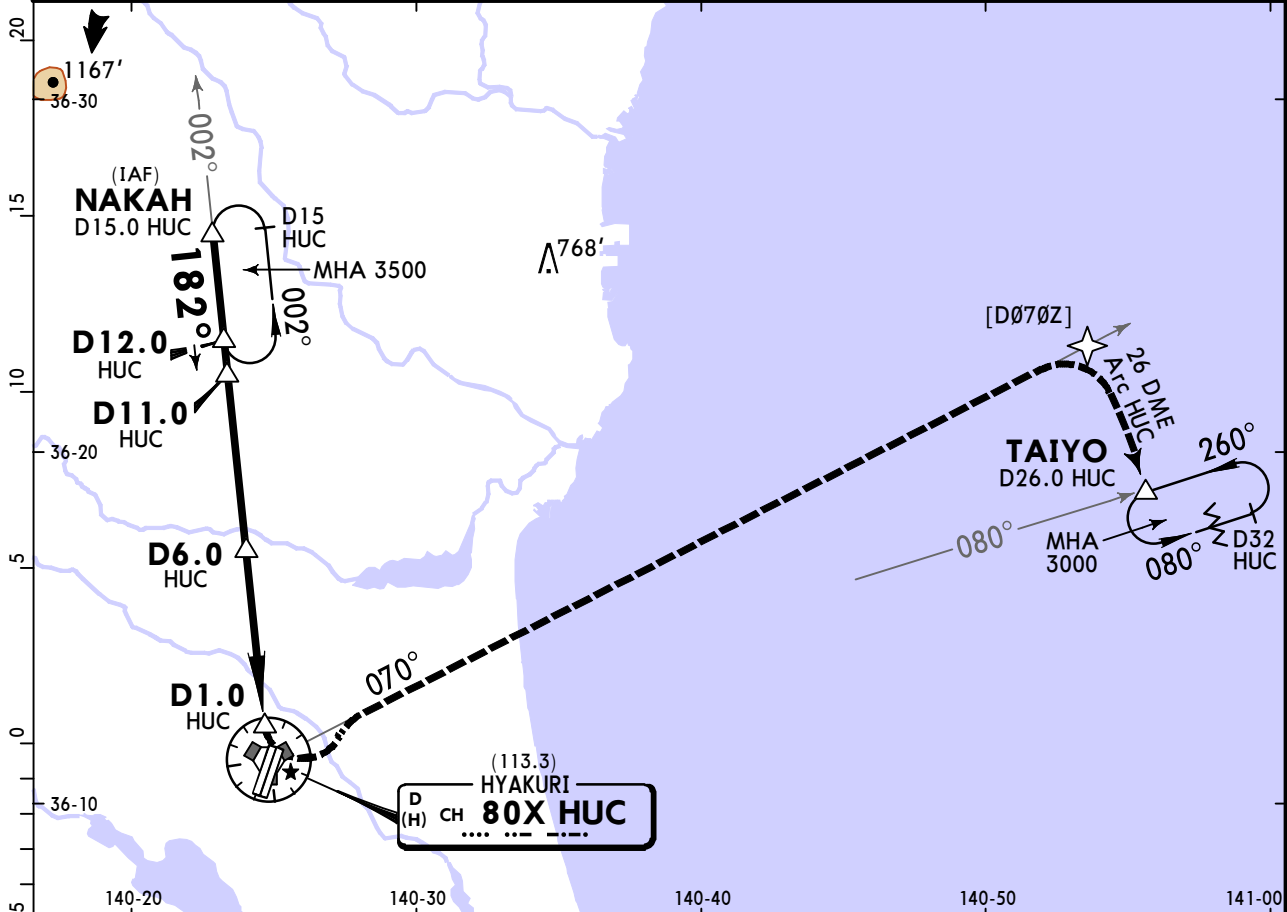
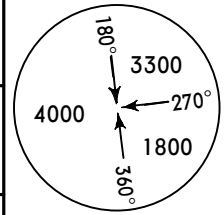
State		STRAIGHT-IN LANDING		CIRCLE-TO-LAND	
		MDA(H) 500' (393')		Max Kts. MDA(H)	
A		R1500m		90	580' (473') V1600m
B				120	
C		R1800m		140	660' (553') V2400m
D		C2000m		165	660' (553') V3200m

RJAH
HYAKURI

JEPPESSEN
4 FEB 22 **14-9**

HYAKURI, JAPAN
TACAN A

120.1		123.875		HYAKURI Approach (R)		261.2		305.7		362.3	
HYAKURI Tower						Ground					
118.025		126.2		236.8		323.8		119.5		126.2 247.8 275.8	
TACAN HUC CH 80X (113.3)		Final Apch Crs 182°		D6.0 HUC 1500 (1393')		MDA(H) Refer to Minimums		Apt Elev 107'			
MISSED APCH: D1.0 HUC prior to HUC TACAN, LEFT climbing turn to 3000' via HUC TACAN R-070, via D26.0 HUC clockwise ARC to TAIYO and hold. Contact Hyakuri APP.											
Alt Set: IN (hPa on req)				Trans level: FL140				Trans alt: 14000'			
EMERG SAFE ALT 100NM 14400'.										MSA HUC VORTAC	



Lighting - Refer to Airport Chart	LT	3000'	HUC CH 80X (113.3)
MAP at D1.0 HUC		↑	R-070

State		CIRCLE-TO-LAND	
	Max Kts	MDA(H)	
A	90	580' (473')	V1600m
B	120	660' (553')	V2400m
C	140	660' (553')	V3200m
D	165	660' (553')	V3200m

RJAH



HYAKURI, JAPAN

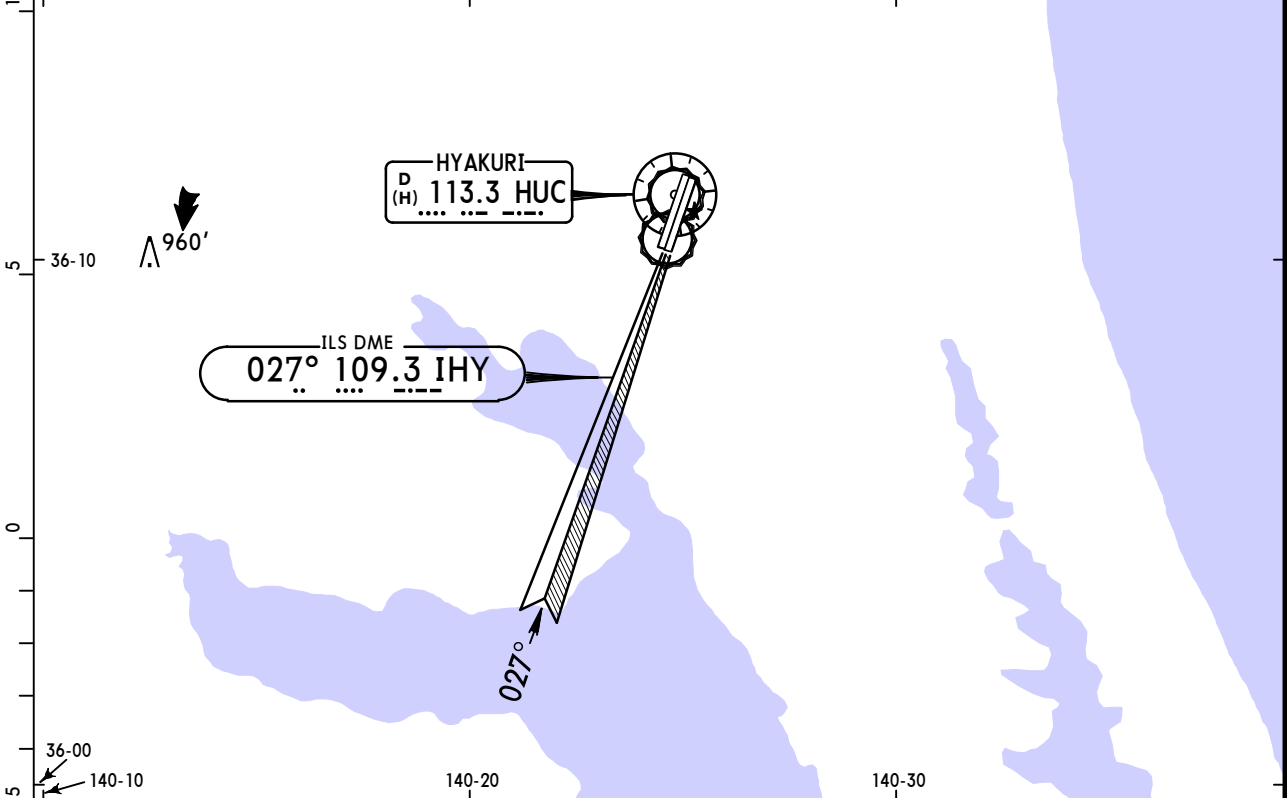
HYAKURI

29 MAY 20

(18-1)

**RADAR PAR Rws 03R & 21L
ASR ALL Rws**

BRIEFING STRIP™	HYAKURI Approach (R) 120.1 123.87		HYAKURI Tower 118.02 126.2		Ground 119.5 126.2	
	RADAR	Final Apch Crs By ATC	Minimum Alt No FAF	Refer to Minimums	Apt Elev 107' All Rws 107'	
	MISSED APCH: As directed by RADAR CONTROLLER.					
Alt Set: IN (hPa on req)		Trans level: FL 140		Trans alt: 14000'		MSA HUC VOR



ALL RWYS 107'

Gnd speed-Kts	70	90	100	120	140	160	Lighting - Refer to Airport Chart
RWY 03R PAR GS 2.75°	346	444	494	593	691	790	

STRAIGHT-IN LANDING					
PAR 03R DA(H) 307' (200')		PAR 21L DA(H) 307' (200')		ASR 03L MDA(H) 520' (413')	
ALS out		ALS out		ALS out	
A				RVR 1200m	RVR 1500m
B				RVR 1300m	
C	RVR 750m	RVR 1000m	RVR 750m	RVR 1400m	RVR 1800m
D				RVR 1600m	CMV 2000m

STRAIGHT-IN LANDING					CIRCLE-TO-LAND		
ASR 03R MDA(H) 520' (413')		ASR 21L MDA(H) 500' (393')		ASR 21R MDA(H) 500' (393')		Max Kts 90 120 140 165	
ALS out		ALS out		ALS out			
A	RVR 900m	RVR 1500m	RVR 900m	RVR 1500m	RVR 1500m		580' (473') -1600m
B							
C	RVR 1000m	RVR 1800m	RVR 1000m	RVR 1800m	RVR 1800m		660' (553') -2400m
D	RVR 1400m	CMV 2000m	RVR 1400m	CMV 2000m	CMV 2000m	660' (553') -3200m	

CHANGES: CMV 1400 change to RVR.

Chart changes since cycle 15-2023

ADD = added chart, REV = revised chart, DEL = deleted chart.

ACT	PROCEDURE IDENT	INDEX	REV DATE	EFF DATE
HYAKURI, (HYAKURI - RJA)				

TERMINAL CHART CHANGE NOTICES

Chart Change Notices for Airport RJAH

Type: Terminal

Effectivity: Permanent

Begin Date: Immediately

End Date: No end date

IATA code for Hyakuri Airport should be read as IBR.