

List of pages in this Trip Kit

Trip Kit Index

Airport Information For RJAZ

Terminal Charts For RJAZ

Revision Letter For Cycle 16-2023

Change Notices

Notebook

General Information

Location: KOZUSHIMA JPN
ICAO: RJAZ
Lat/Long: N34° 11.37', E139° 08.02'
Elevation: 454 ft

Airport Use: Public
Daylight Savings: Not Observed
UTC Conversion: -9:00 = UTC
Magnetic Variation: 7.0° W

Fuel Types: Jet A-1
Customs: Yes
Airport Type: IFR
Landing Fee: Yes
Control Tower: No
Jet Start Unit: No
LLWS Alert: No
Beacon: No

Sunrise: 2115 Z
Sunset: 0741 Z

Runway Information

Runway: 11
Length x Width: 2625 ft x 82 ft
Surface Type: asphalt
TDZ-Elev: 437 ft
Lighting: REIL
Stopway: 131 ft

Runway: 29
Length x Width: 2625 ft x 82 ft
Surface Type: asphalt
TDZ-Elev: 471 ft
Lighting: REIL
Stopway: 131 ft

Communication Information

Izu (Kozushima) Radio: 124.300 AFIS Remote Communications Air-Ground
Tokyo Control ACC: 133.350 RCO
Tokyo Control ACC: 133.700 RCO

RJAZ
KOZUSHIMA



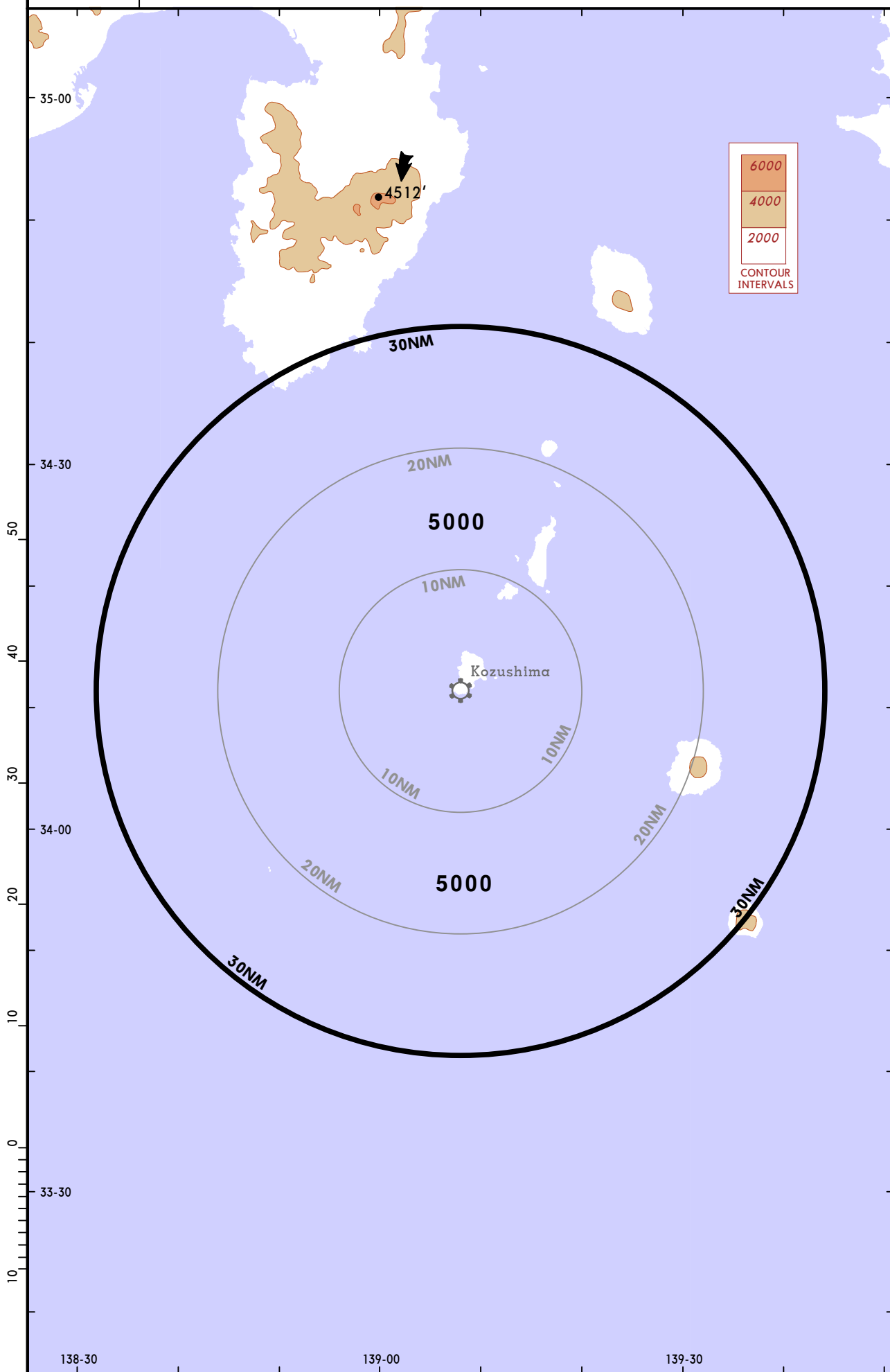
10 OCT 14 (10-1R)

KOZUSHIMA, JAPAN

RADAR MINIMUM ALTITUDES

Apt Elev
454'

Alt Set: IN (hPa on req)
Trans level: FL140 Trans alt: 14000'



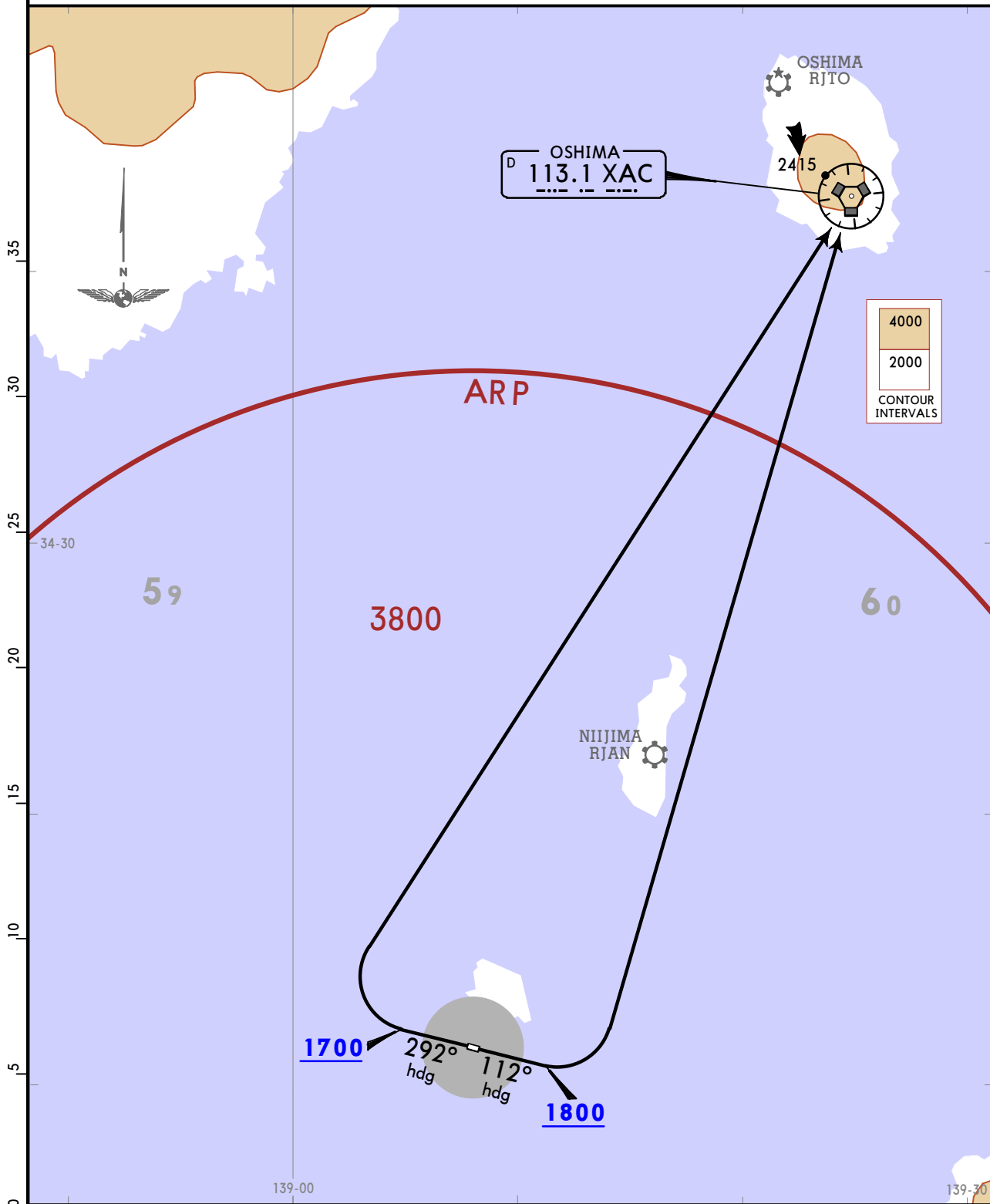
RJAZ
KOZUSHIMA

JEPPESSEN
12 JUL 19 **10-3** Eff 17 Jul 1500Z

KOZUSHIMA, JAPAN
RNAV SID

| | |
|------------------------|--|
| Apt Elev 454 | Trans alt: 14000 1. Basic RNP 1. 2. GNSS required. |
|------------------------|--|

KOZU 1 DEPARTURE [KOZU1]



OBSTACLES

RWY 11: 1903 located 1.9 NM 042° from end of RWY 11.
RWY 29: 1969 located 2.1 NM 041° from end of RWY 29.

RWY 11: 5.0% climb gradient required up to 2100.
RWY 29: 5.0% climb gradient required up to 2200.

| | | | | | | |
|----------------|-----|-----|-----|------|------|------|
| Gnd speed-KT | 75 | 100 | 150 | 200 | 250 | 300 |
| 5.0% V/V (fpm) | 380 | 506 | 760 | 1013 | 1266 | 1519 |

RWY

INITIAL CLIMB

11

Climb on heading 112° at or above 1800, turn LEFT DIRECT to XAC VOR.

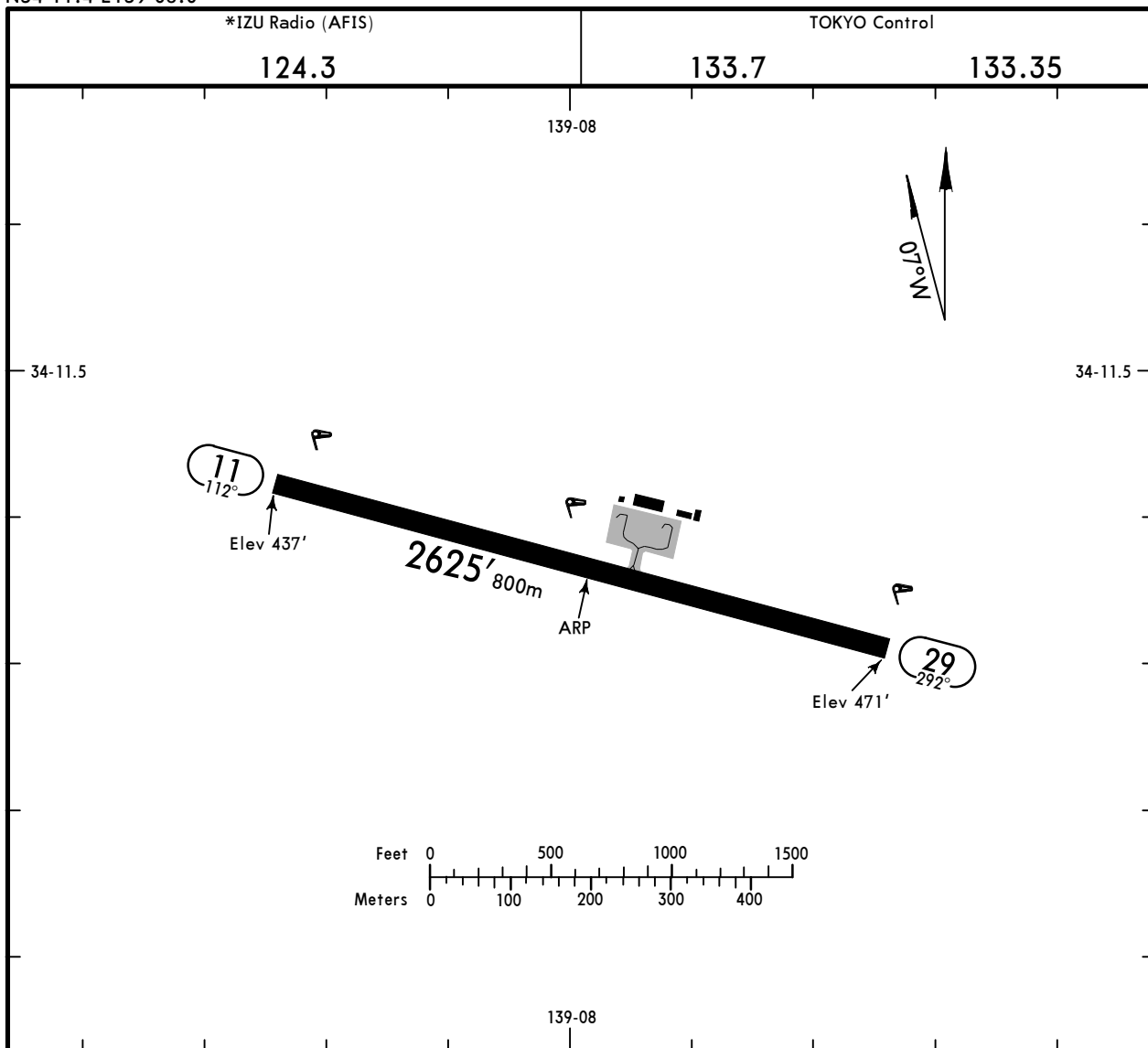
29

Climb on heading 292° at or above 1700, turn RIGHT DIRECT to XAC VOR.

RJAZ
 Apt Elev **454'**
 N34 11.4 E139 08.0

JEPPESEN
 15 OCT 21 **(10-9)**

KOZUSHIMA, JAPAN
KOZUSHIMA



ADDITIONAL RUNWAY INFORMATION

| RWY | REIL | PAPI-L (angle 3.0°) | grooved | USABLE LENGTHS | | TAKE-OFF | WIDTH |
|----------|------|---------------------|---------|----------------|-------------|----------|------------|
| | | | | Threshold | Glide Slope | | |
| 11 29 | | | | | | | 82' 25m |

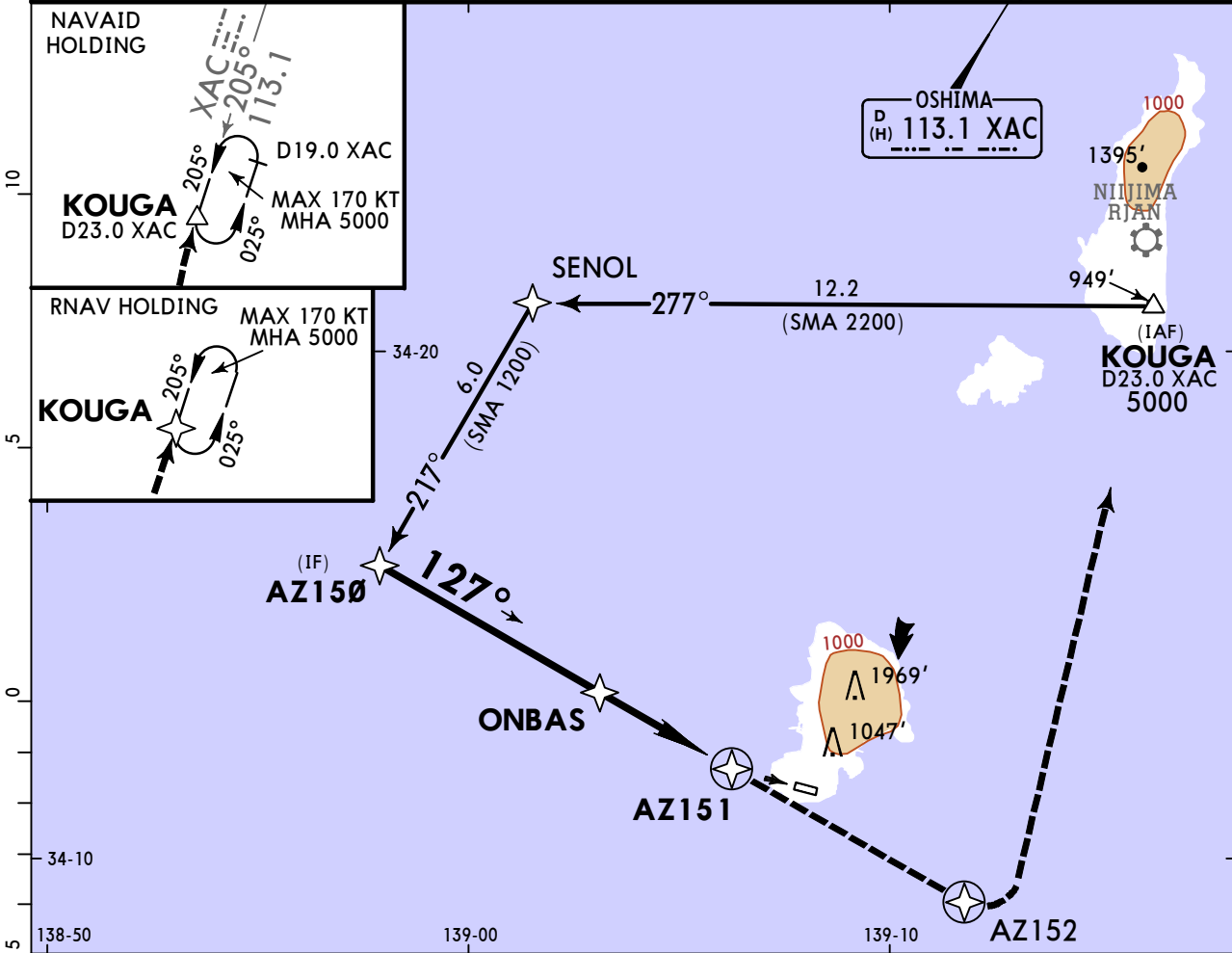
| State | TAKE-OFF | | | |
|-------|-------------------------------|----------------|----------------------------------|----------------------------|
| | Rwy 11 | | | |
| | Multi Eng Acft | | | Single Eng Acft |
| | With Take-off Altn Apt. Filed | | Without Take-off Altn Apt. Filed | |
| | RL or CL or RCLM | NIL (DAY ONLY) | | |
| A | 200' - V2400m | | Available Landing Minimums | Available Landing Minimums |
| B | | | | |
| C | NA | | NA | NA |
| D | NA | | NA | NA |
| | Rwy 29 | | | |
| | Multi Eng Acft | | | Single Eng Acft |
| | With Take-off Altn Apt. Filed | | Without Take-off Altn Apt. Filed | |
| | RL or CL or RCLM | NIL (DAY ONLY) | | |
| A | V400m | | Available Landing Minimums | Available Landing Minimums |
| B | V500m | | | |
| C | NA | | NA | NA |
| D | NA | | NA | NA |

RJAZ
KOZUSHIMA

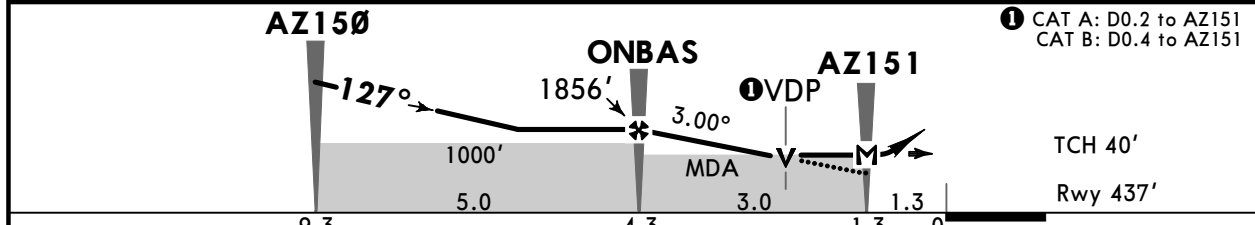
JEPESEN MISSED APCH CLIMB GRADIENT MIN 5.0%
30 SEP 22 (12-1) Eff 5 Oct 1500Z

KOZUSHIMA, JAPAN
CAT A & B RNP Rwy 11

| | | | | | | |
|--|-------------------------------|--------------------|-----------------------------|----------------------------|---------------------|--|
| 133.7 TOKYO Control | | 133.35 | | *IZU Radio (AFIS) 124.3 | | |
| RNAV | Final Apch Crs 127° | Refer to Profile | MDA(H) Refer to Minimums | Apt Elev 454' Rwy 437' | 3800 MSA ARP | |
| MISSED APCH: Climb direct to AZ152, turn LEFT, direct to KOUGA and hold at 5000'. Contact IZU Radio. Missed Apch climb gradient MIN 5.0%. | | | | | | |
| Alt Set: IN (hPa on req) | | Trans level: FL140 | | Trans alt: 14000' | | |
| RNP Apch 1. Baro-VNAV not authorized. 2. Final approach course offset 14.7°. | | | | | | |



| | | | | |
|-----------------------|-------|-------|-------|-----|
| NM to NEXT WPT | FAF | 2.0 | 1.0 | MAP |
| ALT (3.00° APCH PATH) | 1856' | 1538' | 1219' | |



| | | | | | | | | | |
|---------------------|-----|-----|-----|-----|-----|-----|--|--|--|
| Gnd speed-Kts | 70 | 90 | 100 | 120 | 140 | 160 | | | |
| Descent Angle 3.00° | 372 | 478 | 531 | 637 | 743 | 849 | | | |
| MAP at AZ151 | | | | | | | | | |

| | | | | | |
|----------------|--|--|--|---|--------------------|
| State | | 1 STRAIGHT-IN LANDING | | 1 CIRCLE-TO-LAND Circling to South side of Rwy only | |
| LNAV/VNAV | | LNAV A: 910' (473') B: 960' (523') | | Max Kts | |
| NOT APPLICABLE | | C1500m | | 90 | 910' (456) V1600m |
| NOT APPLICABLE | | NOT APPLICABLE | | 120 | 960' (506') V1600m |
| NOT APPLICABLE | | NOT APPLICABLE | | C | NOT APPLICABLE |
| NOT APPLICABLE | | NOT APPLICABLE | | D | NOT APPLICABLE |

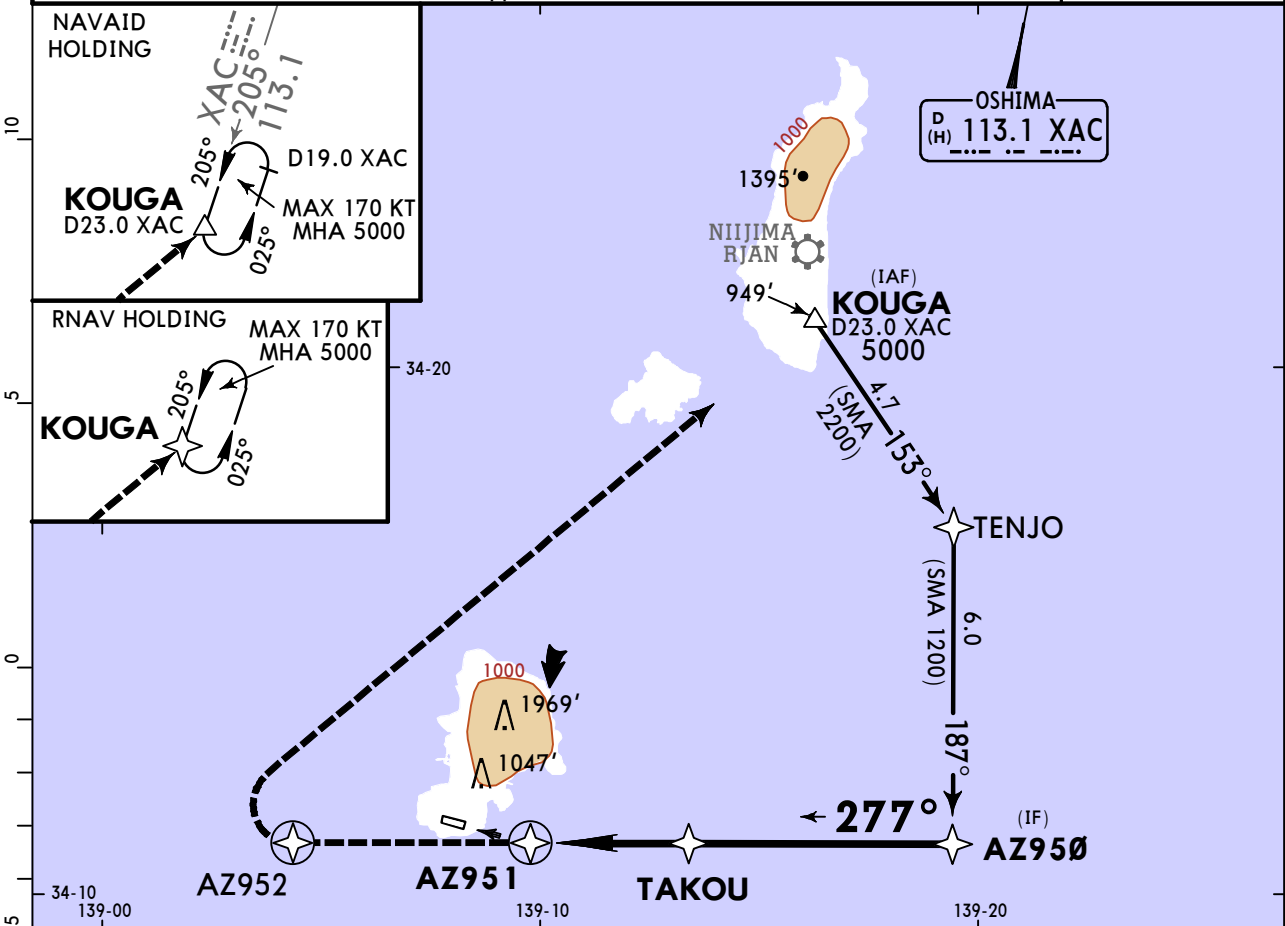
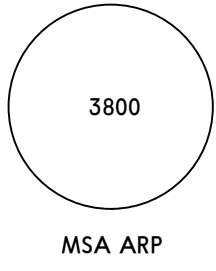
1 Minima with Missed Approach Climb Gradient of 2.5% are not established.
CHANGES: Procedure name, requirement notes. © JEPESEN, 2009, 2022. ALL RIGHTS RESERVED.

RJAZ
KOZUSHIMA

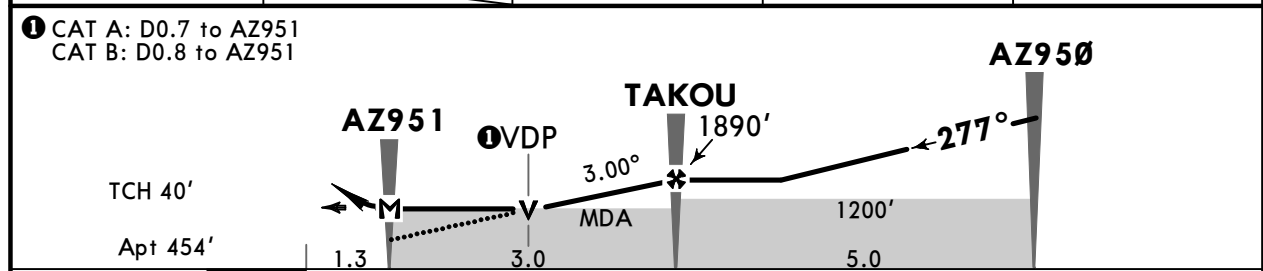
JEPESEN MISSED APCH CLIMB GRADIENT MIN 3.0%
30 SEP 22 (12-2) Eff 5 Oct 1500Z

KOZUSHIMA, JAPAN
CAT A & B RNP Rwy 29

| | | | |
|--|-------------------------------|---------------------------|-----------------------------|
| TOKYO Control | | *IZU Radio (AFIS) | |
| 133.7 | 133.35 | 124.3 | |
| RNAV | Final Apch Crs 277° | Refer to Profile | MDA(H) Refer to Minimums |
| | | Apt Elev 454' Rwy 471' | |
| MISSED APCH: Climb direct to AZ952, turn RIGHT, direct to KOUGA and hold at 5000'. Contact IZU Radio. Missed Apch climb gradient MIN 3.0%. | | | |
| Alt Set: IN (hPa on req) | | Trans level: FL140 | Trans alt: 14000' |
| RNP Apch | | | |
| 1. Baro-VNAV not authorized. 2. Final approach course offset 15°. | | | |



| | | | | |
|-----------------------|-----|-------|-------|-------|
| NM to NEXT WPT | MAP | 1.0 | 2.0 | FAF |
| ALT (3.00° APCH PATH) | | 1253' | 1572' | 1890' |



| | | | | | | | | |
|---------------------|-----|-----|-----|-----|-----|-----|----------------|-----------------------|
| Gnd speed-Kts | 70 | 90 | 100 | 120 | 140 | 160 | REIL PAPI-L | ↑ D → AZ952 |
| Descent Angle 3.00° | 372 | 478 | 531 | 637 | 743 | 849 | | |
| MAP at AZ951 | | | | | | | | |

| | | | | | |
|--------------|----------------|--|--|---|---------------------|
| State | | 1 STRAIGHT-IN LANDING | | 1 CIRCLE-TO-LAND Circling to South side of Rwy only | |
| LNAV/VNAV | | LNAV A: 1090' (636') B: 1110' (656') | | Max Kts | |
| | | MDA(H) | | MDA(H) | |
| A | NOT APPLICABLE | C1500m | | 90 | 1090' (636') V1600m |
| B | | | | 120 | 1110' (656') V1600m |
| C | NOT APPLICABLE | | | C | NOT APPLICABLE |
| D | | | | D | NOT APPLICABLE |

1 Minima with Missed Approach Climb Gradient of 2.5% are not established.
CHANGES: Procedure name, requirement notes. © JEPESEN, 2009, 2022. ALL RIGHTS RESERVED.

Chart changes since cycle 15-2023

ADD = added chart, REV = revised chart, DEL = deleted chart.

| ACT | PROCEDURE IDENT | INDEX | REV DATE | EFF DATE |
|-----|-----------------|-------|----------|----------|
|-----|-----------------|-------|----------|----------|

KOZUSHIMA, (KOZUSHIMA - RJAZ)

TERMINAL CHART CHANGE NOTICES

No Chart Change Notices for Airport RJAZ