

## List of pages in this Trip Kit

Trip Kit Index

Airport Information For UELL

Terminal Charts For UELL

Revision Letter For Cycle 08-2026

Change Notices

Notebook

## General Information

Location: NERYUNGRI RUS  
ICAO/IATA: UELL / NER  
Lat/Long: N56° 54.83', E124° 54.83'  
Elevation: 2811 ft

Airport Use: Public  
Daylight Savings: Not Observed  
UTC Conversion: -9:00 = UTC  
Magnetic Variation: 14.0° W

Fuel Types: Jet A-1  
Customs: No  
Airport Type: IFR  
Landing Fee: Yes  
Control Tower: Yes  
Jet Start Unit: No  
LLWS Alert: No  
Beacon: No

Sunrise: 1945 Z  
Sunset: 1129 Z

## Runway Information

Runway: 08  
Length x Width: 11811 ft x 148 ft  
Surface Type: concrete  
TDZ-Elev: 2816 ft  
Lighting: Edge, ALS

Runway: 26  
Length x Width: 11811 ft x 148 ft  
Surface Type: concrete  
TDZ-Elev: 2701 ft  
Lighting: Edge, ALS

## Communication Information

ATIS: 126.800  
Chulman Vyshka Tower: 118.300 Non-English  
Chulman Zemlya Ramp/Taxi: 119.000 Non-English  
Chulman Transit Operations: 131.700 Non-English



**UJLL/NER**  
**NERYUNGRI**

**JEPPESSEN**

**NERYUNGRI, RUSSIA**

13 FEB 26

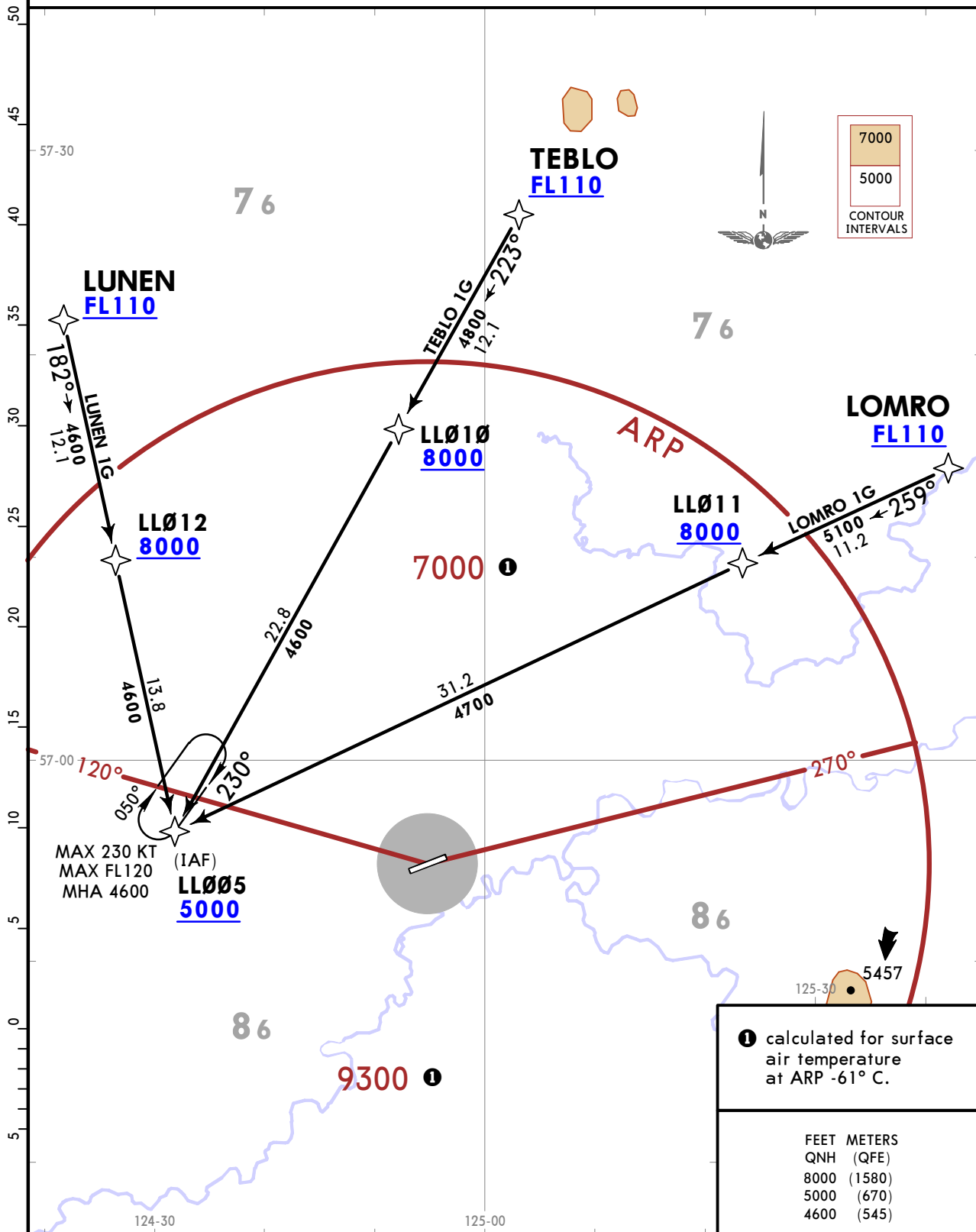
10-2

Eff 19 Feb

**RNAV STAR**

ATIS 126.8	Apt Elev 2816	Alt Set: hPa QNH (QFE on request) Trans level: FL110 FL120 if pressure is less than 1013 hPa (760 mm) FL130 if pressure is less than 977 hPa (733 mm)
		RNAV 1 GNS required

**LOMRO 1G [LOMR1G], LUNEN 1G [LUNE1G]  
TEBLO 1G [TEBL1G]  
RNAV ARRIVALS  
(RWY 08)  
FOR RUSSIAN USERS ONLY**



UJELL/NER  
NERYUNGRI

JEPPESSEN

NERYUNGRI, RUSSIA

13 FEB 26

10-2A

Eff 19 Feb

RNAV STAR

ATIS  
126.8

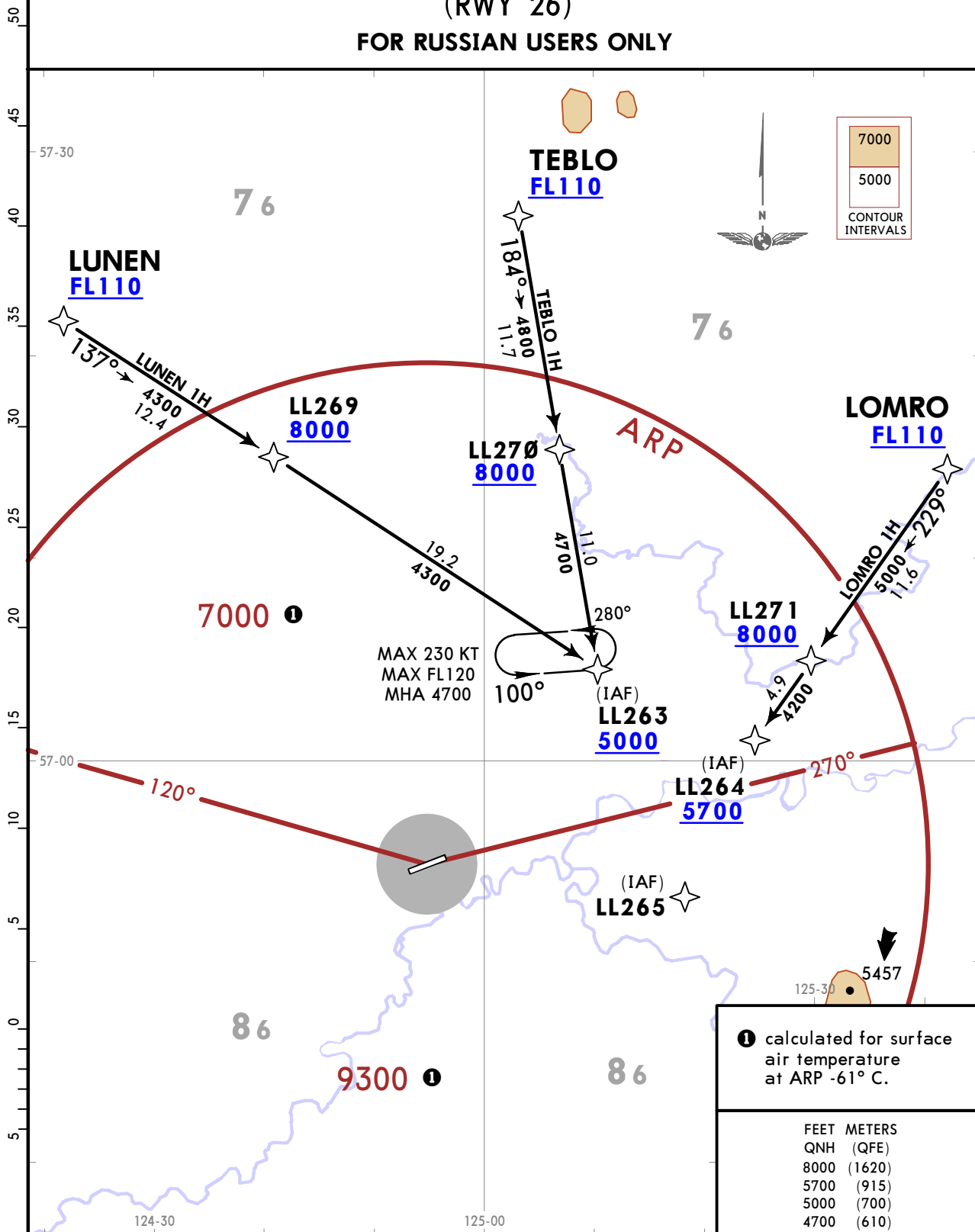
Apt Elev  
2816

Alt Set: hPa QNH (QFE on request)  
Trans level: FL110  
FL120 if pressure is less than 1013 hPa (760 mm)  
FL130 if pressure is less than 977 hPa (733 mm)

RNAV 1 GNSS required

WARNING: Simultaneous holding at LL263 & LL265 at the same alt/FL prohibited.

LOMRO 1H [LOMR1H], LUNEN 1H [LUNE1H]  
TEBLO 1H [TEBL1H]  
RNAV ARRIVALS  
(RWY 26)  
FOR RUSSIAN USERS ONLY



**UPELL/NER**  
**NERYUNGRI**

**JEPPESSEN**

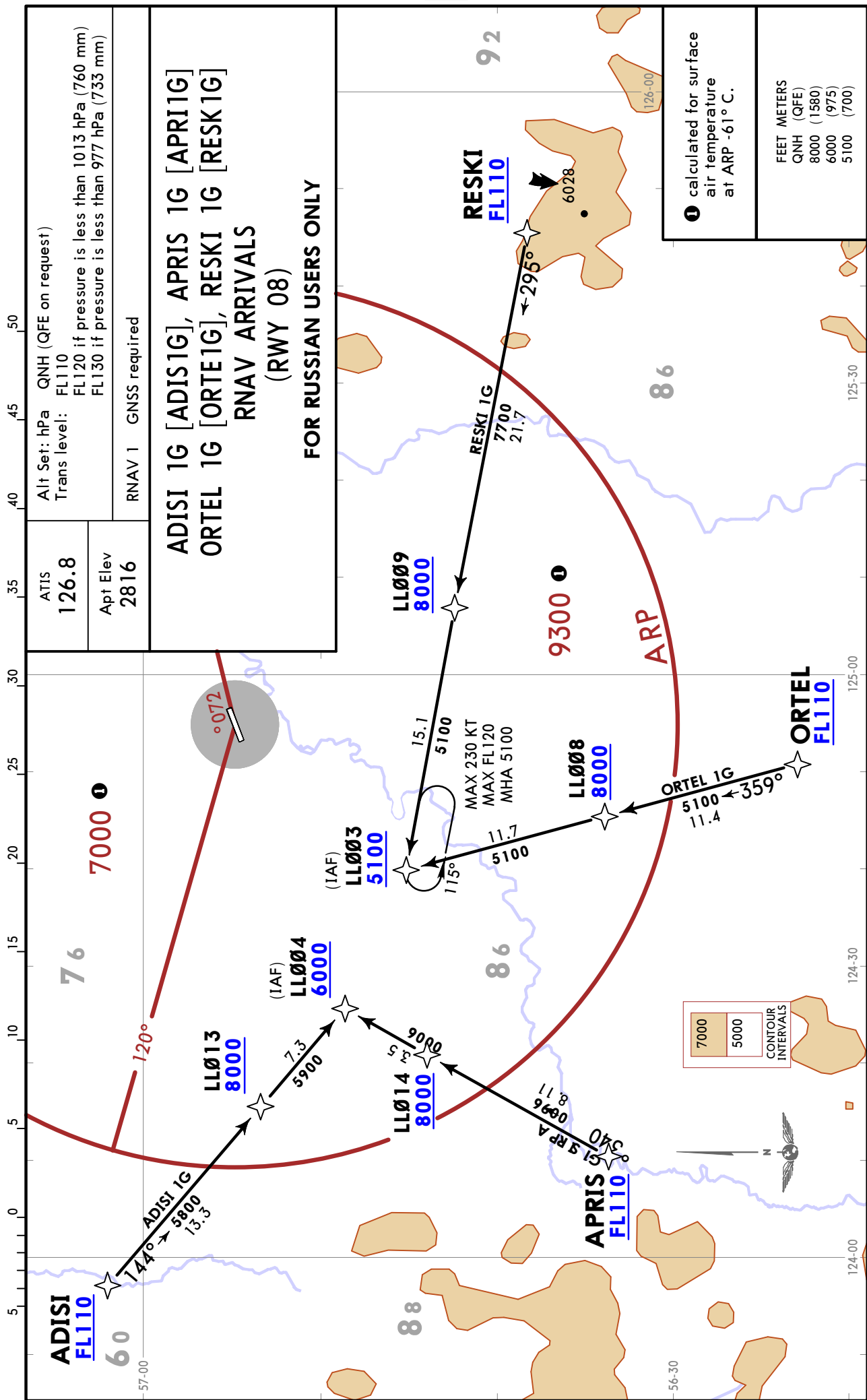
**NERYUNGRI, RUSSIA**

13 FEB 26

10-2B

Eff 19 Feb

**RNAV STAR**



CHANGES: Apt name.

© JEPPESSEN, 2024, 2026. ALL RIGHTS RESERVED.

**UELL/NER**  
**NERYUNGRI**



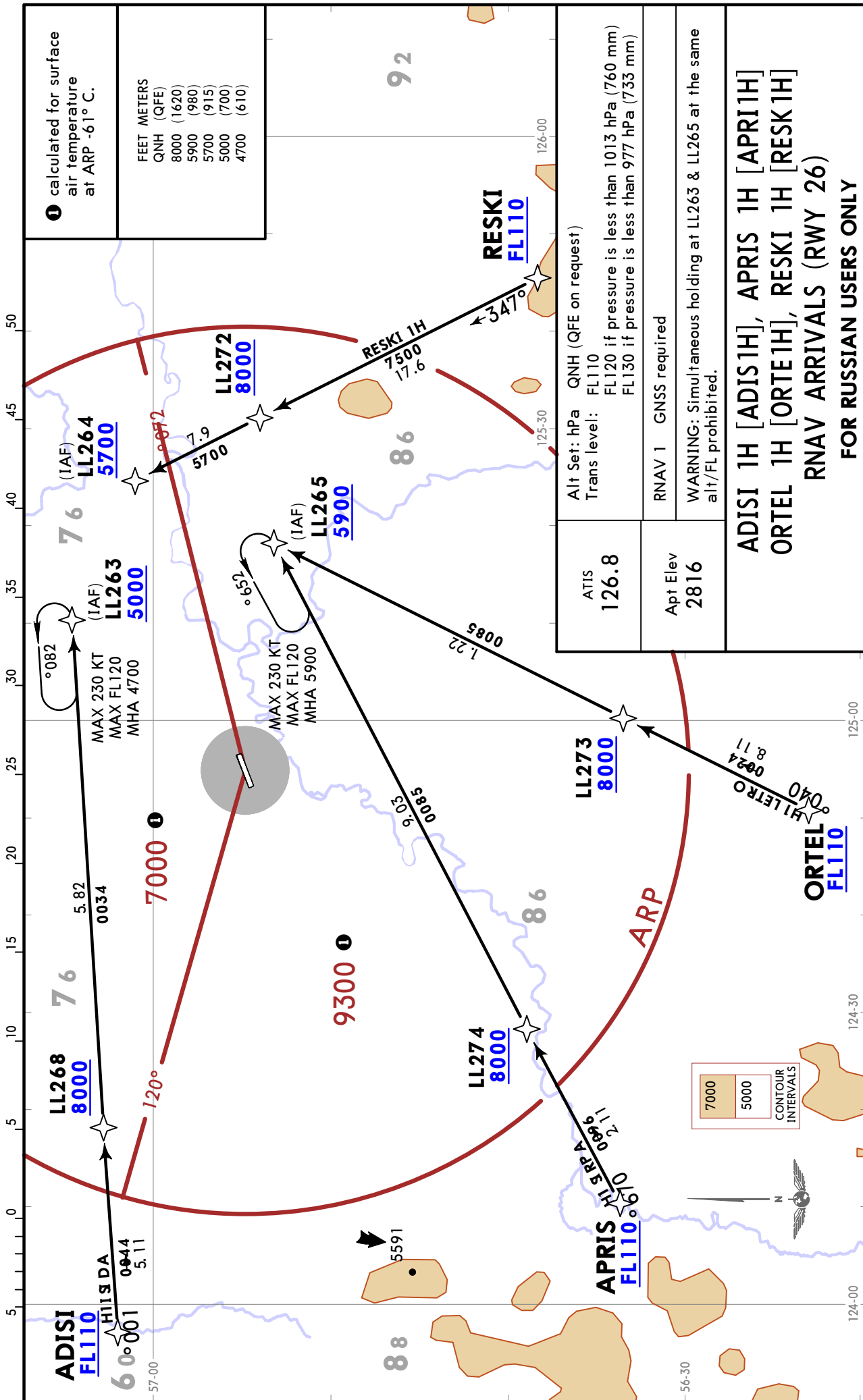
**NERYUNGRI, RUSSIA**

13 FEB 26

10-2C

Eff 19 Feb

**RNAV STAR**



CHANGES: Apt name.

© JEPPESEN, 2024, 2026. ALL RIGHTS RESERVED.

UJELL/NER  
NERYUNGRI

JEPPESEN

NERYUNGRI, RUSSIA

13 FEB 26

10-2D

Eff 19 Feb

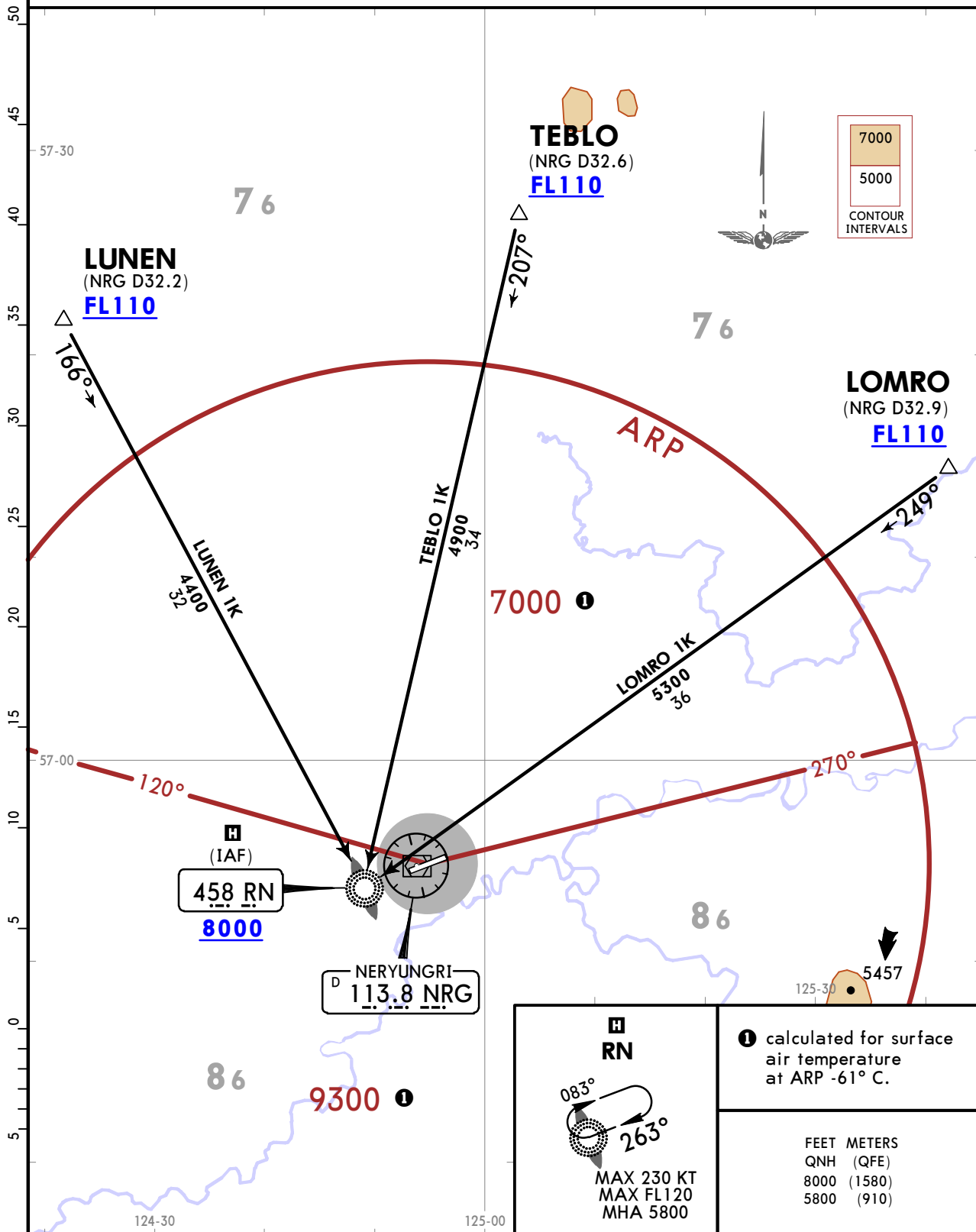
STAR

ATIS  
126.8

Apt Elev  
2816

Alt Set: hPa QNH (QFE on request)  
Trans level: FL110  
FL120 if pressure is less than 1013 hPa (760 mm)  
FL130 if pressure is less than 977 hPa (733 mm)  
DME or RADAR control required.

LOMRO 1K [LOMR1K], LUNEN 1K [LUNE1K]  
TEBLO 1K [TEBL1K]  
ARRIVALS  
(RWY 08)  
FOR RUSSIAN USERS ONLY



UJELL/NER  
NERYUNGRI

JEPPESEN

NERYUNGRI, RUSSIA

13 FEB 26

10-2E

Eff 19 Feb

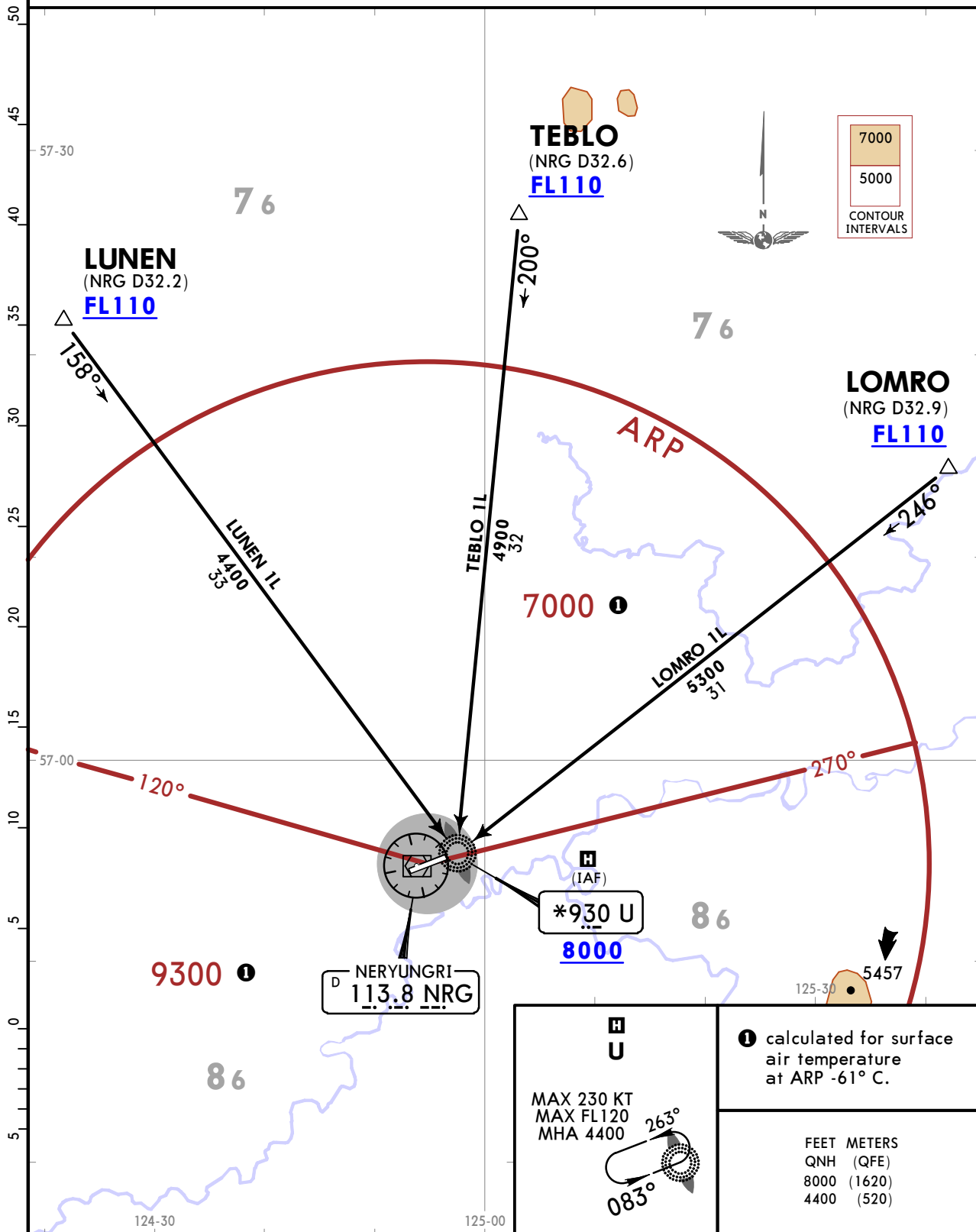
STAR

ATIS  
126.8

Apt Elev  
2816

Alt Set: hPa QNH (QFE on request)  
Trans level: FL110  
FL120 if pressure is less than 1013 hPa (760 mm)  
FL130 if pressure is less than 977 hPa (733 mm)  
DME or RADAR control required.

LOMRO 1L [LOMR1L], LUNEN 1L [LUNE1L]  
TEBLO 1L [TEBL1L]  
ARRIVALS  
(RWY 26)  
FOR RUSSIAN USERS ONLY



UPELL/NER  
NERYUNGRI

JEPPESEN

NERYUNGRI, RUSSIA

13 FEB 26

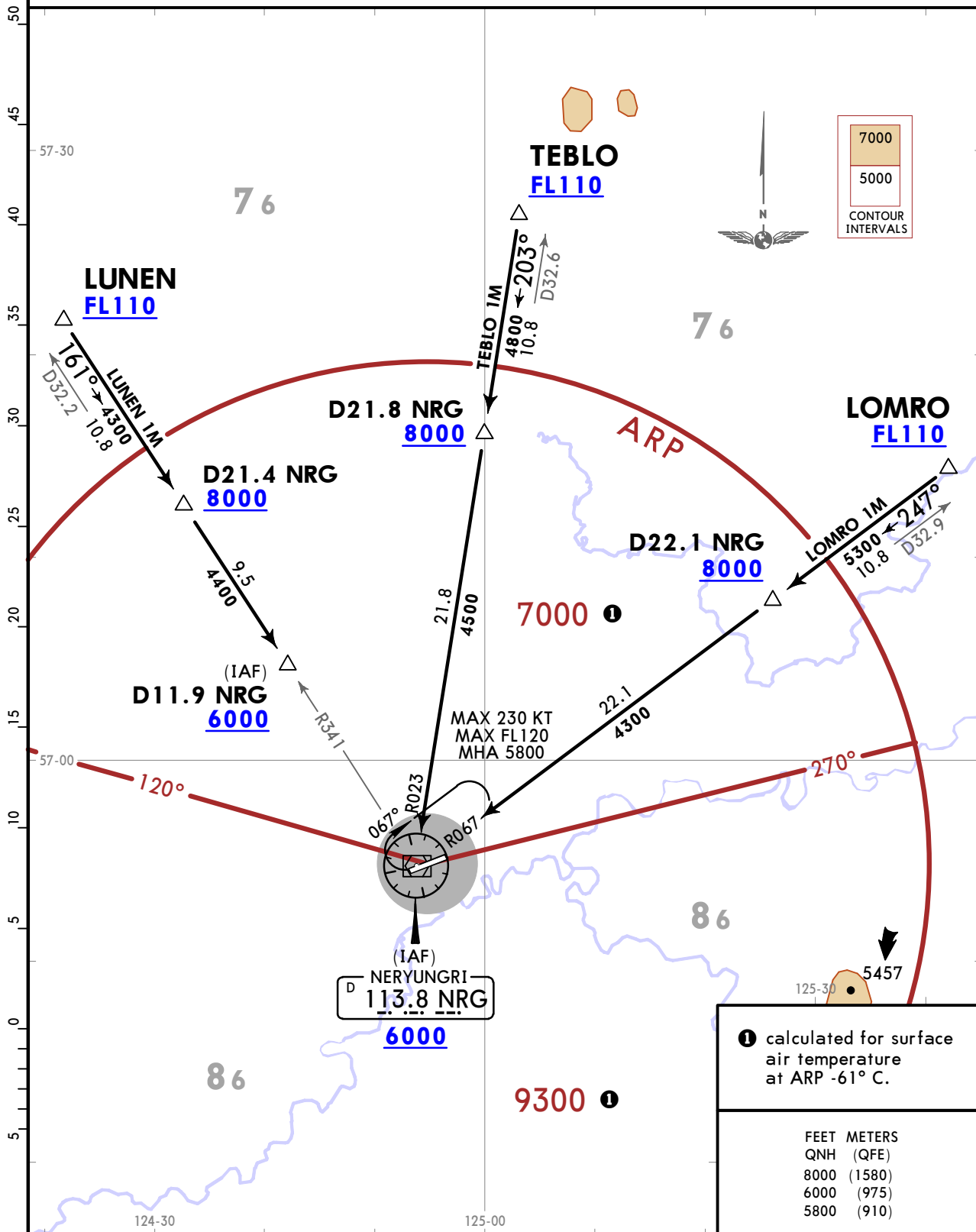
10-2F

Eff 19 Feb

STAR

ATIS <b>126.8</b>	Apt Elev <b>2816</b>	Alt Set: hPa QNH (QFE on request) Trans level: FL110 FL120 if pressure is less than 1013 hPa (760 mm) FL130 if pressure is less than 977 hPa (733 mm) DME required.
----------------------	-------------------------	---

**LOMRO 1M [LOMR1M], LUNEN 1M [LUNE1M]  
TEBLO 1M [TEBL1M]  
ARRIVALS  
(RWY 08)  
FOR RUSSIAN USERS ONLY**



UJELL/NER  
NERYUNGRI

JEPPESEN

NERYUNGRI, RUSSIA

13 FEB 26

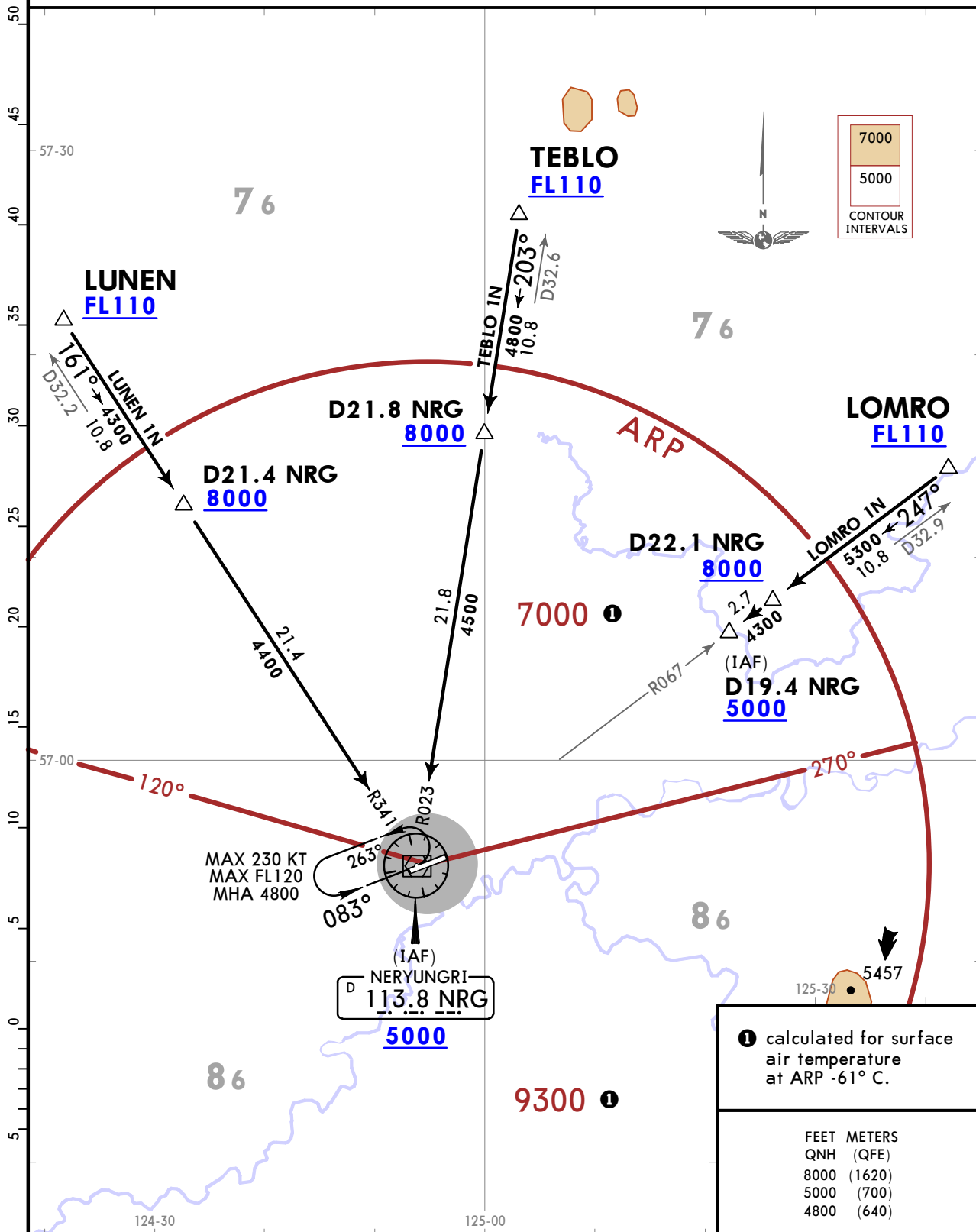
10-2G

Eff 19 Feb

STAR

ATIS 126.8	Apt Elev 2816	Alt Set: hPa QNH (QFE on request) Trans level: FL110 FL120 if pressure is less than 1013 hPa (760 mm) FL130 if pressure is less than 977 hPa (733 mm) DME required.
---------------	------------------	---

LOMRO 1N [LOMR1N], LUNEN 1N [LUNE1N]  
 TEBLO 1N [TEBL1N]  
 ARRIVALS  
 (RWY 26)  
 FOR RUSSIAN USERS ONLY









UELL/NER  
NERYUNGRI



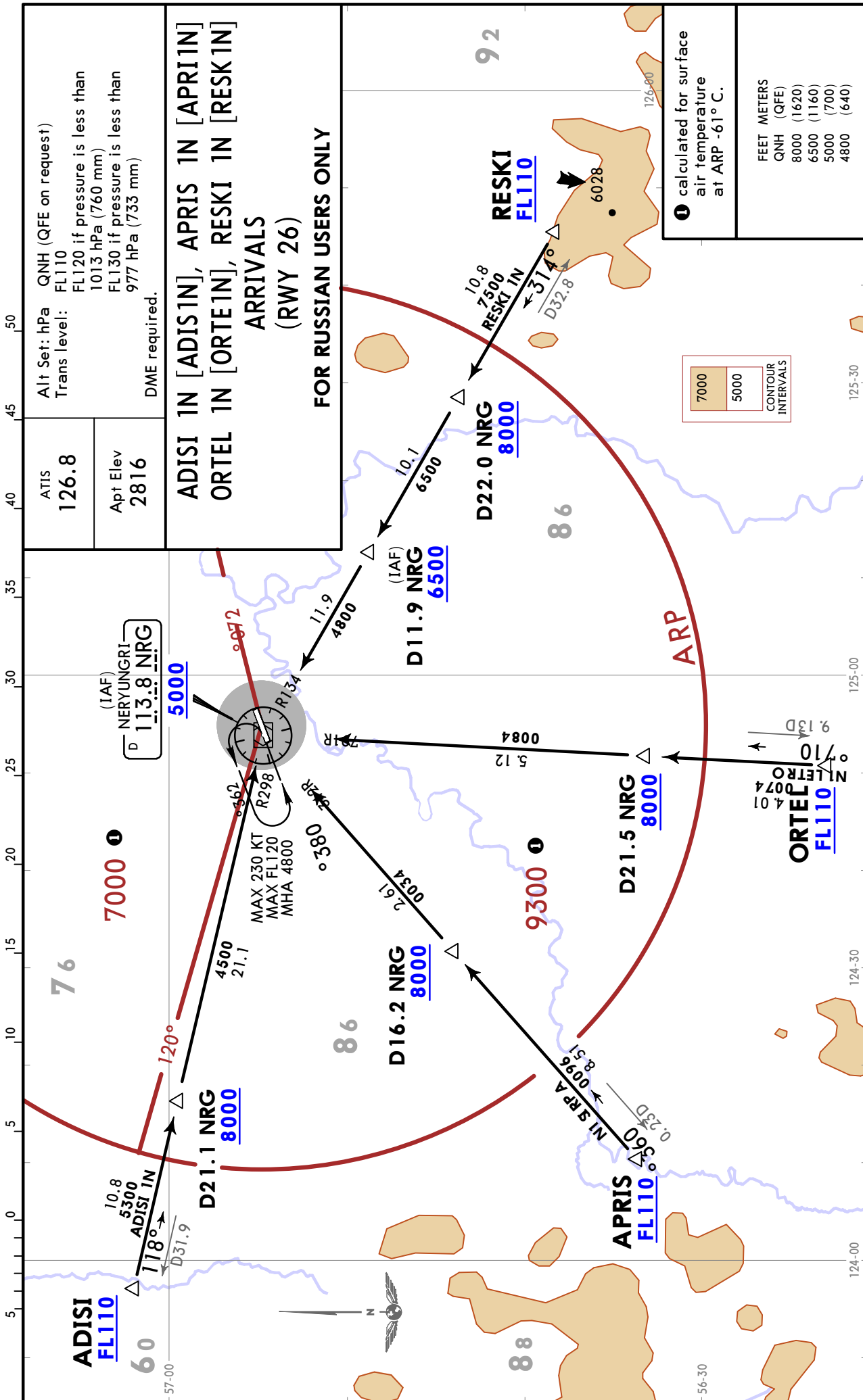
NERYUNGRI, RUSSIA

13 FEB 26

10-2L

Eff 19 Feb

STAR



CHANGES: Apt name, NRG VOR name.

© JEPPESEN, 2024, 2026. ALL RIGHTS RESERVED.

UPELL/NER  
NERYUNGRI

JEPPESEN  
13 FEB 26 10-3 Eff 19 Feb

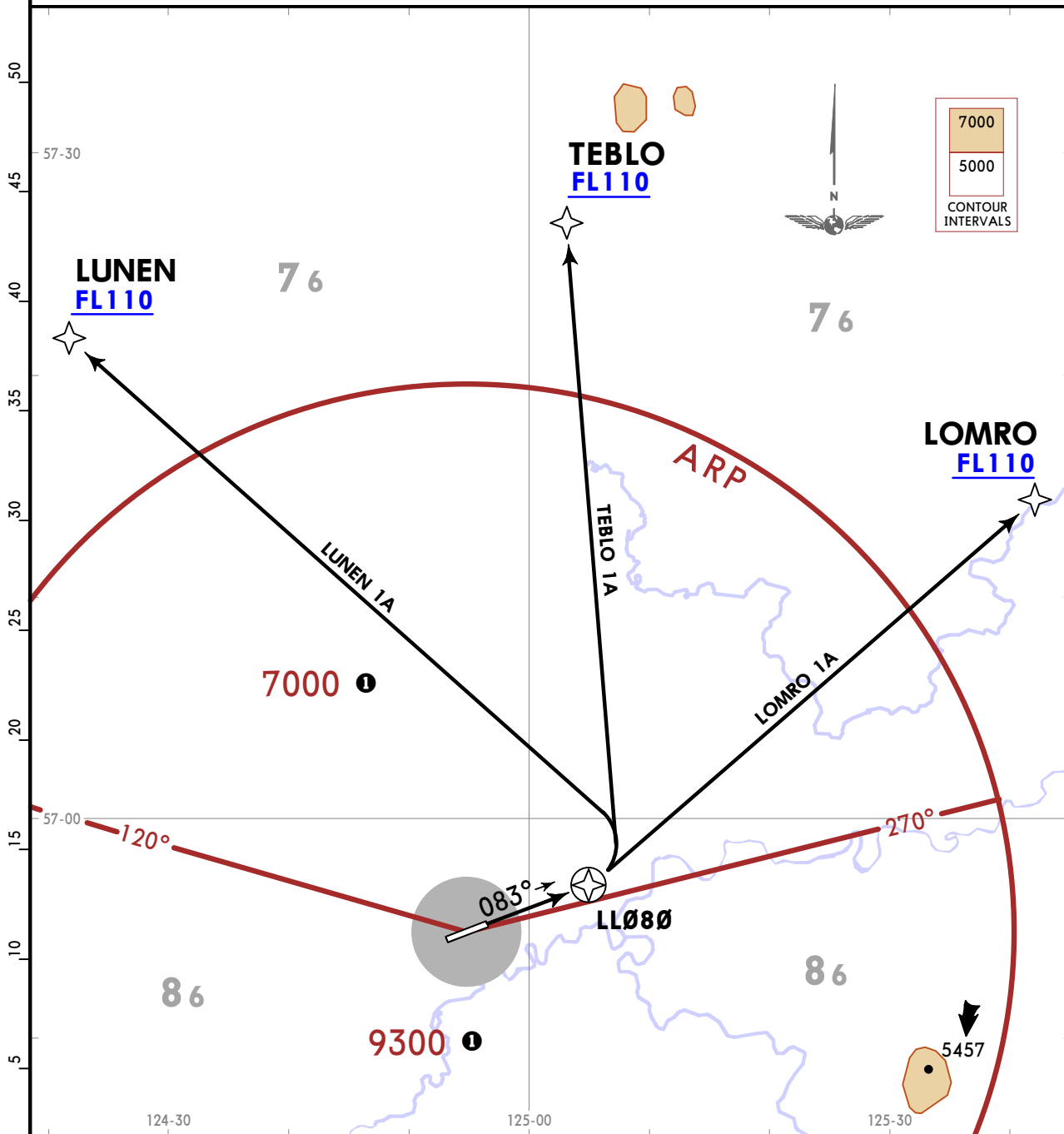
NERYUNGRI, RUSSIA  
RNAV SID

Apt Elev  
2816

Trans alt: 10000 QFE on request (QNH)

RNAV 1 GNSS required

LOMRO 1A [LOMR1A], LUNEN 1A [LUNE1A]  
TEBLO 1A [TEBL1A]  
RNAV DEPARTURES  
(RWY 08)  
FOR RUSSIAN USERS ONLY



These SIDs require minimum climb gradients of 3.6% up to 3000 due to obstacles.  
LOMRO 1A: 4.4% up to FL110 due to airspace structure.  
TEBLO 1A: 3.9% up to FL110 due to airspace structure.

Gnd speed-KT	75	100	150	200	250	300
3.6% V/V (fpm)	273	365	547	729	911	1094
3.9% V/V (fpm)	296	395	592	790	987	1185
4.4% V/V (fpm)	334	446	668	891	1114	1337

① calculated for surface air temperature at ARP -61° C.

FEET METERS  
QNH (QFE)  
10000 (2200)  
3000 (60)

**UJLL/NER**  
**NERYUNGRI**

**JEPPESEN**  
13 FEB 26 **(10-3A)** Eff 19 Feb

**NERYUNGRI, RUSSIA**  
**RNAV SID**

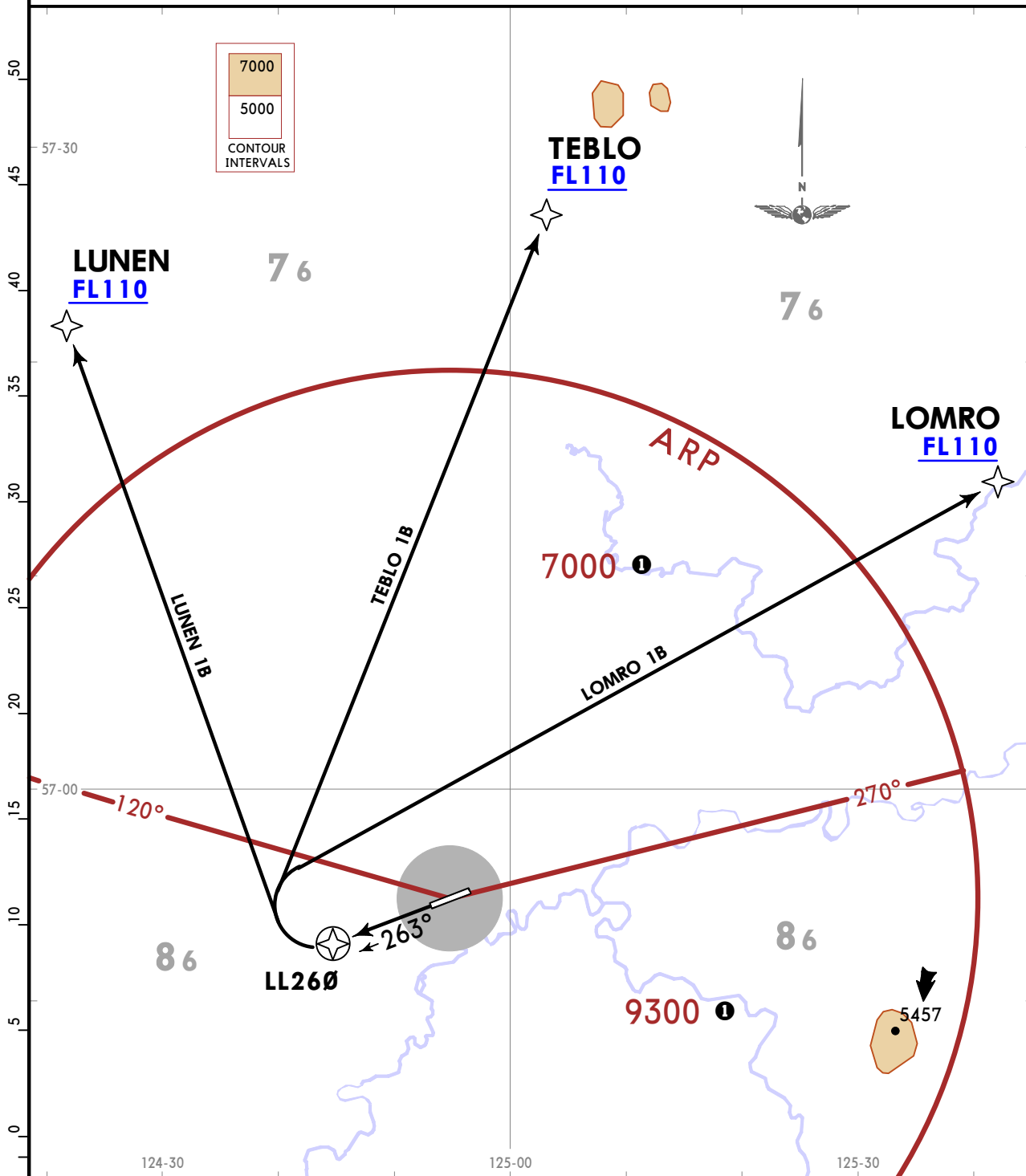
Apt Elev  
**2816**

Trans alt: 10000 QFE on request (QNH)

RNAV 1 GNSS required

EXPECT close-in obstacles.

**LOMRO 1B [LOMR1B], LUNEN 1B [LUNE1B]  
TEBLO 1B [TEBL1B]  
RNAV DEPARTURES  
(RWY 26)  
FOR RUSSIAN USERS ONLY**



**LUNEN 1B:**  
This SID requires a minimum climb gradient of 3.6% up to FL110 due to airspace structure.

Gnd speed-KT	75	100	150	200	250	300
3.6% V/V (fpm)	273	365	547	729	911	1094

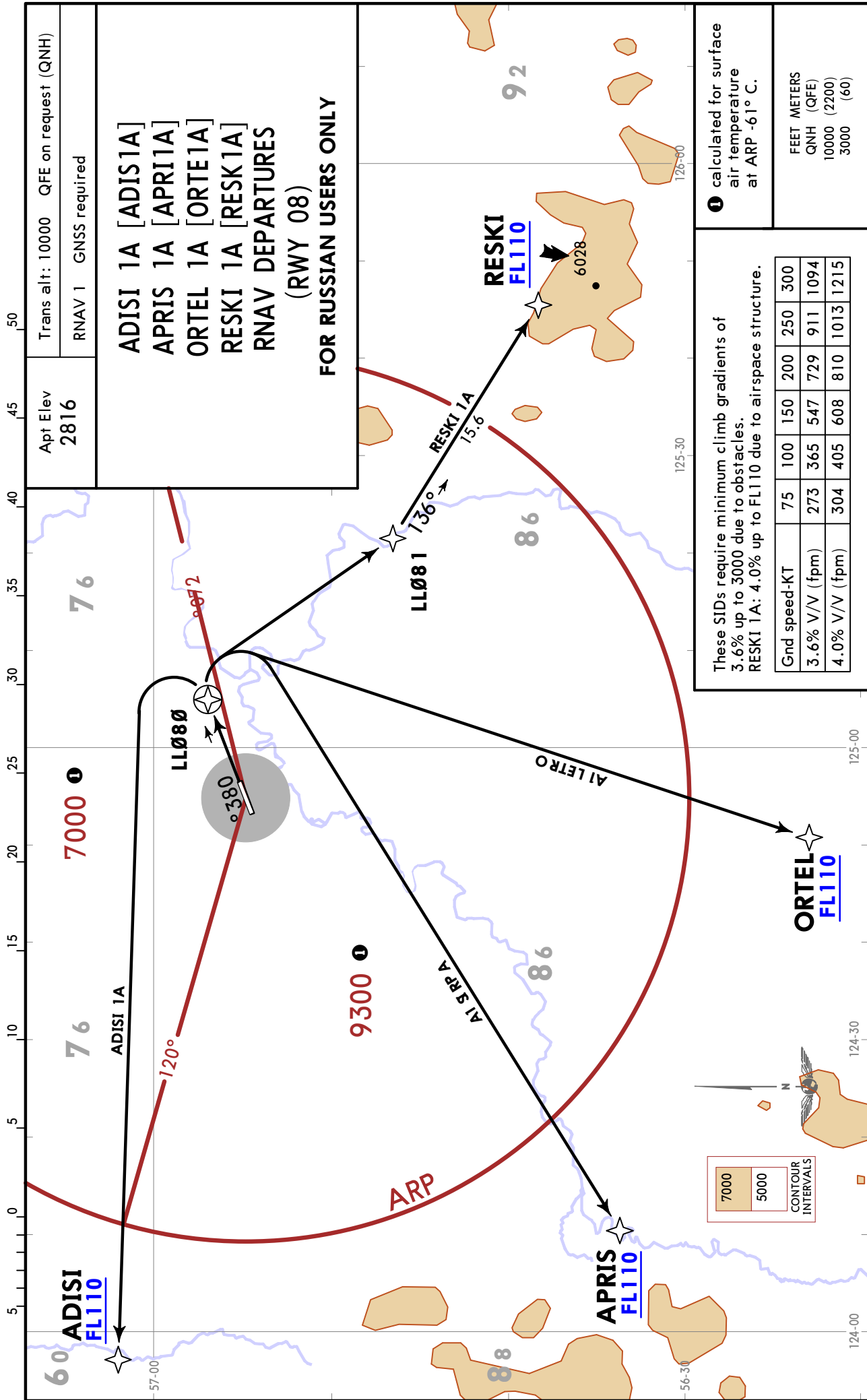
**①** calculated for surface air temperature at ARP -61° C.

FEET METERS  
QNH (QFE)  
10000 (2200)

**UPELL/NER**  
**NERYUNGRI**

**JEPPESEN**  
13 FEB 26 **10-3B** Eff 19 Feb

**NERYUNGRI, RUSSIA**  
**RNAV SID**



Trans alt: 10000 QFE on request (QNH)  
RNAV 1 GNSS required

**ADISI 1A [ADISI1A]**  
**APRIS 1A [APRI1A]**  
**ORTEL 1A [ORTE1A]**  
**RESKI 1A [RESK1A]**  
**RNAV DEPARTURES**  
**(RWY 08)**

**FOR RUSSIAN USERS ONLY**

Apt Elev  
**2816**

**1** calculated for surface air temperature at ARP -61° C.

FEET METERS
QNH (QFE)
10000 (2200)
3000 (60)

These SIDs require minimum climb gradients of 3.6% up to 3000 due to obstacles.  
RESKI 1A: 4.0% up to FL110 due to airspace structure.

Gnd speed-KT	75	100	150	200	250	300
3.6% V/V (fpm)	273	365	547	729	911	1094
4.0% V/V (fpm)	304	405	608	810	1013	1215

CHANGES: Apt name.



UJLL/NER  
NERYUNGRI

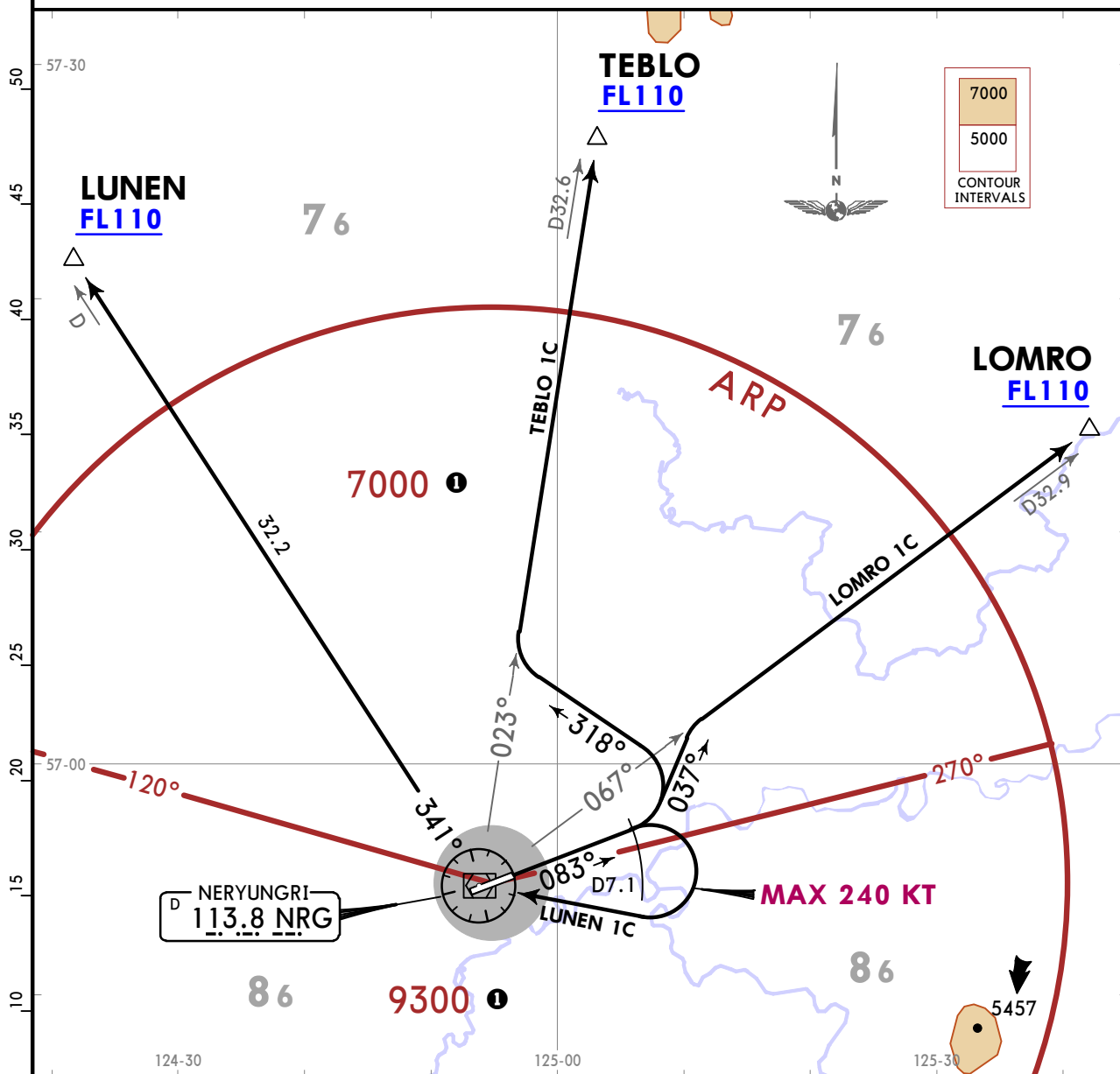
JEPPESEN  
13 FEB 26 (10-3D) Eff 19 Feb

NERYUNGRI, RUSSIA  
SID

Apt Elev  
2816

Trans alt: 10000 QFE on request (QNH)  
DME required.

LOMRO 1C [LOMR1C], LUNEN 1C [LUNE1C]  
TEBLO 1C [TEBL1C]  
DEPARTURES  
(RWY 08)  
FOR RUSSIAN USERS ONLY



These SIDs require minimum climb gradients of 3.6% up to 3000 due to obstacles.  
LOMRO 1C: 4.4% up to FL110 due to airspace structure.  
TEBLO 1C: 3.9% up to FL110 due to airspace structure.

Gnd speed-KT	75	100	150	200	250	300
3.6% V/V (fpm)	273	365	547	729	911	1094
3.9% V/V (fpm)	296	395	592	790	987	1185
4.4% V/V (fpm)	334	446	668	891	1114	1337

① calculated for surface air temperature at ARP -61° C.

FEET METERS  
QNH (QFE)  
10000 (2200)  
3000 (60)

SID	ROUTING
LOMRO 1C	Climb on 083° track to D7.1 NRG, turn LEFT, 037° track, intercept NRG R067 to LOMRO.
LUNEN 1C	Climb on 083° track to D7.1 NRG, turn RIGHT to NRG, NRG R341 to LUNEN.
TEBLO 1C	Climb on 083° track to D7.1 NRG, turn LEFT, 318° track, intercept NRG R023 to TEBLO.

CHANGES: Apt name, NRG VOR name.

© JEPPESEN, 2024, 2026. ALL RIGHTS RESERVED.

UJELL/NER  
NERYUNGRI

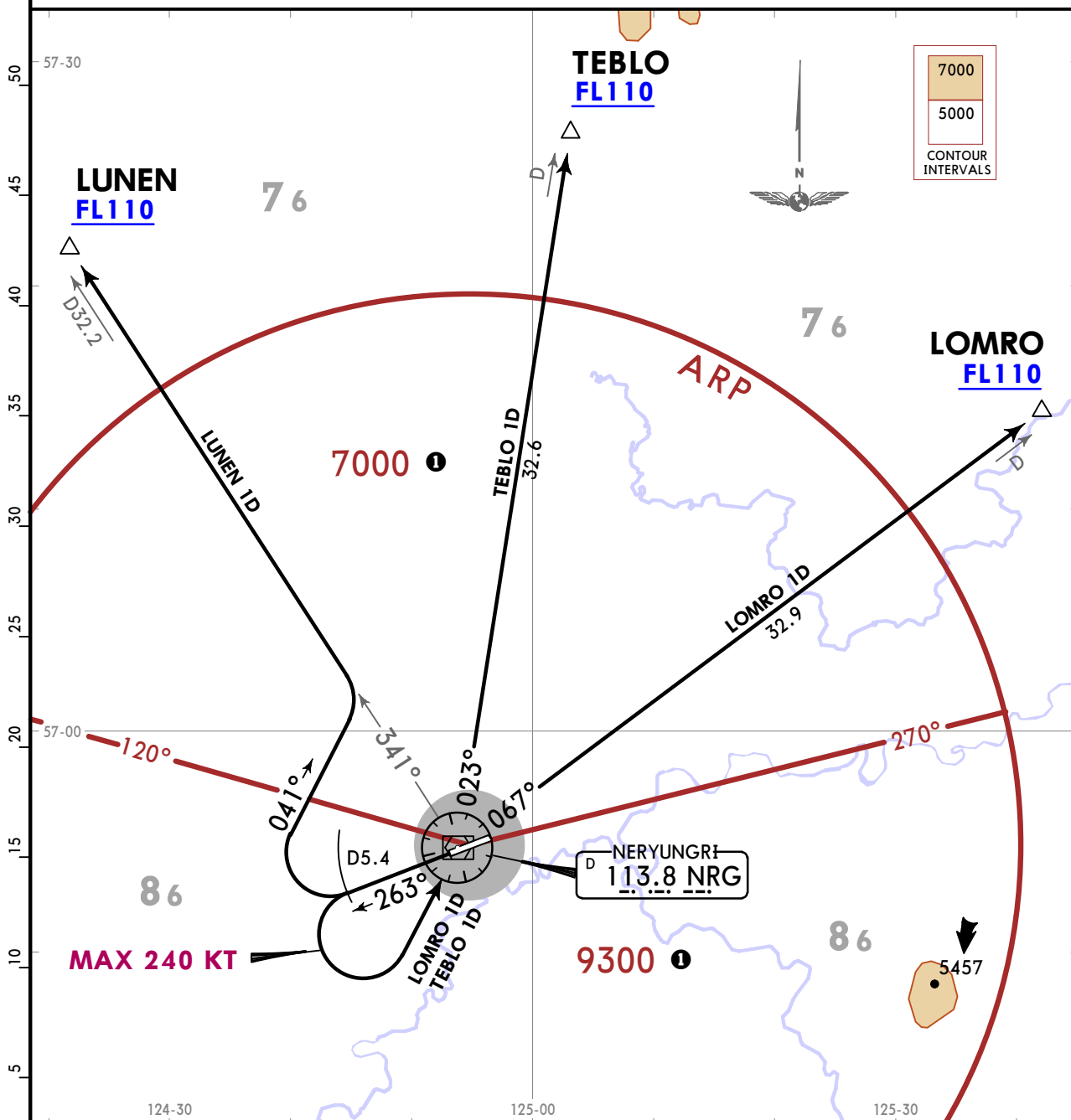
JEPPESEN  
13 FEB 26 (10-3E) Eff 19 Feb

NERYUNGRI, RUSSIA  
SID

Apt Elev  
2816

Trans alt: 10000 QFE on request (QNH)  
1. DME required.  
2. EXPECT close-in obstacles.

LOMRO 1D [LOMR1D], LUNEN 1D [LUNE1D]  
TEBLO 1D [TEBL1D]  
DEPARTURES  
(RWY 26)  
FOR RUSSIAN USERS ONLY



LUNEN 1D:  
This SID requires a minimum climb gradient of 3.6% up to FL110 due to airspace structure.

Gnd speed-KT	75	100	150	200	250	300
3.6% V/V (fpm)	273	365	547	729	911	1094

① calculated for surface air temperature at ARP -61° C.

FEET METERS  
QNH (QFE)  
10000 (2200)

SID	ROUTING
LOMRO 1D	Climb on 263° track to D5.4 NRG, turn LEFT to NRG, NRG R067 to LOMRO.
LUNEN 1D	Climb on 263° track to D5.4 NRG, turn RIGHT, 041° track, intercept NRG R341 to LUNEN.
TEBLO 1D	Climb on 263° track to D5.4 NRG, turn LEFT to NRG, NRG R023 to TEBLO.

UJELL/NER  
NERYUNGRI

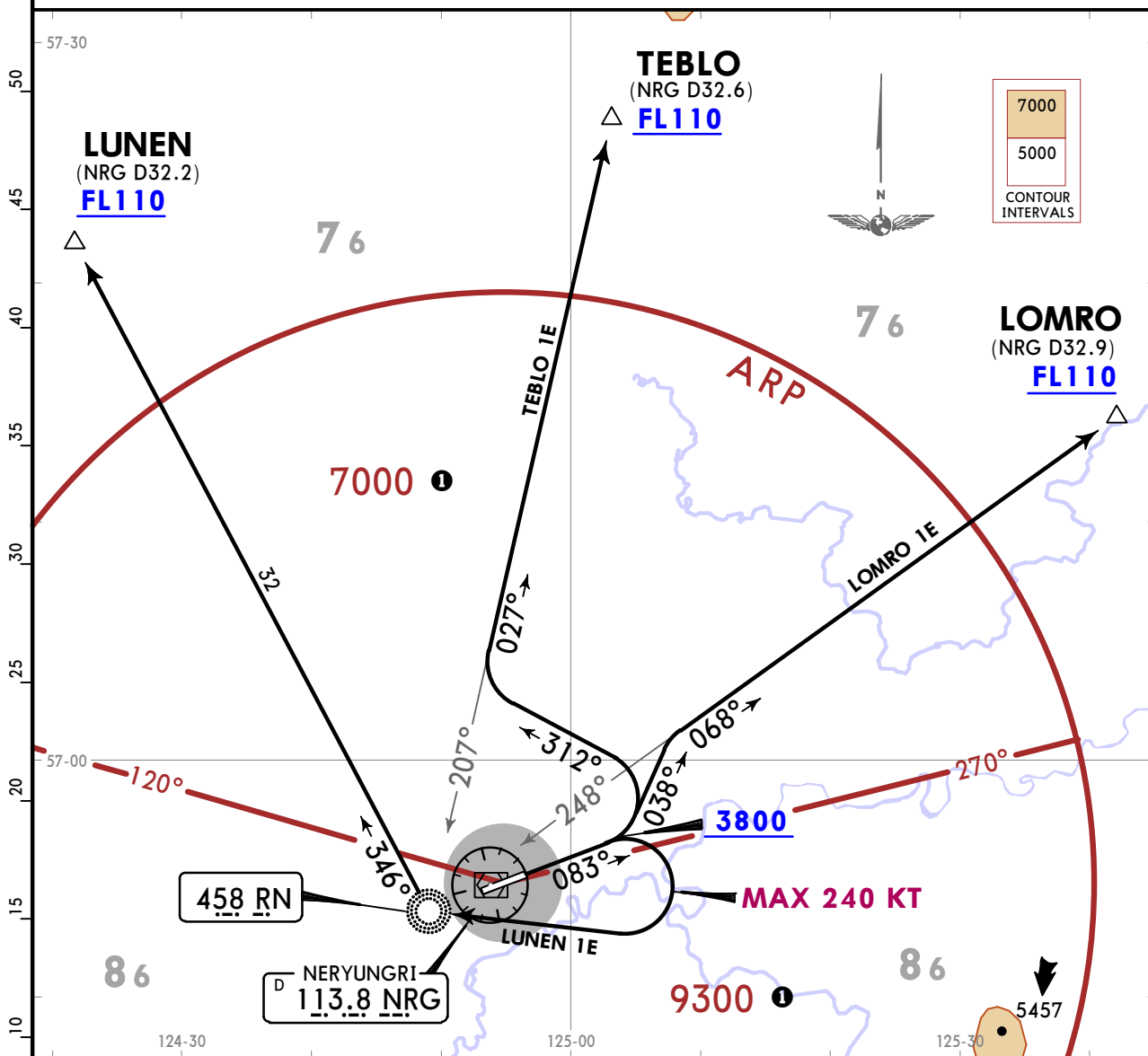
JEPPESEN  
13 FEB 26 10-3F Eff 19 Feb

NERYUNGRI, RUSSIA  
SID

Apt Elev  
2816

Trans alt: 10000 QFE on request (QNH)  
DME or RADAR control required.

LOMRO 1E [LOMR1E], LUNEN 1E [LUNE1E]  
TEBLO 1E [TEBL1E]  
DEPARTURES  
(RWY 08)  
FOR RUSSIAN USERS ONLY



These SIDs require minimum climb gradients of 3.6% up to 3000 due to obstacles.  
LOMRO 1E: 4.4% up to FL110 due to airspace structure.  
TEBLO 1E: 3.9% up to FL110 due to airspace structure.

Gnd speed-KT	75	100	150	200	250	300
3.6% V/V (fpm)	273	365	547	729	911	1094
3.9% V/V (fpm)	296	395	592	790	987	1185
4.4% V/V (fpm)	334	446	668	891	1114	1337

① calculated for surface air temperature at ARP -61° C.

FEET	METERS
QNH	(QFE)
10000	(2200)
3800	(300)
3000	(60)

SID	ROUTING
LOMRO 1E	Climb on 083° track to at or above 3800, turn LEFT, 038° track, intercept 068° bearing from RN to LOMRO.
LUNEN 1E	Climb on 083° track to at or above 3800, turn RIGHT to RN, 346° bearing to LUNEN.
TEBLO 1E	Climb on 083° track to at or above 3800, turn LEFT, 312° track, intercept 027° bearing from RN to TEBLO.

UPELL/NER  
NERYUNGRI

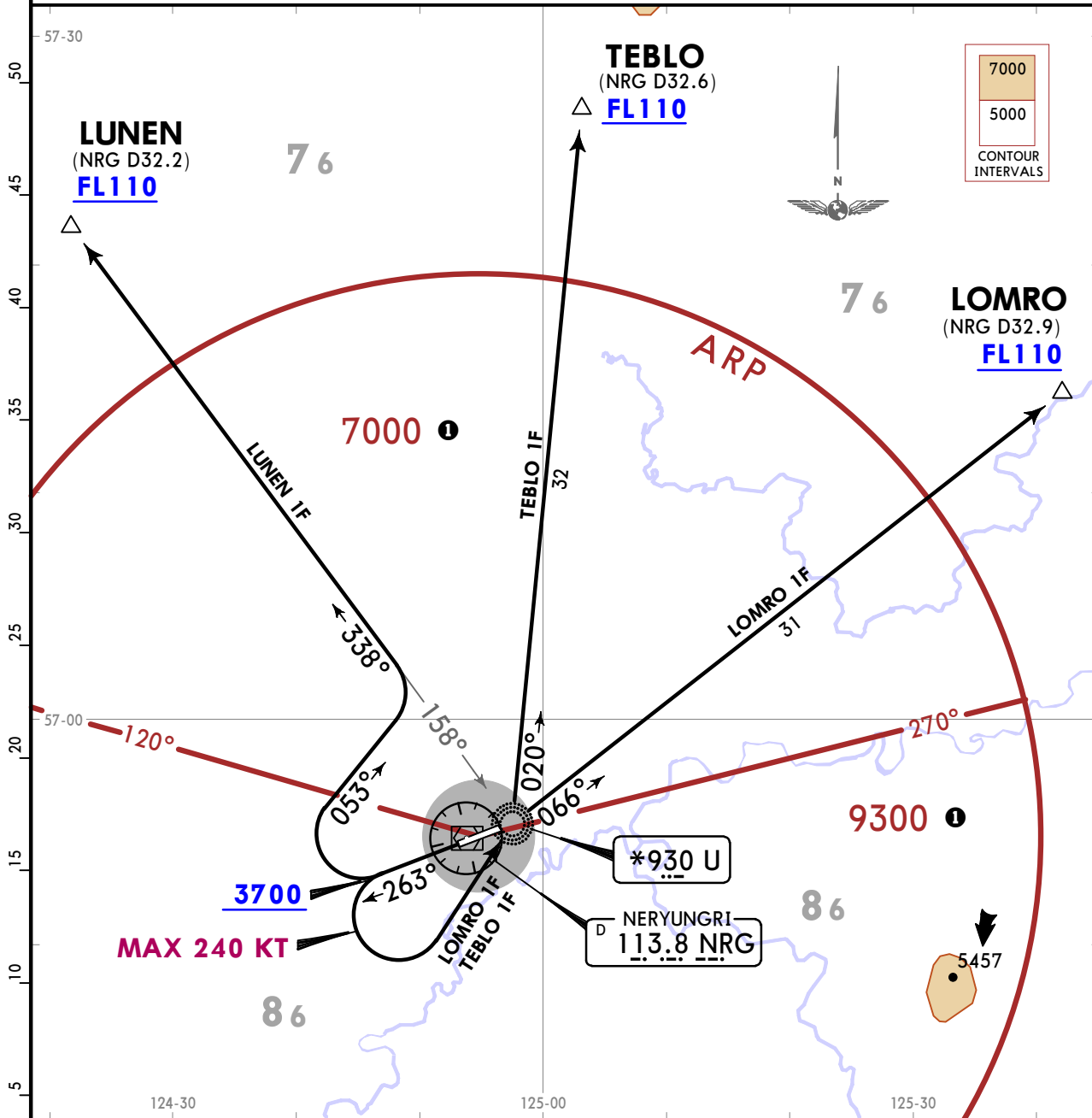
JEPPESEN  
13 FEB 26 (10-3G) Eff 19 Feb

NERYUNGRI, RUSSIA  
SID

Apt Elev  
2816

Trans alt: 10000 QFE on request (QNH)  
1. DME or RADAR control required.  
2. EXPECT close-in obstacles.

LOMRO 1F [LOMR1F], LUNEN 1F [LUNE1F]  
TEBLO 1F [TEBL1F]  
DEPARTURES  
(RWY 26)  
FOR RUSSIAN USERS ONLY



LUNEN 1F:  
This SID requires a minimum climb gradient of 3.6% up to FL110 due to airspace structure.

Gnd speed-KT	75	100	150	200	250	300
3.6% V/V (fpm)	273	365	547	729	911	1094

① calculated for surface air temperature at ARP -61° C.

FEET	METERS
QNH (QFE)	
10000 (2200)	
3700 (305)	

SID	ROUTING
LOMRO 1F	Climb on 263° track to at or above 3700, turn LEFT TO U, 066° bearing to LOMRO.
LUNEN 1F	Climb on 263° track to at or above 3700, turn RIGHT, 053° track, intercept 338° bearing from U to LUNEN.
TEBLO 1F	Climb on 263° track to at or above 3700, turn LEFT to U, 020° bearing to TEBLO.









UJLL/NER  
NERYUNGRI

 **JEPPESEN**  
13 FEB 26 **10-4** **Eff 19 Feb**

**NERYUNGRI, RUSSIA**  
**NOISE**

---

## NOISE ABATEMENT

---

LT minus 9 HOURS = UTC (Z)

### FOR RUSSIAN USERS ONLY

## GENERAL

Populated areas are not present in the terminal area of Neryungri on take-off and landing heading of ACFT.

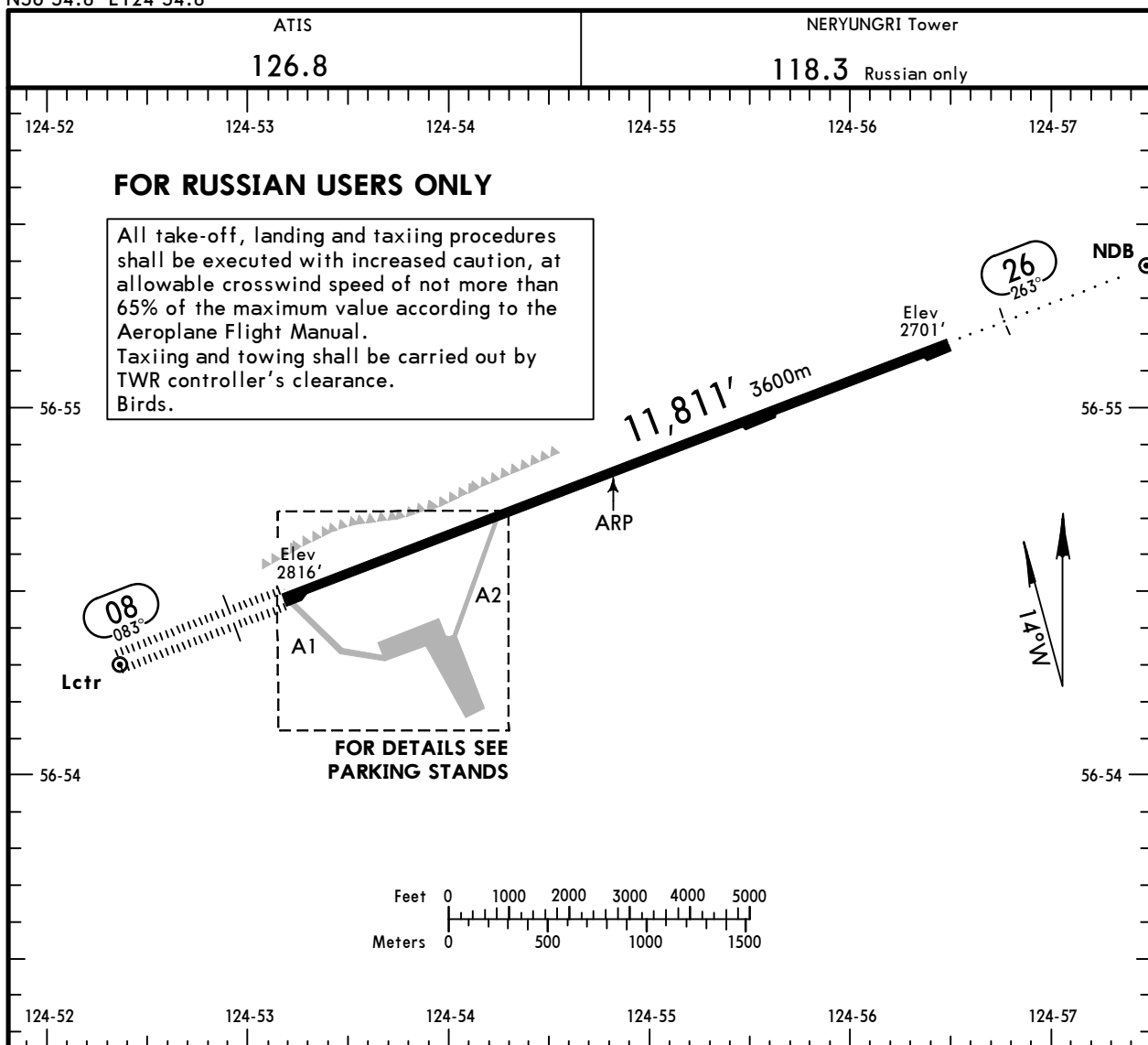
It is recommended to use external power sources (ground auxiliary power units or 400 Hz generators) instead of APU.

Use minimum engine thrust during taxiing.

**UELL/NER**  
 Apt Elev **2816'**  
 N56 54.8 E124 54.8

**JEPPESSEN**  
 13 FEB 26 **(10-9)** Eff 19 Feb

**NERYUNGRI, RUSSIA**  
 NERYUNGRI



RWY	ADDITIONAL RUNWAY INFORMATION			
	LANDING BEYOND		TAKE-OFF	WIDTH
	Threshold	Glide Slope		
01				243' 74m
08	RL (60m) ① HIALS	PAPI-L (angle 3.0°)	③	148' 45m
26	RL (60m) ② ALS	PAPI-L (angle 3.0°)		

① length 891m  
 ② length 888m  
 ③ TAKE-OFF RUN AVAILABLE

**RWY 08:**  
 From rwy head 11,811'(3600m)  
 twy A2 int 8202'(2500m)

Std TAKE-OFF			
① RL & RCLM	① RL or RCLM	Adequate Vis Ref	
		DAY	NIGHT
R/V300m	R/V400m	R/V500m	NA

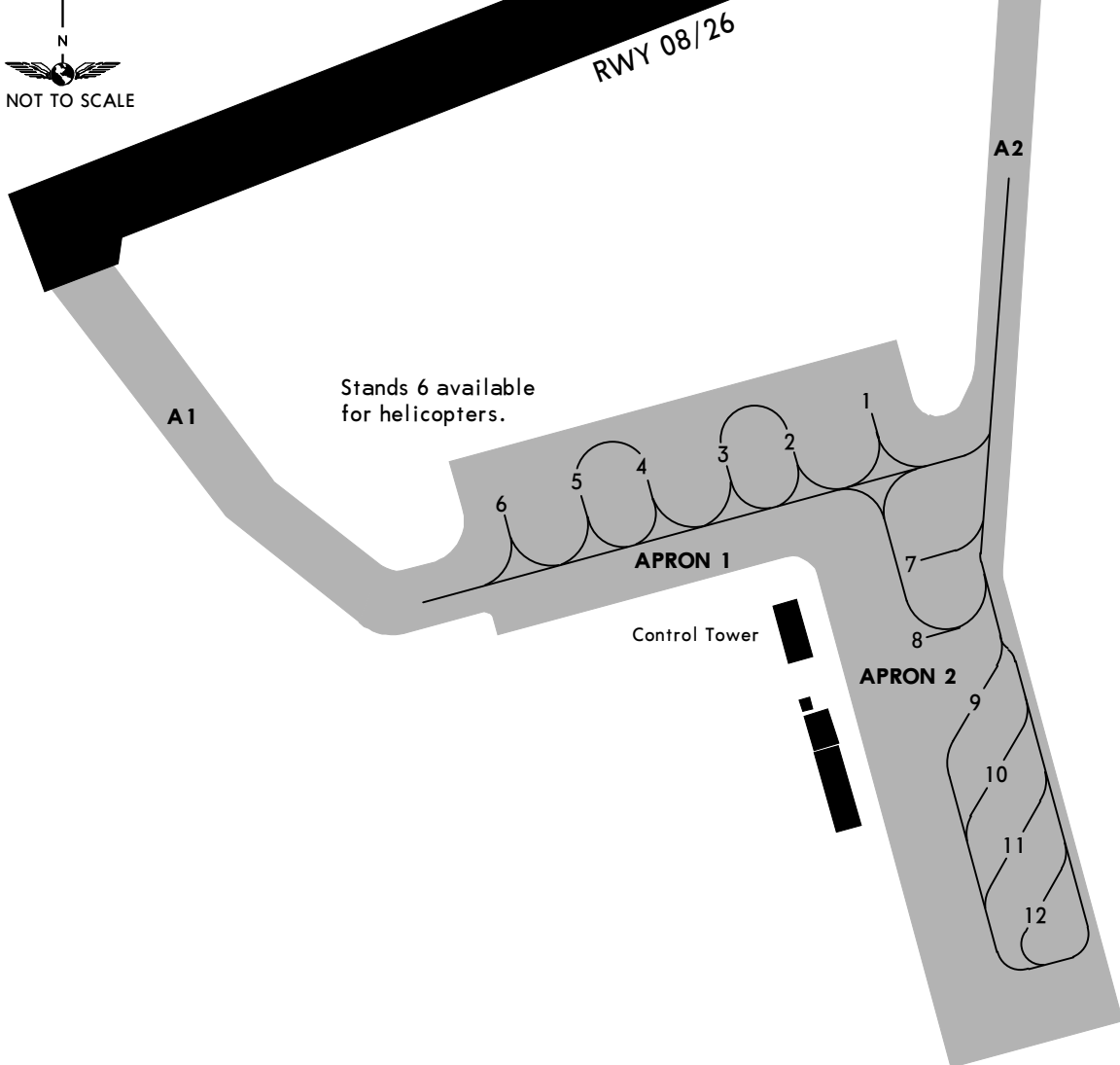
① For NIGHT operations, at least RL and RENL are required.  
 CHANGES: Apt name, call sign. © JEPPESSEN, 2011, 2026. ALL RIGHTS RESERVED.

UJLL/NER

**JEPPESEN**  
13 FEB 26 (10-9A) Eff 19 Feb

**NERYUNGRI, RUSSIA**  
NERYUNGRI

**FOR RUSSIAN USERS ONLY**



UELL/NER

**JEPPESEN**

**EASA AIR OPS**

13 FEB 26

**10-9S**

**Eff 19 Feb**

**NERYUNGRI, RUSSIA**  
NERYUNGRI

**FOR RUSSIAN USERS ONLY**

STRAIGHT-IN RWY		A	B	C	D
08	ILS Z, Y or X	3016'(200') ① R550m R1200m	3016'(200') ① R550m R1200m	3016'(200') ① R550m R1200m	3016'(200') ① R550m R1200m
	ALS out				
	GLS	3016'(200') ① R550m R1200m	3016'(200') ① R550m R1200m	3016'(200') ① R550m R1200m	3016'(200') ① R550m R1200m
	ALS out				
	② LOC Z, Y or X	3120'(304') ①③ R700m R1400m	3120'(304') ①③ R700m R1400m	3120'(304') ①③ R700m R1400m	3120'(304') ①③ R700m R1400m
	ALS out				
	RNP LNAV/VNAV	3066'(250') ① R550m R1300m	3066'(250') ① R550m R1300m	3066'(250') ① R550m R1300m	3076'(260') ① R550m R1300m
	ALS out				
	② RNP LNAV	3150'(334') R800m R1500m	3150'(334') R800m R1500m	3150'(334') R800m R1500m	3150'(334') R800m R1500m
	ALS out				
② VOR	3240'(424') R1300m R1500m	3240'(424') R1300m R1500m	3240'(424') R1300m R2000m	3240'(424') R1300m R2000m	
ALS out					
② NDB	3130'(314') ①③ R700m R1400m	3130'(314') ①③ R700m R1400m	3130'(314') ①③ R700m R1400m	3130'(314') ①③ R700m R1400m	
ALS out					
26	GLS	2901'(200') R1000m R1200m	2901'(200') R1000m R1200m	2910'(209') R1000m R1200m	2920'(219') R1000m R1200m
	ALS out				
	RNP LNAV/VNAV	3061'(360') R1400m R1500m	3071'(370') R1500m R1500m	3081'(380') R1500m R1700m	3091'(390') R1600m R1800m
	ALS out				
	② RNP LNAV	3180'(479') R1500m R1500m	3180'(479') R1500m R1500m	3180'(479') R2000m R2200m	3180'(479') R2000m R2200m
	ALS out				
	② VOR	3180'(479') R1500m R1500m	3180'(479') R1500m R1500m	3180'(479') R2000m R2200m	3180'(479') R2000m R2200m
	ALS out				
② NDB	3180'(479') R1500m R1500m	3180'(479') R1500m R1500m	3180'(479') R2000m R2200m	3180'(479') R2000m R2200m	
ALS out					

① R750m when a Flight Director or Autopilot or HUDLS to DA is not used.

② Continuous Descent Final Approach.

③ R750m for CDFA 2D operations.

UJLL/NER



EASA AIR OPS

13 FEB 26

(10-9S1)

Eff 19 Feb

NERYUNGRI, RUSSIA  
NERYUNGRI

**FOR RUSSIAN USERS ONLY**

CIRCLE-TO-LAND	100 KT	135 KT	180 KT	205 KT
	<b>3230'</b> (414')	<b>3320'</b> (504')	<b>3450'</b> (634')	<b>3800'</b> (984')
After VOR 08	<b>3240'</b> (424')	<b>3320'</b> (504')	<b>3450'</b> (634')	<b>3800'</b> (984')
After RNP, VOR or NDB 26	<b>3300'</b> (484')	<b>3320'</b> (504')	<b>3450'</b> (634')	<b>3800'</b> (984')
	V1500m	V1600m	V2400m	V3600m

**TAKE-OFF**

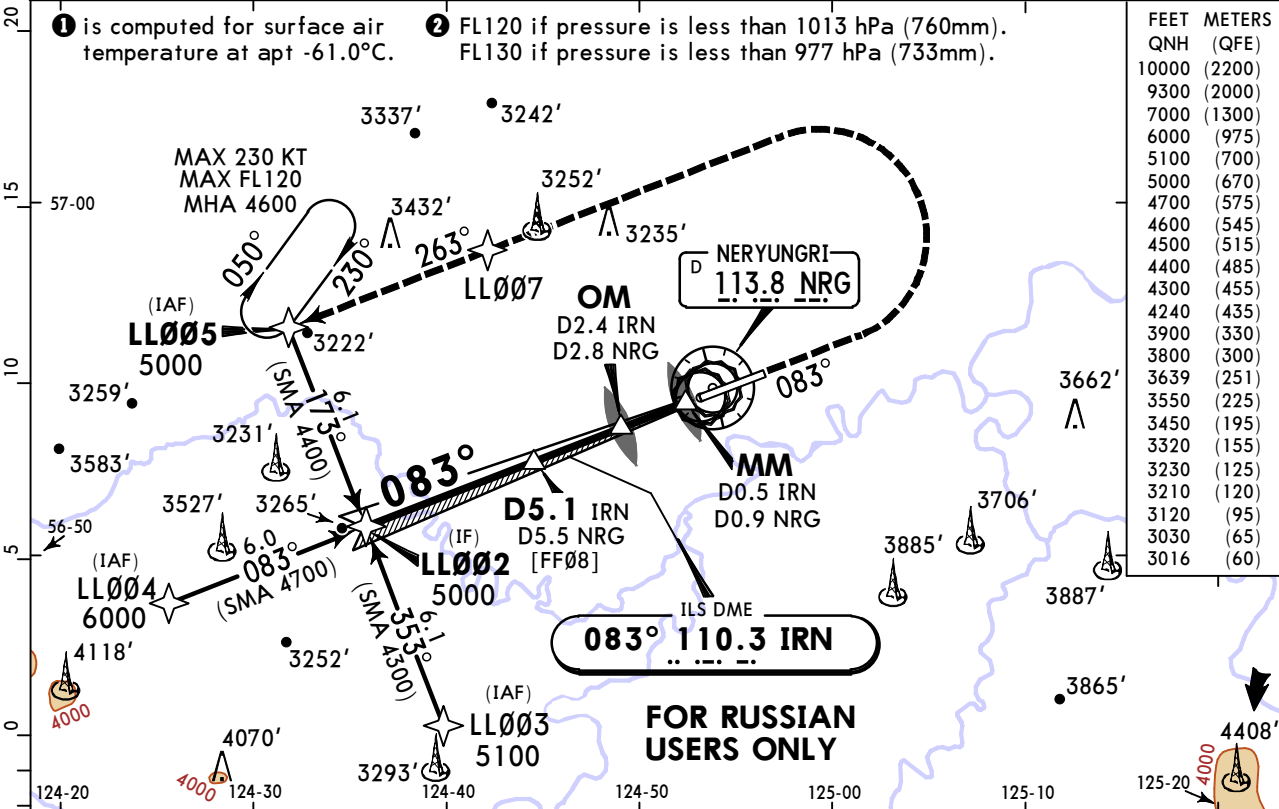
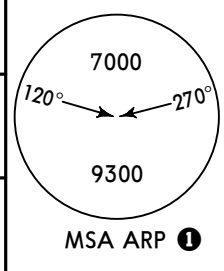
Low Visibility Procedures required		RCLM or RL	RL	Adequate Vis Ref	
Approval for Low Visibility Take-off required				DAY	NIGHT
RCLM & RL & RVR		DAY	NIGHT	DAY	NIGHT
DAY	NIGHT			DAY	NIGHT
R300m		R/V400m		R/V500m	NA

**UJELL/NER**  
**NERYUNGRI**

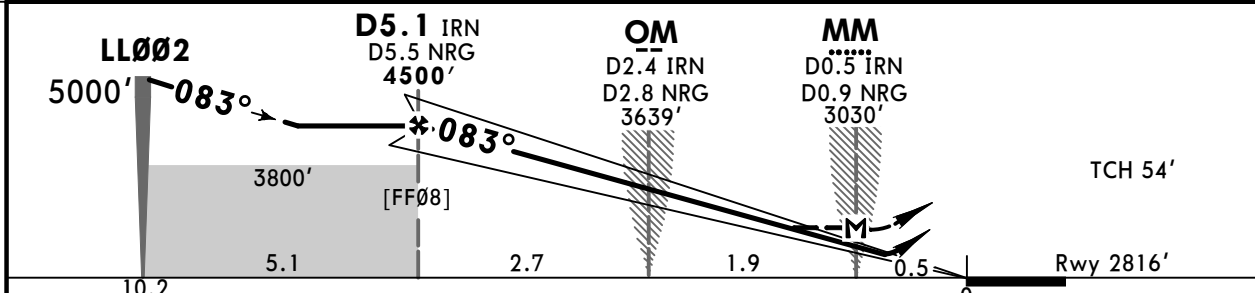
**JEPPESSEN**  
13 FEB 26  
Eff 19 Feb (11-1)

**NERYUNGRI, RUSSIA**  
**ILS Z or LOC Z Rwy 08**

ATIS <b>126.8</b>		NERYUNGRI Tower <b>118.3</b> Russian only		
LOC IRN <b>110.3</b>	Final Apch Crs <b>083°</b>	D5.1 IRN <b>4500'</b> (1684')	ILS DA(H) <b>3016'</b> (200')	Apt Elev 2816' Rwy 2816'
<b>MISSED APCH:</b> Climb on track 083° to 3800' or above, then turn LEFT to LL007 (MAX 240 KT), then to LL005 climbing to 5000' or above.				
Alt Set: hPa (MM on req)		Rwy Elev: 99 hPa	Trans level: FL110 ②	Trans alt: 10000'
RNAV 1 for initial and missed approach.		1. GNSS and DME required. 2. ILS DME reads zero at RWY 08 threshold.		



LOC (GS out)	DIST to THR/IRN DME	4.3	3.2	2.2	1.1
	NRG DME	4.8	3.7	2.6	1.5
	ALTITUDE	4240'	3900'	3550'	3210'



Gnd speed-Kts	70	90	100	120	140	160	HIALS PAPI	MIN 3800' on 083°	
ILS GS or LOC Descent Angle	3.00°	372	478	531	637	743			849
MAP at MM/D0.5 IRN/D0.9 NRG									

PANS OPS	<b>Std</b> STRAIGHT-IN LANDING				CIRCLE-TO-LAND	
	ILS DA(H) <b>3016'</b> (200')		LOC (GS out) CDFA ② DA/MDA(H) <b>3120'</b> (304')			
	ALS out		ALS out		Max KT	MDA(H)
	A				100	<b>3230'</b> (414') V1500m
	B	<b>1</b> R550m	R1200m	R750m	R1400m	135 <b>3320'</b> (504') V1600m
C					180 <b>3450'</b> (634') V2400m	
D					205 <b>3800'</b> (984') V3600m	

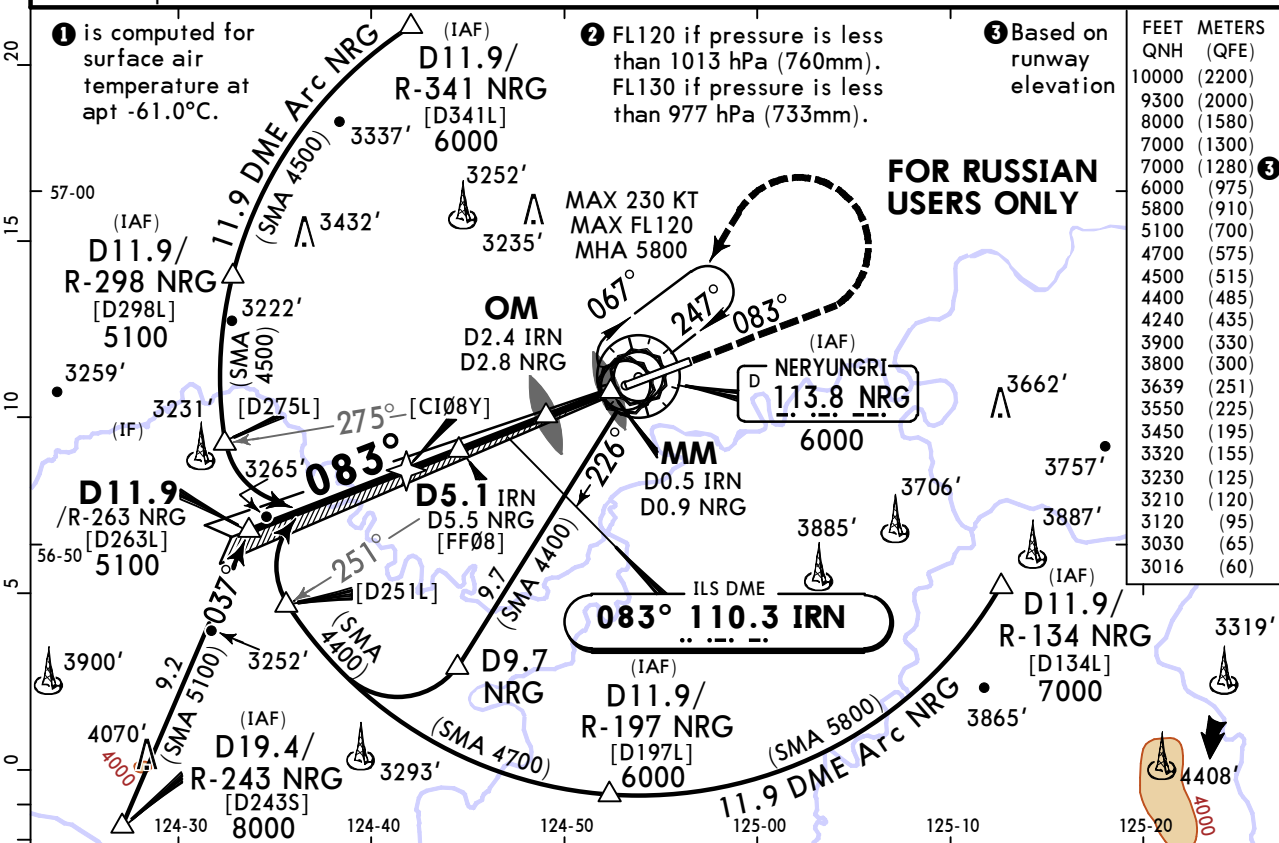
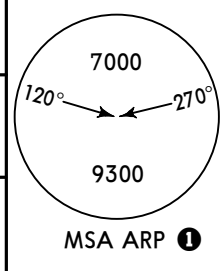
① R750m when a Flight Director or Pilot or HUD to DA is not used.  
② VNAV DA(H) in lieu of MDA(H) depends on operator policy.  
CHANGES: Apt name, call sign. © JEPPESSEN, 2024, 2026. ALL RIGHTS RESERVED.

**UJELL/NER**  
**NERYUNGRI**

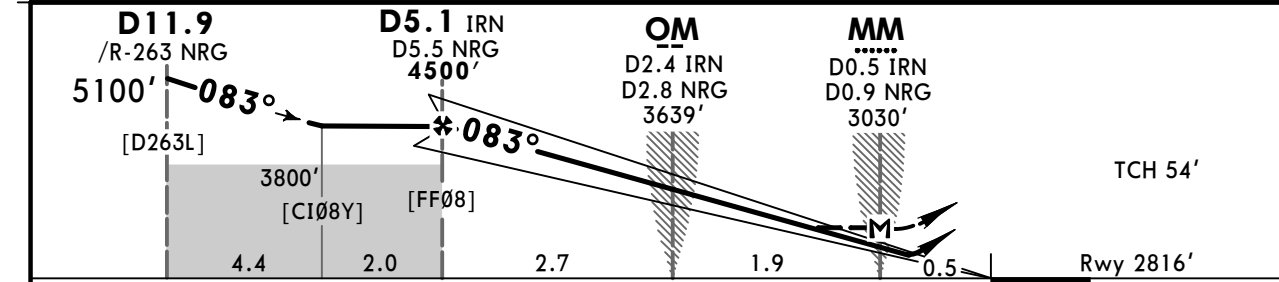
**JEPPESEN**  
13 FEB 26  
Eff 19 Feb **(11-2)**

**NERYUNGRI, RUSSIA**  
**ILS Y or LOC Y Rwy 08**

ATIS <b>126.8</b>		NERYUNGRI Tower <b>118.3</b> Russian only		
LOC IRN <b>110.3</b>	Final Apch Crs <b>083°</b>	D5.1 IRN <b>4500'</b> (1684')	ILS DA(H) <b>3016'</b> (200')	Apt Elev 2816' Rwy 2816'
<b>MISSED APCH:</b> Climb on track 083° to 3800' or above, then turn LEFT (MAX 225 KT) to VOR climbing to 6000' or above, then according chart.				
Alt Set: hPa (MM on req)		Rwy Elev: 99 hPa	Trans level: FL110 <b>2</b>	Trans alt: 10000'
1. DME required. 2. ILS DME reads zero at RWY 08 threshold.				



LOC (GS out)	DIST to THR/IRN DME	4.3	3.2	2.2	1.1
	NRG DME	4.8	3.7	2.6	1.5
	ALTITUDE	4240'	3900'	3550'	3210'



Gnd speed-Kts	70	90	100	120	140	160	HIALS PAPI	MIN <b>3800'</b> on <b>083°</b>
ILS GS or	3.00°	372	478	531	637	849		
LOC Descent Angle								
MAP at MM/D0.5 IRN/D0.9 NRG								

	STRAIGHT-IN LANDING		CIRCLE-TO-LAND	
	ILS	LOC (GS out)	LOC (GS out)	CIRCLE-TO-LAND
	DA(H) <b>3016'</b> (200')	CDFA <b>3120'</b> (304')		
	ALS out	<b>2</b> DA/MDA(H)	ALS out	
A				Max KT 100 <b>3230'</b> (414') V1500m
B	<b>1</b> R550m	R1200m	R750m	135 <b>3320'</b> (504') V1600m
C			R1400m	180 <b>3450'</b> (634') V2400m
D				205 <b>3800'</b> (984') V3600m

**1** R750m when a Flight Director or Autopilot or HUD to DA is not used.  
**2** VNAV DA(H) in lieu of MDA(H) depends on operator policy.

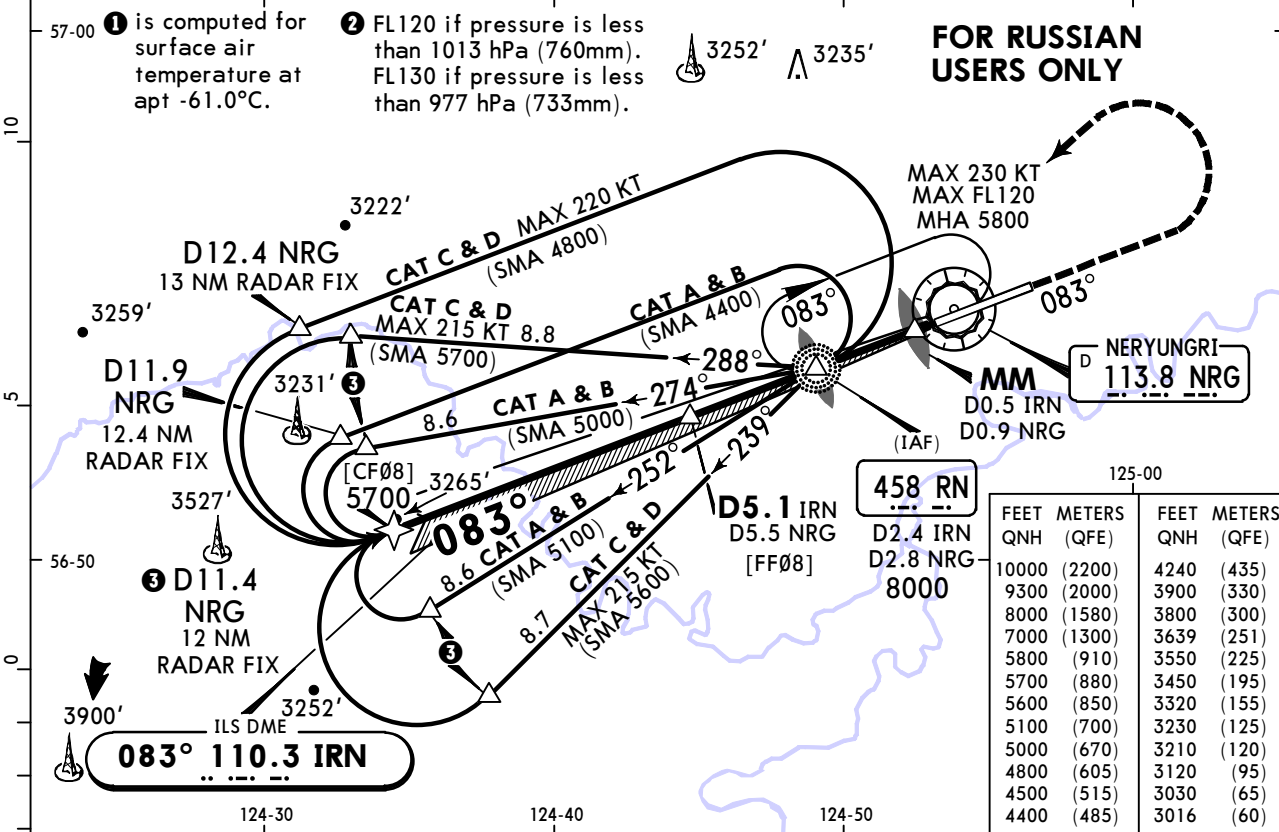
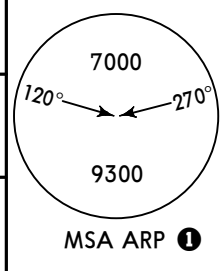
CHANGES: Apt name, call sign. © JEPPESEN, 2024, 2026. ALL RIGHTS RESERVED.

UPELL/NER  
NERYUNGRI

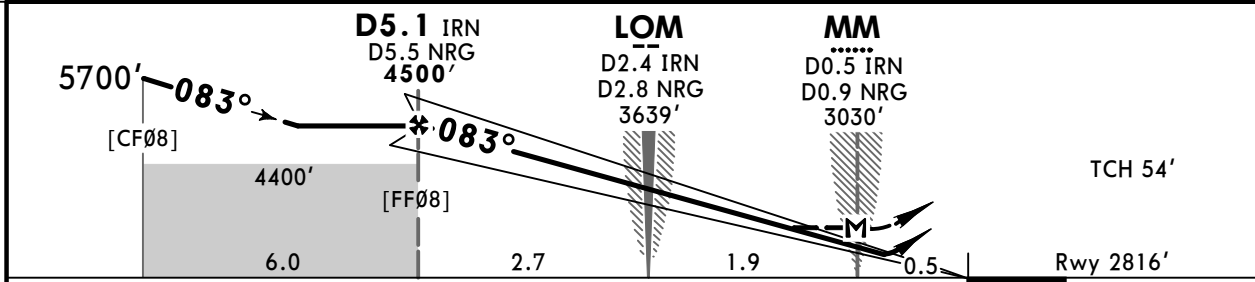
**JEPPESEN**  
13 FEB 26  
Eff 19 Feb (11-3)

NERYUNGRI, RUSSIA  
ILS X or LOC X Rwy 08

BRIEFING STRIP™	ATIS <b>126.8</b>	NERYUNGRI Tower <b>118.3</b> Russian only			
	LOC IRN <b>110.3</b>	Final Apch Crs <b>083°</b>	D5.1 IRN <b>4500'</b> (1684')	ILS DA(H) <b>3016'</b> (200')	Apt Elev 2816' Rwy 2816'
MISSED APCH: Climb on track 083° to 3800' or above, then turn LEFT (MAX 225 KT) to NDB climbing to 5800' or above, then according chart.					
Alt Set: hPa (MM on req)		Rwy Elev: 99 hPa		Trans level: FL110 ②	
1. DME or radar required. 2. ILS DME reads zero at RWY 08 threshold.					



LOC (GS out)	DIST to THR/IRN DME	4.3	3.2	2.2	1.1
	NRG DME	4.8	3.7	2.6	1.5
	ALTITUDE	4240'	3900'	3550'	3210'



Gnd speed-Kts	70	90	100	120	140	160	HIALS PAPI MIN 3800' on 083°	
ILS GS or	3.00°	372	478	531	637	743		849
LOC Descent Angle								

	STRAIGHT-IN LANDING		CIRCLE-TO-LAND	
	ILS	LOC (GS out)	ILS	LOC (GS out)
	DA(H) <b>3016'</b> (200')	CDFA <b>3120'</b> (304')	DA(H) <b>3230'</b> (414')	MDA(H) <b>V1500m</b>
	ALS out	ALS out	ALS out	ALS out
A	<b>R550m</b>	R1200m	R750m	R1400m
B				Max 100 <b>3230'</b> (414') V1500m
C				135 <b>3320'</b> (504') V1600m
D				180 <b>3450'</b> (634') V2400m
				205 <b>3800'</b> (984') V3600m

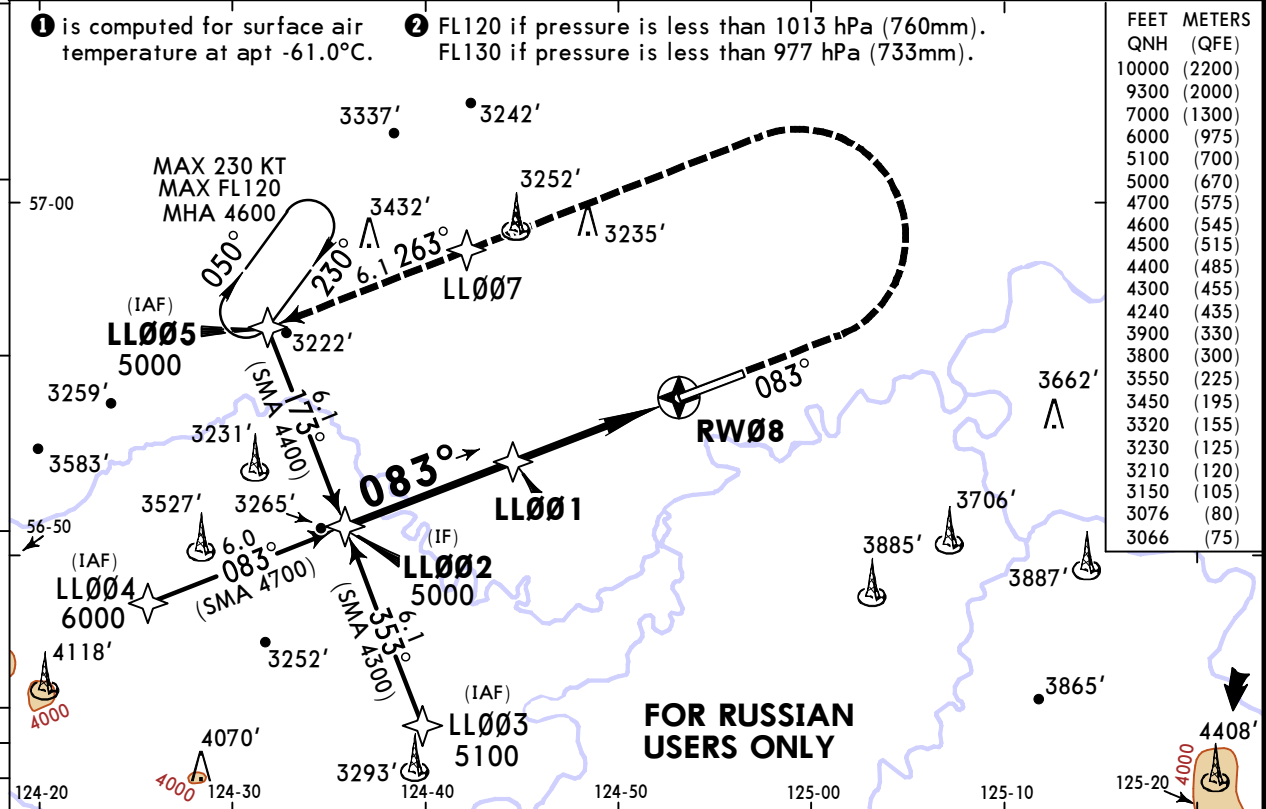
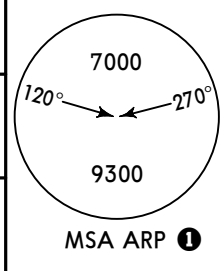
① R750m when a Flight Director or Autopilot or HUD to DA is not used.  
 ② VNAV DA(H) in lieu of MDA(H) depends on operator policy.  
 CHANGES: Apt name, call sign. © JEPPESEN, 2024, 2026. ALL RIGHTS RESERVED.

**UPELL/NER  
NERYUNGRI**

**JEPPESEN**  
13 FEB 26 (12-1) Eff 19 Feb

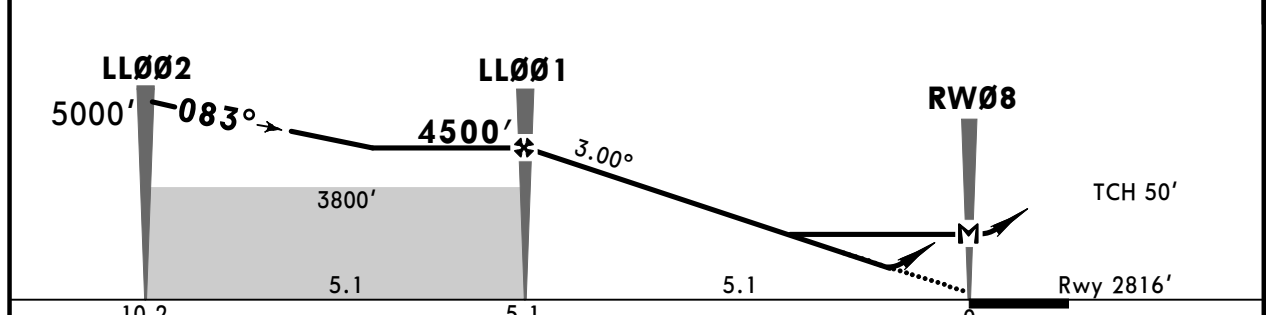
**NERYUNGRI, RUSSIA  
RNP Rwy 08**

ATIS <b>126.8</b>		NERYUNGRI Tower <b>118.3</b> Russian only		
RNAV	Final Apch Crs <b>083°</b>	LL001 <b>4500'</b> (1684')	LNAV/VNAV DA(H) Refer to Minimums	Apt Elev 2816'  Rwy 2816'
<b>MISSED APCH:</b> Climb on track 083° to 3800' or above, then turn LEFT to LL007 (MAX 240 KT), then to LL005 climbing to 5000' or above.				
Alt Set: hPa (MM on req)		Rwy Elev: 99 hPa	Trans level: FL110 ②	Trans alt: 10000'
RNP apch.	1. GNSS required. 2. Baro-VNAV not authorized below -35°C. 3. VPA exceeds 3.5° above +49°C.			



FEET	METERS
10000	(2200)
9300	(2000)
7000	(1300)
6000	(975)
5100	(700)
5000	(670)
4700	(575)
4600	(545)
4500	(515)
4400	(485)
4300	(455)
4240	(435)
3900	(330)
3800	(300)
3550	(225)
3450	(195)
3320	(155)
3230	(125)
3210	(120)
3150	(105)
3076	(80)
3066	(75)

DIST to RW08	4.3	3.2	2.2	1.1
ALTITUDE	4240'	3900'	3550'	3210'



Gnd speed-Kts	70	90	100	120	140	160	HIALS PAPI MIN 3800' on 083°
Glide Path Angle	3.00°	372	478	531	637	743	
MAP at RW08							

PANS OPS	STRAIGHT-IN LANDING				CIRCLE-TO-LAND	
	LNAV/VNAV		LNAV		CIRCLE-TO-LAND	
	DA(H)	ABC: 3066' (250') D: 3076' (260')	DA/MDA(H)	CDFA	3150' (334')	
		ALS out		ALS out		
A					Max KT	MDA(H)
B					100	3230' (414') V1500m
C	R750m	R1300m	R800m	R1500m	135	3320' (504') V1600m
D					180	3450' (634') V2400m
					205	3800' (984') V3600m

① VNAV DA(H) in lieu of MDA(H) depends on operator policy.

**U/LL/NER**  
**NERYUNGRI**



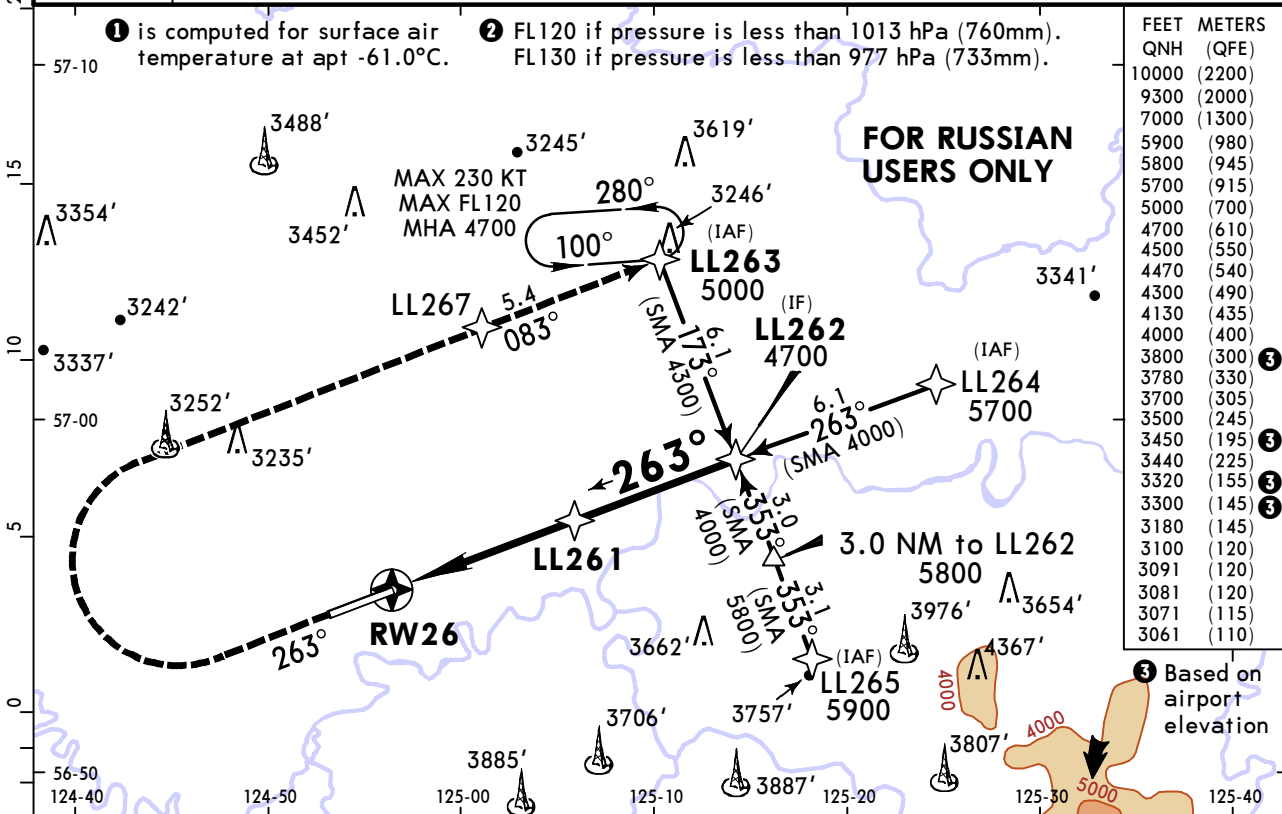
13 FEB 26

12-2

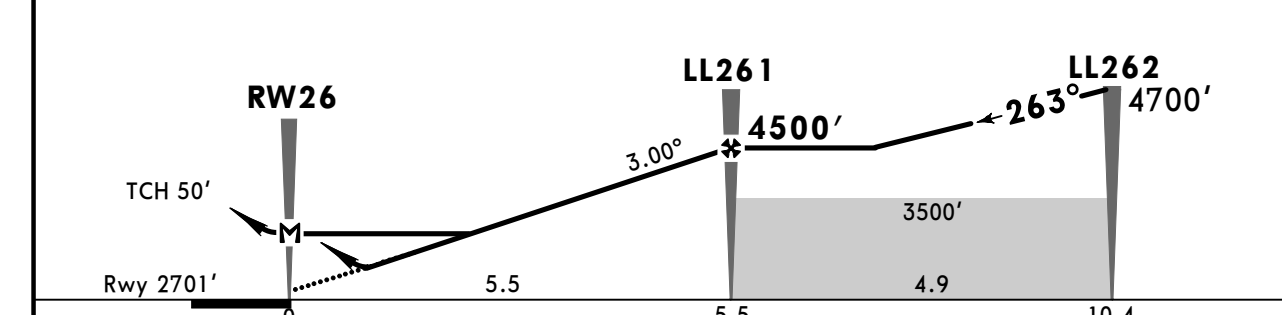
Eff 19 Feb

**NERYUNGRI, RUSSIA**  
**RNP Rwy 26**

ATIS <b>126.8</b>		NERYUNGRI Tower <b>118.3</b> Russian only			<p>7000 120° ← → 270° 9300 MSA ARP ①</p>
RNAV	Final Apch Crs <b>263°</b>	LL261 <b>4500'</b> (1799')	LNAV/VNAV DA(H) Refer to Minimums	Apt Elev 2816' Rwy 2701'	
<b>MISSED APCH: Climb on track 263° to 3700' or above, then turn RIGHT to LL267 (MAX 240 KT), then to LL263 climbing to 5000' or above.</b>					
Alt Set: hPa (MM on req)		Rwy Elev: 95 hPa	Trans level: FL110 ②	Trans alt: 10000'	
RNP apch.	1. GNSS required. 2. Baro-VNAV not authorized below -35°C. 3. VPA exceeds 3.5° above +49°C.				



DIST to RW26	1.1	2.2	3.2	4.3	5.4
ALTITUDE	3100'	3440'	3780'	4130'	4470'



MAP at RW26							ALS	MIN	263°
							PAPI	3700'	on

PANS OPS	STRAIGHT-IN LANDING				CIRCLE-TO-LAND		
	LNAV/VNAV		LNAV CDFA		Max KT	MDA(H)	
A	R1400m	ALS out	ALS out	R1500m		100	3300' (484') V1500m
B	R1500m	R1500m	R1500m	R1500m		135	3320' (504') V1600m
C	R1500m			R1700m	R2000m		180
D	R1600m	R1800m	R2000m	R2200m	205	3800' (984') V3600m	

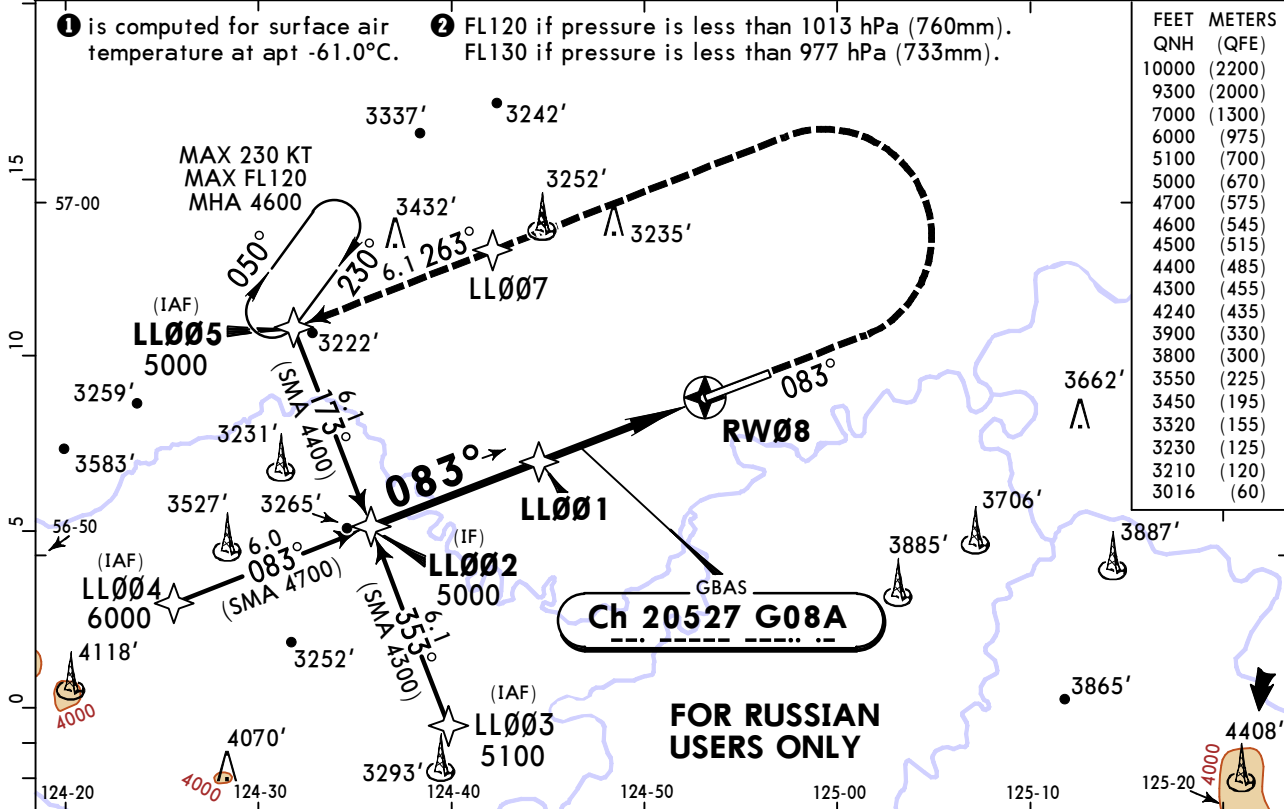
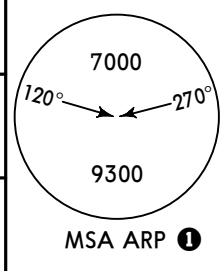
① VNAV DA(H) in lieu of MDA(H) depends on operator policy.

**UJELL/NER**  
**NERYUNGRI**

**JEPPESEN**  
13 FEB 26 **(12-40)** **Eff 19 Feb**

**NERYUNGRI, RUSSIA**  
**GLS Rwy 08**

ATIS <b>126.8</b>		NERYUNGRI Tower <b>118.3</b> Russian only		
GBAS <b>Ch 20527</b> G08A	Final Apch Crs <b>083°</b>	LL001 <b>4500'</b> (1684')	GLS DA(H) <b>3016'</b> (200')	Apt Elev 2816' Rwy 2816'
<b>MISSED APCH:</b> Climb on track 083° to 3800' or above, then turn LEFT to LL007 (MAX 240 KT), then to LL005 climbing to 5000' or above.				
Alt Set: hPa (MM on req)		Rwy Elev: 99 hPa	Trans level: FL110 ②	Trans alt: 10000'
RNAV 1 for initial and missed approach.		GNSS required.		

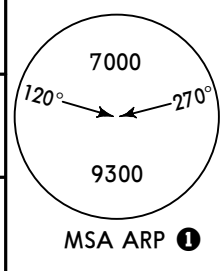


UPELL/NER  
NERYUNGRI

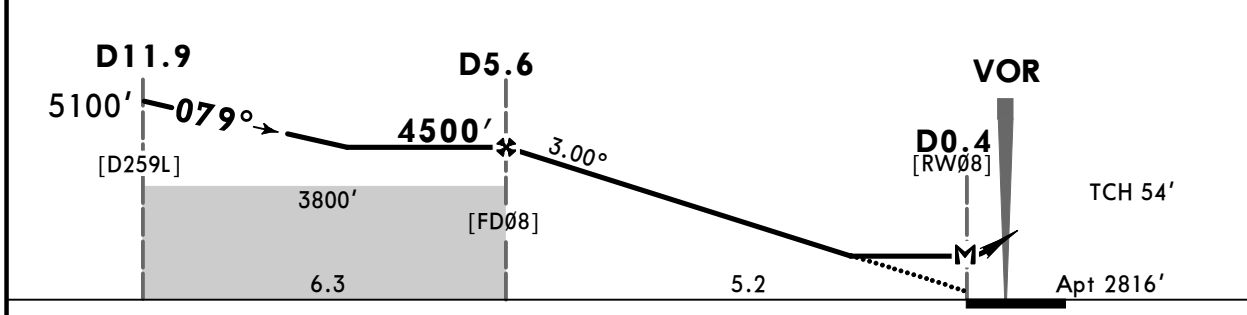
**JEPPESEN**  
13 FEB 26 (13-1) Eff 19 Feb

NERYUNGRI, RUSSIA  
VOR Rwy 08

ATIS <b>126.8</b>		NERYUNGRI Tower <b>118.3</b> Russian only		
VOR NRG <b>113.8</b>	Final Apch Crs <b>079°</b>	D5.6 <b>4500'</b> (1684')	DA/MDA(H) <b>3240'</b> (424')	Apt Elev 2816'
<b>MISSED APCH:</b> Climb on track 079° to 4000' or above, then turn LEFT (MAX 225 KT) to VOR climbing to 6000' or above.				
Alt Set: hPa (MM on req)		Apt Elev: 99 hPa	Trans level: FL110 ②	Trans alt: 10000'
1. DME required. 2. Final approach track offset by 4° from RWY centerline.				



NRG DME	4.8	3.7	2.6	1.5
ALTITUDE	4240'	3900'	3550'	3210'



Gnd speed-Kts	70	90	100	120	140	160	HIALS PAPI	MIN 4000' on 079°
Descent Angle	3.00°	372	478	531	637	849		
MAP at D0.4								

PANS OPS	<b>Std</b> STRAIGHT-IN LANDING		CIRCLE-TO-LAND	
	CDFA			
	DA/MDA(H) <b>3240'</b> (424')			
	ALS out		Max KT	MDA(H)
	A	R1300m	R1500m	100 <b>3240'</b> (424') V1500m
B	R2000m		135 <b>3320'</b> (504') V1600m	
C			180 <b>3450'</b> (634') V2400m	
D			205 <b>3800'</b> (984') V3600m	

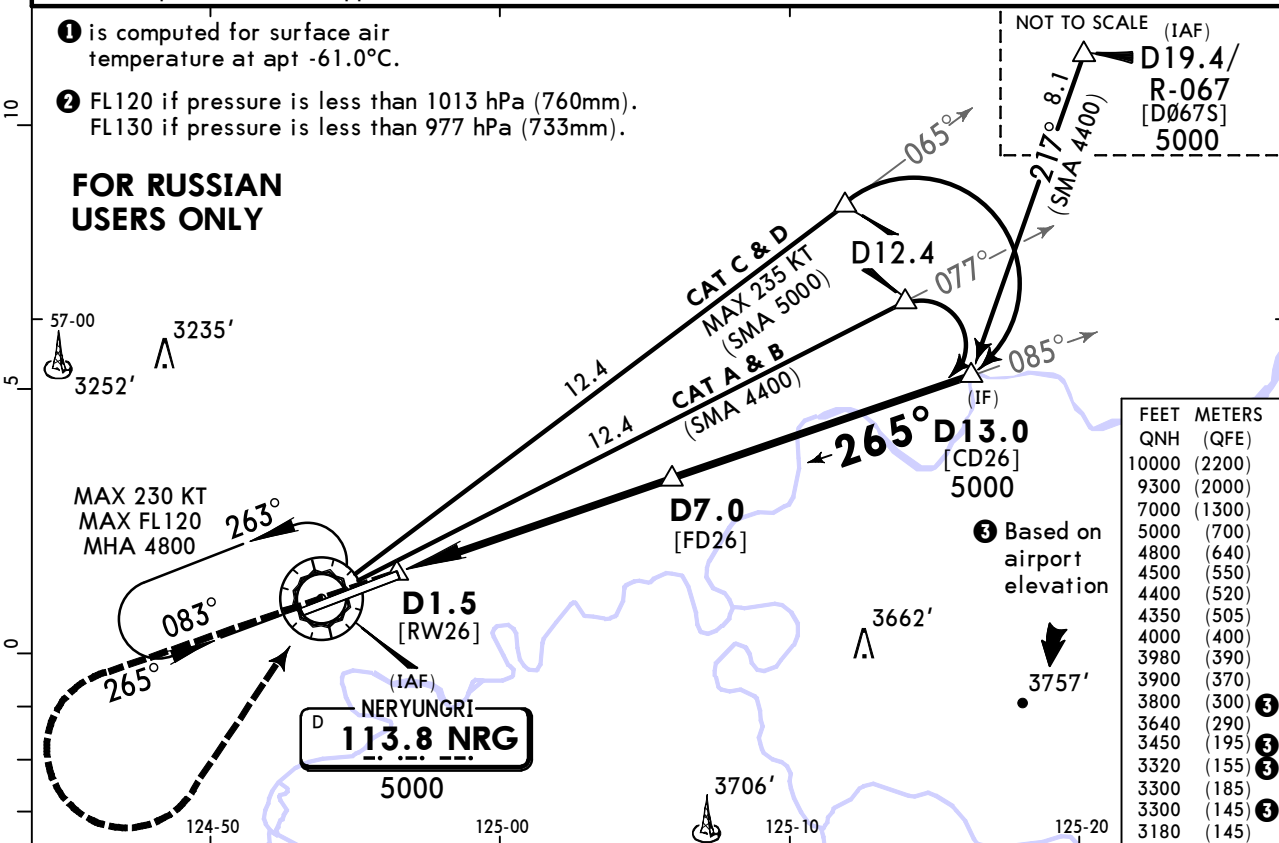
① VNAV DA(H) in lieu of MDA(H) depends on operator policy.  
CHANGES: Apt name, call sign. © JEPPESEN, 2024, 2026. ALL RIGHTS RESERVED.

# UPELL/NER NERYUNGRI

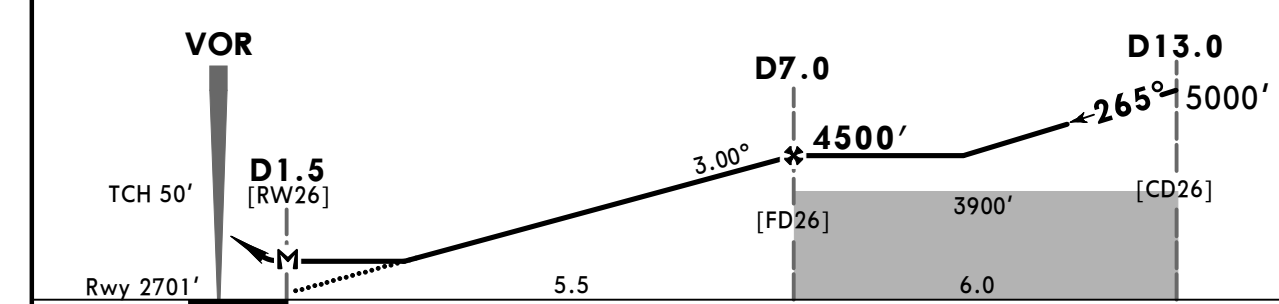
**JEPPESSEN**  
13 FEB 26 **(13-2)** Eff 19 Feb

# NERYUNGRI, RUSSIA VOR Rwy 26

ATIS <b>126.8</b>		NERYUNGRI Tower <b>118.3</b> Russian only			
VOR NRG <b>113.8</b>	Final Apch Crs <b>265°</b>	<b>D7.0</b> 4500' (1799')	DA/MDA(H) <b>3180'</b> (479')	Apt Elev 2816' Rwy 2701'	
<b>MISSED APCH:</b> Climb on track 265° to 4000' or above, then turn LEFT (MAX 225 KT) to VOR climbing to 5000' or above, then according chart.					<b>MSA ARP ①</b>
Alt Set: hPa (MM on req)		Rwy Elev: 95 hPa	Trans level: FL110 ②	Trans alt: 10000'	
1. DME required. 2. Final approach offset 2° from RWY centerline.					



NRG DME	3.2	4.3	5.4	6.5
ALTITUDE	3300'	3640'	3980'	4350'



Gnd speed-Kts	70	90	100	120	140	160	ALS PAPI MIN 4000' on 265°
Descent Angle	3.00°	372	478	531	637	849	
MAP at D1.5							

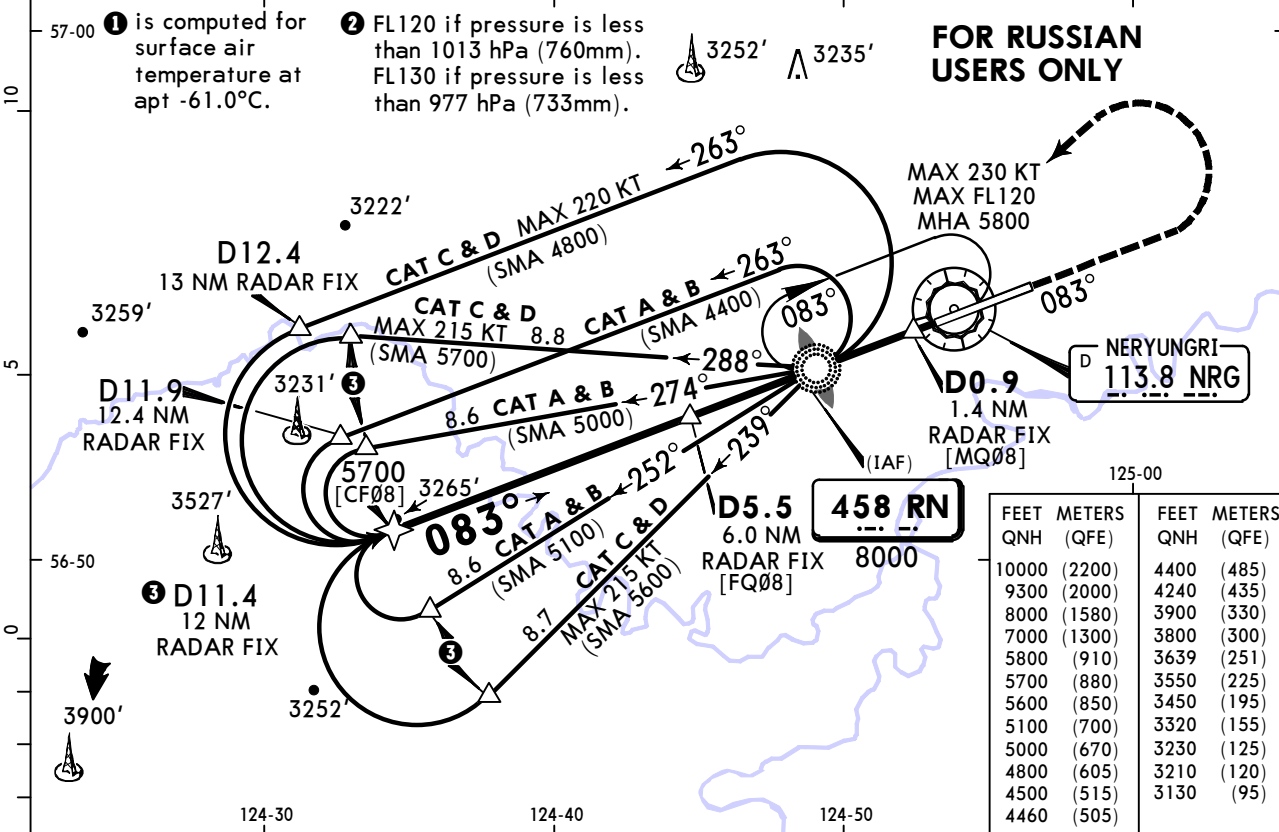
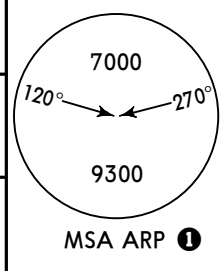
PANS OPS	<b>Std</b>	STRAIGHT-IN LANDING		CIRCLE-TO-LAND		
		CDFA				
		① DA/MDA(H) <b>3180'</b> (479')				
		ALS out				Max KT
	A	R1500m				100
B	R1500m				135	
C	R2000m		R2200m		180	
D	R2000m		R2200m		205	
	① VNAV DA(H) in lieu of MDA(H) depends on operator policy.					

# U/ELL/NER NERYUNGRI

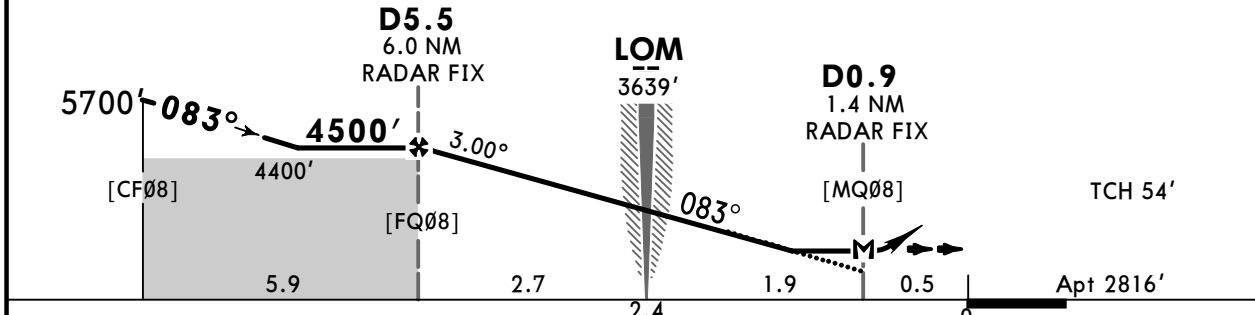
**JEPPESEN**  
13 FEB 26 **(16-1)** Eff 19 Feb

# NERYUNGRI, RUSSIA NDB Rwy 08

ATIS <b>126.8</b>			NERYUNGRI Tower <b>118.3</b> Russian only		
NDB RN <b>458</b>	Final Apch Crs <b>083°</b>	D5.5 <b>4500'</b> (1684')	DA/MDA(H) <b>3130'</b> (314')	Apt Elev 2816'	
<b>MISSED APCH:</b> Climb on track 083° to 3800' or above, then turn LEFT (MAX 225 KT) to NDB climbing to 5800' or above, then according chart.					
Alt Set: hPa (MM on req)		Apt Elev: 99 hPa		Trans level: FL110 ②	
1. DME or radar required. 2. TAR reads zero at ARP.					



NRG DME	5.4	4.8	3.7	2.6	1.5
ALTITUDE	4460'	4240'	3900'	3550'	3210'



Gnd speed-Kts	70	90	100	120	140	160	HIALS PAPI	MIN <b>3800'</b> on <b>083°</b>
Descent Angle	3.00°	372	478	531	637	743		
MAP at D0.9 NRG/1.4 NM RADAR FIX Timing not authorized for defining the MAP.								

PANS OPS	<b>Std</b> STRAIGHT-IN LANDING CDFA DA/MDA(H) <b>3130'</b> (314')		CIRCLE-TO-LAND	
	ALS out		Max	MDA(H)
	A	R750m	100	<b>3230'</b> (414') V1500m
	B		135	<b>3320'</b> (504') V1600m
	C		180	<b>3450'</b> (634') V2400m
D	205		<b>3800'</b> (984') V3600m	
VNAV DA(H) in lieu of MDA(H) depends on operator policy.				

**U/ELL/NER**  
**NERYUNGRI**

**JEPPESEN**  
13 FEB 26 **(16-2)** **Eff 19 Feb**

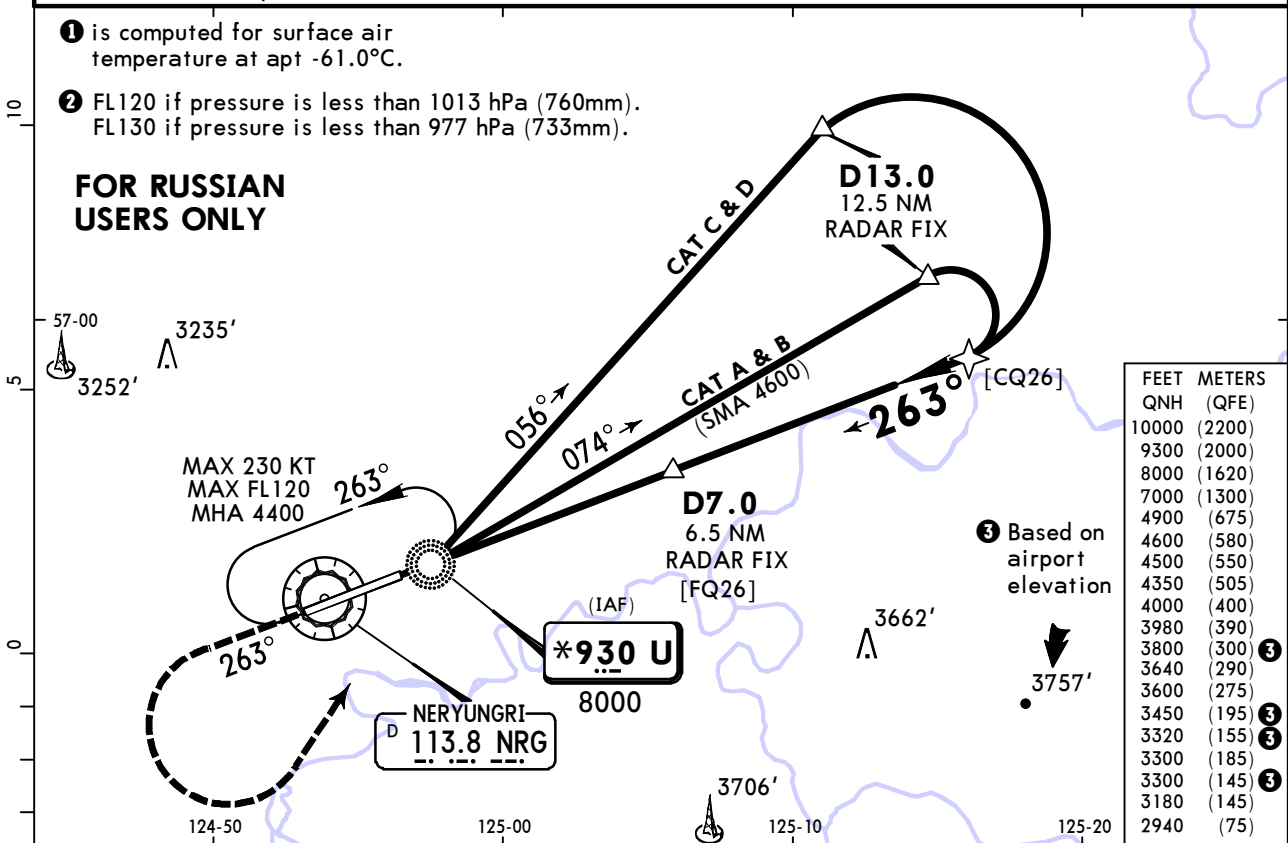
**NERYUNGRI, RUSSIA**  
**NDB Rwy 26**

ATIS <b>126.8</b>		NERYUNGRI Tower <b>118.3</b> Russian only			<p>7000 120° ← → 270° 9300 MSA ARP ①</p>
NDB U <b>*930</b>	Final Apch Crs <b>263°</b>	<b>D7.0</b> 4500' (1799')	DA/MDA(H) <b>3180'</b> (479')	Apt Elev 2816' Rwy 2701'	
<b>MISSED APCH:</b> Climb on track 263° to 4000' or above, then turn LEFT (MAX 225 KT) to NDB climbing to 4900' or above, then according chart.					
Alt Set: hPa (MM on req)		Rwy Elev: 95 hPa	Trans level: FL110 ②	Trans alt: 10000'	
1. DME or radar required. 2. TAR reads zero at ARP.					

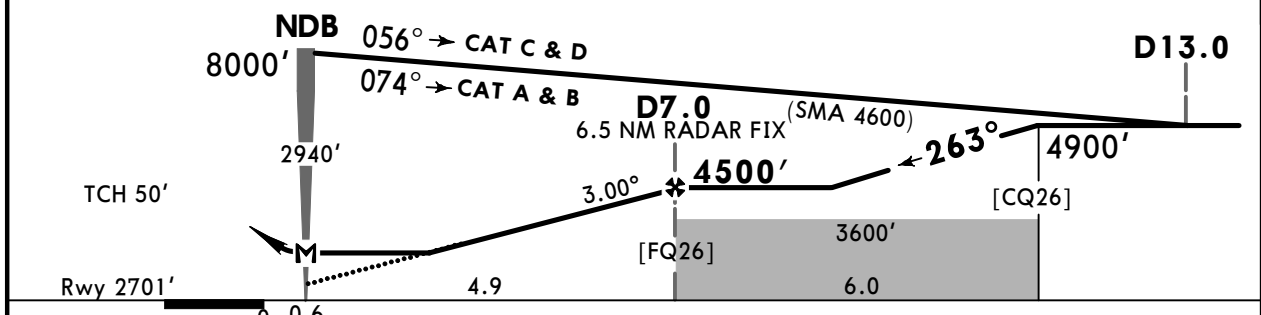
① is computed for surface air temperature at apt -61.0°C.

② FL120 if pressure is less than 1013 hPa (760mm).  
FL130 if pressure is less than 977 hPa (733mm).

**FOR RUSSIAN USERS ONLY**



NRG DME	3.2	4.3	5.4	6.5
ALTITUDE	3300'	3640'	3980'	4350'



Gnd speed-Kts	70	90	100	120	140	160	
Descent Angle	3.00°	372	478	531	637	849	
MAP at NDB							

PANS OPS	<b>Std</b> STRAIGHT-IN LANDING		CIRCLE-TO-LAND	
	CDFA			
	① DA/MDA(H) <b>3180'</b> (479')			
	ALS out		Max	MDA(H)
	A	R1500m		100
B	R1500m		135	<b>3320'</b> (504') V1600m
C	R2000m	R2200m	180	<b>3450'</b> (634') V2400m
D	R2000m	R2200m	205	<b>3800'</b> (984') V3600m

① VNAV DA(H) in lieu of MDA(H) depends on operator policy.

## Chart changes since cycle 07-2026

ADD = added chart, REV = revised chart, DEL = deleted chart.

ACT	PROCEDURE IDENT	INDEX	REV DATE	EFF DATE
<b>NERYUNGRI, (CHULMAN - UELL)</b>				

## TERMINAL CHART CHANGE NOTICES

No Chart Change Notices for Airport UELL