

List of pages in this Trip Kit

Trip Kit Index

Airport Information For UHMD

Terminal Charts For UHMD

Revision Letter For Cycle 08-2026

Change Notices

Notebook

General Information

Location: PROVIDENIYA BAY RUS
ICAO/IATA: UHMD / PVS
Lat/Long: N64° 22.68', W173° 14.60'
Elevation: 71 ft

Airport Use: Public
Daylight Savings: Not Observed
UTC Conversion: -12:00 = UTC
Magnetic Variation: 8.0° E

Fuel Types: Jet A-1
Customs: No
Airport Type: IFR
Landing Fee: Yes
Control Tower: Yes
Jet Start Unit: No
LLWS Alert: No
Beacon: No

Sunrise: 1449 Z
Sunset: 0810 Z

Runway Information

Runway: 01
Length x Width: 5249 ft x 171 ft
Surface Type: grass
TDZ-Elev: 22 ft
Stopway: 656 ft

Runway: 19
Length x Width: 5249 ft x 171 ft
Surface Type: grass
TDZ-Elev: 62 ft
Stopway: 656 ft

Communication Information

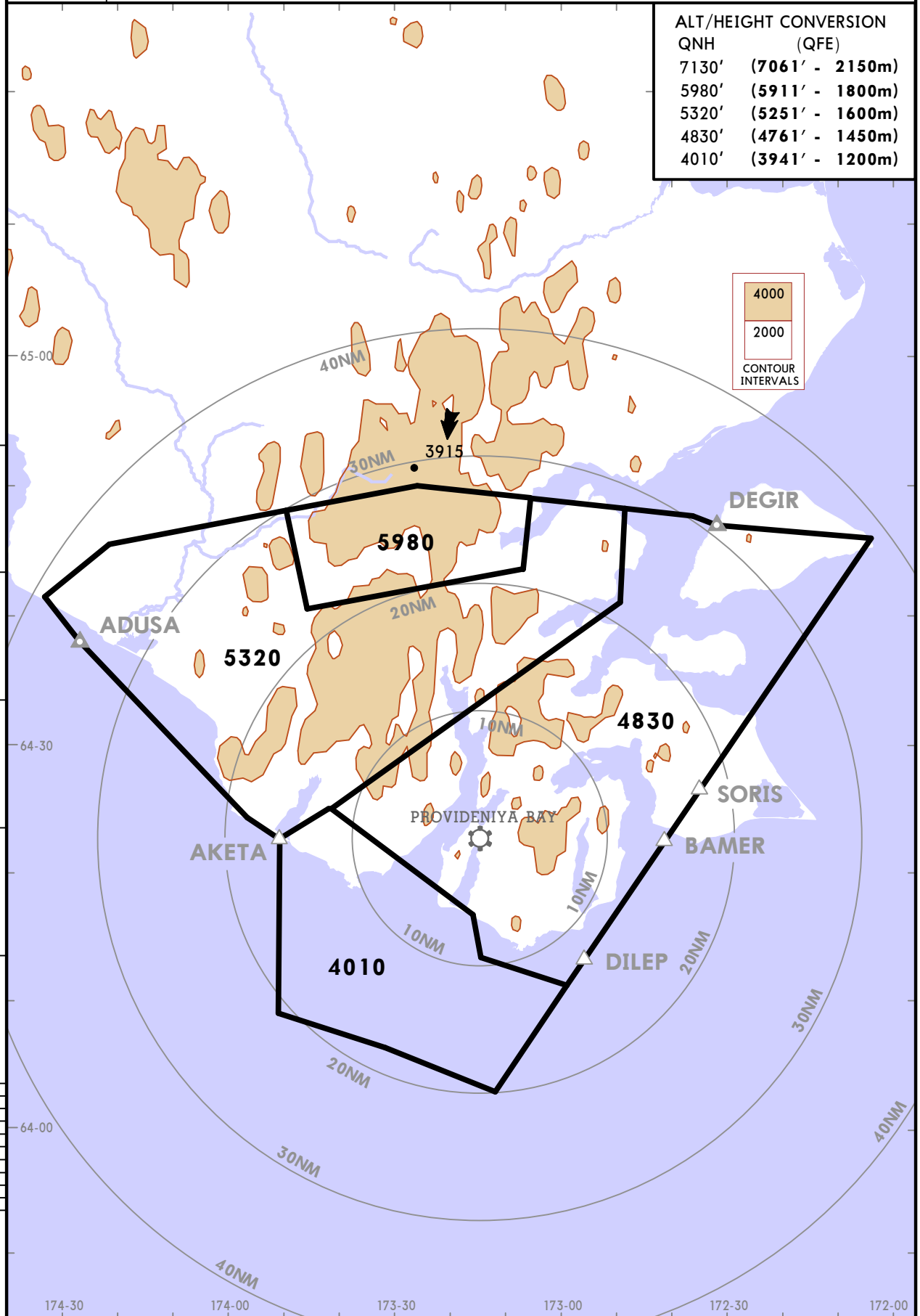
Provideniya Bay Tower: 119.300

UHMD/PVS PROVIDENIYA BAY, RUSSIA

19 JAN 24 10-1R Eff 25 Jan RADAR MINIMUM ALTITUDE

Apt Elev 69	Alt Set: MM (hPa on request) QNH on request (QFE) Trans level: FL090 FL100 if pressure is less than 760 mm (1013 hPa) FL110 if pressure is less than 733 mm (977 hPa) Trans alt: 7130 (7061) 1. This chart may only be used for cross-checking of altitudes assigned while under RADAR control. 2. When vectoring is carried out in low-temperature conditions, minimum altitudes must be corrected by altimeter temperature correction.
-----------------------	---

ALT/HEIGHT CONVERSION	
QNH	(QFE)
7130'	(7061' - 2150m)
5980'	(5911' - 1800m)
5320'	(5251' - 1600m)
4830'	(4761' - 1450m)
4010'	(3941' - 1200m)



UHMD/PVS PROVIDENIYA BAY

25 OCT 24 **10-2A** Eff 31 Oct

JEPPESEN PROVIDENIYA BAY, RUSSIA

RNAV STAR

Apt Elev 69	Alt Set: MM (hPa on request) QNH on request (QFE)
	Trans level: FL090 FL100 if pressure is less than 760 mm (1013 hPa) FL110 if pressure is less than 733 mm (977 hPa)
RNAV 1 GNSS required	

**BAMER 1G [BAME1G], DEGIR 1G [DEGI1G]
DILEP 1G [DILE1G], SORIS 1G [SORI1G]
RNAV ARRIVALS (RWY 20)**

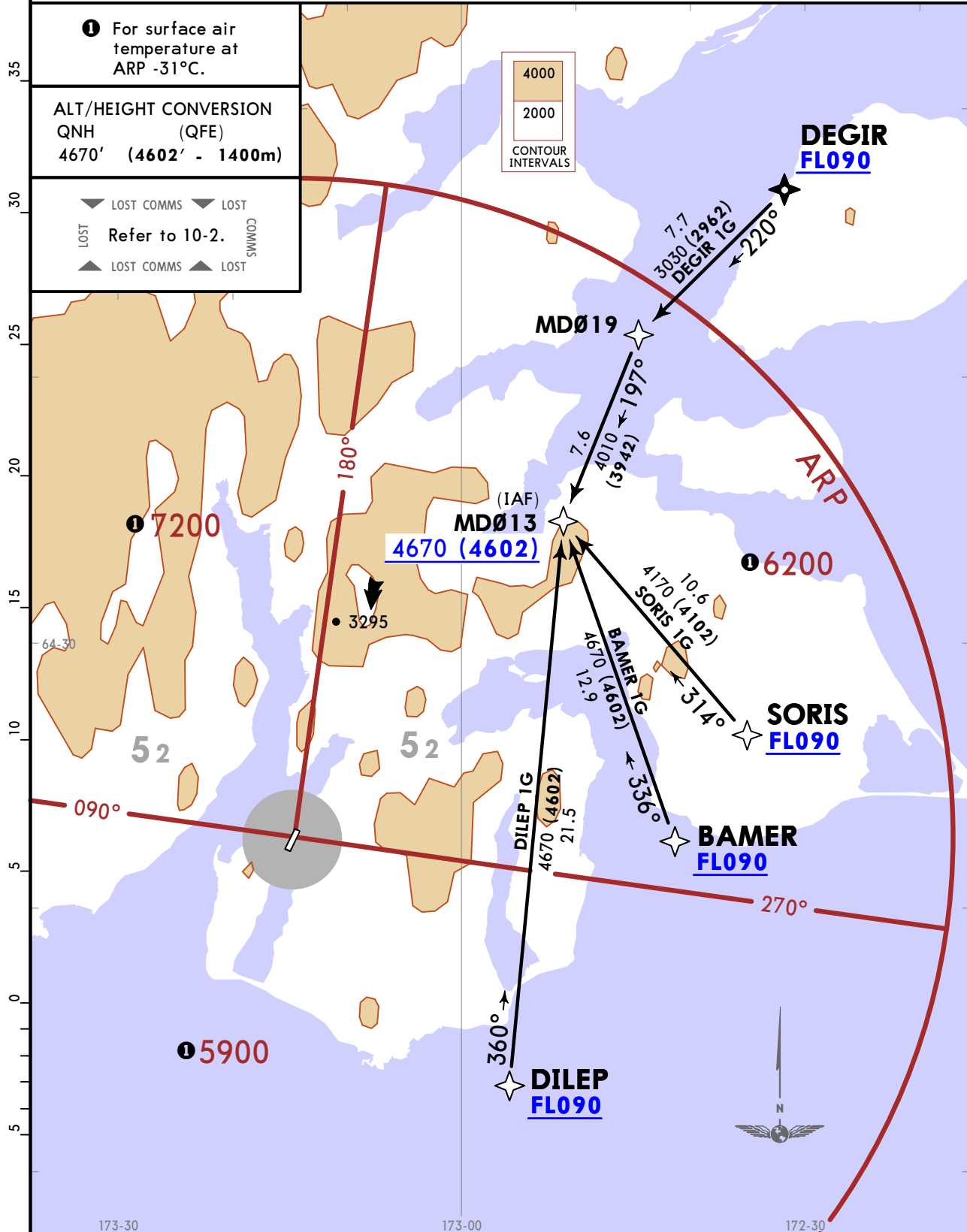
CAT A & B

1 For surface air temperature at ARP -31°C.

ALT/HEIGHT CONVERSION
QNH (QFE)
4670' (4602' - 1400m)

LOST COMMS LOST
LOST Refer to 10-2.
LOST COMMS LOST

4000
2000
CONTOUR INTERVALS

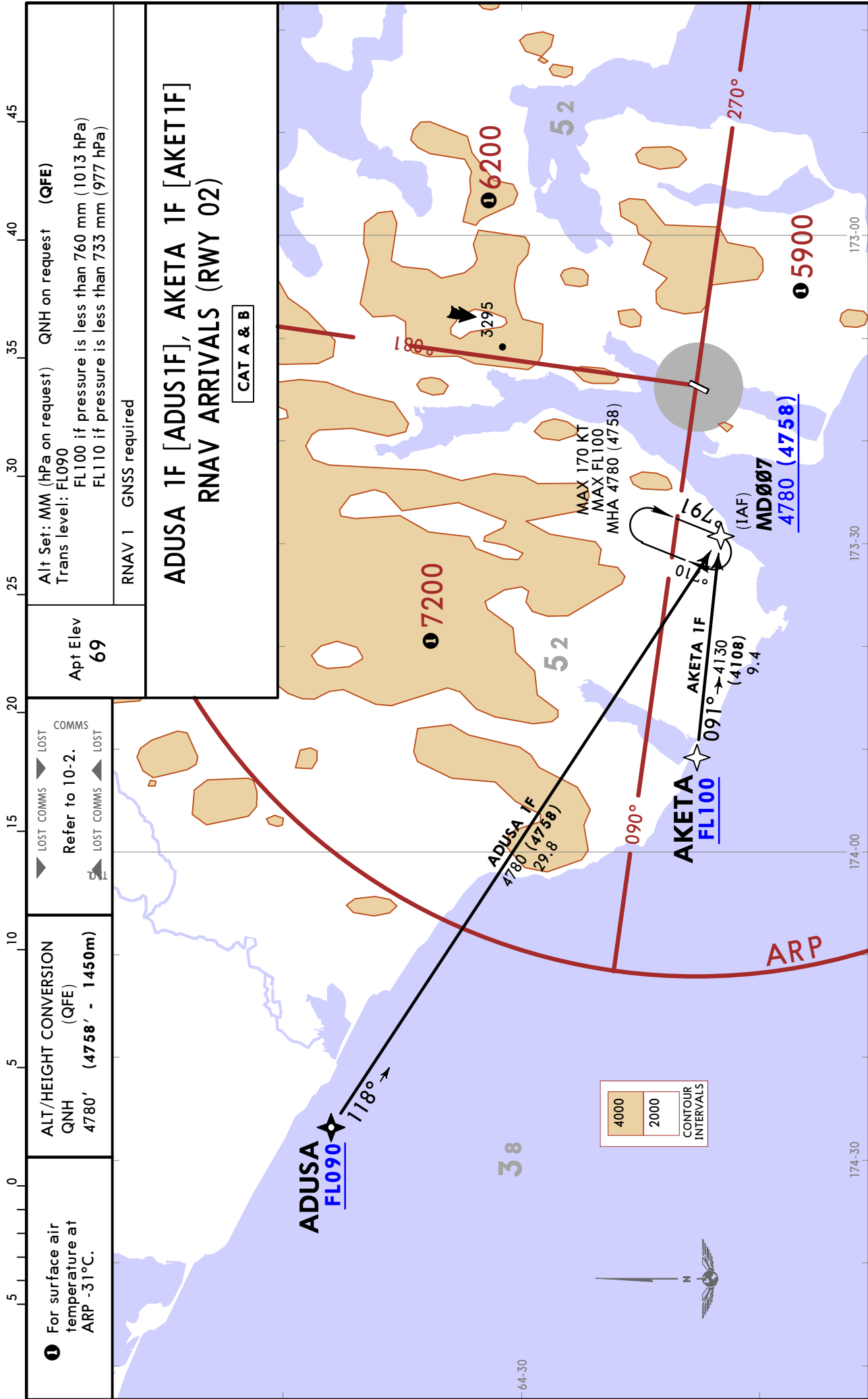


UHMD/PVS PROVIDENIYA BAY

25 OCT 24 **10-2B** Eff 31 Oct

JEPPESSEN PROVIDENIYA BAY, RUSSIA

RNAV STAR



UHMD/PVS PROVIDENIYA BAY

25 OCT 24

10-2D

Eff 31 Oct

STAR

Apt Elev
69

Alt Set: MM (hPa on request) QNH on request (QFE)
Trans level: FL090
FL100 if pressure is less than 760 mm (1013 hPa)
FL110 if pressure is less than 733 mm (977 hPa)

BAMER 1A [BAME1A], DEGIR 1A [DEGI1A] DILEP 1A [DILE1A], SORIS 1A [SORI1A] ARRIVALS (ALL RWYS)

UNDER RADAR CONTROL

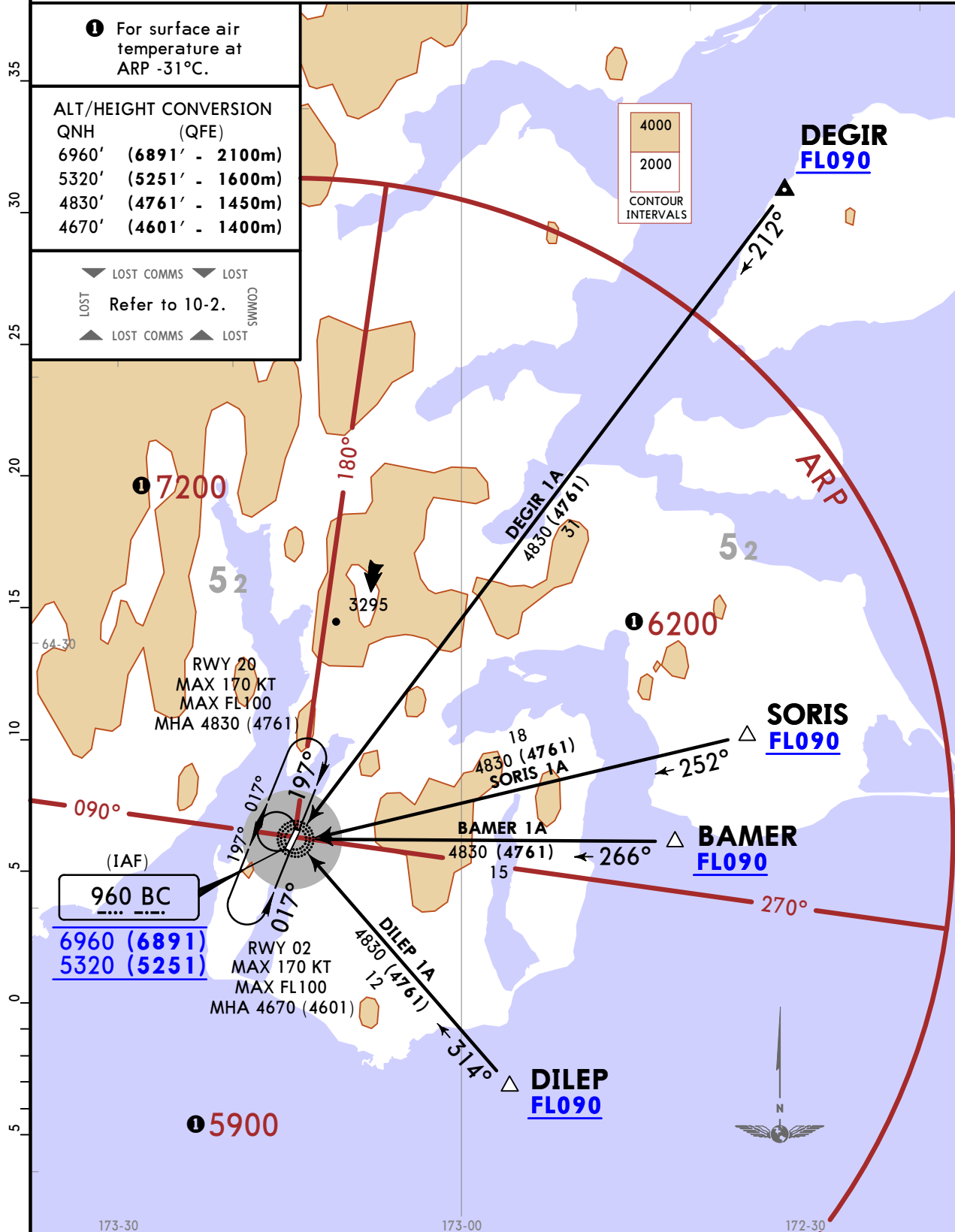
CAT A & B

For surface air temperature at ARP -31°C.

ALT/HEIGHT	CONVERSION
QNH	(QFE)
6960'	(6891' - 2100m)
5320'	(5251' - 1600m)
4830'	(4761' - 1450m)
4670'	(4601' - 1400m)

LOST COMMS LOST COMMS
 LOST Refer to 10-2. LOST
 ▲ LOST COMMS ▲ LOST

4000
2000
CONTOUR INTERVALS



UHMD/PVS PROVIDENIYA BAY

25 OCT 24 **10-3** Eff 31 Oct

JEPPESEN PROVIDENIYA BAY, RUSSIA

RNAV SID

Apt Elev
69

QNH on request (QFE)
Trans alt: 7130 (7108)

RNAV 1 GNSS required

1. Turn before DER is prohibited.
2. EXPECT close-in obstacles.

BAMER 1B [BAME1B], DEGIR 1B [DEGI1B] DILEP 1B [DILE1B], SORIS 1B [SORI1B] RNAV DEPARTURES (RWY 02)

CAT A & B

These SIDs require minimum climb gradients of 9.7% up to 2980 (2958) due to obstacles, then
BAMER 1B: 7.3% up to FL090 due to airspace structure.
DEGIR 1B: 4.0% up to FL090 due to airspace structure.
DILEP 1B: 5.8% up to FL090 due to airspace structure.
SORIS 1B: 6.7% up to FL090 due to airspace structure.

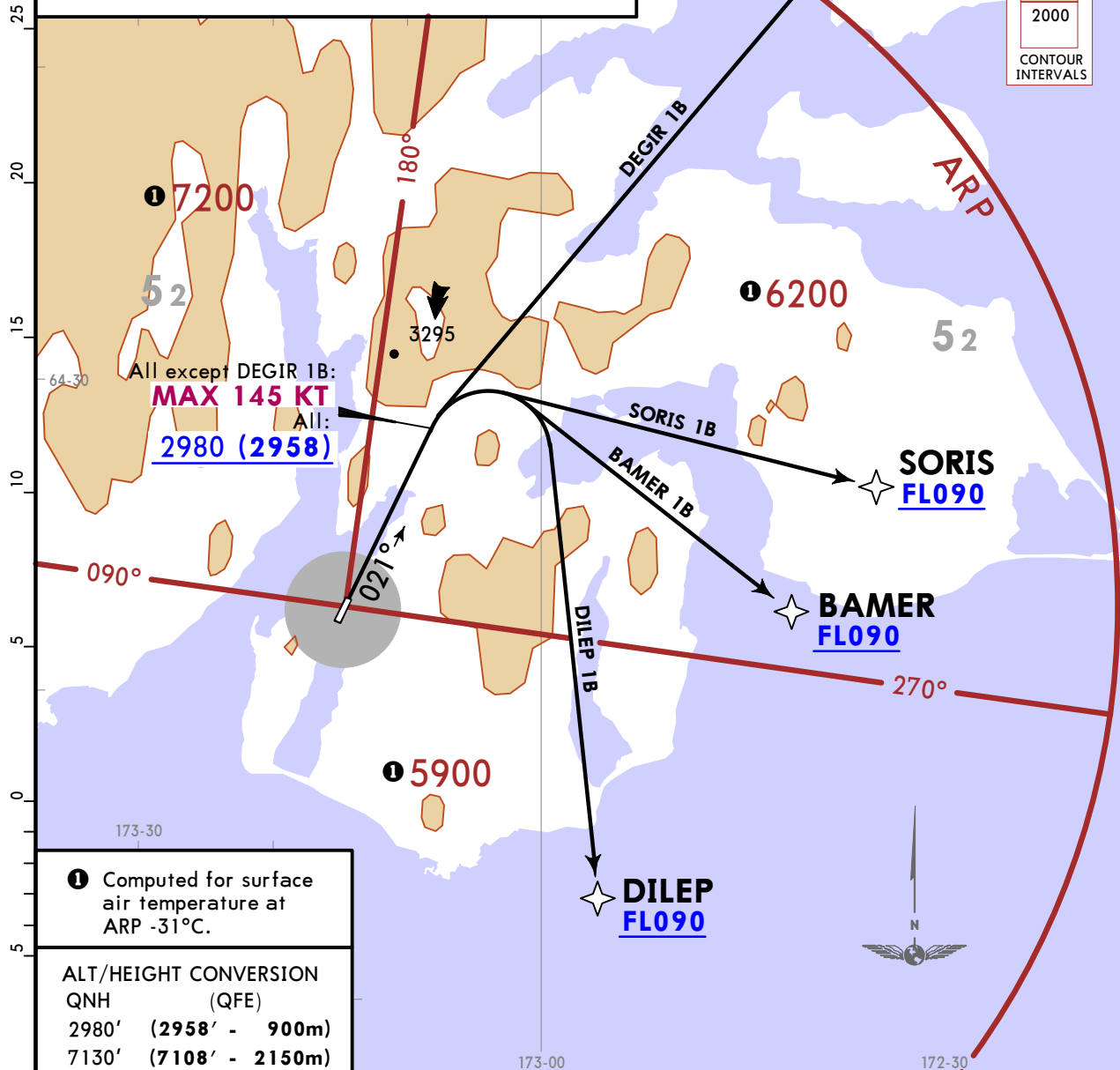
Gnd speed-KT	75	100	150	200	250	300
4.0% V/V (fpm)	304	405	608	810	1013	1215
5.8% V/V (fpm)	441	587	881	1175	1468	1762
6.7% V/V (fpm)	509	678	1018	1357	1696	2035
7.3% V/V (fpm)	554	739	1109	1479	1848	2218
9.7% V/V (fpm)	737	982	1473	1965	2456	2947

Pilot may reach Provideniya Bay
LCU/TWR: +7 (42735) 22584.
In all cases pilot may reach Anadyr
LCU (Anadyr FIC) by calling:
+7 (924) 6652416,
+7 (42732) 27413.

LOST COMMS

LOST COMMS

LOST COMMS



All except DEGIR 1B:
MAX 145 KT
All:
2980 (2958)

① Computed for surface
air temperature at
ARP -31°C.

ALT/HEIGHT CONVERSION

QNH	(QFE)
2980'	(2958' - 900m)
7130'	(7108' - 2150m)

UHMD/PVS PROVIDENIYA BAY

25 OCT 24 (10-3A) Eff 31 Oct

JEPPESEN PROVIDENIYA BAY, RUSSIA

RNAV SID

Apt Elev 69	QNH on request (QFE) Trans alt: 7130 (7062)
	RNAV 1 GNSS required
	Turn before DER is prohibited.

BAMER 1C [BAME1C], DEGIR 1C [DEGI1C] DILEP 1C [DILE1C], SORIS 1C [SORI1C] RNAV DEPARTURES (RWY 20)

CAT A & B

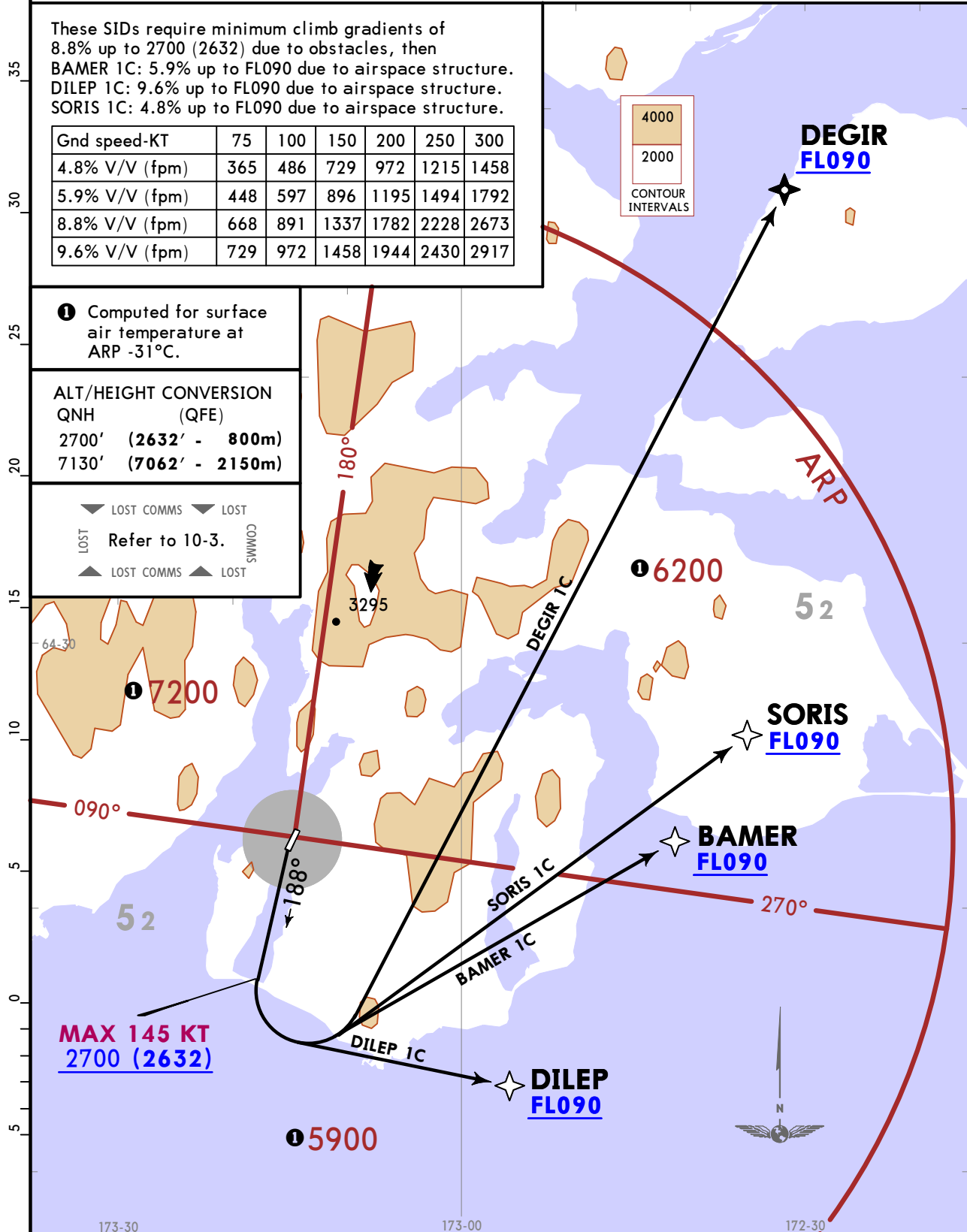
These SIDs require minimum climb gradients of 8.8% up to 2700 (2632) due to obstacles, then BAMER 1C: 5.9% up to FL090 due to airspace structure. DILEP 1C: 9.6% up to FL090 due to airspace structure. SORIS 1C: 4.8% up to FL090 due to airspace structure.

Gnd speed-KT	75	100	150	200	250	300
4.8% V/V (fpm)	365	486	729	972	1215	1458
5.9% V/V (fpm)	448	597	896	1195	1494	1792
8.8% V/V (fpm)	668	891	1337	1782	2228	2673
9.6% V/V (fpm)	729	972	1458	1944	2430	2917

① Computed for surface air temperature at ARP -31°C.

ALT/HEIGHT CONVERSION	QNH (QFE)
2700' (2632' - 800m)	
7130' (7062' - 2150m)	

▼ LOST COMMS ▼ LOST COMMS
 Refer to 10-3.
 ▲ LOST COMMS ▲ LOST COMMS



UHMD/PVS PROVIDENIYA BAY

25 OCT 24 **10-3B** Eff 31 Oct

JEPPESSEN PROVIDENIYA BAY, RUSSIA

RNAV SID

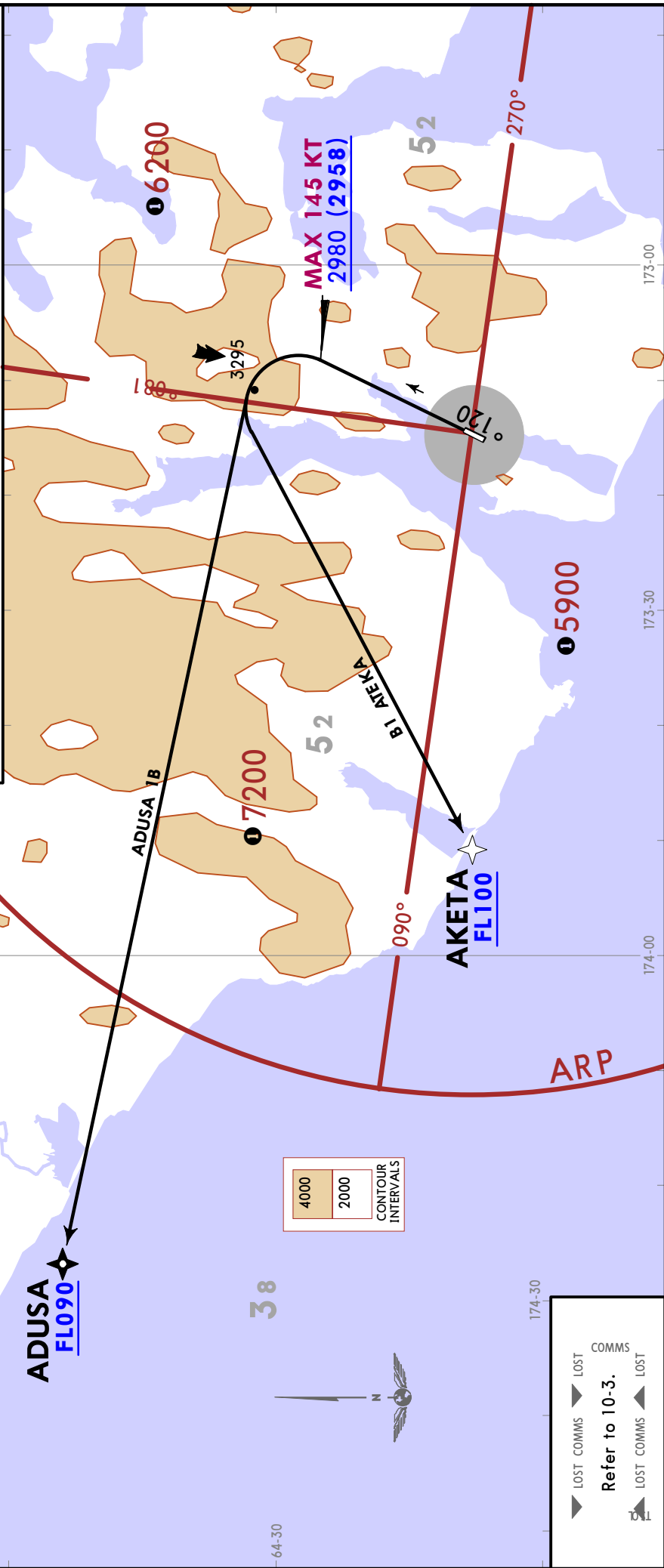
Apt Elev 69	QNH on request (QFE) Trans alt: 7130 (7108) RNAV 1 GNSs required 1. Turn before DER is prohibited. 2. EXPECT close-in obstacles.
ADUSA 1B [ADUS1B], AKETA 1B [AKET1B] RNAV DEPARTURES (RWY 02) CAT A & B	

These SIDs require minimum climb gradients of 9.7% up to 2980 (2958) due to obstacles, then AKETA 1B: 5.7% up to FL100 due to airspace structure.

Gnd speed-KT	75	100	150	200	250	300
5.7% V/V (fpm)	433	577	866	1154	1443	1732
9.7% V/V (fpm)	737	982	1473	1965	2456	2947

1 Computed for surface air temperature at ARP -31°C.

ALT/HEIGHT CONVERSION
 QNH (QFE)
 2980' (2958' - 900m)
 7130' (7108' - 2150m)



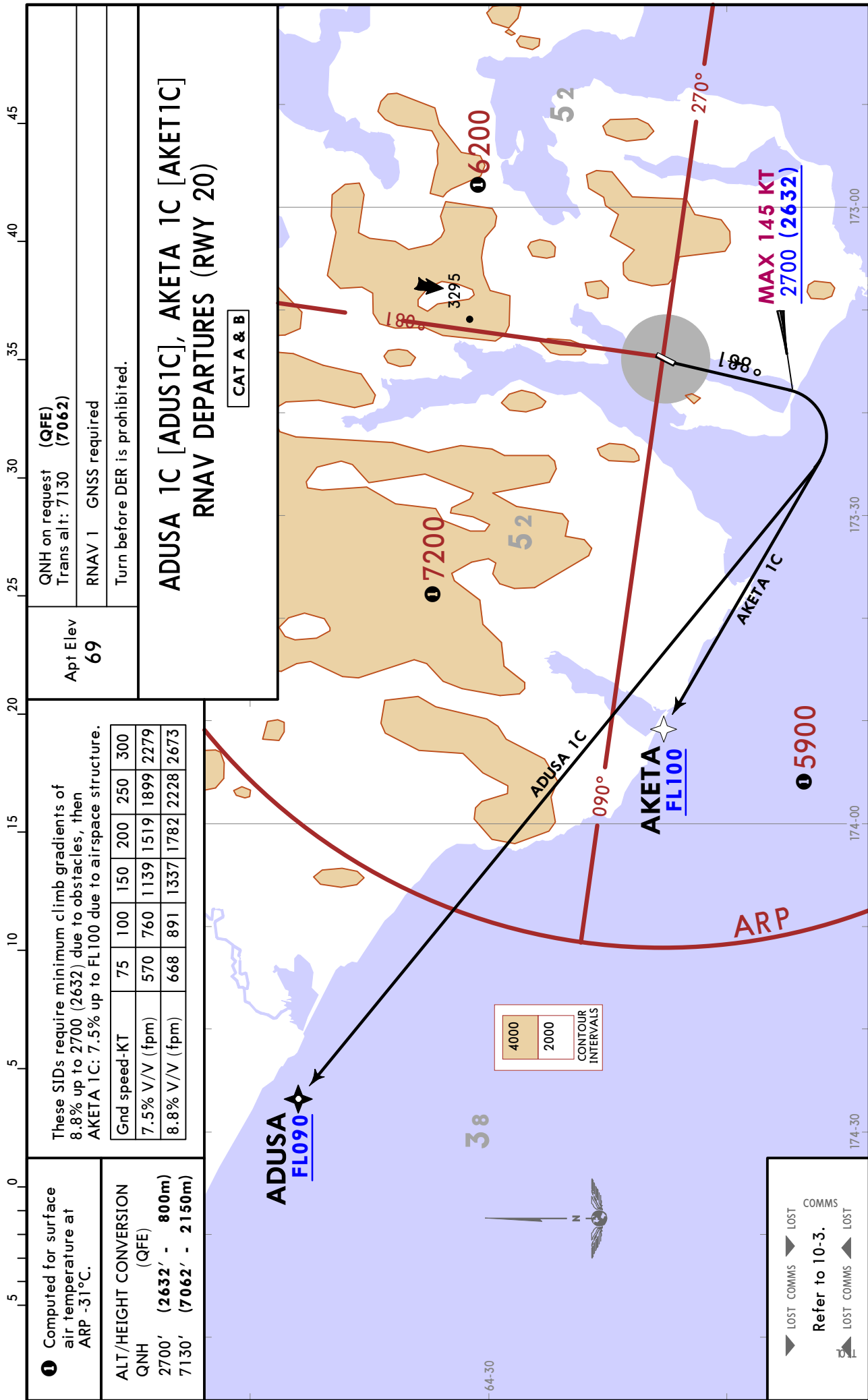
▲ LOST COMMS ▲ LOST COMMS
Refer to 10-3.
 ▲ LOST COMMS ▲ LOST COMMS

UHMD/PVS PROVIDENIYA BAY

25 OCT 24 **10-3C** Eff 31 Oct

JEPPESEN PROVIDENIYA BAY, RUSSIA

RNAV SID



QNH on request (QFE)
Trans alt: 7130 (7062)
RNAV 1 GNSs required
Turn before DER is prohibited.

**ADUSA 1C [ADUS1C], AKETA 1C [AKET1C]
RNAV DEPARTURES (RWY 20)**
CAT A & B

These SIDs require minimum climb gradients of 8.8% up to 2700 (2632) due to obstacles, then AKETA 1C: 7.5% up to FL100 due to airspace structure.

Gnd speed-KT	75	100	150	200	250	300
7.5% V/V (fpm)	570	760	1139	1519	1899	2279
8.8% V/V (fpm)	668	891	1337	1782	2228	2673

Computed for surface air temperature at ARP -31°C.

ALT/HEIGHT CONVERSION
QNH (QFE)
2700' (2632' - 800m)
7130' (7062' - 2150m)

LOST COMMS ▲ LOST COMMS
Refer to 10-3.
LOST COMMS ▲ LOST

UHMD/PVS PROVIDENIYA BAY

JEPPESEN PROVIDENIYA BAY, RUSSIA

25 OCT 24 **10-3D** **Eff 31 Oct**

SID

Apt Elev
69

QNH on request (QFE)
Trans alt: 7130 (7108)
1. Turn before DER is prohibited.
2. EXPECT close-in obstacles.

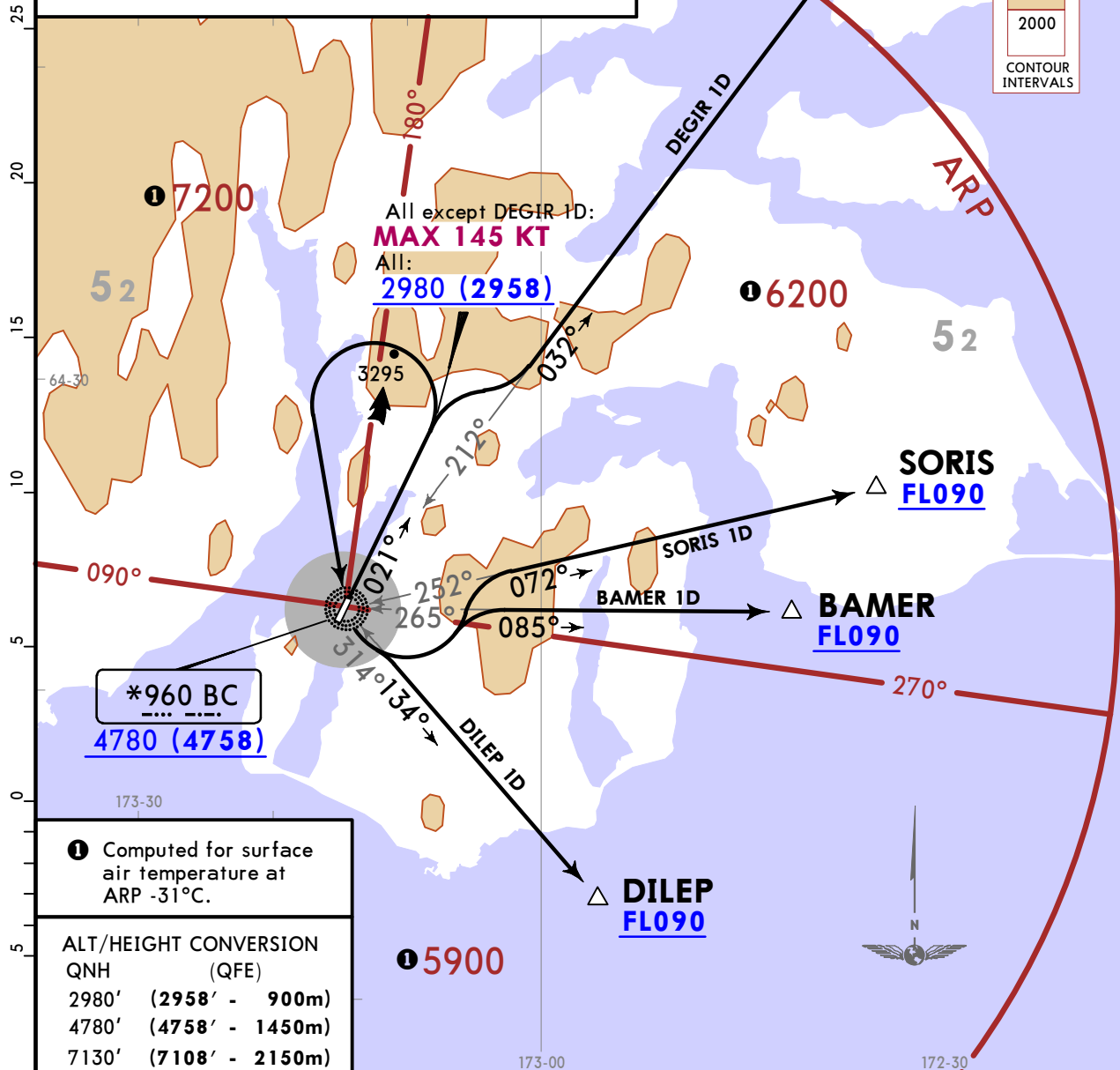
**BAMER 1D [BAME1D], DEGIR 1D [DEGI1D]
DILEP 1D [DILE1D], SORIS 1D [SORI1D]
DEPARTURES (RWY 02)
UNDER RADAR CONTROL
CAT A & B**

These SIDs require minimum climb gradients of 9.7% up to 2980 (2958) due to obstacles, then
BAMER 1D: 4.1% up to FL090 due to airspace structure.
DEGIR 1D: 4.0% up to FL090 due to airspace structure.
DILEP 1D: 4.7% up to FL090 due to airspace structure.
SORIS 1D: 3.8% up to FL090 due to airspace structure.

Gnd speed-KT	75	100	150	200	250	300
3.8% V/V (fpm)	289	385	577	770	962	1154
4.0% V/V (fpm)	304	405	608	810	1013	1215
4.1% V/V (fpm)	311	415	623	830	1038	1246
4.7% V/V (fpm)	357	476	714	952	1190	1428
9.7% V/V (fpm)	737	982	1473	1965	2456	2947

Refer to 10-3.

4000
2000
CONTOUR INTERVALS



*960 BC
4780 (4758)

① Computed for surface air temperature at ARP -31°C.

ALT/HEIGHT CONVERSION
QNH (QFE)

2980'	(2958' - 900m)
4780'	(4758' - 1450m)
7130'	(7108' - 2150m)

UHMD/PVS PROVIDENIYA BAY

Apt Elev
69

QNH on request (QFE)
Trans alt: 7130 (7062)
Turn before DER is prohibited.

**BAMER 1E [BAME1E], DEGIR 1E [DEGI1E]
DILEP 1E [DILE1E], SORIS 1E [SORI1E]
DEPARTURES (RWY 20)**

CAT A & B

These SIDs require minimum climb gradients of 8.8% up to 2700 (2632) due to obstacles, then BAMER 1E: 4.5% up to FL090 due to airspace structure. DILEP 1E: 8.8% up to FL090 due to airspace structure. SORIS 1E: 4.0% up to FL090 due to airspace structure.

Gnd speed-KT	75	100	150	200	250	300
4.0% V/V (fpm)	304	405	608	810	1013	1215
4.5% V/V (fpm)	342	456	684	911	1139	1367
8.8% V/V (fpm)	668	891	1337	1782	2228	2673

▼ LOST COMMS ▼ LOST
Refer to 10-3.
▲ LOST COMMS ▲ LOST

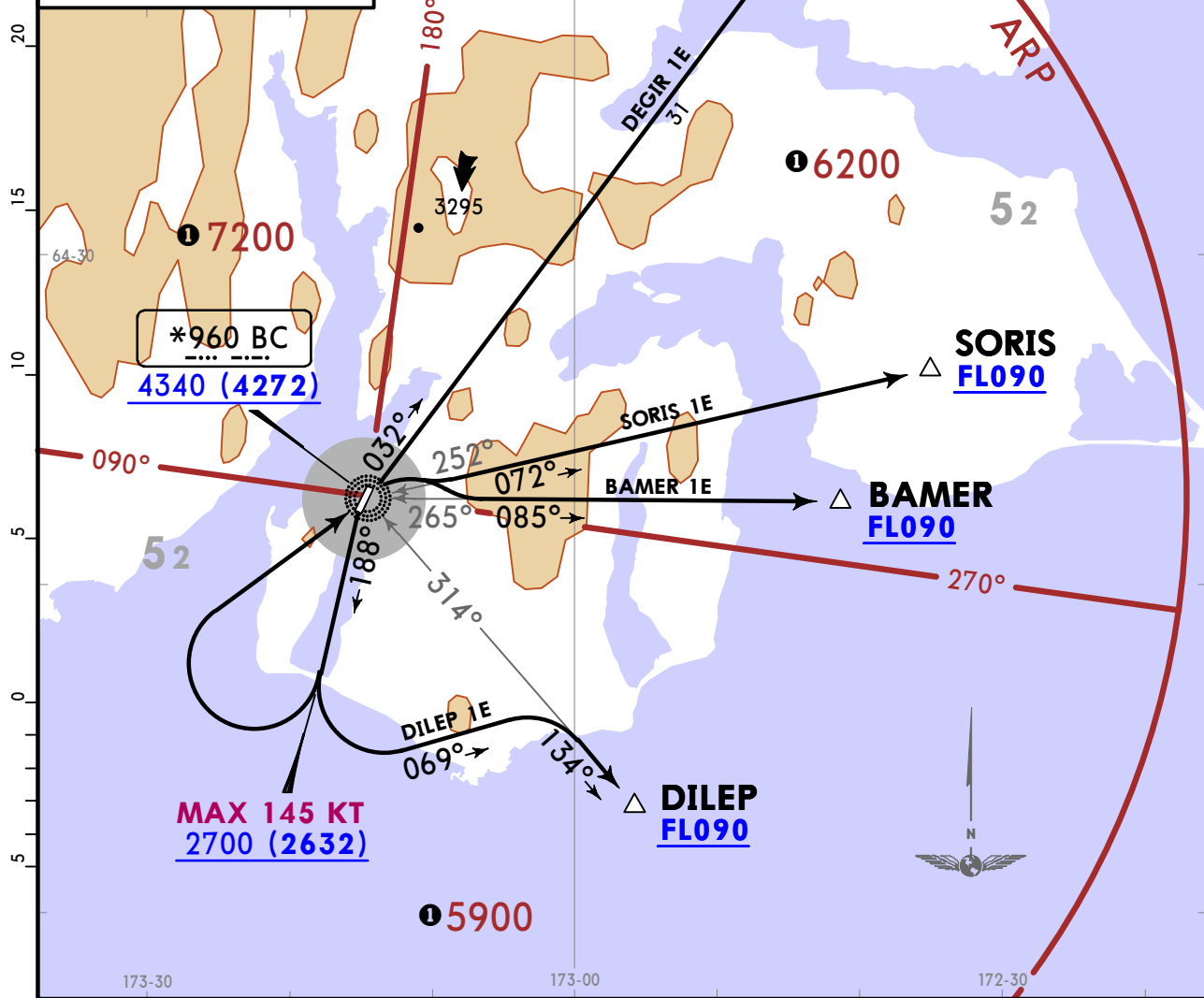
① Computed for surface air temperature at ARP -31°C.

ALT/HEIGHT CONVERSION

QNH (QFE)

2700' (2632' - 800m)
4340' (4272' - 1300m)
7130' (7062' - 2150m)

4000
2000
CONTOUR INTERVALS



UHMD/PVS PROVIDENIYA BAY

QNH on request (QFE)
Trans alt: 7130 (7108)
1. Turn before DER is prohibited.
2. EXPECT close-in obstacles.

Apt Elev
69

**ADUSA 1D [ADUS1D], AKETA 1D [AKET1D]
DEPARTURES (RWY 02)
UNDER RADAR CONTROL**

CAT A & B

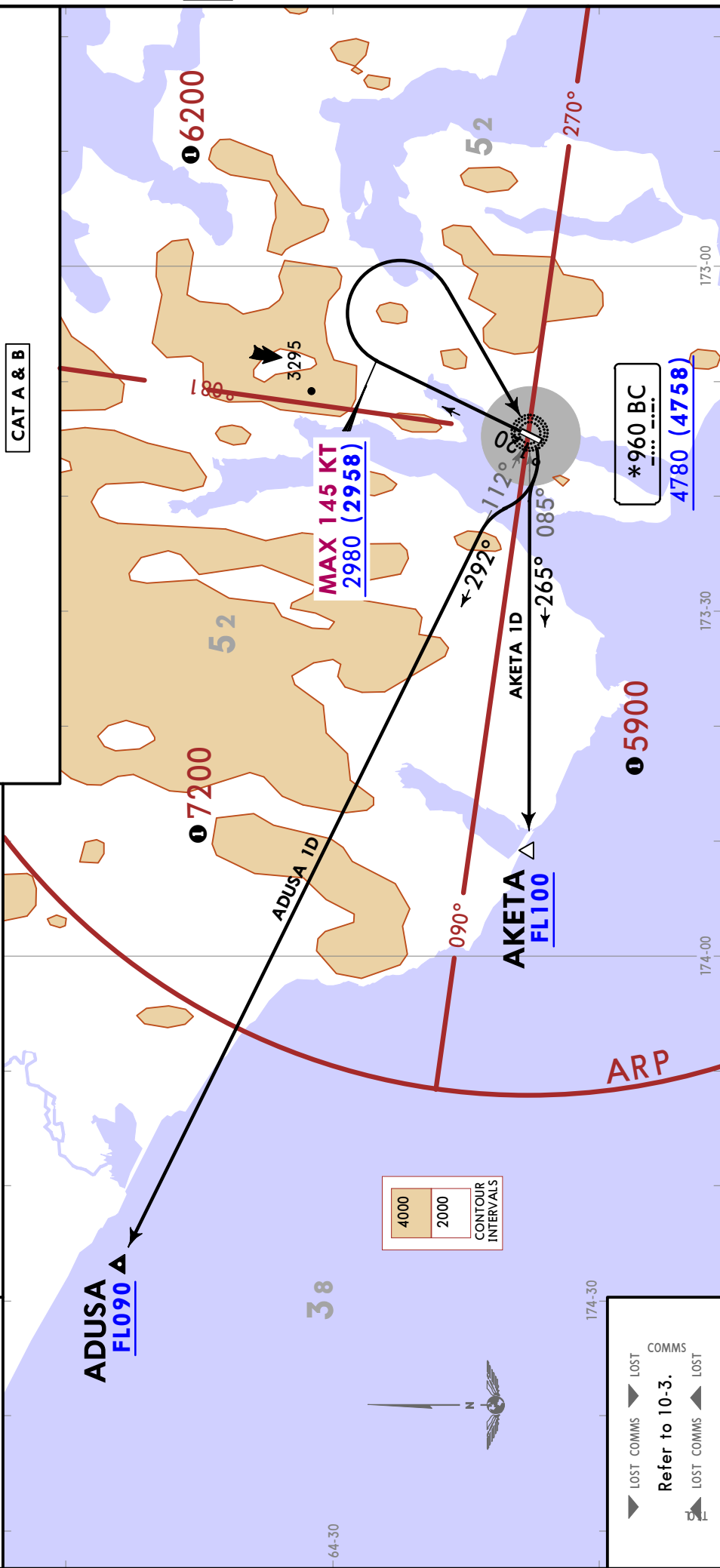
These SIDs require minimum climb gradients of 9.7% up to 2980 (2958) due to obstacles, then AKETA 1D: 4.7% up to FL100 due to airspace structure.

Gnd speed-KT	75	100	150	200	250	300
4.7% V/V (fpm)	357	476	714	952	1190	1428
9.7% V/V (fpm)	737	982	1473	1965	2456	2947

Computed for surface air temperature at ARP -31°C.

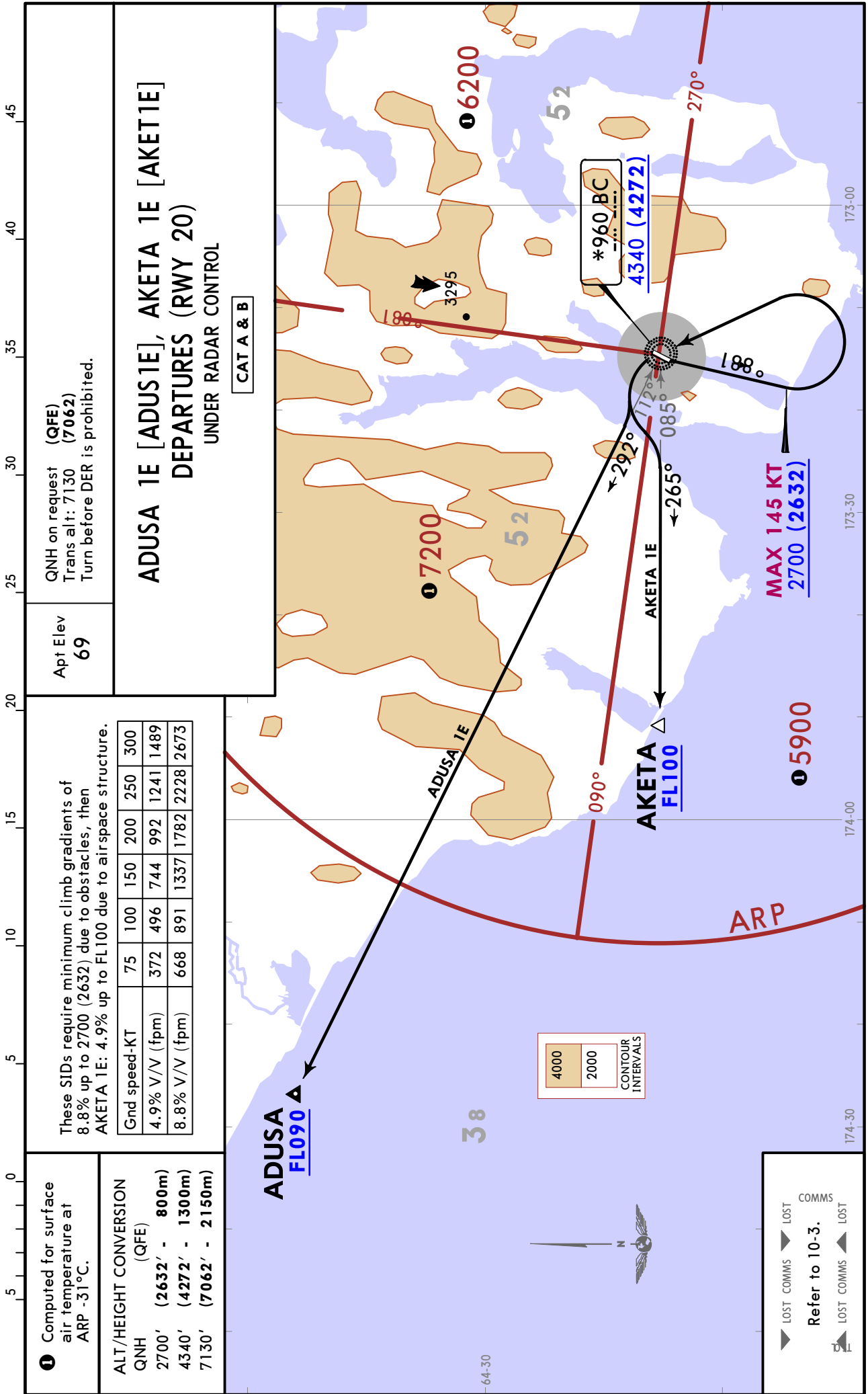
ALT/HEIGHT CONVERSION (QFE)

2980'	(2958' - 900m)
4780'	(4758' - 1450m)
7130'	(7108' - 2150m)



▲ LOST COMMS ▲ LOST COMMS
Refer to 10-3.
▲ LOST COMMS ▲ LOST

UHMD/PVS PROVIDENIYA BAY



QNH on request (QFE)
Trans alt: 7130 (7062)
Turn before DER is prohibited.

Apt Elev
69

ADUSA 1E [ADUS1E], AKETA 1E [AKET1E]
DEPARTURES (RWY 20)
UNDER RADAR CONTROL

These SIDs require minimum climb gradients of
8.8% up to 2700 (2632) due to obstacles, then
AKETA 1E: 4.9% up to FL100 due to airspace structure.

Gnd speed-KT	75	100	150	200	250	300
4.9% V/V (fpm)	372	496	744	992	1241	1489
8.8% V/V (fpm)	668	891	1337	1782	2228	2673

ALT/HEIGHT CONVERSION
QNH (QFE)
2700' (2632' - 800m)
4340' (4272' - 1300m)
7130' (7062' - 2150m)

Computed for surface
air temperature at
ARP -31°C.

CAT A & B

4000
2000
CONTOUR INTERVALS

ADUSA FL090 ▲

ADUSA 1E

AKETA FL100 ▲

AKETA 1E

090°

292°

112°

085°

265°

4340 (4272)

*960 BC

MAX 145 KT
2700 (2632)

7200

6200

5900

3295

188°

270°

ARP

174-30 173-30 173-00

64-30 38 52 52

LOST COMMS ▲ LOST COMMS ▲ LOST COMMS ▲ LOST COMMS ▲

Refer to 10-3.

UHMD/PVS
PROVIDENIYA BAY

 **JEPPESEN** PROVIDENIYA BAY, RUSSIA
19 JAN 24 **10-4** **Eff 25 Jan** **NOISE**

NOISE ABATEMENT

LT minus 12 HOURS = UTC (Z)

GENERAL

Noise abatement procedures are not applicable.

To reduce unfavourable impact of noise on the environment, flight crews must apply flight modes specified in the Aeroplane Flight Manual.

PREFERENTIAL RWY SYSTEM

DAY PERIOD

The RWY is available for take-off and landing of ACFT carrying out scheduled and charter flights.

NIGHT PERIOD

The RWY is not available during the night period.

UHMD/PVS

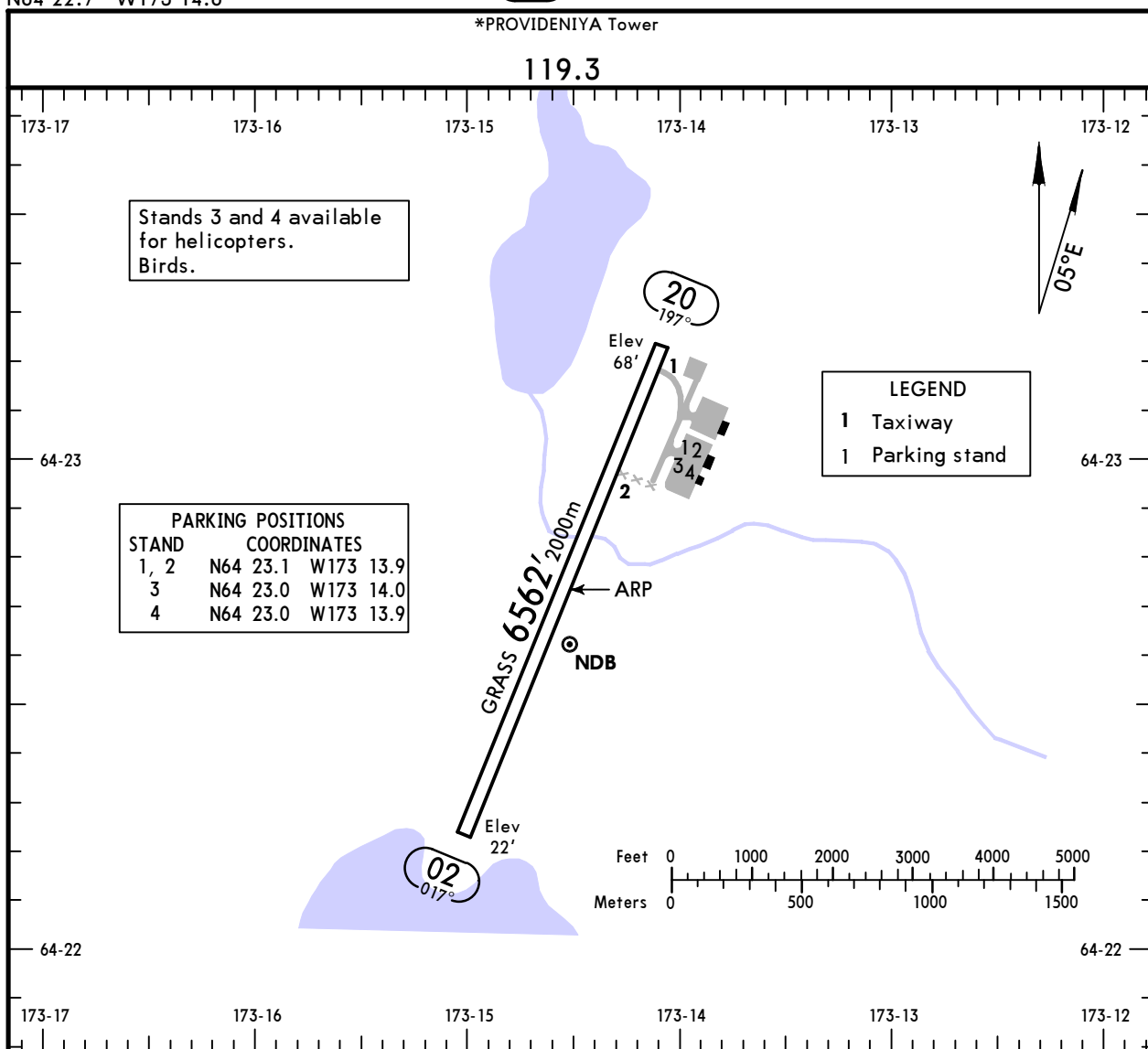
Apt Elev **69'**
N64 22.7 W173 14.6



18 APR 25 **(10-9)**

PROVIDENIYA BAY, RUSSIA

PROVIDENIYA BAY



ADDITIONAL RUNWAY INFORMATION

RWY	USABLE LENGTHS		TAKE-OFF	WIDTH
	Threshold	Glide Slope		
02 ① 20	6398' 1950m		6398' 1950m	171' 52m

① DAY only.

Std	TAKE-OFF
	R550m V800m

UHMD/PVS PROVIDENIYA BAY



PROVIDENIYA BAY, RUSSIA

8 NOV 24

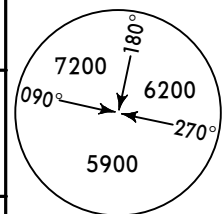
12-1

CAT A & B

RNP A Rwy 02

*PROVIDENIYA Tower

119.3



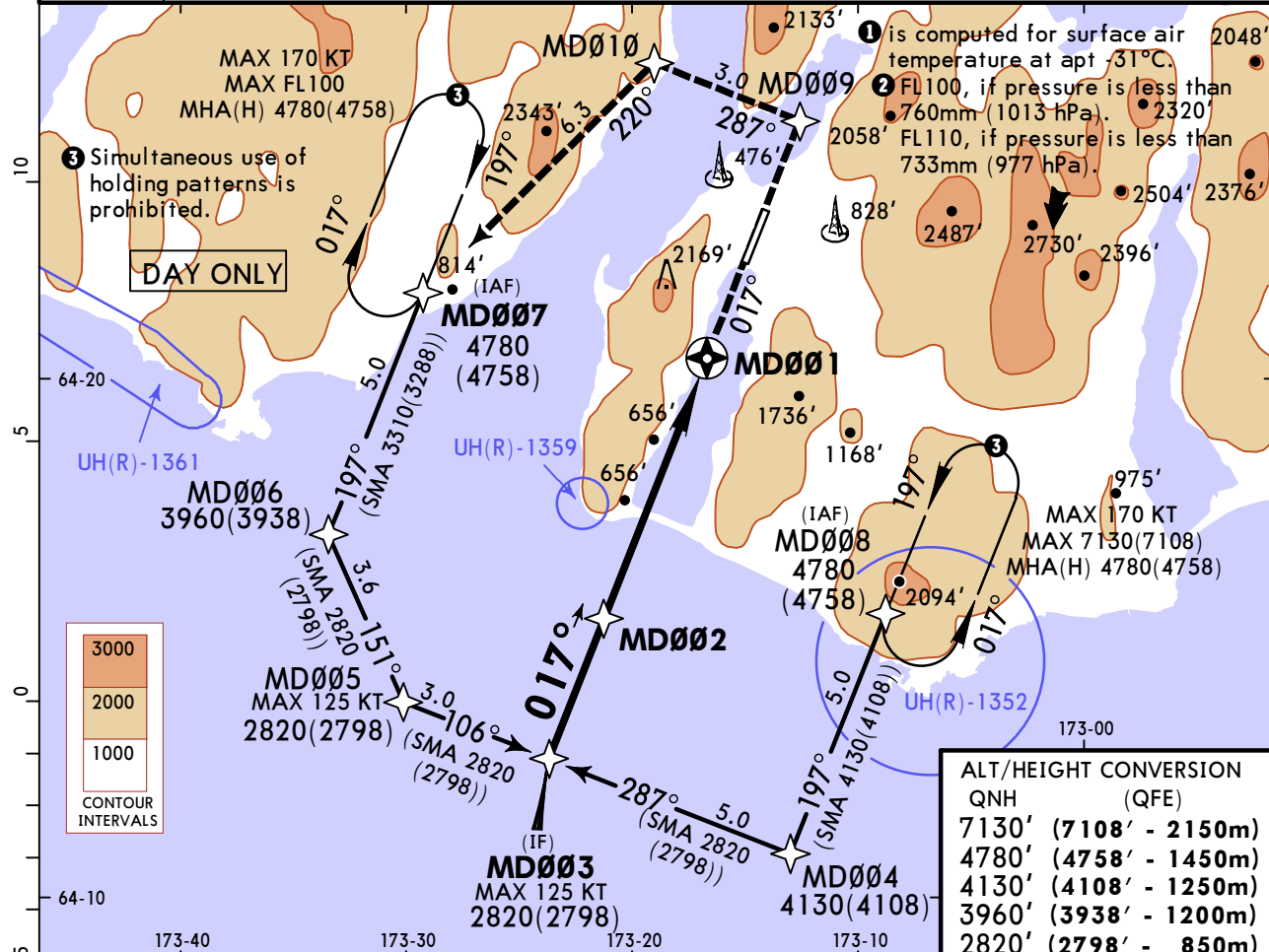
BRIEFING STRIP™

RNAV	Final Apch Crs 017°	MD002 2820' (2798')	MDA(H) 2740' (2671')	Apt Elev 69' Rwy 22'
------	----------------------------------	-------------------------------	--------------------------------	-------------------------

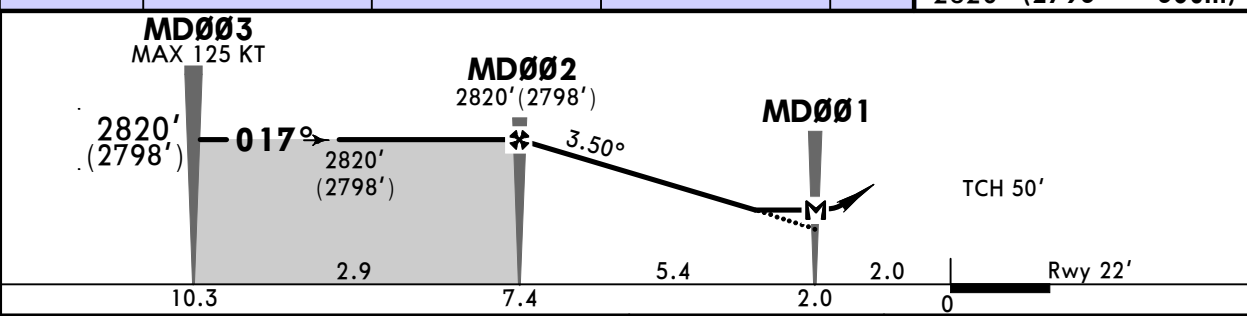
MISSED APCH: Climb on track 017° to MD009 (MAX 130 KT), then turn LEFT to MD010 (MAX 130 KT), then to MD007 climbing to 4780' (4758') or above, then proceed according to chart or to holding.

MSA ARP ①

Alt Set: MM(hPa on req) QNH on req (QFE) Trans level: FL090 ② Trans alt: 7130' (7108')
RNP apch | 1. GNSS required. 2. Increased turbulence with down-draughts can be expected on final.



QNH	(QFE)
7130'	(7108' - 2150m)
4780'	(4758' - 1450m)
4130'	(4108' - 1250m)
3960'	(3938' - 1200m)
2820'	(2798' - 850m)



Gnd speed-Kts	70	90	100	120	140	160	130 KT MAX	MD009 ↑ on 017°
Descent Angle 3.50°	434	557	619	743	867	991		
MAP at MD001								
Timing not authorized for defining MAP.								

Std	CIRCLE-TO-LAND	
PANS OPS	Max KT	MDA(H)
	A 100	2740' (2671')
	B 135	2740' (2671')
	C	NOT APPLICABLE
D	NOT APPLICABLE	

① Upon reaching OCA(H) execute circling approach.

CHANGES: Note added.

© JEPPESEN, 2024. ALL RIGHTS RESERVED.

UHMD/PVS
PROVIDENIYA BAY



JEPPESSEN

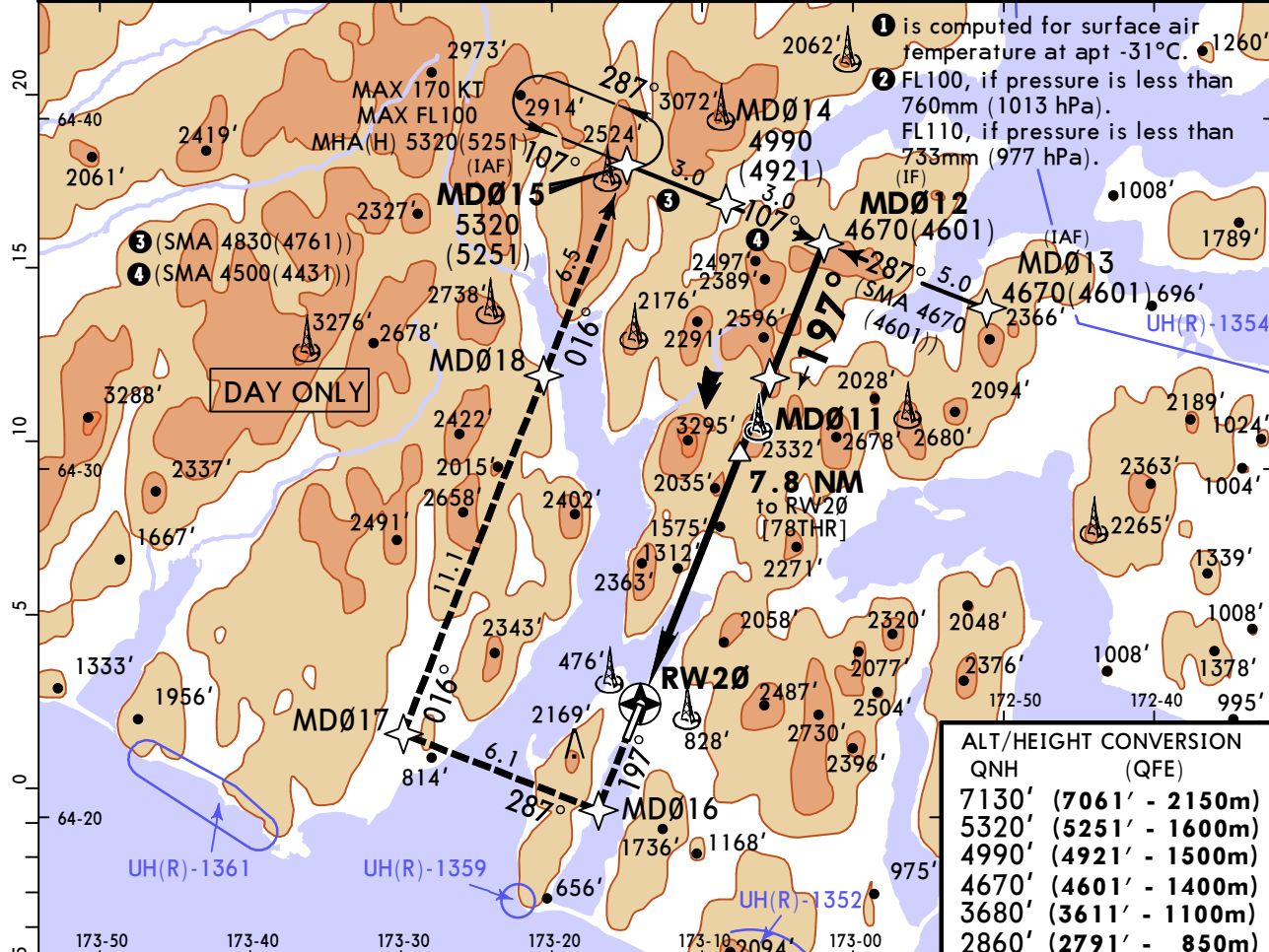
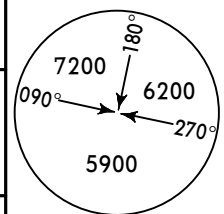
PROVIDENIYA BAY, RUSSIA

8 NOV 24 (12-2)

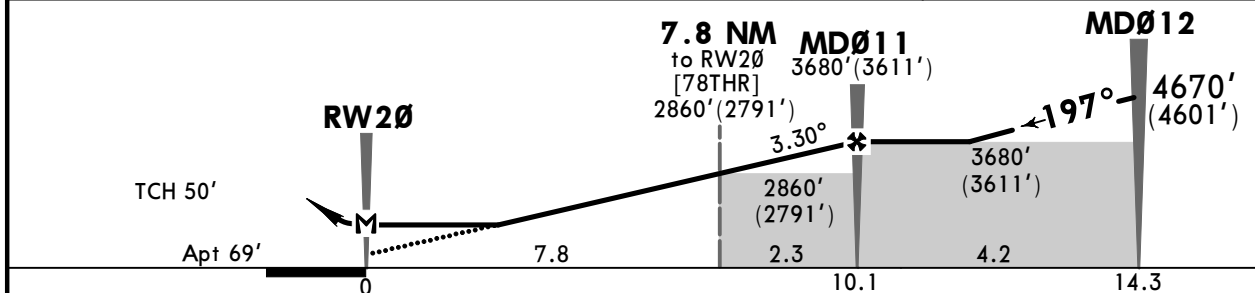
CAT A & B

RNP A Rwy 20

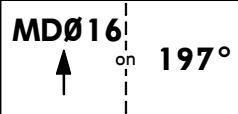
*PROVIDENIYA Tower				
119.3				
RNAV	Final Apch Crs 197°	MD011 3680' (3611')	MDA(H) 2740' (2671')	Apt Elev 69'
MISSED APCH: Climb on track 197° to MD016, then turn RIGHT to MD017, then turn RIGHT to MD018, then to MD015 climbing to 5320' (5251') or above, then proceed according to chart or to holding.				MSA ARP ①
Alt Set: MM(hPa on req)		QNH on req (QFE)		Trans level: FL090 ②
RNP apch		1. GNSS required. 2. Increased turbulence with down-draughts can be expected on final.		



ALT/HEIGHT	CONVERSION
QNH	(QFE)
7130'	(7061' - 2150m)
5320'	(5251' - 1600m)
4990'	(4921' - 1500m)
4670'	(4601' - 1400m)
3680'	(3611' - 1100m)
2860'	(2791' - 850m)



Gnd speed-KT	70	90	100	120	140	160
Descent Angle 3.30°	409	526	584	701	817	934
MAP at RW20						
Timing not authorized for defining MAP.						



Std		① CIRCLE-TO-LAND	
PANS OPS	Max KT	MDA(H)	
	A 100	2740' (2671')	V1500m
	B 135	2740' (2671')	V1600m
	C	NOT APPLICABLE	
D			
① Upon reaching OCA(H) execute circling approach.			

UHMD/PVS PROVIDENIYA BAY



JEPPESSEN

PROVIDENIYA BAY, RUSSIA

8 NOV 24

12-40

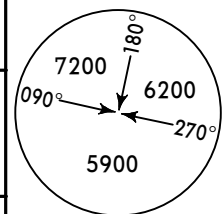
CAT A & B

GLS Rwy 02

*PROVIDENIYA Tower

BRIEFING STRIP™

119.3				
GBAS *Ch 20785 G02A	Final Apch Crs 017°	MD002 2820' (2798')	GLS DA(H) 2303' (2281')	Apt Elev 69' Rwy 22'

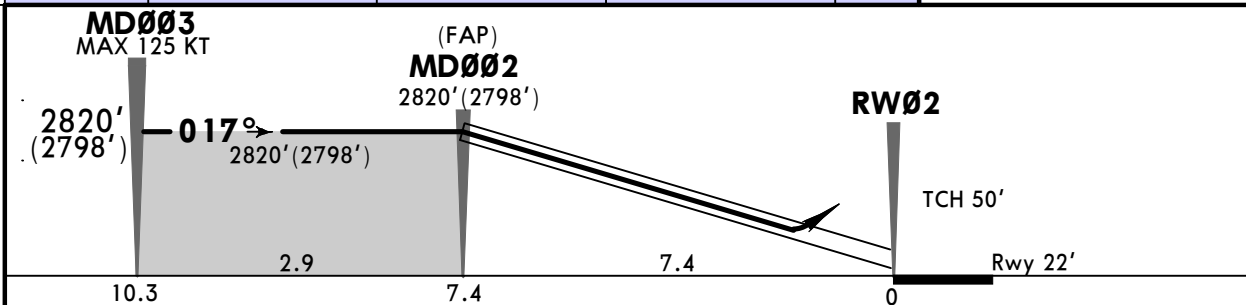
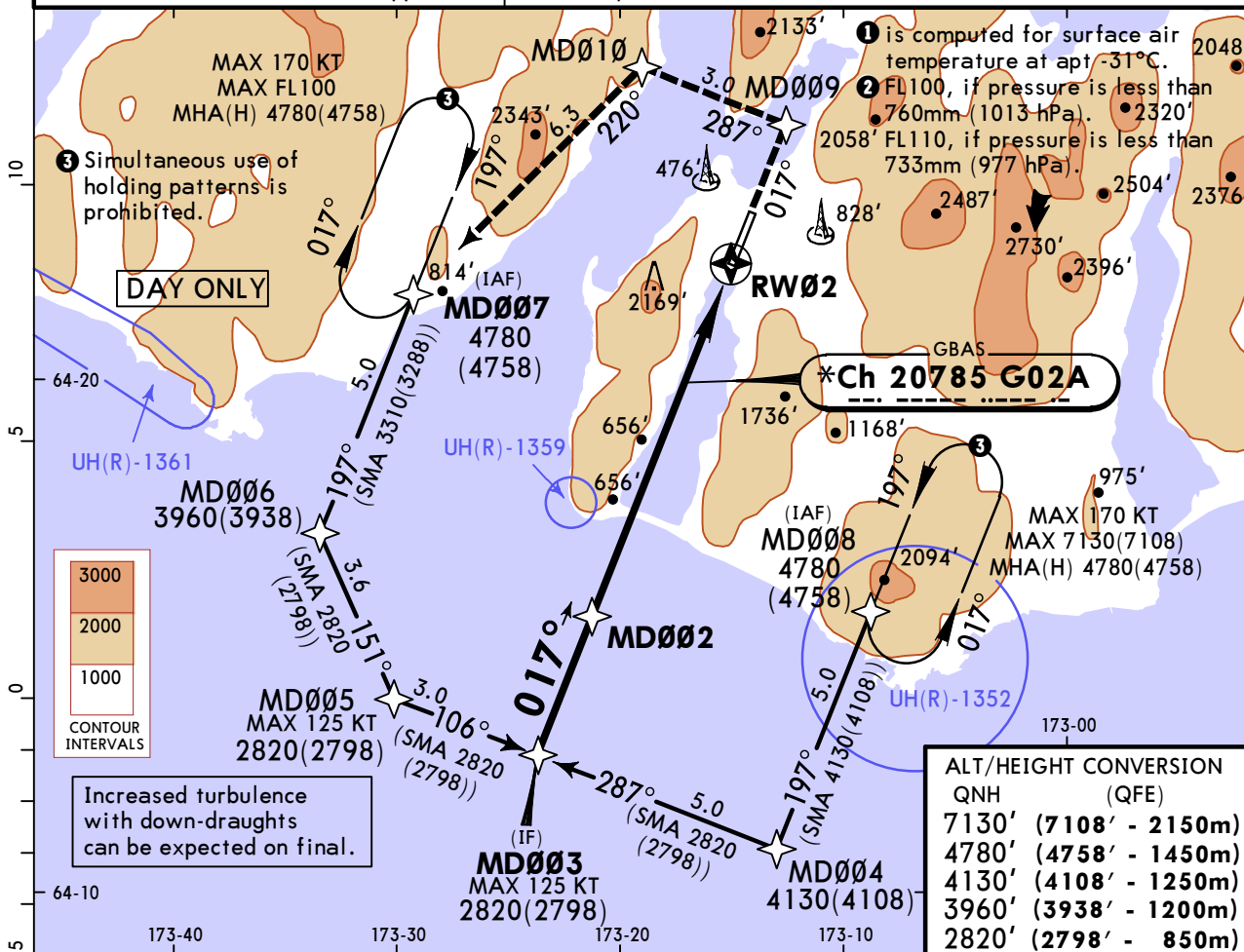


MISSED APCH: Climb on track 017° to MD009 (MAX 130 KT), then turn LEFT to MD010 (MAX 130 KT), then to MD007 climbing to 4780' (4758') or above, then proceed according to chart or to holding.

MSA ARP ①

Alt Set: MM(hPa on req) QNH on req (QFE) Trans level: FL090 ② Trans alt: 7130' (7108')

RNAV 1 for initial and missed approach. GNSS required.



Gnd speed-Kts	70	90	100	120	140	160	130 KT MAX	MD009 on 017°
Glide Path Angle 3.50°	434	557	619	743	867	991		

PANS OPS	STRAIGHT-IN LANDING		CIRCLE-TO-LAND	
	GLS		CIRCLE-TO-LAND	
A	DA(H) 2303' (2281')		Max KT 100	MDA(H) 2740' (2671') V1500m
B	R1500m		135	2740' (2671') V1600m
C	NOT APPLICABLE		C	NOT APPLICABLE
D	NOT APPLICABLE		D	NOT APPLICABLE

UHMD/PVS
PROVIDENIYA BAY



PROVIDENIYA BAY, RUSSIA

8 NOV 24

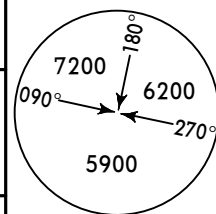
12-41

CAT A & B

GLS Rwy 20

*PROVIDENIYA Tower

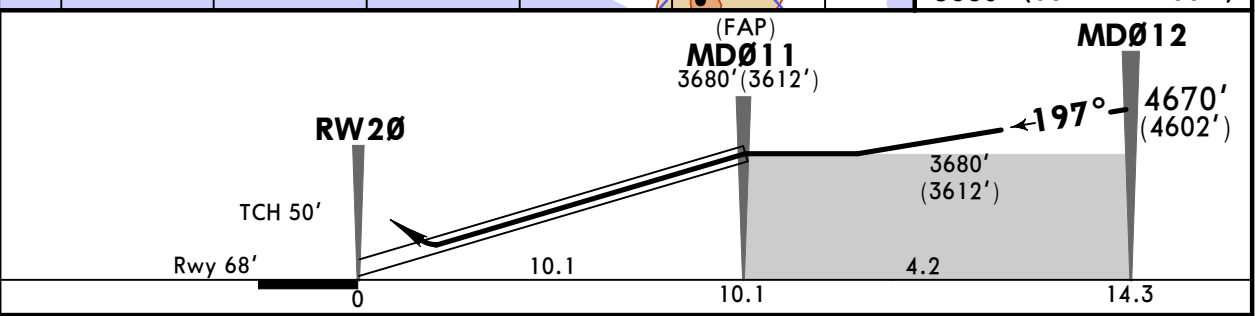
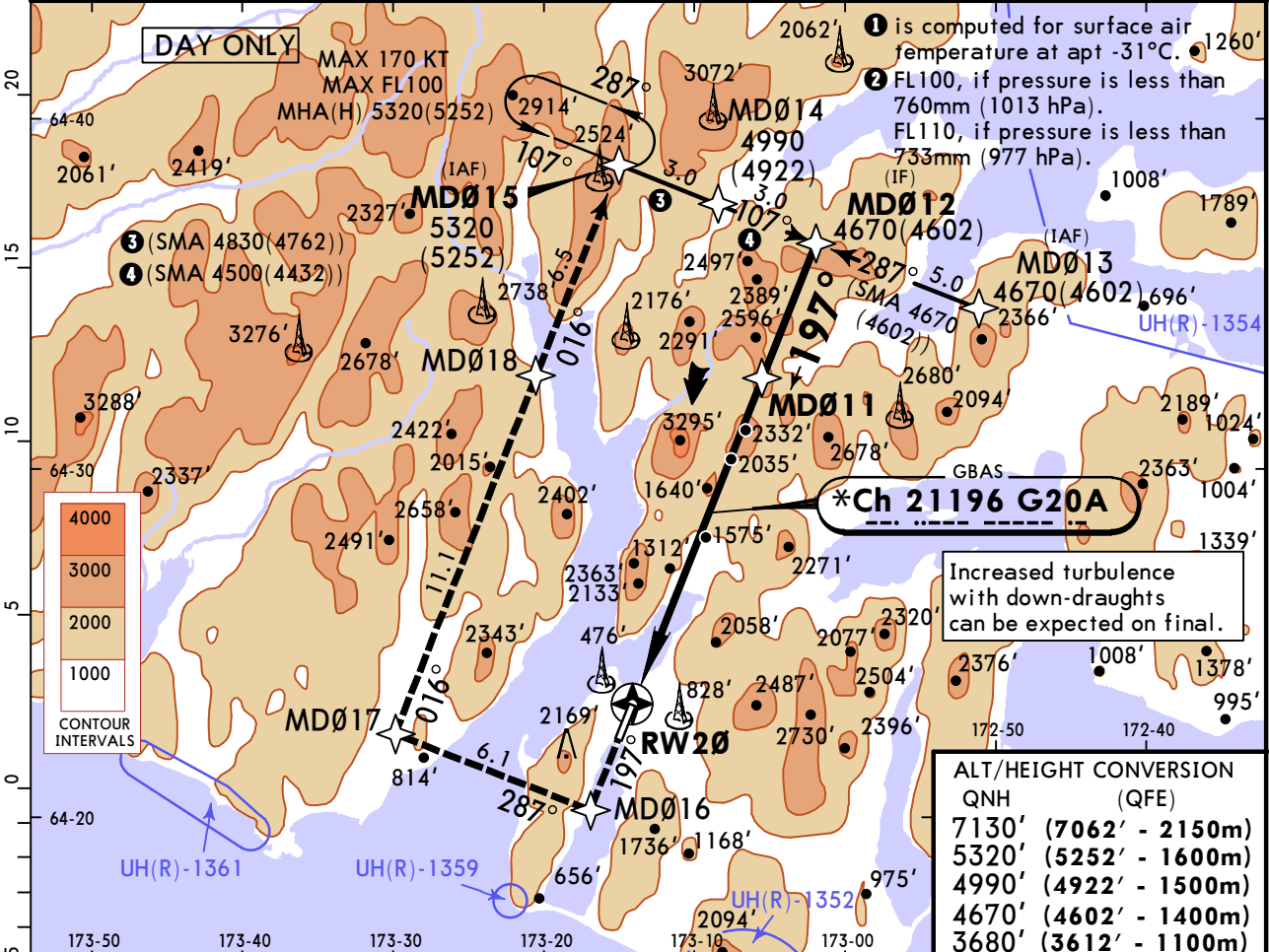
119.3



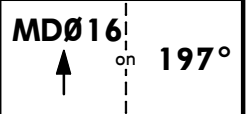
BRIEFING STRIP™

GBAS *Ch 21196 G20A	Final Apch Crs 197°	MDØ11 3680' (3612')	MDA(H) 2740' (2671')	Apt Elev 69' Rwy 68'
MISSED APCH: Climb on track 197° to MDØ16, then turn RIGHT to MDØ17, then turn RIGHT to MDØ18, then to MDØ15 climbing to 5320' (5252') or above, then proceed according to chart or to holding.				
Alt Set: MM(hPa on req)		QNH on req (QFE)	Trans level: FL090 ②	Trans alt: 7130' (7062')
RNAV 1 for initial and missed approach.		GNSS required.		

MSA ARP ①



Gnd speed-Kts	70	90	100	120	140	160
Glide Path Angle 3.30°	409	526	584	701	817	934



PANS OPS	Std		① CIRCLE-TO-LAND	
	Max KT	MDA(H)		
A	100	2740' (2671')	V1500m	
B	135	2740' (2671')	V1600m	
C			NOT APPLICABLE	
D			NOT APPLICABLE	

① Upon reaching OCA(H) execute circling approach.

UHMD/PVS PROVIDENIYA BAY



JEPPESSEN

PROVIDENIYA BAY, RUSSIA

8 NOV 24

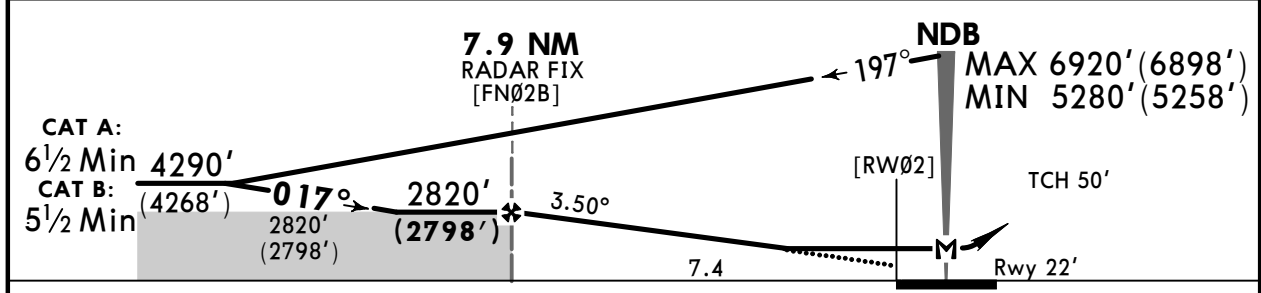
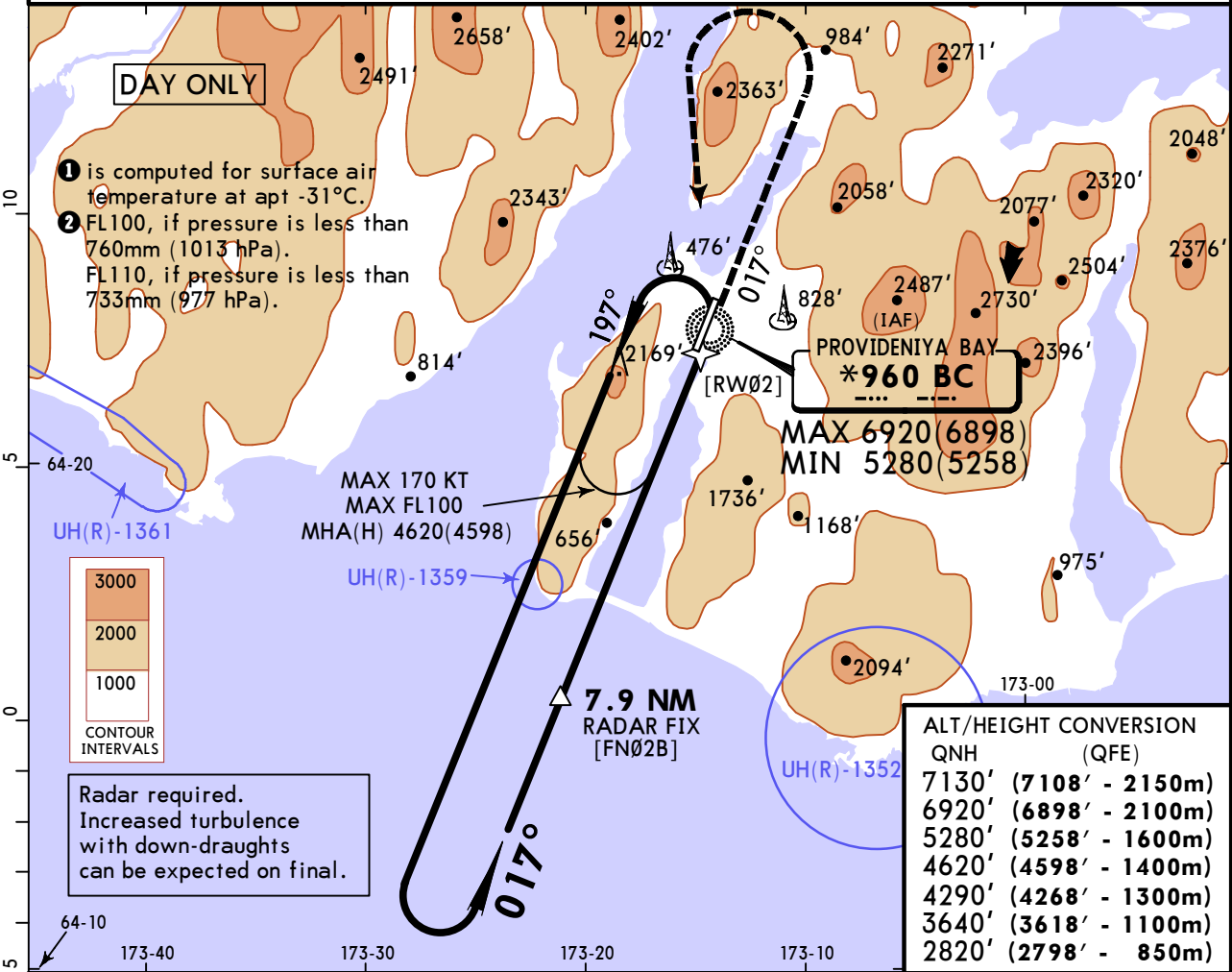
16-1

CAT A & B

NDB B Rwy 02

*PROVIDENIYA Tower				
119.3				
NDB BC *960	Final Apch Crs 017°	7.9 NM RADAR FIX 2820' (2798')	MDA(H) 2740' (2671')	Apt Elev 69' Rwy 22'
MISSED APCH: Climb on track 017° to 3640' (3618') or above, then turn LEFT (MAX 130 KT) to NDB climbing to 4620' (4598') or above. Turn before passing MAP is prohibited.				
MSA ARP 1				

Alt Set: MM(hPa on req) QNH on req (QFE) Trans level: FL090 **2** Trans alt: 7130' (7108')



Gnd speed-Kts	70	90	100	120	140	160	3640' (3618') _{on} 017°
Descent Angle 3.50°	434	557	619	743	867	991	
MAP at NDB							
Timing not authorized for defining MAP							

Std	1	CIRCLE-TO-LAND
Max KT	MDA(H)	
A 100	2740' (2671')	V1500m
B 135	2740' (2671')	V1600m
C		
D		NOT APPLICABLE

1 Upon reaching OCA(H) execute circling approach.

UHMD/PVS PROVIDENIYA BAY



JEPPESSEN

PROVIDENIYA BAY, RUSSIA

8 NOV 24

16-2

CAT A & B

NDB A Rwy 02

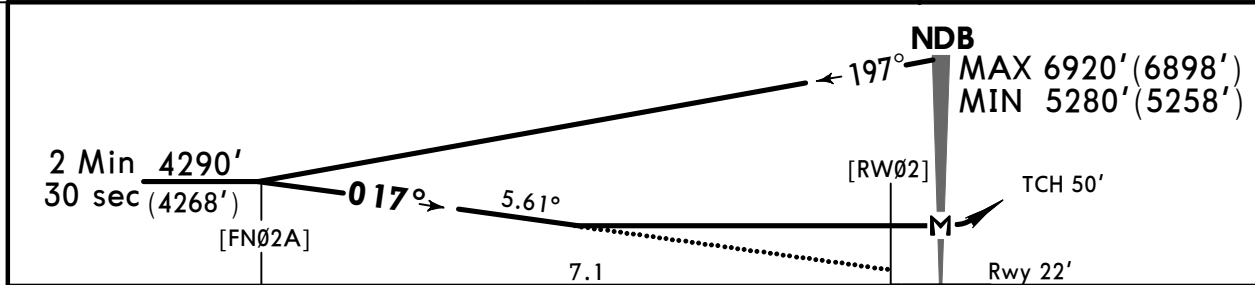
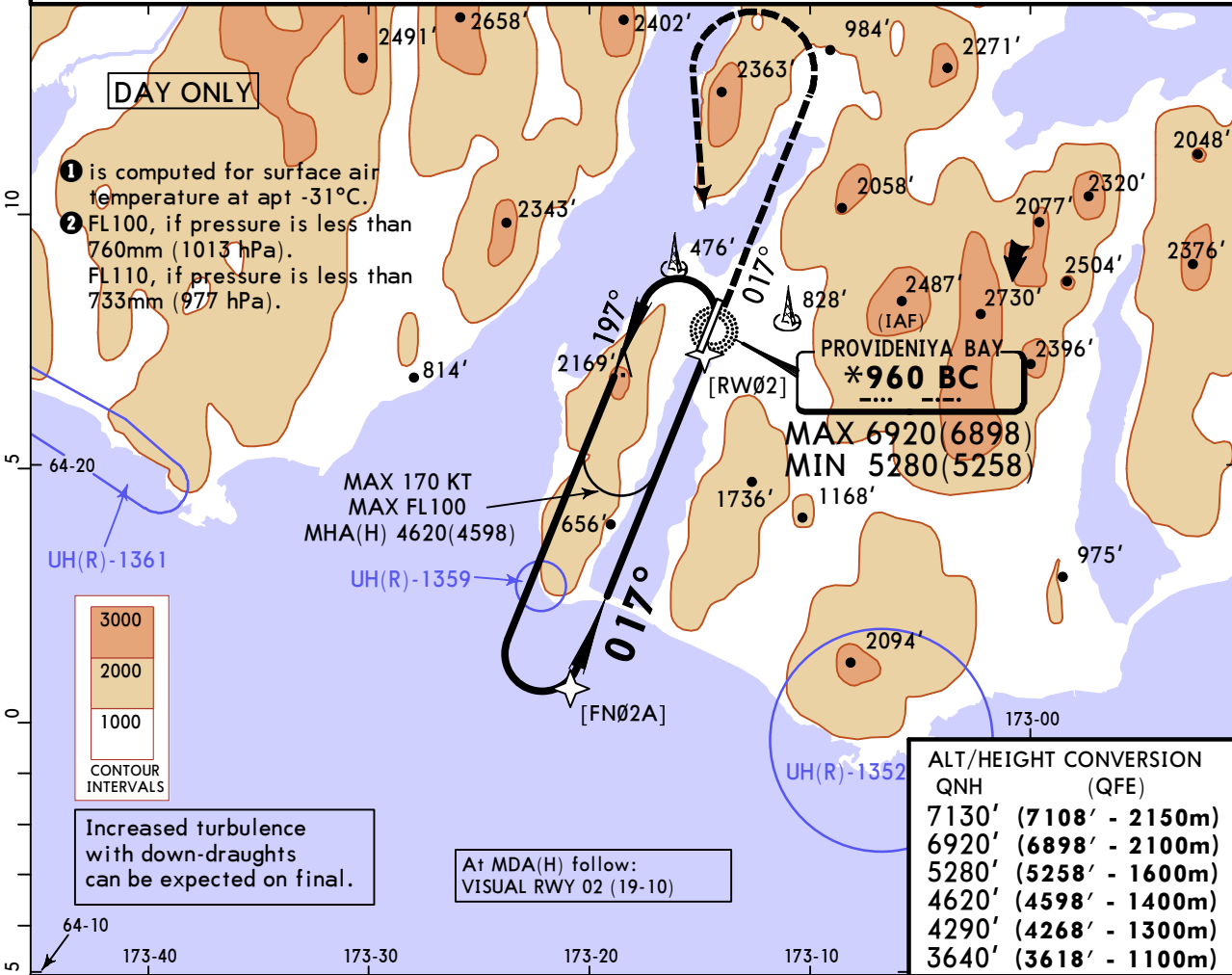
*PROVIDENIYA Tower

119.3				
NDB BC *960	Final Apch Crs 017°	[FNØ2A] 4290' (4268')	MDA(H) 3250' (3228')	Apt Elev 69' Rwy 22'

MSA ARP ①

MISSED APCH: Climb on track 017° to 3640' (3618') or above, then turn LEFT (MAX 130 KT) to NDB climbing to 4620' (4598') or above. Turn before passing MAP is prohibited.

Alt Set: MM(hPa on req) QNH on req (QFE) Trans level: FL090 ② Trans alt: 7130' (7108')



Gnd speed-Kts	70	90	100	120	140	160	3640' (3618') ↑ on 017°
Descent Angle 5.61°	696	895	995	1194	1393	1592	
MAP at NDB							

Timing not authorized for defining MAP

Std			CIRCLE-TO-LAND	
Circling height based on rwy 02 elev of 22'.				
	Max KT	MDA(H)		
A	100	3250' (3228')		V1500m
B	135	3250' (3228')		V1600m
C			NOT APPLICABLE	
D			NOT APPLICABLE	

UHMD/PVS PROVIDENIYA BAY



JEPPESSEN

PROVIDENIYA BAY, RUSSIA

8 NOV 24

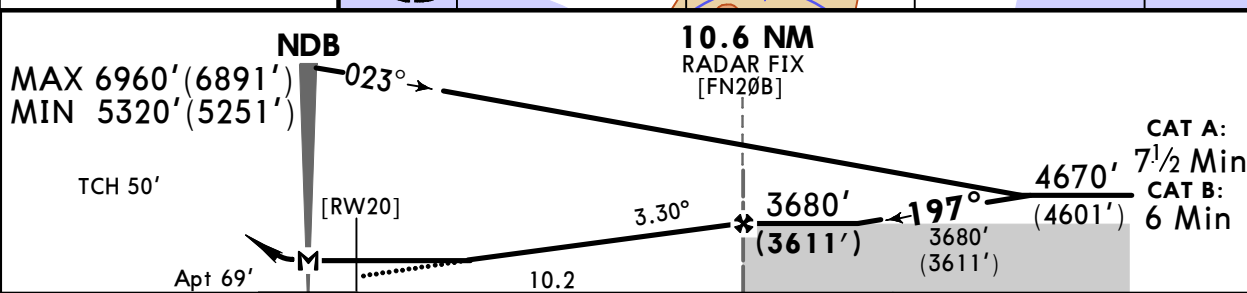
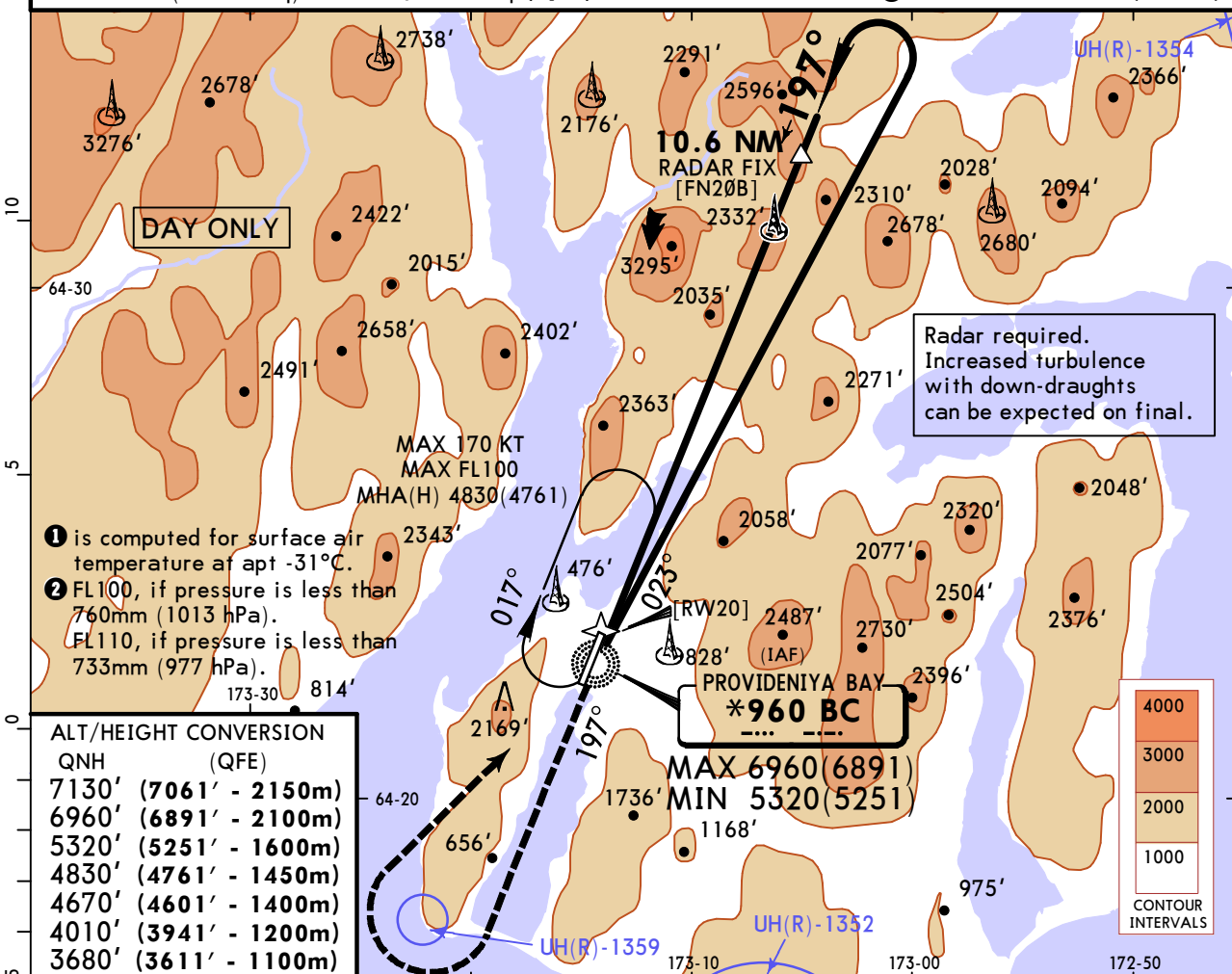
(16-3)

CAT A & B

NDB B Rwy 20

*PROVIDENIYA Tower

	119.3				
NDB BC *960	Final Apch Crs 197°	10.6 NM RADAR FIX 3680' (3611')	MDA(H) 3150' (3081')	Apt Elev 69'	
<p>MISSED APCH: Climb on track 197° to 4010' (3941') or above, then turn RIGHT to NDB climbing to 4830' (4761') or above. Turn before passing MAP is prohibited.</p>					
Alt Set: MM(hPa on req)		QNH on req (QFE)		Trans level: FL090 ②	Trans alt: 7130' (7061')



Gnd speed-Kts	70	90	100	120	140	160	4010' (3941') ↑ on 197°
Descent Angle 3.30°	409	526	584	701	817	934	
MAP at NDB							

Timing not authorized for defining MAP

Std	CIRCLE-TO-LAND	
Max KT	MDA(H)	V
A 100	3150' (3081')	V1500m
B 135	3150' (3081')	V1600m
C	NOT APPLICABLE	
D	NOT APPLICABLE	

Upon reaching OCA(H) execute circling approach.

UHMD/PVS PROVIDENIYA BAY

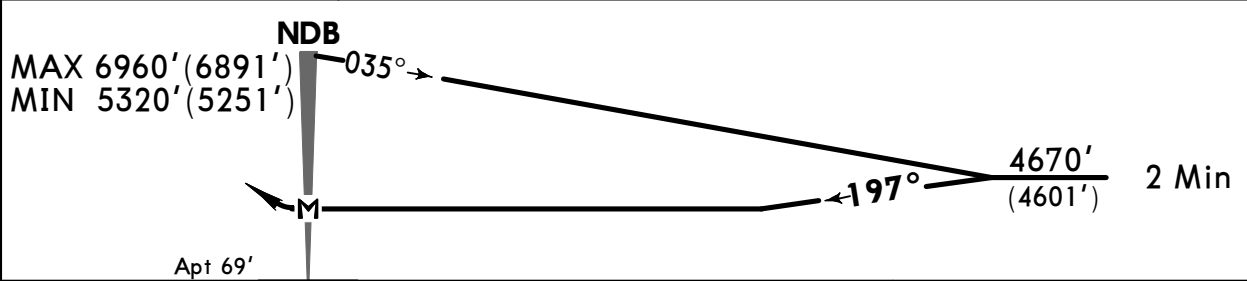
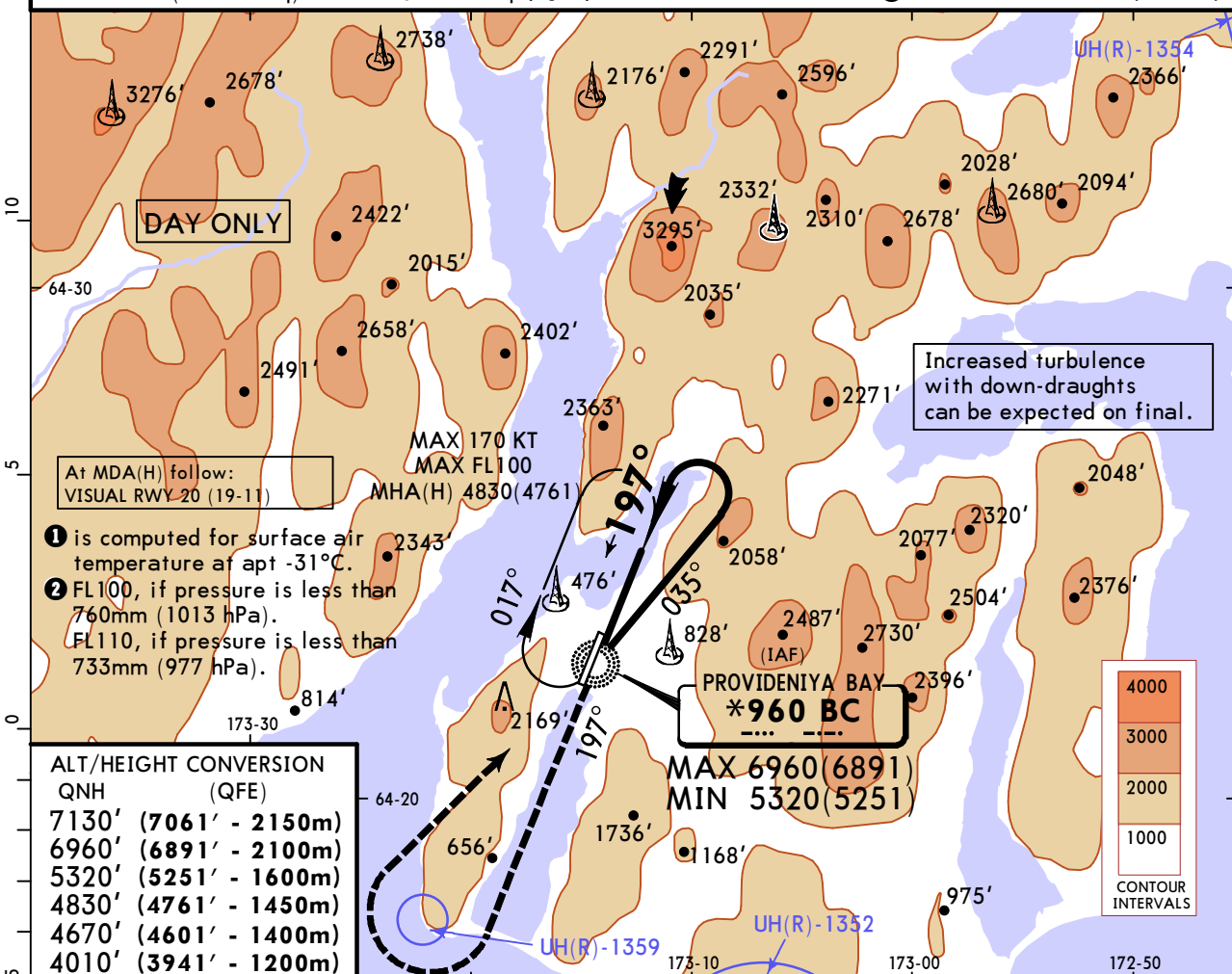


JEPPESSEN

PROVIDENIYA BAY, RUSSIA NDB A Rwy 20

8 NOV 24 (16-4) CAT A & B

*PROVIDENIYA Tower					
119.3					
NDB BC *960	Final Apch Crs 197°	No FAF	MDA(H) 3750' (3681')	Apt Elev 69'	
MISSED APCH: Climb on track 197° to 4010' (3941') or above, then turn RIGHT to NDB climbing to 4830' (4761') or above. Turn before passing MAP is prohibited.					MSA ARP 1
Alt Set: MM(hPa on req)		QNH on req (QFE)		Trans level: FL090 2 Trans alt: 7130' (7061')	



MAP at NDB Timing not authorized for defining MAP	4010' (3941') on 197°
--	-----------------------

Std CIRCLE-TO-LAND

PANS OPS	Max KT	MDA(H)	
	A 100	3750' (3681')	V1500m
	B 135	3750' (3681')	V1600m
	C	NOT APPLICABLE	
D			

UHMD/PVS PROVIDENIYA BAY



26 JUL 24 (18-1)

CAT A & B

PROVIDENIYA BAY, RUSSIA

PAR Rwy 02

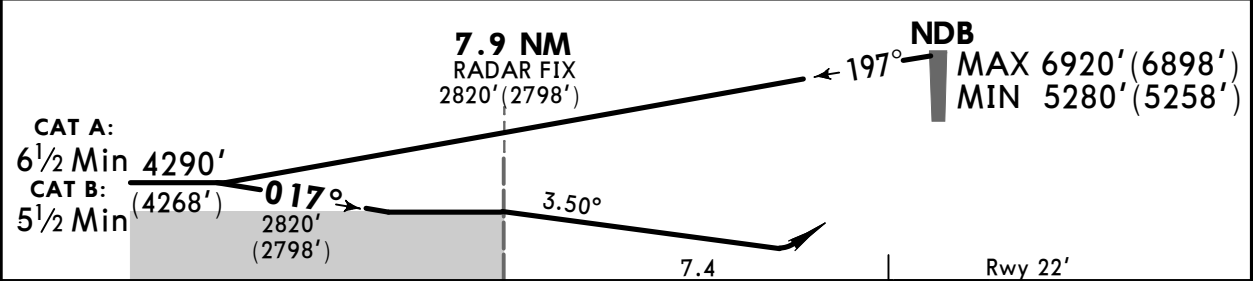
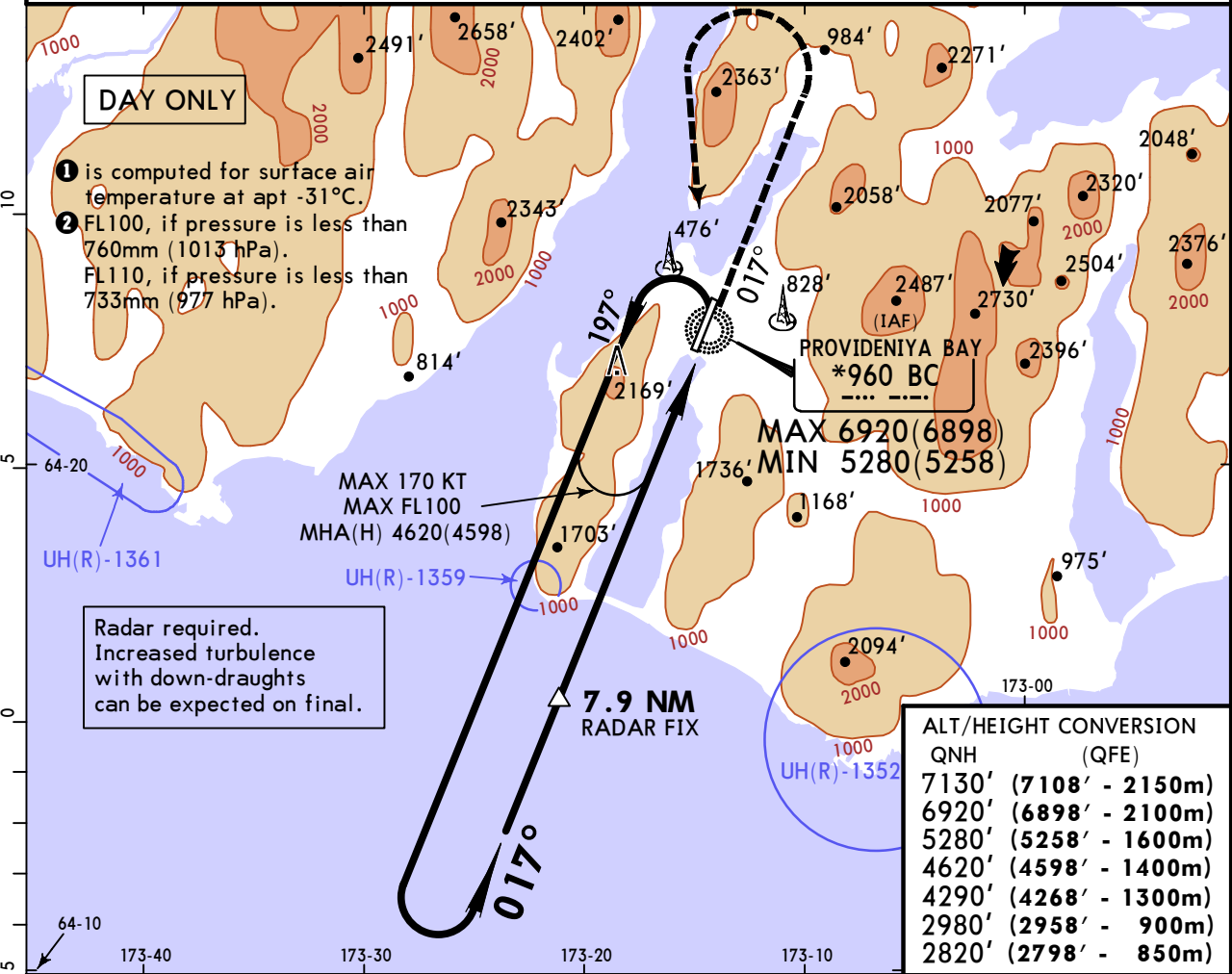
*PROVIDENIYA Tower

	119.3				
RADAR	Final Apch Crs 017°	7.9 NM RADAR FIX 2820' (2798')	DA(H) Refer to Minimums	Apt Elev 69' Rwy 22'	

MSA ARP ①

MISSED APCH: Climb on track 017° to 2980' (2958') or above, then turn LEFT (MAX 130 KT) to NDB climbing to 4620' (4598') or above. Turn before NDB is prohibited.

Alt Set: MM(hPa on req) QNH on req (QFE) Trans level: FL090 ② Trans alt: 7130' (7108')



Gnd speed-Kts	70	90	100	120	140	160			
PAR GS	3.50°	434	557	619	743	867	991		

2980' (2958') on 017°

	STRAIGHT-IN LANDING			CIRCLE-TO-LAND	
	MACG mim 4.0%	MACG mim 3.0%	MACG mim 2.5%	Max KT	MDA(H)
DA(H) 1640' (1618')	DA(H) 1706' (1684')	DA(H) 1791' (1769')	100	2740' (2671')	V1500m
R1500m	R1500m	R1500m	135	2740' (2671')	V1600m
NOT APPLICABLE	NOT APPLICABLE		C	NOT APPLICABLE	
NOT APPLICABLE	NOT APPLICABLE		D	NOT APPLICABLE	

Chart changes since cycle 07-2026

ADD = added chart, REV = revised chart, DEL = deleted chart.

ACT	PROCEDURE IDENT	INDEX	REV DATE	EFF DATE
-----	-----------------	-------	----------	----------

PROVIDENIYA BAY, (PROVIDENIYA BAY - UHMD)

TERMINAL CHART CHANGE NOTICES

No Chart Change Notices for Airport UHMD