

List of pages in this Trip Kit

Trip Kit Index

Airport Information For UUOK

Terminal Charts For UUOK

Revision Letter For Cycle 08-2026

Change Notices

Notebook

General Information

Location: KURSK RUS
ICAO/IATA: UUOK / URS
Lat/Long: N51° 45.03', E036° 17.75'
Elevation: 686 ft

Airport Use: Public
Daylight Savings: Not Observed
UTC Conversion: -3:00 = UTC
Magnetic Variation: 8.0° E

Fuel Types: Jet A-1
Customs: Yes
Airport Type: IFR
Landing Fee: Yes
Control Tower: Yes
Jet Start Unit: No
LLWS Alert: No
Beacon: No

Sunrise: 0159 Z
Sunset: 1704 Z

Runway Information

Runway: 12
Length x Width: 8205 ft x 131 ft
Surface Type: concrete
TDZ-Elev: 659 ft
Lighting: Edge, ALS

Runway: 30
Length x Width: 8205 ft x 131 ft
Surface Type: concrete
TDZ-Elev: 684 ft
Lighting: Edge, ALS

Communication Information

Kursk Tower: 120.600
Kursk Tower: 129.000 Secondary
Kursk Tower: 131.500
Kursk Approach: 129.000 Secondary
Kursk Approach: 131.500

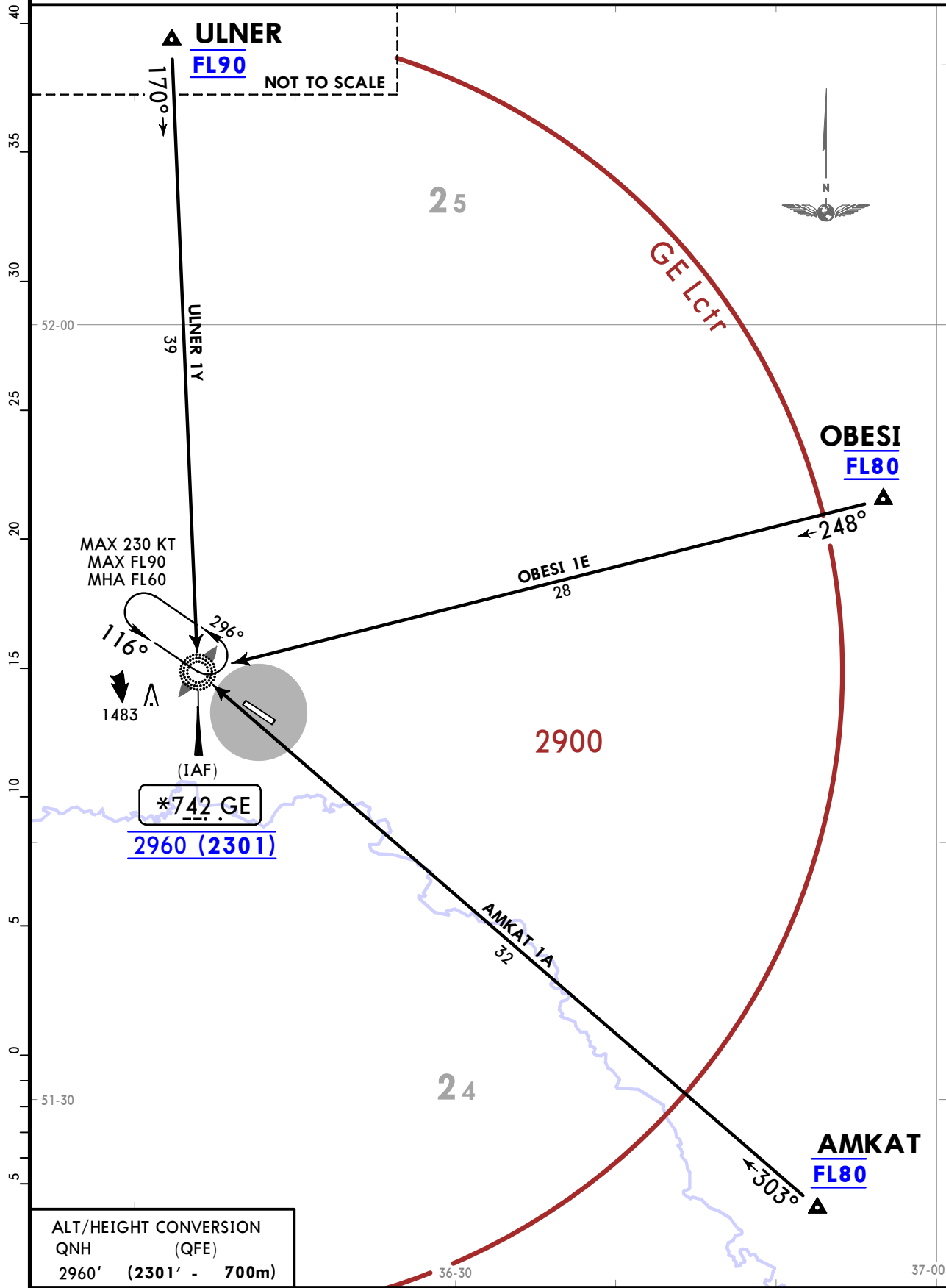
UUOK/URS
VOSTOCHNY

JEPPESEN
25 DEC 20 (10-2)

KURSK, RUSSIA
STAR

Apt Elev 686
Alt Set: MM (hPa on request) QNH on request (QFE)
Trans level: FL50
FL60 if pressure is less than 741mm (987.9 hPa)

AMKAT 1A [AMKA1A], OBESI 1E [OBES1E]
ULNER 1Y [ULNE1Y]
ARRIVALS
(RWY 12)



ALT/HEIGHT CONVERSION
QNH (QFE)
2960' (2301' - 700m)

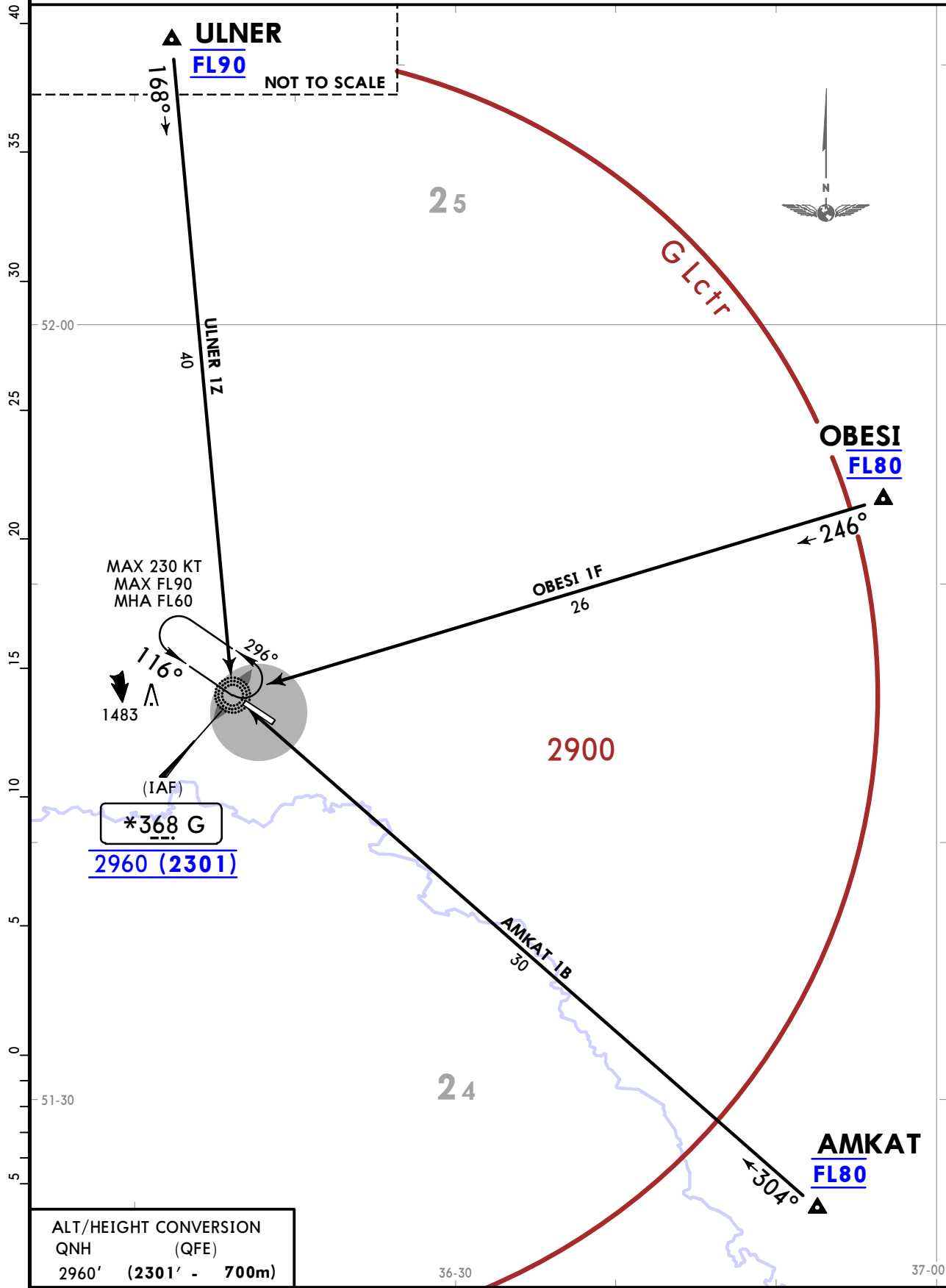
UUOK/URS
VOSTOCHNY

JEPPESEN
25 DEC 20 (10-2A)

KURSK, RUSSIA
STAR

Apt Elev 686
Alt Set: MM (hPa on request) QNH on request (QFE)
Trans level: FL50
FL60 if pressure is less than 741mm (987.9 hPa)

AMKAT 1B [AMKA1B], OBESI 1F [OBES1F]
ULNER 1Z [ULNE1Z]
ARRIVALS
(RWY 12)



ALT/HEIGHT CONVERSION
QNH (QFE)
2960' (2301' - 700m)

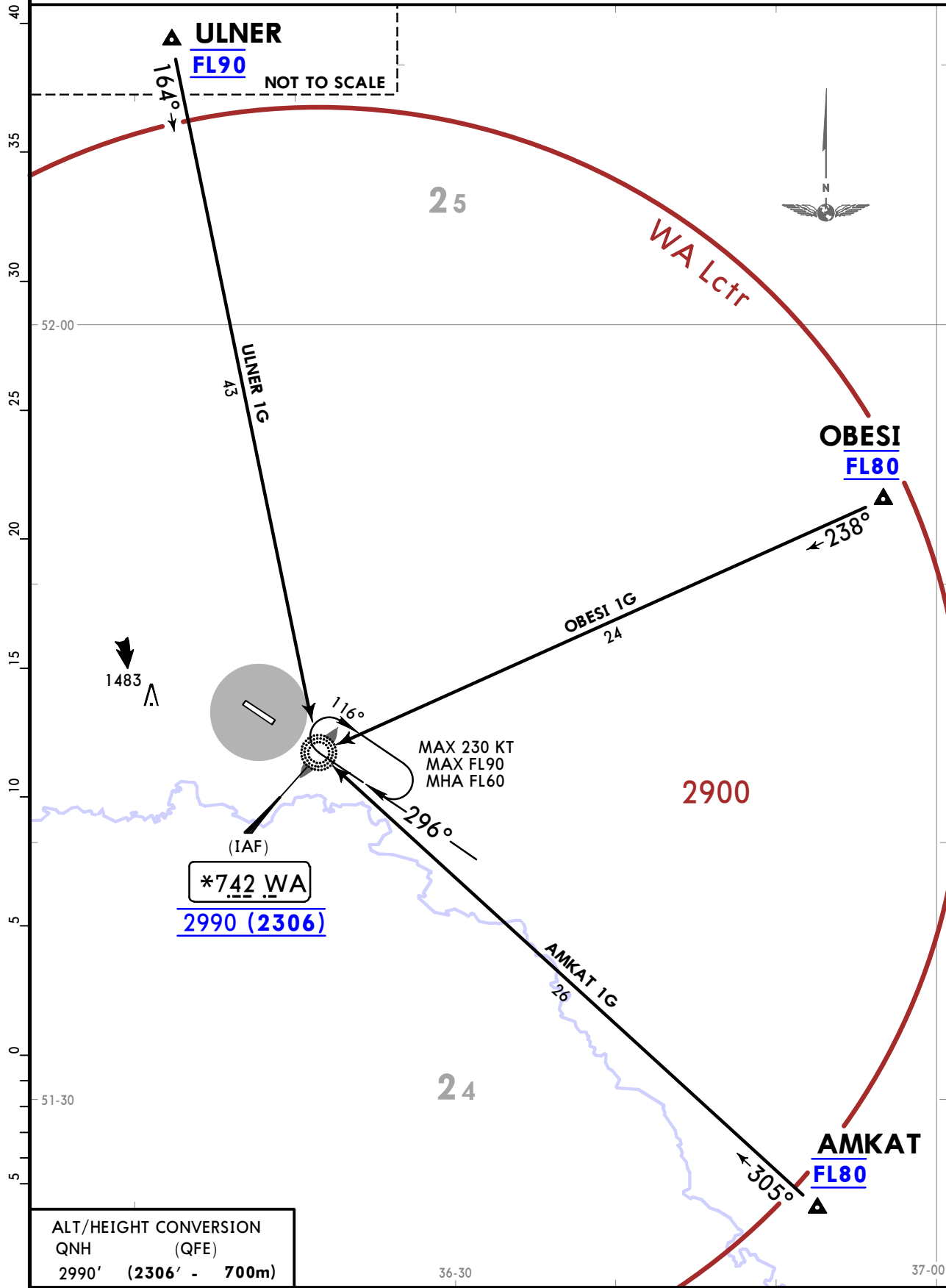
UUOK/URS
VOSTOCHNY

JEPPESEN
25 DEC 20 (10-2B)

KURSK, RUSSIA
STAR

Apt Elev 686
Alt Set: MM (hPa on request) QNH on request (QFE)
Trans level: FL50
FL60 if pressure is less than 741mm (987.9 hPa)

AMKAT 1G [AMKA1G], OBESI 1G [OBES1G]
ULNER 1G [ULNE1G]
ARRIVALS
(RWY 30)



ALT/HEIGHT CONVERSION
QNH (QFE)
2990' (2306' - 700m)

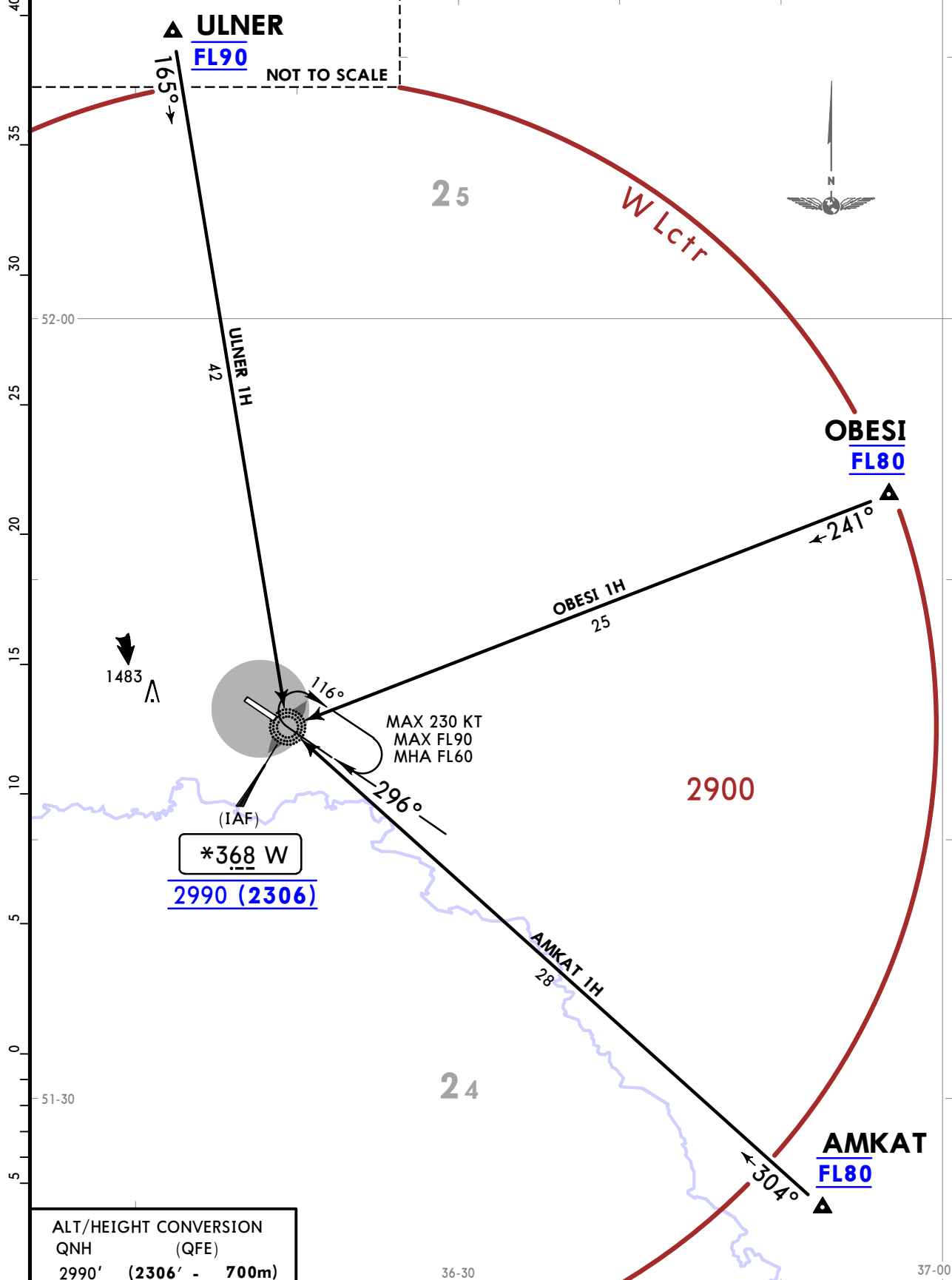
UUOK/URS
VOSTOCHNY

JEPPESEN
25 DEC 20 (10-2C)

KURSK, RUSSIA
STAR

Apt Elev 686
Alt Set: MM (hPa on request) QNH on request (QFE)
Trans level: FL50
FL60 if pressure is less than 741mm (987.9 hPa)

AMKAT 1H [AMKA1H], OBESI 1H [OBES1H]
ULNER 1H [ULNE1H]
ARRIVALS
(RWY 30)

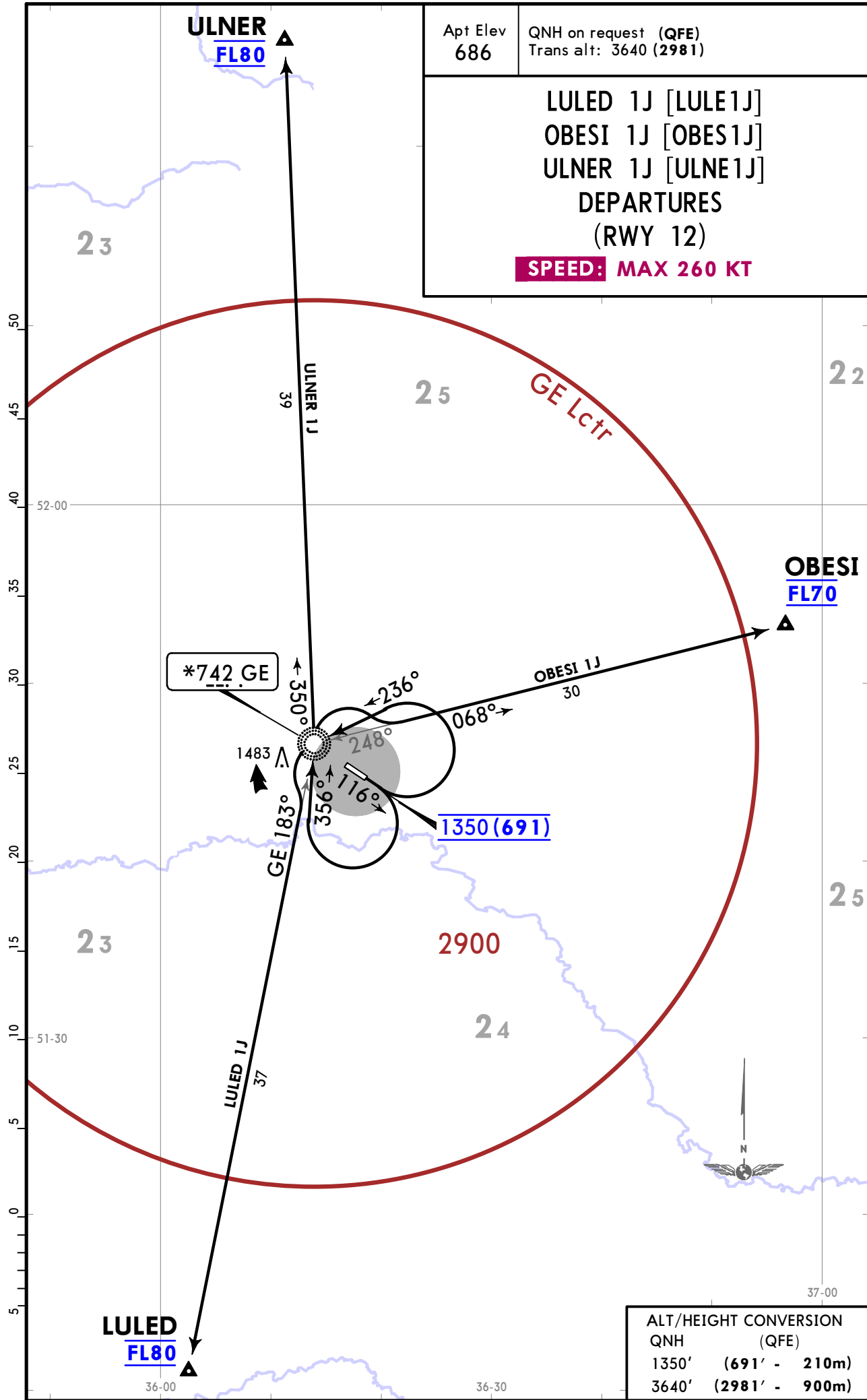


ALT/HEIGHT CONVERSION
QNH (QFE)
2990' (2306' - 700m)

UUOK/URS
VOSTOCHNY

JEPPESEN
25 DEC 20 10-3

KURSK, RUSSIA
SID



Apt Elev 686	QNH on request (QFE) Trans alt: 3640 (2981)
LULED 1J [LULE1J] OBESI 1J [OBES1J] ULNER 1J [ULNE1J] DEPARTURES (RWY 12) SPEED: MAX 260 KT	

ALT/HEIGHT CONVERSION	
QNH	(QFE)
1350'	(691' - 210m)
3640'	(2981' - 900m)

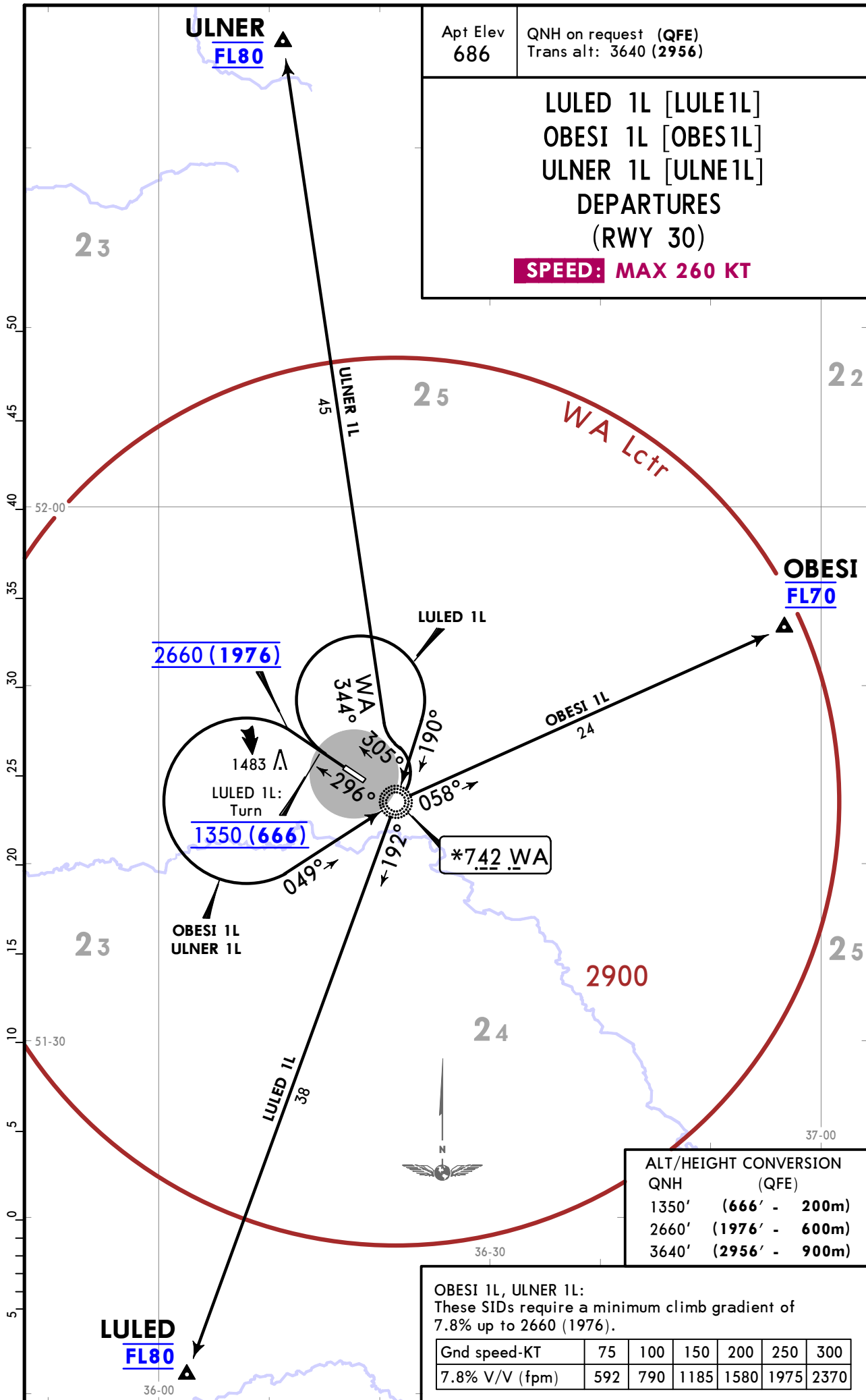
CHANGES: SIDs completely revised.

© JEPPESEN, 2020. ALL RIGHTS RESERVED.

UUOK/URS
VOSTOCHNY

JEPPESEN
25 DEC 20 (10-3A)

KURSK, RUSSIA
SID



Apt Elev 686	QNH on request (QFE) Trans alt: 3640 (2956)
LULED 1L [LULE1L] OBESI 1L [OBES1L] ULNER 1L [ULNE1L] DEPARTURES (RWY 30) SPEED: MAX 260 KT	

ALT/HEIGHT CONVERSION	
QNH	(QFE)
1350'	(666' - 200m)
2660'	(1976' - 600m)
3640'	(2956' - 900m)

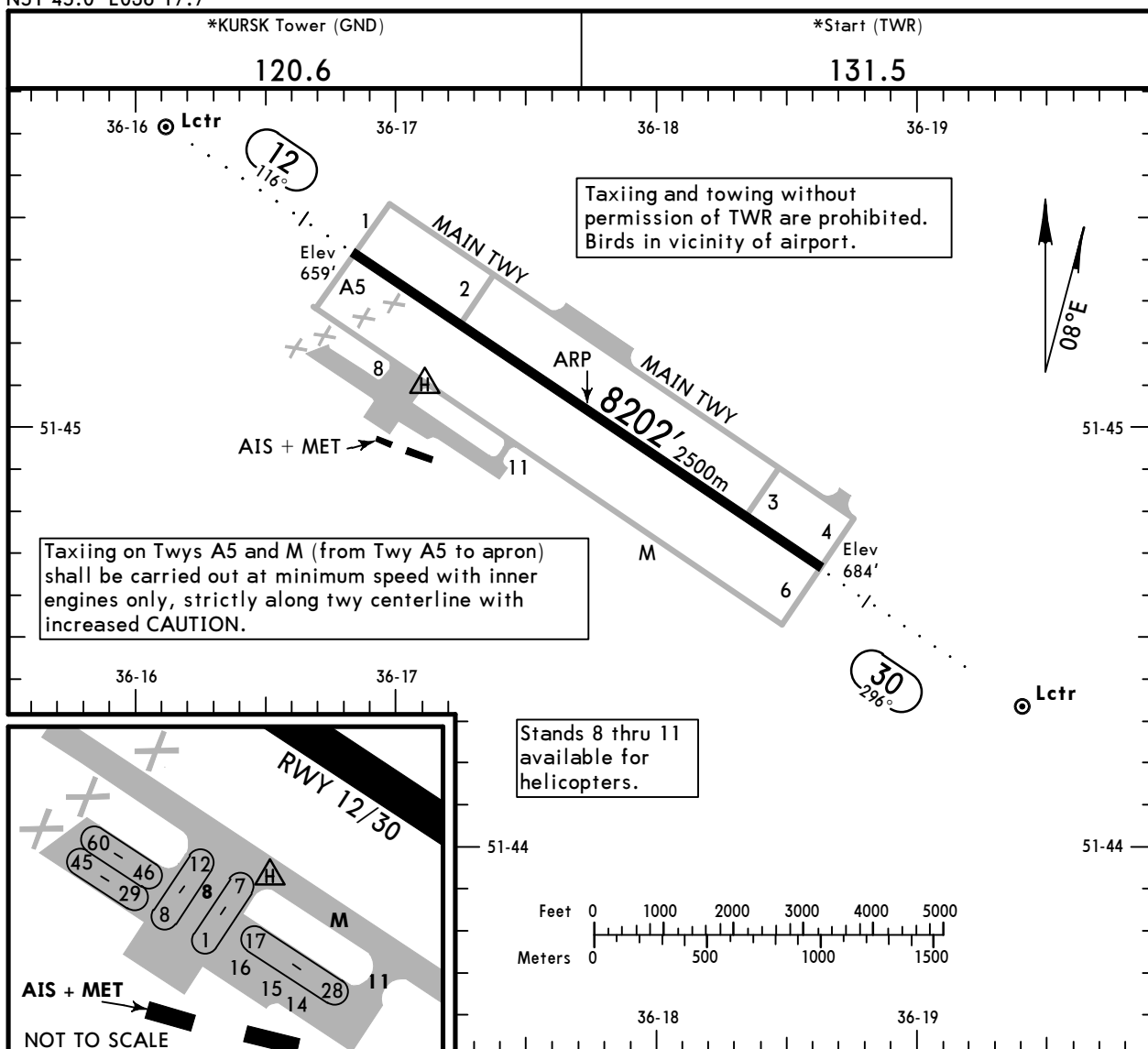
OBESI 1L, ULNER 1L:
These SIDs require a minimum climb gradient of 7.8% up to 2660 (1976).

Gnd speed-KT	75	100	150	200	250	300
7.8% V/V (fpm)	592	790	1185	1580	1975	2370

UUOK/URS
 Apt Elev **686'**
 N51 45.0 E036 17.7

JEPPesen
 25 DEC 20 **(10-9)**

KURSK, RUSSIA
VOSTOCHNY



ADDITIONAL RUNWAY INFORMATION

RWY				USABLE LENGTHS		TAKE-OFF	WIDTH
				Threshold	Glide Slope		
12	RL (60m)	ALS	PAPI-L (angle 2.67°)			8038'	131'
30	RL (60m)	ALS	PAPI-L (angle 3.00°)		7109' 2167m	2450m ①	40m

① First 164'/50m unusable for take-off.

TAKE-OFF

AIR CARRIER (JAA)
All Rwys

	LVP must be in force RCLM (DAY only) or RL	RCLM (DAY only) or RL
A		
B	250m	400m
C		
D	300m	

UUOK/URS



Standard
KURSK, RUSSIA
VOSTOCHNY

STRAIGHT-IN RWY	A	B	C	D	
12	① NDB Z or Y	1370' (711') R1500m	1370' (711') R1500m	1370' (711') R2400m	1370' (711') R2400m
	NDB Z or Y	1370' (711') R3300m	1370' (711') R3300m	1370' (711') R3500m	1370' (711') R3500m
	ALS out	R3500m	R3500m	R3700m	R3700m
30	ILS Z or Y	884' (200')	894' (210')	901' (217')	911' (227')
	FULL	R1000m	R1000m	R1000m	R1000m
	ALS out	R1200m	R1200m	R1200m	R1200m
	LOC	NOT AUTH	NOT AUTH	NOT AUTH	NOT AUTH
	① NDB Z or Y	1090' (406') R1500m	1090' (406') R1500m	1090' (406') R1700m	1090' (406') R1700m
	ALS out	R1500m	R1500m	R1900m	R1900m
NDB Z or Y	1090' (406') R1900m	1090' (406') R1900m	1090' (406') R2100m	1090' (406') R2100m	
	ALS out	R2100m	R2100m	R2300m	R2300m

① Continuous Descent Final Approach.

CIRCLE-TO-LAND	100 KT	135 KT	180 KT	205 KT
	1310' (624')	1480' (794')	1770' (1084')	1810' (1124')
After NDB 12	1550' (864')	1550' (864')	1780' (1094')	1810' (1124')
	V1500m②	V1600m②	V2400m②	V3600m②

② or higher minimums of preceding straight-in approach.

UUOK/URS

 **JEPPESEN**
25 DEC 20 **(10-9S1)**

Standard
KURSK, RUSSIA
VOSTOCHNY

TAKE-OFF

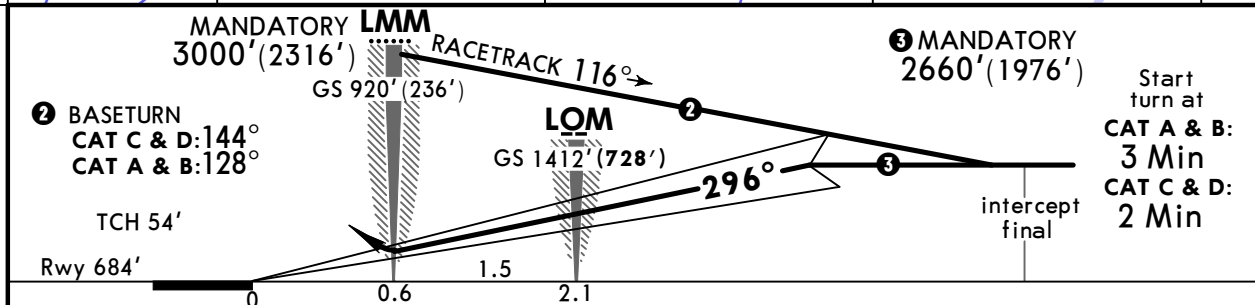
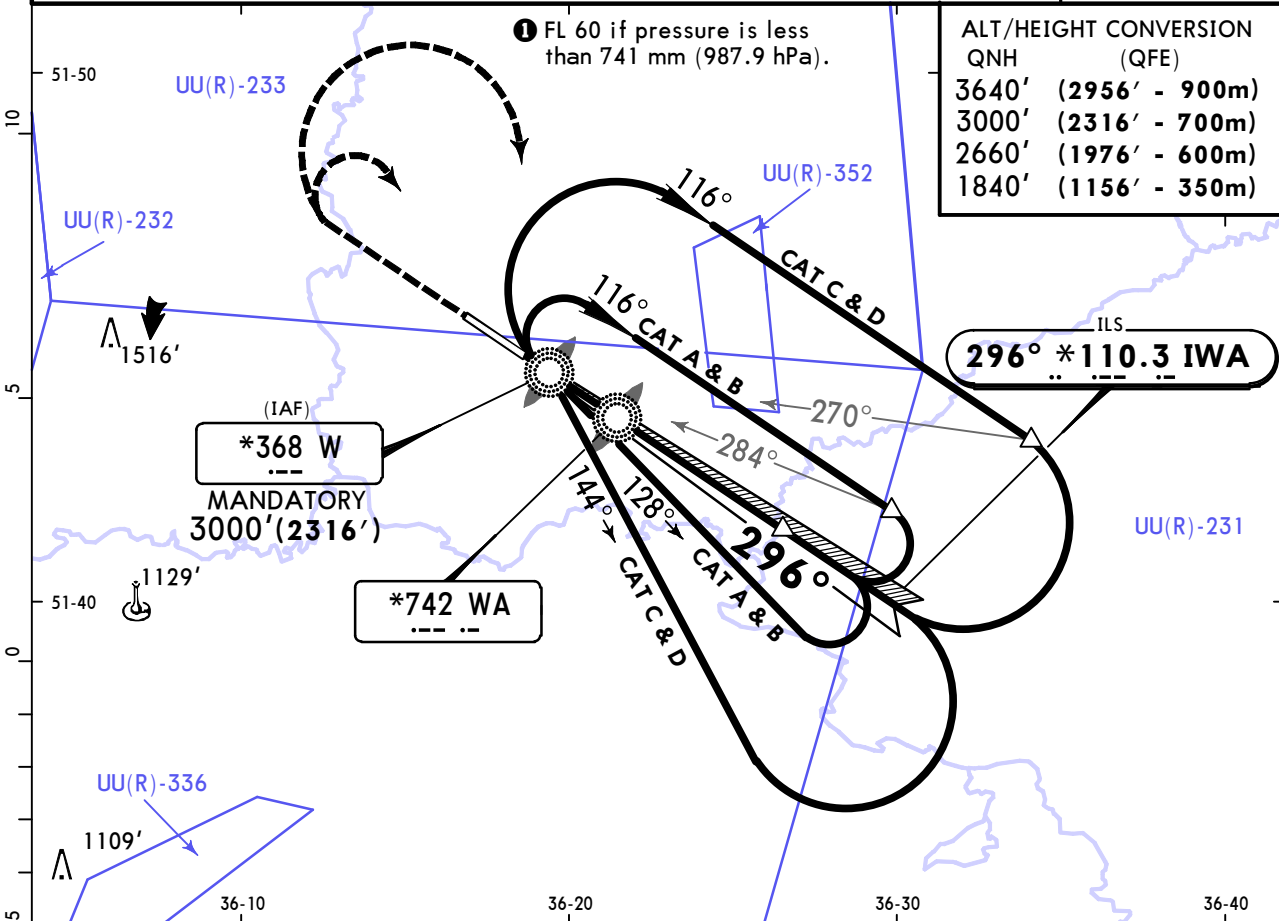
	Low Visibility Take-off		
	Day: RL & RCLM Night: RL	Day: RL or RCLM Night: RL	Adequate vis ref (Day only)
A			
B			
C	R300m	400m	500m
D			


UUOK/URS
VOSTOCHNY

JEPPESEN
25 DEC 20 **(11-1)**

KURSK, RUSSIA
ILS Z Rwy 30

BRIEFING STRIP™	*KURSK Approach		*KURSK Start (TWR)		*Ground
	131.5		131.5		120.6
	LOC IWA *110.3	Final Apch Crs 296°	LOM 1412'(728')	ILS DA(H) Refer to Minimums	Apt Elev 686' Rwy 684'
MISSED APCH: Climb on 296° to 1840'(1156'), turn RIGHT LMM climbing to 2660'(1976'), then according to chart.					
Alt Set: MM (hPa on req) QNH on req (QFE) Trans level: FL 50 ① Trans alt: 3640'(2956')					MSA W Lctr



Gnd speed-Kts	70	90	100	120	140	160	ALS  1840' (1156') on 296°
GS	3.00°	372	478	531	637	849	

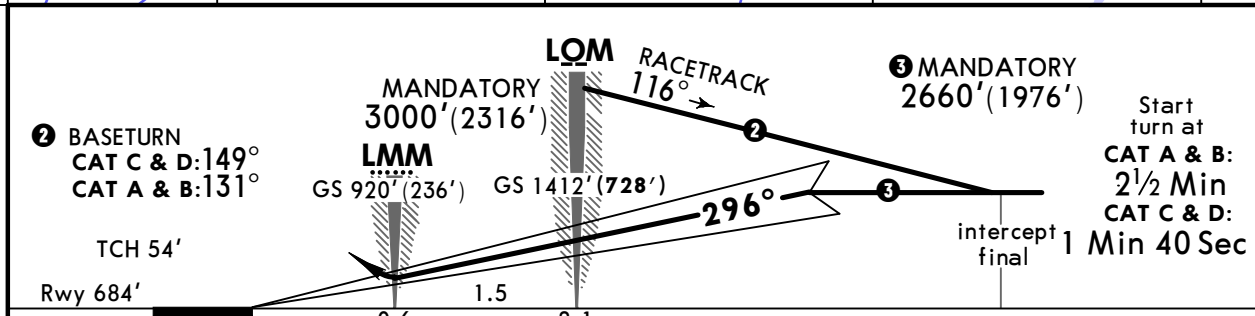
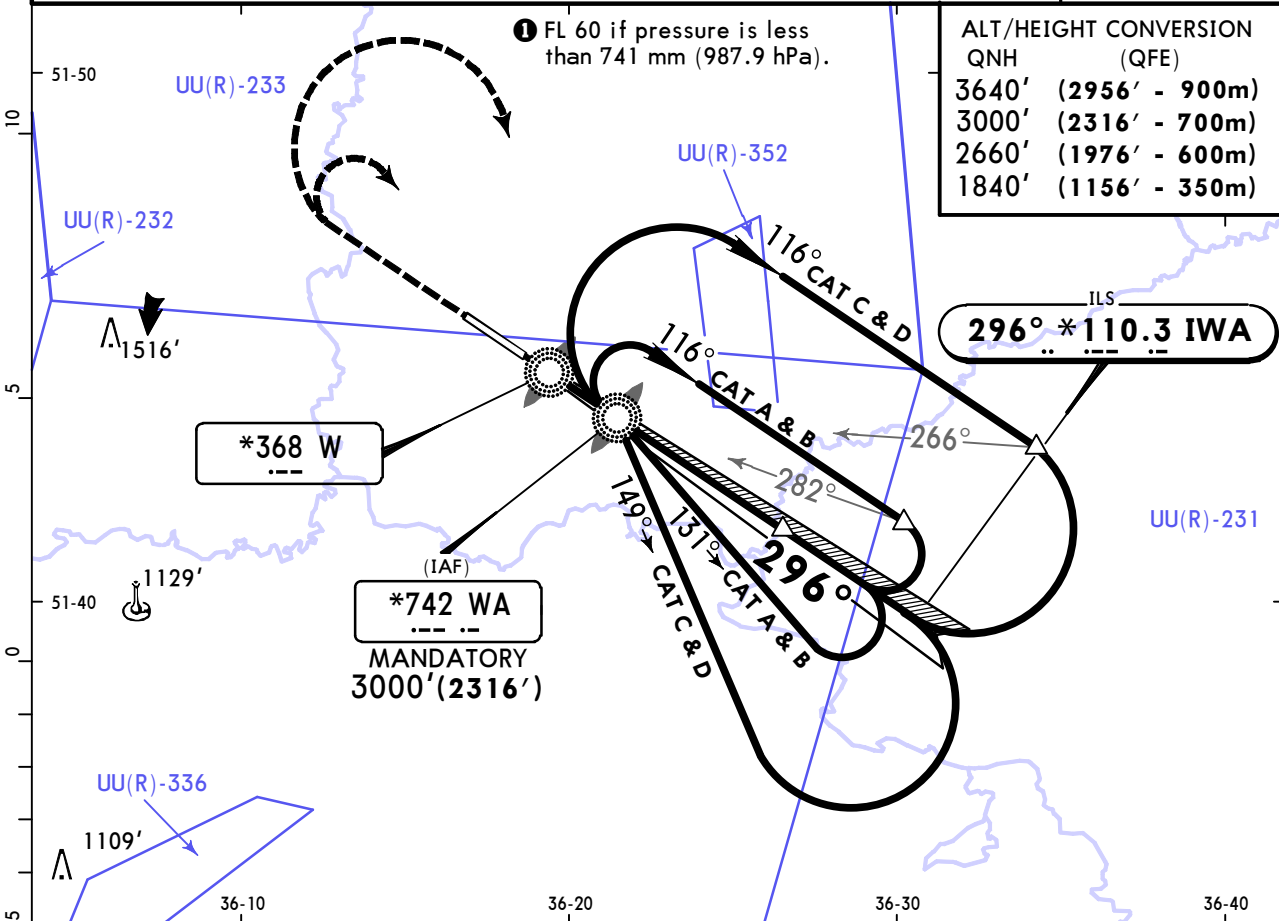
PANS OPS	STRAIGHT-IN LANDING RWY 30		LOC (GS out)	CIRCLE-TO-LAND		
	ILS A: 884'(200') c: 901'(217') DA(H) B: 894'(210') D: 911'(227') FULL ALS out			NOT AUTHORIZED	Max Kts	MDA(H)
	A	1200m			100	1310'(624') 1600m
	B				135	1480'(794') 2000m
C	180				1770'(1084') 4800m	
D	205			1810'(1124') 4800m		

UUOK/URS
VOSTOCHNY

JEPPESEN
25 DEC 20 **(11-2)**

KURSK, RUSSIA
ILS Y Rwy 30

*KURSK Approach		*KURSK Start (TWR)		*Ground	
131.5		131.5		120.6	
LOC IWA *110.3	Final Apch Crs 296°	LOM 1412'(728')	ILS DA(H) Refer to Minimums	Apt Elev 686' Rwy 684'	2900
MISSED APCH: Climb on 296° to 1840'(1156'), turn RIGHT to LOM climbing to 2660'(1976'), then according to chart.					
Alt Set: MM (hPa on req) QNH on req (QFE) Trans level: FL 50 1 Trans alt: 3640'(2956')					MSA WA NDB



Gnd speed-Kts	70	90	100	120	140	160	ALS 1840' (1156') on 296°
GS	3.00°	372	478	531	637	849	

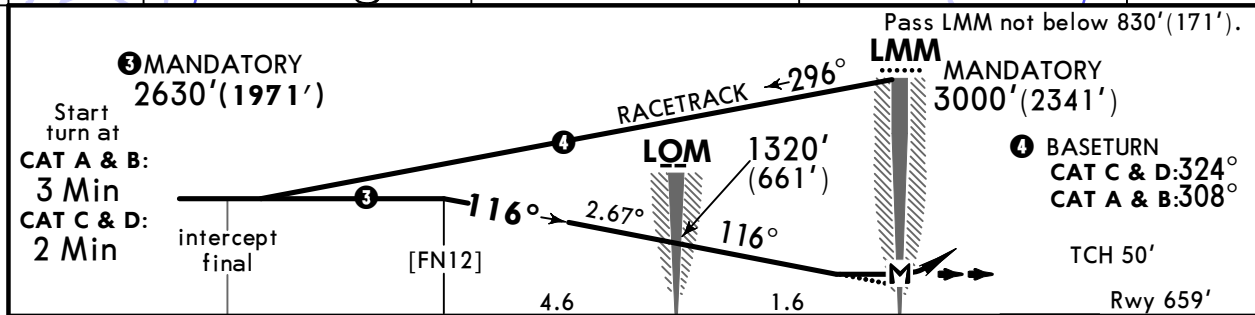
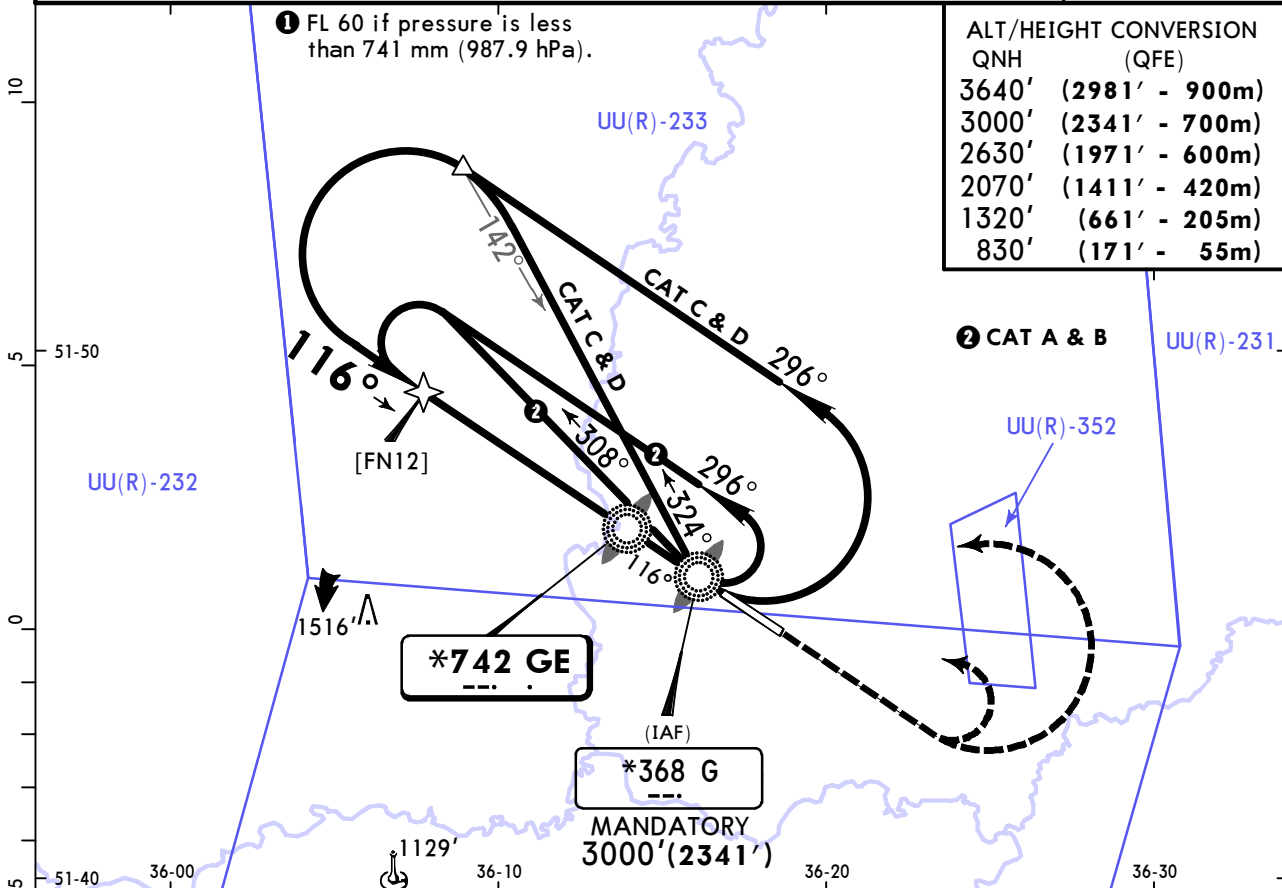
STRAIGHT-IN LANDING RWY 30		CIRCLE-TO-LAND		
ILS A: 884'(200') C: 901'(217') DA(H) B: 894'(210') D: 911'(227') FULL ALS out		LOC (GS out) NOT AUTHORIZED		
PANS OPS	A	1200m	Max Kts	MDA(H)
	B		100	1310'(624') 1600m
	C		135	1480'(794') 2000m
	D		180	1770'(1084') 4800m
			205	1810'(1124') 4800m

UUOK/URS
VOSTOCHNY

JEPPESEN
25 DEC 20 **(16-1)**

KURSK, RUSSIA
NDB Z Rwy 12

*KURSK Approach		*KURSK Start (TWR)		*Ground	
131.5		131.5		120.6	
NDB GE	Final Apch Crs	No FAF	MDA(H)	Apt Elev 686'	2900
*742	116°		1370'(711')	Rwy 659'	
MISSED APCH: Climb on 116° to 2070'(1411'), turn LEFT to LMM climbing to 2630'(1971'), then according to chart.					MSA G Lctr
Alt Set: MM (hPa on req) QNH on req (QFE) Trans level: FL 50 ① Trans alt: 3640'(2981')					



Gnd speed-Kts	70	90	100	120	140	160	ALS	2070' (1411') ↑ on 116°
Descent Angle	2.67°	331	425	472	567	756		
MAP at LMM								

STRAIGHT-IN LANDING RWY 12				CIRCLE-TO-LAND	
MDA(H) 1370'(711')					
ALS out				Max Kts	MDA(H)
A	1600m			100	1550'(864') 1600m
B	1600m			135	1550'(864') 2000m
C	3200m			180	1780'(1094') 4800m
D	3600m			205	1810'(1124') 4800m

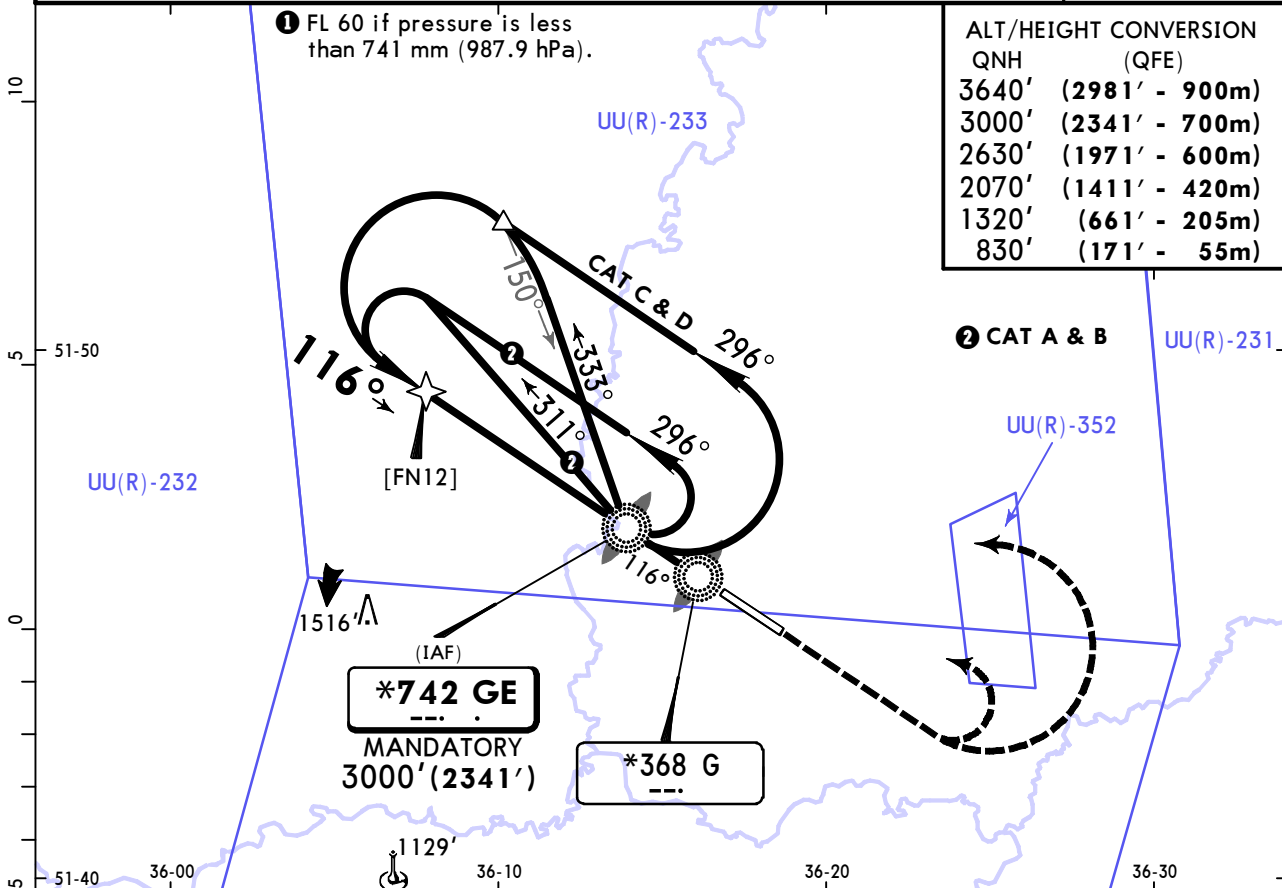
PANS OPS

UUOK/URS
VOSTOCHNY

JEPPESEN
25 DEC 20 **(16-2)**

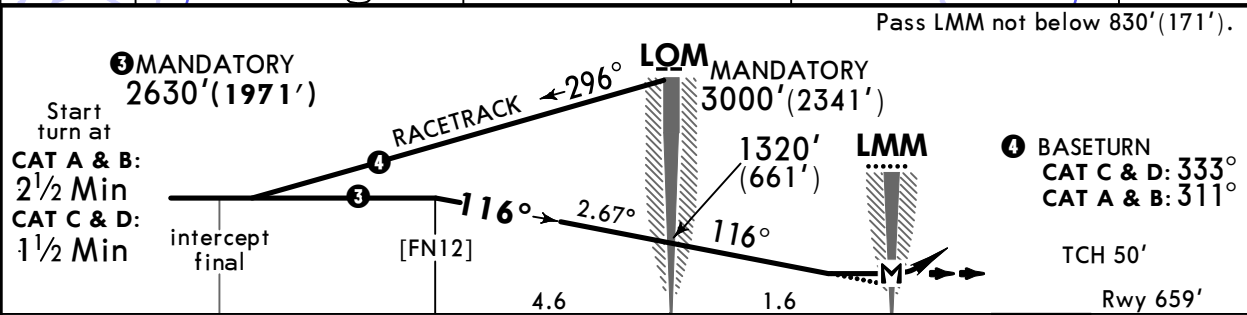
KURSK, RUSSIA
NDB Y Rwy 12

*KURSK Approach		*KURSK Start (TWR)		*Ground	
131.5		131.5		120.6	
NDB GE	Final Apch Crs	No FAF	MDA(H)	Apt Elev 686'	2900
*742	116°		1370'(711')	Rwy 659'	
MISSED APCH: Climb on 116° to 2070'(1411'), turn LEFT to LOM climbing to 2630'(1971'), then according to chart.					MSA GE NDB
Alt Set: MM (hPa on req) QNH on req (QFE) Trans level: FL 50 ① Trans alt: 3640'(2981')					



ALT/HEIGHT CONVERSION

QNH	(QFE)
3640'	(2981' - 900m)
3000'	(2341' - 700m)
2630'	(1971' - 600m)
2070'	(1411' - 420m)
1320'	(661' - 205m)
830'	(171' - 55m)



Gnd speed-Kts	70	90	100	120	140	160	ALS	2070' (1411') on 116°
Descent Angle 2.67°	331	425	472	567	661	756		
MAP at LMM								

STRAIGHT-IN LANDING RWY 12		CIRCLE-TO-LAND		
MDA(H) 1370'(711')		ALS out		
PANS OPS	A	4300m	Max Kts	MDA(H)
	B		100	1550'(864') 1600m ①
	C		135	1550'(864') 2000m ①
	D		180	1780'(1094') 4800m
			205	1810'(1124') 4800m

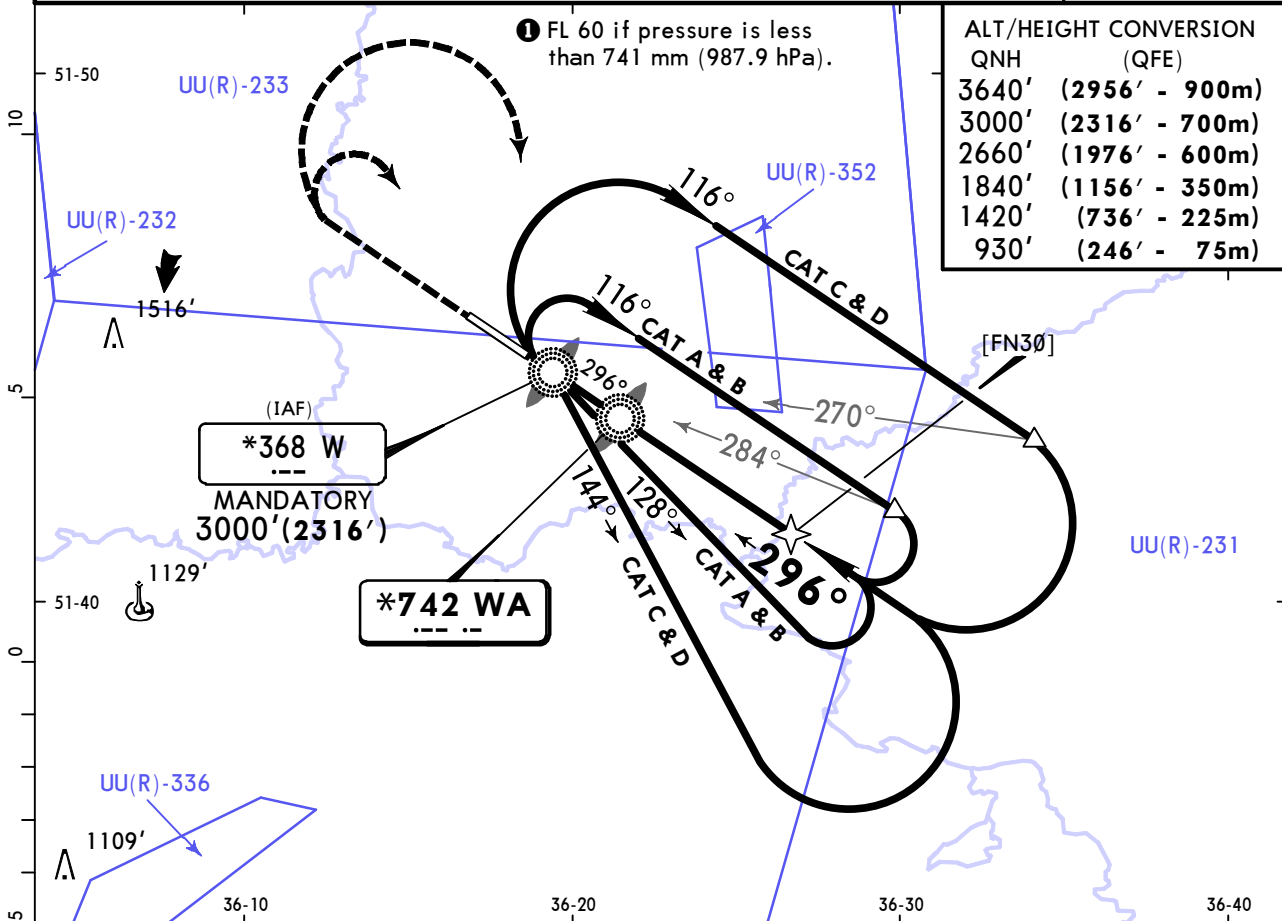
① or higher straight-in minimums.
CHANGES: Procedure title. Rwy elev. Missed apch. FAF. Altitudes. Minimums. © JEPPESEN 2007, 2020. ALL RIGHTS RESERVED.

UUOK/URS
VOSTOCHNY

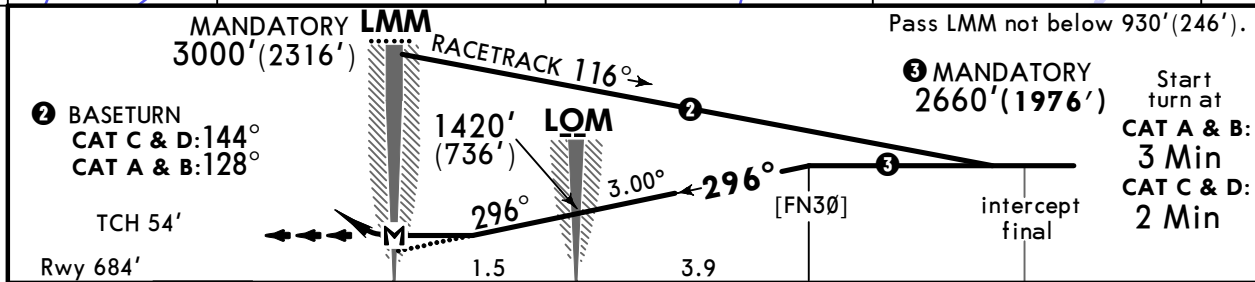
JEPPESEN
25 DEC 20 **(16-3)**

KURSK, RUSSIA
NDB Z Rwy 30

*KURSK Approach		*KURSK Start (TWR)		*Ground	
131.5		131.5		120.6	
NDB WA *742	Final Apch Crs 296°	No FAF	MDA(H) 1090'(406')	Apt Elev 686' Rwy 684'	2900
MISSED APCH: Climb on 296° to 1840'(1156'), turn RIGHT to LMM climbing to 2660'(1976'), then according to chart.					
Alt Set: MM (hPa on req) QNH on req (QFE) Trans level: FL 50 ① Trans alt: 3640'(2956')					MSA W Lctr



QNH	(QFE)
3640'	(2956' - 900m)
3000'	(2316' - 700m)
2660'	(1976' - 600m)
1840'	(1156' - 350m)
1420'	(736' - 225m)
930'	(246' - 75m)



Gnd speed-Kts	70	90	100	120	140	160	ALS 1840' (1156') on 296°
Descent Angle 3.00°	372	478	531	637	743	849	
MAP at LMM							

STRAIGHT-IN LANDING RWY 30			CIRCLE-TO-LAND	
MDA(H) 1090'(406')			ALS out	
A			Max Kts	MDA(H)
B	1600m		100	1310'(624') 1600m
C			135	1480'(794') 2000m
D	2000m		180	1770'(1084') 4800m
			205	1810'(1124') 4800m

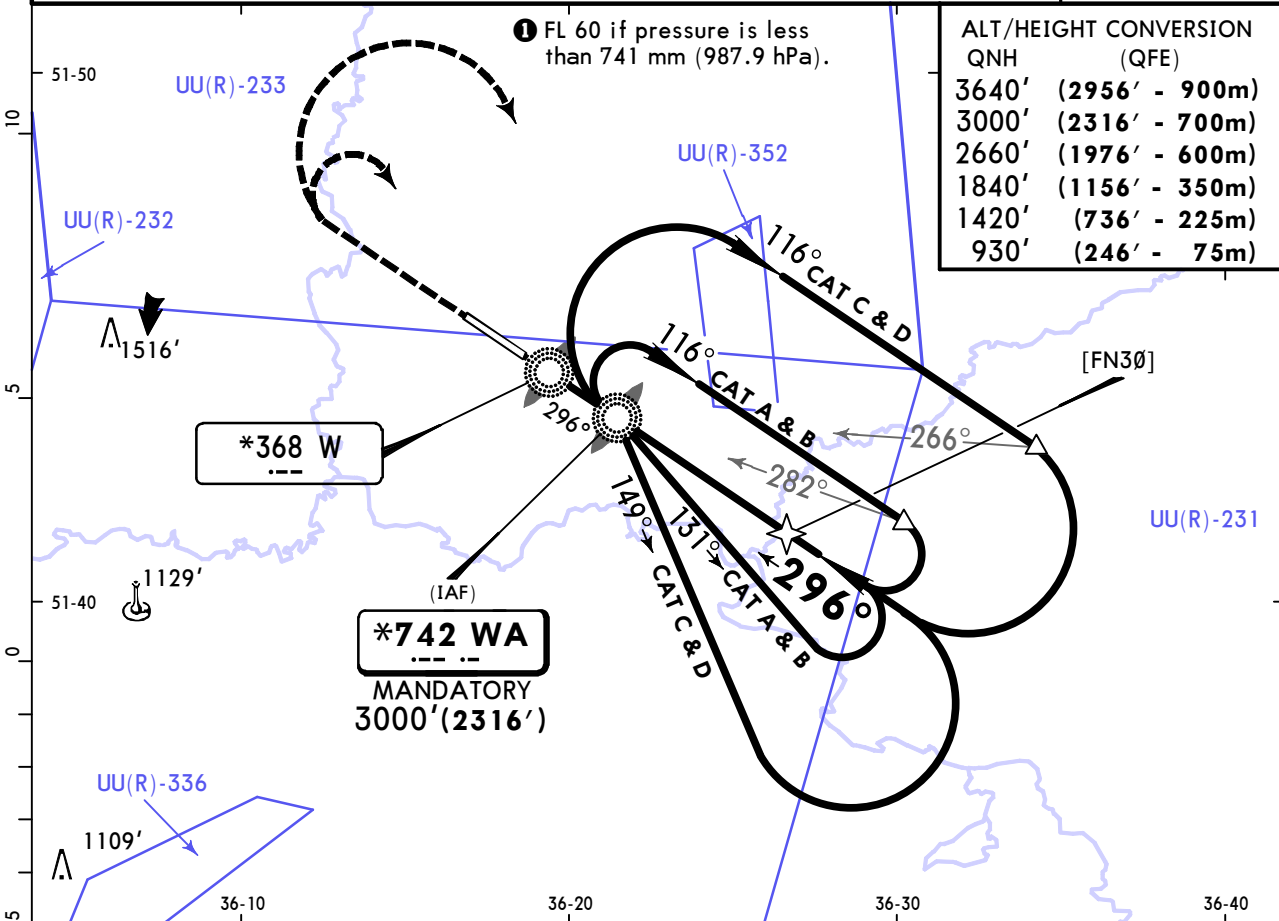
PANS OPS

UUOK/URS
VOSTOCHNY

JEPPESEN
25 DEC 20 **(16-4)**

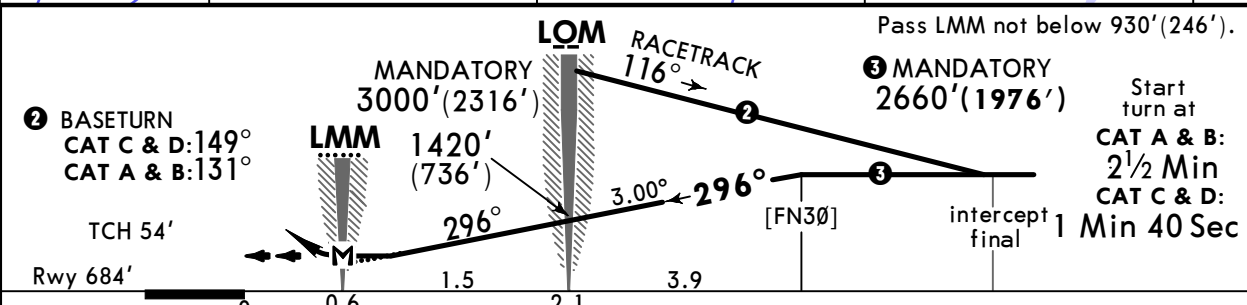
KURSK, RUSSIA
NDB Y Rwy 30

*KURSK Approach		*KURSK Start (TWR)		*Ground	
131.5		131.5		120.6	
NDB WA *742	Final Apch Crs 296°	No FAF	MDA(H) 1090'(406')	Apt Elev 686' Rwy 684'	2900
MISSED APCH: Climb on 296° to 1840'(1156'), turn RIGHT LOM climbing to 2660'(1976'), then according to chart.					
Alt Set: MM (hPa on req) QNH on req (QFE) Trans level: FL 50 1 Trans alt: 3640'(2956')					MSA WA NDB



ALT/HEIGHT CONVERSION

QNH	(QFE)
3640'	(2956' - 900m)
3000'	(2316' - 700m)
2660'	(1976' - 600m)
1840'	(1156' - 350m)
1420'	(736' - 225m)
930'	(246' - 75m)



Gnd speed-Kts	70	90	100	120	140	160
Descent Angle 3.00°	372	478	531	637	743	849
MAP at LMM						

ALS **1840'** (1156') on **296°**

STRAIGHT-IN LANDING RWY 30		CIRCLE-TO-LAND	
MDA(H) 1090'(406')		ALS out	
A		Max Kts	MDA(H)
B		100	1310'(624') 1600m 1
C	2000m	135	1480'(794') 2000m
D		180	1770'(1084') 4800m
		205	1810'(1124') 4800m

Chart changes since cycle 07-2026

ADD = added chart, REV = revised chart, DEL = deleted chart.

ACT	PROCEDURE IDENT	INDEX	REV DATE	EFF DATE
KURSK, (VOSTOCHNY - UUOK)				

TERMINAL CHART CHANGE NOTICES

Chart Change Notices for Airport UUOK

Type: Terminal

Effectivity: Temporary

Begin Date: 20201225

End Date: Until Further Notice

(10-3A) Initial turn altitudes under clarification, caution is advised.