

List of pages in this Trip Kit

Trip Kit Index

Airport Information For UWKE

Terminal Charts For UWKE

Revision Letter For Cycle 08-2026

Change Notices

Notebook

General Information

Location: NIZHNEKAMSK RUS
ICAO/IATA: UWKE / NBC
Lat/Long: N55° 33.88', E052° 05.55'
Elevation: 643 ft

Airport Use: Public
Daylight Savings: Not Observed
UTC Conversion: -3:00 = UTC
Magnetic Variation: 14.0° E

Fuel Types: Jet A-1
Customs: Yes
Airport Type: IFR
Landing Fee: Yes
Control Tower: Yes
Jet Start Unit: No
LLWS Alert: No
Beacon: No

Sunrise: 0042 Z
Sunset: 1615 Z

Runway Information

Runway: 03
Length x Width: 8199 ft x 138 ft
Surface Type: asphalt
TDZ-Elev: 633 ft
Lighting: Edge, ALS

Runway: 21
Length x Width: 8199 ft x 138 ft
Surface Type: asphalt
TDZ-Elev: 640 ft
Lighting: Edge, ALS

Communication Information

ATIS: 134.200
Begishevo Start Tower: 121.200
Begishevo Start Tower: 129.000 Secondary
Begishevo Apron Ramp/Taxi: 118.000
Begishevo Transit Operations: 131.900
Begishevo Tower/Radar Radar: 129.000 Secondary
Begishevo Tower/Radar Radar: 127.900 At 3950 ft

UWKE/NBC
BEGISHEVO

JEPPESEN

1 SEP 23

10-1P

Eff 7 Sep

NIZHNEKAMSK, RUSSIA

AIRPORT BRIEFING

1. GENERAL

1.1. ATIS

ATIS 134.2

1.2. LOW VISIBILITY PROCEDURES (LVP)

LVP are implemented when RVR is below 550m.

Flight crews will be informed about LVP initiation by ATIS or ATS controller by the phrase: "Low visibility procedures in progress, check your minimum".

Flight crews of arriving ACFT must report execution of landing.

Departing ACFT shall taxi via taxi route to the beginning of the active RWY.

When taxiing on the apron and on the maneuvering area flight crew should constantly check ACFT position. In case of difficulty or doubt in determining ACFT position, it is necessary to stop taxiing and report to START or TOWER controller.

After obtaining controller's clearance to hold and (or) occupy RWY (TWY), flight crew must read back active RWY (TWY) designator.

ACFT shall take off only from the RWY beginning, stop at the line-up position is mandatory.

In case departing ACFT need to occupy RWY (line up position) for more than 1minute, flight crews must inform START or TOWER controller.

1.3. TAXI PROCEDURES

Movement on APT is coordinated by START or TOWER controller.

Taxiing and towing without START controller's clearance are prohibited.

Taxiing and towing shall be carried out along taxiway centerlines and apron TWY guidance lines.

1.4. PARKING INFORMATION

Taxiing and towing into/out of stands 1 thru 27 not along apron TWY guidance lines is permitted by arrangement with APT operator after the Follow-me car.

Parking on these stands by ATC controller's instruction.

Stands 1 thru 27 available for helicopters.

Stand 1 available for ACFT that need to be isolated.

1.5. OTHER INFORMATION

Turns on RWY shall be carried out at minimum radius of turn.

Birds in vicinity of APT.

UWKE/NBC
BEGISHEVO

JEPPESEN

NIZHNEKAMSK, RUSSIA

1 SEP 23

10-1P1

Eff 7 Sep

AIRPORT BRIEFING

2. DEPARTURE

2.1. DE-ICING

Stand 11 only is available for de-icing.

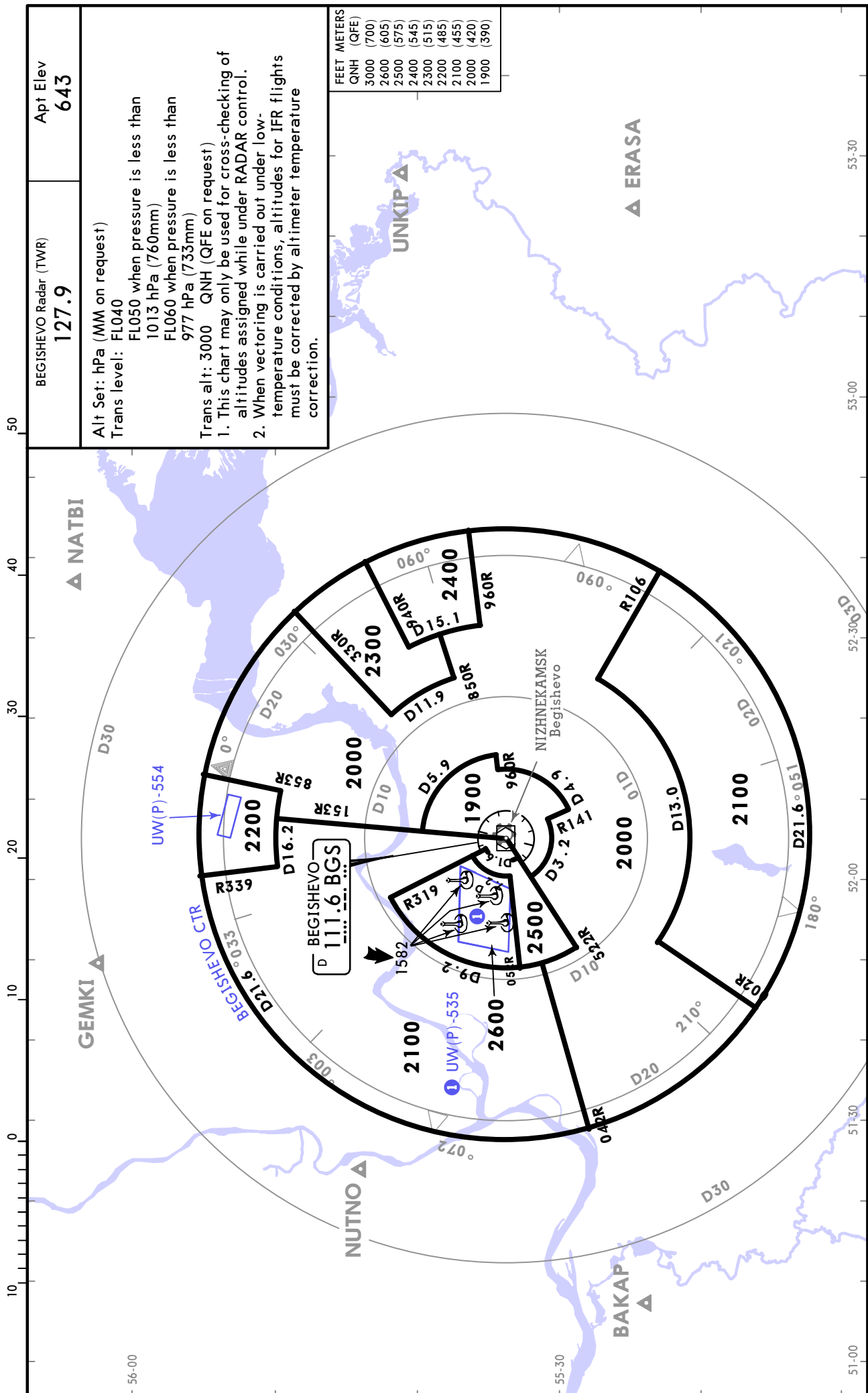
Movement to stand for de-icing treatment shall be executed by towing with shut down engines.

UWKE/NBC BEGISHEVO

21 NOV 25 **10-1R** Eff 27 Nov

NIZHNEKAMSK, RUSSIA

RADAR MINIMUM ALTITUDES



CHANGES: Prohibited area added.

© JEPPESEN, 2023, 2025. ALL RIGHTS RESERVED.

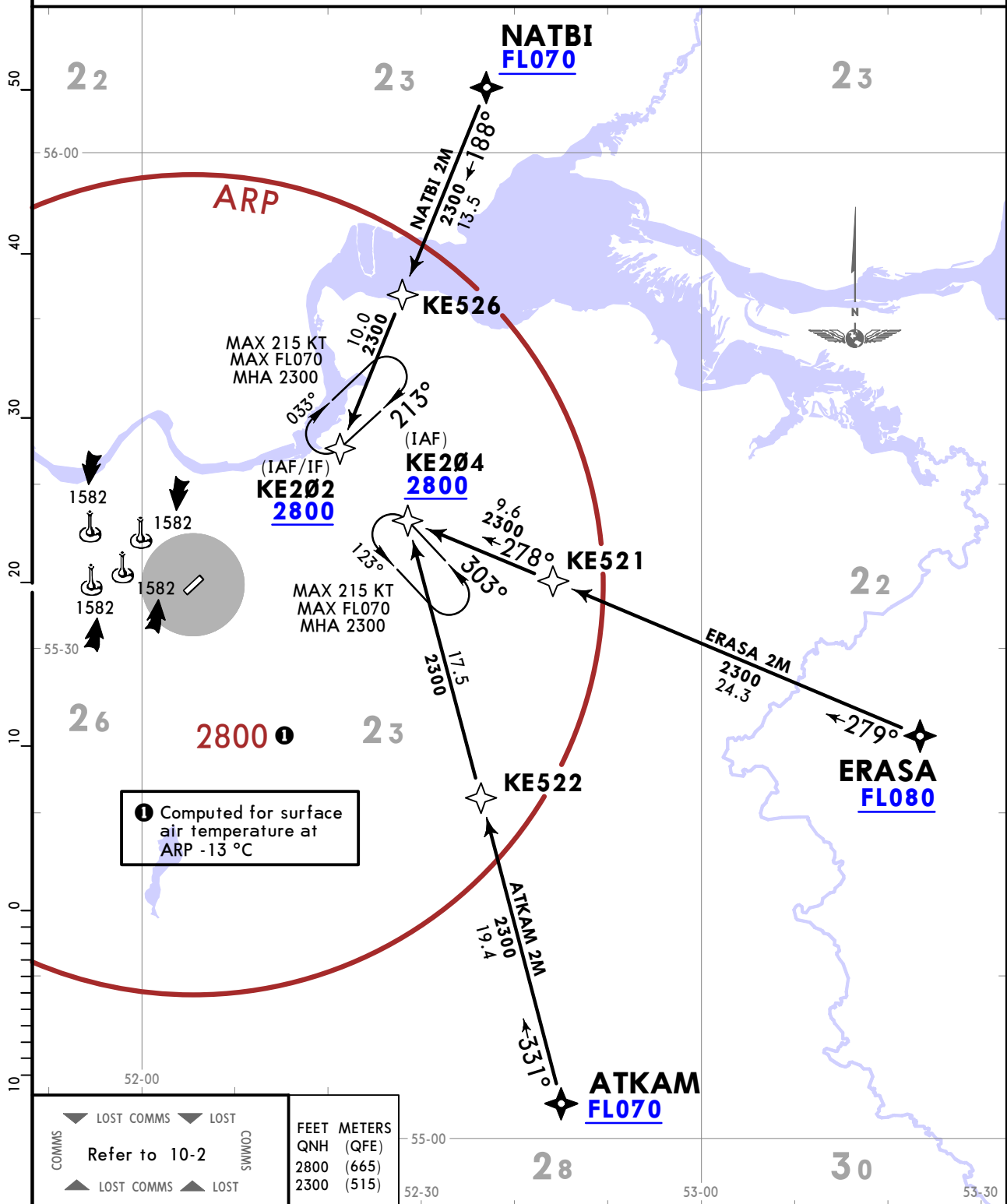
UWKE/NBC
BEGISHEVO

JEPPESEN 5 JUL 24 **(10-2A)** Eff 11 Jul

NIZHNEKAMSK, RUSSIA
RNAV STAR

ATIS 134.2	Alt Set: hPa (MM on request) Trans level: FL040 FL050 if pressure is less than 1013 hPa (760 mm) FL060 if pressure is less than 977 hPa (733 mm)
Apt Elev 643	RNAV 1 GNSS required 1. Descent and approach procedure shall be carried out via established STAR and approach Procedures applying 'direct to' procedure and/or by vectoring. 2. ACFT shall descend only to the level (altitude, flight level) cleared by ATS.

**ATKAM 2M [ATKA2M], ERASA 2M [ERAS2M]
 NATBI 2M [NATB2M]
 RNAV ARRIVALS
 (RWY 21)**



① Computed for surface air temperature at ARP -13 °C

COMMS ▼ LOST COMMS Refer to 10-2 ▲ LOST COMMS COMMS	FEET METERS QNH (QFE) 2800 (665) 2300 (515)
---	--

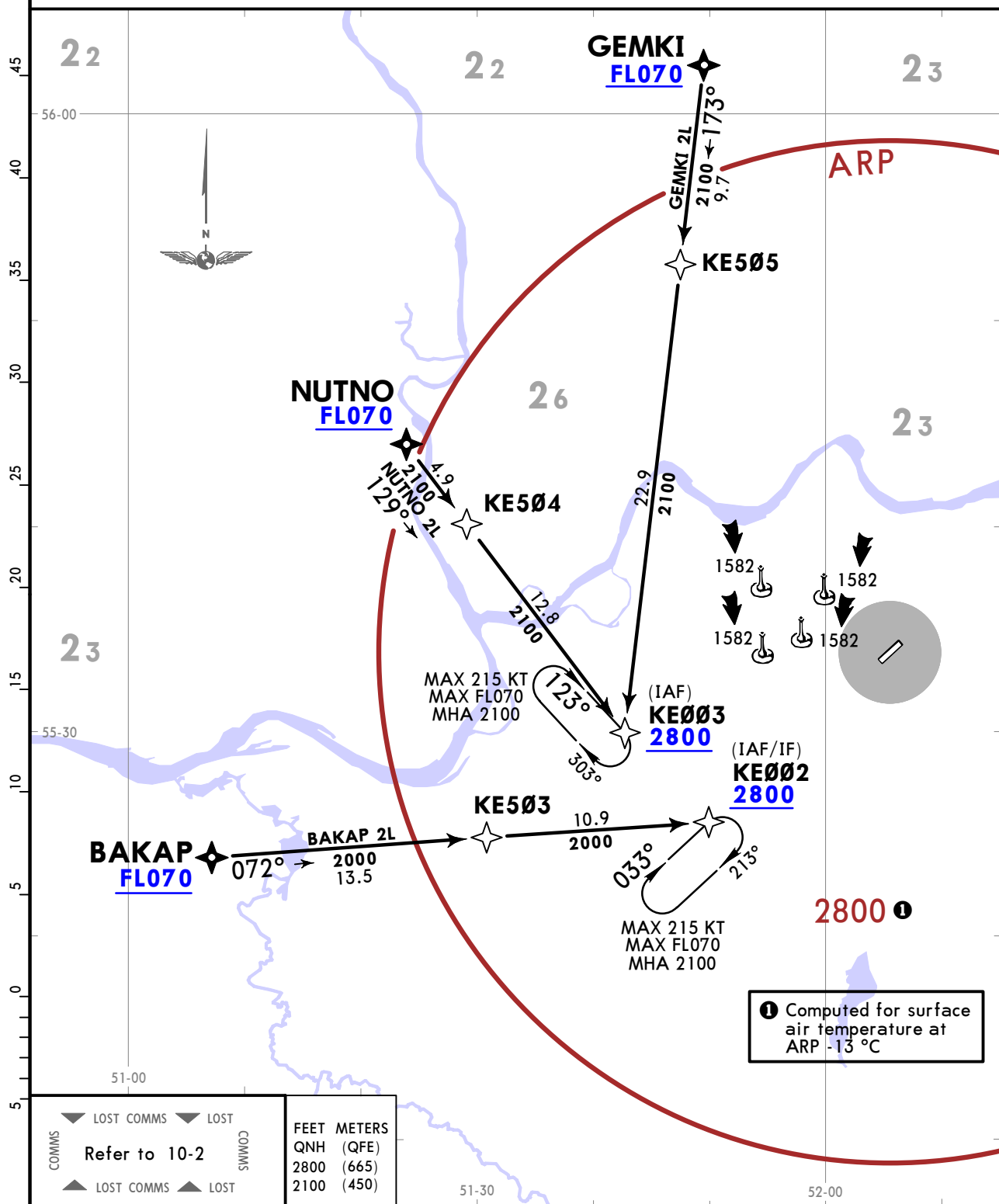
UWKE/NBC
BEGISHEVO

JEPPESSEN
21 NOV 25 **(10-2B)** Eff 27 Nov

NIZHNEKAMSK, RUSSIA
RNAV STAR

ATIS 134.2	Alt Set: hPa (MM on request) Trans level: FL040 FL050 if pressure is less than 1013 hPa (760 mm) FL060 if pressure is less than 977 hPa (733 mm)
Apt Elev 643	RNAV 1 GNSS required 1. Descent and approach procedure shall be carried out via established STAR and approach Procedures applying 'direct to' procedure and/or by vectoring. 2. ACFT shall descend only to the level (altitude, flight level) cleared by ATS.

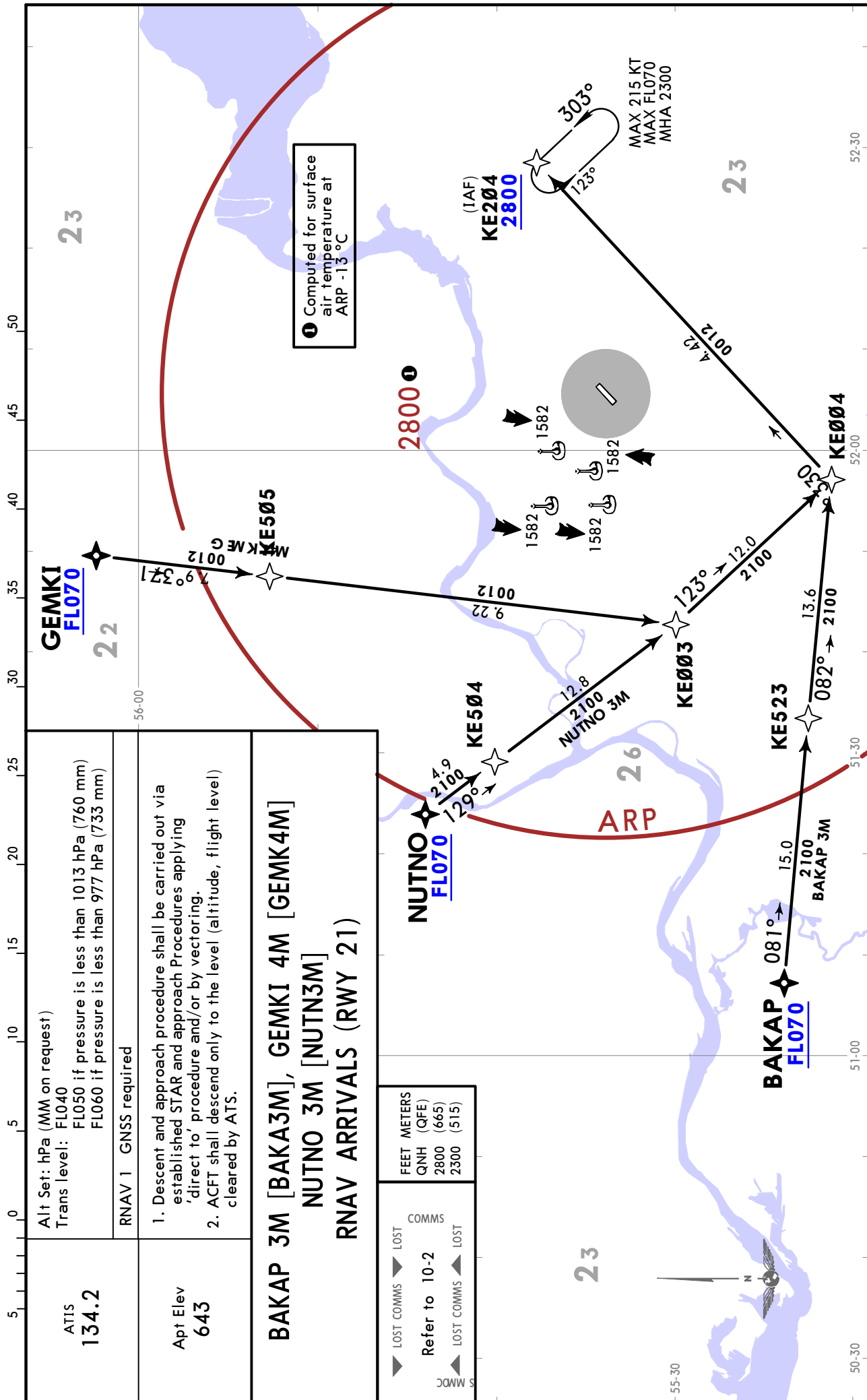
**BAKAP 2L [BAKA2L], GEMKI 2L [GEMK2L]
NUTNO 2L [NUTN2L]
RNAV ARRIVALS
(RWY 03)**



UWKE/NBC
BEGISHEVO

JEPPesen 21 NOV 25 **10-2C** Eff 27 Nov

NIZHNEKAMSK, RUSSIA
RNAV STAR



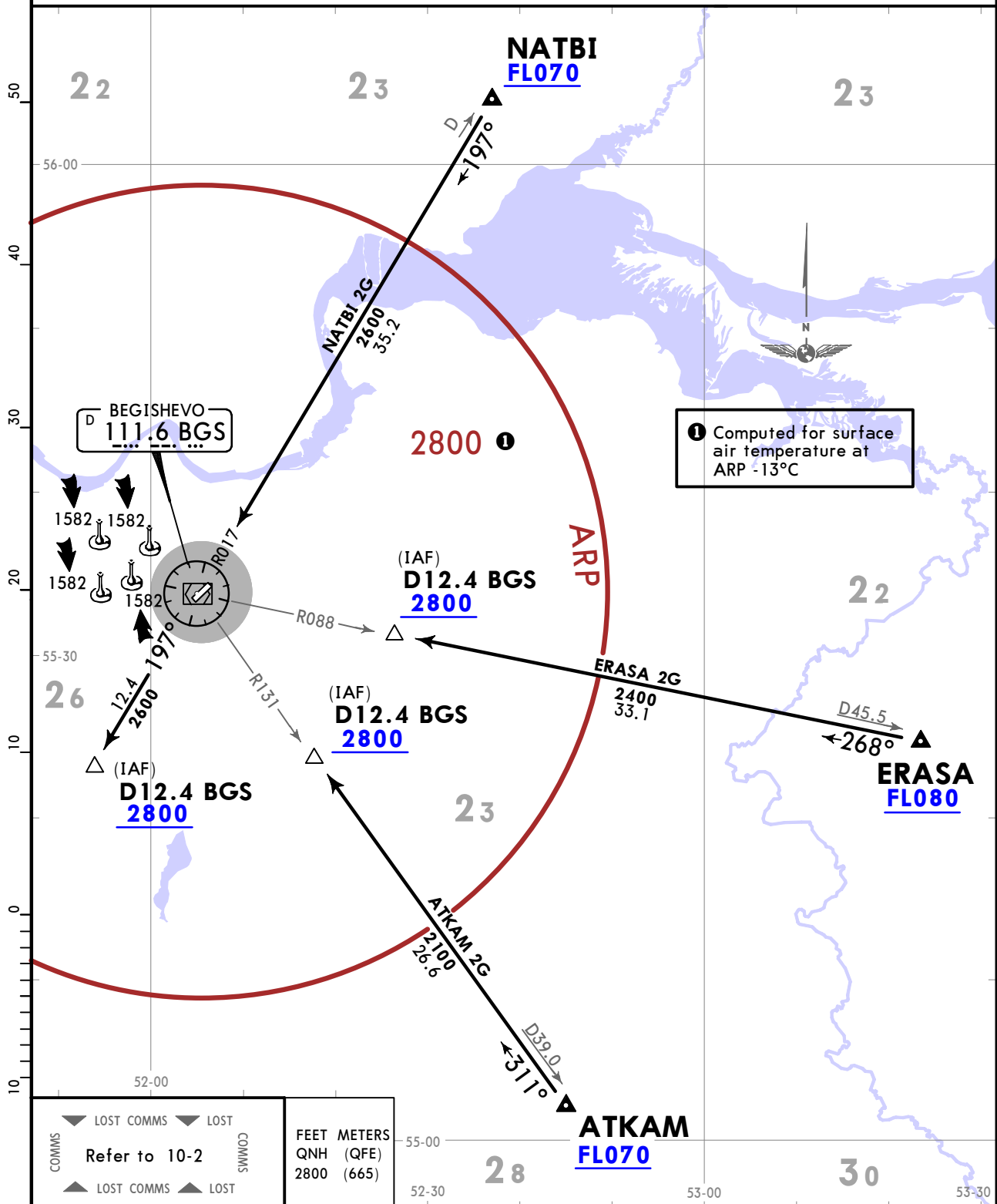
UWKE/NBC
BEGISHEVO

JEPPESSEN
21 NOV 25 (10-2D)

NIZHNEKAMSK, RUSSIA
STAR

ATIS 134.2	Alt Set: hPa (MM on request) Trans level: FL040 FL050 if pressure is less than 1013 hPa (760 mm) FL060 if pressure is less than 977 hPa (733 mm)
Apt Elev 643	1. DME required. 2. Descent and approach procedure shall be carried out via established STAR and approach Procedures applying 'direct to' procedure and/or by vectoring. 3. ACFT shall descend only to the level (altitude, flight level) cleared by ATS.

ATKAM 2G [ATKA2G]
ERASA 2G [ERAS2G]
NATBI 2G [NATB2G]
ARRIVALS
(RWY 03)



COMMS Refer to 10-2 COMMS	FEET METERS QNH (QFE) 2800 (665)
---------------------------------	--

CHANGES: MSA reference temperature.

© JEPPESSEN, 2020, 2025. ALL RIGHTS RESERVED.

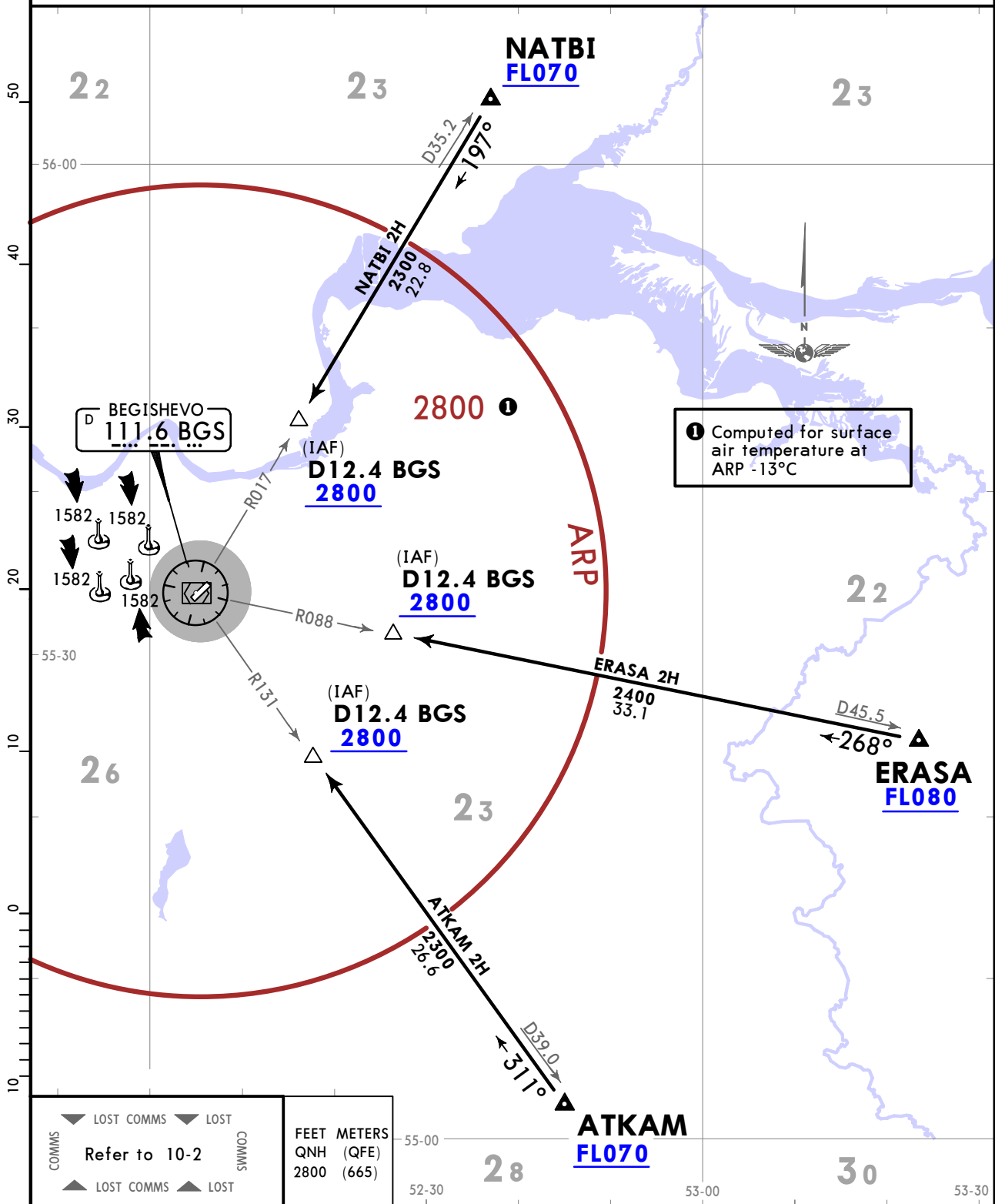
UWKE/NBC
BEGISHEVO

JEPPESSEN
21 NOV 25 **(10-2E)**

NIZHNEKAMSK, RUSSIA
STAR

ATIS 134.2	Alt Set: hPa (MM on request) Trans level: FL040 FL050 if pressure is less than 1013 hPa (760 mm) FL060 if pressure is less than 977 hPa (733 mm)
Apt Elev 643	1. DME required. 2. Descent and approach procedure shall be carried out via established STAR and approach Procedures applying 'direct to' procedure and/or by vectoring. 3. ACFT shall descend only to the level (altitude, flight level) cleared by ATS.

ATKAM 2H [ATKA2H]
ERASA 2H [ERAS2H]
NATBI 2H [NATB2H]
ARRIVALS
(RWY 21)



COMMS Refer to 10-2 COMMS	FEET METERS QNH (QFE) 2800 (665)
---------------------------------	--

CHANGES: MSA reference temperature.

© JEPPESSEN, 2020, 2025. ALL RIGHTS RESERVED.

UWKE/NBC
BEGISHEVO

JEPPESSEN
21 NOV 25 **(10-2F)**

NIZHNEKAMSK, RUSSIA
STAR

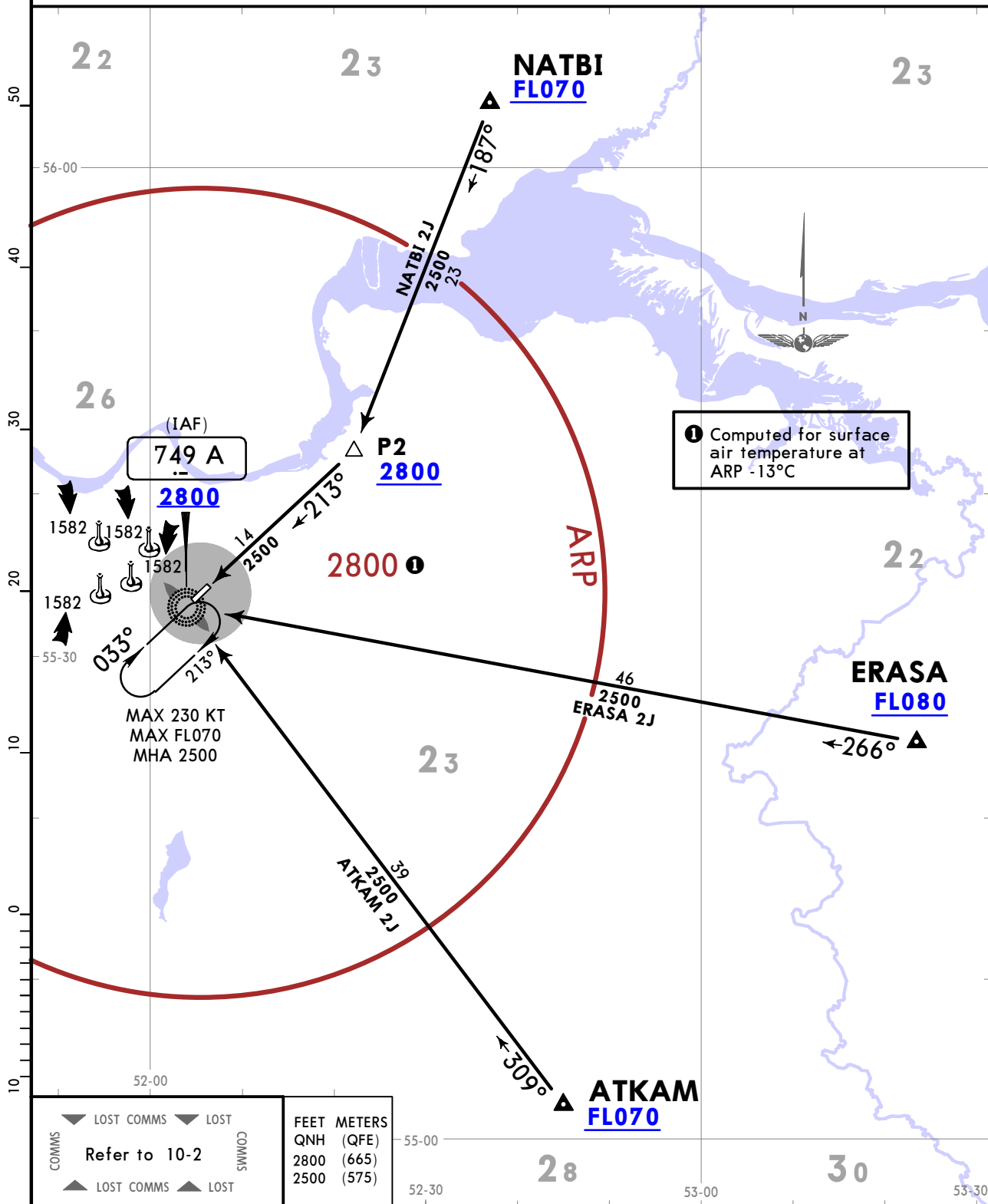
ATIS
134.2

Apt Elev
643

Alt Set: hPa (MM on request)
Trans level: **FL040**
FL050 if pressure is less than 1013 hPa (760 mm)
FL060 if pressure is less than 977 hPa (733 mm)

1. Descent and approach procedure shall be carried out via established STAR and approach Procedures applying 'direct to' procedure and/or by vectoring.
2. ACFT shall descend only to the level (altitude, flight level) cleared by ATS.

ATKAM 2J [ATKA2J]
ERASA 2J [ERAS2J]
NATBI 2J [NATB2J]
ARRIVALS
(RWY 03)
UNDER RADAR CONTROL



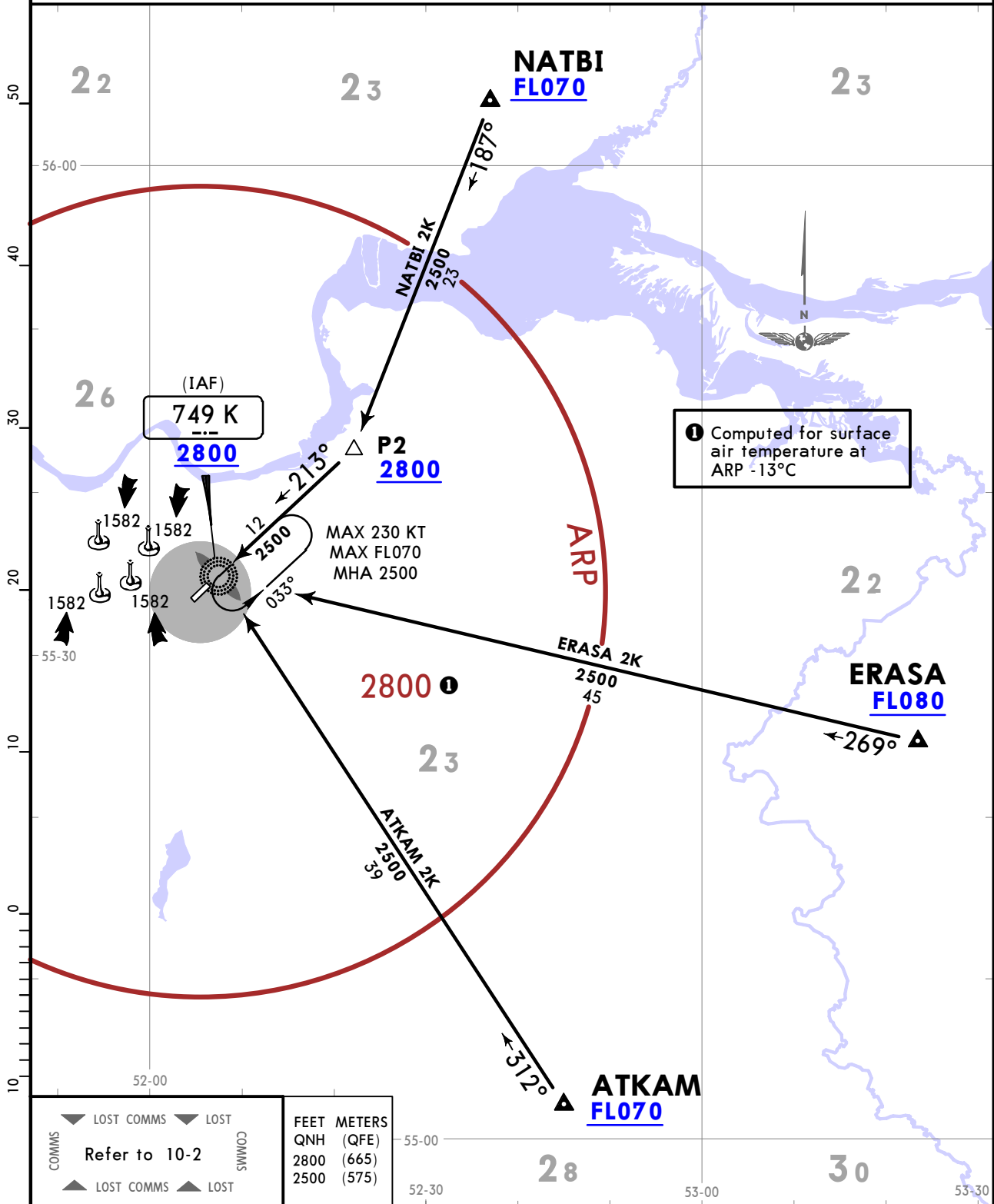
UWKE/NBC
BEGISHEVO

JEPPESSEN
 21 NOV 25 (10-2G)

NIZHNEKAMSK, RUSSIA
STAR

ATIS 134.2	Alt Set: hPa (MM on request) Trans level: FL040 FL050 if pressure is less than 1013 hPa (760 mm) FL060 if pressure is less than 977 hPa (733 mm)
Apt Elev 643	1. Descent and approach procedure shall be carried out via established STAR and approach Procedures applying 'direct to' procedure and/or by vectoring. 2. ACFT shall descend only to the level (altitude, flight level) cleared by ATS.

ATKAM 2K [ATKA2K]
ERASA 2K [ERAS2K]
NATBI 2K [NATB2K]
ARRIVALS
(RWY 21)
UNDER RADAR CONTROL



COMMS Refer to 10-2 COMMS	FEET METERS QNH (QFE) 2800 (665) 2500 (575)
---------------------------------	--

CHANGES: MSA reference temperature.

© JEPPESSEN, 2020, 2025. ALL RIGHTS RESERVED.

UWKE/NBC
BEGISHEVO

JEPPESSEN 21 NOV 25 **(10-2H)** Eff 27 Nov

NIZHNEKAMSK, RUSSIA

STAR

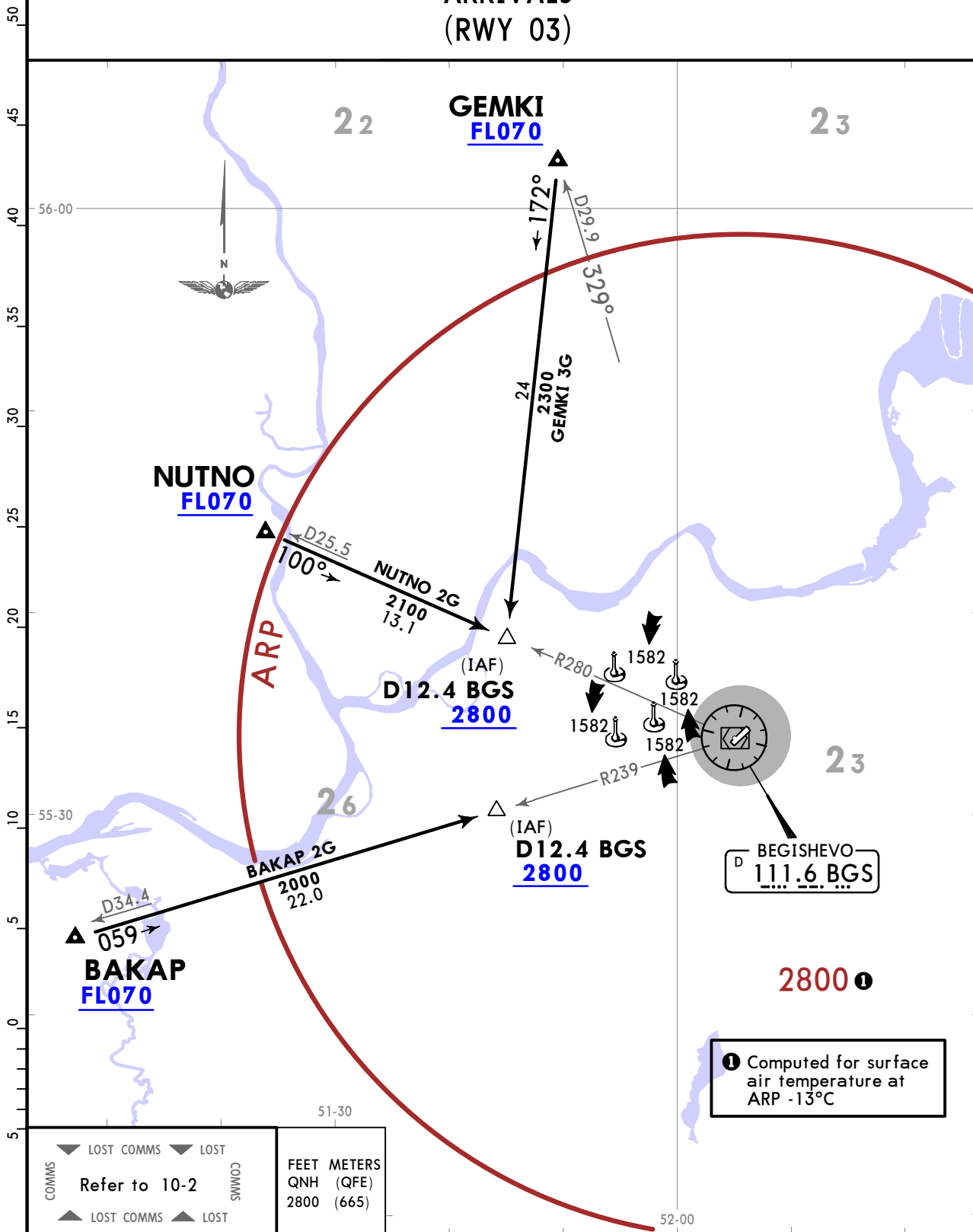
ATIS
134.2

Alt Set: hPa (MM on request)
Trans level: FL040
FL050 if pressure is less than 1013 hPa (760 mm)
FL060 if pressure is less than 977 hPa (733 mm)

Apt Elev
643

1. DME required.
2. Descent and approach procedure shall be carried out via established STAR and approach Procedures applying 'direct to' procedure and/or by vectoring.
3. ACFT shall descend only to the level (altitude, flight level) cleared by ATS.

BAKAP 2G [BAKA2G]
GEMKI 3G [GEMK3G]
NUTNO 2G [NUTN2G]
ARRIVALS
(RWY 03)



COMMS	LOST COMMS	LOST	COMMS
Refer to 10-2			
COMMS	LOST COMMS	LOST	COMMS
FEET METERS		QNH (QFE)	
2800		(665)	

UWKE/NBC
BEGISHEVO

JEPPESEN 21 NOV 25 **(10-2J)** Eff 27 Nov

NIZHNEKAMSK, RUSSIA

STAR

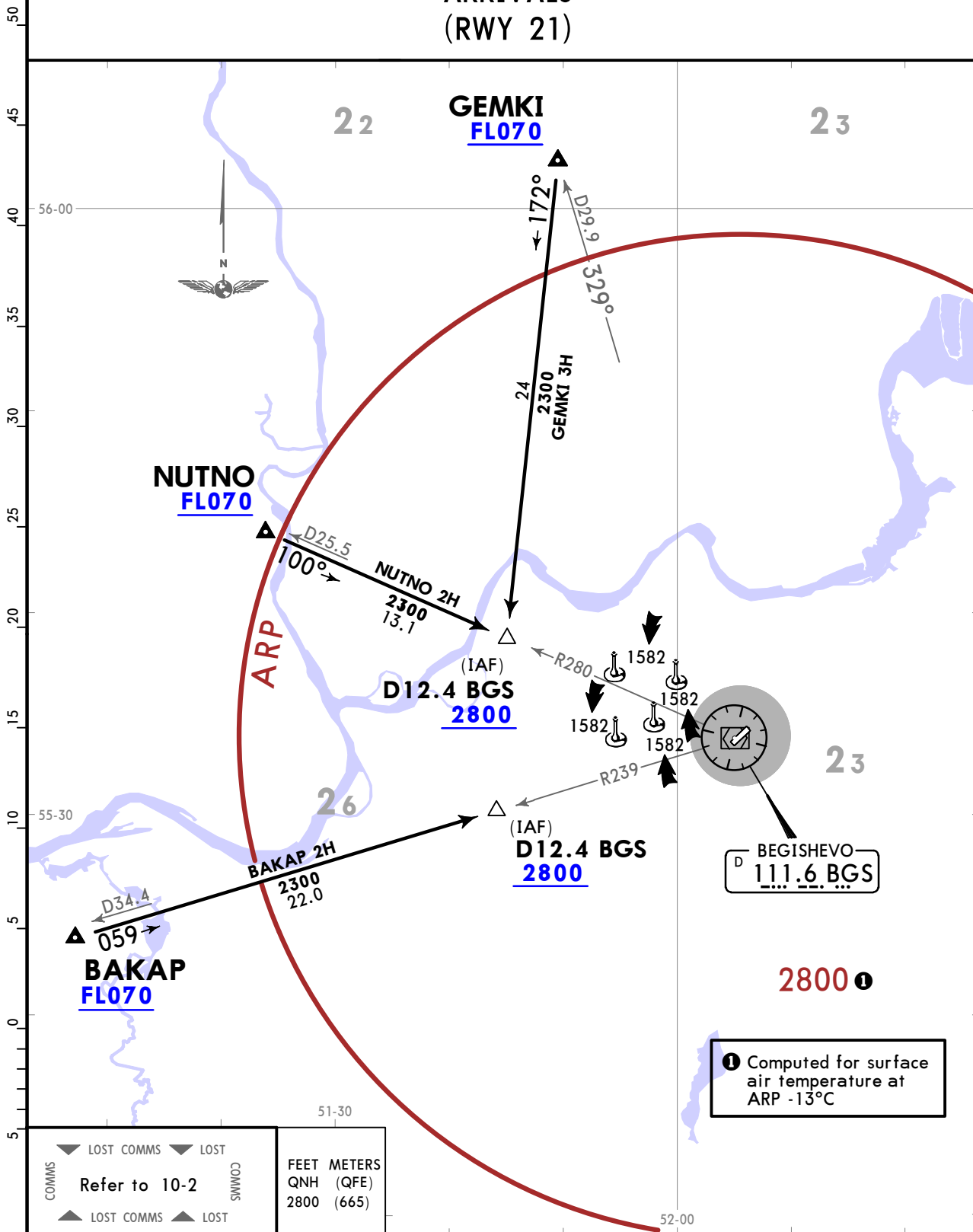
ATIS
134.2

Alt Set: hPa (MM on request)
Trans level: FL040
FL050 if pressure is less than 1013 hPa (760 mm)
FL060 if pressure is less than 977 hPa (733 mm)

Apt Elev
643

1. DME required.
2. Descent and approach procedure shall be carried out via established STAR and approach Procedures applying 'direct to' procedure and/or by vectoring.
3. ACFT shall descend only to the level (altitude, flight level) cleared by ATS.

BAKAP 2H [BAKA2H]
GEMKI 3H [GEMK3H]
NUTNO 2H [NUTN2H]
ARRIVALS
(RWY 21)



COMMS
Refer to 10-2
LOST COMMS

FEET METERS
QNH (QFE)
2800 (665)

UWKE/NBC
BEGISHEVO

JEPPESSEN NIZHNEKAMSK, RUSSIA
21 NOV 25 (10-2K) Eff 27 Nov

STAR

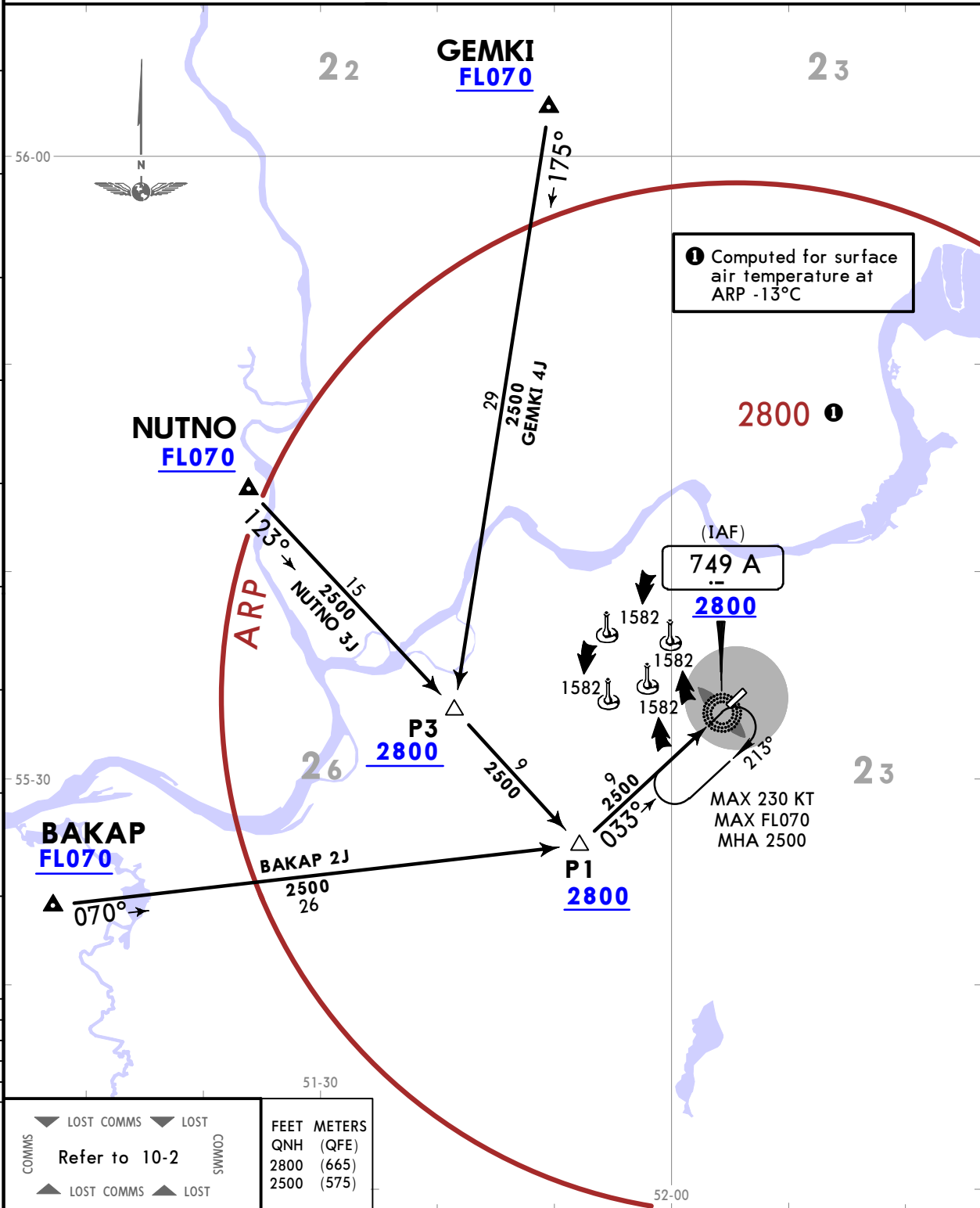
ATIS
134.2

Apt Elev
643

Alt Set: hPa (MM on request)
Trans level: FL040
FL050 if pressure is less than 1013 hPa (760 mm)
FL060 if pressure is less than 977 hPa (733 mm)
1. Descent and approach procedure shall be carried out via established STAR and approach Procedures applying 'direct to' procedure and/or by vectoring.
2. ACFT shall descend only to the level (altitude, flight level) cleared by ATIS.

BAKAP 2J [BAKA2J]
GEMKI 4J [GEMK4J]
NUTNO 3J [NUTN3J]
ARRIVALS
(RWY 03)
UNDER RADAR CONTROL

50
45
40
35
30
25
20
15
10
5
0
5



COMMS	LOST COMMS	LOST	COMMS
Refer to 10-2			
COMMS	LOST COMMS	LOST	COMMS

FEET	METERS
QNH (QFE)	
2800 (665)	
2500 (575)	

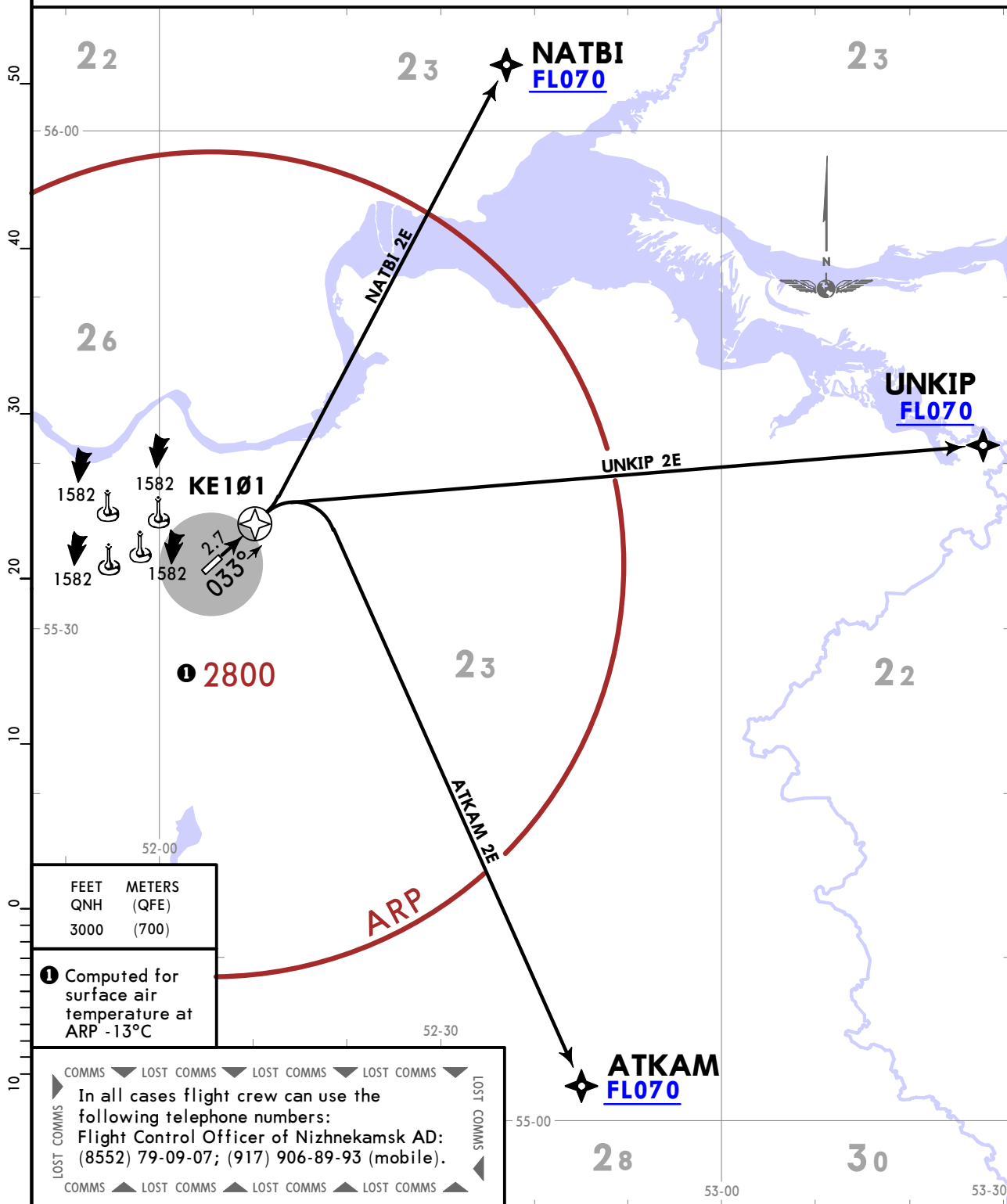
UWKE/NBC BEGISHEVO

JEPPESSEN
5 JUL 24 **10-3** Eff 11 Jul

NIZHNEKAMSK, RUSSIA
RNAV SID

BEGISHEVO Start (TWR) 121.2	Trans alt: 3000 QNH (QFE on request)
BEGISHEVO Radar/Tower (TWR) 127.9	RNAV 1 GNSS is required
Apt Elev 643	<ol style="list-style-type: none"> 1. If no information available on or if unable to maintain RNAV SID, inform BEGISHEVO START or TWR and request vectoring. 2. Climb only to the altitude/FL cleared by ATC. 3. Take-off and initial climb shall be executed via SID to ATS route before NCRP/CRP at CTR boundary or via RADAR vectoring. 4. If not otherwise instructed climb to 3000, at 1200 establish contact with BEGISHEVO Radar or TWR and report execution of take-off, assigned SID and altitude to be reached.

ATKAM 2E [ATKA2E], NATBI 2E [NATB2E] UNKIP 2E [UNKI2E] RNAV DEPARTURES (RWY 03)



CHANGES: Trans alt, note 4. revised.

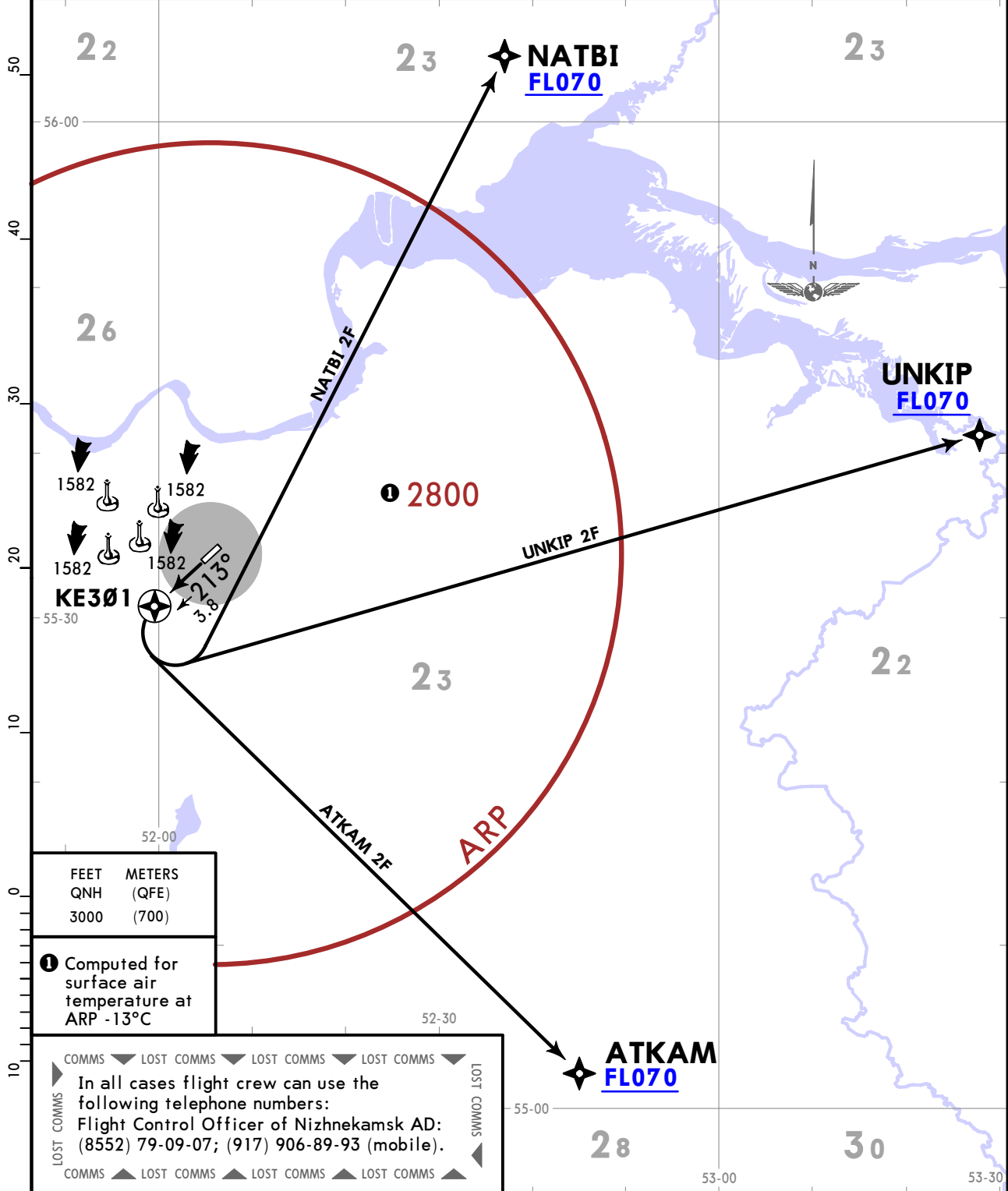
UWKE/NBC BEGISHEVO

JEPPesen
5 JUL 24 (10-3A) Eff 11 Jul

NIZHNEKAMSK, RUSSIA
RNAV SID

BEGISHEVO Start (TWR) 121.2	Trans alt: 3000 QNH (QFE on request)
BEGISHEVO Radar/Tower (TWR) 127.9	RNAV 1 GNSS is required
Apt Elev 643	<ol style="list-style-type: none"> 1. If no information available on or if unable to maintain RNAV SID, inform BEGISHEVO START or TWR and request vectoring. 2. Climb only to the altitude/FL cleared by ATC. 3. Take-off and initial climb shall be executed via SID to ATS route before NCRP/CRP at CTR boundary or via RADAR vectoring. 4. If not otherwise instructed climb to 3000, at 1200 establish contact with BEGISHEVO Radar and TWR and report execution of take-off, assigned SID and altitude to be reached.

ATKAM 2F [ATKA2F], NATBI 2F [NATB2F] UNKIP 2F [UNKI2F] RNAV DEPARTURES (RWY 21)



CHANGES: Trans alt, note 4. revised.

UWKE/NBC
BEGISHEVO

JEPPESSEN 21 NOV 25 **10-3B** Eff 27 Nov

NIZHNEKAMSK, RUSSIA
RNAV SID

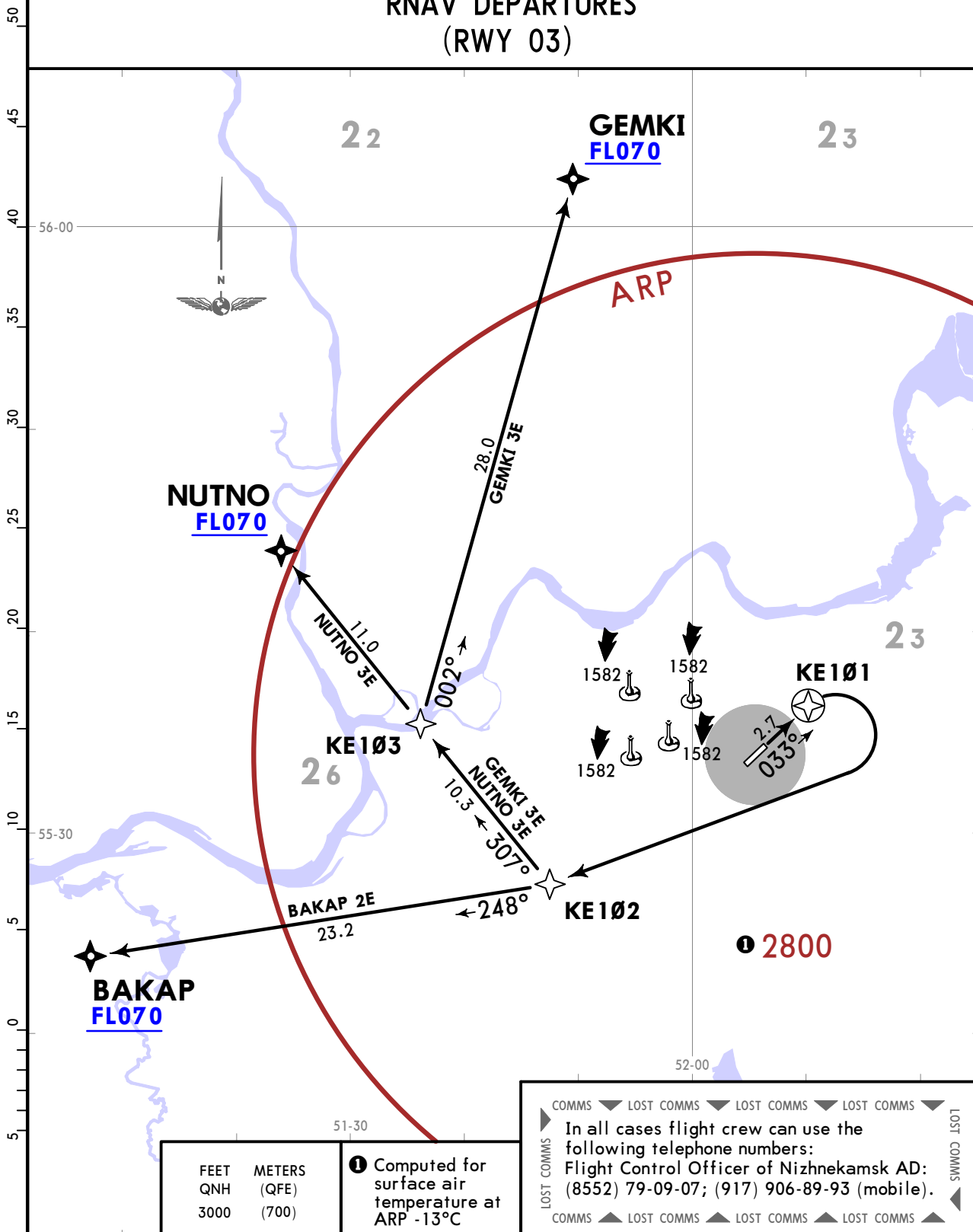
BEGISHEVO Start (TWR) 121.2
BEGISHEVO Radar/Tower (TWR) 127.9
Apt Elev 643

Trans alt: 3000 QNH (QFE on request)

RNAV 1 GNSS is required

1. If no information available on or if unable to maintain RNAV SID, inform BEGISHEVO START or TWR and request vectoring.
2. Climb only to the altitude/FL cleared by ATC.
3. Take-off and initial climb shall be executed via SID to ATS route before NCRP/CRP at CTR boundary or via RADAR vectoring.
4. If not otherwise instructed climb to 3000, at 1200 establish contact with BEGISHEVO Radar or TWR and report execution of take-off, assigned SID and altitude to be reached.

**BAKAP 2E [BAKA2E], GEMKI 3E [GEMK3E]
NUTNO 3E [NUTN3E]
RNAV DEPARTURES
(RWY 03)**



UWKE/NBC
BEGISHEVO

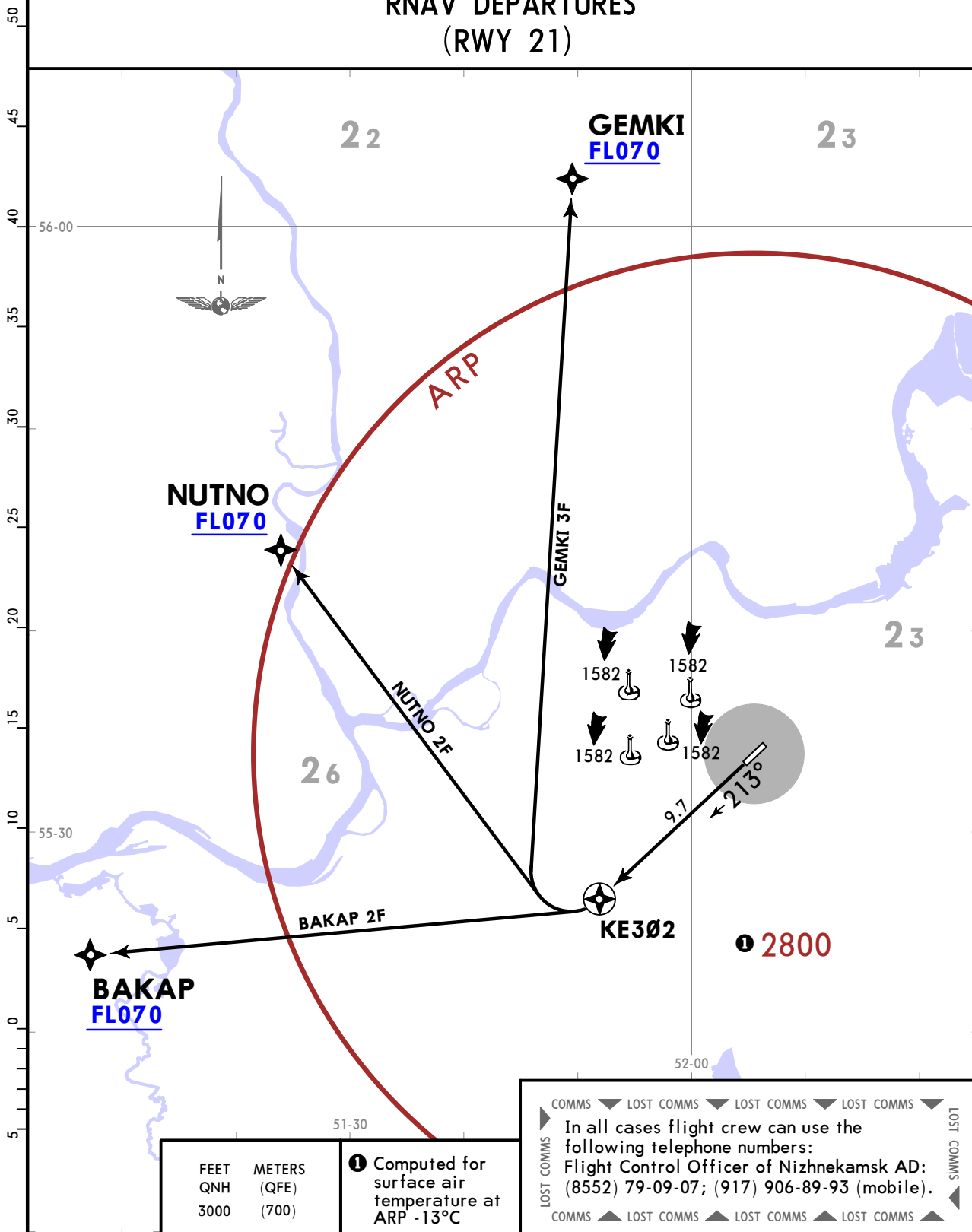
JEPPESSEN 21 NOV 25 **10-3C** **Eff 27 Nov**

NIZHNEKAMSK, RUSSIA
RNAV SID

BEGISHEVO Start (TWR) 121.2
BEGISHEVO Radar/Tower (TWR) 127.9
Apt Elev 643

- Trans alt: 3000 QNH (QFE on request)
- RNAV 1 GNSS is required
1. If no information available on or if unable to maintain RNAV SID, inform BEGISHEVO START or TWR and request vectoring.
 2. Climb only to the altitude/FL cleared by ATC.
 3. Take-off and initial climb shall be executed via SID to ATS route before NCRP/CRP at CTR boundary or via RADAR vectoring.
 4. If not otherwise instructed climb to 3000, at 1200 establish contact with BEGISHEVO Radar or TWR and report execution of take-off, assigned SID and altitude to be reached.

**BAKAP 2F [BAKA2F], GEMKI 3F [GEMK3F]
NUTNO 2F [NUTN2F]
RNAV DEPARTURES
(RWY 21)**



BEGISHEVO Radar/Tower (TWR)
 127.9

Trans alt: 3000 QNH (QFE on request)
 1. DME required.
 2. Climb only to the altitude/FL cleared by ATC.
 2. Take-off and initial climb shall be executed via SID to ATS route before NCRP/CRP at CTR boundary or via RADAR vectoring.
 3. If not otherwise instructed climb to 3000, at 1200 establish contact with BEGISHEVO Radar or TWR and report execution of take-off, assigned SID and altitude to be reached.

ATKAM 2B [ATKA2B]
NATBI 3B [NATB3B]
UNKIP 2B [UNKI2B]
DEPARTURES
(RWY 21)

COMMS
 LOST COMMS
 In all cases flight crew can use the following telephone numbers:
 Flight Control Officer of Nizhnekamsk AD:
 (8552) 79-09-07; (917) 906-89-93 (mobile).
 LOST COMMS

FEET METERS
 QNH (QFE)
 3000 (700)

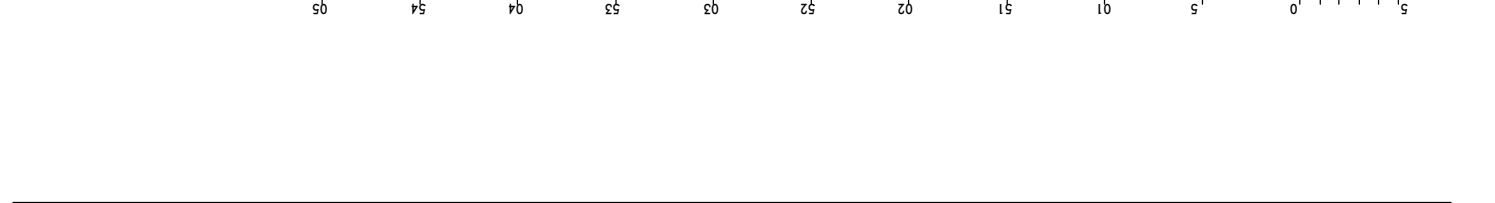
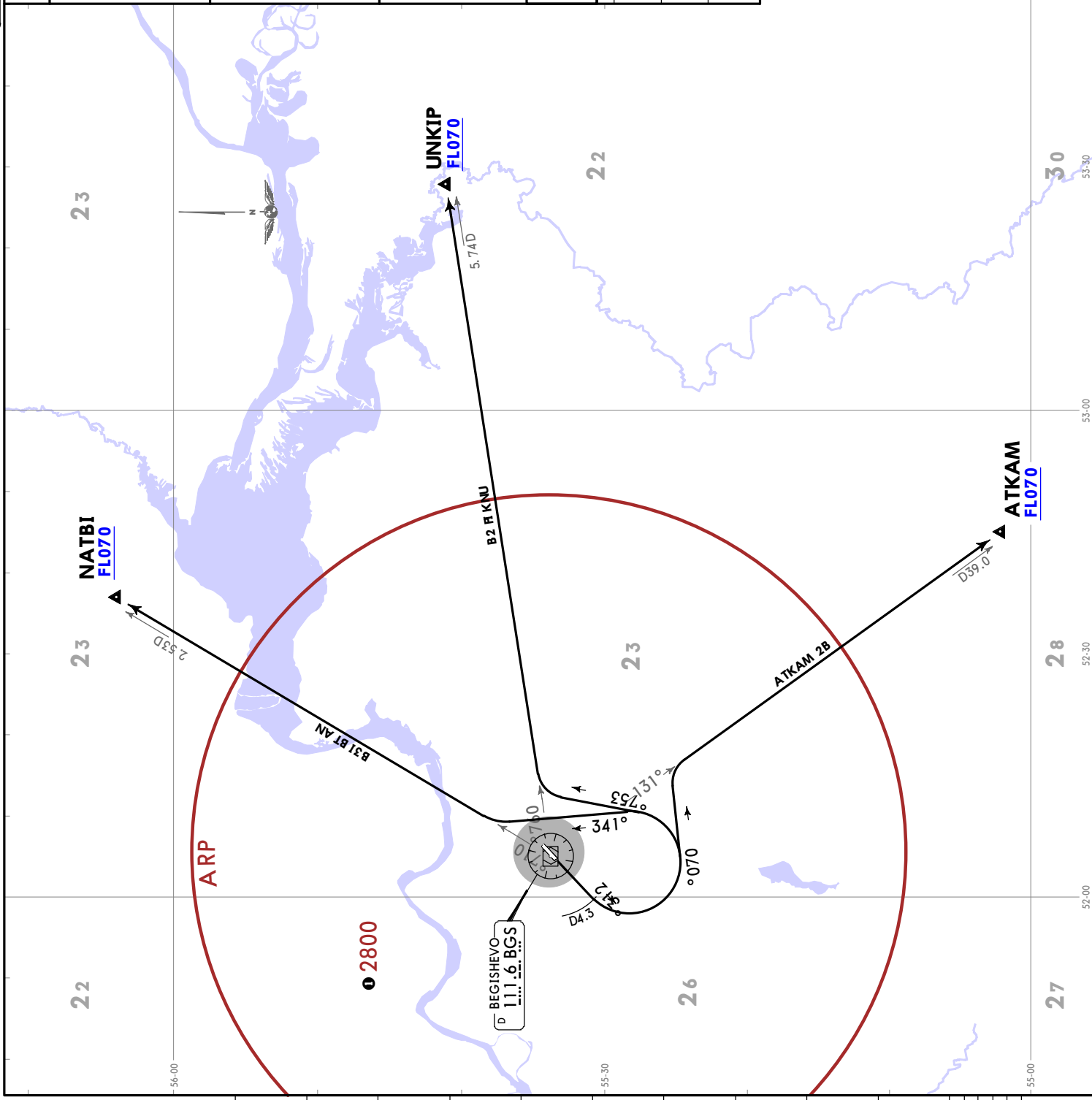
Computed for surface air temperature at ARP -13°C

SID

ATKAM 2B
 Climb on 213° track to D4.3 BGS, turn LEFT, 070° track, intercept BGS R017 to ATKAM.

NATBI 3B
 Climb on 213° track to D4.3 BGS, turn LEFT, 341° track to intercept BGS R017 to NATBI.

UNKIP 2B
 Climb on 213° track to D4.3 BGS, turn LEFT, 357° track, intercept BGS R067 to UNKIP.



UWKE/NBC BEGISHEVO



NIZHNEKAMSK, RUSSIA

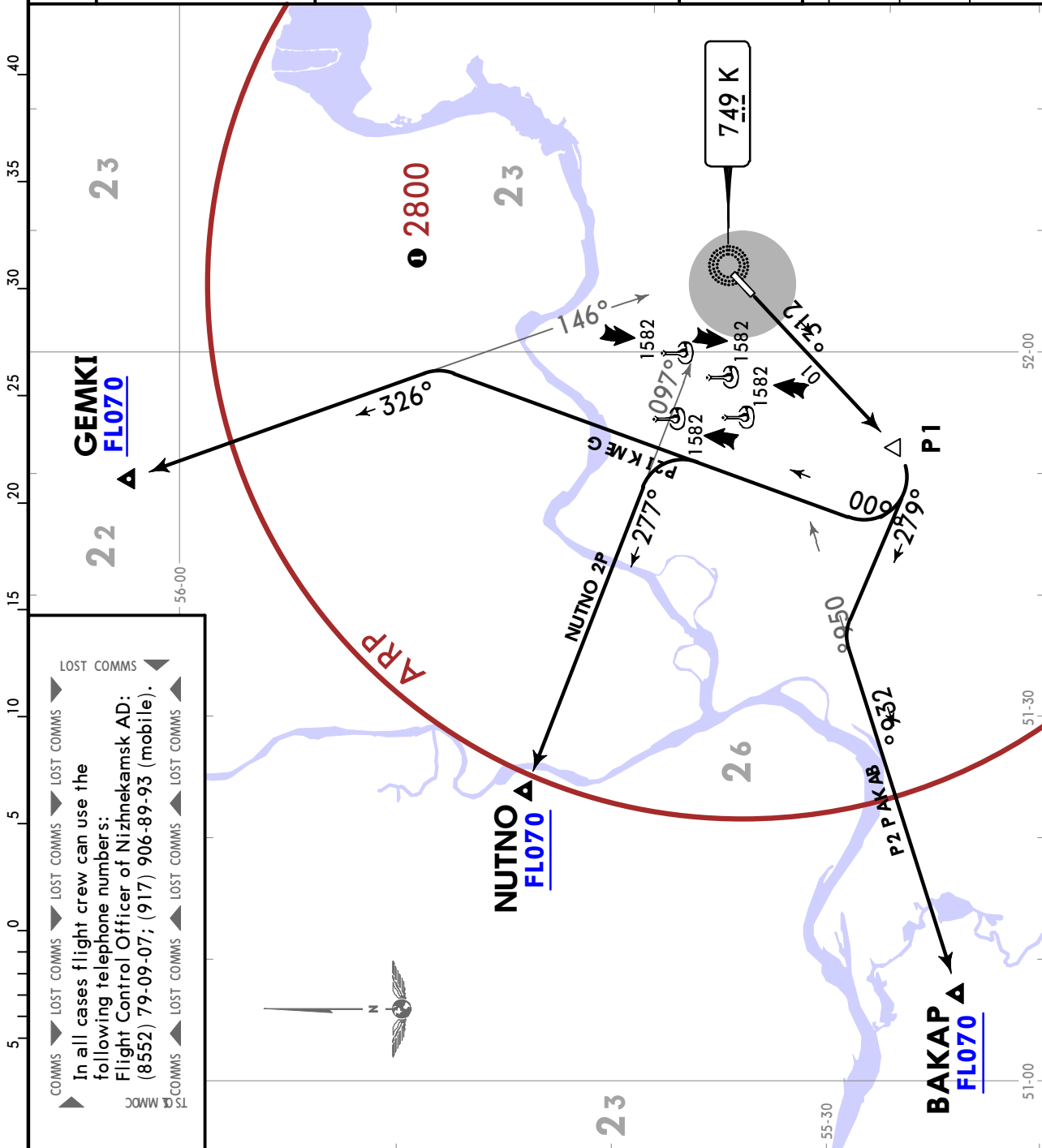
21 NOV 25

10-3L

Eff 27 Nov

SID

50	45	40	35	30	25	20	15	10	5	0	5
BEGISHEVO Radar/Tower (TWR) 127.9		Apt Elev 643		Trans alt: 3000 QNH (QFE on request) 1. Climb only to the altitude/FL cleared by ATC. 2. Take-off and initial climb shall be executed via SID to ATS route before NCRP/CRP at CTR boundary or via RADAR vectoring. 3. If not otherwise instructed climb to 3000, at 1200 establish contact with BEGISHEVO Radar or TWR and report execution of take-off, assigned SID and altitude to be reached.							
BAKAP 2P [BAKA2P] GEMKI 2P [GEMK2P] NUTNO 2P [NUTN2P] DEPARTURES (RWY 21) UNDER RADAR CONTROL		FEET METERS QNH (QFE) 1500 (270) 2500 (575) 3000 (700)		1 Computed for surface air temperature at ARP -13°C							
SID		ROUTING									
BAKAP 2P		Climb on 213° track to P1, turn RIGHT, 279° track, intercept 239° bearing from K to BAKAP.									
GEMKI 2P		Climb on 213° track to P1, turn RIGHT, 006° track, intercept 326° bearing from K to GEMKI.									
NUTNO 2P		Climb on 213° track to P1, turn RIGHT, 006° track, intercept 277° bearing from K to NUTNO.									



CHANGES: SIDs renumbered & revised, chart reindexed.

© JEPPESEN, 2024, 2025. ALL RIGHTS RESERVED.

UWKE/NBC

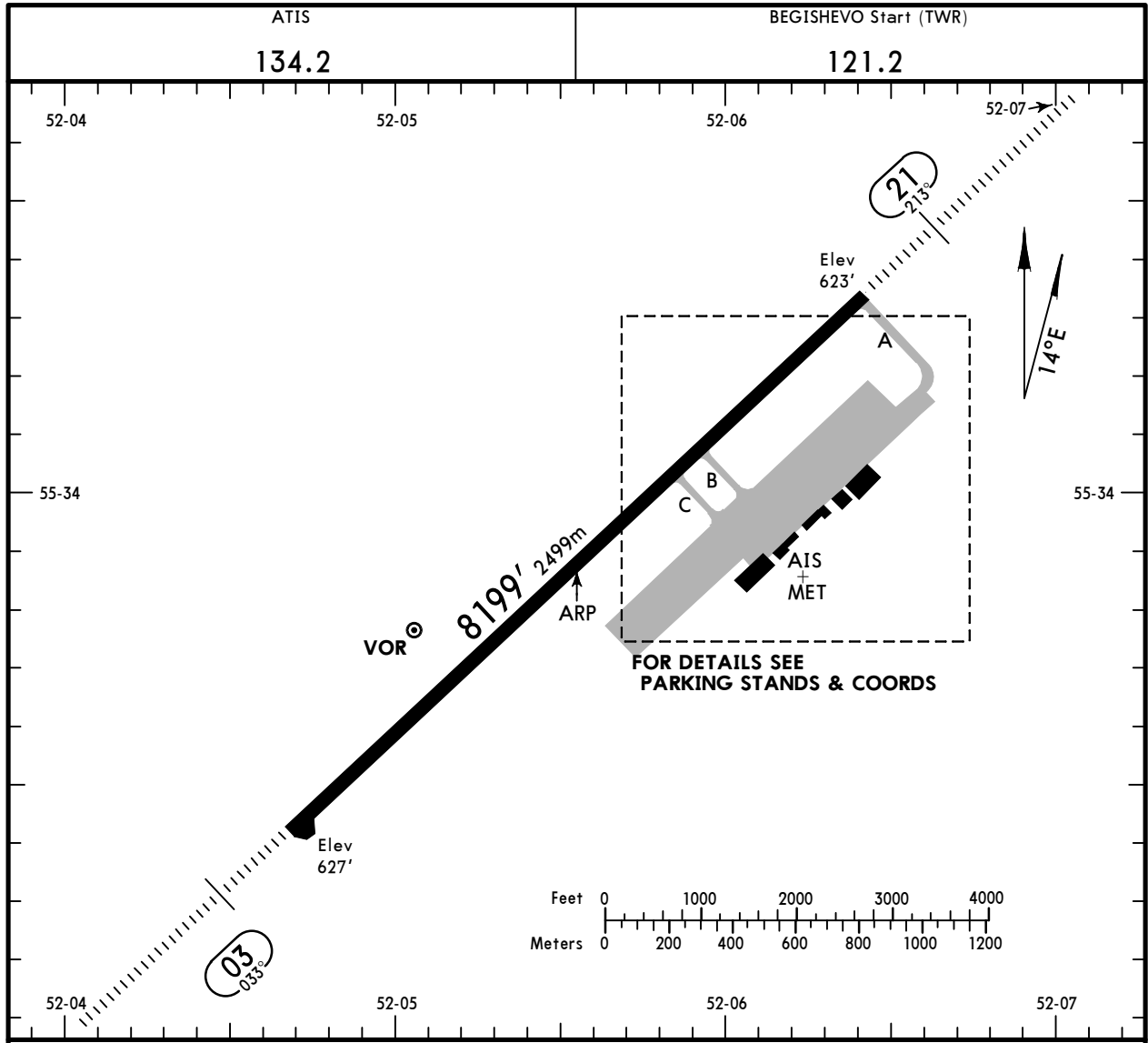
Apt Elev **643'**
N55 33.9 E052 05.6

JEPPesen

1 SEP 23 **(10-9)** Eff 7 Sep

NIZHNEKAMSK, RUSSIA

BEGISHEVO



ADDITIONAL RUNWAY INFORMATION

RWY	HIRL (60m)	HIALS	PAPI-L (angle 3.00°)	RVR	USABLE LENGTHS		TAKE-OFF	WIDTH
					Threshold	Glide Slope		
03 21						7287' 2221m	①	138' 42m

① TAKE-OFF RUN AVAILABLE

<u>RWY 03:</u> From rwy head	8199' (2499m)	<u>RWY 21:</u> From rwy head	8199' (2499m)
twy C int	2743' (836m)	twy B int	5892' (1796m)
twy B int	2382' (726m)	twy C int	5525' (1684m)

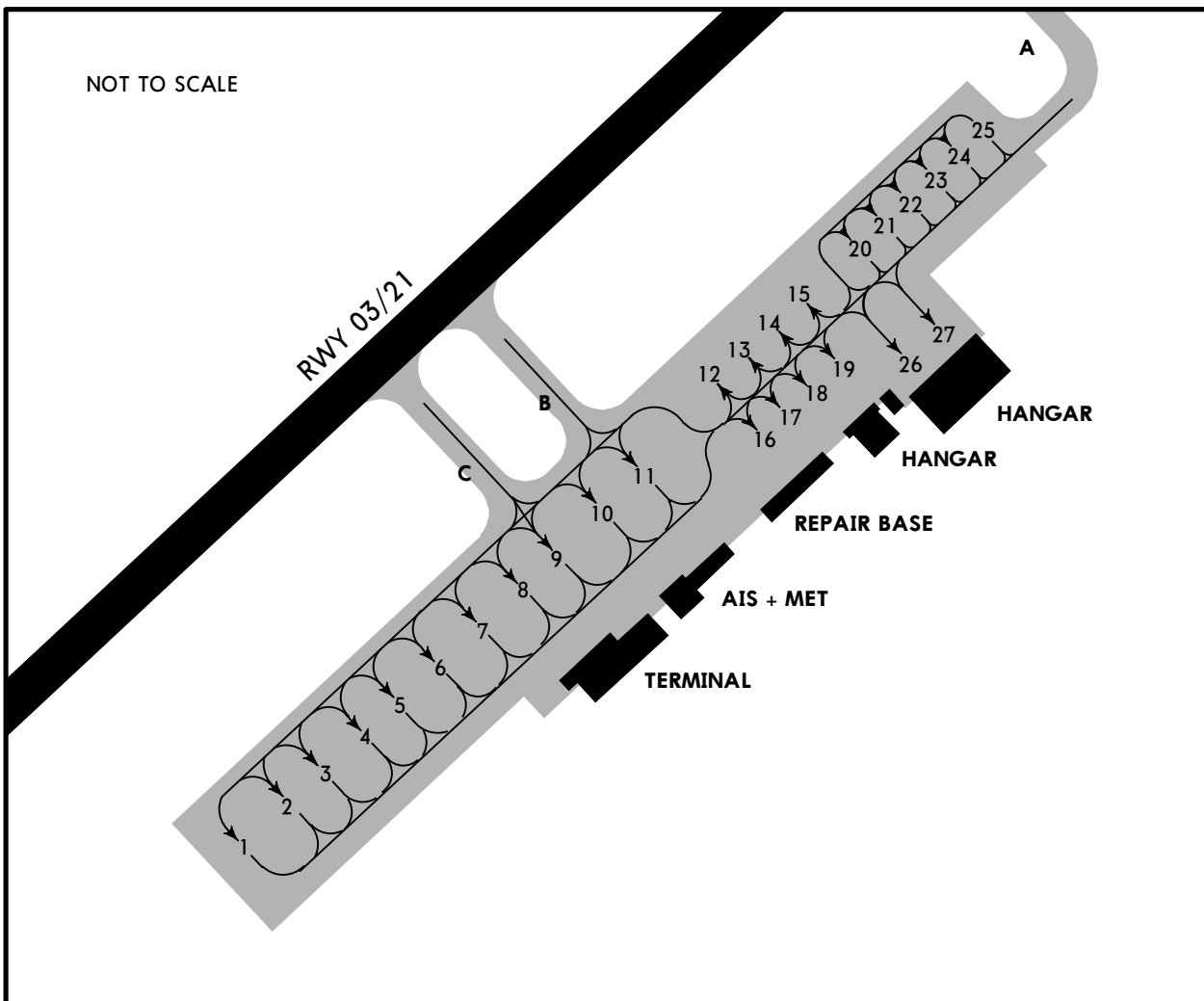
Std				TAKE-OFF			
RL & RCLM		RL	RL or RCLM		Adequate Vis Ref		
DAY	NIGHT		DAY	DAY	NIGHT		
R300m			R400m		R/V500m		NA

UWKE/NBC

JEPPESEN
1 SEP 23 (10-9A) Eff 7 Sep

NIZHNEKAMSK, RUSSIA

BEGISHEVO



INS COORDINATES

STAND No.	COORDINATES
1	N55 33.7 052 05.7
2 thru 4	N55 33.8 052 05.8
5	N55 33.8 052 05.9
6	N55 33.9 052 05.9
7 thru 9	N55 33.9 052 06.0
10	N55 33.9 052 06.1
11	N55 34.0 052 06.1

UWKE/NBC



EASA AIR OPS

NIZHNEKAMSK, RUSSIA
BEGISHEVO

STRAIGHT-IN RWY		A	B	C	D
03	GLS	827' (200') ① R550m	827' (200') ① R550m	827' (200') ① R550m	827' (200') ① R550m
	ALS out	R1200m	R1200m	R1200m	R1200m
	RNP	877' (250')	877' (250')	877' (250')	905' (278')
	LNAV/VNAV	R750m	R750m	R750m	R750m
	ALS out	R1300m	R1300m	R1300m	R1300m
	② RNP	990' (363')	990' (363')	990' (363')	990' (363')
	LNAV	R1000m	R1000m	R1000m	R1000m
	ALS out	R1500m	R1500m	R1700m	R1700m
	② VOR	960' (333')	960' (333')	960' (333')	960' (333')
	ALS out	R800m R1500m	R800m R1500m	R800m R1500m	R800m R1500m
21	② NDB Z	990' (363')	990' (363')	990' (363')	990' (363')
	ALS out	R1000m R1500m	R1000m R1500m	R1000m R1700m	R1000m R1700m
	② NDB Y	1040' (413')	1040' (413')	1040' (413')	1040' (413')
	ALS out	R1200m R1500m	R1200m R1500m	R1200m R1900m	R1200m R1900m
	ILS Z, Y or X	823' (200')	823' (200')	823' (200')	823' (200')
	ALS out	① R550m R1200m	① R550m R1200m	① R550m R1200m	① R550m R1200m
	GLS	823' (200')	823' (200')	823' (200')	823' (200')
	ALS out	① R550m R1200m	① R550m R1200m	① R550m R1200m	① R550m R1200m
	② LOC Z or Y	910' (287')	910' (287')	910' (287')	910' (287')
	ALS out	R750m R1400m	R750m R1400m	R750m R1400m	R750m R1400m
21	② LOC X	890' (267')	890' (267')	890' (267')	890' (267')
	ALS out	R750m R1300m	R750m R1300m	R750m R1300m	R750m R1300m
	RNP	903' (280')	915' (292')	923' (300')	934' (311')
	LNAV/VNAV	R750m	R750m	R750m	R750m
	ALS out	R1300m	R1400m	R1400m	R1400m
	② RNP	910' (287')	910' (287')	930' (307')	950' (327')
	LNAV	R750m	R750m	R750m	R800m
	ALS out	R1400m	R1400m	R1400m	R1500m
	② VOR	920' (297')	920' (297')	920' (297')	920' (297')
	ALS out	R750m R1400m	R750m R1400m	R750m R1400m	R750m R1400m
21	② NDB Z	930' (307')	930' (307')	930' (307')	930' (307')
	ALS out	③ R700m R1400m	③ R700m R1400m	③ R700m R1400m	③ R700m R1400m
	② NDB Y	1380' (757')	1380' (757')	1380' (757')	1380' (757')
	ALS out	R1500m R2400m	R1500m R2400m	R1500m R2400m	R1500m R2400m

① RVR 750m when a Flight Director or Autopilot or HUDLS to DA is not used.

② Continuous Descent Final Approach.

③ R750m for CDFA 2D operations.

UWKE/NBC



EASA AIR OPS
NIZHNEKAMSK, RUSSIA
BEGISHEVO

CIRCLE-TO-LAND ⓘ	100 KT	135 KT	180 KT	205 KT
	1070' (427')	1190' (547')	1290' (647')	1350' (707')
After NDB Y 21	1380' (757')	1380' (757')	1380' (757')	1380' (757')
	V1500m	V1600m	V2400m	V3600m

ⓘ Prohibited in sector inbound 228°-018° clockwise.

TAKE-OFF

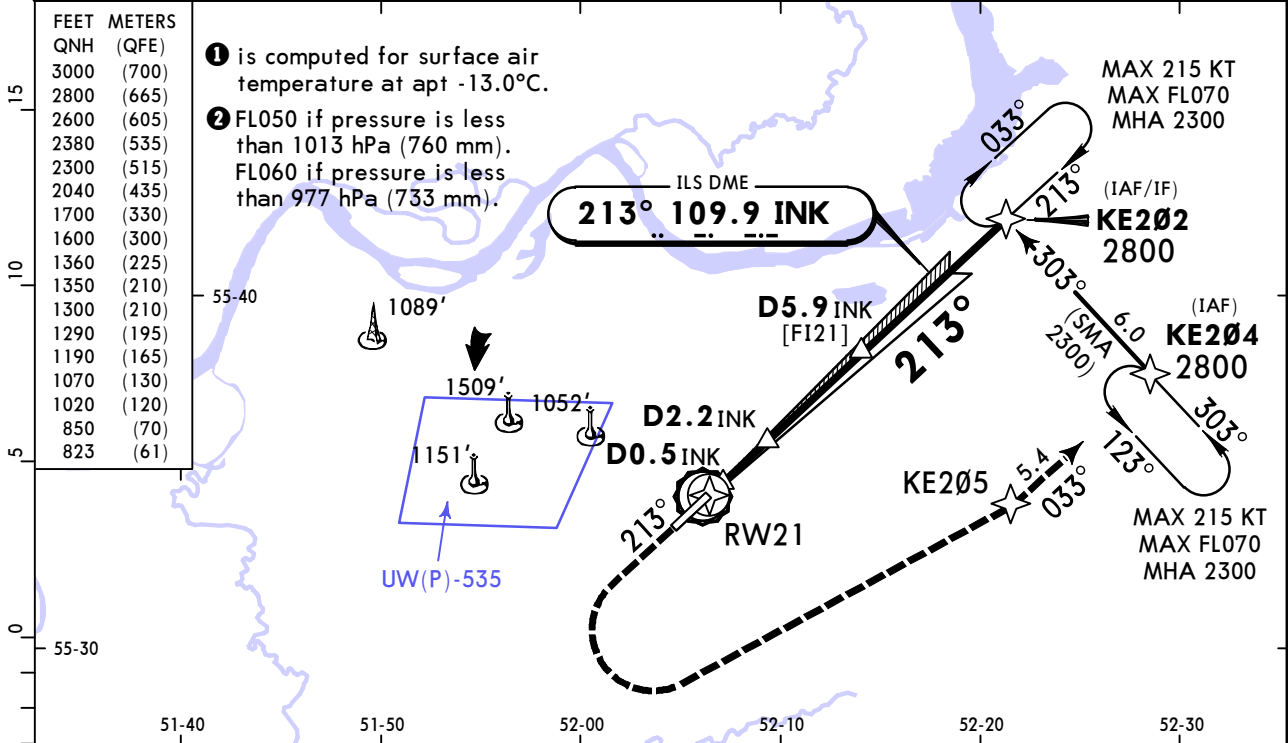
Low Visibility Procedures required		RCLM or RL	RL	Adequate Vis Ref	
Approval for Low Visibility Take-off required				DAY	NIGHT
RCLM & RL & RVR					
DAY	NIGHT				
R300m		R/V400m		R/V500m	NA

UWKE/NBC
BEGISHEVO

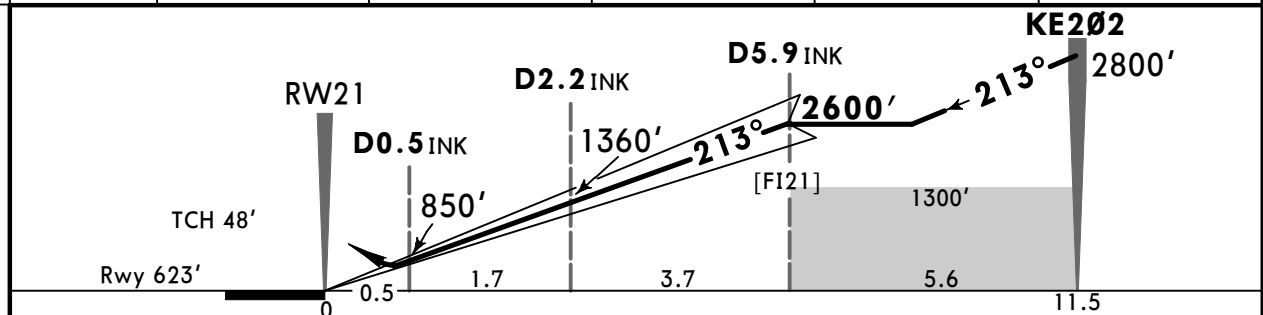
JEPPESEN
21 NOV 25 **(11-1)** Eff 27 Nov

NIZHNEKAMSK, RUSSIA
ILS Z Rwy 21

ATIS 134.2		BEGISHEVO Tower (R) 127.9		BEGISHEVO Start (TWR) 121.2	
LOC INK 109.9	Final Apch Crs 213°	D5.9 INK 2600' (1977')	ILS DA(H) 823' (200')	Apt Elev 643' Rwy 623'	2800 MSA ARP ①
MISSED APCH: Climb to 1600', turn LEFT (MAX 230 KT) to KE205, then to KE204 climbing to 2800' or above, then join holding or according to chart.					
Alt Set: hPa (MM on req)		Rwy Elev: 23 hPa	Trans level: FL040 ②	Trans alt: 3000'	
RNAV 1 for initial and missed apch.		1. GNSS required. 2. DME required. 3. ILS DME reads zero at rwy 21 thresh.			



DIST to RW21	1.1	2.2	3.2	4.3	5.4
ALTITUDE	1020'	1360'	1700'	2040'	2380'



Gnd speed-Kts	70	90	100	120	140	160	HIALS PAPI	1600'	230 KT KE205
Gs	3.00°	372	478	531	637	849			

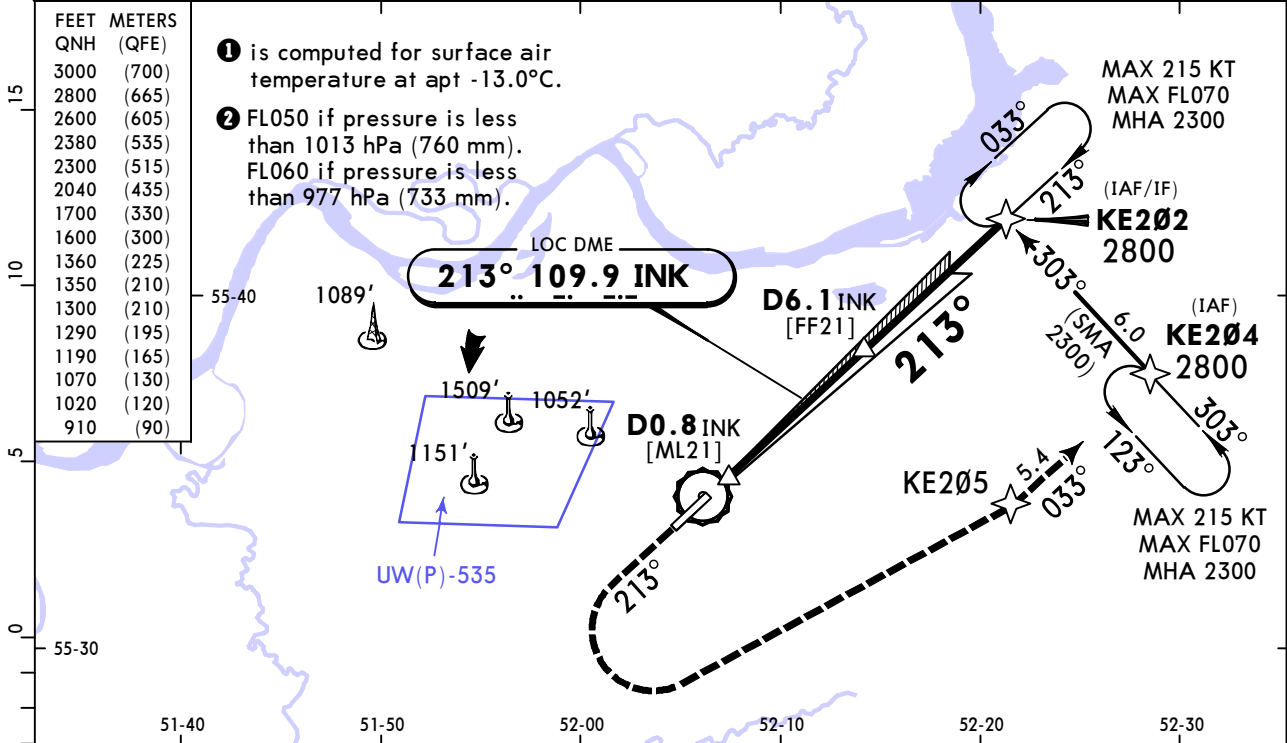
PANS OPS	Std	STRAIGHT-IN LANDING ILS		CIRCLE-TO-LAND		
		ILS		Prohibited in sector inbound 228° - 018° clockwise		
		DA(H) 823' (200')				
		ALS out		Max KT	MDA(H)	
	A	R550m	R1200m	100	1070' (427')	V1500m
B			135	1190' (547')	V1600m	
C			180	1290' (647')	V2400m	
D			205	1350' (707')	V3600m	

UWKE/NBC
BEGISHEVO

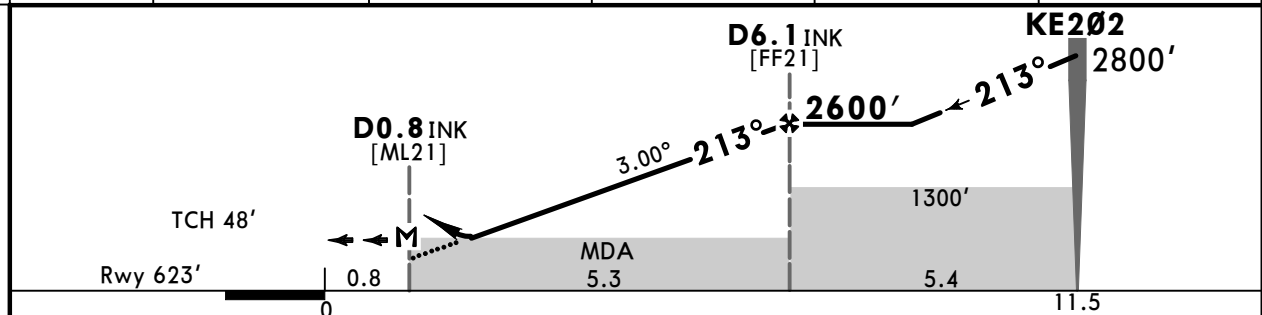
JEPPESEN
21 NOV 25 **(11-2)** **Eff 27 Nov**

NIZHNEKAMSK, RUSSIA
LOC Z Rwy 21

ATIS 134.2		BEGISHEVO Tower (R) 127.9		BEGISHEVO Start (TWR) 121.2	
LOC INK 109.9	Final Apch Crs 213°	D6.1 INK 2600' (1977')	DA/MDA(H) 910' (287')	Apt Elev 643' Rwy 623'	2800 MSA ARP ①
MISSED APCH: Climb to 1600', turn LEFT (MAX 230 KT) to KE205, then to KE204 climbing to 2800' or above, then join holding or according to chart.					
Alt Set: hPa (MM on req)		Rwy Elev: 23 hPa	Trans level: FL040 ②	Trans alt: 3000'	
RNAV 1 for initial and missed apch.		1. GNSS required. 2. DME required. 3. LOC DME reads zero at rwy 21 thresh. 4. Timing not authorized for defining MAP.			



DIST to THR	1.1	2.2	3.2	4.3	5.4
ALTITUDE	1020'	1360'	1700'	2040'	2380'



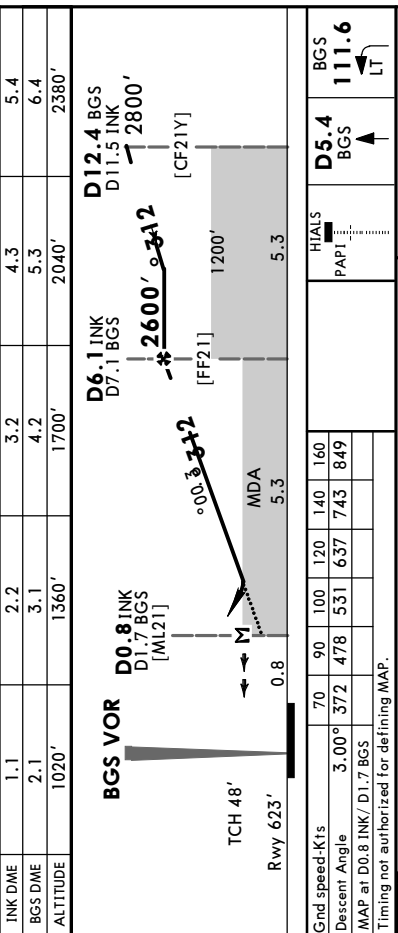
Gnd speed-Kts	70	90	100	120	140	160	HIALS PAPI	1600'	230 KT KE205 MAX LT
Descent Angle	3.00°	372	478	531	637	743			
MAP at D0.8 INK									

PAINS OPS	Std STRAIGHT-IN LANDING		CIRCLE-TO-LAND Prohibited in sector inbound 228° - 018° clockwise	
	CDFA ① DA/MDA(H) 910' (287')			
	ALS out		Max KT	MDA(H)
	A	R750m	R1400m	100 1070' (427') V1500m
B			135 1190' (547') V1600m	
C			180 1290' (647') V2400m	
D			205 1350' (707') V3600m	
① VNAV DA(H) in lieu of MDA(H) depends on operator policy.				

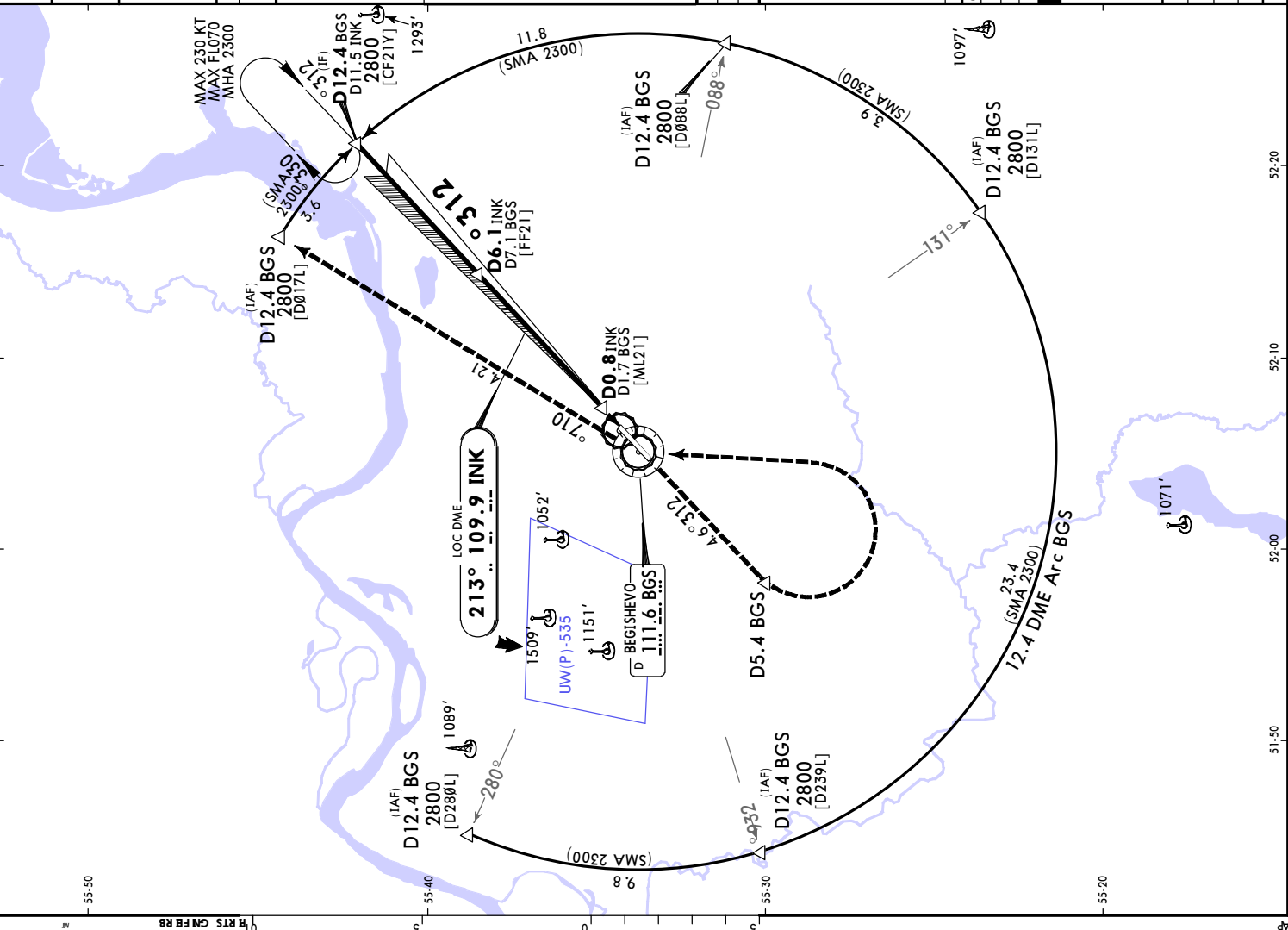
ATIS		BEGISHEVO Tower (R)		BEGISHEVO Start (TWR)	
134.2		127.9		121.2	
LOC INK	Final Apch Crs	D6.1 INK	DA/MDA(H)	Apt Elev 643'	2800
109.9	213°	2600' (1977')	910' (287')	Rwy 623'	
MISSED APCH: Climb STRAIGHT AHEAD to D5.4 BGS, then turn LEFT to BGS VOR DME, then proceed on R-017 BGS to D12.4 BGS climbing to 2800' or above, then according to chart.					
Alt Set: hPa (MM on req)		Rwy Elev: 23 hPa		Trans level: FL040	
1. DME required. 2. LOC DME reads zero at rwy 21 threshold.		Trans alt: 3000'			

1. is computed for surface air temperature at apt -13.0°C.
 2. FLO50 if pressure is less than 1013 hPa (760 mm). FLO60 if pressure is less than 977 hPa (733 mm).

FEET METERS	QNH (QFE)	3000 (700)	2800 (665)	2600 (605)	2380 (535)	2300 (515)	2040 (435)	1700 (330)	1360 (225)	1350 (210)	1290 (195)	1200 (180)	1190 (165)	1080 (130)	1020 (120)	910 (90)
INK DME	2.2	3.2	4.3	5.4												
BGS DME	2.1	4.2	5.3	6.4												
ALTITUDE	1020'	1700'	2040'	2380'												



Gnd speed-Kts		70	90	100	120	140	160
Descent Angle		3.00°	372	478	531	637	743
MAP at D0.8 INK/D1.7 BGS							
Timing not authorized for defining MAP.							
Std							
STRAIGHT-IN LANDING							
CIRCLE-TO-LAND							
Prohibited in sector inbound 228° - 018° clockwise							
CDFA		DA/MDA(H) 910' (287')					
ALS out		R1400m					
ALS in		R750m					
ALS out		R1400m					
ALS in		R750m					
ALS out		R1400m					
ALS in		R750m					
VNAV DA(H) in lieu of MDA(H) depends on operator policy.							

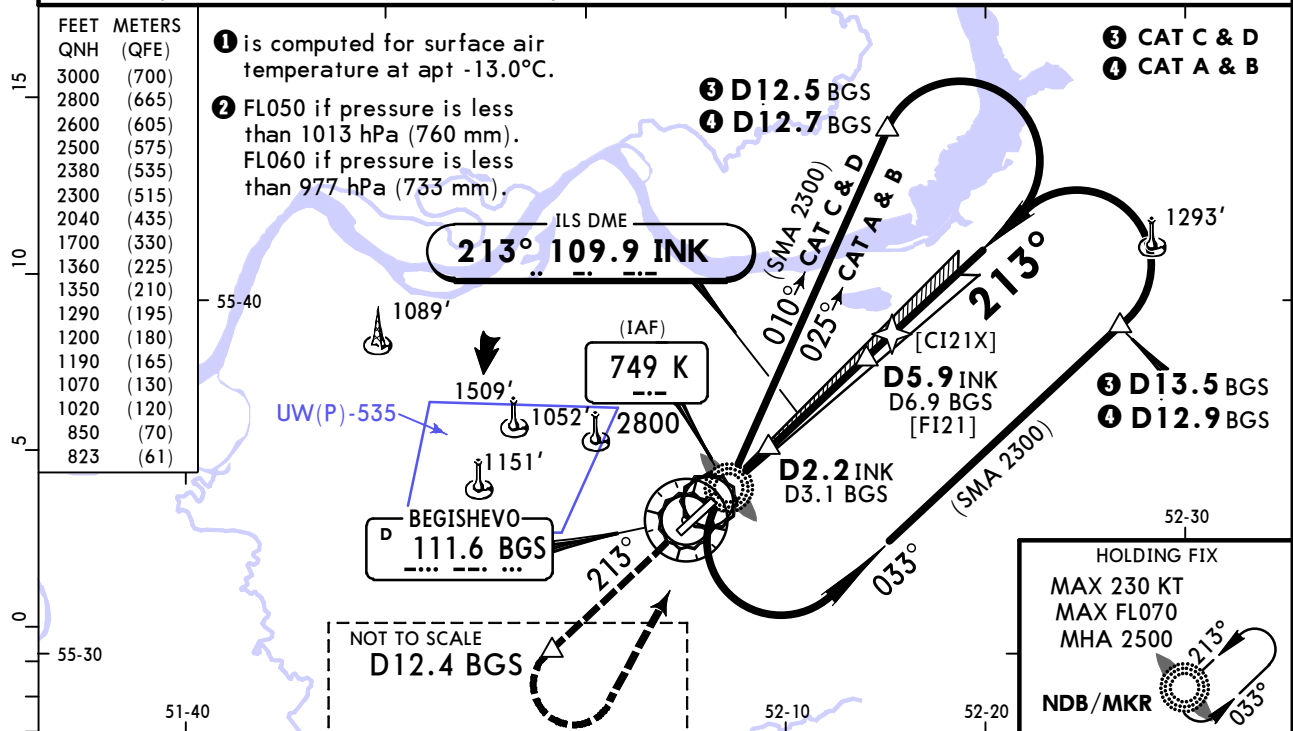


**UWKE/NBC
BEGISHEVO**

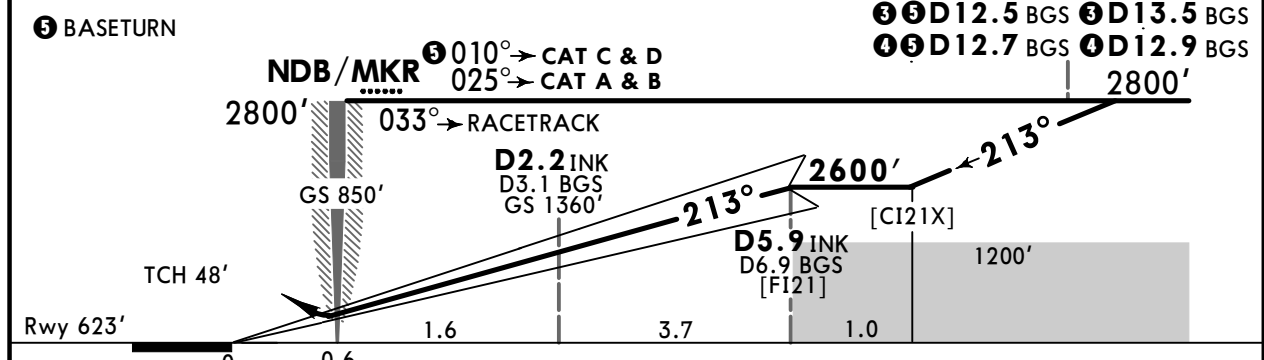
JEPPESEN
5 DEC 25 **(11-5)**

**NIZHNEKAMSK, RUSSIA
ILS X Rwy 21**

ATIS 134.2		BEGISHEVO Tower (R) 127.9		BEGISHEVO Start (TWR) 121.2	
LOC INK 109.9	Final Apch Crs 213°	D5.9 INK 2600' (1977')	ILS DA(H) 823' (200')	Apt Elev 643' Rwy 623'	2800 MSA ARP ①
MISSED APCH: Climb STRAIGHT AHEAD to D12.4 BGS, then turn LEFT to K NDB/MKR climbing to 2800' or above, then join holding or according to chart.					
Alt Set: hPa (MM on req)		Rwy Elev: 23 hPa	Trans level: FL040 ②	Trans alt: 3000'	
1. DME required. 2. ILS DME reads zero at rwy 21 thresh.					



BGS DME	2.1	3.1	4.2	5.3	6.4
ALTITUDE	1020'	1360'	1700'	2040'	2380'



Gnd speed-Kts	70	90	100	120	140	160	HIALS PAPI	D12.4 BGS	K 749	MIN 2800'
GS	3.00°	372	478	531	637	849				

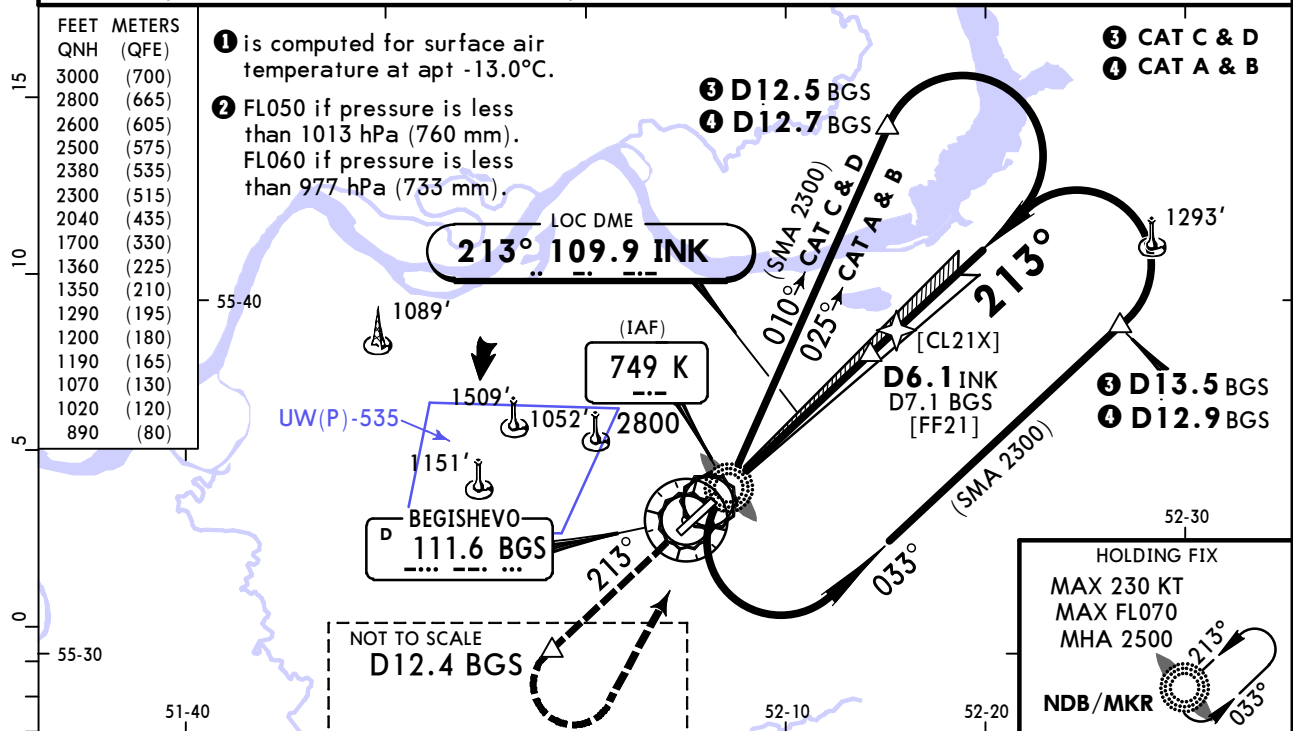
PANS OPS	Std STRAIGHT-IN LANDING		CIRCLE-TO-LAND	
	ILS		Prohibited in sector inbound 228° - 018° clockwise	
	DA(H) 823' (200')			
	ALS out		Max KT	MDA(H)
	A	R550m	R1200m	100 1070' (427') V1500m
B			135 1190' (547') V1600m	
C			180 1290' (647') V2400m	
D			205 1350' (707') V3600m	
R750m when a Flight Director or Autopilot or HUD to DA is not used.				

UWKE/NBC BEGISHEVO

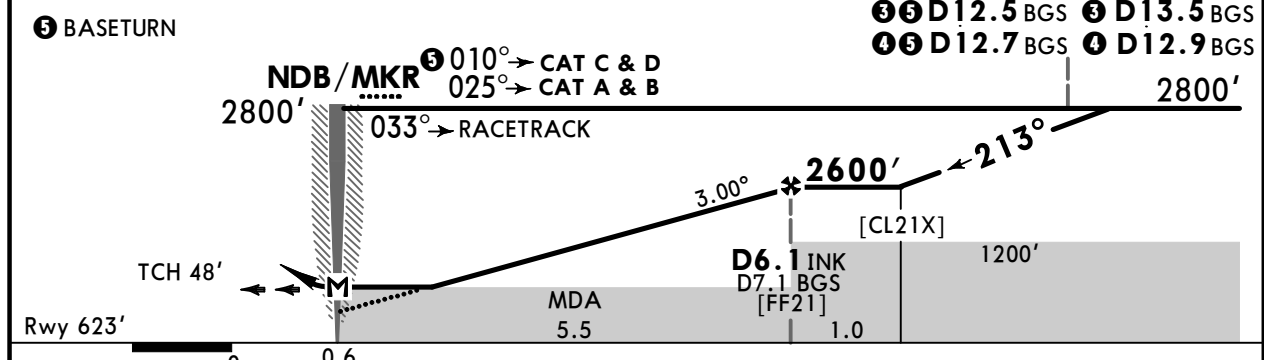
JEPPESEN
5 DEC 25 **(11-6)**

NIZHNEKAMSK, RUSSIA
LOC X Rwy 21

ATIS 134.2		BEGISHEVO Tower (R) 127.9		BEGISHEVO Start (TWR) 121.2	
LOC INK 109.9	Final Apch Crs 213°	D6.1 INK 2600' (1977')	DA/MDA(H) 890' (267')	Apt Elev 643' Rwy 623'	2800 MSA ARP ①
MISSED APCH: Climb STRAIGHT AHEAD to D12.4 BGS, then turn LEFT to K NDB/MKR climbing to 2800' or above, then join holding or according to chart.					
Alt Set: hPa (MM on req)		Rwy Elev: 23 hPa	Trans level: FL040 ②	Trans alt: 3000'	
1. DME required. 2. LOC DME reads zero at rwy 21 threshold.					



BGS DME	2.1	3.1	4.2	5.3	6.4
ALTITUDE	1020'	1360'	1700'	2040'	2380'



Gnd speed-Kts	70	90	100	120	140	160	HIALS PAPI D12.4 BGS K 749 MIN 2800'
Descent angle	3.00°	372	478	531	637	849	
MAP at NDB/MKR							

Timing not authorized for defining MAP.

PANS OPS	Std STRAIGHT-IN LANDING		CIRCLE-TO-LAND Prohibited in sector inbound 228° - 018° clockwise	
	CDFA			
	① DA/MDA(H) 890' (267')			
	ALS out		Max KT	MDA(H)
	A	R750m	R1300m	100 1070' (427') V1500m
B			135 1190' (547') V1600m	
C			180 1290' (647') V2400m	
D			205 1350' (707') V3600m	

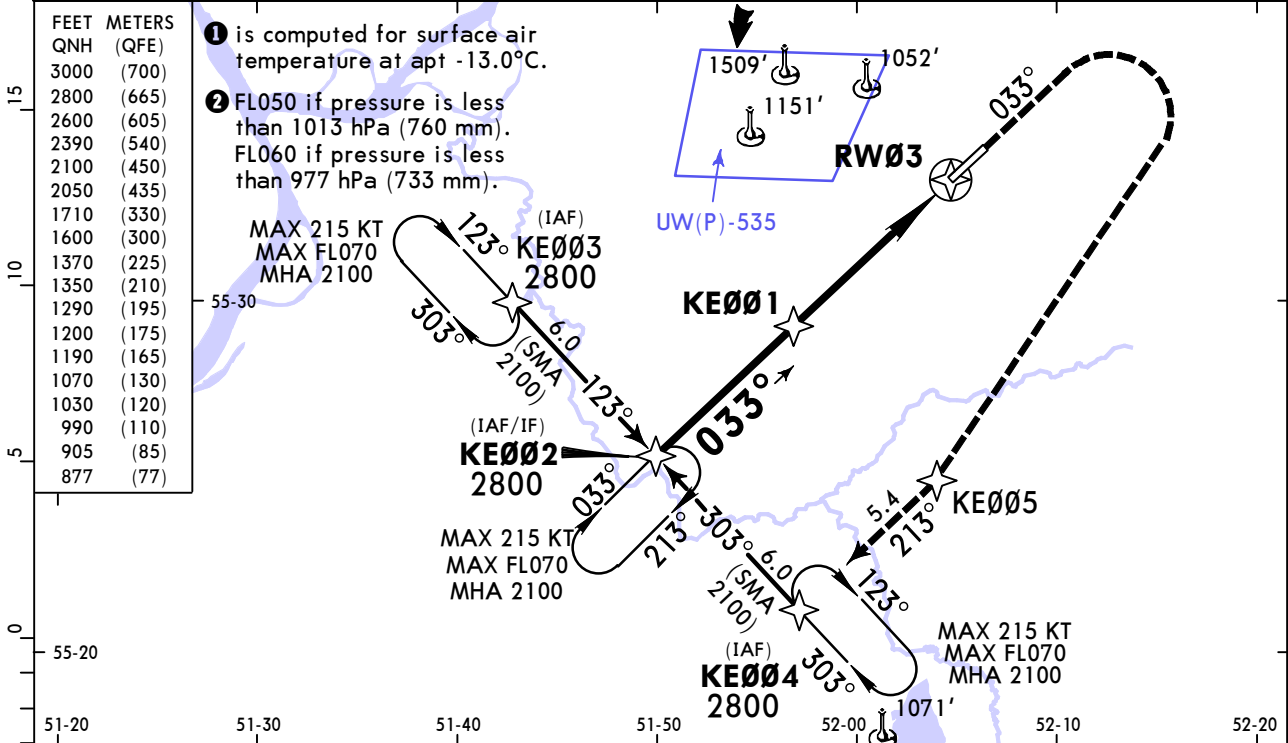
① VNAV DA(H) in lieu of MDA(H) depends on operator policy.

UWKE/NBC
BEGISHEVO

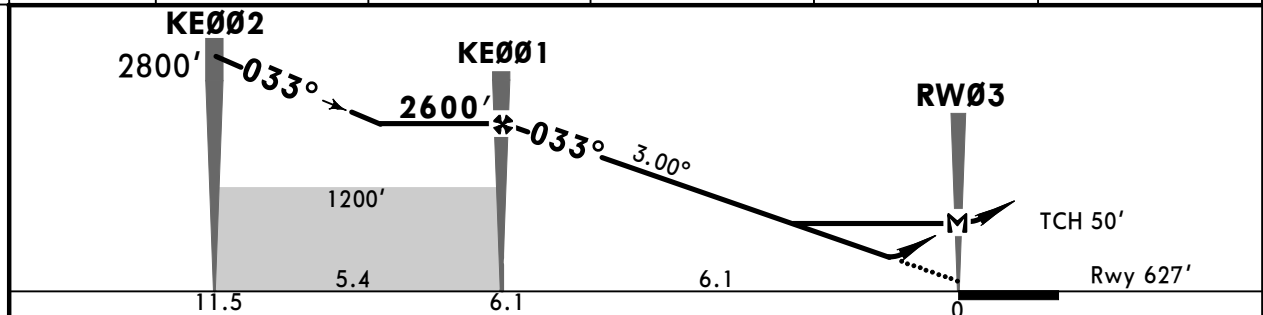
JEPPESEN
21 NOV 25 **(12-1)** Eff 27 Nov

NIZHNEKAMSK, RUSSIA
RNP Rwy 03

ATIS 134.2		BEGISHEVO Tower (R) 127.9		BEGISHEVO Start (TWR) 121.2	
RNAV	Final Apch Crs 033°	KE001 2600' (1973')	LNAV/VNAV DA(H) Refer to Minimums	Apt Elev 643' Rwy 627'	2800 MSA ARP ①
MISSED APCH: Climb to 1600', turn RIGHT (MAX 230 KT) to KE005, then to KE004 climbing to 2800' or above, then join holding or according to chart.					
Alt Set: hPa (MM on req)		Rwy Elev: 23 hPa	Trans level: FL040 ②	Trans alt: 3000'	
RNP apch.	1. GNSS required. 2. Baro-VNAV not authorized below -33.0°C. 3. Timing not authorized for defining MAP.				



DIST to RW03	5.4	4.3	3.2	2.2	1.1
ALTITUDE	2390'	2050'	1710'	1370'	1030'



Gnd speed-Kts	70	90	100	120	140	160	HIALS PAPI	1600' ↑	230 KT MAX RT	KE005 ↑
Glide Path Angle	3.00°	372	478	531	637	743				
MAP at RW03										

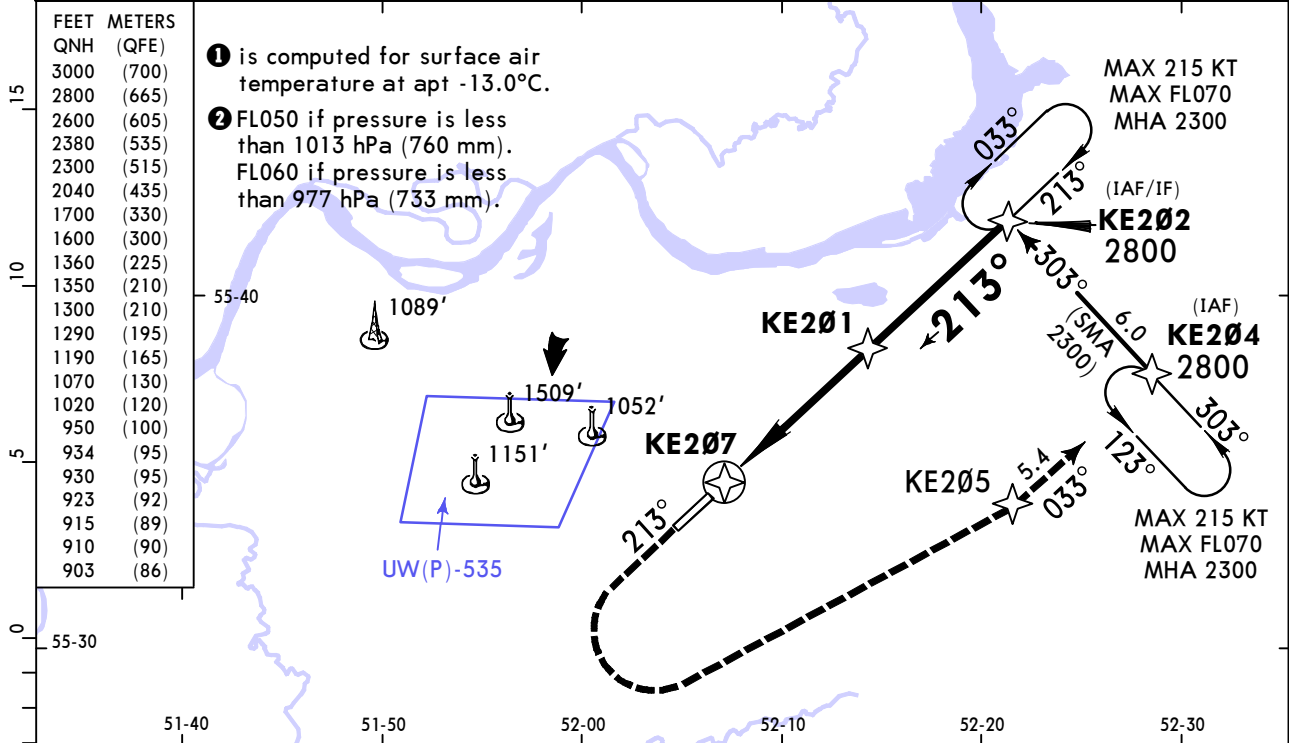
PANS OPS	Std STRAIGHT-IN LANDING			CIRCLE-TO-LAND		
	LNAV/VNAV			LNAV CDFA		
	DA(H) ABC: 877' (250') D: 905' (278')			DA/MDA(H) 990' (363')		
	ALS out			ALS out		
A				R1500m	Max KT	MDA(H)
B					100	1070' (427') V1500m
C	R750m	R1300m	R1000m		135	1190' (547') V1600m
D				R1700m	180	1290' (647') V2400m
					205	1350' (707') V3600m

UWKE/NBC BEGISHEVO

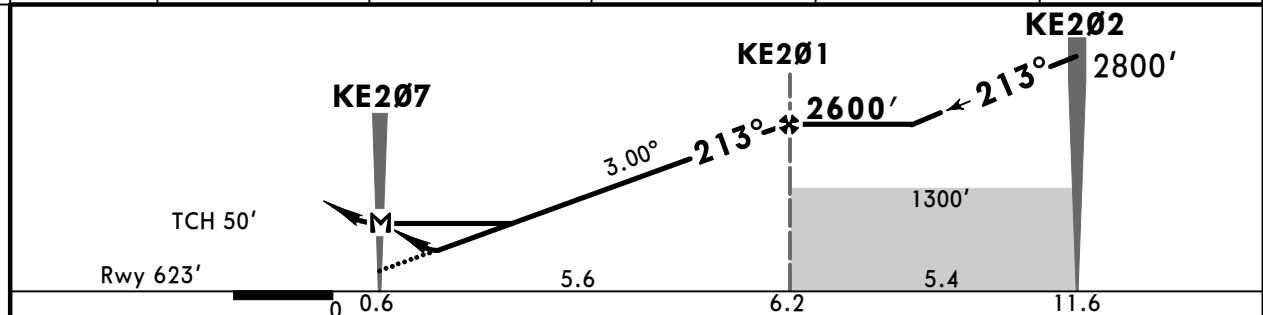
JEPPESEN
21 NOV 25 (12-2) Eff 27 Nov

NIZHNEKAMSK, RUSSIA
RNP Rwy 21

ATIS 134.2		BEGISHEVO Tower (R) 127.9		BEGISHEVO Start (TWR) 121.2	
RNAV	Final Apch Crs 213°	KE201 2600' (1977')	LNAV/VNAV DA(H) Refer to Minimums	Apt Elev 643' Rwy 623'	2800 MSA ARP ①
MISSED APCH: Climb to 1600', turn LEFT (MAX 230 KT) to KE205, then to KE204 climbing to 2800' or above, then join holding or according to chart.					
Alt Set: hPa (MM on req)		Rwy Elev: 23 hPa		Trans level: FL040 ②	
RNP apch.		1. GNSS required. 2. Baro-VNAV not authorized below -33.0°C. 3. Timing not authorized for defining MAP.			



DIST to RW21	1.1	2.2	3.2	4.3	5.4
ALTITUDE	1020'	1360'	1700'	2040'	2380'



Gnd speed-Kts	70	90	100	120	140	160	HIALS PAPI	1600'	230 KT MAX LT	KE205
Glide Path Angle	3.00°	372	478	531	637	743				
MAP at KE207										

PANS OPS	Std STRAIGHT-IN LANDING				CIRCLE-TO-LAND	
	LNAV/VNAV		LNAV CDFA		Prohibited in sector inbound 228° - 018° clockwise	
	DA(H) A: 903' (280') C: 923' (300') B: 915' (292') D: 934' (311')		DA/MDA(H) AB: 910' (287') D: 950' (327')			
	ALS out		ALS out		Max MDA(H)	
A	R750m	R1300m	R750m	R1400m	100	1070' (427') V1500m
B		R1400m		R1400m	135	1190' (547') V1600m
C		R1400m	R800m	R1500m	180	1290' (647') V2400m
D		R1400m	R800m	R1500m	205	1350' (707') V3600m

① VNAV DA(H) in lieu of MDA(H) depends on operator policy.

UWKE/NBC
BEGISHEVO

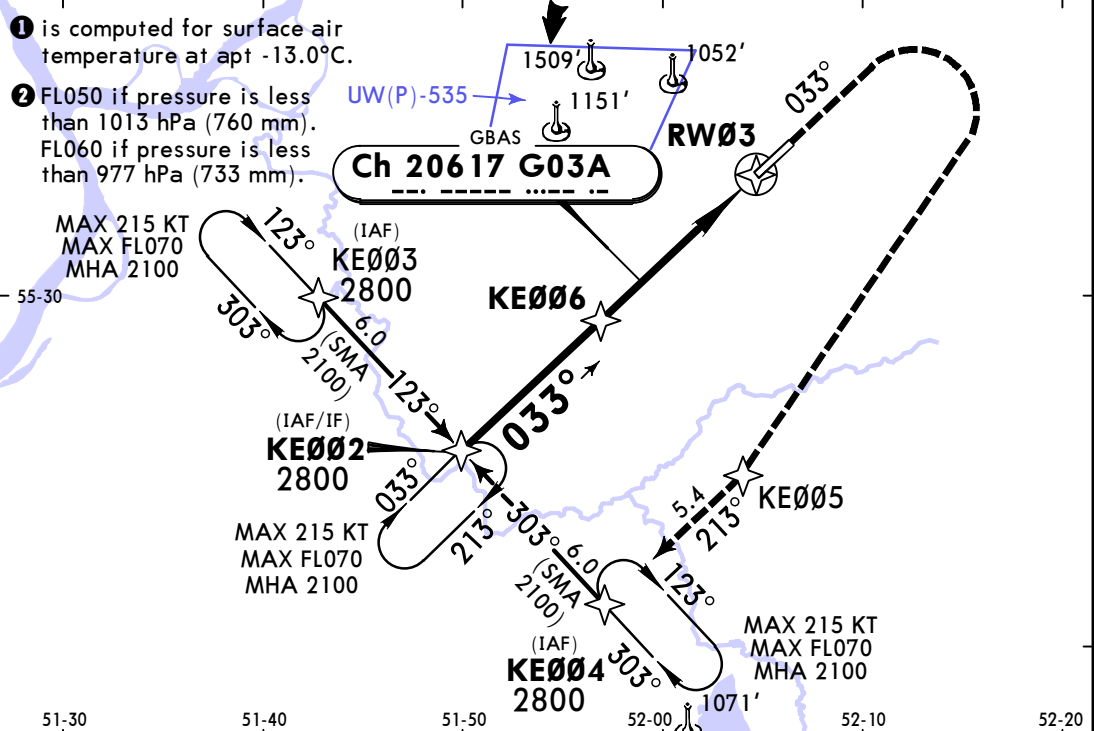
JEPPESEN
21 NOV 25 **12-40** **Eff 27 Nov**

NIZHNEKAMSK, RUSSIA
GLS Rwy 03

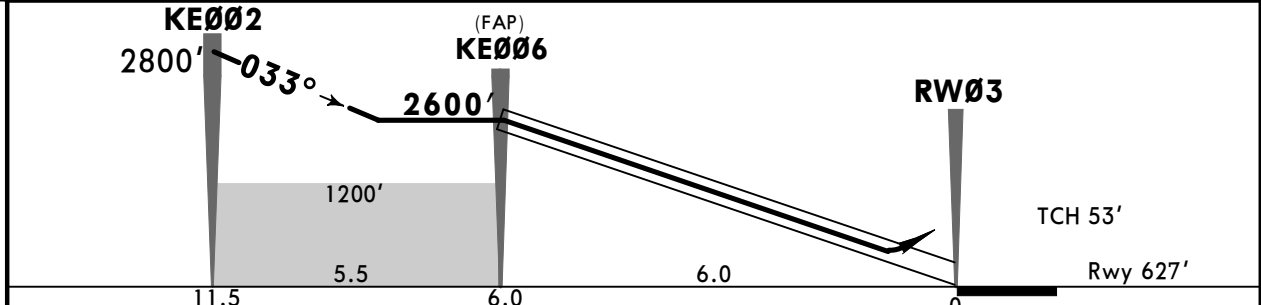
ATIS 134.2		BEGISHEVO Tower (R) 127.9		BEGISHEVO Start (TWR) 121.2	
GBAS Ch 20617 G03A	Final Apch Crs 033°	KE006 2600' (1973')	DA(H) 827' (200')	Apt Elev 643' Rwy 627'	2800 MSA ARP ①
MISSED APCH: Climb to 1600', turn RIGHT (MAX 230 KT) to KE005, then to KE004 climbing to 2800' or above, then join holding or according to chart.					
Alt Set: hPa (MM on req)		Rwy Elev: 23 hPa		Trans level: FL040 ②	
RNAV 1		GNSS required.			

FEET	METERS
3000	(700)
2800	(665)
2600	(605)
2390	(540)
2100	(450)
2050	(435)
1710	(330)
1600	(300)
1370	(225)
1350	(210)
1290	(195)
1200	(175)
1190	(165)
1070	(130)
1030	(120)
827	(61)

① is computed for surface air temperature at apt -13.0°C.
② FL050 if pressure is less than 1013 hPa (760 mm).
FL060 if pressure is less than 977 hPa (733 mm).



DIST to RW03	5.4	4.3	3.2	2.2	1.1
ALTITUDE	2390'	2050'	1710'	1370'	1030'



Gnd speed-Kts	70	90	100	120	140	160	HIALS PAPI	1600' ↑	230 KT MAX RT	KE005 ↑
Glide Path Angle	3.00°	372	478	531	637	743				

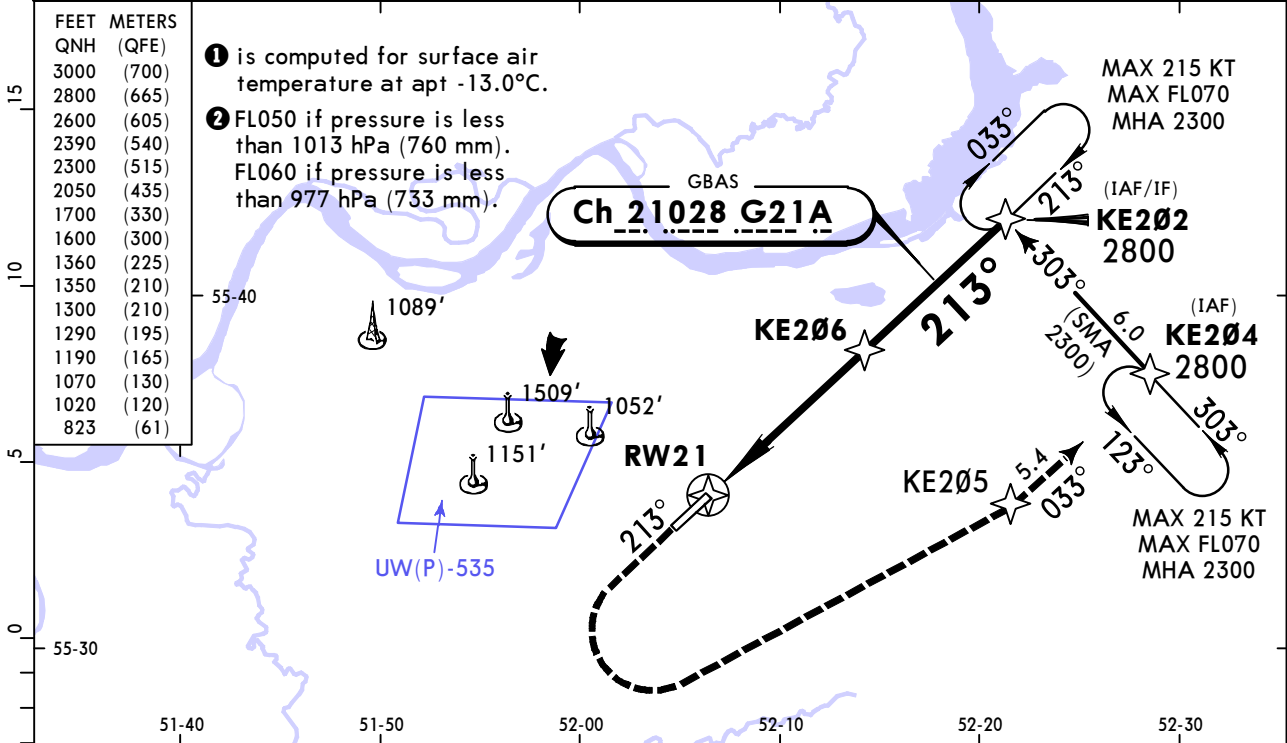
PANS OPS	Std STRAIGHT-IN LANDING		CIRCLE-TO-LAND		
	GLS		Prohibited in sector inbound 228° - 018° clockwise		
	DA(H) 827' (200')				
	ALS out		Max KT		
A	R550m	R1200m	100	1070' (427')	V1500m
B			135	1190' (547')	V1600m
C			180	1290' (647')	V2400m
D			205	1350' (707')	V3600m
R750m when a Flight Director or Autopilot or HUD to DA is not used.					

UWKE/NBC BEGISHEVO

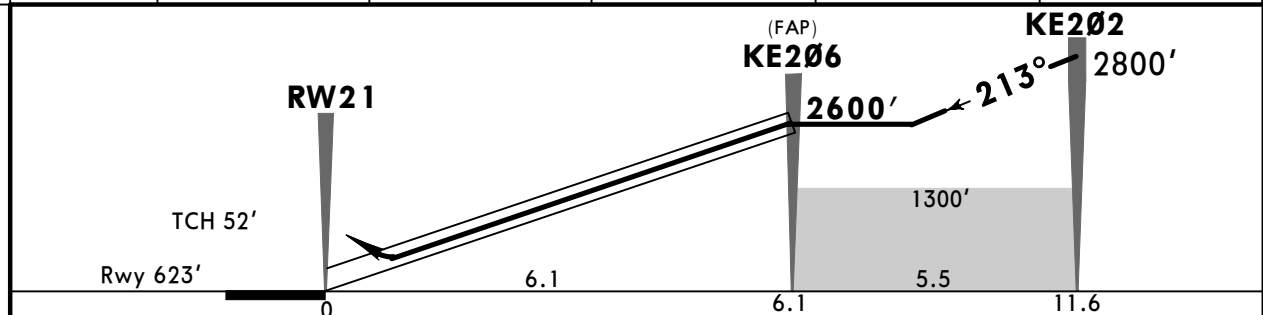
JEPPESEN
21 NOV 25 (12-41) Eff 27 Nov

NIZHNEKAMSK, RUSSIA
GLS Rwy 21

ATIS 134.2		BEGISHEVO Tower (R) 127.9		BEGISHEVO Start (TWR) 121.2	
GBAS Ch 21028 G21A	Final Apch Crs 213°	KE206 2600' (1977')	DA(H) 823' (200')	Apt Elev 643' Rwy 623'	2800 MSA ARP ①
MISSED APCH: Climb to 1600', turn LEFT (MAX 230 KT) to KE205, then to KE204 climbing to 2800' or above, then join holding or according to chart.					
Alt Set: hPa (MM on req)		Rwy Elev: 23 hPa		Trans level: FL040 ②	
RNAV 1		GNSS required.			



DIST to RW21	1.1	2.2	3.2	4.3	5.4
ALTITUDE	1020'	1360'	1700'	2050'	2390'



Gnd speed-Kts	70	90	100	120	140	160	HIALS PAPI 1600' 230 KT KE205 ↑ MAX ← LT ↑
Glide Path Angle	3.00°	372	478	531	637	743	

PANS OPS	Std STRAIGHT-IN LANDING		CIRCLE-TO-LAND Prohibited in sector inbound 228° - 018° clockwise	
	GLS			
	DA(H) 823' (200')			
	ALS out		Max	MDA(H)
	A	R550m	R1200m	100 1070' (427') V1500m
B			135 1190' (547') V1600m	
C			180 1290' (647') V2400m	
D			205 1350' (707') V3600m	

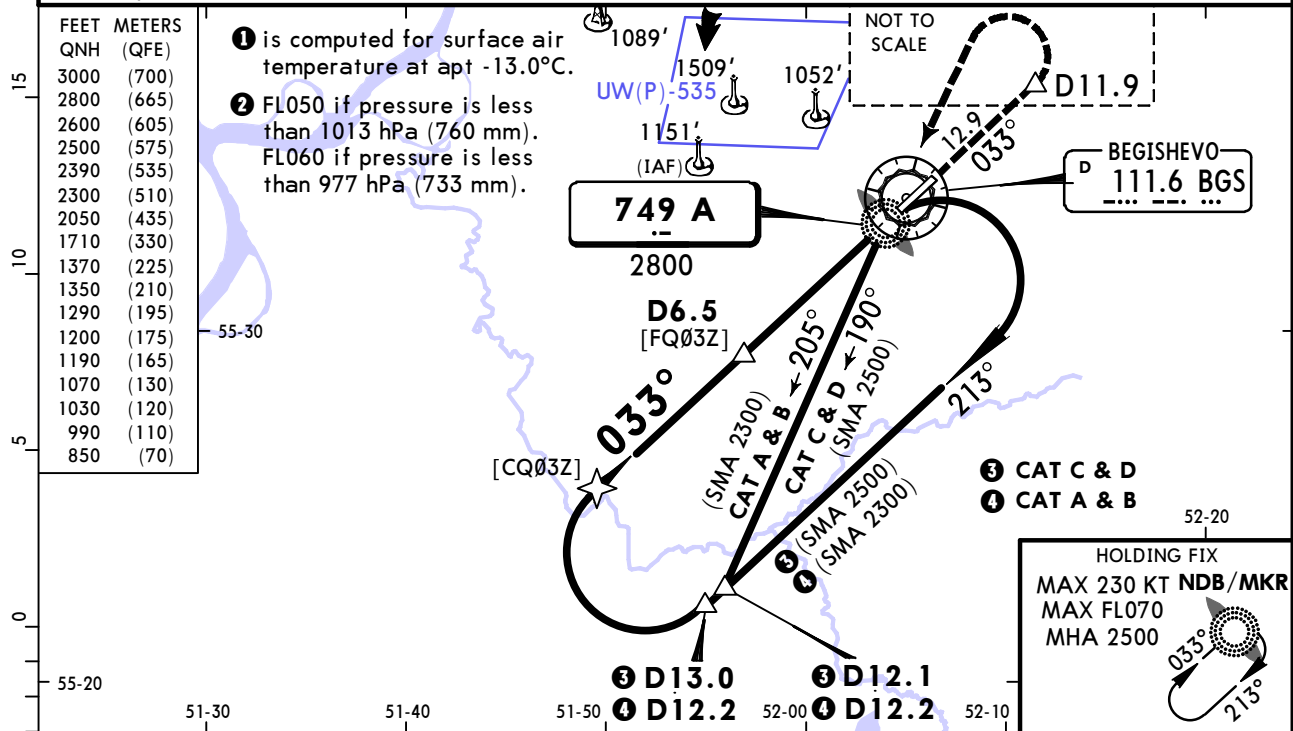
■ R750m when a Flight Director or Autopilot or HUD to DA is not used.

UWKE/NBC BEGISHEVO

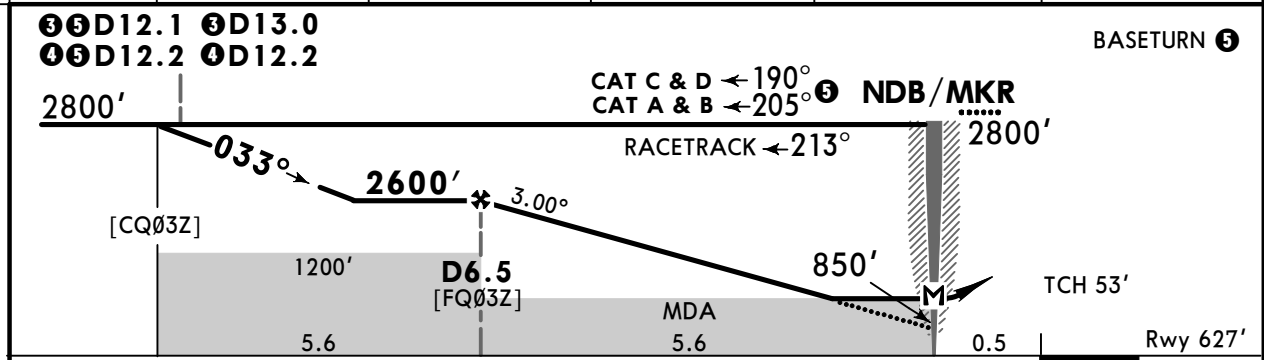
JEPPESEN
5 DEC 25 **(16-1)**

NIZHNEKAMSK, RUSSIA
NDB Z Rwy 03

ATIS 134.2		BEGISHEVO Tower (R) 127.9		BEGISHEVO Start (TWR) 121.2	
NDB A 749	Final Apch Crs 033°	D6.5 2600' (1973')	DA/MDA(H) 990' (363')	Apt Elev 643' Rwy 627'	2800 MSA ARP ①
MISSED APCH: Climb STRAIGHT AHEAD to D11.9, then turn LEFT to A NDB/MKR climbing to 2800' or above, then join holding or according to chart.					
Alt Set: hPa (MM on req)		Rwy Elev: 23 hPa	Trans level: FL040 ②	Trans alt: 3000'	
DME required.					



BGS DME	5.8	4.8	3.7	2.6	1.5
ALTITUDE	2390'	2050'	1710'	1370'	1030'



Gnd speed-Kts	70	90	100	120	140	160	HIALS PAPI D11.9 ↑ A 749 ← LT ↑ MIN 2800'
Descent angle	3.00°	372	478	531	637	743	
MAP at NDB/MKR							
Timing not authorized for defining MAP							

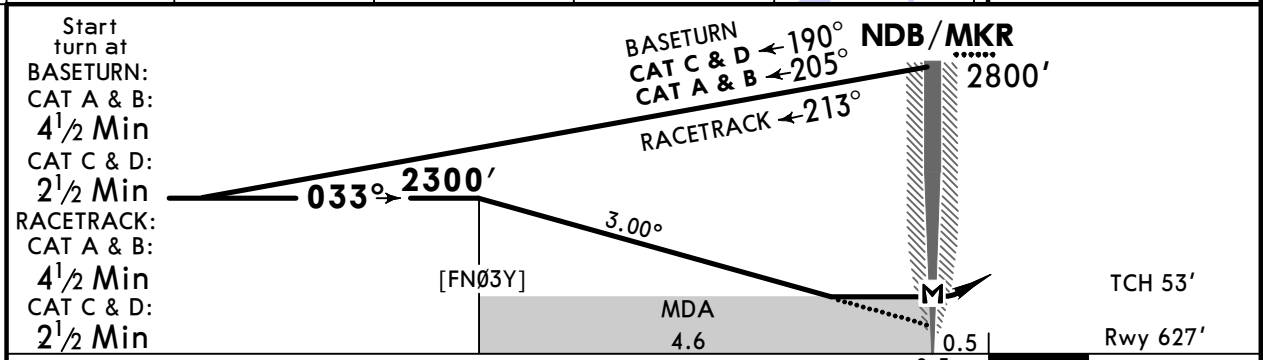
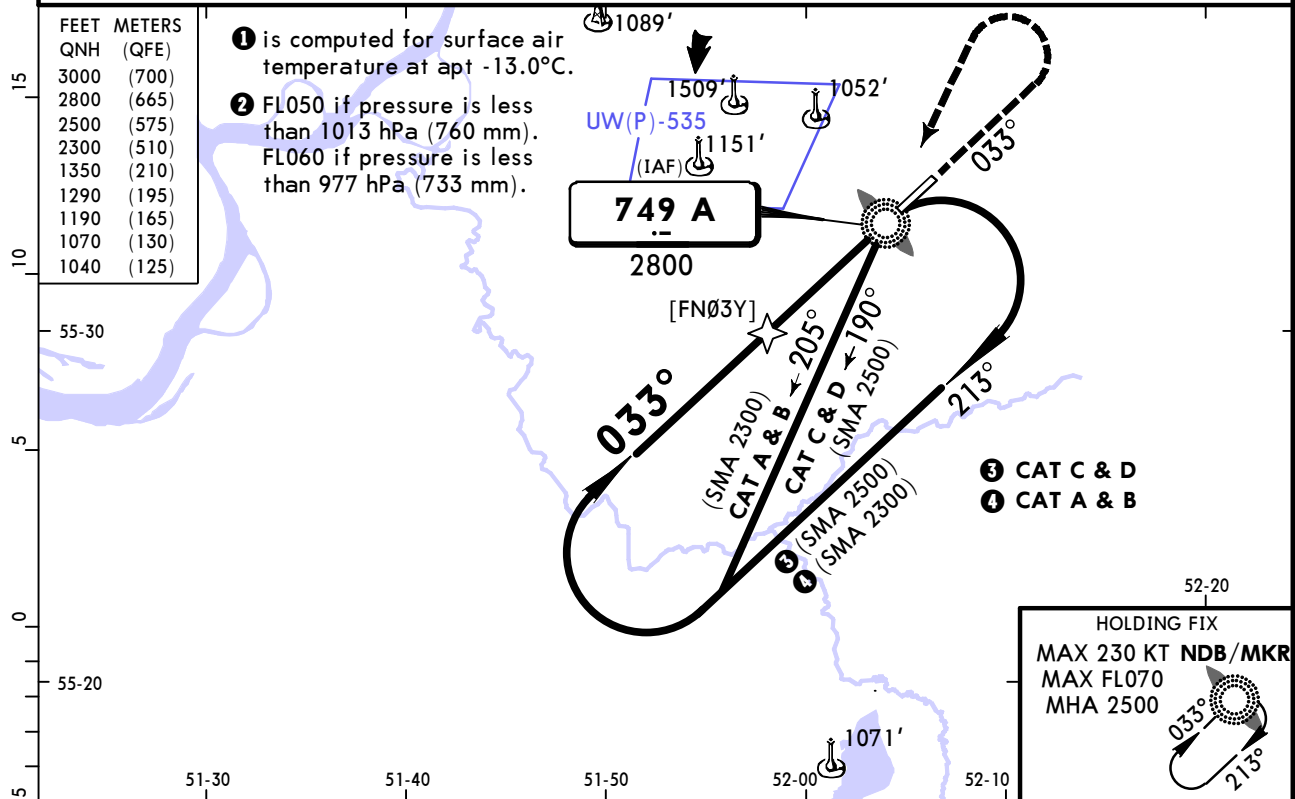
PANS OPS	Std STRAIGHT-IN LANDING			CIRCLE-TO-LAND Prohibited in sector inbound 228°-018° clockwise		
	CDFA					
	DA/MDA(H) 990' (363')					
				ALS out		
	A	R1000m			100	
B	135				1190' (547') V1600m	
C	180				1290' (647') V2400m	
D	205				1350' (707') V3600m	
VNAV DA(H) in lieu of MDA(H) depends on operator policy.						

UWKE/NBC BEGISHEVO

JEPPESEN
5 DEC 25 **(16-2)**

NIZHNEKAMSK, RUSSIA NDB Y Rwy 03

ATIS 134.2		BEGISHEVO Tower (R) 127.9		BEGISHEVO Start (TWR) 121.2	
NDB A 749	Final Apch Crs 033°	[FNØ3Y] 2300' (1673')	DA/MDA(H) 1040' (413')	Apt Elev 643' Rwy 627'	2800 MSA ARP ①
MISSED APCH: Climb STRAIGHT AHEAD to 2500', then turn LEFT to A NDB/MKR climbing to 2800' or above, then join holding or according to chart.					
Alt Set: hPa (MM on req)		Rwy Elev: 23 hPa	Trans level: FL040 ②	Trans alt: 3000'	



Gnd speed-Kts	70	90	100	120	140	160	HIALS PAPI	2500'	A 749	MIN 2800'
Descent angle	3.00°	372	478	531	637	849				
MAP at NDB/MKR										

Std STRAIGHT-IN LANDING			CIRCLE-TO-LAND Prohibited in sector inbound 228°-018° clockwise		
CDFA					
① DA/MDA(H) 1040' (413')					
			ALS out		
A					Max KT
B	R1200m		R1500m		100
C					135
D			R1900m		180
					205
					MDA(H)
					V1500m
					V1600m
					V2400m
					V3600m

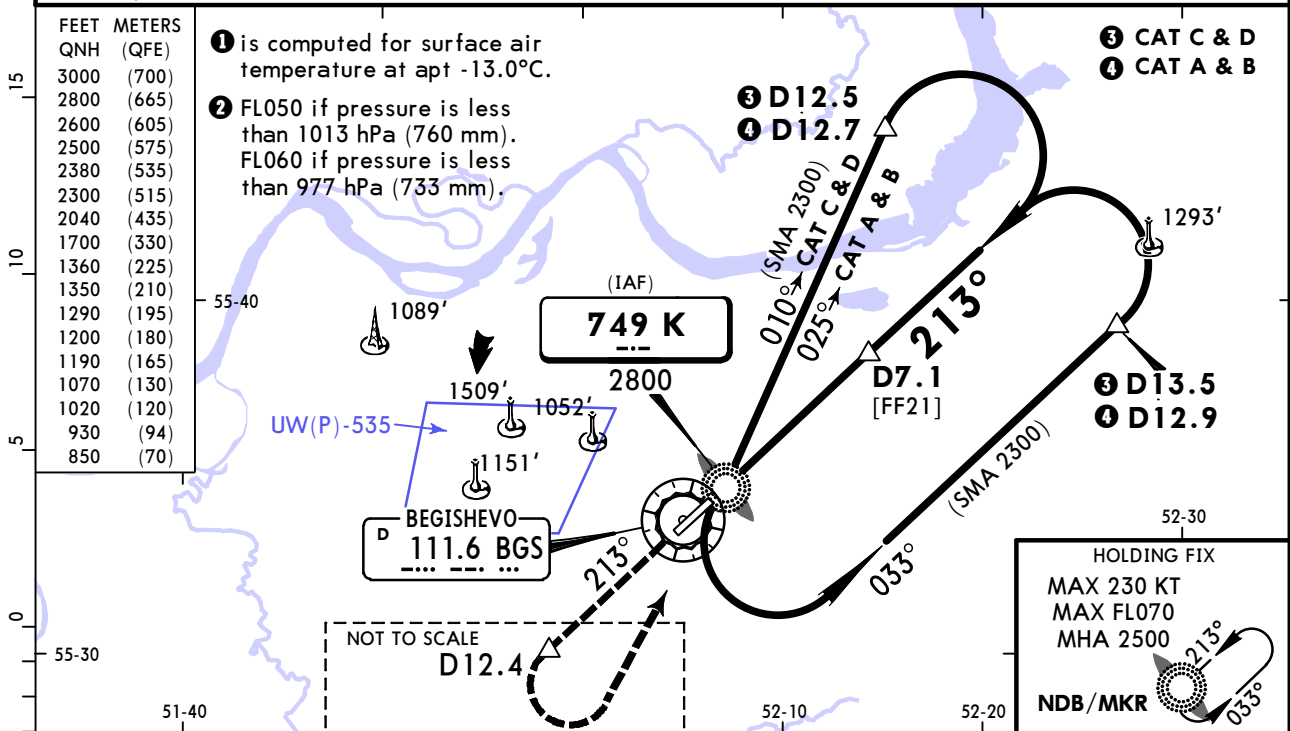
① VNAV DA(H) in lieu of MDA(H) depends on operator policy.
CHANGES: A NDB/MKR established. © JEPPESEN, 2023, 2025. ALL RIGHTS RESERVED.

UWKE/NBC
BEGISHEVO

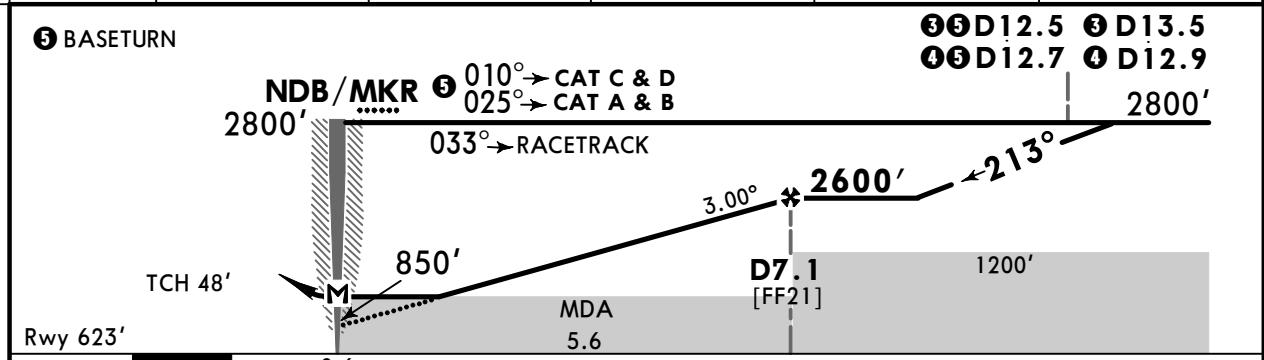
JEPPESEN
5 DEC 25 **(16-3)**

NIZHNEKAMSK, RUSSIA
NDB Z Rwy 21

ATIS 134.2		BEGISHEVO Tower (R) 127.9		BEGISHEVO Start (TWR) 121.2	
NDB K 749	Final Apch Crs 213°	D7.1 2600' (1977')	DA/MDA(H) 930' (307')	Apt Elev 643' Rwy 623'	2800 MSA ARP ①
MISSED APCH: Climb STRAIGHT AHEAD to D12.4, then turn LEFT to K NDB/MKR climbing to 2800' or above, then join holding or according to chart.					
Alt Set: hPa (MM on req)		Rwy Elev: 23 hPa	Trans level: FL040 ②	Trans alt: 3000'	
DME required.					



BGS DME	2.1	3.1	4.2	5.3	6.4
ALTITUDE	1020'	1360'	1700'	2040'	2380'



Gnd speed-Kts	70	90	100	120	140	160	HIALS PAPI D12.4 K 749 MIN 2800'
Descent angle	3.00°	372	478	531	637	849	
MAP at NDB/MKR							

Timing not authorized for defining MAP

PANS OPS	Std STRAIGHT-IN LANDING		CIRCLE-TO-LAND Prohibited in sector inbound 228°-018° clockwise	
	CDFA			
	DA/MDA(H) 930' (307')			
	ALS out		Max KT	MDA(H)
	A	R750m	R1400m	100 1070' (427') V1500m
B			135 1190' (547') V1600m	
C			180 1290' (647') V2400m	
D			205 1350' (707') V3600m	

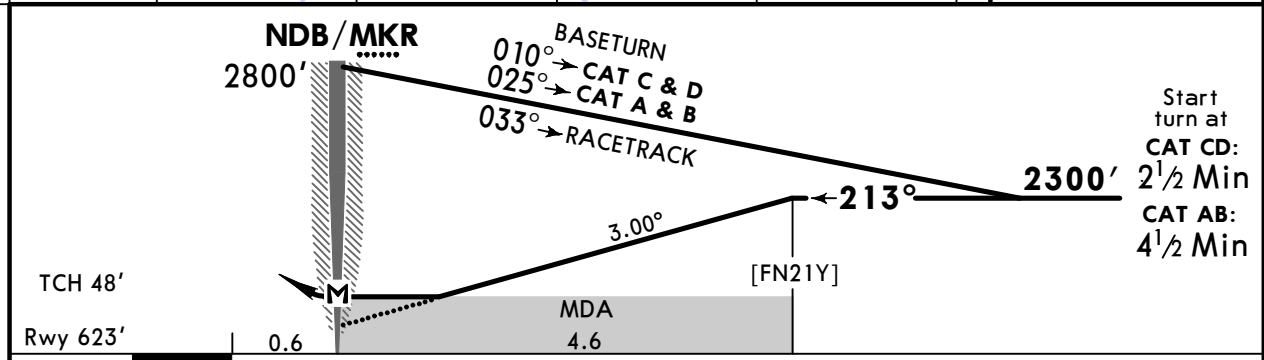
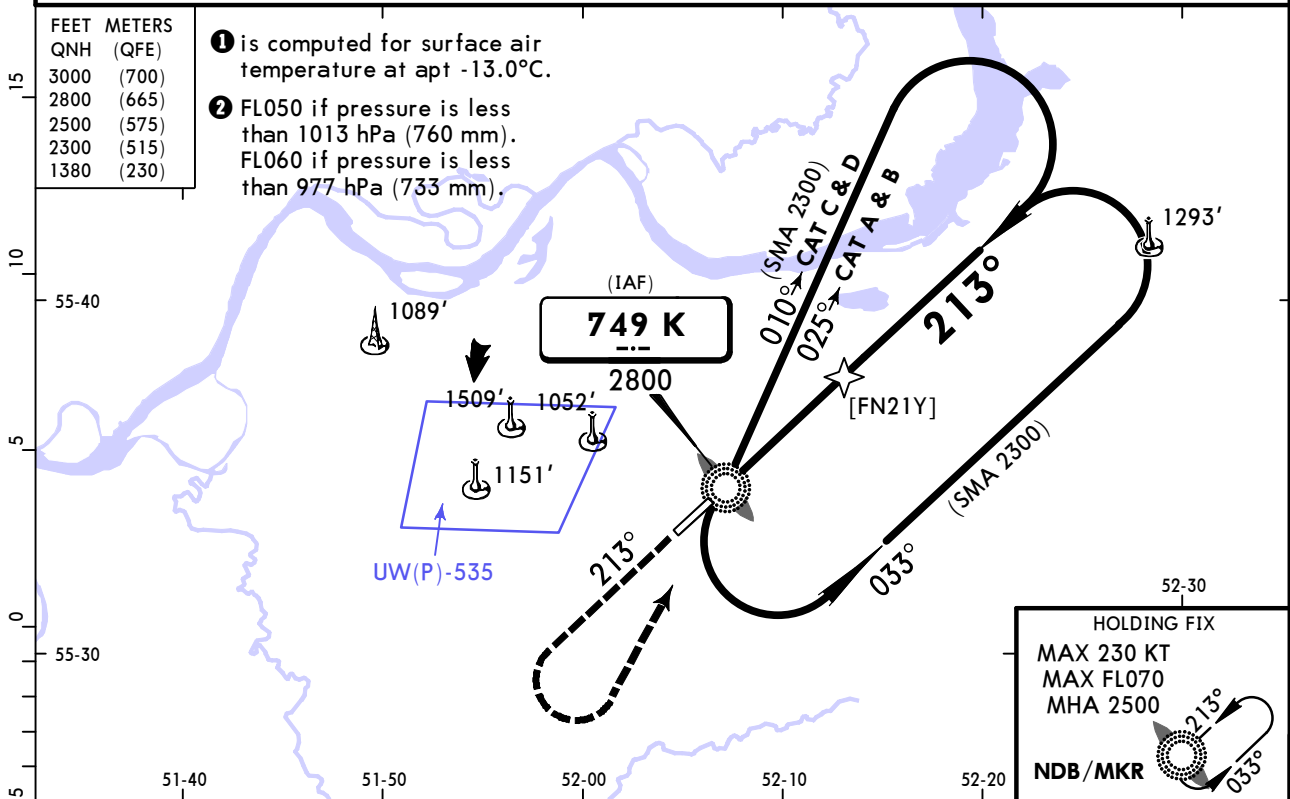
① VNAV DA(H) in lieu of MDA(H) depends on operator policy.

UWKE/NBC
BEGISHEVO

JEPPESEN
5 DEC 25 **(16-4)**

NIZHNEKAMSK, RUSSIA
NDB Y Rwy 21

ATIS 134.2		BEGISHEVO Tower (R) 127.9		BEGISHEVO Start (TWR) 121.2	
NDB K 749	Final Apch Crs 213°	[FN21Y] 2300' (1677')	DA/MDA(H) 1380' (757')	Apt Elev 643' Rwy 623'	2800 MSA ARP ①
MISSED APCH: Climb STRAIGHT AHEAD to 2300', then turn LEFT to K NDB/MKR climbing to 2800' or above, then join holding or according to chart.					
Alt Set: hPa (MM on req)		Rwy Elev: 23 hPa	Trans level: FL040 ②	Trans alt: 3000'	



Gnd speed-Kts	70	90	100	120	140	160	HIALS PAPI	2300'	K 749	MIN 2800'
Descent angle	3.00°	372	478	531	637	849				
MAP at NDB/MKR										

PANS OPS	Std STRAIGHT-IN LANDING						② CIRCLE-TO-LAND Prohibited in sector inbound 228°-018° clockwise			
	CDFA						Max KT			
	DA/MDA(H) 1380' (757')						MDA(H)			
	ALS out									
	A	R1500m						100	1380'	(757')
B	R1500m						135	1380'	(757')	V1600m
C	R2400m						180	1380'	(757')	V2400m
D	R2400m						205	1380'	(757')	V3600m

① VNAV DA(H) in lieu of MDA(H) depends on operator policy.
② Circling heights based on rwy 21 thresh elev of 623'.
CHANGES: K NDB/MKR established.
© JEPPESEN, 2023, 2025. ALL RIGHTS RESERVED.

Chart changes since cycle 07-2026

ADD = added chart, REV = revised chart, DEL = deleted chart.

ACT	PROCEDURE IDENT	INDEX	REV DATE	EFF DATE
-----	-----------------	-------	----------	----------

NIZHNEKAMSK, (BEGISHEVO - UWKE)

TERMINAL CHART CHANGE NOTICES

No Chart Change Notices for Airport UWKE