

List of pages in this Trip Kit

Trip Kit Index

Airport Information For TLPL

Terminal Charts For TLPL

Revision Letter For Cycle 22-2020

Change Notices

Notebook

General Information

Location: VIEUXFORT LCA
ICAO/IATA: TLPL / UVF
Lat/Long: N13° 44.0', W060° 57.2'
Elevation: 14 ft

Airport Use: Public
Daylight Savings: Not Observed
UTC Conversion: +4:00 = UTC
Magnetic Variation: 15.0° W

Fuel Types: Jet A-1
Customs: Yes
Airport Type: IFR
Landing Fee: No
Control Tower: Yes
Jet Start Unit: No
LLWS Alert: No
Beacon: Yes

Sunrise: 1006 Z
Sunset: 2133 Z

Runway Information

Runway: 28
Length x Width: 9003 ft x 150 ft
Surface Type: asphalt
TDZ-Elev: 10 ft
Lighting: Edge
Displaced Threshold: 499 ft
Stopway: 200 ft

Runway: 10
Length x Width: 9003 ft x 150 ft
Surface Type: asphalt
TDZ-Elev: 10 ft
Lighting: Edge, ALS

Communication Information

ATIS: 126.150
Hewanorra Tower: 118.300
Hewanorra Ground: 121.600
St Lucia Approach: 119.800

TLPL/UVF

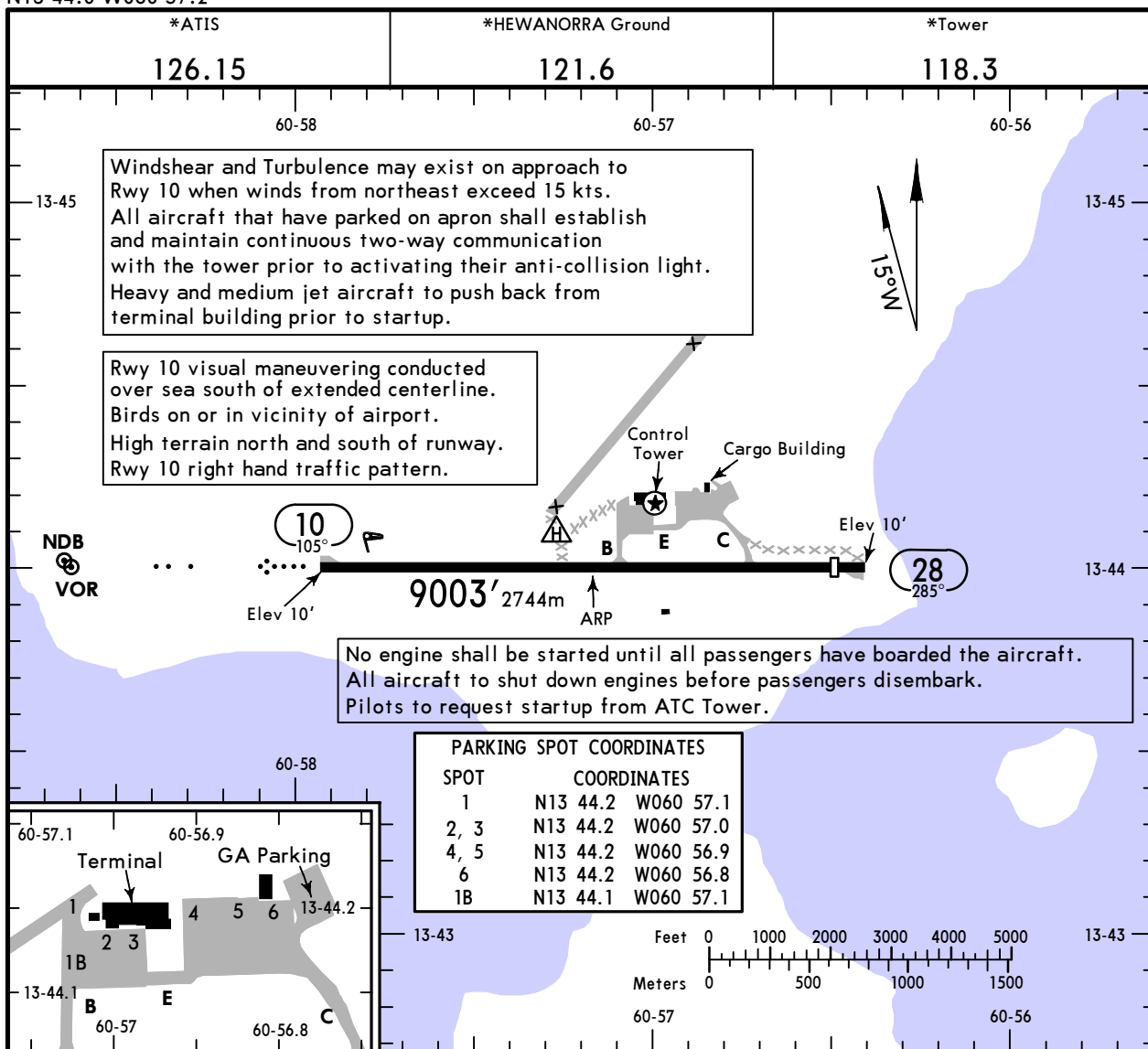
Apt Elev 14'
N13 44.0 W060 57.2



26 JUN 20 (10-9)

VIEUX FORT, ST LUCIA

HEWANORRA INTL



ADDITIONAL RUNWAY INFORMATION

RWY				① grooved	USABLE LENGTHS		TAKE-OFF	WIDTH
	HIRL	ALS	PAPI-L (3.00°)		Threshold	Glide Slope		
10	HIRL	ALS	PAPI-L (3.00°)	① grooved	②		8839' 2694m	150'
28	HIRL		PAPI-L (3.00°)	③ grooved	8504' 2592m			46m

- ① Runway grooved from first 420' (128m) to 8583' (2616m) of Rwy 10. Width of 128' (39m).
- ② LDA 8839' 2694m
- ③ Runway grooved from first 312' (95m) to 8691' (2649m) of Rwy 28. Width of 128' (39m).

Std TAKE-OFF

RL & RCLM	RL	RL or RCLM	Adequate Vis Ref	
DAY	NIGHT	DAY	DAY	NIGHT
R300m		R400m	R/V500m	NA

DEPARTURE PROCEDURE: For aircraft making a left turn after take-off Rwy 10: Climb on rwy heading until reaching 4200' then left turn; or, for aircraft making a right turn after take-off Rwy 10: climb on runway heading until reaching 2000' then right turn.

TLPL/UVF



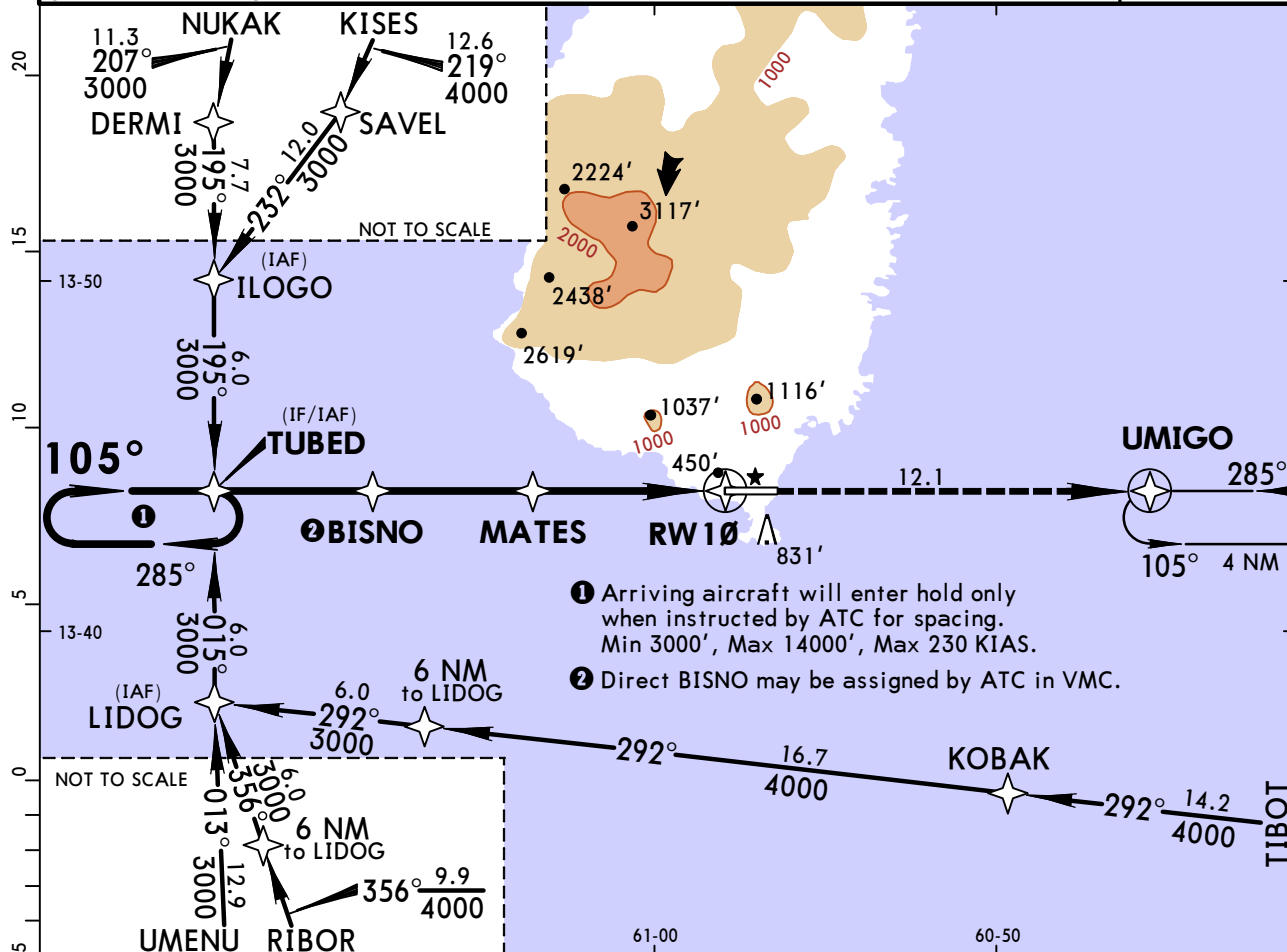
VIEUX FORT, ST LUCIA

HEWANORRA INTL

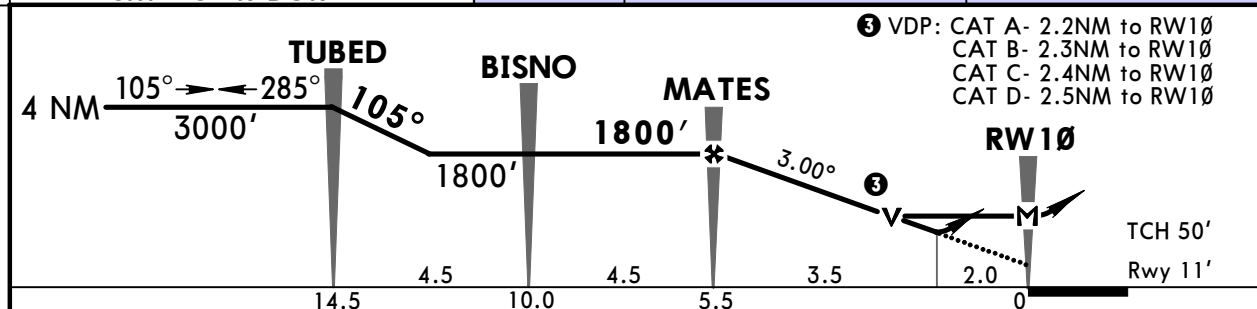
26 JUN 20 (12-1)

RNAV (GNSS) Rwy 10

*ATIS 126.15		*ST LUCIA Approach 119.8		*HEWANORRA Tower 118.3		*Ground 121.6		
RNAV	Final Apch Crs 105°	MATES 1800' (1789')	LNAV/VNAV DA(H) 690' (679')	Apt Elev 14' Rwy 11'		5200' MSA ARP		
MISSED APCH: Climb to 2500' direct UMIGO and hold, or as directed by ATC.								
Alt Set: hPa (IN on req) Rwy Elev: 0 hPa Trans level: By ATC Trans alt: 9000'								
1. Unless ATC clearance is obtained for an RNAV (GNSS) procedure, the navigation and position reporting of all aircraft shall be conducted with reference to conventional ground-based navigation aids.								



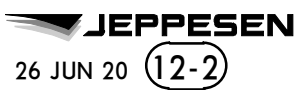
- 1 Arriving aircraft will enter hold only when instructed by ATC for spacing. Min 3000', Max 14000', Max 230 KIAS.
- 2 Direct BISNO may be assigned by ATC in VMC.



Gnd speed-Kts	70	90	100	120	140	160	ALS PAPI 2500' D → UMIGO
Descent Angle 3.00°	372	478	531	637	743	849	
LNAV/VNAV: MAP at DA							
LNAV: MAP at RW10							

PANS OPS	STRAIGHT-IN LANDING		CIRCLE-TO-LAND	
	LNAV/VNAV DA(H) 690'(679')	LNAV CDFA DA/MDA(H) A: 770'(759') B: 800'(789') C: 820'(809') D: 850'(839')	Not Authorized North of Rwy 10/28	
	ALS out	ALS out	Max Kts	MDA(H)
A	R1500m	R1500m	100	1130'(1116') V1500m
B	R1500m	R1500m	135	1130'(1116') V1600m
C	R2400m	R2400m	180	1230'(1216') V2400m
D	R2400m	R2400m	205	1230'(1216') V2400m

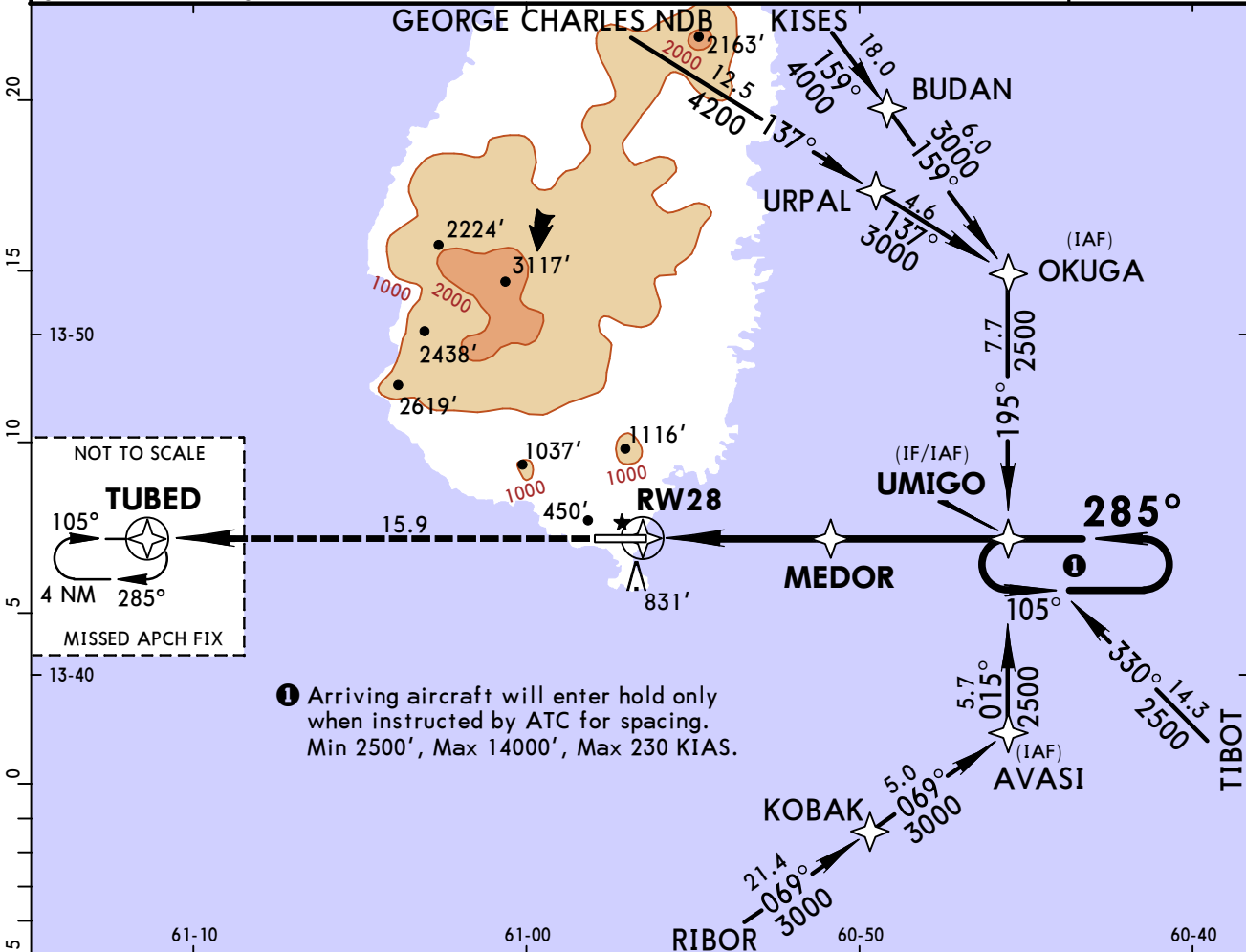
TLPL/UVF
HEWANORRA INTL



VIEUX FORT, ST LUCIA
RNAV (GNSS) Rwy 28

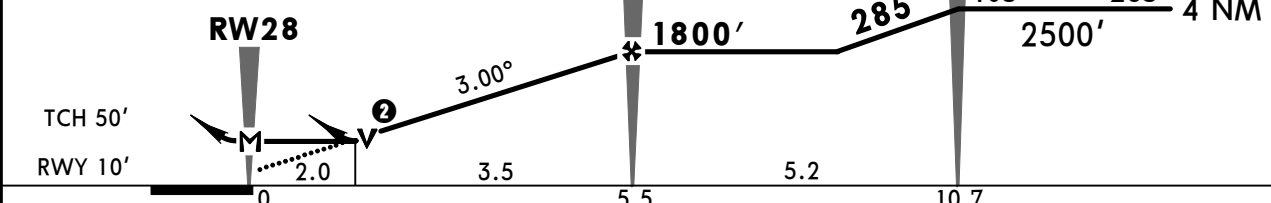
26 JUN 20 (12-2)

*ATIS 126.15		*ST LUCIA Approach 119.8		*HEWANORRA Tower 118.3		*Ground 121.6	
RNAV	Final Apch Crs 285°	MEDOR 1800' (1790')		LNAV/VNAV DA(H) 700' (690')		Apt Elev 14' Rwy 10'	
MISSED APCH: Climb to 3000' direct TUBED and hold, or as directed by ATC.							5200'
Alt Set: hPa (IN on req) Rwy Elev: 0 hPa Trans level: by ATC Trans alt: 9000'							
1. Unless ATC clearance is obtained for an RNAV (GNSS) procedure, the navigation and position reporting of all aircraft shall be conducted with reference to conventional ground-based navigation aids.							
							MSA ARP



① Arriving aircraft will enter hold only when instructed by ATC for spacing.
 Min 2500', Max 14000', Max 230 KIAS.

② VDP: CAT A- 2.2NM to RW28
 CAT B- 2.3NM to RW28
 CAT C- 2.4NM to RW28
 CAT D- 2.5NM to RW28



Gnd speed-Kts	70	90	100	120	140	160	PAPI-L	3000'	D → TUBED
Descent Angle 3.00°	372	478	531	637	743	849			
LNAV:VNAV: MAP at DA									
LNAV: MAP at RW28									

Std	STRAIGHT-IN LANDING		Max Kts	CIRCLE-TO-LAND Not Authorized North of Rwy 10/28	
	LNAV/VNAV DA(H) 700'(690')	LNAV CDFA ① DA/MDA(H) A,B,C: 700'(690') D: 710'(700')		MDA(H)	
A			100	1130'(1116')	V1500m
B	R1500m	R1500m	135	1130'(1116')	V1600m
C	R2400m	R2400m	180	1230'(1216')	V2400m
D			205	1230'(1216')	V3600m

① VNAV DA(H) in lieu of MDA(H) depends on operator policy.

TLPL/UVF

JEPPESEN

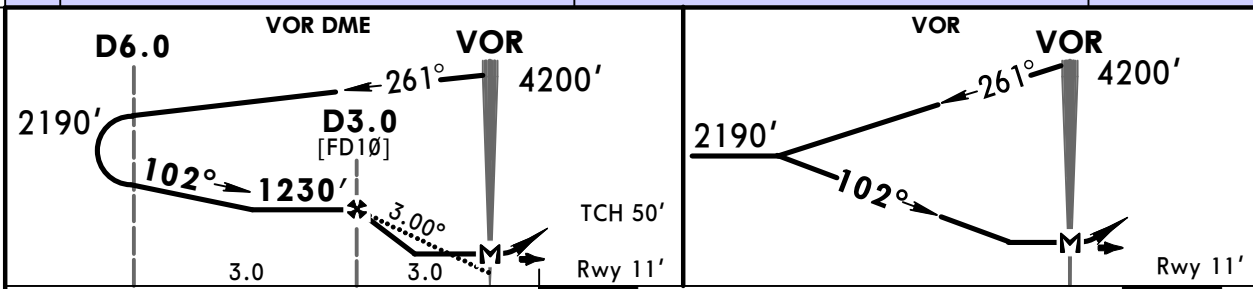
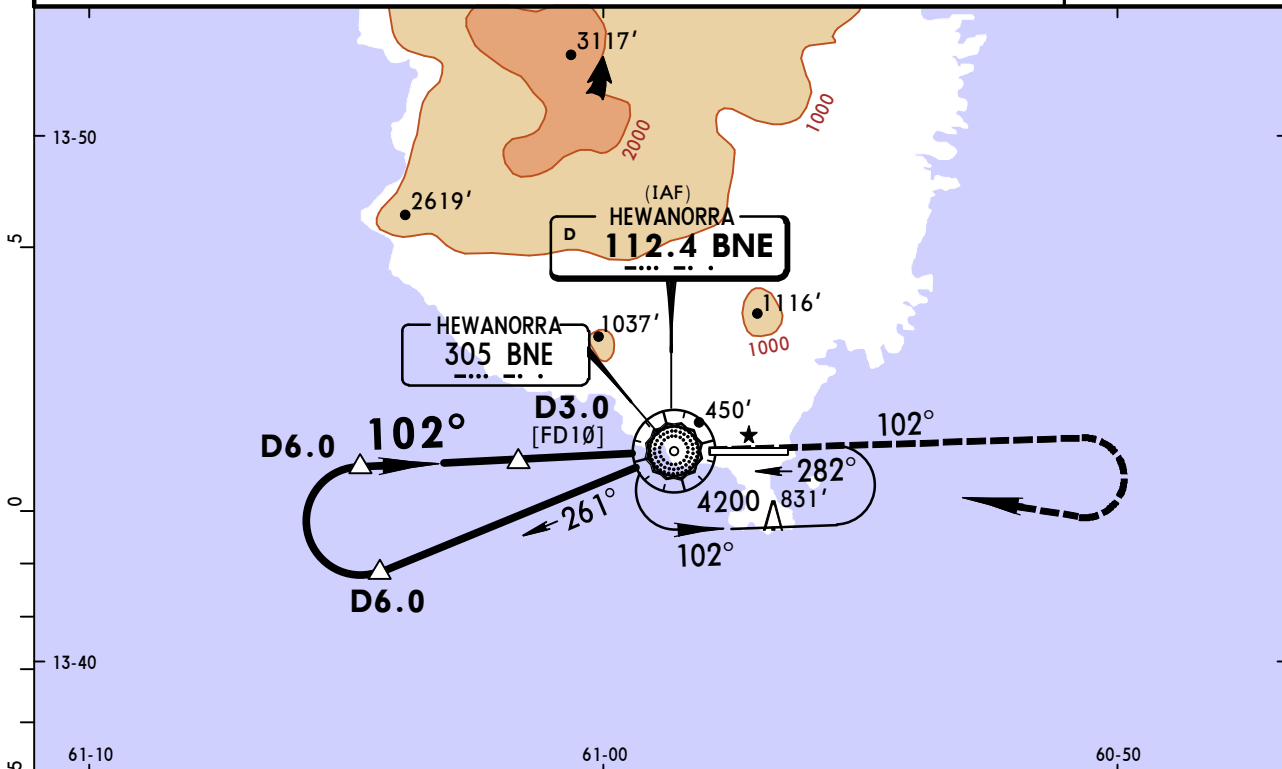
VIEUX FORT, ST LUCIA

HEWANORRA INTL

26 JUN 20 (13-1)

VOR DME Rwy 10
VOR Rwy 10

*ATIS 126.15		*ST LUCIA Approach 119.8		*HEWANORRA Tower 118.3		*Ground 121.6	
BRIEFING STRIP™ VOR BNE 112.4	Final Apch Crs 102°	VOR DME D3.0 1230' (1219')	VOR DME MDA(H) 730' (719')	Apt Elev 14' Rwy 11'			
		VOR No FAF	VOR MDA(H) 790' (779')				
<p>MISSED APCH: Climb outbound on BNE VOR R-102 to 4200', RIGHT turn to BNE VOR and hold, or as directed by ATC .</p> <p>Alt Set: hPa (IN on req) Rwy Elev: 0 hPa Trans level: By ATC Trans alt: 9000'</p> <p>1. CAUTION: Aircraft not to descend below 5200' when approaching from southwest until within 15 NM from BNE VOR. 2. CAUTION: High terrain north and south of airport. 3. Windshear and turbulence on final approach Rwy 10 when wind from northeast is 15 kts or greater.</p>							



Gnd Speed-Kts	70	90	100	120	140	160	ALS PAPI 4200' on BNE 112.4 R-102 RT BNE 112.4
Descent angle	3.00°	372	478	531	637	743	
MAP at VOR							

PANS OPS	State STRAIGHT-IN LANDING				CIRCLE-TO-LAND Not Authorized North of Rwy 10/28		
	VOR DME MDA(H) 730' (719')		VOR MDA(H) 790' (779')		Max Kts		
	ALS out		ALS out		MDA(H)		
	A	V1200m	V3300m	V1200m	V3600m	100	1130' (1116') R/V2000m
	B	V2000m		V2000m	V3600m	135	1130' (1116') R/V2400m
C	V3600m		V3600m		180	1230' (1216') R/V4800m	
D	V4000m		V4000m		205		

TLPL/UVF

JEPPESEN

VIEUX FORT, ST LUCIA

HEWANORRA INTL

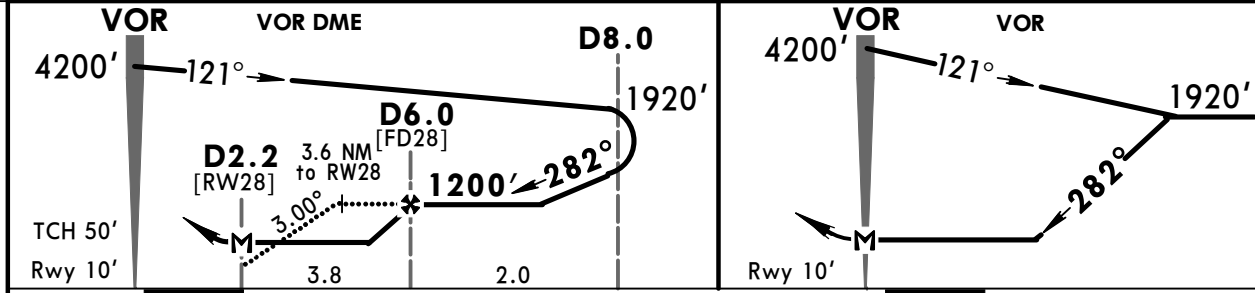
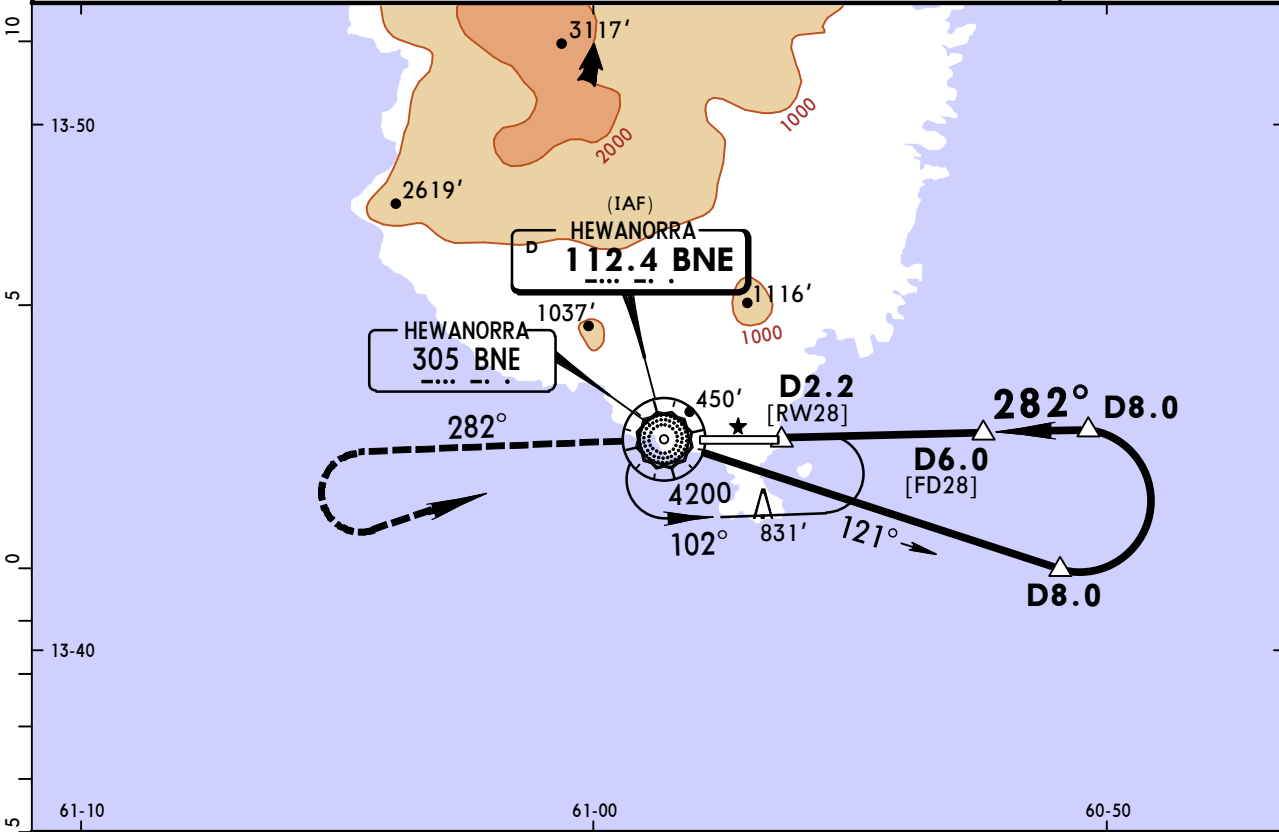
26 JUN 20

13-2

VOR DME Rwy 28

VOR Rwy 28

*ATIS 126.15		*ST LUCIA Approach 119.8		*HEWANORRA Tower 118.3		*Ground 121.6	
BRIEFING STRIP™	VOR BNE 112.4	Final Apch Crs 282°	VOR DME D6.0 1200' (1190')	MDA(H) 770' (760')	Apt Elev 14' Rwy 10'		<p>MSA BNE NDB</p>
	<p>MISSED APCH: Climb outbound on BNE VOR R-282 to 4200', LEFT turn to BNE VOR and hold, or as directed by ATC.</p> <p>Alt Set: hPa (IN on req) Rwy Elev: 0 hPa Trans level: By ATC Trans alt: 9000'</p> <p>1. CAUTION: Aircraft not to descend below 5200' when approaching from southwest until within 15 NM from BNE VOR. 2. CAUTION: High terrain north and south of airport. 3. Windshear and turbulence on final approach Rwy 10 when wind from northeast is 15 kts or greater.</p>						



Gnd Speed-Kts	70	90	100	120	140	160	PAPI-L	4200'	BNE on 112.4 R-282	LT	BNE 112.4
Descent angle	3.00°	372	478	531	637	849					
VOR DME: MAP at D2.2											
VOR: MAP at VOR											

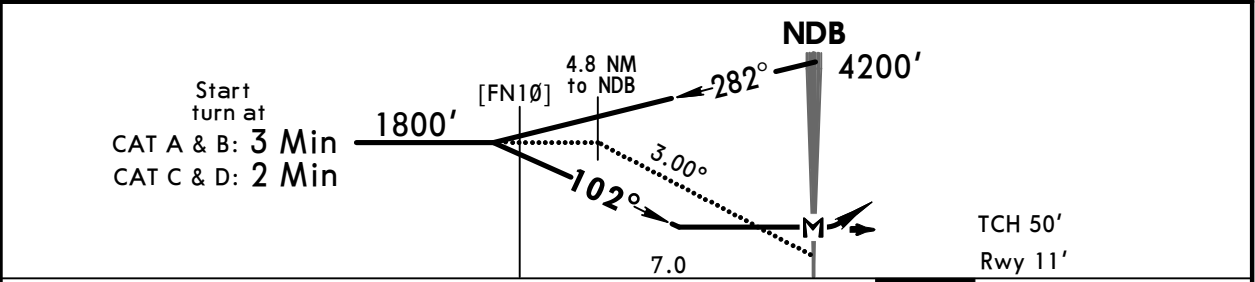
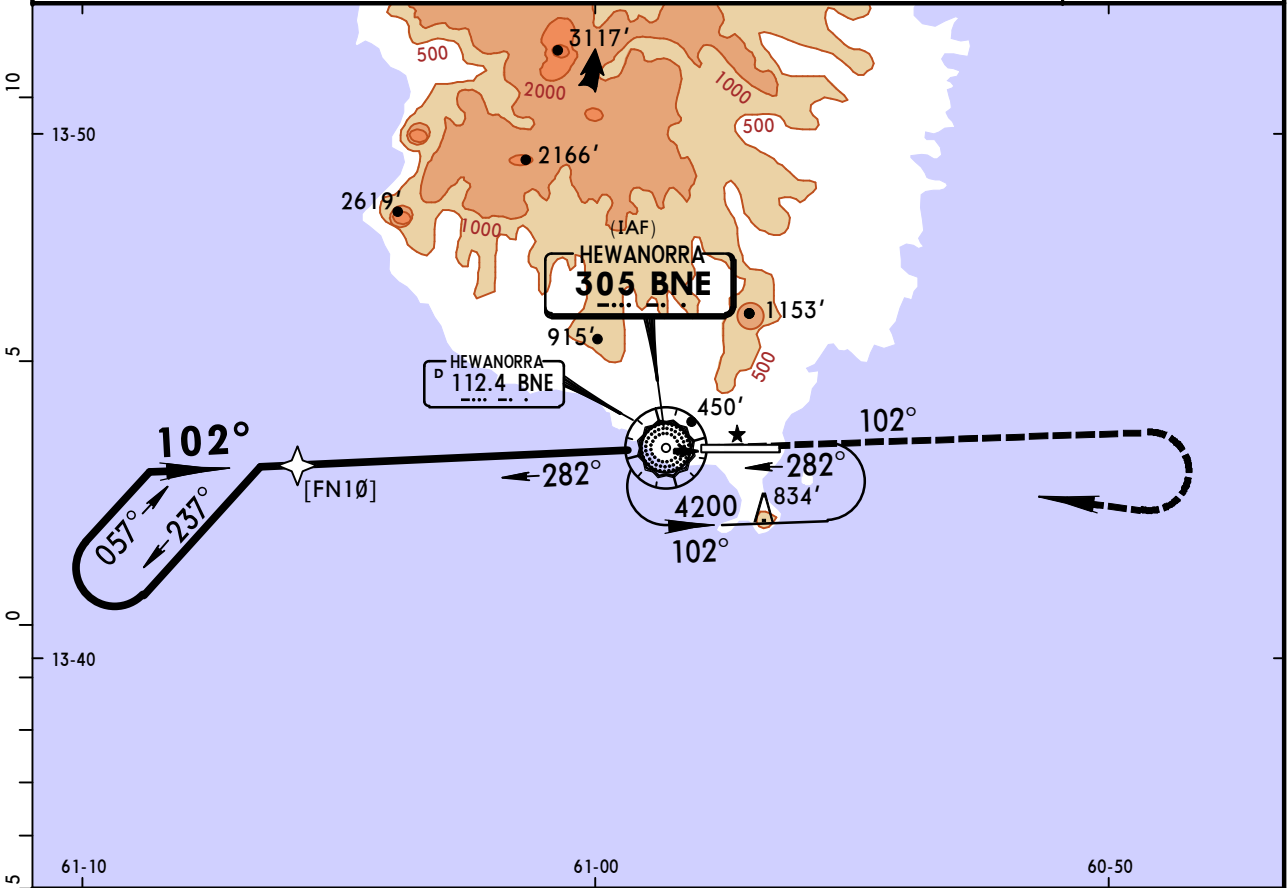
PANS OPS	State STRAIGHT-IN LANDING		CIRCLE-TO-LAND	
	MDA(H) 770' (760')		Not Authorized North of Rwy 10/28	
	VOR DME	VOR	Max Kts	MDA(H)
	A	V1200m	100	1130' (1116') R/V2000m
	B	V2000m	135	1130' (1116') R/V2400m
C	V3600m	180	1230' (1216') R/V4800m	
D	V4000m	205		

TLPL/UVF
HEWANORRA INTL

JEPPESEN
26 JUN 20 **(16-1)**

VIEUX FORT, ST LUCIA
NDB Rwy 10

*ATIS 126.15		*ST LUCIA Approach 119.8		*HEWANORRA Tower 118.3		*Ground 121.6	
NDB BNE 305	Final Apch Crs 102°	No FAF		MDA(H) 790' (779')	Apt Elev 14' Rwy 11'		<p>MSA BNE NDB</p>
MISSED APCH: Climb on bearing 102° from BNE NDB to 4200', RIGHT turn, return to BNE NDB and hold, or as directed by ATC.							
Alt Set: hPa (IN on req) Rwy Elev: 0 hPa Trans level: By ATC Trans alt: 9000' 1. CAUTION: Aircraft not to descend below 5200' when approaching from southwest until within 15 NM from BNE VOR. 2. CAUTION: High terrain north and south of airport. 3. Windshear and turbulence on final approach Rwy 10 when wind from northeast is 15 kts or greater.							



Gnd Speed-Kts	70	90	100	120	140	160	ALS PAPI	4200'	BNE 305 102°	RT	BNE 305
Descent angle	3.00°	372	478	531	637	743					

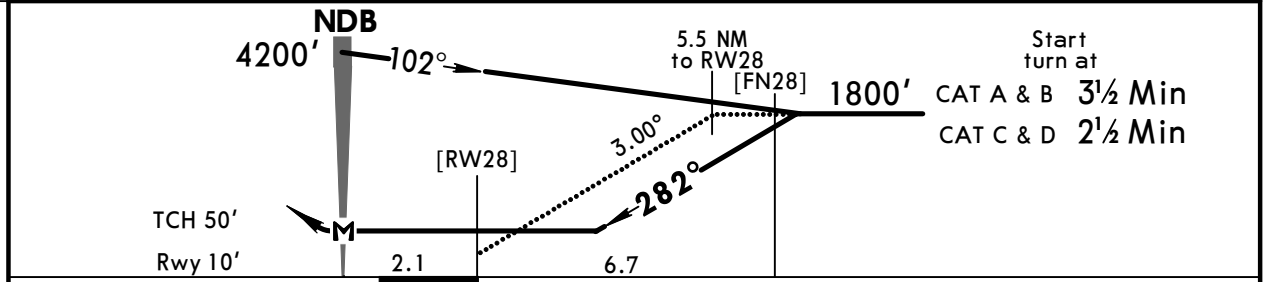
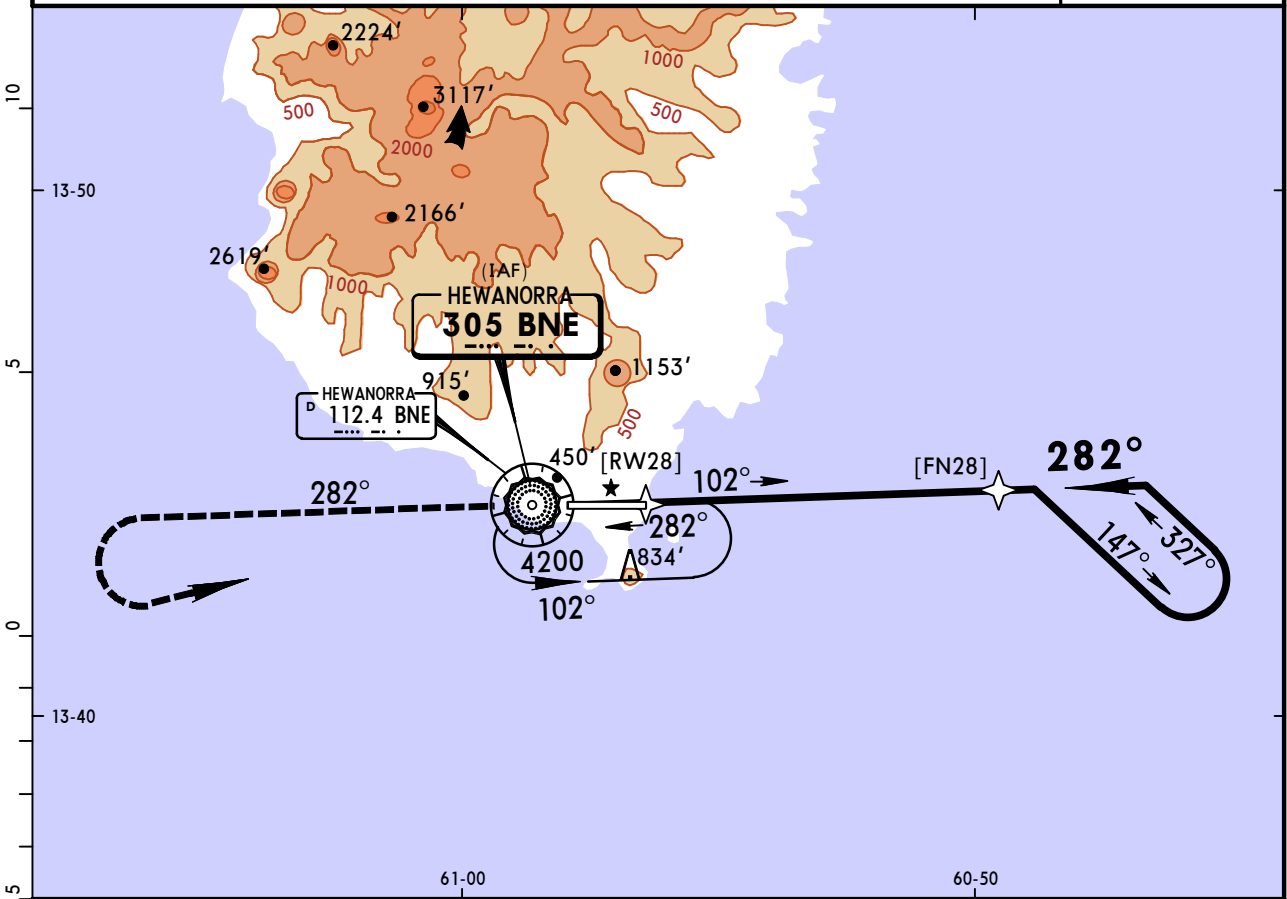
PANS OPS	State		STRAIGHT-IN LANDING		CIRCLE-TO-LAND	
			MDA(H) 790' (779')		Not Authorized North of Rwy 10/28	
			ALS out		Max Kts	MDA(H)
	A	V1200m	V1600m	100	1130' (1116')	R/V2000m
	B	V2000m	V3600m	135	1130' (1116')	R/V2400m
C	V3600m		180	1230' (1216') R/V4800m		
D	V4000m		205			

TLPL/UVF
HEWANORRA INTL

JEPPESEN
26 JUN 20 **(16-2)**

VIEUX FORT, ST LUCIA
NDB Rwy 28

*ATIS 126.15		*ST LUCIA Approach 119.8		*HEWANORRA Tower 118.3		*Ground 121.6	
NDB BNE 305	Final Apch Crs 282°	No FAF		MDA(H) 890' (880')	Apt Elev 14' Rwy 10'		<p>MSA BNE NDB</p>
<p>MISSED APCH: Climb on bearing 282° from BNE NDB to 4200', then LEFT turn, return to BNE NDB and hold, or as directed by ATC.</p> <p>Alt Set: hPa (IN on req) Rwy Elev: 0 hPa Trans level: By ATC Trans alt: 9000'</p> <p>1. CAUTION: Aircraft not to descend below 5200' when approaching from southwest until within 15 NM from BNE VOR. 2. CAUTION: High terrain north and south of airport. 3. Windshear and turbulence on final approach Rwy 10 when wind from northeast is 15 kts or greater.</p>							



Gnd speed-Kts	70	90	100	120	140	160	PAPI-L	4200'	BNE 305 282°	LT	BNE 305
Descent angle 3.00°	372	478	531	637	743	849					
MAP at NDB											

PANS OPS	State		STRAIGHT-IN LANDING		CIRCLE-TO-LAND	
			MDA(H) 890' (880')		Not Authorized North of Rwy 10/28.	
			Max Kts	MDA(H)		
	A	V2000m	100	1130' (1116')	R/V2000m	
	B	V2000m	135	1130' (1116')	R/V2400m	
C	V4400m	180		1230' (1216')		
D	V4800m	205		R/V4800m		

Chart changes since cycle 21-2020

ADD = added chart, REV = revised chart, DEL = deleted chart.

ACT	PROCEDURE IDENT	INDEX	REV DATE	EFF DATE
-----	-----------------	-------	----------	----------

VIEUXFORT, (HEWANORRA INTL - TLPL)

TERMINAL CHART CHANGE NOTICES

No Chart Change Notices for Airport TLPL