

List of pages in this Trip Kit

Trip Kit Index

Airport Information For OEDR

Terminal Charts For OEDR

Revision Letter For Cycle 21-2020

Change Notices

Notebook

General Information

Location: DHAHRAN SAU
ICAO/IATA: OEDR / DHA
Lat/Long: N26° 15.8', E050° 09.1'
Elevation: 84 ft

Airport Use: Military
Daylight Savings: Not Observed
UTC Conversion: -3:00 = UTC
Magnetic Variation: 2.0° E

Fuel Types: Jet A-1, Jet 4
Customs: Yes
Airport Type: IFR
Landing Fee: No
Control Tower: Yes
Jet Start Unit: No
LLWS Alert: No
Beacon: Yes

Sunrise: 0239 Z
Sunset: 1411 Z

Runway Information

Runway: 16L
Length x Width: 11811 ft x 148 ft
Surface Type: concrete
TDZ-Elev: 84 ft
Lighting: Edge, ALS, Centerline, TDZ

Runway: 16R
Length x Width: 12008 ft x 148 ft
Surface Type: concrete
TDZ-Elev: 68 ft
Lighting: Edge, ALS, Centerline

Runway: 34L
Length x Width: 12008 ft x 148 ft
Surface Type: concrete
TDZ-Elev: 64 ft
Lighting: Edge, ALS, Centerline

Runway: 34R
Length x Width: 11811 ft x 148 ft
Surface Type: concrete
TDZ-Elev: 59 ft
Lighting: Edge, ALS, Centerline, TDZ

Communication Information

ATIS: 117.200

Dhahran East Tower: 118.700

Dhahran West Tower: 118.400

Dhahran West Tower: 28.735 Military

Dhahran West Tower: 25.080 Secondary Military

Dhahran Ground: 36.300 Military

Dhahran Ground: 121.700 Military

Dhahran Approach: 31.895 Military

Dhahran Approach: 124.650

Dhahran Approach: 124.100 Secondary

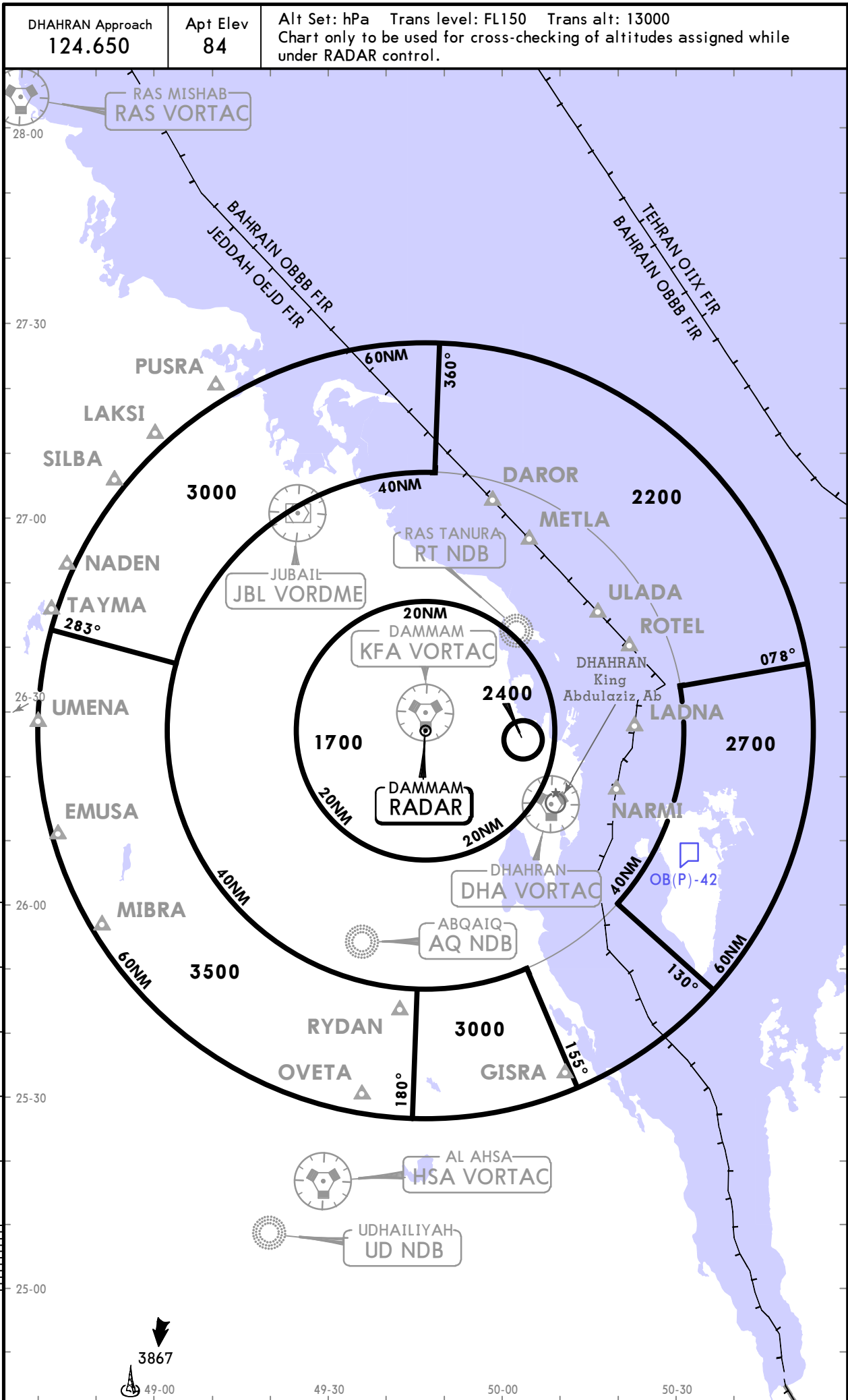
Dhahran Departure: 31.050 Military

OEDR/DHA KING ABDULAZIZ AB

16 AUG 19 **10-1R**

DHAHRAN, SAUDI ARABIA

RADAR MINIMUM ALTITUDES



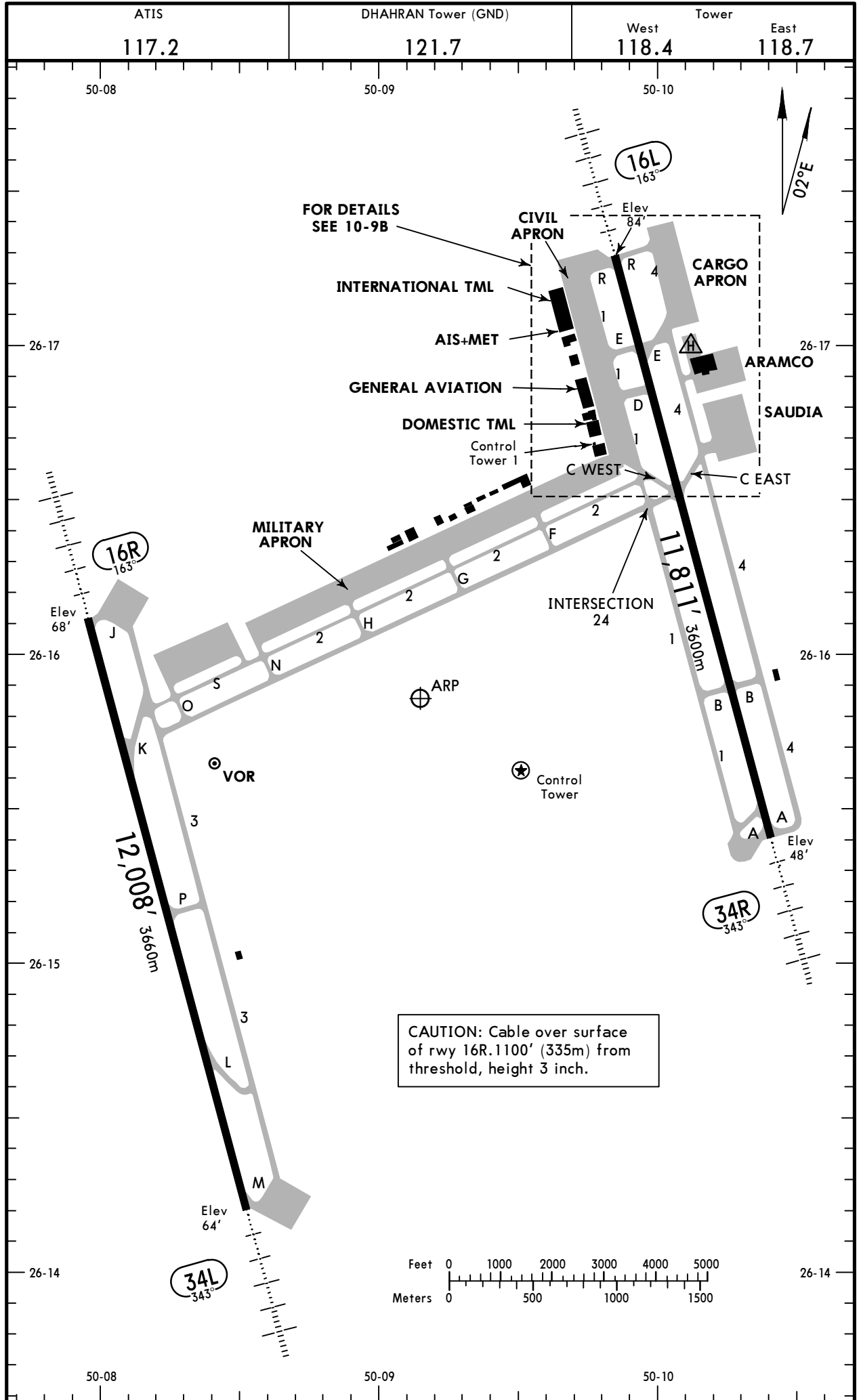
CHANGES: Standard distribution changed to limited.

OEDR/DHA

Apt Elev **84'**
N26 15.9 E050 09.1

JEPPesen DHAHRAN, SAUDI ARABIA

16 AUG 19 **10-9** KING ABDULAZIZ AB



CHANGES: None.

© JEPPESEN, 2000, 2015. ALL RIGHTS RESERVED.

OEDR/DHA

JEPPESEN DHAHRAN, SAUDI ARABIA
 16 AUG 19 **(10-9A)** KING ABDULAZIZ AB

GENERAL
 180° turns on asphalt rwys prohibited.

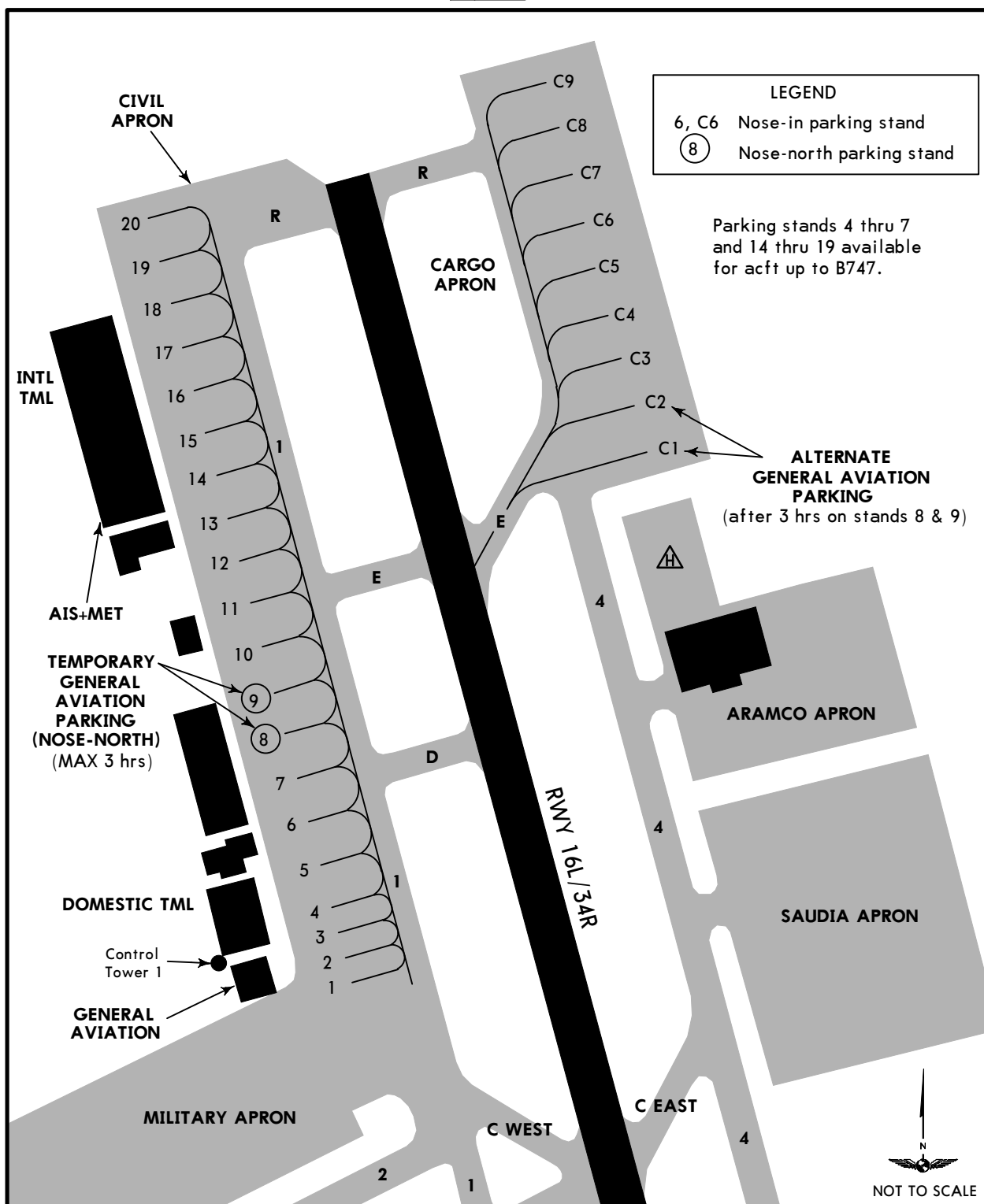
ADDITIONAL RUNWAY INFORMATION						
RWY			RVR	USABLE LENGTHS		WIDTH
				LANDING Threshold	BEYOND Glide Slope	
16L 34R	RL HIALS CL PAPI-R (angle 3.0°)		RVR		10,596' 3230m	148' 45m
					10,778' 3285m	
16R 34L	RL HIALS CL PAPI-R (angle 3.0°)		RVR		10,914' 3327m	148' 45m

TAKE-OFF & IFR DEPARTURE PROCEDURE						FOR FILING AS ALTERNATE	
	Rwy 16L/R	Rwy 34L		Rwy 34R		Precision	Non-Precision
	STD	With Mim climb of 300'/NM to 800'	Other	With Mim climb of 270'/NM to 800'	Other		
1 & 2 Eng	VIS 1600m	VIS 1600m	700'- VIS 1600m	VIS 1600m	700'- VIS 1600m	A B C D	600'- 800'- VIS 3200m VIS 3200m
3 & 4 Eng	VIS 800m	VIS 800m		VIS 800m			

IFR DEPARTURE PROCEDURE:
 Comply with SID or RADAR vectors, or climb on Rwy heading to 1500' before turning.

OEDR/DHA

JEPPESEN DHAHRAN, SAUDI ARABIA
 16 AUG 19 **(10-9B)** KING ABDULAZIZ AB



INS COORDINATES

STAND No.	COORDINATES	STAND No.	COORDINATES
CIVIL APRON		CARGO APRON	
1 thru 4	N26 16.7 E050 09.8	C1, C2	N26 17.1 E050 10.1
5 thru 7	N26 16.8 E050 09.8	C3, C4	N26 17.2 E050 10.1
8 thru 10	N26 16.9 E050 09.7	C5	N26 17.2 E050 10.0
11 thru 13	N26 17.0 E050 09.7	C6, C7	N26 17.3 E050 10.0
14 thru 16	N26 17.1 E050 09.7	C8, C9	N26 17.4 E050 10.0
17, 18	N26 17.2 E050 09.7		
19	N26 17.2 E050 09.6		
20	N26 17.3 E050 09.6		

OEDR/DHA


JEPPESSEN
 16 AUG 19 **10-9S**
Standard**DHAHRAN, SAUDI ARABIA**
KING ABDULAZIZ AB

STRAIGHT-IN RWY		A	B	C	D
16L	ILS DME	284' (200') 1200m	284' (200') 1200m	284' (200') 1200m	284' (200') 1200m
	LOC	620' (536') 1900m	620' (536') 1900m	620' (536') 2100m	620' (536') 2100m
	ALS out	2600m	2600m	2800m	2800m
16R	ILS DME	268' (200') 800m	268' (200') 800m	268' (200') 800m	268' (200') 800m
	ALS out	1200m	1200m	1200m	1200m
	① LOC	620' (552') 1500m	620' (552') 1500m	620' (552') 1800m	620' (552') 2000m
	ALS out	1600m	1600m	2400m	2800m
	LOC	620' (552') 2000m	620' (552') 2000m	620' (552') 2200m	620' (552') 2200m
	ALS out	2700m	2700m	2900m	2900m
	① VOR DME	760' (692') 2500m	760' (692') 2500m	760' (692') 2500m	760' (692') 2800m
	ALS out	3200m	3200m	3200m	3600m
	VOR DME	760' (692') 2700m	760' (692') 2700m	760' (692') 2900m	760' (692') 2900m
	ALS out	3400m	3400m	3600m	3600m
34L	ILS DME	264' (200') 800m	264' (200') 800m	264' (200') 800m	264' (200') 800m
	ALS out	1200m	1200m	1200m	1200m
	① LOC	380' (316') 800m	380' (316') 800m	380' (316') 800m	380' (316') 1200m
	ALS out	1600m	1600m	1600m	1600m
	LOC	380' (316') 1000m	380' (316') 1000m	380' (316') 1200m	380' (316') 1200m
	ALS out	1600m	1600m	1800m	1800m
	① VOR DME	380' (316') 1000m	380' (316') 1000m	380' (316') 1200m	380' (316') 1600m
	ALS out	1600m	1600m	1600m	1600m
	VOR DME	380' (316') 1000m	380' (316') 1000m	380' (316') 1200m	380' (316') 1600m
	ALS out	1600m	1600m	1800m	1800m
34R	ILS DME	259' (200') 800m	259' (200') 800m	259' (200') 800m	259' (200') 800m
	ALS out	1200m	1200m	1200m	1200m
	LOC	420' (361') 1200m	420' (361') 1200m	420' (361') 1400m	420' (361') 1400m
	ALS out	1900m	1900m	2100m	2100m

① Continuous Descent Final Approach.

OEDR/DHA



Standard

DHAHRAN, SAUDI ARABIA
KING ABDULAZIZ AB

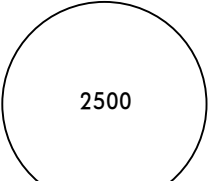
CIRCLE-TO-LAND	A	B	C	D
	NOT AUTHORIZED	NOT AUTHORIZED	NOT AUTHORIZED	NOT AUTHORIZED

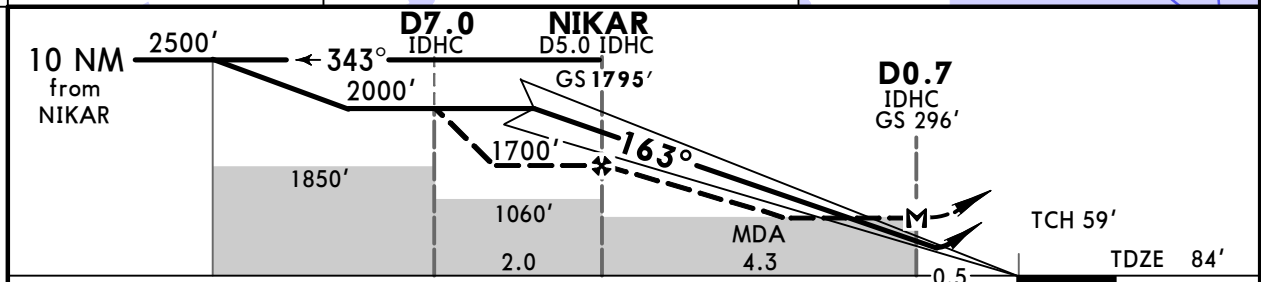
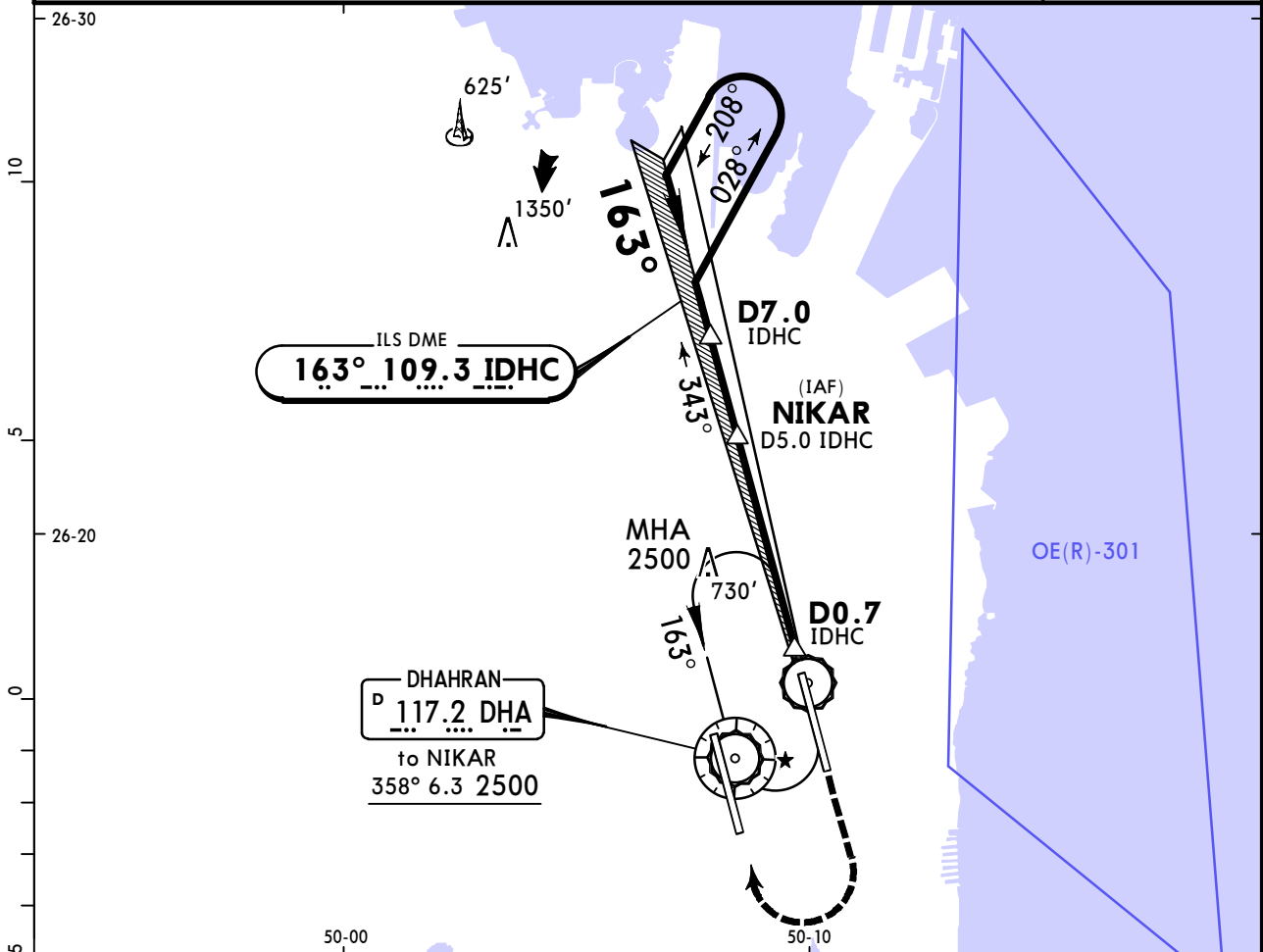
TAKE-OFF



	Rwy 16L/R	Rwy 34L		Rwy 34R	
	STD	With Min climb of 300'/NM to 800'	Other	With Min climb of 270'/NM to 800'	Other
		STD		STD	
1 & 2 Eng	VIS1600m	VIS1600m	700'- VIS 1600m	VIS1600m	700'- VIS 1600m
3 & 4 Eng	VIS 800m	VIS 800m		VIS 800m	

OEDR/DHA
KING ABDULAZIZ AB

JEPPESEN DHAHRAN, SAUDI ARABIA
16 AUG 19 **11-1**
ILS DME Rwy 16L

ATIS 117.2		DHAHRAN Arrival (Radar) 124.650		DHAHRAN Tower West 118.4 East 118.7		Ground 121.7
LOC IDHC 109.3	Final Apch Crs 163°	GS NIKAR 1795' (1711')	ILS DA(H) 284' (200')	Apt Elev 84'		
MISSED APCH: Climb to 1500', then climbing turn RIGHT to 2500' direct VOR and hold.						
Alt Set: hPa TDZ Elev: 3 hPa Trans level: FL 150 Trans alt: 13000' Procedure not authorized when OE(R)-41 or OE(D)-43 active and Radar not available.						



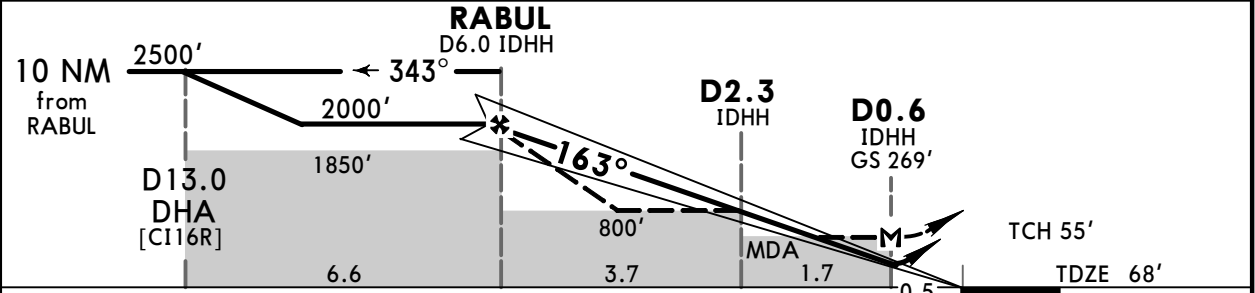
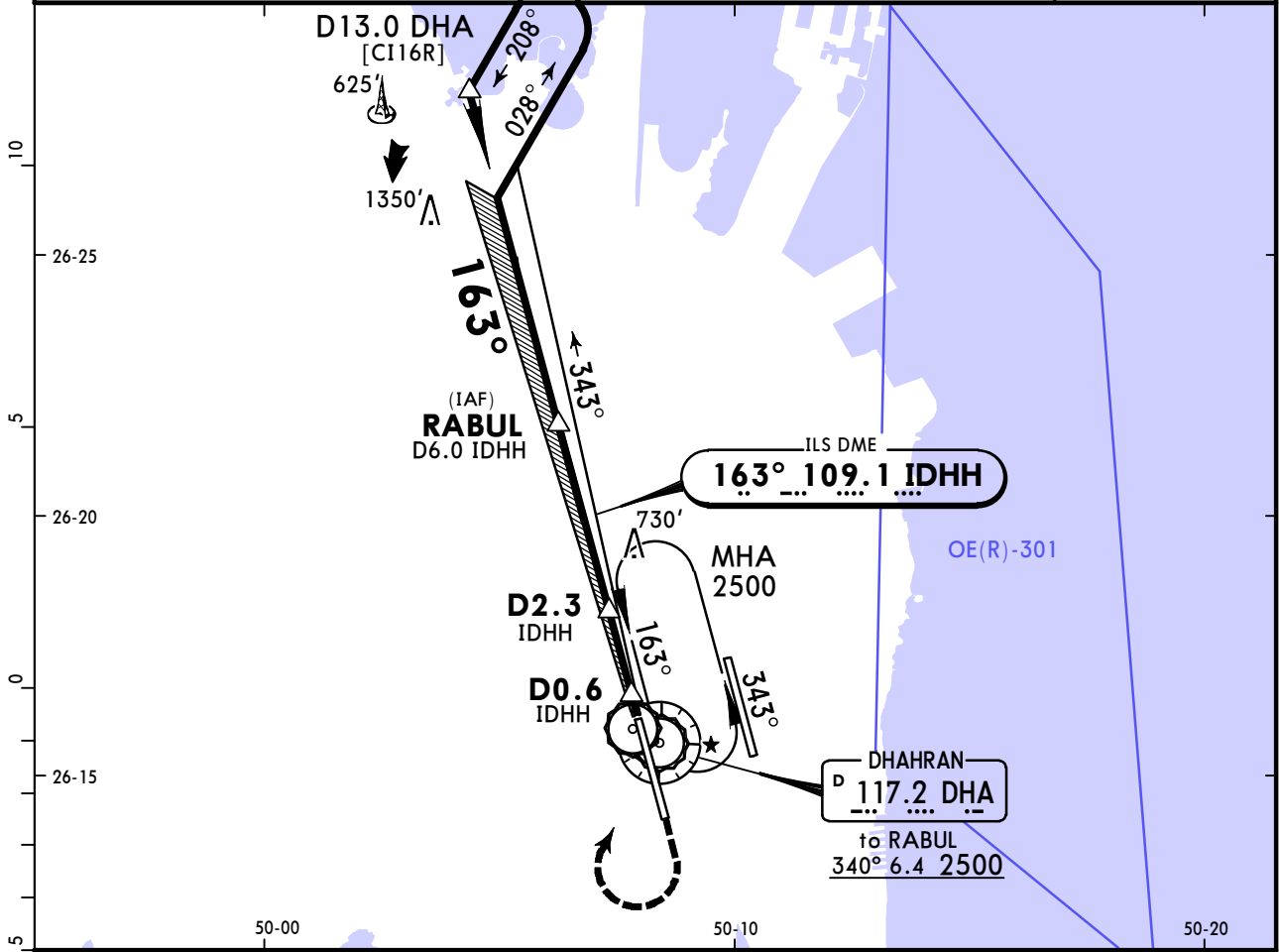
Gnd speed-Kts	70	90	100	120	140	160	HIALS PAPI 	1500'
GS	3.20°	396	510	566	679	793		
MAP at D0.7 IDHC								

STRAIGHT-IN LANDING RWY 16L				CIRCLE-TO-LAND			
ILS		LOC (GS out)		ILS		LOC (GS out)	
DA(H) 284' (200')		MDA(H) 620' (536')		DA(H) 284' (200')		MDA(H) 620' (536')	
FULL	ALS out	FULL	ALS out	FULL	ALS out	FULL	ALS out
A	1200m	A	1200m	A	NOT AUTHORIZED	A	1600m
B		B	1600m	B		2400m	
C		C	2000m	C		2800m	
D		D	2000m	D		2800m	

OEDR/DHA
KING ABDULAZIZ AB

JEPPESEN DHAHRAN, SAUDI ARABIA
16 AUG 19 **(11-2)** **ILS DME Rwy 16R**

ATIS 117.2		DHAHRAN Arrival (Radar) 124.650		DHAHRAN Tower West 118.4 East 118.7		Ground 121.7
LOC IDHH 109.1	Final Apch Crs 163°	GS RABUL 2000' (1932')	ILS DA(H) 268' (200')	Apt Elev 84'	TDZE 68'	<p>2500 MSA DHA VOR</p>
MISSED APCH: Climb to 1500', then climbing turn RIGHT to 2500' direct VOR and hold.						
Alt Set: hPa TDZ Elev: 2 hPa Trans level: FL 150 Trans alt: 13000' Procedure not authorized when OE(R)-41 or OE(D)-43 active and Radar not available.						



Gnd speed-Kts	70	90	100	120	140	160	<p>1500'</p>
GS	3.00°	372	478	531	637	849	
MAP at D0.6 IDHH							

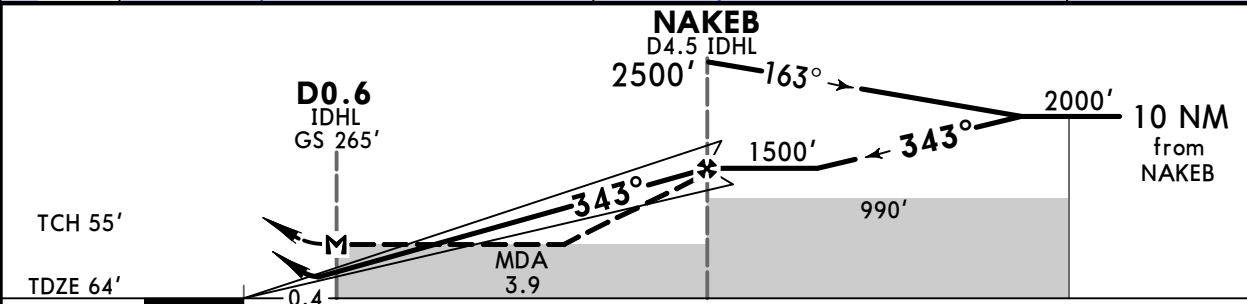
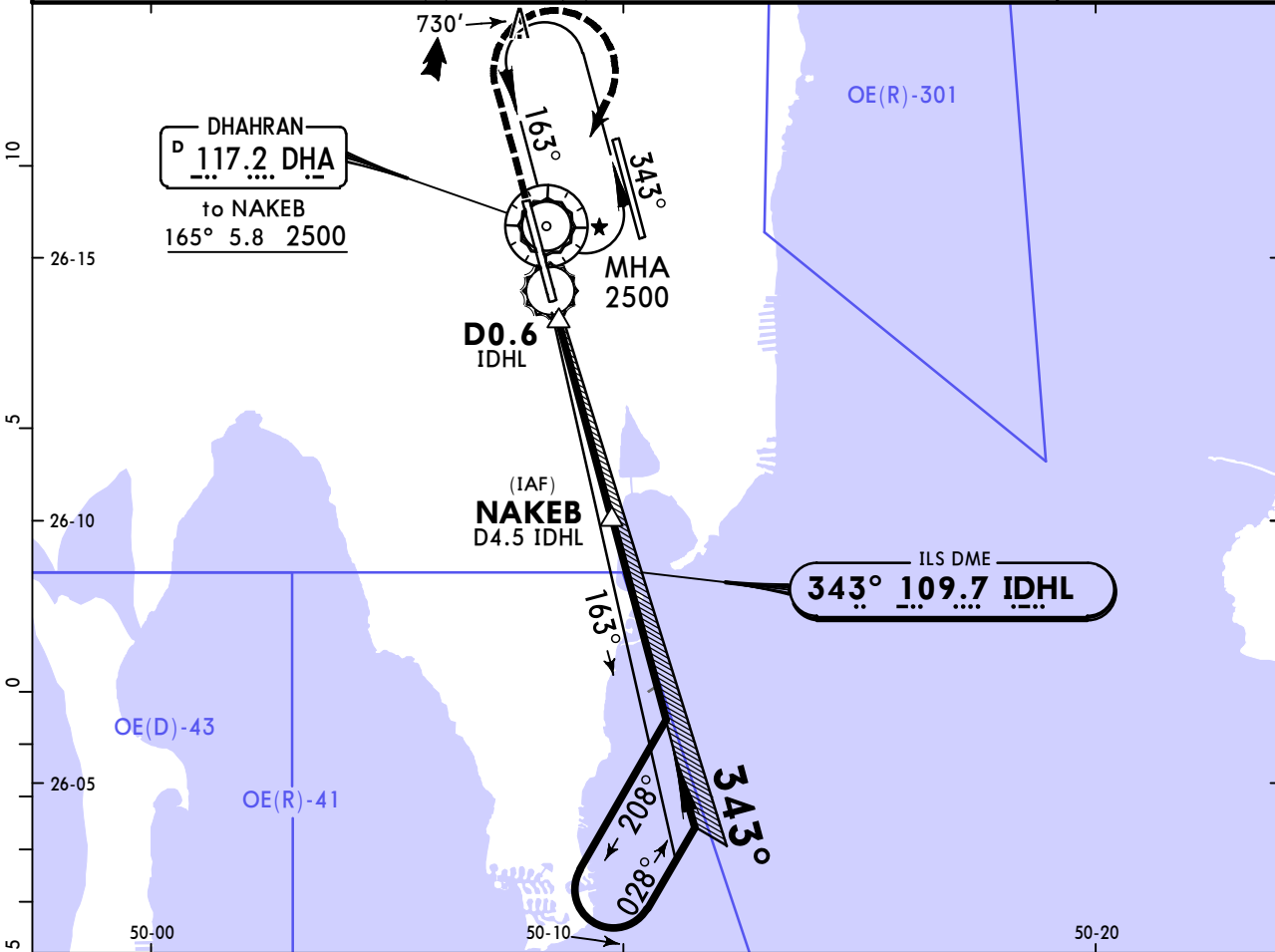
STRAIGHT-IN LANDING RWY 16R				CIRCLE-TO-LAND			
ILS DA(H) 268' (200')		LOC (GS out) MDA(H) 620' (552')					
FULL	ALS out	ALS out	ALS out				
A				NOT AUTHORIZED			
B		800m	1600m				
C	800m	1200m	1600m				
D		2000m	2800m				

OEDR/DHA
KING ABDULAZIZ AB

16 AUG 19 **11-3**

JEPPESSEN DHAHRAN, SAUDI ARABIA
ILS DME Rwy 34L

ATIS 117.2		DHAHRAN Arrival (Radar) 124.650		DHAHRAN Tower West 118.4 East 118.7		Ground 121.7
LOC IDHL 109.7	Final Apch Crs 343°	GS NAKEB 1500' (1436')	ILS DA(H) 264' (200')	Apt Elev 84' TDZE 64'		2500 MSA DHA VOR
MISSED APCH: Climb to 1500', then climbing turn RIGHT to 2500' direct VOR and hold.						
Alt Set: hPa TDZ Elev: 2 hPa Trans level: FL 150 Trans alt: 13000'						
Procedure not authorized when OE(R)-41 or OE(D)-43 active and Radar not available.						



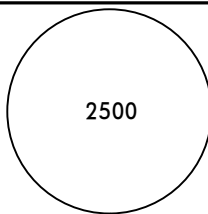
Gnd speed-Kts	70	90	100	120	140	160	HIALS PAPI 1500' ↑
GS	3.00°	372	478	531	637	743	
MAP at D0.6 IDHL							

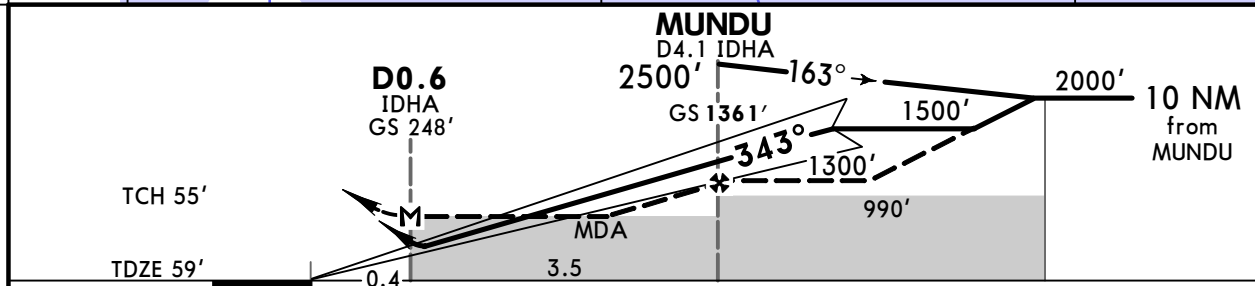
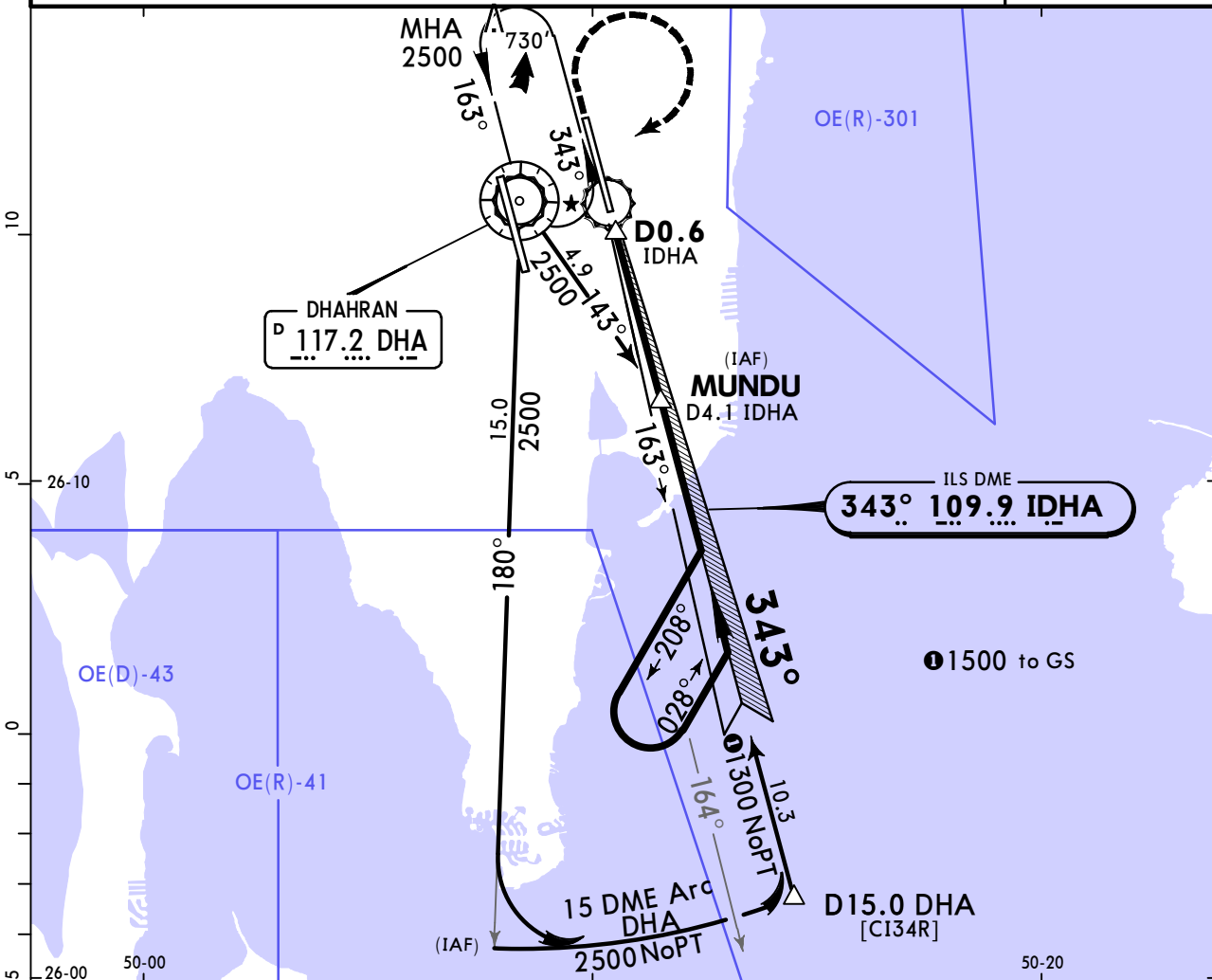
STRAIGHT-IN LANDING RWY 34L				CIRCLE-TO-LAND	
ILS DA(H) 264' (200')		LOC (GS out) MDA(H) 380' (316')			
FULL		ALS out		ALS out	
A				A	
B				B	
C	800m	1200m	800m	C	NOT AUTHORIZED
D			1200m	D	

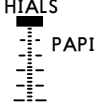
OEDR/DHA
KING ABDULAZIZ AB

16 AUG 19 **(11-4)**

JEPPESSEN DHAHRAN, SAUDI ARABIA
ILS DME Rwy 34R

ATIS 117.2		DHAHRAN Arrival (Radar) 124.650		DHAHRAN Tower West 118.4 East 118.7		Ground 121.7
LOC IDHA 109.9	Final Apch Crs 343°	GS MUNDU 1361' (1302')	ILS DA(H) 259' (200')	Apt Elev 84' TDZE 59'		
MISSED APCH: Climb to 1500', then climbing turn RIGHT to 2500' direct VOR and hold.						
Alt Set: hPa TDZ Elev: 2 hPa Trans level: FL 150 Trans alt: 13000' 1. Procedure not authorized when OE(R)-41 or OE(D)-43 active and Radar not available. 2. CAUTION: Antenna 161' 1.3 NM from threshold.						



Gnd speed-Kts	70	90	100	120	140	160	HIALS PAPI 	1500' ↑	
GS	3.00°	372	478	531	637	743			849
MAP at D0.6 IDHA									

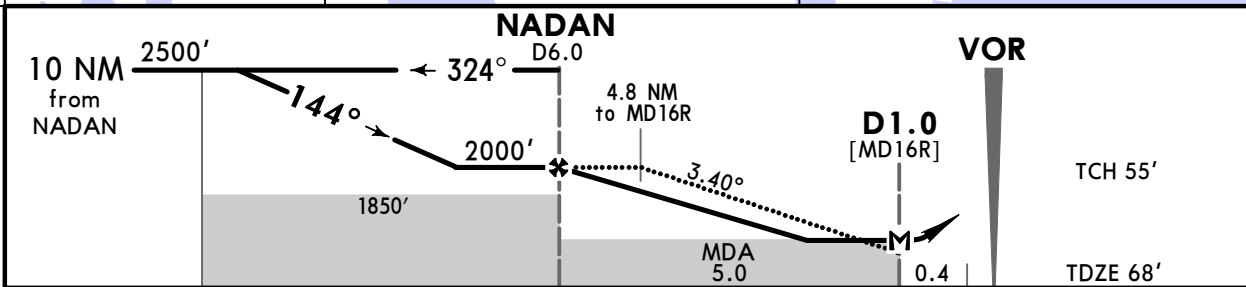
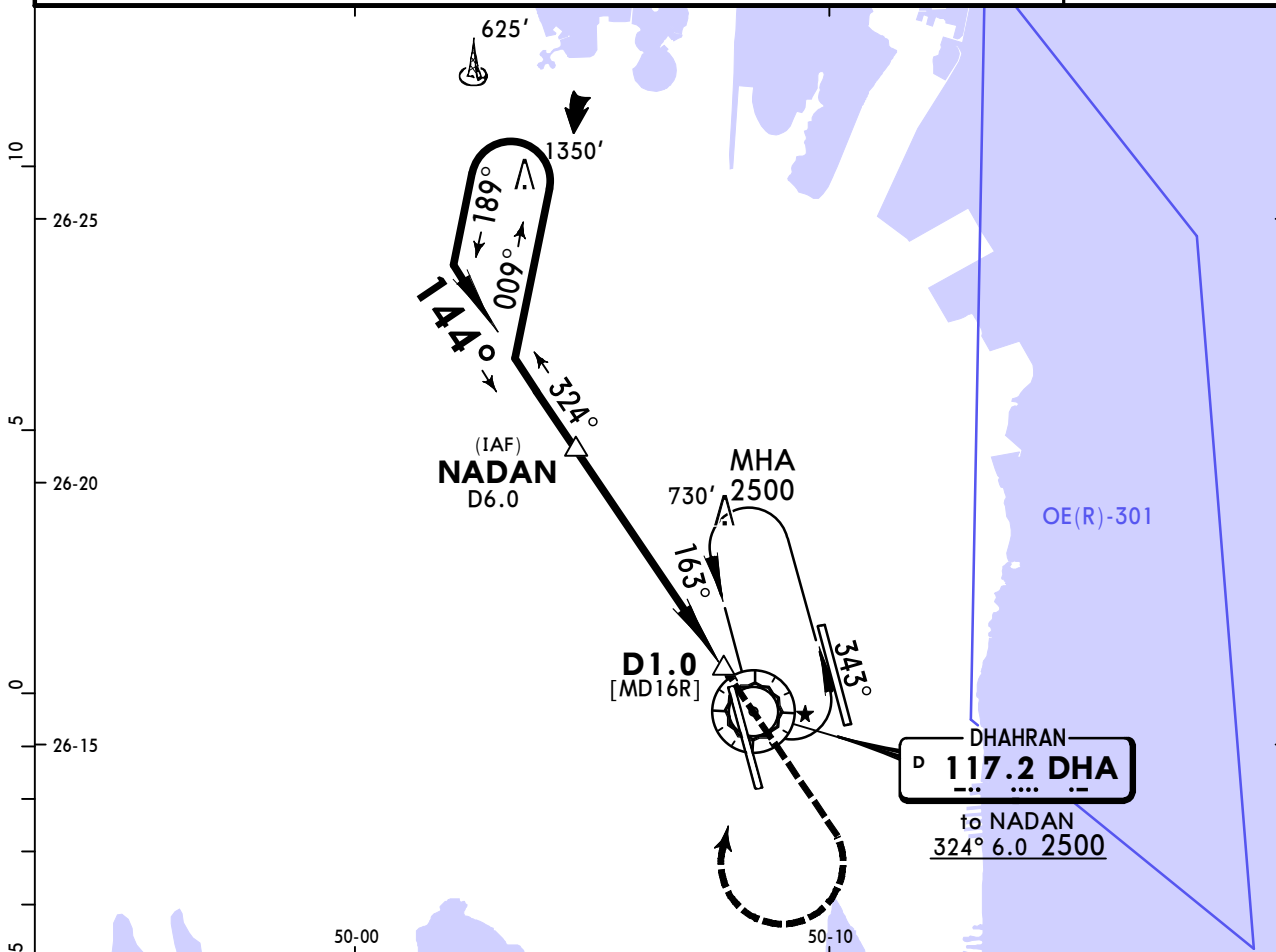
STRAIGHT-IN LANDING RWY 34R				CIRCLE-TO-LAND			
ILS		LOC (GS out)					
DA(H) 259' (200')		MDA(H) 420' (361')					
FULL		ALS out		ALS out			
A/B				A/B	NOT AUTHORIZED		
C	800m	1200m	800m	1600m			
D			1200m	2000m			

OEDR/DHA
KING ABDULAZIZ AB

16 AUG 19 **13-1**

JEPPESEN DHAHRAN, SAUDI ARABIA
VOR DME Rwy 16R

ATIS 117.2		DHAHRAN Arrival (Radar) 124.650		DHAHRAN Tower West 118.4 East 118.7		Ground 121.7
VOR DHA 117.2	Final Apch Crs 144°	Procedure Alt NADAN 2000' (1932')	MDA(H) 760' (692')	Apt Elev 84' TDZE 68'		2500 MSA DHA VOR
MISSED APCH: Climb to 1500', then climbing turn RIGHT to 2500' direct VOR and hold.						
Alt Set: hPa TDZ Elev: 2 hPa Trans level: FL 150 Trans alt: 13000' Procedure not authorized when OE(R)-41 or OE(D)-43 active and Radar not available.						



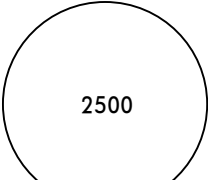
Gnd speed-Kts	70	90	100	120	140	160	HIALS PAPI 1500'
Descent Angle	3.40°	421	541	602	722	842	
MAP at D1.0							

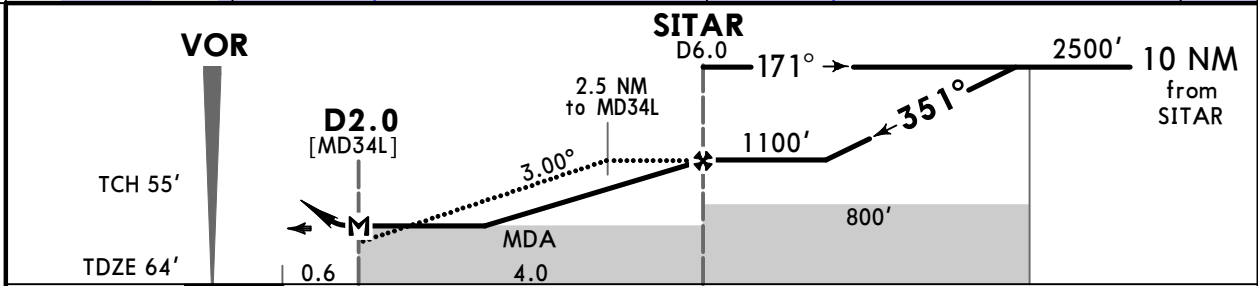
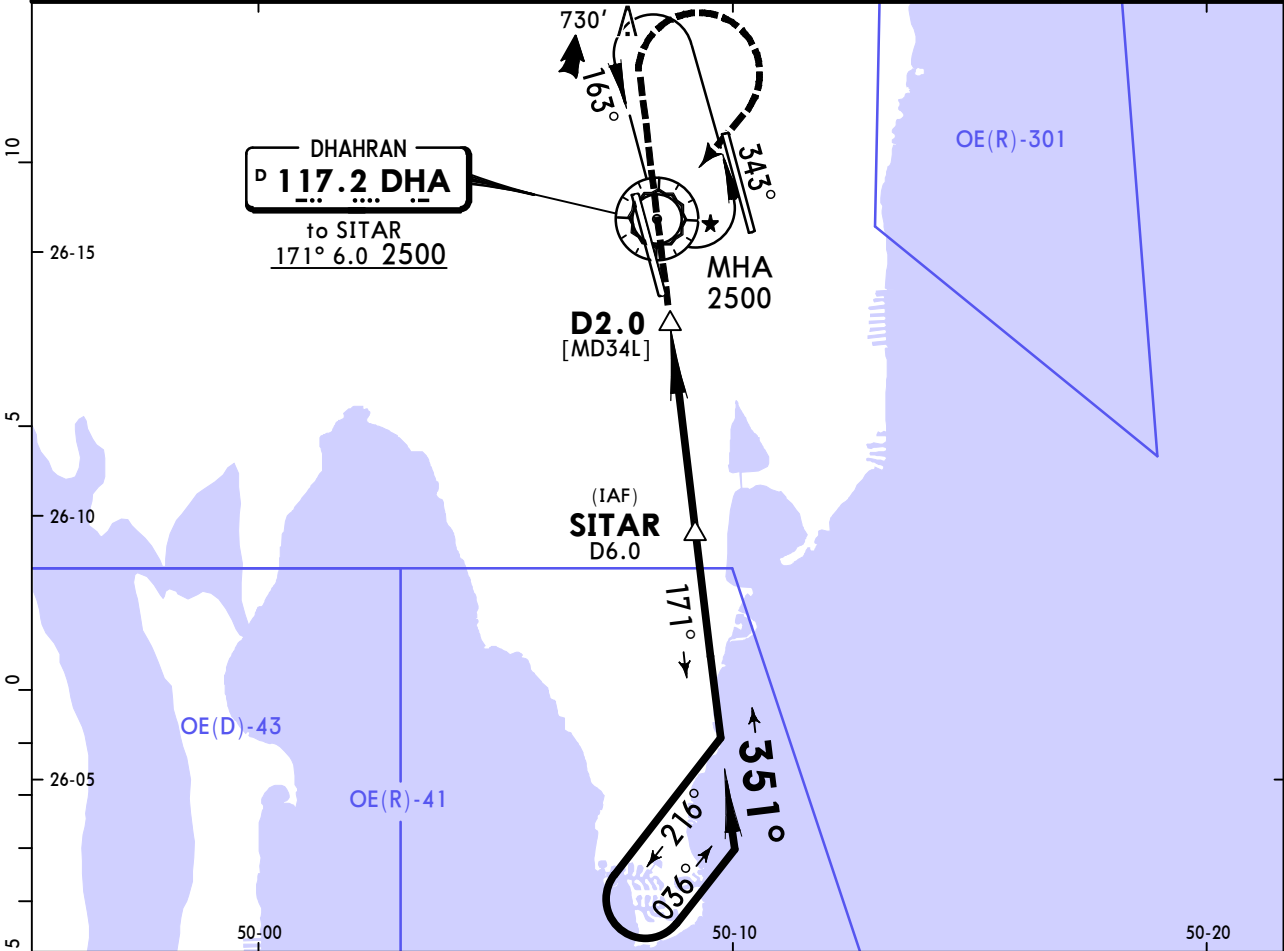
STRAIGHT-IN LANDING RWY 16R				CIRCLE-TO-LAND			
MDA(H) 760' (692')				ALS out			
A	800m		1600m		A	NOT AUTHORIZED	
B					B		
C	2400m		3200m		C		
D	2800m		3600m		D		

OEDR/DHA
KING ABDULAZIZ AB

16 AUG 19 **13-2**

JEPPESEN DHAHRAN, SAUDI ARABIA
VOR DME Rwy 34L

BRIEFING STRIP™	ATIS 117.2		DHAHRAN Arrival (Radar) 124.650		DHAHRAN Tower West 118.4 East 118.7		Ground 121.7
	VOR DHA 117.2	Final Apch Crs 351°	Procedure Alt SITAR 1100' (1036')	MDA(H) 380' (316')	Apt Elev 84' TDZE 64'		 2500 MSA DHA VOR
	MISSED APCH: Climb to 1500', then climbing turn RIGHT to 2500' direct VOR and hold.						
	Alt Set: hPa TDZ Elev: 2 hPa Trans level: FL 150 Trans alt: 13000' Procedure not authorized when OE(R)-41 or OE(D)-43 active and Radar not available.						



Gnd speed-Kts	70	90	100	120	140	160	HIALS PAPI 1500' ↑
Descent Angle 3.00°	372	478	531	637	743	849	
MAP at D2.0							

STRAIGHT-IN LANDING RWY 34L		CIRCLE-TO-LAND	
MDA(H) 380' (316')			
ALS out			
A		A	
B	800m	B	NOT AUTHORIZED
C		C	
D	1600m	D	

TERPS

Chart changes since cycle 20-2020

ADD = added chart, REV = revised chart, DEL = deleted chart.

ACT	PROCEDURE IDENT	INDEX	REV DATE	EFF DATE
DHAHRAN, (KING ABDULAZIZ AB - OEDR)				

TERMINAL CHART CHANGE NOTICES

No Chart Change Notices for Airport OEDR