

List of pages in this Trip Kit

Trip Kit Index

Airport Information For HSMN

Terminal Charts For HSMN

Revision Letter For Cycle 16-2023

Change Notices

Notebook

General Information

Location: MEROWE SDN
ICAO/IATA: HSMN / MWE
Lat/Long: N18° 26.58', E031° 50.62'
Elevation: 899 ft

Airport Use: Public
Daylight Savings: Not Observed
UTC Conversion: -2:00 = UTC
Magnetic Variation: 3.0° E

Fuel Types: Jet A-1
Customs: No
Airport Type: IFR
Landing Fee: Yes
Control Tower: Yes
Jet Start Unit: No
LLWS Alert: No
Beacon: Yes

Sunrise: 0400 Z
Sunset: 1515 Z

Runway Information

Runway: 02
Length x Width: 13186 ft x 197 ft
Surface Type: asphalt
TDZ-Elev: 876 ft
Lighting: Edge, ALS, TDZ
Stopway: 328 ft

Runway: 20
Length x Width: 13186 ft x 197 ft
Surface Type: asphalt
TDZ-Elev: 876 ft
Lighting: Edge, ALS, TDZ
Stopway: 328 ft

Communication Information

Merowe Tower: 118.400
Merowe Approach: 118.400

HSMN/MWE
MEROWE

JEPPESEN

MEROWE, SUDAN

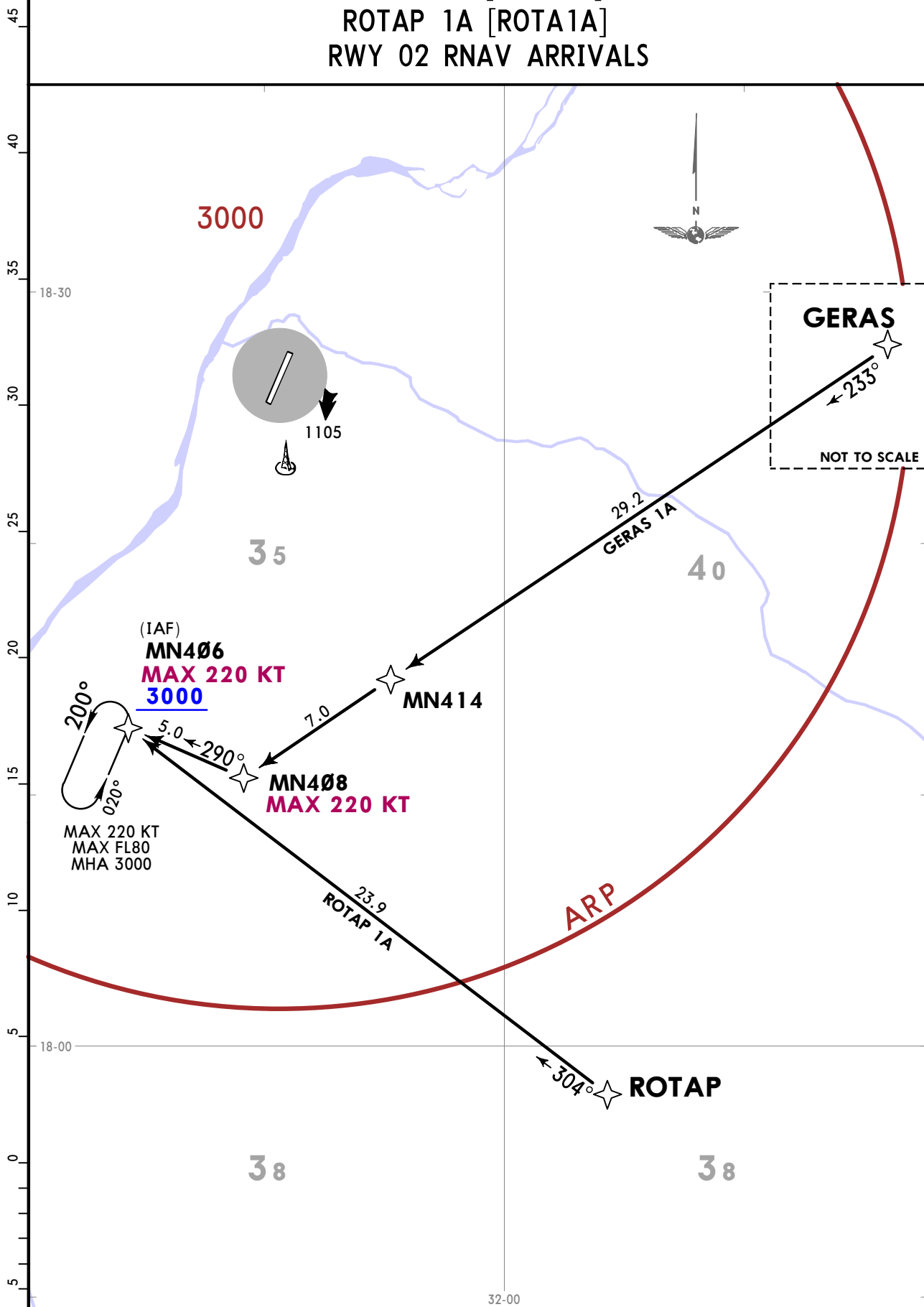
7 DEC 18 10-2

RNAV STAR

Apt Elev
899

Alt Set: hPa Trans level: By ATC
RNP-1 required.

GERAS 1A [GERA1A]
ROTAP 1A [ROTA1A]
RWY 02 RNAV ARRIVALS



STAR	ROUTING
GERAS 1A	GERAS - MN414 - MN408 (K220-) - MN406 (K220-; 3000+).
ROTAP 1A	ROTAP - MN406 (K220-; 3000+).

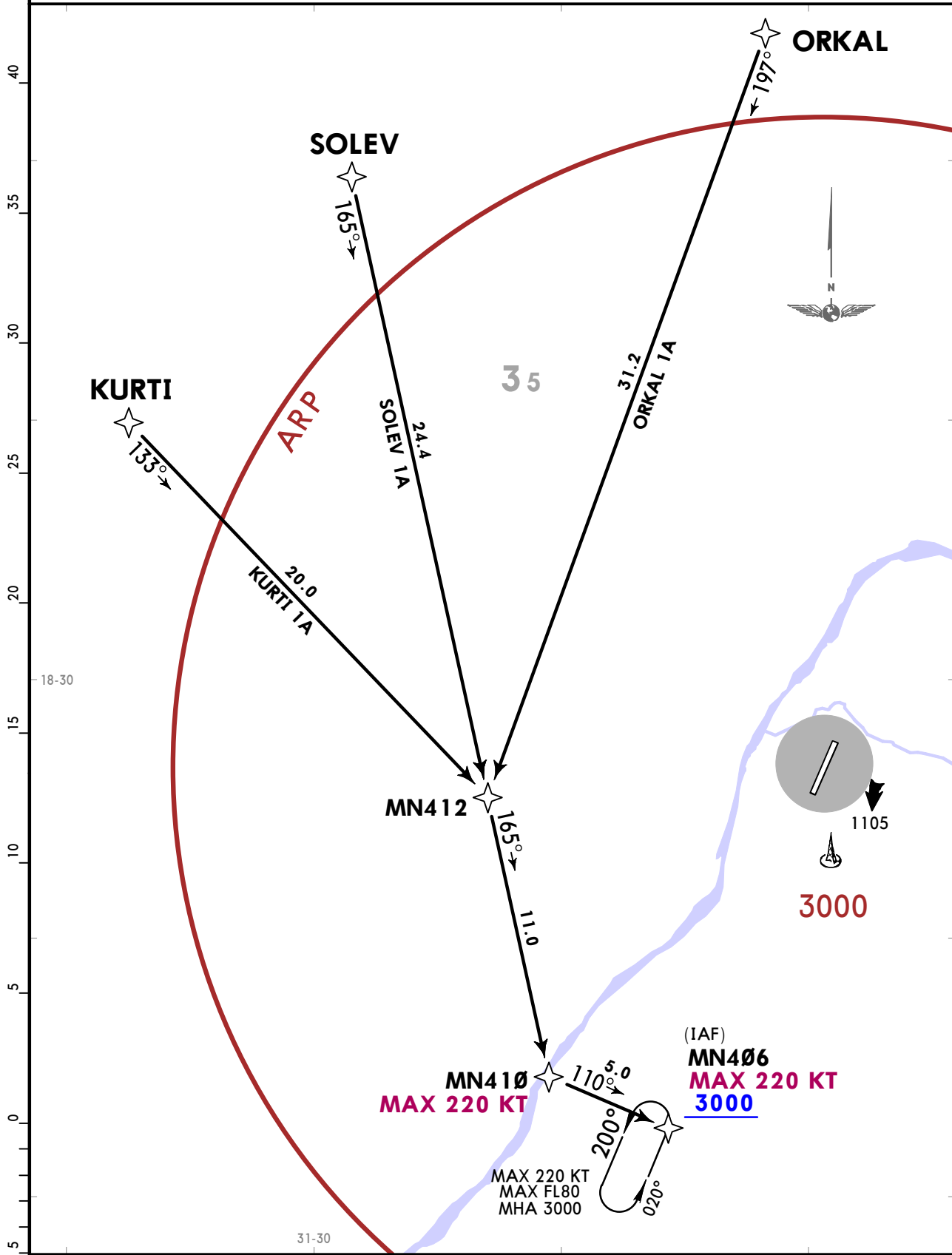
HSMN/MWE
MEROWE

JEPPESEN
7 DEC 18 (10-2A)

MEROWE, SUDAN
RNAV STAR

Apt Elev 899
Alt Set: hPa Trans level: By ATC
RNP-1 required.

KURTI 1A [KURT1A], ORKAL 1A [ORKA1A]
SOLEV 1A [SOLE1A]
RWY 02 RNAV ARRIVALS



STAR	ROUTING
KURTI 1A	KURTI - MN412 - MN410 (K220-) - MN406 (K220-; 3000+).
ORKAL 1A	ORKAL - MN412 - MN410 (K220-) - MN406 (K220-; 3000+).
SOLEV 1A	SOLEV - MN412 - MN410 (K220-) - MN406 (K220-; 3000+).

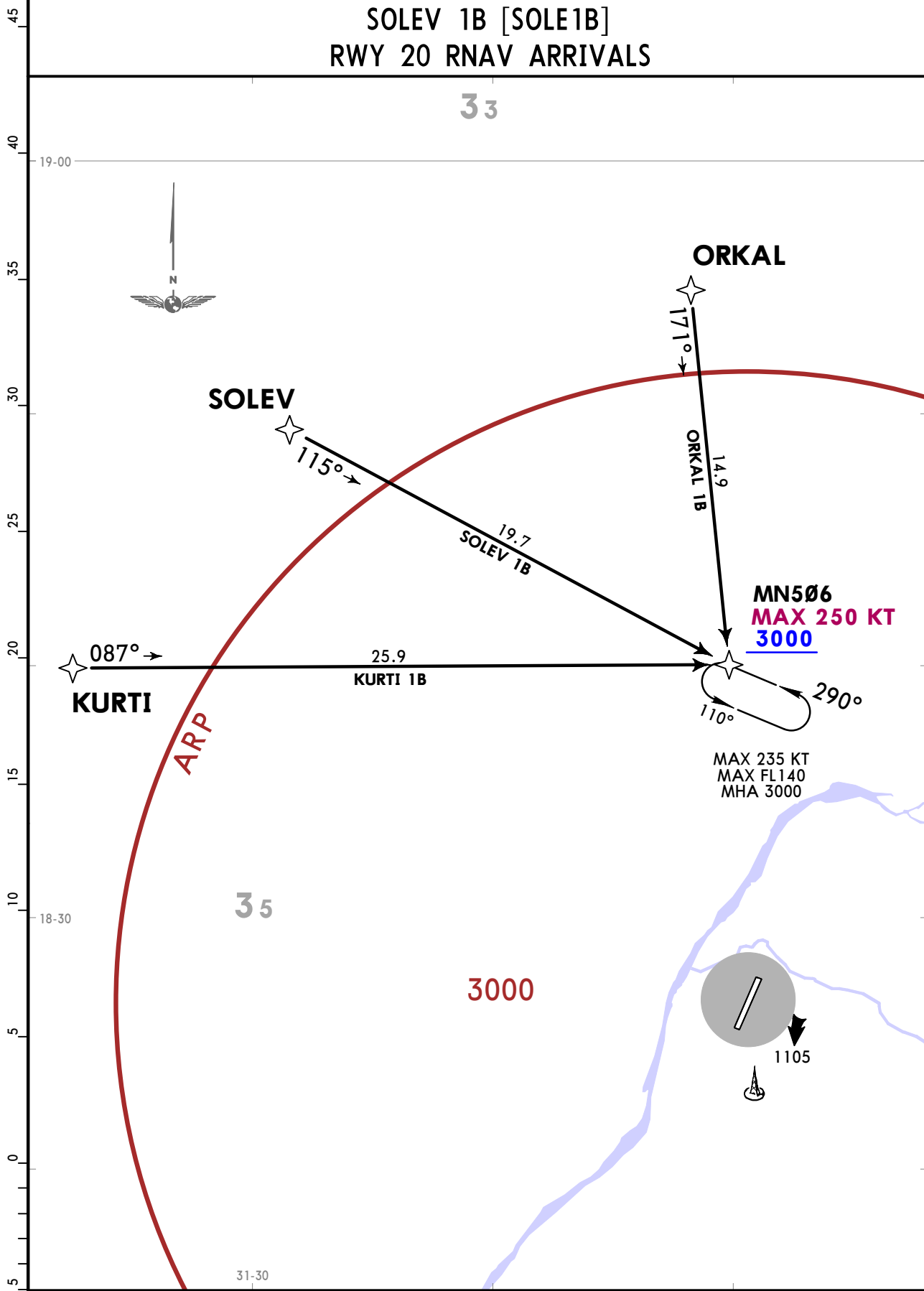
HSMN/MWE
MEROWE

JEPPESEN
7 DEC 18 (10-2C)

MEROWE, SUDAN
RNAV STAR

Apt Elev 899
Alt Set: hPa Trans level: By ATC
RNP-1 required.

KURTI 1B [KURT1B], ORKAL 1B [ORKA1B]
SOLEV 1B [SOLE1B]
RWY 20 RNAV ARRIVALS



STAR	ROUTING
KURTI 1B	KURTI - MN506 (K250-; 3000+).
ORKAL 1B	ORKAL - MN506 (K250-; 3000+).
SOLEV 1B	SOLEV - MN506 (K250-; 3000+).

CHANGES: New chart.

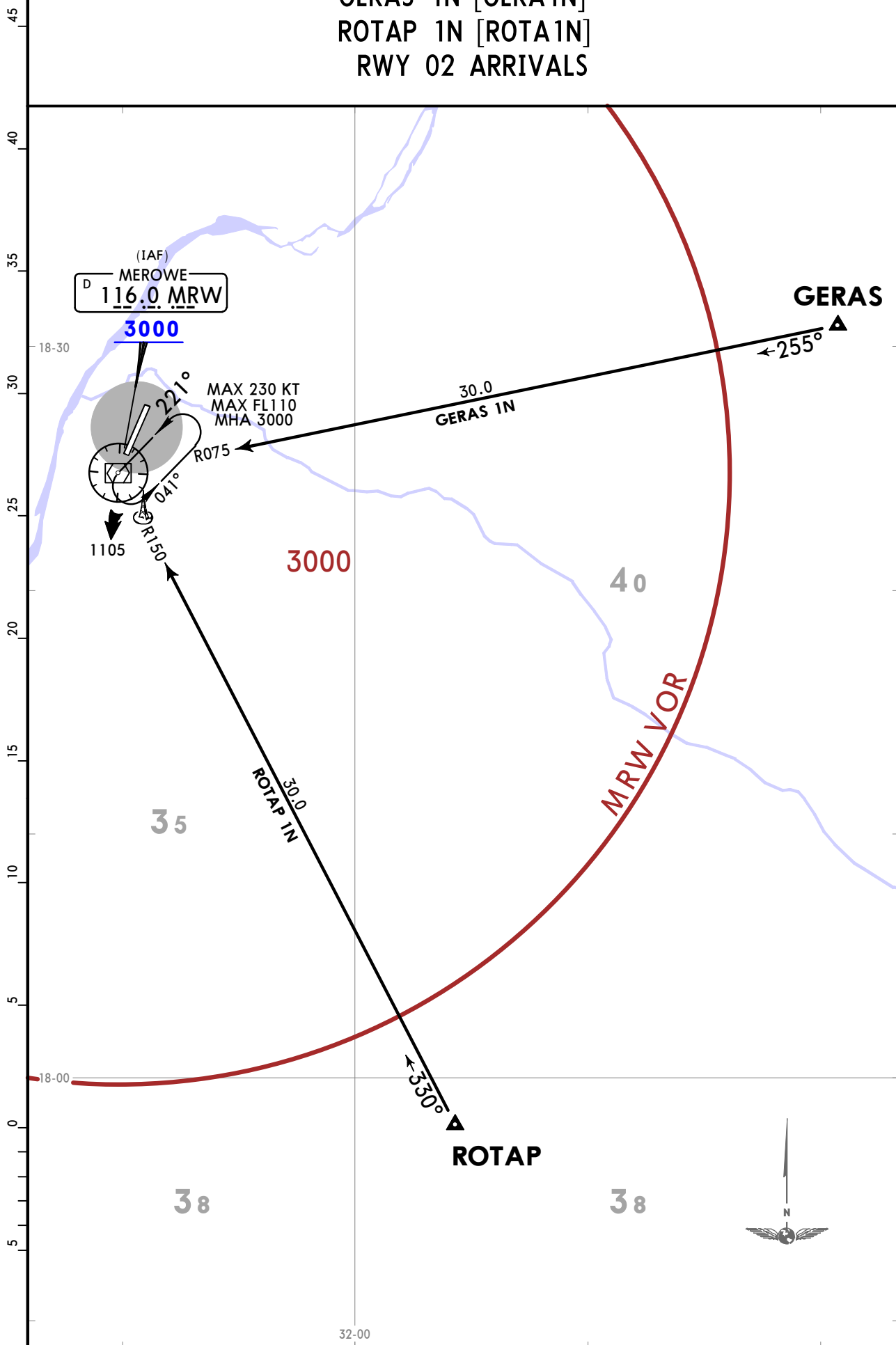
HSMN/MWE
MEROWE

JEPPESEN
7 DEC 18 (10-2D)

MEROWE, SUDAN
STAR

Apt Elev 899
Alt Set: hPa Trans level: By ATC
DME required.

GERAS 1N [GERA1N]
ROTAP 1N [ROTA1N]
RWY 02 ARRIVALS



HSMN/MWE
MEROWE

JEPPESEN
7 DEC 18 (10-2E)

MEROWE, SUDAN
STAR

Apt Elev 899
Alt Set: hPa Trans level: By ATC
DME required.

KURTI 1N [KURT1N]
ORKAL 1N [ORKA1N]
SOLEV 1N [SOLE1N]
RWY 02 ARRIVALS

45
40
35
30
25
20
15
10
5
0
5



ORKAL

174°

SOLEV

142°

KURTI

117°

ORKAL 1N

30.0

SOLEV 1N

30.0

KURTI 1N

30.0

MRW VOR

35

MAX 230 KT
MAX FL 110
MHA 3000

R354

R322

R297

221°

1105

(IAF)
MEROWE
116.0 MRW

3000

3000

18-30

31-30

HSMN/MWE
MEROWE

JEPPESEN
7 DEC 18 (10-2F)

MEROWE, SUDAN
STAR

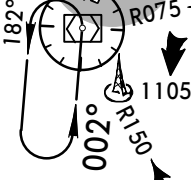
Apt Elev 899
Alt Set: hPa Trans level: By ATC
DME required.

GERAS 1S [GERA1S]
ROTAP 1S [ROTA1S]
RWY 20 ARRIVALS

45
40
35
30
25
20
15
10
5
0
5

(IAF)
MEROWE
D 116.0 MRW

18-30
3000



MAX 230 KT
MAX FL140
MHA 3000

3000

30.0
GERAS 1S

GERAS
←255°

35

40

MRW VOR

30.0
ROTAP 1S

←330°

ROTAP

38

38



32-00

HSMN/MWE
MEROWE

JEPPESEN
7 DEC 18 (10-2G)

MEROWE, SUDAN
STAR

Apt Elev 899
Alt Set: hPa Trans level: By ATC
DME required.

KURTI 1S [KURT1S]
ORKAL 1S [ORKA1S]
SOLEV 1S [SOLE1S]
RWY 20 ARRIVALS

45
40
35
30
25
20
15
10
5
0
5

19-00

33



ORKAL

SOLEV

KURTI

174°

142°

117°

ORKAL 1S
30.0

SOLEV 1S
30.0

KURTI 1S
30.0

MRW VOR

35

18-30

MAX 230 KT
MAX FL 140
MHA 3000

R322
R297
181

R354

020°

1105

(IAF)
MEROWE
D 116.0 MRW
3000

3000

31-30

HSMN/MWE
MEROWE

JEPPESEN

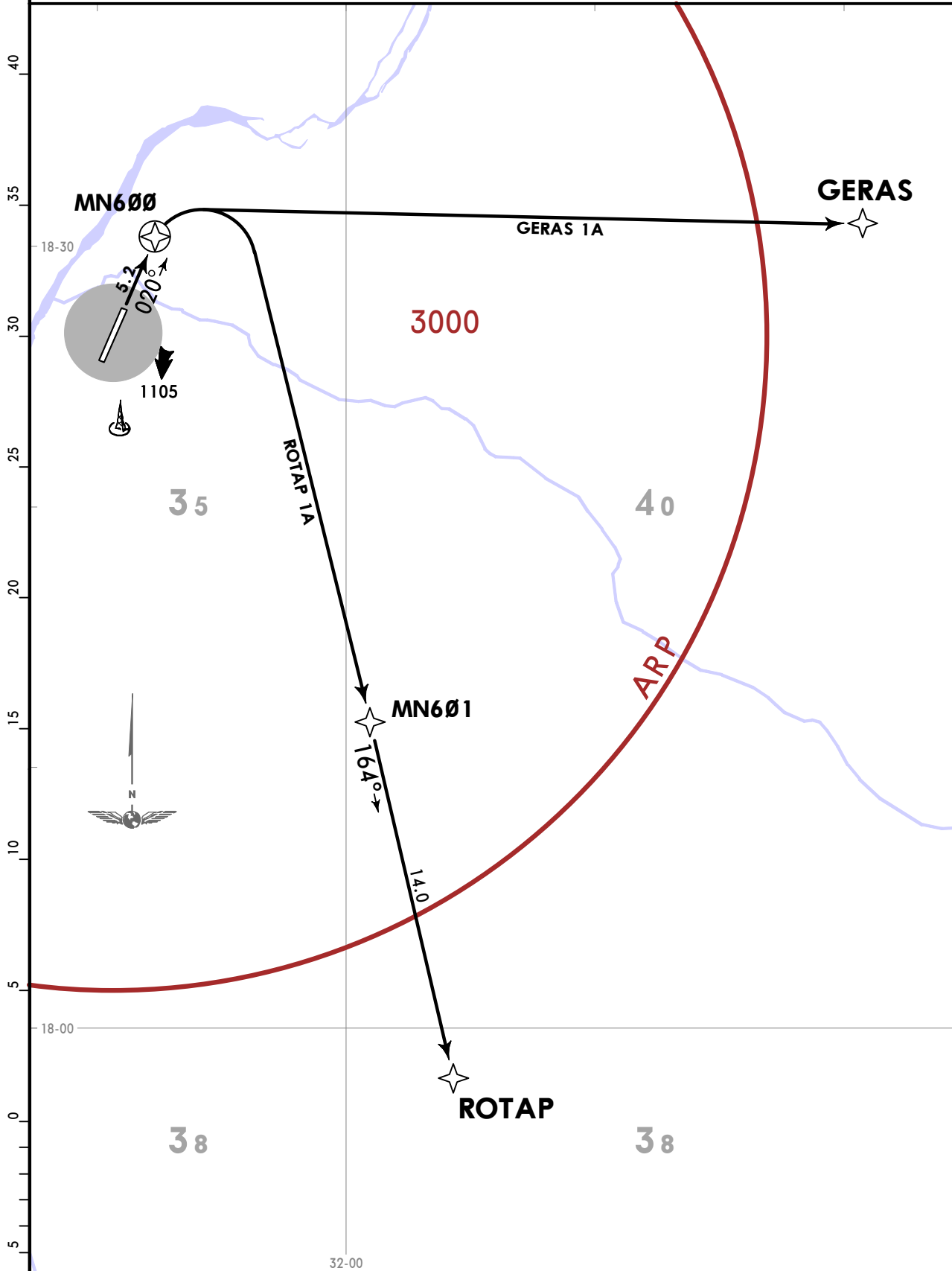
MEROWE, SUDAN

7 DEC 18 10-3

RNAV SID

Apt Elev 899 Trans alt: 7000
1. RNP-1 required. 2. RNAV (GNSS).

GERAS 1A [GERA1A]
ROTAP 1A [ROTA1A]
RWY 02 RNAV DEPARTURES



SID	ROUTING
GERAS 1A	Climb on 020° track to MN600, turn RIGHT direct to GERAS.
ROTAP 1A	Climb on 020° track to MN600, turn RIGHT direct to MN601, then to ROTAP.

CHANGES: New chart.

© JEPPESEN, 2018. ALL RIGHTS RESERVED.

HSMN/MWE
MEROWE

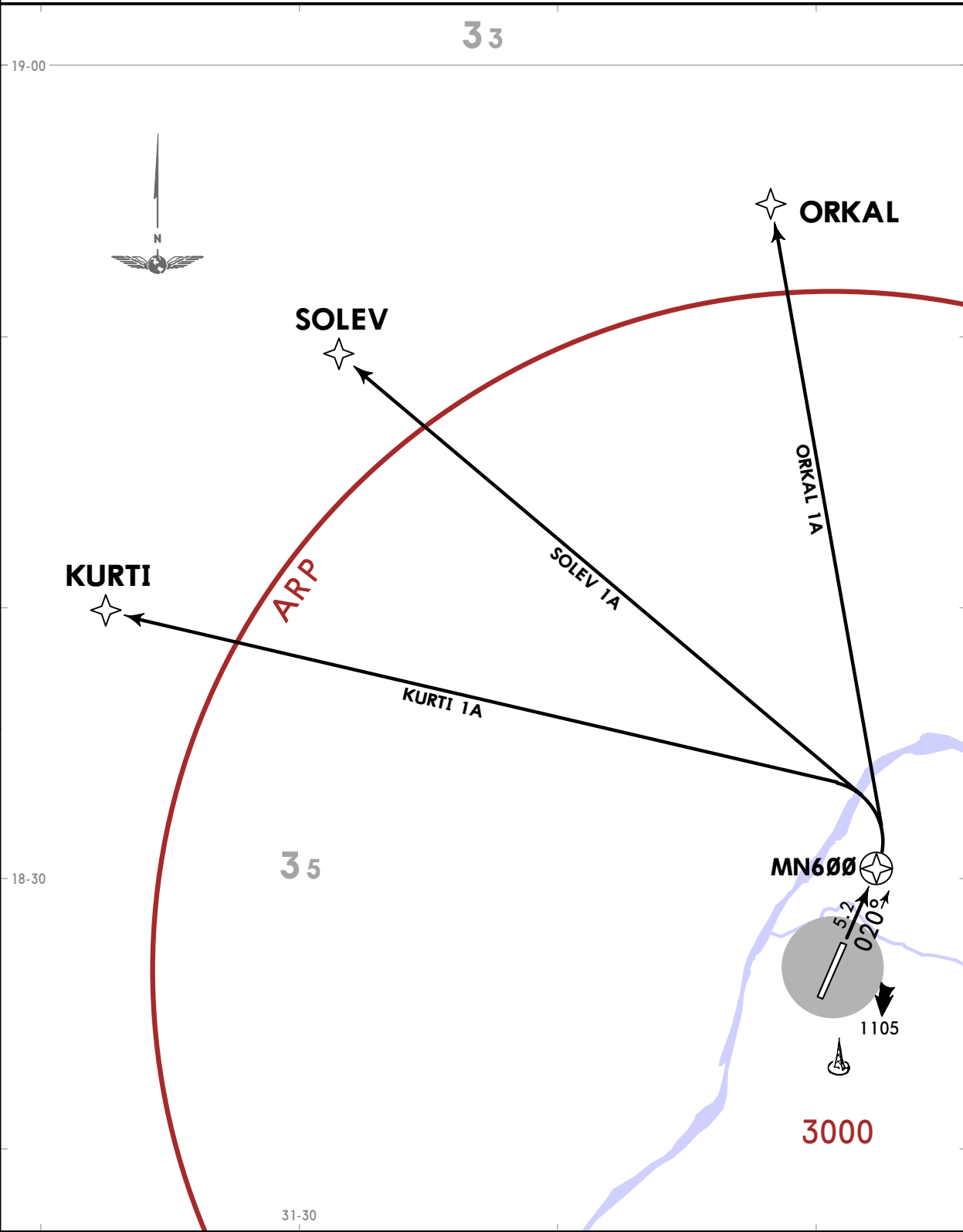
JEPPESEN
7 DEC 18 (10-3A)

MEROWE, SUDAN
RNAV SID

Apt Elev 899
Trans alt: 7000
1. RNP-1 required. 2. RNAV (GNSS).

KURTI 1A [KURT1A]
ORKAL 1A [ORKA1A]
SOLEV 1A [SOLE1A]
RWY 02 RNAV DEPARTURES

45
40
35
30
25
20
15
10
5
0
5



SID	ROUTING
KURTI 1A	Climb on 020° track to MN600, turn LEFT direct to KURTI.
ORKAL 1A	Climb on 020° track to MN600, turn LEFT direct to ORKAL.
SOLEV 1A	Climb on 020° track to MN600, turn LEFT direct to SOLEV.

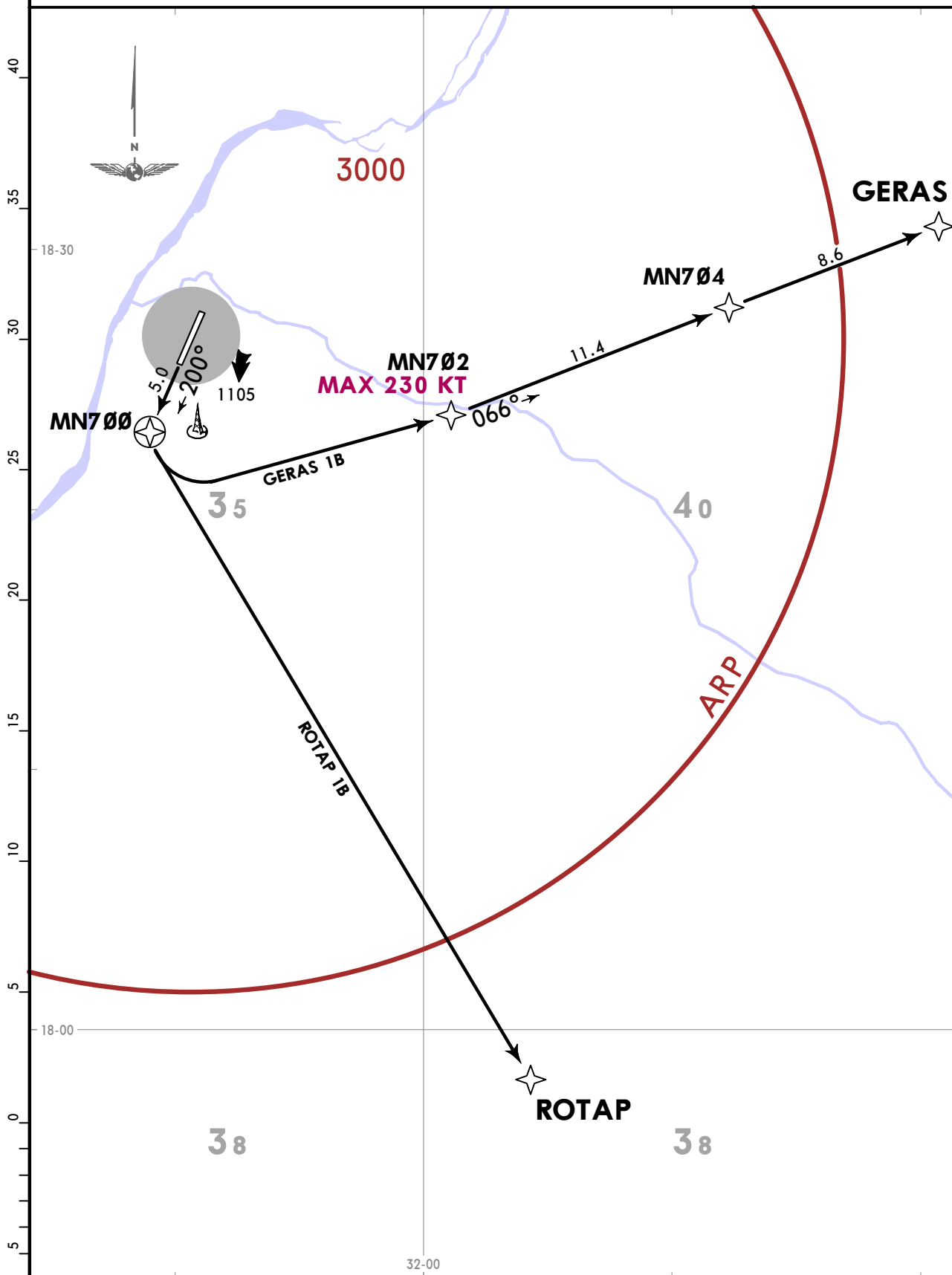
HSMN/MWE
MEROWE

JEPPESEN
7 DEC 18 (10-3B)

MEROWE, SUDAN
RNAV SID

Apt Elev 899
Trans alt: 7000
1. RNP-1 required. 2. RNAV (GNSS).

GERAS 1B [GERA1B]
ROTAP 1B [ROTA1B]
RWY 20 RNAV DEPARTURES



SID	ROUTING
GERAS 1B	Climb on 200° track to MN700, turn LEFT direct to MN702, then to MN704, then to GERAS.
ROTAP 1B	Climb on 200° track to MN700, turn LEFT direct to ROTAP.

CHANGES: New chart.

© JEPPESEN, 2018. ALL RIGHTS RESERVED.

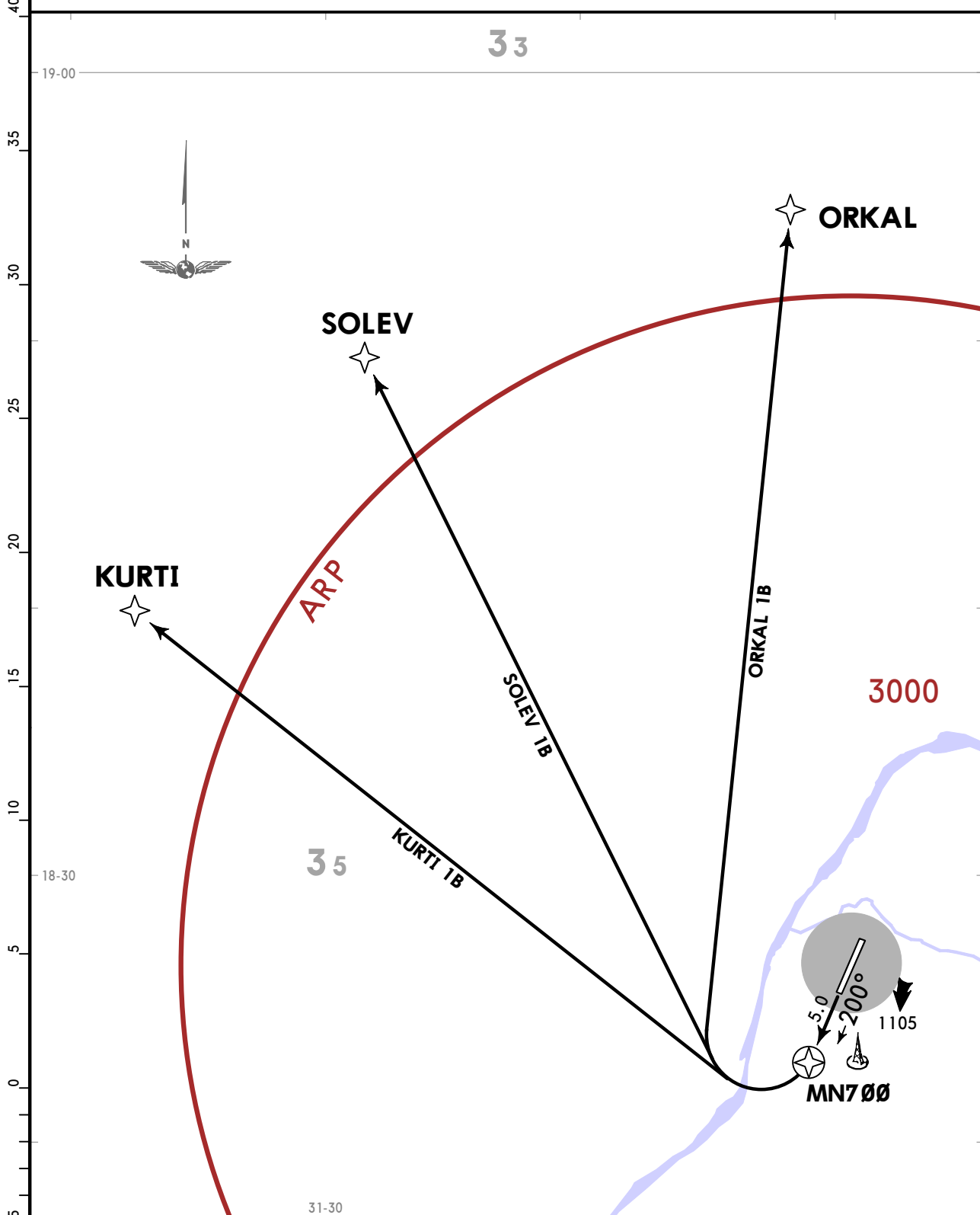
HSMN/MWE
MEROWE

JEPPESEN
7 DEC 18 **(10-3C)**

MEROWE, SUDAN
RNAV SID

Apt Elev **899** Trans alt: 7000
1. RNP-1 required. 2. RNAV (GNSS).

KURTI 1B [KURT1B]
ORKAL 1B [ORKA1B]
SOLEV 1B [SOLE1B]
RWY 20 RNAV DEPARTURES



SID	ROUTING
KURTI 1B	Climb on 200° track to MN7000, turn RIGHT direct to KURTI.
ORKAL 1B	Climb on 200° track to MN7000, turn RIGHT direct to ORKAL.
SOLEV 1B	Climb on 200° track to MN7000, turn RIGHT direct to SOLEV.

HSMN/MWE
MEROWE

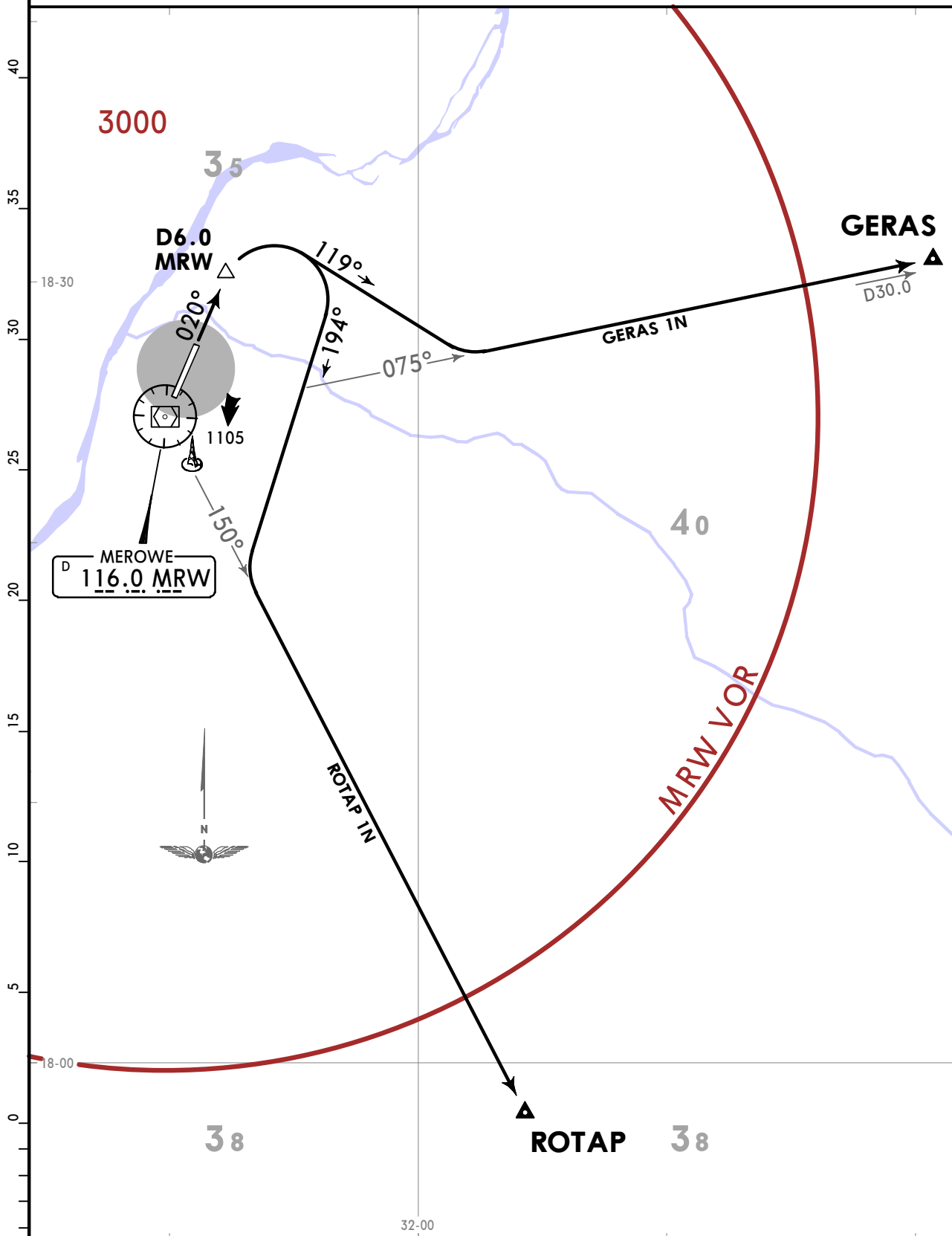
JEPPESEN
7 DEC 18 **(10-3D)**

MEROWE, SUDAN
SID

Apt Elev
899

Trans alt: 7000
DME required.

GERAS 1N [GERA1N]
ROTAP 1N [ROTA1N]
RWY 02 DEPARTURES



SID	ROUTING
GERAS 1N	Climb on MRW R020 to D6.0 MRW, turn RIGHT, 119° track, intercept MRW R075 to GERAS.
ROTAP 1N	Climb on MRW R020 to D6.0 MRW, turn RIGHT, 194° track, intercept MRW R150 to ROTAP.

HSMN/MWE
MEROWE

JEPPESEN
7 DEC 18 **(10-3E)**

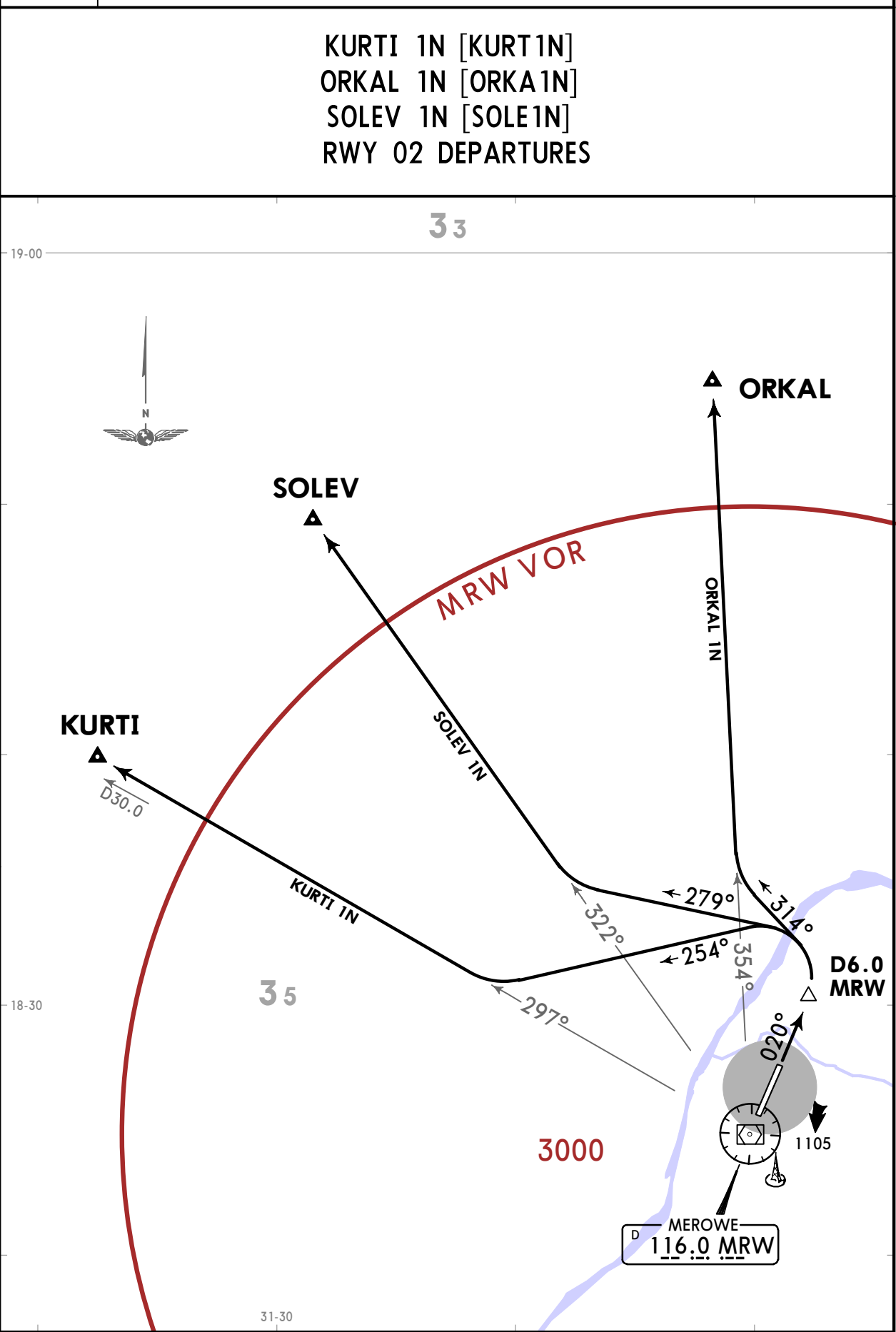
MEROWE, SUDAN
SID

Apt Elev
899
Trans alt: 7000
DME required.

KURTI 1N [KURT1N]
ORKAL 1N [ORKA1N]
SOLEV 1N [SOLE1N]
RWY 02 DEPARTURES

45
40
35
30
25
20
15
10
5
0
5

19-00
18-30
31-30



SID	ROUTING
KURTI 1N	Climb on MRW R020 to D6.0 MRW, turn LEFT, 254° track, intercept MRW R297 to KURTI.
ORKAL 1N	Climb on MRW R020 to D6.0 MRW, turn LEFT, 314° track, intercept MRW R354 to ORKAL.
SOLEV 1N	Climb on MRW R020 to D6.0 MRW, turn LEFT, 279° track, intercept MRW R322 to SOLEV.

CHANGES: New chart.

© JEPPESEN, 2018. ALL RIGHTS RESERVED.

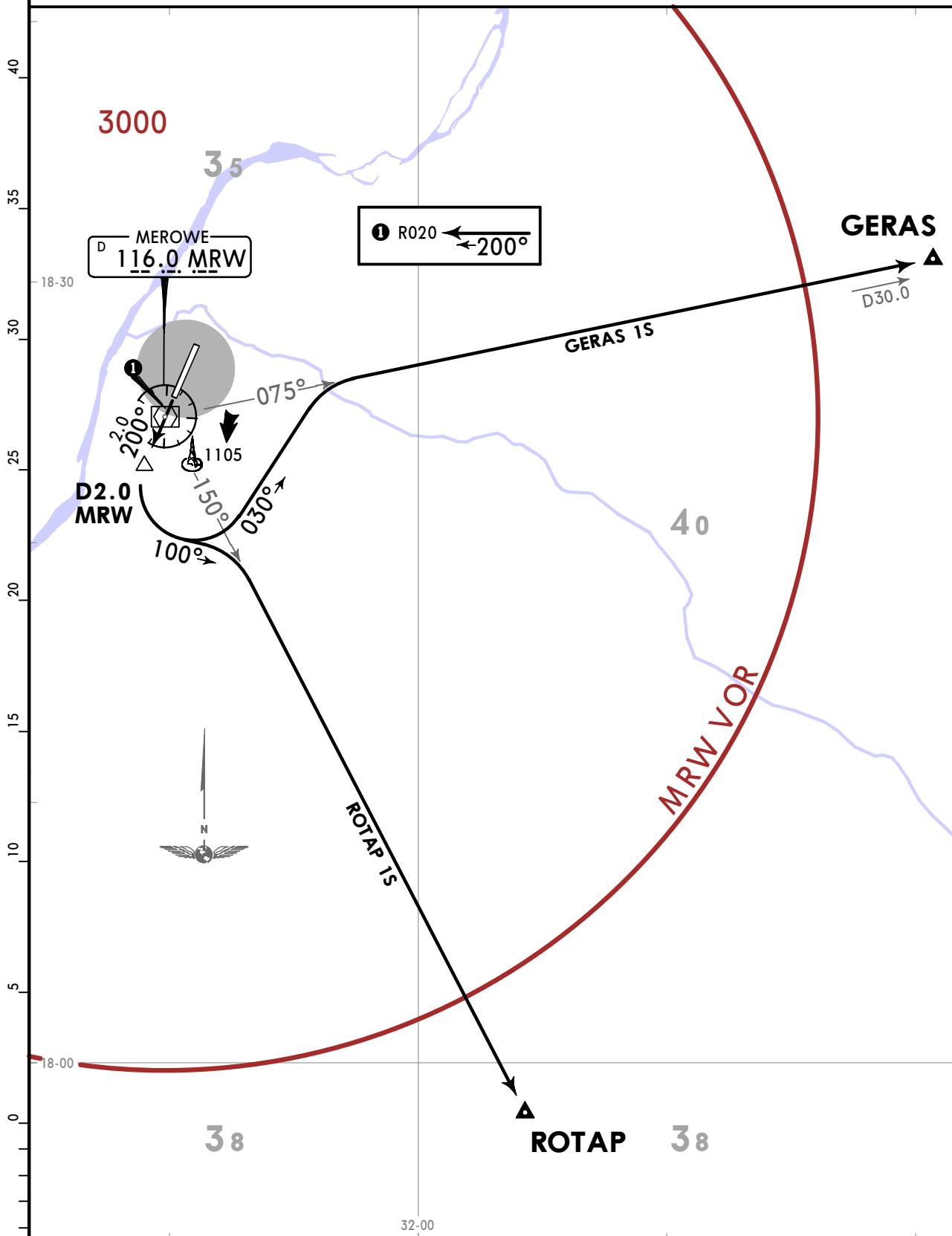
HSMN/MWE
MEROWE

JEPPESEN
7 DEC 18 (10-3F)

MEROWE, SUDAN
SID

Apt Elev
899
Trans alt: 7000
DME required.

GERAS 1S [GERA1S]
ROTAP 1S [ROTA1S]
RWY 20 DEPARTURES



SID	ROUTING
GERAS 1S	Climb on MRW R020 inbound to MRW, MRW R200 to D2.0 MRW, turn LEFT, 030° track, intercept MRW R075 to GERAS.
ROTAP 1S	Climb on MRW R020 inbound to MRW, MRW R200 to D2.0 MRW, turn LEFT, 100° track, intercept MRW R150 to ROTAP.

HSMN/MWE
MEROWE

JEPPESEN
7 DEC 18 **(10-3G)**

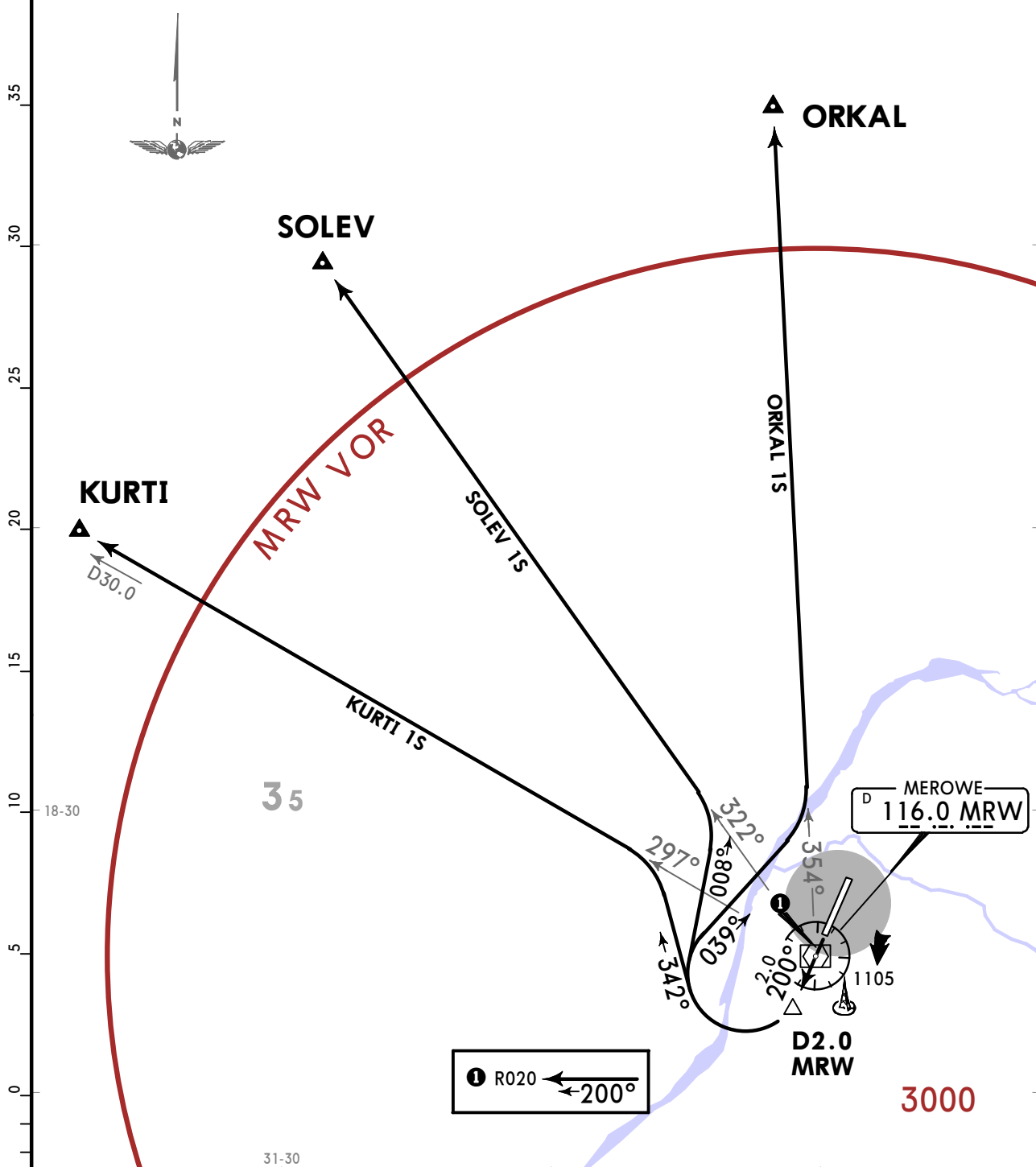
MEROWE, SUDAN
SID

Apt Elev
899

Trans alt: 7000
DME required.

KURTI 1S [KURT1S]
ORKAL 1S [ORKA1S]
SOLEV 1S [SOLE1S]
RWY 20 DEPARTURES

19-00



SID	ROUTING
KURTI 1S	Climb on MRW R020 inbound to MRW, MRW R200 to D2.0 MRW, turn RIGHT, 342° track, intercept MRW R297 to KURTI.
ORKAL 1S	Climb on MRW R020 inbound to MRW, MRW R200 to D2.0 MRW, turn RIGHT, 039° track, intercept MRW R354 to ORKAL.
SOLEV 1S	Climb on MRW R020 inbound to MRW, MRW R200 to D2.0 MRW, turn RIGHT, 008° track, intercept MRW R322 to SOLEV.

CHANGES: New chart.

© JEPPESEN, 2018. ALL RIGHTS RESERVED.

HSMN/MWE

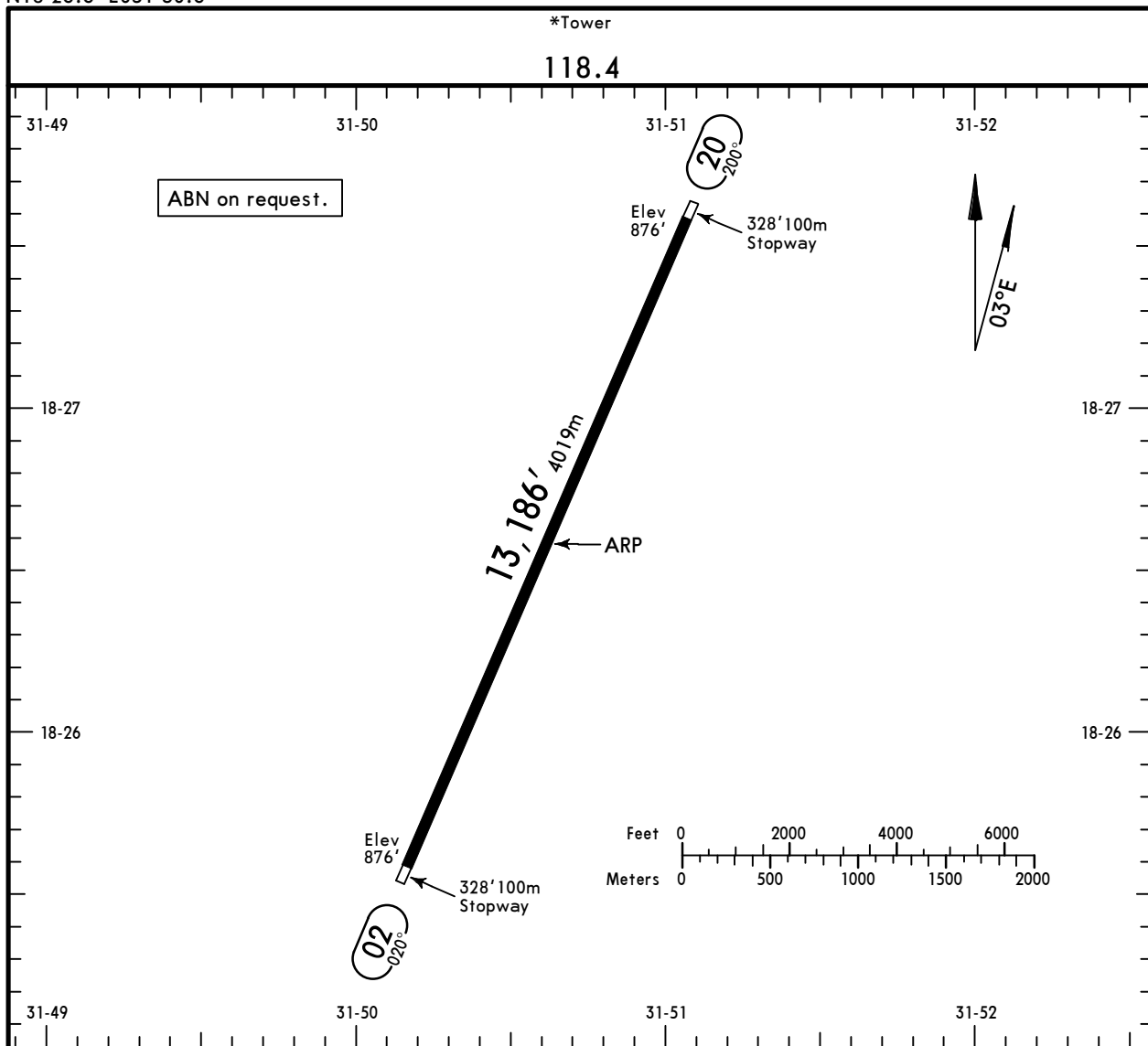
Apt Elev **899'**
N18 26.6 E031 50.6

JEPPESEN

27 SEP 19 **(10-9)**

MEROWE, SUDAN

MEROWE



ADDITIONAL RUNWAY INFORMATION

RWY	LANDING BEYOND	USABLE LENGTHS		TAKE-OFF	WIDTH
		Threshold	Glide Slope		
02 20	RL CL (15m) HIALS-II ① TDZ APAPI-L(3.0°) RVR		12,218' 3724m		197' 60m
			12,277' 3742m		

① Configuration unknown.

TAKE-OFF

**AIR CARRIER (JAA)
All Rwys**

LVP must be in force

	RL & CL	RCLM (DAY only) or RL	RCLM (DAY only) or RL
A			
B	200m	250m	400m
C			
D	250m	300m	

HSMN/MWE



Standard

MEROWE, SUDAN
MEROWE

STRAIGHT-IN RWY		A	B	C	D	
02	CAT 2 ILS	976'(100') R300m	976'(100') R300m	976'(100') R300m	976'(100') R300m	
	ILS FULL TDZ or CL out ALS out	1076'(200') R550m ① R550m R1200m	1076'(200') R550m ① R550m R1200m	1076'(200') R550m ① R550m R1200m	1076'(200') R550m ① R550m R1200m	
	② LOC ALS out	1140'(264') R750m R1300m	1140'(264') R750m R1300m	1140'(264') R750m R1300m	1150'(274') R750m R1300m	
	② RNP (LNAV) ALS out	1170'(294') R750m R1400m	1170'(294') R750m R1400m	1170'(294') R750m R1400m	1170'(294') R750m R1400m	
	② VOR Z ALS out	1170'(294') R750m R1400m	1170'(294') R750m R1400m	1170'(294') R750m R1400m	1180'(304') R750m R1400m	
	② VOR Y ALS out	1400'(524') R1500m R1500m	1400'(524') R1500m R1500m	1400'(524') R1700m R2400m	1400'(524') R1700m R2400m	
	VOR Y ALS out	1400'(524') R1900m R2600m	1400'(524') R1900m R2600m	1400'(524') R2100m R2800m	1400'(524') R2100m R2800m	
	20	CAT 2 ILS	976'(100') R300m	976'(100') R300m	976'(100') R300m	976'(100') R300m
		ILS FULL TDZ or CL out ALS out	1076'(200') R550m ① R550m R1200m	1076'(200') R550m ① R550m R1200m	1076'(200') R550m ① R550m R1200m	1076'(200') R550m ① R550m R1200m
		② LOC ALS out	1170'(294') R750m R1400m	1170'(294') R750m R1400m	1170'(294') R750m R1400m	1170'(294') R750m R1400m
② RNP (LNAV) ALS out		1170'(294') R750m R1400m	1170'(294') R750m R1400m	1170'(294') R750m R1400m	1170'(294') R750m R1400m	
② VOR Z ALS out		1170'(294') R750m R1400m	1170'(294') R750m R1400m	1170'(294') R750m R1400m	1170'(294') R750m R1400m	
② VOR Y ALS out		1550'(674') R1500m R1500m	1550'(674') R1500m R1500m	1550'(674') R2400m R2400m	1550'(674') R2400m R2400m	
VOR Y ALS out		1550'(674') R2600m R3300m	1550'(674') R2600m R3300m	1550'(674') R2800m R3500m	1550'(674') R2800m R3500m	

① W/o HUD/AP/FD: RVR 750m.

② Continuous Descent Final Approach.

HSMN



Standard

MEROWE, SUDAN
MEROWE

CIRCLE-TO-LAND	100 KT	135 KT	180 KT	205 KT
	① 1340' (441') V1900m	① 1400' (501') V2800m	1630' (731') V3700m	1760' (861') V4600m

① or higher minimums of preceding straight-in approach

TAKE-OFF

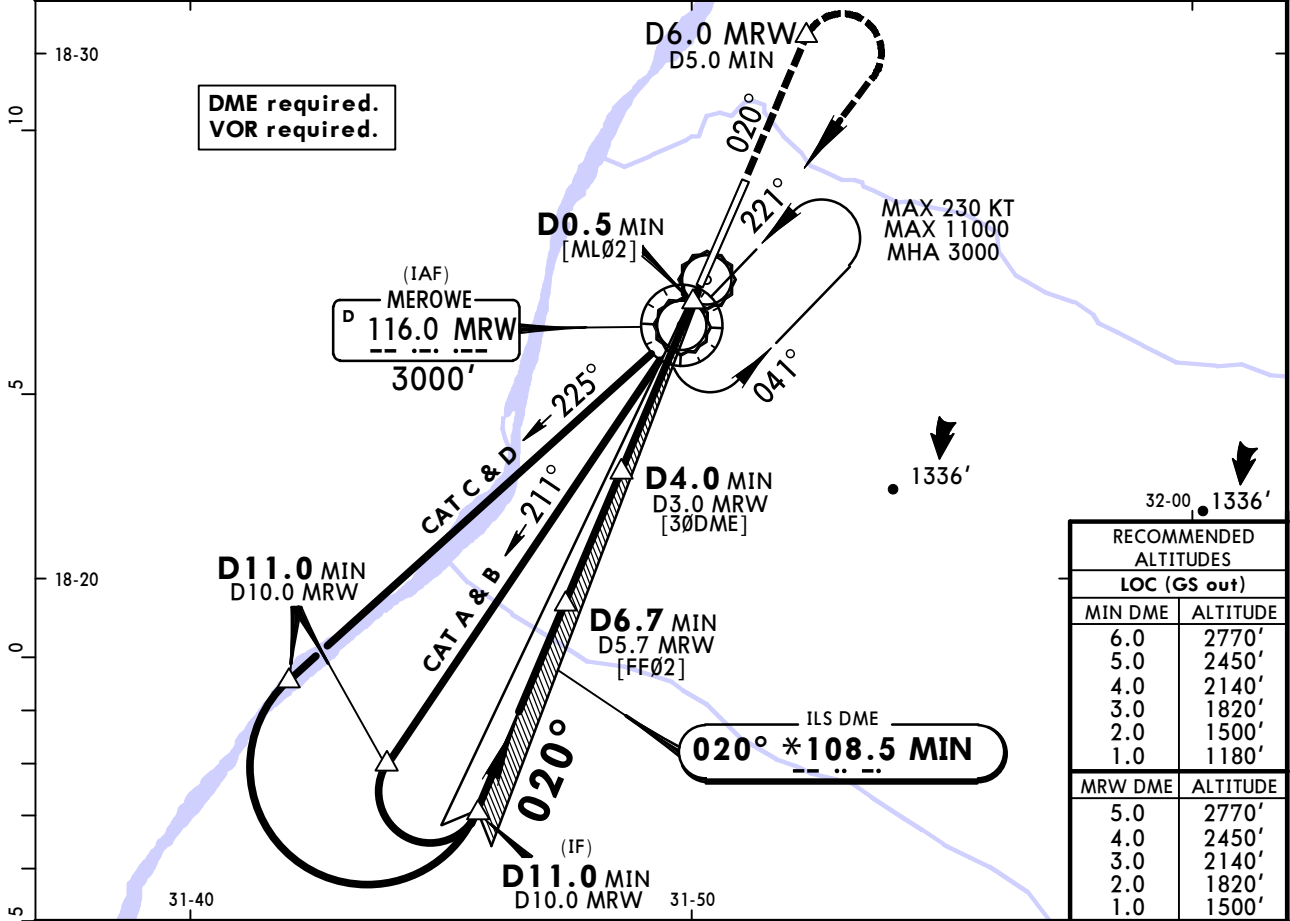
	Low Visibility Take-off			Day: RL or RCLM Night: RL or CL	Adequate vis ref (Day only)
	RL, CL & relevant RVR	RL & CL	Day: RL & RCLM Night: RL or CL		
A	TDZ, MID, RO R150m	R200m	R300m	400m	500m
B					
C					
D					

HSMN/MWE MEROWE

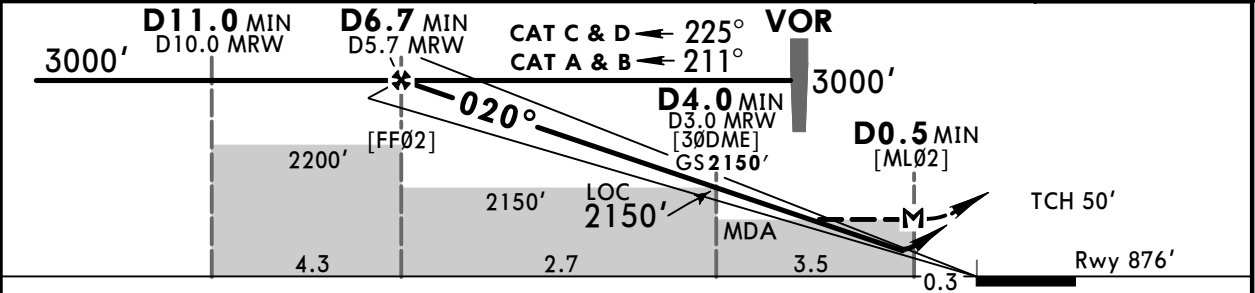
JEPPESEN
7 DEC 18 (11-1)

MEROWE, SUDAN ILS or LOC Rwy 02

*MEROWE Approach				*MEROWE Tower		
118.4				118.4		
LOC MIN *108.5	Final Apch Crs 020°	GS D4.0 MIN 2150' (1274')	ILS DA(H) 1076' (200')	Apt Elev 899'	3000	
MISSED APCH: Climb STRAIGHT AHEAD to D6.0 MRW, then turn RIGHT direct to VOR up to 3000'. At VOR join holding, or as directed. MAX 230 KT. If unable to reach 3000' over VOR, continue to climb in holding up to 3000'.						
Alt Set: hPa		Rwy Elev: 32 hPa	Trans level: By ATC		Trans alt: 7000'	
MSA MRW VOR						



RECOMMENDED ALTITUDES	
LOC (GS out)	
MIN DME	ALTITUDE
6.0	2770'
5.0	2450'
4.0	2140'
3.0	1820'
2.0	1500'
1.0	1180'
MRW DME	ALTITUDE
5.0	2770'
4.0	2450'
3.0	2140'
2.0	1820'
1.0	1500'



Gnd speed-Kts	70	90	100	120	140	160	HIALS PAPI-L	230 KT MAX	D6.0 MRW	
ILS GS or LOC Descent Angle	3.00°	372	478	531	637	743				849
MAP at D0.5 MIN										

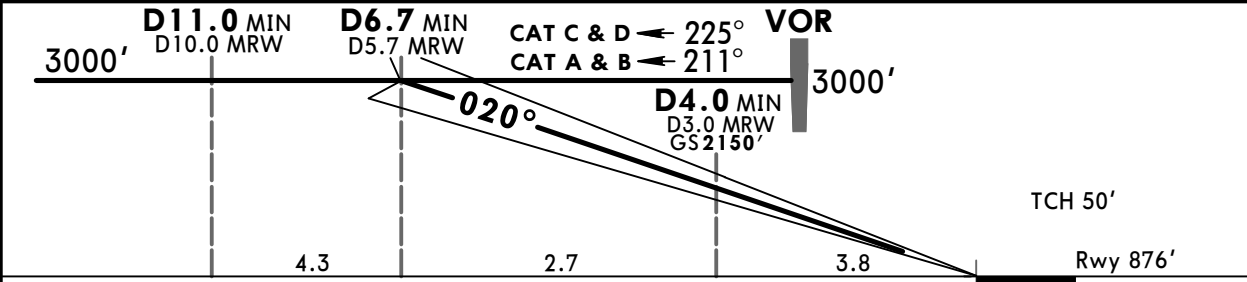
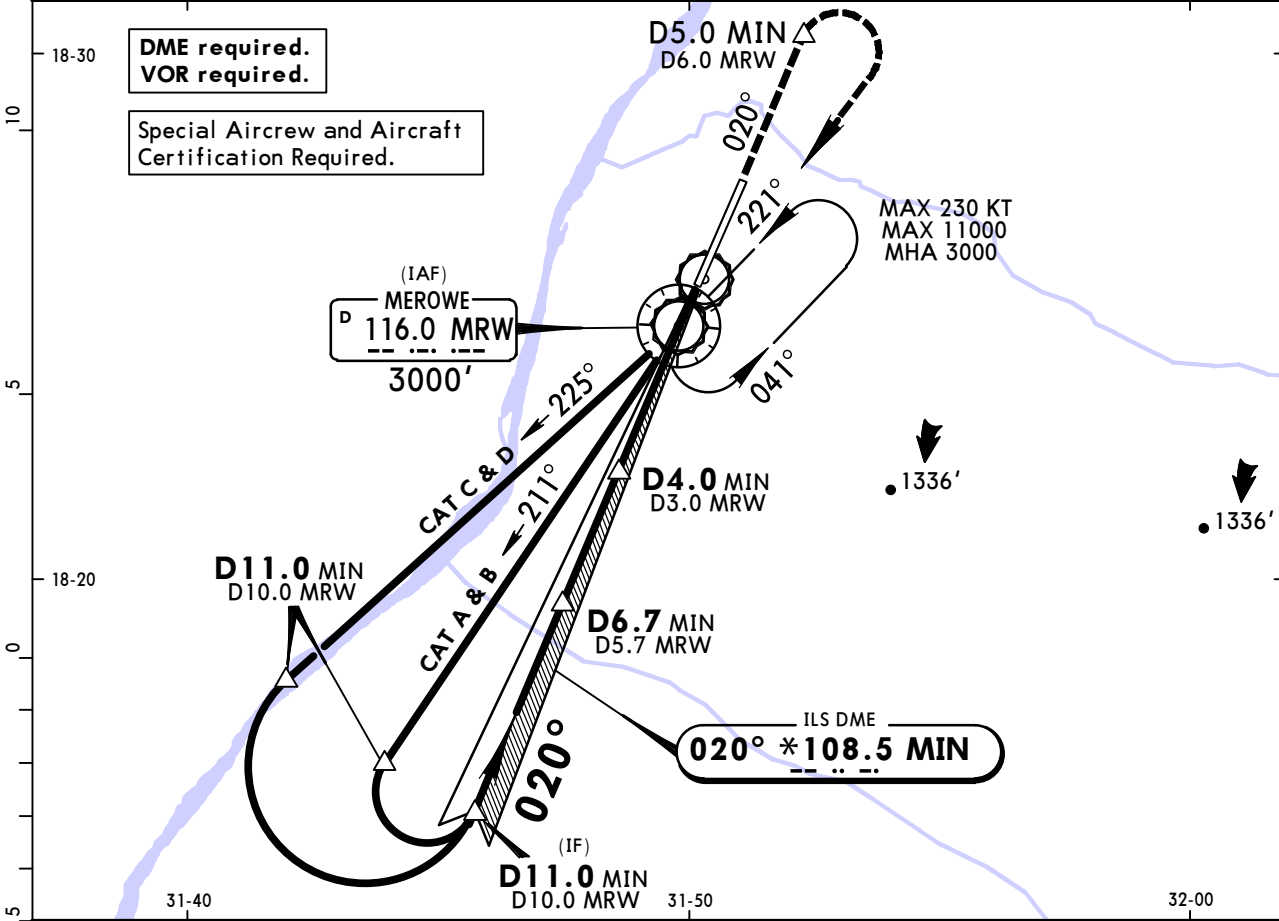
PANS OPS	STRAIGHT-IN LANDING RWY 02 ILS				LOC (GS out) with DME		CIRCLE-TO-LAND	
	DA(H) 1076' (200')				MDA(H) ABC: 1140' (264') D: 1150' (274')		Max Kts	MDA(H)
	FULL	TDZ or CL out	ALS out	ALS out				
A						100	1340' (441')	1900m
B	RVR 550m VIS 800m	RVR 720m VIS 800m	1200m		RVR 720m VIS 800m	135	1400' (501')	2800m
C					RVR 1500m VIS 1600m	180	1630' (731')	3700m
D				1200m		205	1760' (861')	4600m

HSMN/MWE
MEROWE

JEPPESEN
7 DEC 18 **(11-1A)**

MEROWE, SUDAN
CAT II ILS Rwy 02

*MEROWE Approach				*MEROWE Tower	
118.4				118.4	
LOC MIN *108.5	Final Apch Crs 020°	GS D4.0 MIN 2150' (1274')	CAT II ILS DA(H) 976' (100')	Apt Elev 899'	3000 MSA MRW VOR
MISSED APCH: Climb STRAIGHT AHEAD to D6.0 MRW, then turn RIGHT direct to VOR up to 3000'. At VOR join holding, or as directed. MAX 230 KT. If unable to reach 3000' over VOR, continue to climb in holding up to 3000'.				Rwy 876'	
Alt Set: hPa		Rwy Elev: 32 hPa	Trans level: By ATC		Trans alt: 7000'



Gnd speed-Kts	70	90	100	120	140	160	HIALS PAPI-L	230 KT MAX	D6.0 MRW
GS	3.00°	372	478	531	637	743			

STRAIGHT-IN LANDING RWY 02
CAT II ILS
ABCD

DA(H) **976' (100')**

RVR 350m

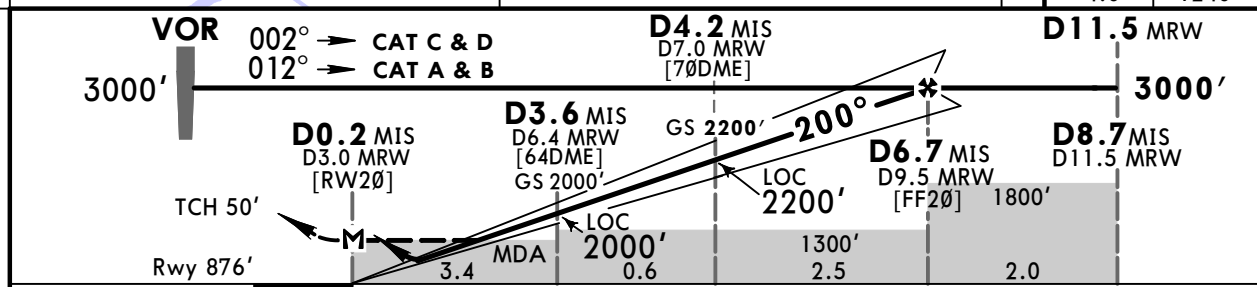
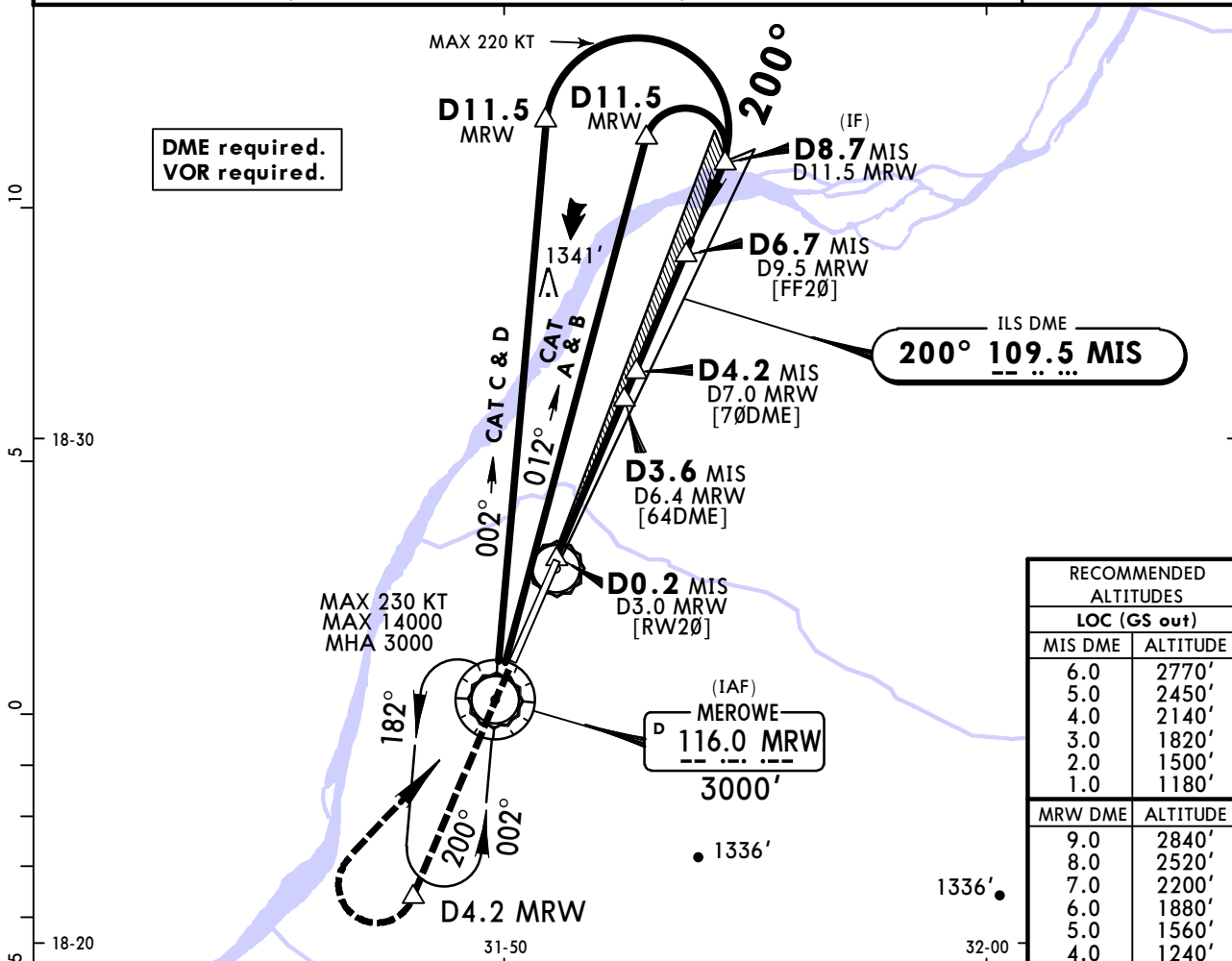
PANS OPS

HSMN/MWE MEROWE

JEPPESSEN
7 DEC 18 **(11-2)**

MEROWE, SUDAN ILS or LOC Rwy 20

*MEROWE Approach 118.4				*MEROWE Tower 118.4	
LOC MIS 109.5	Final Apch Crs 200°	GS D4.2 MIS 2200' (1324')	ILS DA(H) 1076' (200')	Apt Elev 899' Rwy 876'	
MISSED APCH: Climb STRAIGHT AHEAD to D4.2 MRW, then turn RIGHT direct to VOR up to 3000'. At VOR join holding, or as directed. MAX 230 KT. If unable to reach 3000' over VOR, continue to climb in holding up to 3000'.					
Alt Set: hPa		Rwy Elev: 32 hPa	Trans level: By ATC	Trans alt: 7000'	
					MSA MRW VOR



Gnd speed-Kts	70	90	100	120	140	160	HIALS PAPI-L	230 KT MAX	D4.2 MRW	
ILS GS or LOC Descent Angle	3.00°	372	478	531	637	743				849
MAP at D0.2 MIS/D3.0 MRW										

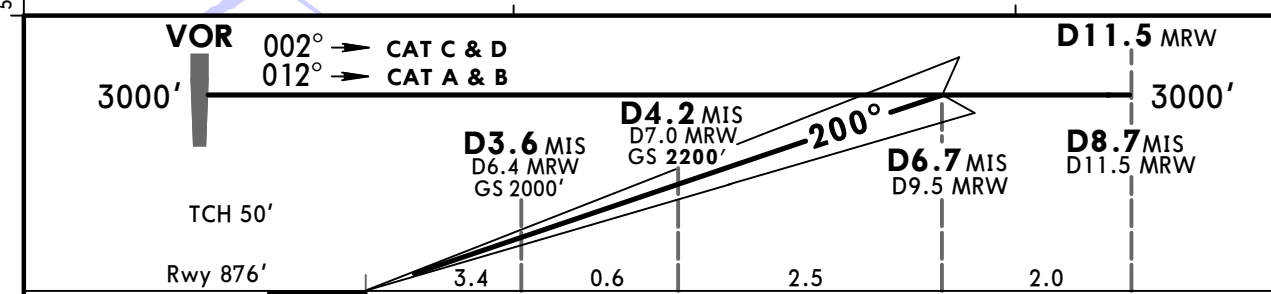
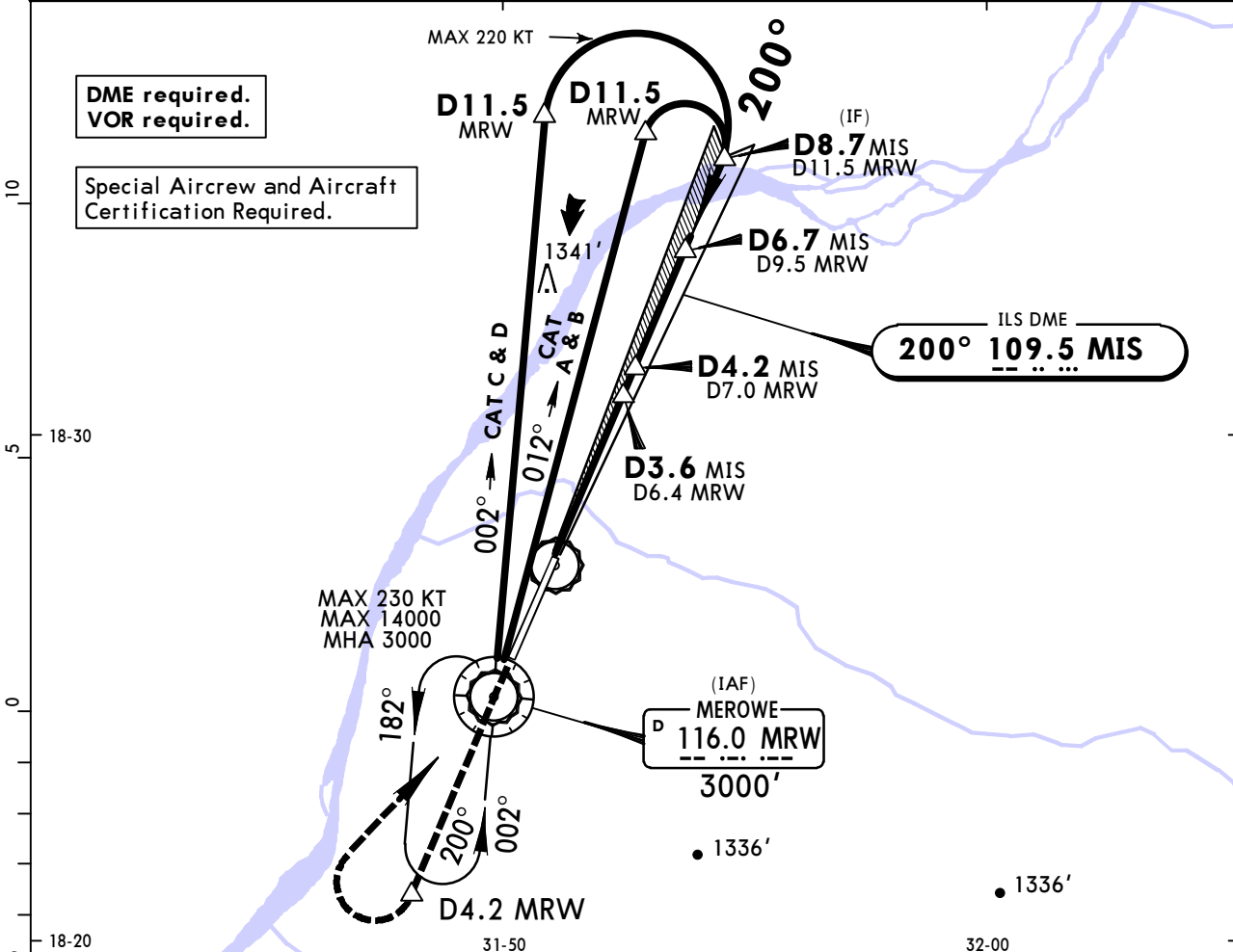
PANS OPS	STRAIGHT-IN LANDING RWY 20				CIRCLE-TO-LAND		
	ILS			LOC (GS out) with DME		Max Kts	MDA(H)
	FULL	TDZ or CL out	ALS out	DA(H) 1076' (200')	MDA(H) 1170' (294')		
A						100	1340' (441') 1900m
B	RVR 550m	RVR 720m	1200m	RVR 720m	RVR 1500m	135	1400' (501') 2800m
C	VIS 800m	VIS 800m		VIS 800m		VIS 1600m	180
D				1200m		205	1760' (861') 4600m

HSMN/MWE MEROWE

JEPPESEN
7 DEC 18 **(11-2A)**

MEROWE, SUDAN CAT II ILS Rwy 20

*MEROWE Approach 118.4			*MEROWE Tower 118.4		
LOC MIS 109.5	Final Apch Crs 200°	GS D4.2 MIS 2200' (1324')	CAT II ILS DA(H) 976' (100')	Apt Elev 899'	3000
MISSED APCH: Climb STRAIGHT AHEAD to D4.2 MRW, then turn RIGHT direct to VOR up to 3000'. At VOR join holding, or as directed. MAX 230 KT. If unable to reach 3000' over VOR, continue to climb in holding up to 3000'.					
Alt Set: hPa		Rwy Elev: 32 hPa	Trans level: By ATC		Trans alt: 7000'
					MSA MRW VOR



Gnd speed-Kts	70	90	100	120	140	160	HIALS PAPI-L	230 KT MAX	D4.2 MRW ↑
GS	3.00°	372	478	531	637	743			

STRAIGHT-IN LANDING RWY 20
CAT II ILS
 ABCD
 DA(H) **976' (100')**

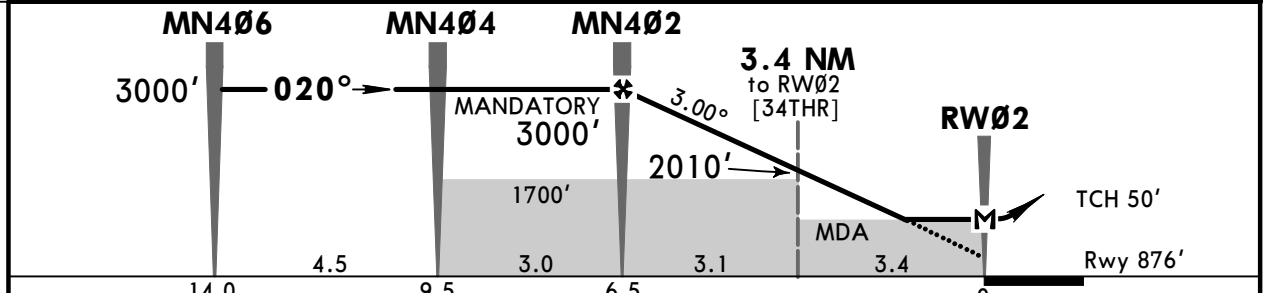
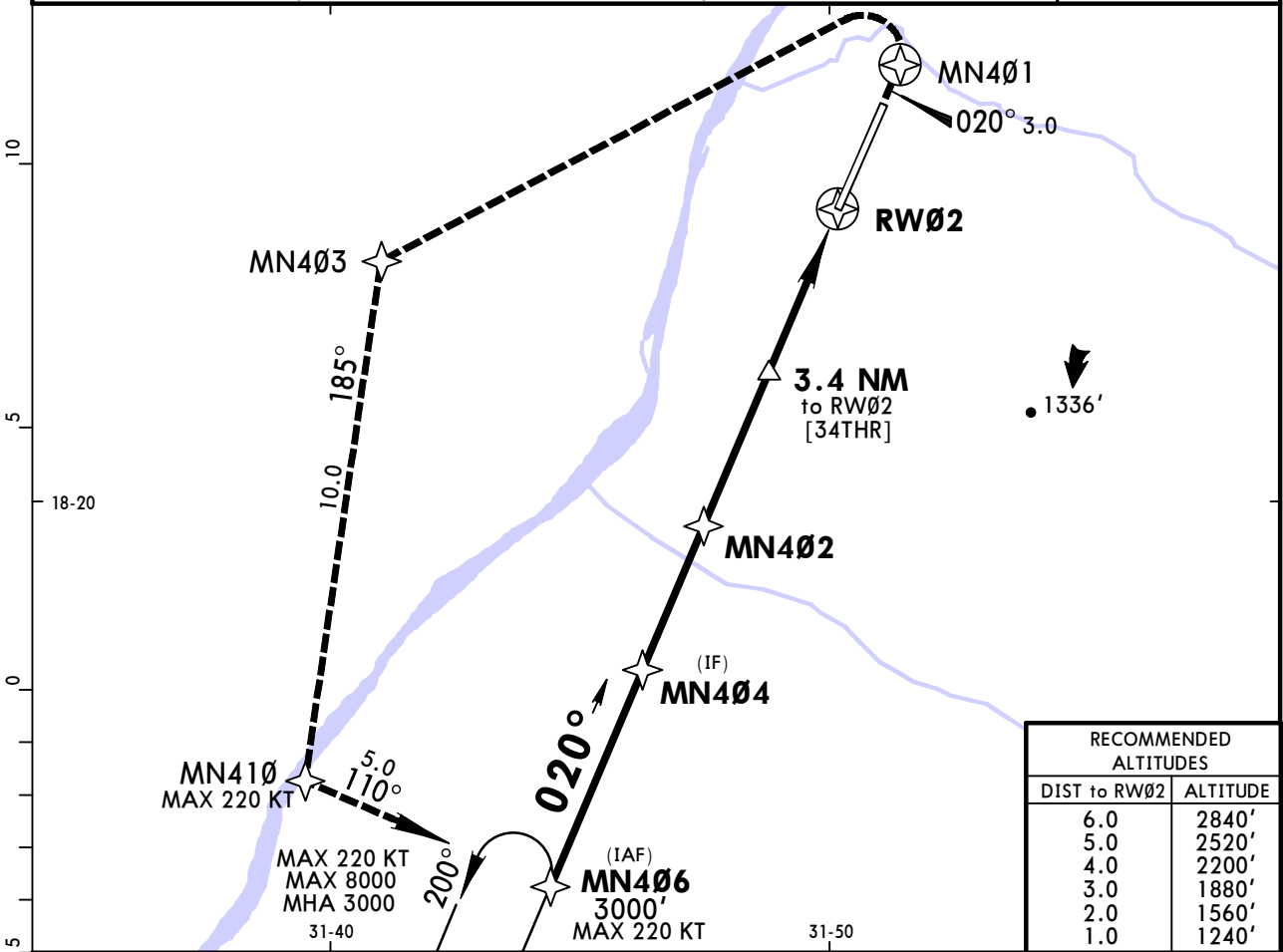
PANS OPS
 RVR 350m

HSMN/MWE
MEROWE

JEPPESEN
7 DEC 18 (12-1)

MEROWE, SUDAN
RNP Rwy 02

*MEROWE Approach				*MEROWE Tower	
118.4				118.4	
RNAV	Final Apch Crs 020°	Mandatory Alt MN402 3000' (2124')	LNAV MDA(H) 1170' (294')	Apt Elev 899'	3000 MSA ARP
MISSED APCH: Climb up to 3000' to MN401 on 020°, then turn LEFT direct to MN403, then to MN410, then to MN406. At MN406 join holding pattern, or as directed. MAX 220 KT.				Rwy 876'	
Alt Set: hPa		Rwy Elev: 32 hPa	Trans level: By ATC		Trans alt: 7000'



Gnd speed-Kts	70	90	100	120	140	160	HIALS PAPI-L	220 KT MAX	MN401 on 020°
Descent Angle	3.00°	372	478	531	637	743			
MAP at RW02									

STRAIGHT-IN LANDING RWY 02			CIRCLE-TO-LAND		
LNAV			LNAV		
MDA(H) 1170' (294')			MDA(H) 1170' (294')		
ALS out			ALS out		
A	RVR 720m VIS 800m	RVR 1500m VIS 1600m	Max Kts	MDA(H)	
B			100	1340' (441')	1900m
C			135	1400' (501')	2800m
D	1200m		180	1630' (731')	3700m
			205	1760' (861')	4600m

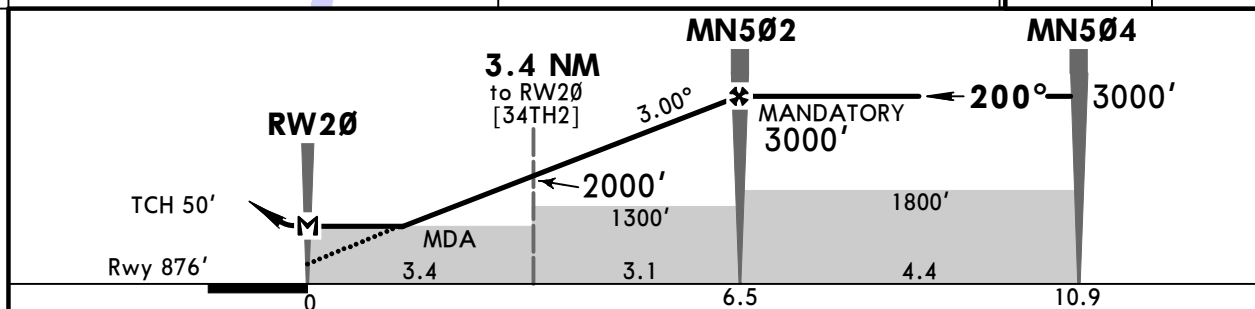
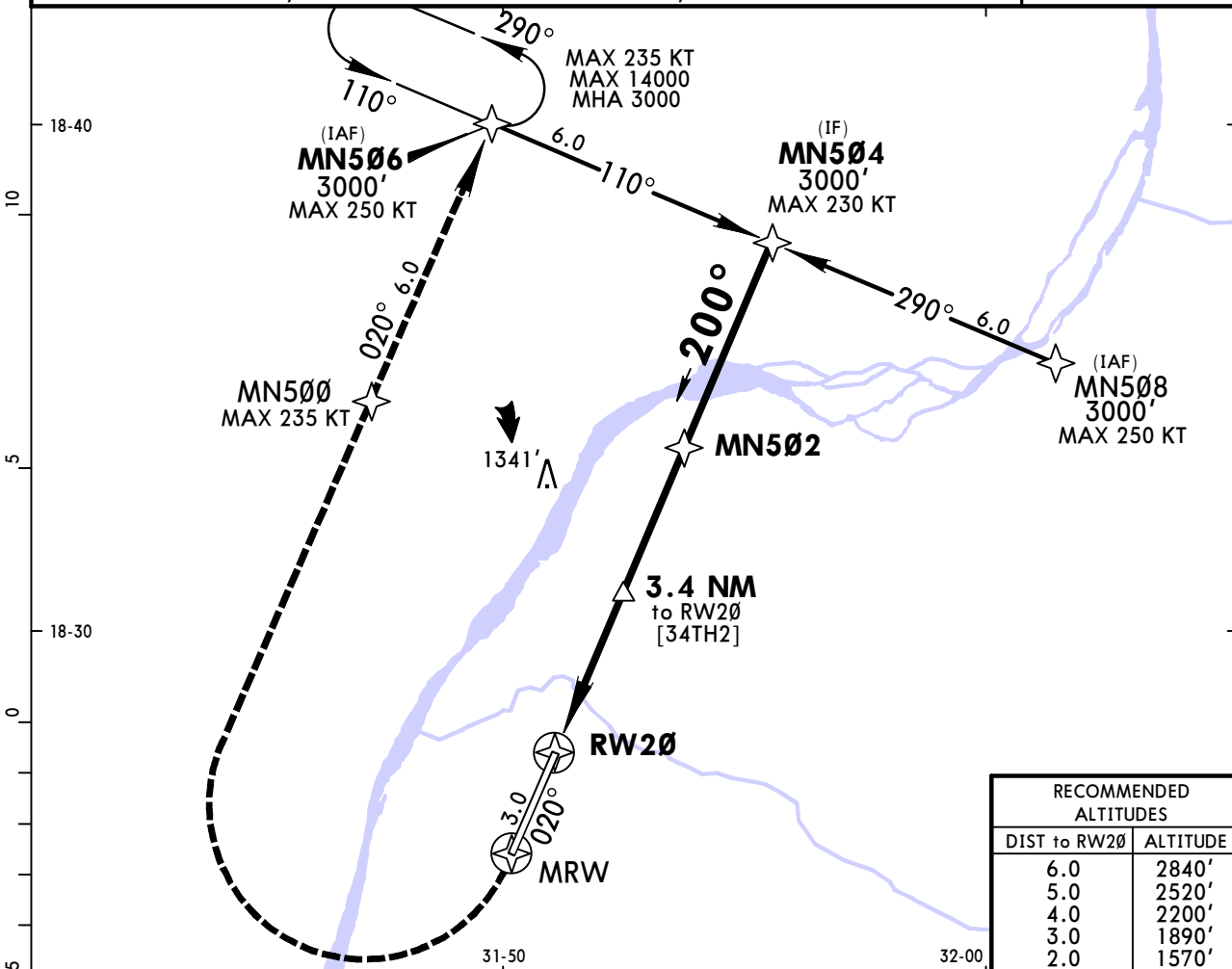
PANS OPS

HSMN/MWE MEROWE

JEPPESSEN
7 DEC 18 (12-2)

MEROWE, SUDAN RNP Rwy 20

*MEROWE Approach 118.4				*MEROWE Tower 118.4	
RNAV	Final Apch Crs 200°	Mandatory Alt MN502 3000' (2124')	LNAV MDA(H) 1170' (294')	Apt Elev 899'	3000
MISSED APCH: Climb up to 3000' to MRW on 200°, then turn RIGHT direct to MN500, then to MN506. At MN506 join holding pattern, or as directed. MAX 235 KT until MN500.					
Alt Set: hPa		Rwy Elev: 32 hPa	Trans level: By ATC	Trans alt: 7000'	MSA ARP



Gnd speed-Kts	70	90	100	120	140	160	HIALS PAPI-L	235 KT MAX	MRW on 200°
Descent Angle	3.00°	372	478	531	637	743			
MAP at RW20									

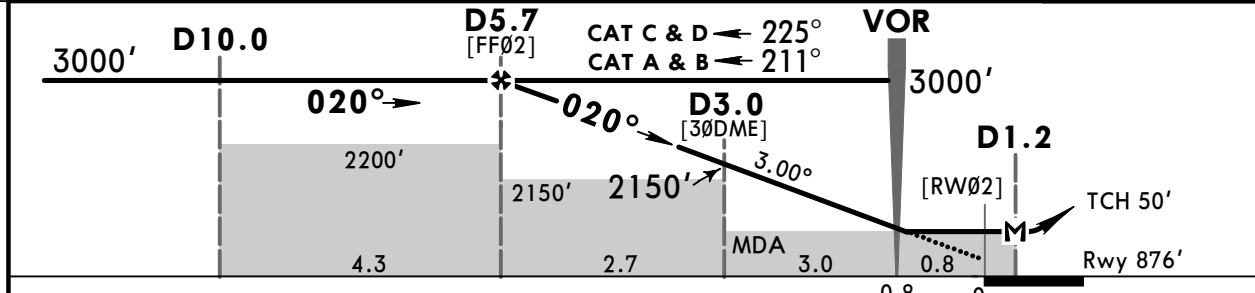
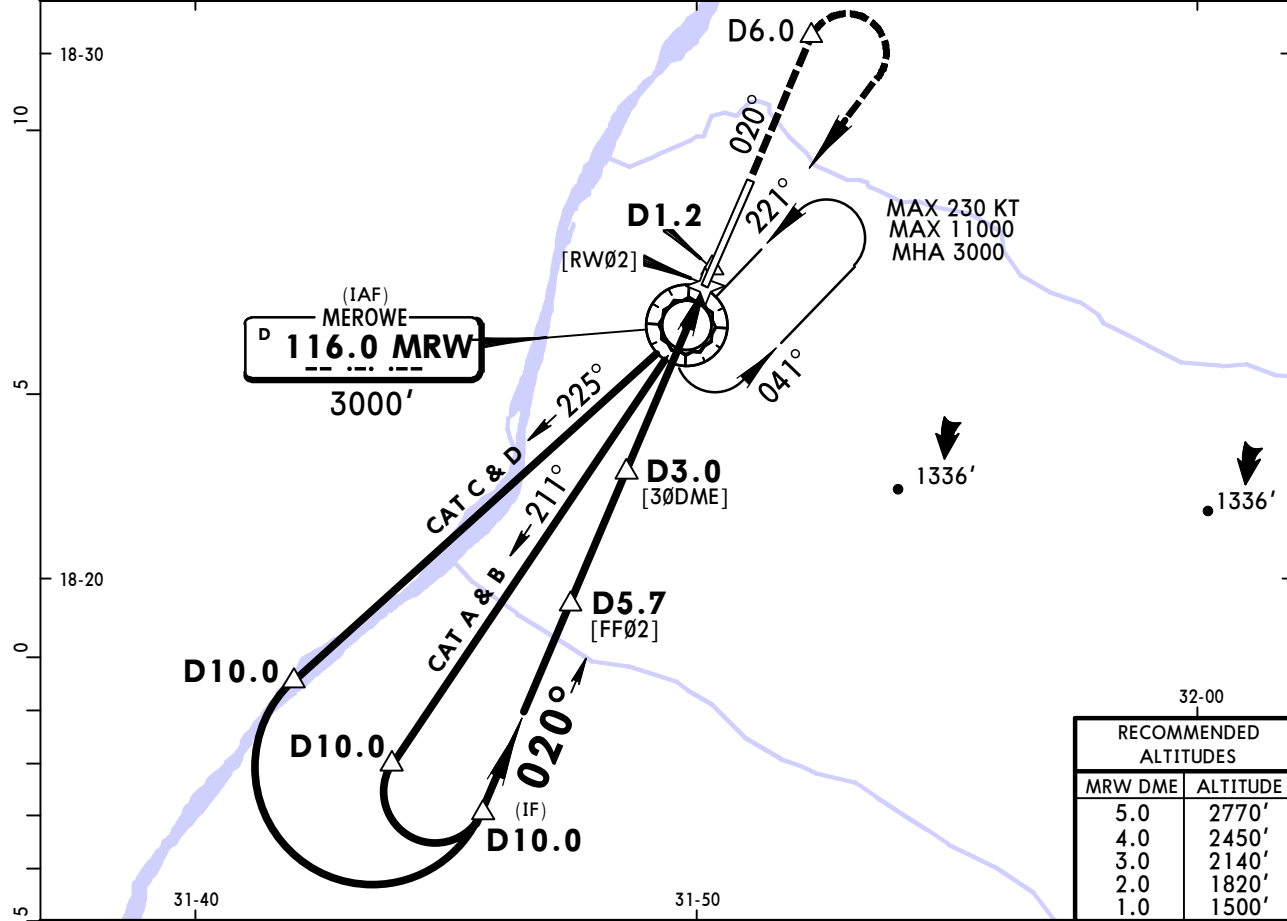
STRAIGHT-IN LANDING RWY 20			CIRCLE-TO-LAND		
LNAV			LNAV		
MDA(H) 1170' (294')			MDA(H)		
ALS out			ALS out		
A	RVR 720m VIS 800m	RVR 1500m VIS 1600m	100	1340' (441')	1900m
B			135	1400' (501')	2800m
C	1200m		180	1630' (731')	3700m
D			205	1760' (861')	4600m

HSMN/MWE MEROWE

JEPPESSEN
7 DEC 18 (13-1)

MEROWE, SUDAN VOR Z Rwy 02

*MEROWE Approach				*MEROWE Tower		
118.4				118.4		
VOR MRW 116.0	Final Apch Crs 020°	Procedure Alt D5.7 3000' (2124')	MDA(H) Refer to Minimums	Apt Elev 899'	3000	
MISSED APCH: Climb on 020° to D6.0, then turn RIGHT direct to VOR up to 3000'. At VOR join holding, or as directed. MAX 230 KT. If unable to reach 3000' over VOR, continue to climb in holding up to 3000'.						
Alt Set: hPa		Rwy Elev: 32 hPa	Trans level: By ATC	Trans alt: 7000'		MSA MRW VOR
DME required.						



Gnd speed-Kts	70	90	100	120	140	160	HIALS PAPI-L	230 KT MAX	D6.0 on 020°
Descent Angle	3.00°	372	478	531	637	743			
MAP at D1.2									

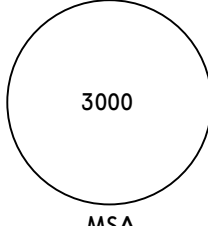
STRAIGHT-IN LANDING RWY 02					CIRCLE-TO-LAND				
MDA(H) ABC: 1170' (294')					Max Kts				
D: 1180' (304')					MDA(H)				
ALS out									
A	RVR 720m VIS 800m		RVR 1500m VIS 1600m		100	1340' (441')		1900m	
B	RVR 720m VIS 800m		RVR 1500m VIS 1600m		135	1400' (501')		2800m	
C	RVR 720m VIS 800m		RVR 1500m VIS 1600m		180	1630' (731')		3700m	
D	RVR 1500m VIS 1600m		RVR 1500m VIS 1600m		205	1760' (861')		4600m	

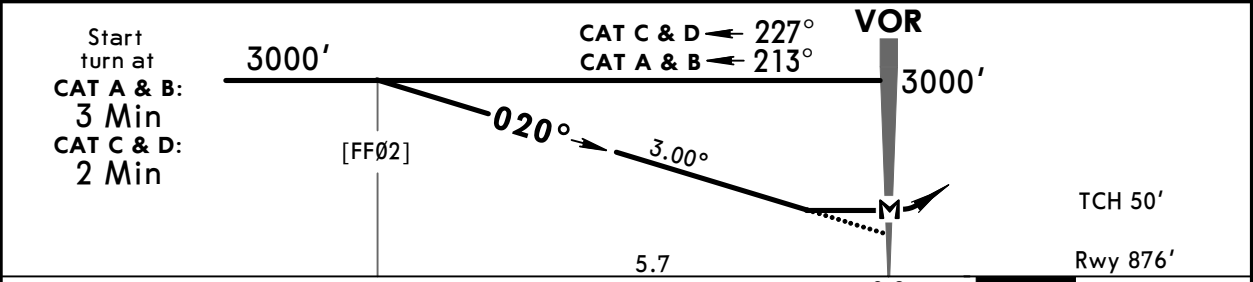
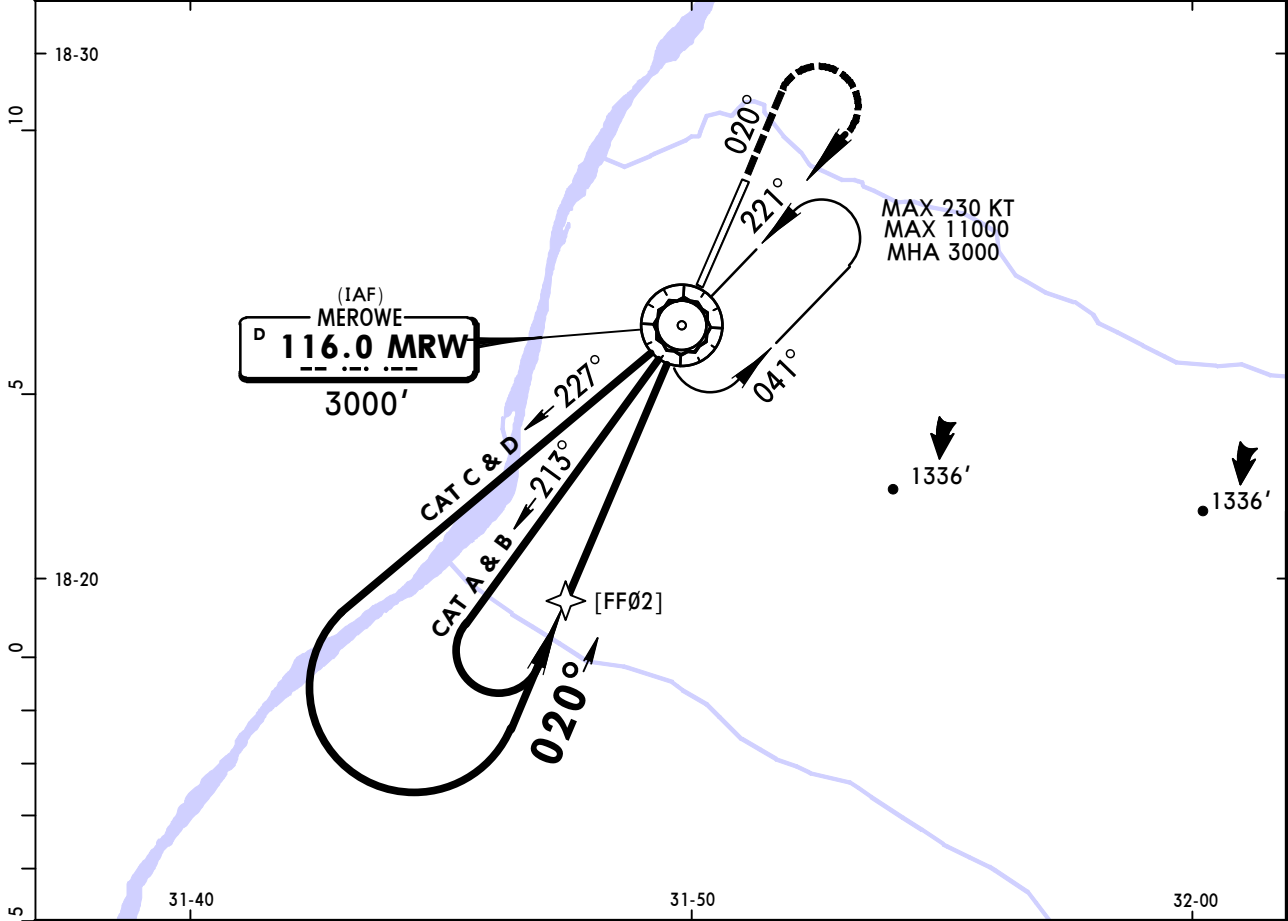
PANS OPS

HSMN/MWE
MEROWE

JEPPESEN
7 DEC 18 **(13-2)**

MEROWE, SUDAN
VOR Y Rwy 02

*MEROWE Approach				*MEROWE Tower			
118.4				118.4			
VOR MRW 116.0	Final Apch Crs 020°	Minimum Alt No FAF	MDA(H) 1400' (524')	Apt Elev 899'			
MISSED APCH: Climb on 020° to 2200', then turn RIGHT direct to VOR up to 3000'. At VOR join holding, or as directed. MAX 230 KT. If unable to reach 3000' over VOR, continue to climb in holding up to 3000'. Do not turn before MAP.							
Alt Set: hPa	Rwy Elev: 32 hPa	Trans level: By ATC	Trans alt: 7000'	MSA MRW VOR			



Gnd speed-Kts	70	90	100	120	140	160	HIALS PAPI-L	230 KT MAX	2200' on 020°
Descent Angle 3.00°	372	478	531	637	743	849			
MAP at VOR									

STRAIGHT-IN LANDING RWY 02				CIRCLE-TO-LAND			
MDA(H) 1400' (524')				Max Kts			
		ALS out		MDA(H)			
A	RVR 720m VIS 800m	RVR 1500m VIS 1600m	100	1400' (501')	1900m		
B			135	1400' (501')	2800m		
C	RVR 1500m VIS 1600m	2400m	180	1630' (731')	3700m		
D	2000m	2800m	205	1760' (861')	4600m		

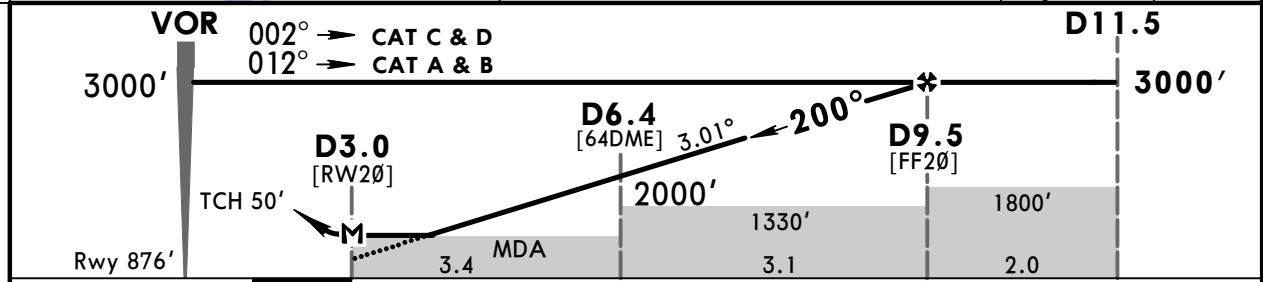
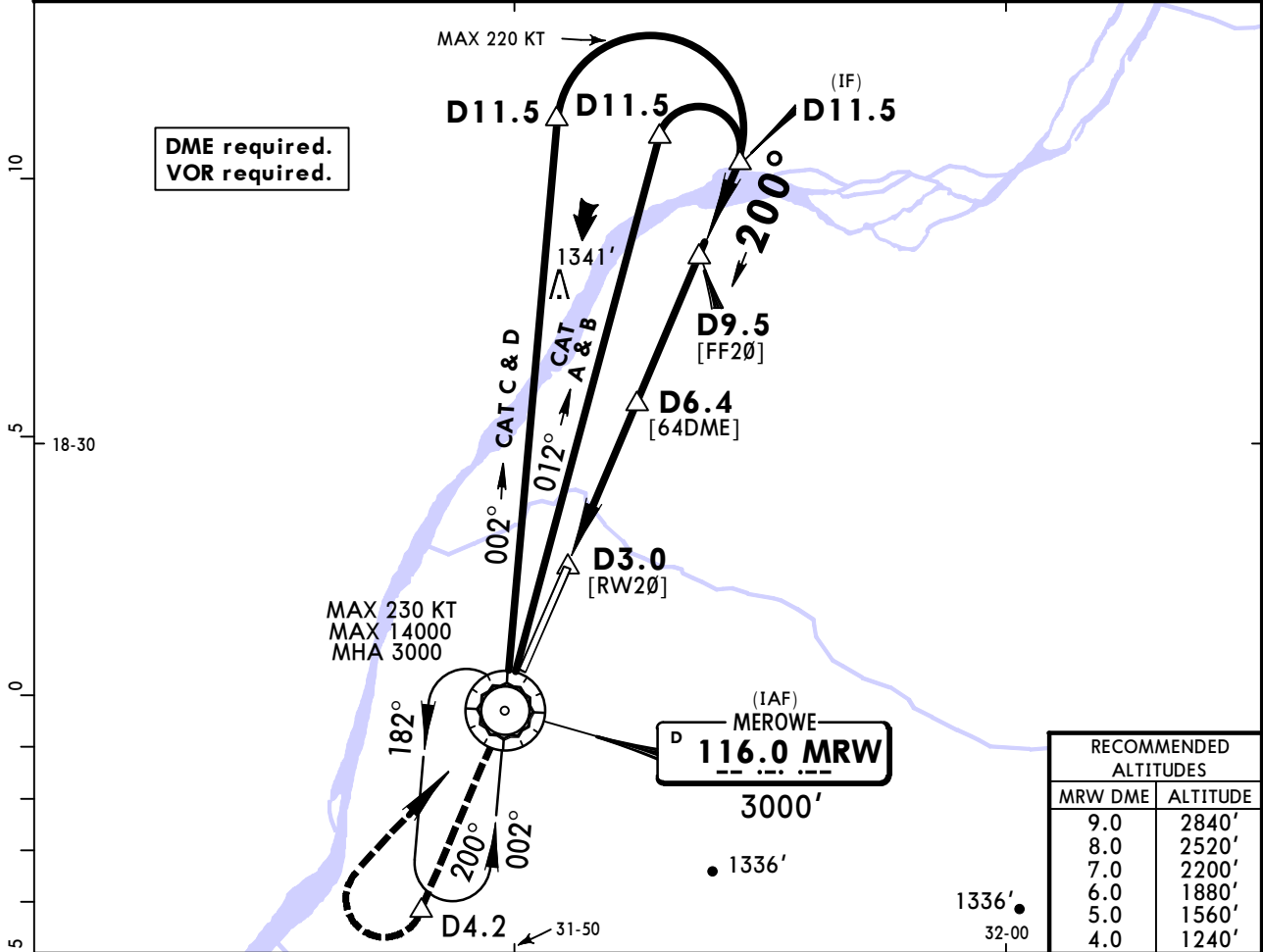
PANS OPS

HSMN/MWE
MEROWE

JEPPESEN
7 DEC 18 (13-3)

MEROWE, SUDAN
VOR Z Rwy 20

*MEROWE Approach 118.4			*MEROWE Tower 118.4		
VOR MRW 116.0	Final Apch Crs 200°	Procedure Alt D9.5 3000' (2124')	MDA(H) 1170' (294')	Apt Elev 899'	3000 MSA MRW VOR
MISSED APCH: Climb on 200° to VOR, then follow R-200. At D4.2 turn RIGHT direct to VOR up to 3000'. At VOR join holding pattern, or as directed. MAX 230 KT. If unable to reach 3000' over VOR, continue to climb in holding up to 3000'. Alt Set: hPa Rwy Elev: 32 hPa Trans level: By ATC Trans alt: 7000'					



Gnd speed-Kts	70	90	100	120	140	160	HIALS PAPI-L	230 KT MAX	MRW 116.0 on 200°
Descent Angle	3.01°	373	479	532	639	745			
MAP at D3.0									

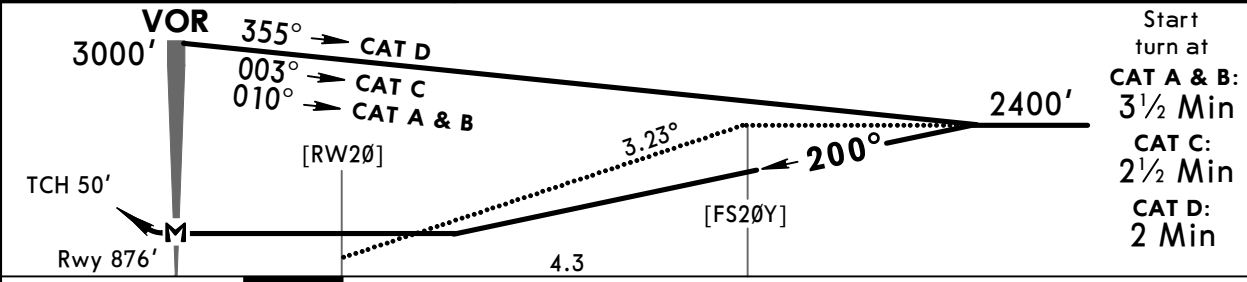
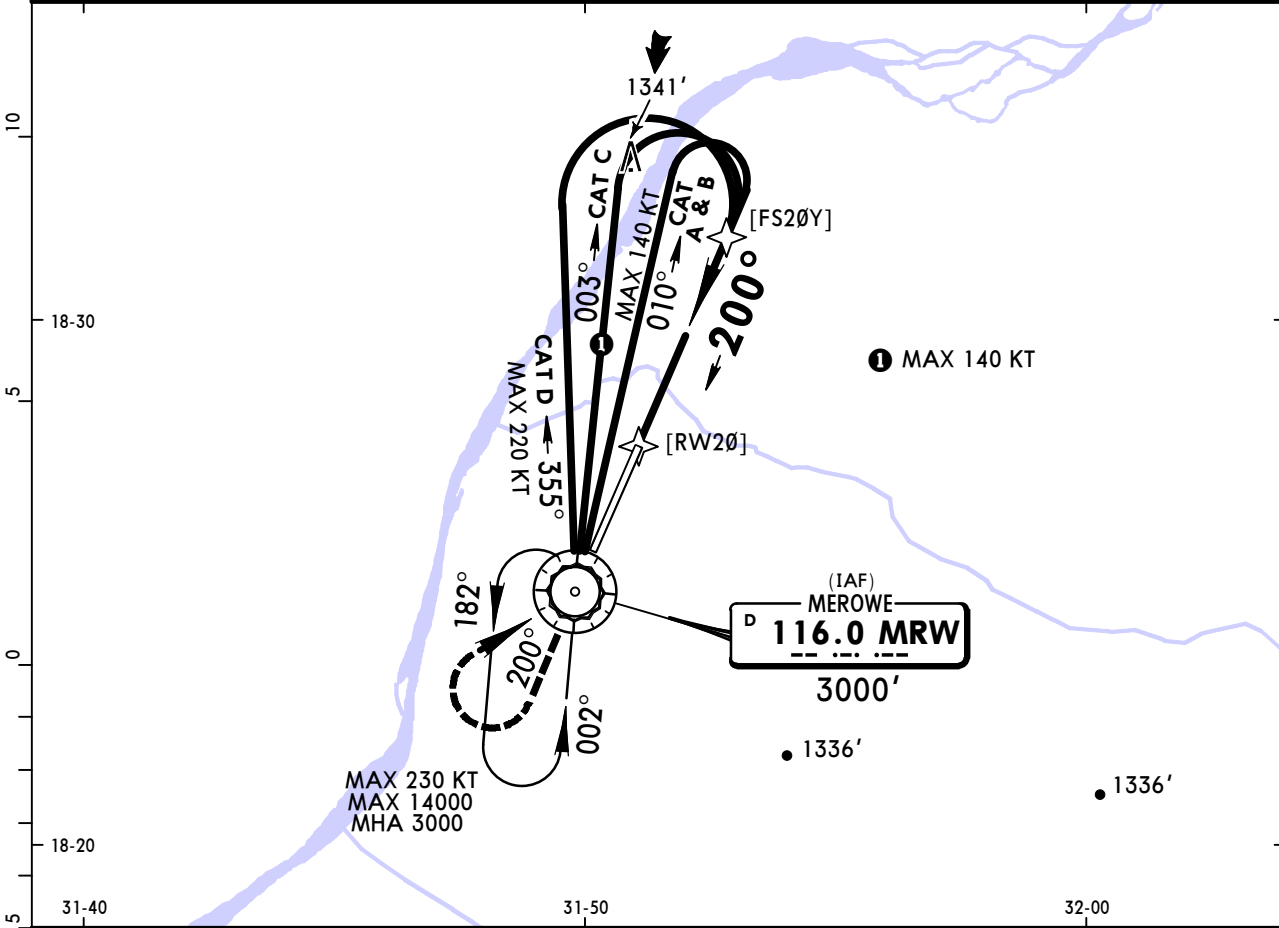
STRAIGHT-IN LANDING RWY 20		CIRCLE-TO-LAND	
MDA(H) 1170' (294')		MDA(H)	
ALS out		Max Kts	
A		100	1340' (441') 1900m
B	RVR 720m VIS 800m	135	1400' (501') 2800m
C		180	1630' (731') 3700m
D	RVR 1500m VIS 1600m	205	1760' (861') 4600m

HSMN/MWE
MEROWE

JEPPESEN
7 DEC 18 **(13-4)**

MEROWE, SUDAN
VOR Y Rwy 20

*MEROWE Approach				*MEROWE Tower					
118.4				118.4					
VOR MRW 116.0	Final Apch Crs 200°	Minimum Alt No FAF	MDA(H) 1550' (674')	Apt Elev 899'	<div style="border: 1px solid black; border-radius: 50%; width: 100px; height: 100px; margin: 0 auto; display: flex; align-items: center; justify-content: center;"> 3000 </div> <p>MSA MRW VOR</p>				
<p>MISSED APCH: Climb on R-200 to 2000', then turn RIGHT direct to VOR up to 3000'. At VOR join holding pattern, or as directed. MAX 230 KT. If unable to reach 3000' over VOR, continue to climb in holding up to 3000'. Do not turn before MAP.</p>									
Alt Set: hPa				Rwy Elev: 32 hPa			Trans level: By ATC		Trans alt: 7000'



Gnd speed-Kts	70	90	100	120	140	160	HIALS PAPI-L	230 KT MAX	2000' ↑
Descent Angle	3.23°	400	514	571	686	800			
MAP at VOR									

STRAIGHT-IN LANDING RWY 20					CIRCLE-TO-LAND							
MDA(H) 1550' (674')												
					Max Kts							
					MDA(H)							
A	RVR 720m	VIS 800m			ALS out	RVR 1500m	VIS 1600m			100	1550' (651')	1900m
B	2400m		3200m			135	1550' (651')	3700m			2800m	
C	2800m		3600m			180	1630' (731')	4600m			3700m	
D						205	1760' (861')				4600m	

PANS OPS

Chart changes since cycle 15-2023

ADD = added chart, REV = revised chart, DEL = deleted chart.

ACT	PROCEDURE IDENT	INDEX	REV DATE	EFF DATE
MEROWE, (MEROWE - HSMN)				

TERMINAL CHART CHANGE NOTICES

Chart Change Notices for Airport HSMN

Type: Terminal

Effectivity: Temporary

Begin Date: 20190912

End Date: Until Further Notice

PAPI-L rwy 02/20 change to APAPI-L.